

# Central Electrical Unit – Fire Engine



- Integration – high component mix, densely packed
- Small form factor – front and back side population
- Minimum stress – power items are added at room temperature after soldering of SMD / THT components
- Robust and reliable – high shock, vibration, humidity and corrosion resistance



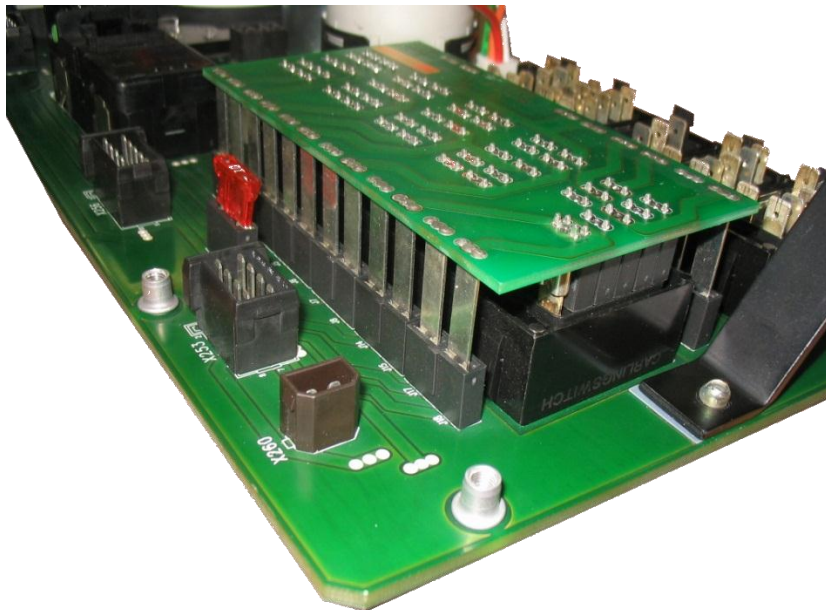
# Instrument & Switch Panel

Front



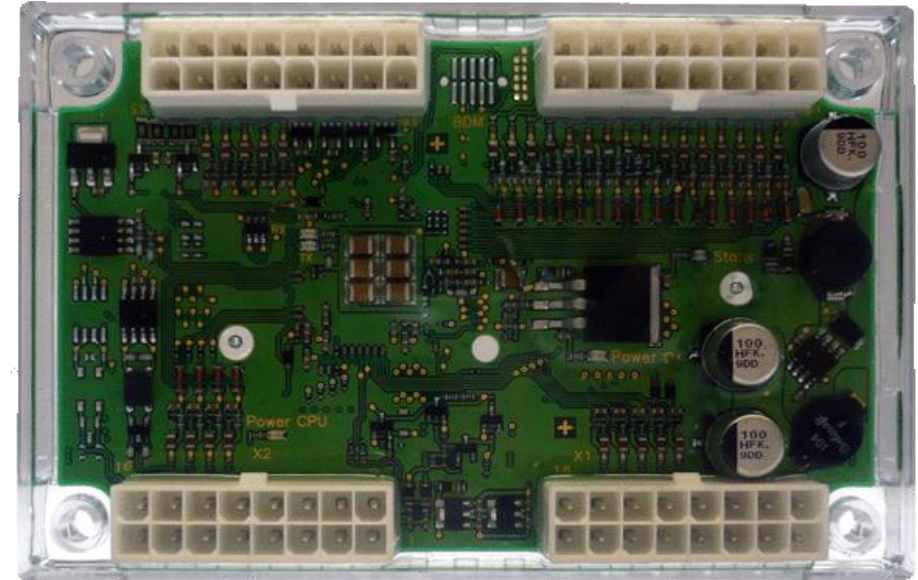
- ✚ Plug & play – Fast, easy assembly
- ✚ Clean & compact – No messy wiring
- ✚ High integration / high mix solution
- ✚ Robust – Shock & vibration resistant

Back



# ICCS CAN Controller 64P

- SAEJ1939 and CANopen compatible
- Freescale HCS12X 16 bits processor
- Operating Voltage 10 - 30V
- Analog inputs 0 - 10V / 0 - 20mA
- Digital inputs
- Digital outputs
- Digital inputs with interrupt
- Separated power supply / HS module
- Short circuit and overload protected
- Activity LED for  $\mu$ P and CAN buses
- “Sealed system” (not sealed connectors)





# Wireless Can ZigBee

more than you ex

