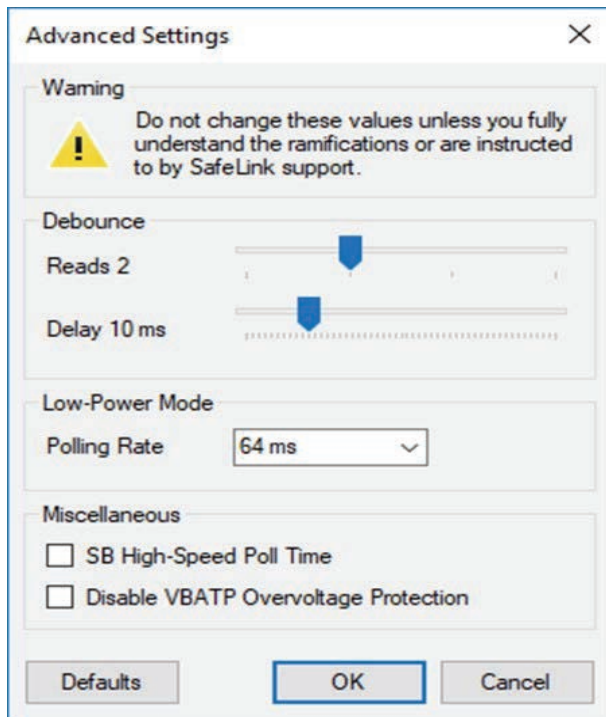


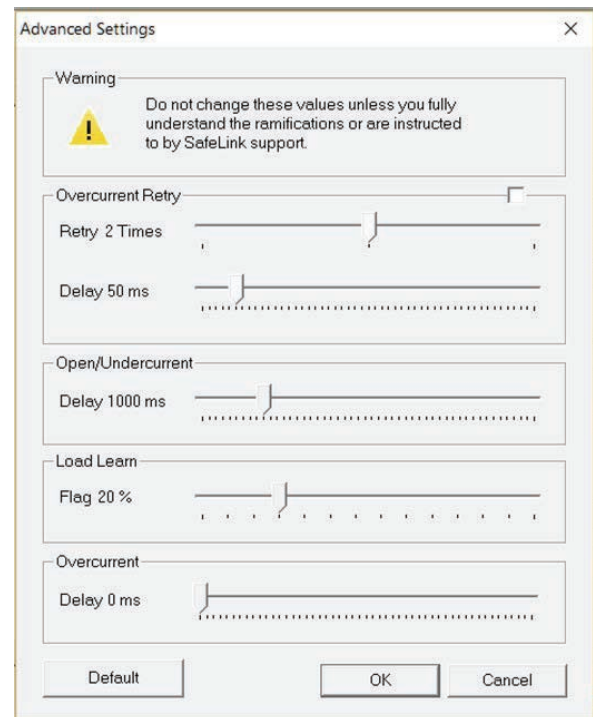


## Specifications

Node Data		Inputs/Outputs	
<b>Operating Voltage</b>	8VDC to 32VDC. Reverse polarity protection on power	<b>8 Digital Inputs</b>	6 Bi-Directional and 2 Ground only.
<b>Operating Temperature</b>	-40F to 185F (-40C to +185C)	<b>2 Analog Inputs</b>	4-20 mA, 0-5VDC, 0-VBAT, resistive or use as a digital input
<b>CAN Network</b>	125, 250 or 500KBS, peer to peer	<b>16 Digital Outputs</b>	14-10amp and 2 low side at 4amp
<b>Sealed Enclosure</b>	IP67, Deutsch Connectors	<b>2 CAN Ports</b>	1 SI-CAN and 1 configurable port
<b>Dimensions</b>	6" x 5" x 2"	<b>1 Micro USB OTG</b>	For connecting to node or flashing
<b>Weight</b>	1.3 lbs (.59 kg)	<b>Memory</b>	1MB Flash, 320KB SRAM,



Inputs



Outputs

## Advanced I/O