

WHELEN[®]

ENGINEERING COMPANY INC.

Route 145, Winthrop Road,
Chester, Connecticut 06412

Phone: (860) 526-9504

Fax: (860) 526-4078

Internet: www.whelen.com

Sales e-mail: autosale@whelen.com

Canadian Sales e-mail: autocan@whelen.com

Customer Service e-mail: custserv@whelen.com

Installation Guide: 900 Series Lighthouse Halogen, Brake-Tail-Turn & Strobe

Safety First

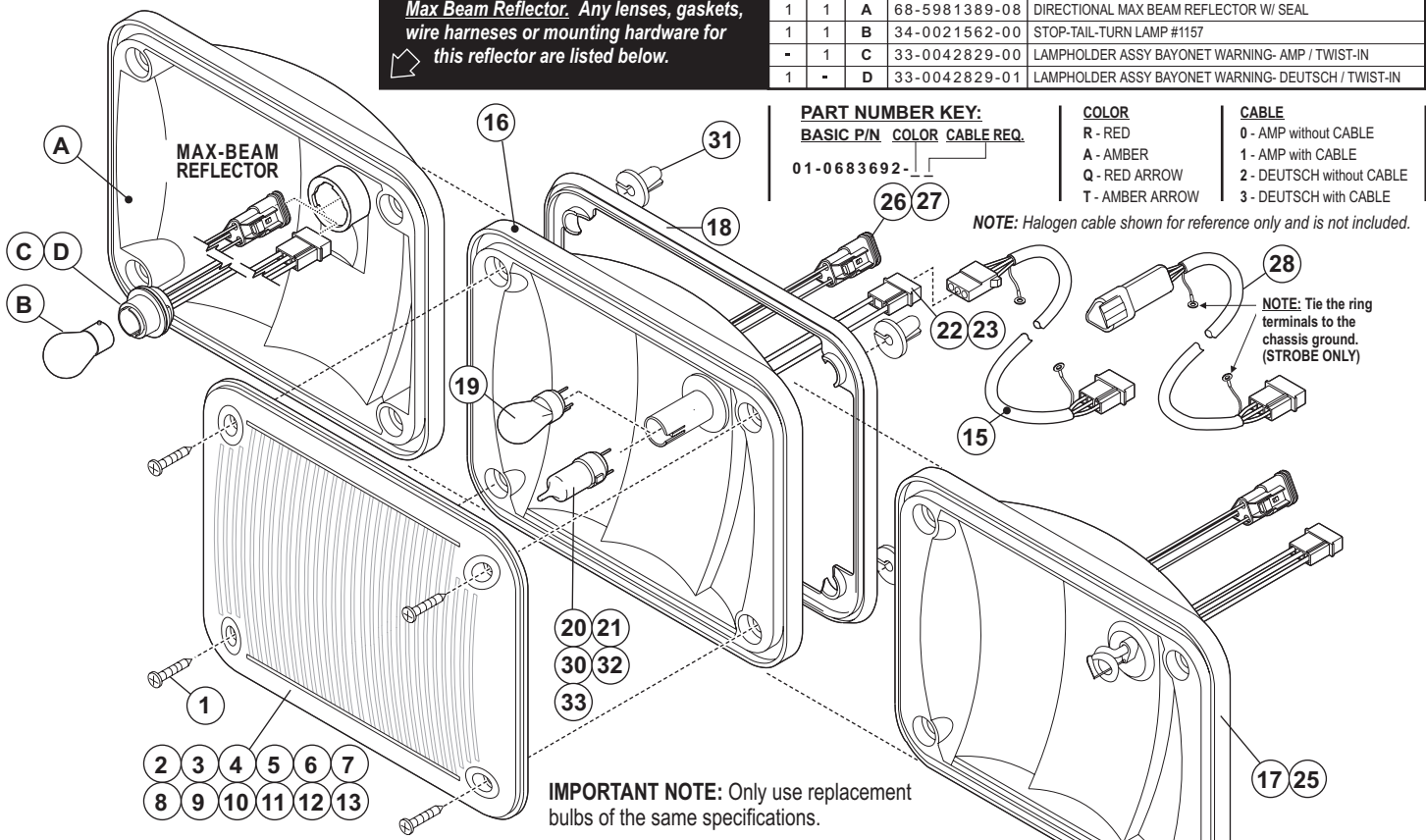
This document provides all the necessary information to allow your Whelen product to be properly and safely installed. Before beginning the installation and/or operation of your new product, the installation technician and operator must read this manual completely. Important information is contained herein that could prevent serious injury or damage.

- **Proper installation of this product requires the installer to have a good understanding of automotive electronics, systems and procedures.**
- **If mounting this product requires drilling holes, the installer MUST be sure that no vehicle components or other vital parts could be damaged by the drilling process. Check both sides of the mounting surface before drilling begins. Also de-burr any holes and remove any metal shards or remnants. Install grommets into all wire passage holes.**
- **If this manual states that this product may be mounted with tape or Velcro™, clean the mounting surface with a 50/50 mix of isopropyl alcohol and water and dry thoroughly.**
- **Do not install this product or route any wires in the deployment area of your air bag. Equipment mounted or located in the air bag deployment area will damage or reduce the effectiveness of the air bag, or become a projectile that could cause serious personal injury or death. Refer to your vehicle owners manual for the air bag deployment area. The User/Installer assumes full responsibility to determine proper mounting location, based on providing ultimate safety to all passengers inside the vehicle.**
- **For this product to operate at optimum efficiency, a good electrical connection to chassis ground must be made. The recommended procedure requires the product ground wire to be connected directly to the NEGATIVE (-) battery post.**
- **If this product uses a remote device to activate or control this product, make sure that this control is located in an area that allows both the vehicle and the control to be operated safely in any driving condition.**
- **Do not attempt to activate or control this device in a hazardous driving situation.**
- **This product contains either strobe light(s), halogen light(s), high-intensity LEDs or a combination of these lights. Do not stare directly into these lights. Momentary blindness and/or eye damage could result.**
- **Use only soap and water to clean the outer lens. Use of other chemicals could result in premature lens cracking (crazing) and discoloration. Lenses in this condition have significantly reduced effectiveness and should be replaced immediately. Inspect and operate this product regularly to confirm its proper operation and mounting condition. Do not use a pressure washer to clean this product.**
- **It is recommended that these instructions be stored in a safe place and referred to when performing maintenance and/or reinstallation of this product.**
- **FAILURE TO FOLLOW THESE SAFETY PRECAUTIONS AND INSTRUCTIONS COULD RESULT IN DAMAGE TO THE PRODUCT OR VEHICLE AND/OR SERIOUS INJURY TO YOU AND YOUR PASSENGERS!**

For warranty information regarding this product, visit www.whelen.com/warranty

This list includes 900 Series Replacement Parts Exclusive to Lighthead using the Max Beam Reflector. Any lenses, gaskets, wire harnesses or mounting hardware for this reflector are listed below.

QTY	QTY	ITEM	PART NUMBER	DISCRPTION
-	*	-	01-0683692-()	900 SERIES FINAL ASSY. / AMP
*	-	-	01-0683692-()	900 SERIES FINAL ASSY. / DEUTSCH
1	1	A	68-5981389-08	DIRECTIONAL MAX BEAM REFLECTOR W/ SEAL
1	1	B	34-0021562-00	STOP-TAIL-TURN LAMP #1157
-	1	C	33-0042829-00	LAMPHOLDER ASSY BAYONET WARNING- AMP / TWIST-IN
1	-	D	33-0042829-01	LAMPHOLDER ASSY BAYONET WARNING- DEUTSCH / TWIST-IN



IMPORTANT NOTE: Only use replacement bulbs of the same specifications.

QTY	QTY	QTY	QTY	QTY	QTY	QTY	QTY	ITEM	PART NUMBER	DESCRIPTION
							*		01-06836941 ___	900 SERIES / WARNING LIGHT
							*		01-06836942 ___	900 SERIES / SCENE / 12V
							*		01-06836943 ___	900 SERIES / BRAKE-TAIL-TURN
			*						01-06836944 ___	900 SERIES / STROBE
		*							01-06836945C	900 SERIES / BACK-UP
	*								01-06836946 ___	900 SERIES / SCENE / 24V
*									01-0683694_Z	900 SERIES / GRADIENT SCENE / 12-24V
4	4	4	4	4	4	4	1	15-0814116-240	#8 X 1 1/2" PHILLIPS PAN HEAD SMS	
-	-	-	A/R	-	-	A/R	2	68-1183542-10	LENS / AMBER	
-	-	-	A/R	-	-	A/R	3	68-1183542-20	LENS / BLUE	
-	-	1	A/R	-	-	A/R	4	68-1183542-30	LENS / CLEAR	
-	-	-	A/R	-	-	A/R	5	68-1183542-40	LENS / GREEN	
-	-	-	A/R	A/R	-	A/R	6	68-1183542-50	LENS / RED	
-	-	-	A/R	-	-	A/R	7	68-1183542E50	LENS / KKKE-SPEC / RED	
-	-	-	A/R	-	-	A/R	8	02-0363407-**	LENS ASSY / 900 SERIES HALOGEN SPLIT	
-	A/R	-	-	-	-	A/R	9	02-0361457-26	LENS ASSEMBLY / SCENELIGHT 26	
-	A/R	-	-	-	-	A/R	10	02-0361457-13	LENS ASSEMBLY / SCENELIGHT 13	
-	-	-	-	-	-	A/R	11	68-1181745L1P	ARROW LENS / AMBER with PAINT / LEFT HAND	
-	-	-	-	-	-	A/R	12	68-1181745L5P	ARROW LENS / RED with PAINT / LEFT HAND	
1	-	-	-	-	-	-	13	68-1983892-30	LENS / GRADIENT SCENE / CLEAR	
A/R	A/R	A/R	A/R	A/R	A/R	A/R	15	01-0440624-15	CABLE ASSEMBLY	
1	1	1	-	1	1	1	16	68-5983540-02	REFLECTOR / 900 HALOGEN / METAL / with SEAL	
-	-	-	A/R	-	-	-	17	02-0383678-00	REFLECTOR / 900 STROBE / METAL / with SEAL	
1	1	1	1	1	1	1	18	38-0481690-00	GASKET	
-	-	-	-	-	-	-	19	34-0062389-00	DUAL FILAMENT LAMP / 27W-12W	
-	-	-	-	-	-	-	20	34-0041987-00	SNAP-IN LAMP / 12V-35H	
-	-	-	-	-	-	-	21	34-0041987-07	SNAP-IN LAMP / 12V-60W	
A/R	A/R	A/R	-	-	-	A/R	22	02-0283694-00C	SUB ASSY, 900 REFLECTOR 2 WIRE/3 POS AMP	
-	-	-	-	-	-	A/R	23	02-0283694-01C	SUB ASSY, 900 REFLECTOR 3 WIRE/3 POS AMP	
-	-	-	A/R	-	-	-	25	02-0383678-01	REFLECTOR / 900 STROBE / WATERPROOF	
-	-	-	-	-	-	-	26	02-0283694-03C	SUB ASSY, 900 REFLECTOR 3 WIRE/3 POS DEUTSCH	
A/R	A/R	A/R	-	-	-	A/R	27	02-0283694-02C	SUB ASSY, 900 REFLECTOR 2 WIRE/3 POS DEUTSCH	
A/R	A/R	A/R	A/R	A/R	A/R	A/R	28	01-0442199-15	CABLE ASSY. / DEUTSCH	
-	-	1	-	-	-	-	30	34-0041987-03	SNAP-IN LAMP / 12V-27H	
4	4	4	4	4	4	4	31	21-1708080603	GROMMET	
A/R	1	-	-	-	-	-	32	34-0041987-02	SNAP-IN LAMP / 28V-35W	
A/R	-	-	-	-	-	-	33	34-0041987-01	SNAP-IN LAMP / 12V-50H	

PART NUMBER KEY:

BASIC P/N	STYLE	COLOR	CABLE
01-0683694	1 - WARNING	R - RED	0 - AMP no CABLE
	2 - SCENE	B - BLUE	1 - AMP with CABLE
	3 - B / T / T	G - GREEN	2 - DEUTSCH no CABLE
	4 - STROBE	A - AMBER	3 - DEUTSCH with CABLE
	5 - BACK-UP	C - CLEAR	
	6 - SCENE / 24V	5 - KKKE RED	
		* - SPLIT	
		Y - 13° SCENE	
		X - 26° SCENE	
		Q - RED ARROW	
		Z - GRADIENT SCENE	

CABLE:

- 0 - AMP no CABLE
- 1 - AMP with CABLE
- 2 - DEUTSCH no CABLE
- 3 - DEUTSCH with CABLE

900 Series Lighthead / Replacement Parts

Mounting:

- Using the mounting diagram on the next page, mark off the mounting holes and the "cut-out" area.
- Using a .250 drill bit, drill the mounting holes then carefully cut and remove the area of the mounting surface as shown. Do not remove the mounting surface where the mounting holes are drilled.
- Insert supplied grommets into the mounting holes.
- Route the cable through the wiring hole to the power supply. (For strobe, be sure that both ring terminals are grounded to the vehicle chassis.) Plug the cable into the power supply and test the operation of the lighthead, then position the Lighthead components onto the mounting surface and secure them to the vehicle using the four #8 x 1 1/2" sheet metal screws. **NOTE: When mounting a "gradient" scenelight lens (Item 13), the word "TOP" imprinted on the lens must be located on top of the lens when mounted.**

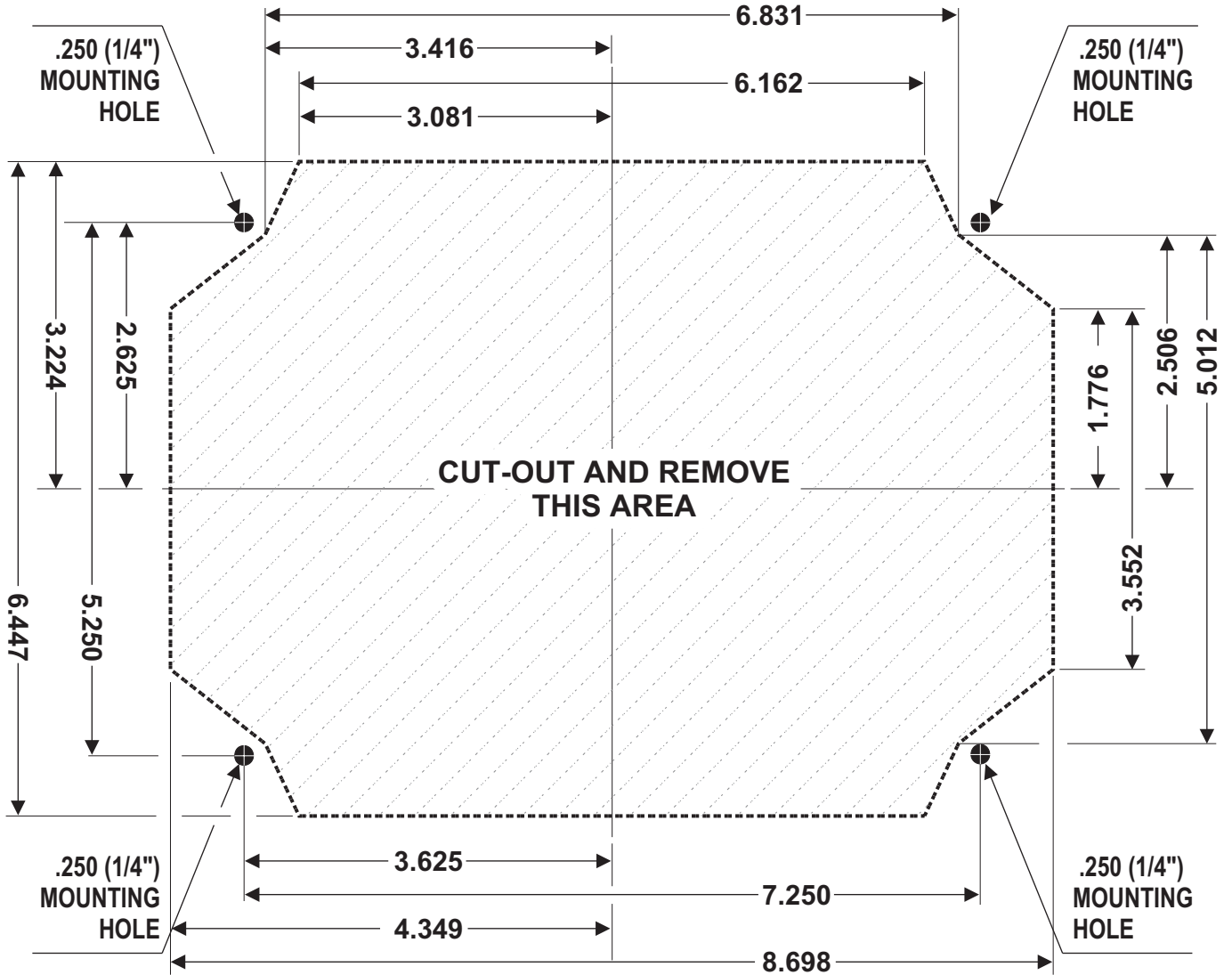
WARNING! The strobe light power supply is a high voltage device. Do not remove strobe tubes or dismantle strobe lighthead in system while in operation. Wait 10 minutes after turning off power before working or troubleshooting.

WARNING! All customer supplied wires that connect to the positive (+) terminal of the battery, must be sized to supply at least 125% of the maximum operating current, and fused "at the battery" to carry that load.

900 SERIES LIGHTHEAD MOUNTING DIAGRAM

NOTE: The dimensions shown in this illustration are shown to the third decimal place. Although the tools capable of cutting this opening are not usually this accurate, it is absolutely necessary to try and stay as close to these dimensions as possible.

IMPORTANT: This diagram is not to scale. Before drilling, confirm all dimensions.



FLANGE KIT / 900 SERIES

QTY	ITEM	PART NUMBER	DESCRIPTION
*		01-0462945-01	FLANGE KIT with SEAL
1	1	11-783130-002	FLANGE with SEAL
1	2	38-0481440-00	FLANGE GASKET

