

UPPER ZONE PUMPER PACKAGE 2

LED, FLASHING AND ROTATING HALOGEN LIGHTING

FORM# N0497-16

This package meets all upper zone requirements of NFPA 1901 specifications.

ZONE A UPPER

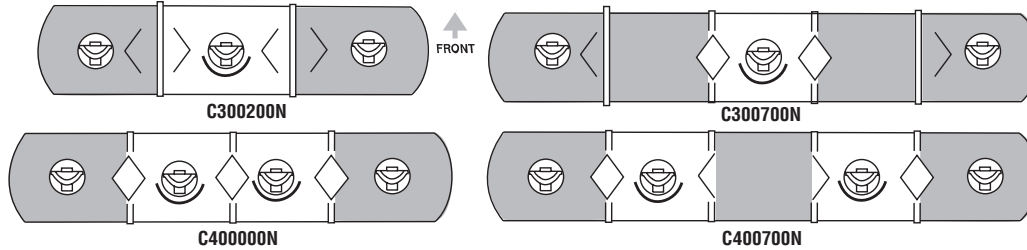
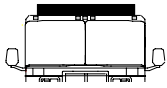
Choose 1 of the options below

Zone Photometric Requirement- 1,000,000 CSM

- Option 1 One C300200N Centurion™ 3 Rotator Lightbar, 52"
- Option 2 One C300700N Centurion 3 Rotator Lightbar, 72"
- Option 3 One C400000N Centurion 4 Rotator Lightbar, 60"
- Option 4 One C400700N Centurion 4 Rotator Lightbar, 72"

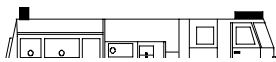
COLOR LEGEND

- Clear rotators or Lens
- Red Lens



ZONE B UPPER

Zone Photometric Requirement- 400,000 CSM



Zone B Upper Front is covered by the Rotator from the Centurion Lightbar from Zone A upper

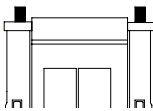
Zone B Upper Rear is covered by One of the Options chosen from Zone C upper

ZONE C UPPER

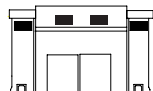
Choose 1 of the options below

Zone Photometric Requirement- 800,000 CSM

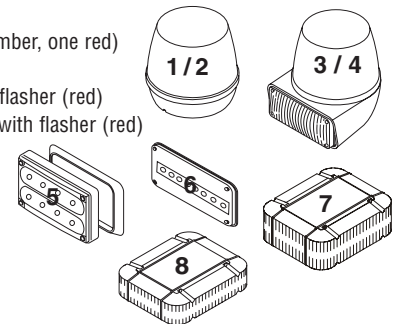
- Option 1 One RB6TAP and one RB6TRP RB6 Series Rotating Beacon (one amber, one red)
- Option 2 Two RB6TRP RB6 Series Rotating Beacons (red)
- Option 3 Two B6TLRR1P RBT Series Upper Rotator, Lower Level, LED with flasher (red)
- Option 4 Two B6TFRR1P RBT Series Upper Rotator, Lower Level, Halogen with flasher (red)
- Option 5 Four 40R020RR* 400 Series Linear8 Super-LED™ Lighthoods (red)
- Option 6 Four 70R040RR 700 Series Linear8 Super-LED™ Lighthoods (red)
- Option 7 Two MCFLED2R Micro Edge® Ultra Freedom Lighthoods (red)
- Option 8 Two MCSLED2R Micro Edge® LFL Liberty LED Lighthoods (red)



Option 1,2,3,4,7,8

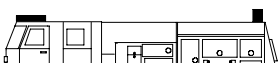


Option 5,6



ZONE D UPPER

Zone Photometric Requirement- 400,000 CSM



Zone D Upper Front is covered by the Rotator from the Centurion Lightbar from Zone A upper

Zone D Upper Rear is covered by One of the Options chosen from Zone C upper

*Requires optional flange purchased separately

Note: Underscored model numbers indicate need for remote LED ballast.

One Model AF6012 Halogen Flasher operating all flashing Halogen Lighthoods. (Flasher will run up to 12 total, 6 alternating 6).
 See Amp Draw Charts on pages 36 and 37 for overall amperage consumption.
 Some LED lighthoods have internal flasher module and do not need a flasher unless a specific flash sequence is needed.
Underscored LED lighthoods need a remote ballast to operate.



CERTIFICATE OF COMPLIANCE WITH NFPA 1901

To Meet Certification, Check Box for the Option Chosen in Each Appropriate Zone

Note: This system is tested and certified by Whelen Engineering Company, Inc. to meet all requirements for the NFPA 1901 Standards for Automotive Fire Apparatus (1999 Edition). See Chapter 11 titled: Low Voltage Electrical Systems & Warning Devices. This System is Certified only if all optical and electrical warning devices are installed and wired in accordance to the 1901 Standard and Specifications; and also in accordance to the device manufacturers mounting and wiring specifications.

_____ FIRE DEPARTMENT

_____ TRUCK NUMBER