

# UPPER ZONE PUMPER PACKAGE 1

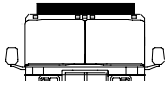
This package meets all upper zone requirements of NFPA 1901 specifications.

**LED, STROBE AND ROTATING HALOGEN LIGHTING**

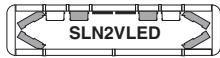
## ZONE A UPPER

Choose 1 of the options below

Zone Photometric Requirement- 1,000,000 CSM



- Option 1** One SLN2VLED NFPA Edge® LFL Liberty™ LED Lightbar, clear outer lenses, std. 54" only
- Option 2** One SLN2QLED NFPA Edge LFL Liberty LED Lightbar, clear outer lenses, std. 54" only
- Option 3** One FN55QLED NFPA Edge Ultra Freedom LED Lightbar, clear outer lenses, std. 55"
- Option 4** One FN60QLED NFPA Edge Ultra Freedom LED Lightbar, clear outer lenses, std. 60"
- Option 5** One FN72QLED NFPA Edge Ultra Freedom LED Lightbar, clear outer lenses, std. 72"
- Option 6** One FN55VLED NFPA Edge Ultra™ Freedom™ LED Lightbar, clear outer lenses, std. 55"
- Option 7** One FN60VLED NFPA Edge Ultra Freedom LED Lightbar, clear outer lenses, std. 60"
- Option 8** One FN72VLED NFPA Edge Ultra Freedom LED Lightbar, clear outer lenses, std. 72"
- Option 9** One 9M382NQ NFPA Edge 9M Strobe Lightbar, color outer lenses, std. 55"
- Option 10** One 9M380NQ NFPA Edge 9M Strobe Lightbar, color outer lenses, std. 60"
- Option 11** One 9M387NQ NFPA Edge 9M Strobe Lightbar, color outer lenses, std. 72"
- Option 12** One 9M382NV NFPA Edge 9M Strobe Lightbar, color outer lenses, std. 55"
- Option 13** One 9M380NV NFPA Edge 9M Strobe Lightbar, color outer lenses, std. 60"
- Option 14** One 9M387NV NFPA Edge 9M Strobe Lightbar, color outer lenses, std. 72"



**COLOR LEGEND**  
 □ Clear LEDs, Strobes or Lens  
 ■ Red LEDs or Lens  
 ■ Black Lens or Filler Panels

## ZONE B UPPER

Zone Photometric Requirement- 400,000 CSM

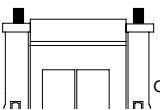


Zone B Upper Front is covered by the lights from the Rear or Side of the Lightbar from Zone A upper  
 Zone B Upper Rear is covered by One of the options chosen from Zone C Upper

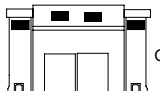
## ZONE C UPPER

Choose 1 of the options below

Zone Photometric Requirement- 800,000 CSM

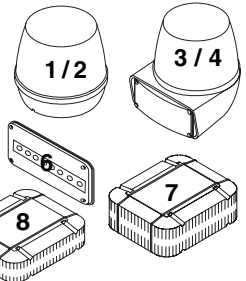


Option 1, 2, 3, 4, 7, 8



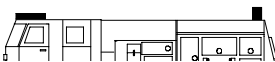
Option 5, 6

- Option 1** One RB6TAP and one RB6TRP RB6 Series Rotating Beacon (one amber, one red)
- Option 2** Two RB6TRP RB6 Series Rotating Beacons (red)
- Option 3** Two B6TLRR1P RBT Series Upper Rotator, Lower Level, LED with flasher (red)
- Option 4** Two B6TSRR1P RBT Series Upper Rotator, Lower Level, Strobe (red)
- Option 5** Four 40R020RR\* 400 Series Linear8 Super-LED™ Lighthead (red)
- Option 6** Four 70R040RR 700 Series Linear8 Super-LED™ Lighthead (red)
- Option 7** Two MCFLED2R Micro Edge® Ultra Freedom™ Lighthead (red)
- Option 8** Two MCSLED2R Micro Edge® LFL Liberty LED Lighthead (red)



## ZONE D UPPER

Zone Photometric Requirement- 400,000 CSM



Zone D Upper Front is covered by Light from the Rear or Side of Lightbar from Zone A upper  
 Zone D Upper Rear is covered by One of the options chosen from Zone C Upper

\* Requires optional flange purchased separately  
**Note:** Underscored model numbers indicate need for remote LED ballast.

See inside cover of this booklet to CHOOSE an NFPA approved Strobe Power Supply or a Halogen Flasher.  
 See Amp Draw Charts on pages 36 and 37 for overall amperage consumption.  
 Some LED lighthead have internal flasher module and do not need a flasher unless a specific flash sequence is needed.  
Underscored LED lighthead need a remote ballast to operate.

# CERTIFICATE OF COMPLIANCE WITH NFPA 1901

To Meet Certification, Check Box for the Option Chosen in Each Appropriate Zone

Note: This system is tested and certified by Whelen Engineering Company, Inc. to meet all requirements for the NFPA 1901 Standards for Automotive Fire Apparatus (1999 Edition). See Chapter 11 titled: Low Voltage Electrical Systems & Warning Devices. This System is Certified only if all optical and electrical warning devices are installed and wired in accordance to the 1901 Standard and Specifications; and also in accordance to the device manufacturers mounting and wiring specifications.

FIRE DEPARTMENT \_\_\_\_\_

TRUCK NUMBER \_\_\_\_\_

