

UPPER ZONE AERIAL PACKAGE 2

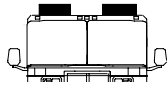
FORM# N0497-14

LED, ROTATING AND FLASHING HALOGEN LIGHTING

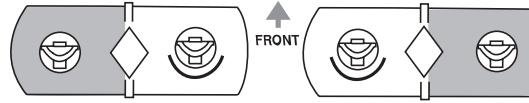
This package meets all upper zone requirements of NFPA 1901 specifications.

ZONE A UPPER

Zone Photometric Requirement- 1,000,000 CSM



Two Model C200A02N Mini Centurion™ 22", standard length



COLOR LEGEND
 □ Clear rotators or Lens
 ■ Red Lens

ZONE B UPPER

Zone Photometric Requirement- 400,000 CSM



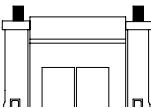
Zone B Upper Front is covered by the Rotator from the Model C200A02N Lightbar from Zone A upper

Zone B Upper Rear is covered by One of the options chosen from Zone C Upper

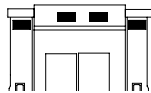
ZONE C UPPER

Choose 1 of the options below

Zone Photometric Requirement- 800,000 CSM

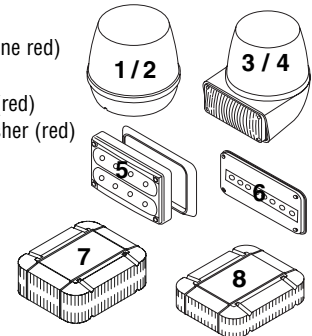


Option 1,2,3,4,7,8



Option 5,6

- Option 1** One RB6TAP and one RB6TRP RB6 Series Rotating Beacons (one amber, one red)
- Option 2** Two RB6TRP RB6 Series Rotating Beacons (red)
- Option 3** Two B6TLRR1P RBT Series Upper Rotator, Lower Level, LED with flasher (red)
- Option 4** Two B6TFRR1P RBT Series Upper Rotator, Lower Level, Halogen with flasher (red)
- Option 5** Four 40R020RR* 400 Series Linear8 Super-LED™ Lightheads (red)
- Option 6** Four 70R040RR 700 Series Linear8 Super-LED™ Lightheads (red)
- Option 7** Two MCFLED2R Micro Edge® Ultra Freedom™ Lightheads (red)
- Option 8** Two MCSLED2R Micro Edge® LFL Liberty LED Lightheads (red)



ZONE D UPPER

Zone Photometric Requirement- 400,000 CSM



Zone D Upper Front is covered by the Rotator from the Model C200A02N Lightbar from Zone A upper

Zone D Upper Rear is covered by One of the options chosen from Zone C Upper

*Requires optional flange purchased separately

Note: Underscored model numbers indicate need for remote LED ballast.

One Model AF6012 Halogen Flasher operating all flashing Halogen Lightheads. (Flasher will run up to 12 total, 6 alternating 6).

See Amp Draw Charts on pages 36 and 37 for overall amperage consumption.

Some LED lightheads have internal flasher module and do not need a flasher unless a specific flash sequence is needed.

Underscored LED lightheads need a remote ballast to operate.



CERTIFICATE OF COMPLIANCE WITH NFPA 1901

To Meet Certification, Check Box for the Option Chosen in Each Appropriate Zone

Note: This system is tested and certified by Whelen Engineering Company, Inc. to meet all requirements for the NFPA 1901 Standards for Automotive Fire Apparatus (1999 Edition). See Chapter 11 titled: Low Voltage Electrical Systems & Warning Devices. This System is Certified only if all optical and electrical warning devices are installed and wired in accordance to the 1901 Standard and Specifications; and also in accordance to the device manufacturers mounting and wiring specifications.

FIRE DEPARTMENT _____

TRUCK NUMBER _____