

This package meets all zone requirements of NFPA 1901 specifications.

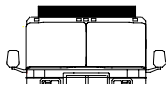
# RESCUE PACKAGE 2

## FLASHING LED / HALOGEN AND ROTATING HALOGEN LIGHTING

### ZONE A UPPER

Choose 1 of the options below

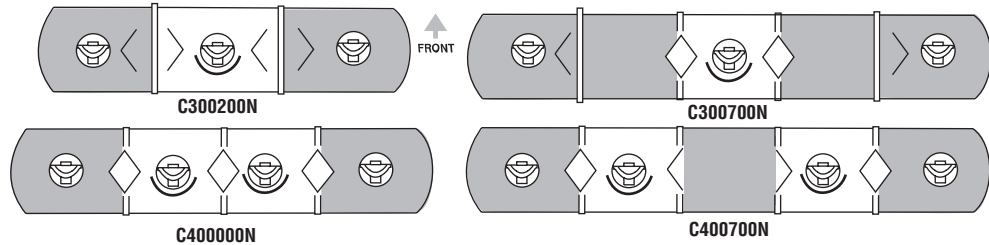
Zone Photometric Requirement- 1,000,000 CSM



- Option 1** One C300200N Centurion™ 3 Rotator Lightbar, 52"
- Option 2** One C300700N Centurion 3 Rotator Lightbar, 72"
- Option 3** One C400000N Centurion 4 Rotator Lightbar, 60"
- Option 4** One C400700N Centurion 4 Rotator Lightbar, 72"

**COLOR LEGEND**

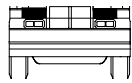
- Clear rotators or Lens
- Red Lens



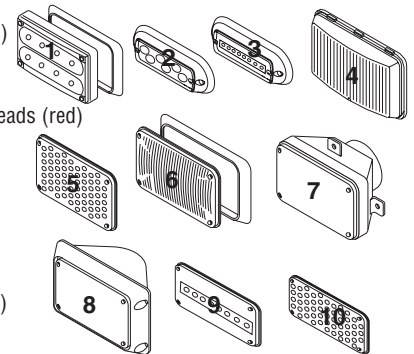
### ZONE A LOWER

Choose 1 of the options below

Zone Photometric Requirement- 150,000 CSM



- Option 1** Two 40R020RR\* 400 Series Linear8 Super-LED™ Lighthoods (red)
- Option 2** Two 50R03FRR\* 500 Series TIR6 Super-LED™ (red)
- Option 3** Two 50R020RR\* 500 Series Linear8 Super-LED™ (red)
- Option 4** Two 580CAARR 508 Series Dual Halogen Surface Mount Lighthoods (red)
- Option 5** Two 60R00FRR 600 Series LED Flasher Surface Mount (red)
- Option 6** Two 60F000RR\* 600 Series Halogen Lighthoods (red)
- Option 7** One 64RTR0RR & 64RTR0LR Left and Right Head Light Rotator for an ATI and Grote Head Light Cluster only (red)
- Option 8** Two 64RTR0FR 64 Series Flanged Halogen Rotator Cast Aluminum Housing, Body Mount (red)
- Option 9** Two 70R040RR 700 Series Linear8 Super-LED™ Lighthoods (red)
- Option 10** Two 70R00FRR 700 Series LED Flasher Surface Mount (red)



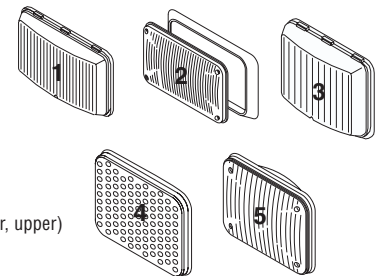
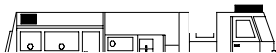
### ZONE B UPPER

Choose 1 of the options below

Zone Photometric Requirement- 400,000 CSM

**FRONT:** One Rotator from the Centurion Lightbar from Zone A upper; plus One Lighthouse from the options below:

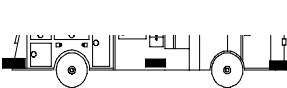
- REAR:**
- Option 1** One 580CAARR 508 Series Dual Halogen Surface Mount Lighthouse (red) (1 rear, upper)
  - Option 2** One 60F000RR\* 600 Series Halogen Lighthouse (red) (1 rear, upper)
  - Option 3** One 810CAARR 810 Series Dual Halogen Surface Mount Lighthouse (red) (1 rear, upper)
  - Option 4** One 90R00FRR 900 Series LED Flasher Surface Mount (red)(1 rear, upper)
  - Option 5** One 90F000RR 900 Series Halogen Lighthouse (red) (1 rear, upper)



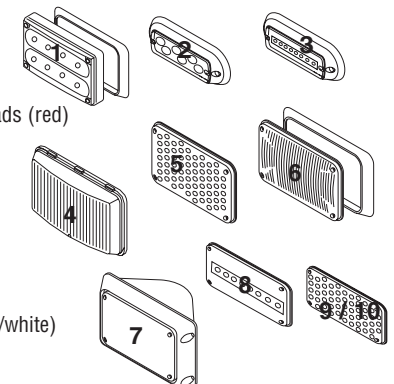
### ZONE B LOWER

Choose 1 of the options below

Zone Photometric Requirement- 150,000 CSM



- Option 1** Two 40R020RR\* 400 Series Linear8 Super-LED™ Lighthoods (red)
- Option 2** Two 50R03FRR\* 500 Series TIR6 Super-LED™ (red)
- Option 3** Two 50R020RR\* 500 Series Linear8 Super-LED™ (red)
- Option 4** Three 580CAARR 508 Series Dual Halogen Surface Mount Lighthoods (red)
- Option 5** Two 60R00FRR 600 Series LED Flasher Surface Mount (red)
- Option 6** Two 60F000RR\* 600 Series Halogen Lighthoods (red)
- Option 7** Two 64RTR0FR 64 Series Flanged Halogen Rotator Cast Aluminum Housing Body Mount (red)
- Option 8** Two 70R040RR 700 Series Linear8 Super-LED™ Lighthoods (red)
- Option 9** Two 70R00FRR 700 Series LED Flasher Surface Mount (red)
- Option 10** Two 70RCSFDR 700 Series LED Flashing Surface Mount (split red/white) Plus One 70R00FRR 700 Series LED Flashing Surface Mount (red)



\*Requires optional flange purchased separately

Note: Underscored model numbers indicate need for remote LED ballast.

# RESCUE PACKAGE 2 (cont.)

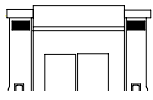
FORM# N0497-6

## FLASHING LED / HALOGEN AND ROTATING HALOGEN LIGHTING

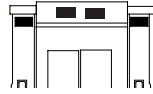
### ZONE C UPPER

Choose 1 of the options below

Zone Photometric Requirement- 800,000 CSM

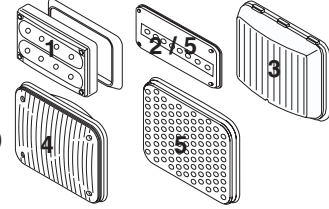


Option 3, 4



Option 1, 2, 5

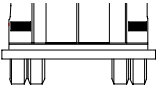
- Option 1** Four 40R020RR\* 400 Series Linear8 Super-LED™ Lighthoods (red)
- Option 2** Four 70R040RR 700 Series Linear8 Super-LED™ Lighthoods (red)
- Option 3** Two 810CAARR 810 Series Halogen Surface Mount Lighthoods (amber)
- Option 4** Two 90F000AR 900 Series Halogen Lighthoods (amber)
- Option 5** Two 90R00FRR 900 Series LED Flashing Lighthood Surface Mount (red) *plus* two 70R040RR 700 Series Linear8 Super-LED™ Flashing Lighthood Surface Mount (red)



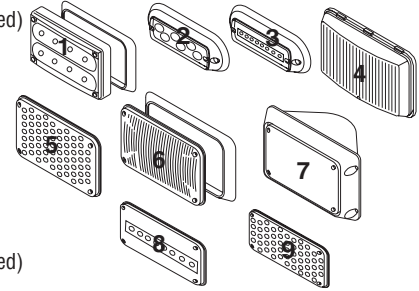
### ZONE C LOWER

Choose 1 of the options below

Zone Photometric Requirement- 150,000 CSM



- Option 1** Two 40R020RR\* 400 Series Linear8 Super-LED™ Lighthoods (red)
- Option 2** Two 50R03FRR\* 500 Series TIR6 Super-LED™ (red)
- Option 3** Two 50R020RR\* 500 Series Linear8 Super-LED™ (red)
- Option 4** Two 580CAARR 508 Series Dual Halogen Surface Mount Lighthoods (red)
- Option 5** Two 60R00FRR 600 Series LED Flasher Surface Mount (red)
- Option 6** Two 60F000AR\* 600 Series Halogen Lighthoods (red)
- Option 7** Two 64RTR0FR 64 Series Flanged Halogen Rotator Cast Aluminum Housing, Body Mount. (red)
- Option 8** Two 70R040RR 700 Series Linear8 Super-LED™ Lighthoods (red)
- Option 9** Two 70R00FRR 700 Series LED Flasher Surface Mount (red)



### ZONE D UPPER

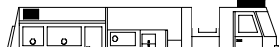
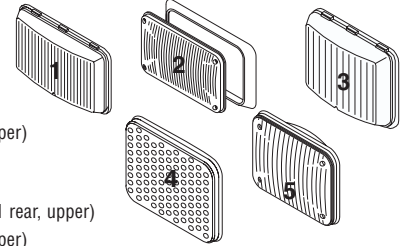
Choose 1 of the options below

Zone Photometric Requirement- 400,000 CSM

**FRONT:** One Rotator from the Centurion™ Lightbar from Zone A upper; *plus* One Lighthood from the options below:

**REAR:**

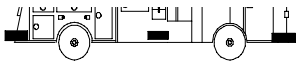
- Option 1** One 580CAARR 508 Series Dual Halogen Surface Mount Lighthood (red) (1 rear, upper)
- Option 2** One 60F000RR\* 600 Series Halogen Lighthood (red) (1 rear, upper)
- Option 3** One 810CAARR 810 Series Dual Halogen Surface Mount Lighthood (red) (1 rear, upper)
- Option 4** One 90R00FRR 900 Series LED Flasher Surface Mount (red)(1 rear, upper)
- Option 5** One 90F000RR 900 Series Halogen Lighthood (red) (1 rear, upper)



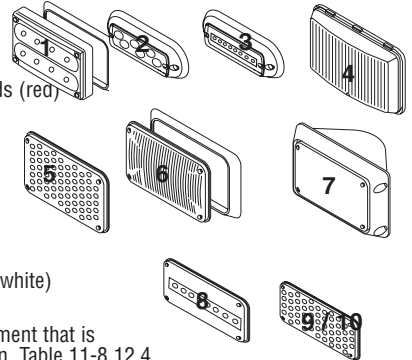
### ZONE D LOWER

Choose 1 of the options below

Zone Photometric Requirement- 150,000 CSM



- Option 1** Two 40R020RR\* 400 Series Linear8 Super-LED™ Lighthoods (red)
- Option 2** Two 50R03FRR\* 500 Series TIR6 Super-LED™ (red)
- Option 3** Two 50R020RR\* 500 Series Linear8 Super-LED™ (red)
- Option 4** Three 580CAARR 508 Series Dual Halogen Surface Mount Lighthoods (red)
- Option 5** Two 60R00FRR 600 Series LED Flasher Surface Mount (red)
- Option 6** Two 60F000RR\* 600 Series Halogen Lighthoods (red)
- Option 7** Two 64RTR0FR 64 Series Flanged Halogen Rotator Cast Aluminum Housing Body Mount (red)
- Option 8** Two 70R040RR 700 Series Linear8 Super-LED™ Lighthoods (red)
- Option 9** Two 70R00FRR 700 Series LED Flasher Surface Mount (red)
- Option 10** Two 70RCSFDR 700 Series LED Flashing Surface Mount (split red/white) *Plus* One 70R00FRR 700 Series LED Flashing Surface Mount (red)



**Note:** Choosing one of the options listed in each zone is the minimum zone requirement that is needed to meet the NFPA 1901 Standard for Automotive Fire Apparatus 1999 Edition, Table 11-8 12.4 (Minimum Optical Power Requirements for Apparatus). If additional lighting is needed to meet lower zone distance requirements only, you can use any of our warning lighthoods shown on pages 33, 34 or 35 of this brochure.

\*Requires optional flange purchased separately

**Note:** Underscored model numbers indicate need for remote LED ballast.

One Model AF6016 Halogen Flasher operating all flashing Halogen Lighthoods. (Flasher will run up to 16 total, 8 alternating with 8). See Amp Draw Charts on pages 36 and 37 for overall amperage consumption.

Some LED lighthoods have internal flasher module and do not need a flasher unless a specific flash sequence is needed. Underscored LED lighthoods need a remote ballast to operate.



## CERTIFICATE OF COMPLIANCE WITH NFPA 1901

To Meet Certification, Check Box for the Option Chosen in Each Appropriate Zone

Note: This system is tested and certified by Whelen Engineering Company, Inc. to meet all requirements for the NFPA 1901 Standards for Automotive Fire Apparatus (1999 Edition). See Chapter 11 titled: Low Voltage Electrical Systems & Warning Devices. This System is Certified only if all optical and electrical warning devices are installed and wired in accordance to the 1901 Standard and Specifications; and also in accordance to the device manufacturers mounting and wiring specifications.

FIRE DEPARTMENT \_\_\_\_\_

TRUCK NUMBER \_\_\_\_\_