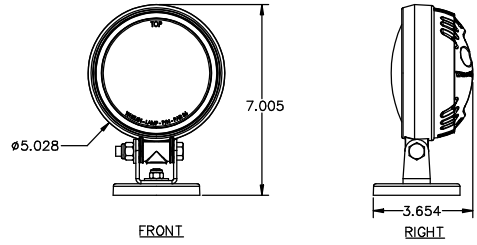
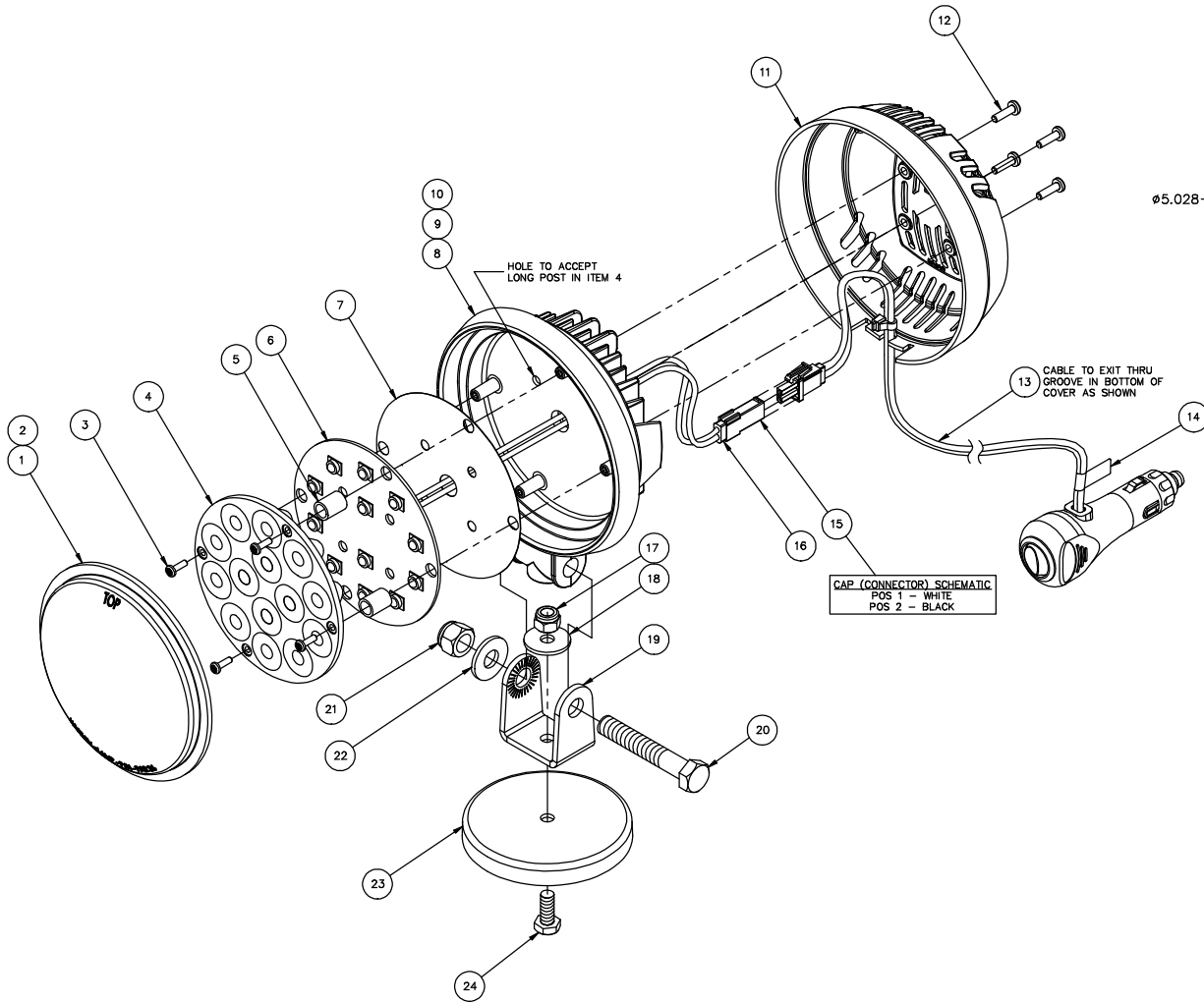


REV	ECN	DESCRIPTION	DATE
-----	-----	-------------	------



**ASSEMBLY INSTRUCTIONS**

- REFLECTOR, PCB ASSY, CO-THERM GASKET, AND HOUSING W/ STANDOFFS TO BE CORRECTLY ALIGNED WITH LONG POST RUNNING INTO HOLE IN HOUSING AT 11 O'CLOCK POSITION. USE #4 SCREWS TO HOLD ASSEMBLY TOGETHER.
- UNIT IS TO BE POTTED FROM REAR THRU OPENING AROUND WIRES AND FILLED TO TOP OF OPENING WITH EPIC RESIN.
- APPLY RTV TO LENS USING AUTO APPLICATOR AND POSITION LENS ONTO HOUSING. HOLD IN POSITION UNTIL RTV HAS CURED.
- ITEMS 17 THRU 24 TO BE ASSEMBLED LOOSELY ONTO BASE OF HOUSING TO COMPLETE ASSEMBLY.
- LABEL IS TO BE APPLIED AROUND CABLE AS SHOWN.

1	24	14-130436-100	SCREW, 1/4-20 X 5/8 HEX HD CAP SS
1	23	65-0010192-00	MAGNET, X-BO NEW DMS (RB80) NICKEL PLATED
1	22	18-1502820-83	WASHER, 3/8" FLAT
1	21	13-156120-092	NUT, 3/8-16 ELASTIC STOP SS
1	20	14-156436-360	BOLT, 3/8-16 X 2-1/4 HEX HEAD SS
1	19	07-246631-000	BRACKET, MAGNET MOUNT - WORK LIGHT
1	18	16-1302820-06	WASHER, 1/4" FLAT, 7/8" OD SS
1	17	13-130111-072	NUT, 1/4-20 ELASTIC STOP 316 SS
1	16	39-2H17430-02	GANG SEAL
1	15	39-0917426-02	CAP. (CONNECTOR) MUMNL
1	14	10-0523584-00	LABEL, WORK LIGHT
1	13	48-0743932-00	CABLE ASSY, W/ MUMNL SOCKETS 12'
4	12	14-06221C-080	SCREW, #6-32 X 1/2" PPHMS SS BO
1	11	11-26A619-000	COVER, REAR - PAR 36 - BLACK
AR	10	68-0716056-03	EPIC RESIN, BLUE (PART B)
AR	9	68-0716056-02	EPIC RESIN, BLUE (PART A)
1	8	11-46A606-107	HOUSING, PAR 36 - SWIVEL MOUNT BLACK
1	7	56-043608-000	GASKET, CO-THERM
1	6	02-016A944-31	PCB ASSY, PAR36 12V 12 LED SMT
4	5	20-0043706-00	STANDOFF, PCB
1	4	68-5969324-01	REFLECTOR, TR PAR36 W/ BEVEL
4	3	14-040285-063	SCREW, #4-40 X 3/8" TORX PH TR/SS BO
AR	2	68-0716586-02	RTV, SILICONE GREY
1	1	68-1181212A30	LENS, CLEAR OPTIC (W/HARDCOAT)
*		01-0686469210	WORK LIGHT ASSY, 4 1/2" ROUND, SUPER LED

QTY.	ITEM	PART NUMBER	DESCRIPTION
			WORK LIGHT ASSY, 4 1/2" ROUND, SUPER LED
MATERIAL: VARIOUS			
FINISH: N/A			
TOLERANCES UNLESS OTHERWISE SPECIFIED: DR. ARC .XX = ±.020 DR. SLP NONE DATE 11/16/09 RELEASE DATE 11/19/09 HOLE# 41/2 .XXX = ±.010 DR. ARG NONE DATE 11/16/09 DATE 11/19/09			
© 2009 WHELEN ENG. CO. INC. CAD CODE 10402 APP:GEM 86469 - - 1 1			