

# Enhance your NFPA 1901 Specification Lighting Packages

## 295HFS SERIES SIREN AMPLIFIERS

All 295HFS Series Sirens meet and exceed California Title XIII, Class A (120dB @ 10') and S.A.E. J1849 when used with Whelen 100 Watt RMS speakers.

295HFS Sirens all feature three siren warning tones, plus airhorn, Public Address and "Hands-Free" operation, Diagnostix™ & SI TEST®. 5 year warranty.

- 295HFS A1 .....Siren amplifier
- 295HFS Q1 .....Similar to 295HFS A1 except with electronic mechanical siren tone in replace of piercer tone
- 295HFS 2 .....Remote siren amplifier (flush mount head)
- 295HFS 3 .....Remote siren amplifier (surface mount head)
- ALPHA 12Q .....100 watt remote siren amplifier (not shown)
- ALPHA 22Q .....200 watt remote siren amplifier



## 100 WATT RMS SIREN SPEAKERS

For bumper and flange mounting, Projector® Series speakers produce 122.5dB, exceeding California Title XIII, Class A (120dB @ 10') and S.A.E. J1849 when used with Whelen 295HFS Series.

- SA31101D .....100 watt speaker for driver side of 2001 to present International 4300/4400 Series chassis
- SA31101P .....100 watt speaker for passenger side of 2001 to present International 4300/4400 Series chassis
- SA390RF .....100 watt speaker, polished aluminum, flat mount
- SA32E97 .....200 watt speaker for Ford E-Series 1992-present, Ford F-Series 2001-present
- SA32G01 .....200 watt speaker for Chevrolet 3500/4500 Series, 2001-present



## SA314 SERIES

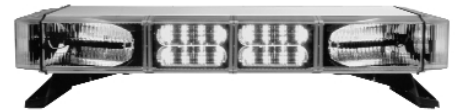
- SA314A .....100 watt compact speaker for behind bumper mounting, natural aluminum
- SA314P .....100 watt compact speaker for behind bumper mounting, black nylon composite
- SACSTFMP .....Optional polished flange casting, flat mount for SA314 Series
- SACSTCMP .....Optional polished flange casting, contoured mount for SA314 Series



## EDGE® ULTRA FREEDOM SERIES LED MINI LIGHTBARS

Class 1, SAE Certified, 28-1/4" long, permanent mount, 15' passenger side cable.

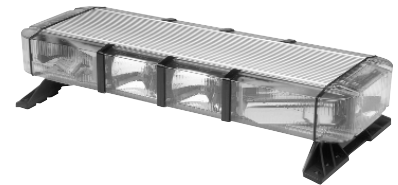
- FT\*\*\*\*P .....Four Linear12 Super-LEDs™
- FT\*\*\*F .....Two Linear12 and two Linear8 Super-LEDs™, front facing



## EDGE 9M SERIES STROBE MINI LIGHTBARS

Class 1, SAE Certified, 28-1/4" long, permanent mount, 15' passenger side cable

- 9MMEDGEP .....Four strobes, (2 front / 2 rear)
- 9MMEDG6P .....Six strobes, (4 front / 2 rear)
- 9MMEDFFD .....Four front facing strobes



## ELECTRONIC FLASHER

3TERM .....3-Terminal Electronic Flasher (Flashing two lamps alternately or simultaneously, 75 DFPM, 20 amp max.)



## GENERAL HEADLIGHT/GRILLE LIGHT FLASHERS

SSF2150 .....100% Solid State, Head Light/Grille Light Flasher, 2 Outlet, 162 Watts per outlet



## UTILITY LIGHT, SELF CONTAINED

UL12\* .....Halogen, flashing / steady burn, flat mount



UL12

\* = Replace asterisk in model number with lens or LED color desired: A=Amber, B=Blue, C=Clear or White, G=Green, R=Red

# Enhance your NFPA 1901 Specification Lighting Packages

## INTERIOR DOME LIGHTS

- 8635C .....Interior dome light, 35 watt halogen rectangular (less cable)  
 CL25\* .....Compartment light, 25 watt, round, surface mount (clear or red lens, less cable)



8635CU



CL25

## DEUTSCH® WATERPROOF CONNECTORS

Substituted for AMP MATE-N-LOK® Connectors (Not Available on all Models)

- W441DIN .....Deutsch 3 pins and connector kit, waterproof (installed on cable)  
 W442DIN .....Deutsch 3 sockets and connector kit, waterproof (installed on lighthouse)

W441DIN



W442DIN

## TRAFFIC ADVISOR™ SERIES

(All Models include Control Head for Light Array) 8 Programmable Flash Patterns Std.

**LED Low Profile, 2-3/4" H X 2-1/4" D, "C" style housing.**

- TAL65 .....6 lamp, 36"  
 TAL85 .....8 lamp, 46-3/4"  
 TAL85\*\* .....6 lamp with two end flashing lamps - 46-3/4"



TAL65



TAL85 / TAL85\*\*

**TIR6 Super-LED™ Low Profile, 2-3/4" H X 2-1/4" D, "C" style housing.**

- TAM65 .....6 lamp, 36"  
 TAM85 .....8 lamp, 46-3/4"  
 TAM85\*\* .....6 lamp with two end flashing lamps - 46-3/4"



TAM65



TAM85 / TAM85\*\*

**Halogen, (twist lock lamps) rectangular aluminum housing 5-3/16" h x 4-3/8" deep**

- TA637A .....6 lamps, 33"  
 TA837A .....8 lamps, 44-1/4"  
 TA4437A .....8 lamps, two piece  
 TA837AMP .....8 lamps, with two end strobe lamps, requires remote power supply.



TA637A



TA837A

**LED and TIR6 SuperLED™ 500 Series, rectangular aluminum housing 5-3/16" H x 4-3/8" D**

- TA837L .....8 LED lamps, 44-1/4"  
 TA837L\*\* .....8 LED lamps, 44-1/4"  
 TA837M .....8 TIR6 Super-LED™ lamps, 44-1/4"  
 TA837M\*\* .....6 TIR6 Super-LED lamps, with two end flashing TIR6 Super-LED™ lamps, 44-1/4"



TA4437A



TA837L

**Edge+Plus™ style housing**

- TA870A .....8 twist-lock halogen lamps, 72"  
 TA870L .....8 LED lamps, 72"



TA837L



TA837M

**Accessories**

Extension cables in 15, 25, 35 and 50' lengths are available for models TA637A, TA837A, TAL65/85\*\*, TAM65/85/85\*\*, TA837L and TA837M.

Substitute PVC cables in 30', 35', 40' and 50' lengths for the standard 15' cable are available for the models TA637A, TA837A, TAL65/85\*\*, TAM65/85/85\*\*, TA837L and TA837M

Substitute TPR cables in 30', 35', 40' and 50' lengths for the standard 20' cable are available for the models TA870A and TA870L



TA870A



TA870L

## SMART ARROW MESSENGER® SERIES

**EDGE+PLUS™, 16 Characters (2 Panel), preprogrammed with your choice of library (Police, EMS/Fire, DOT/Utility), All models include control head.**

- MGM02C0A .....Built-into a 35.25" Edge+Plus housing, amber, (no strobes)  
 MGM02C0R .....Built-into a 35.25" Edge+Plus housing, red, (no strobes)  
 MGM02S0A .....Built-into a 48" Edge+Plus housing, amber, two remote TURB6ASYS  
 MGM02S0R .....Built-into a 48" Edge+Plus housing, red, two remote TURB6ASYS



MGM02S0A



MGM02C0R

**Messenger libraries, installed in Smart Arrow Messenger Series, (No charge option when purchased with a Smart Arrow Messenger (MGM02 Series Only)**

- MLEMS02 .....EMS/Fire library installed in 16-character (2 panel) Messenger

**Options**

- MGC01 .....Control head (standard)  
 MGC02UG .....Premium control head upgrade  
 MGC02 .....Premium control head  
 MGPO2 .....Programming kit includes MGXPORT and software  
 MLSETUP .....Special message programming charge, per message  
 MGXPORT .....Messenger/Serial Communication information transporter



MGC01



MGC02

\* = Replace asterisk in model number with lens or LED color desired: A=Amber, B=Blue, C=Clear or White, G=Green, R=Red

# Enhance your NFPA 1901 Specification Lighting Packages

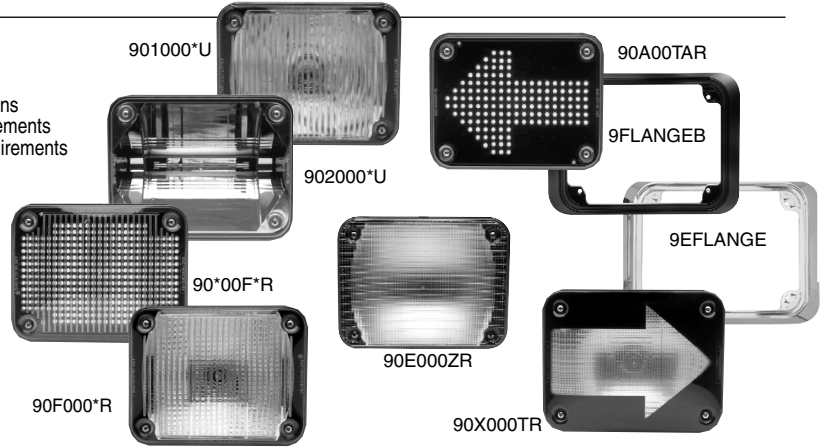
Lightheads require optional mounting, purchased separately, unless noted. LED and Super-LED™ are available in red, amber, blue or white. Strobe and halogen are available in all five safety colors.

## 900 SERIES LIGHTHEADS

- 90\*00F\*R .....Flashing LED, 14 flash patterns
- 90\*00T\*R .....LED turn arrow, (red or amber), 6 flash patterns
- 90R00BRR .....LED brake/tail, 2 patterns, meets SAE requirements
- 90R00XRR .....LED brake/tail, 2 patterns, exceeds SAE requirements
- 902000\*U .....Linear strobe
- 901000\*U .....Non-linear strobe
- 90F000\*R .....Halogen
- 90E000ZR .....8° - 32° gradient scenelight
- 90X000RR .....Incandescent brake/tail/turn
- 90X000QR .....Incandescent red turn, no arrow
- 90X000TR .....Incandescent amber turn, with arrow
- 90J000CR .....Certified (S.A.E., F.M.V.S.S.A.) back-up light

### Optional Mounting (purchased separately)

- 9EFLANGE .....Optional chrome plated flange
- 9FLANGEB .....Optional black flange

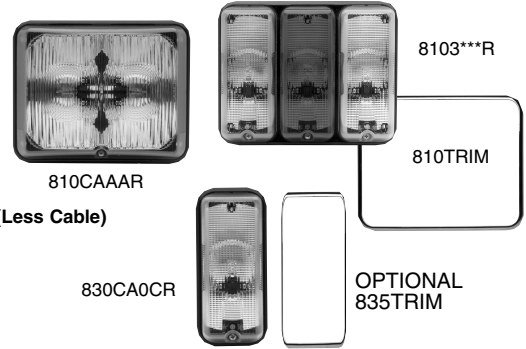


## 81E SERIES - RELAMPABLE HALOGEN LIGHTS (Less Cable)

- 8103\*\*\*R .....Triple halogen, surface mount, stop/tail/turn/back-up light, 3 individual lenses
- 810CA0ZR .....8-32° halogen scenelight, surface mount
- 810CAA\*R .....Dual halogen, surface mount
- 81EC20\*U .....81E Series linear strobe, surface mount

### Optional Mounting (purchased separately)

- 810TRIM .....Optional chrome plated trim ring



## 835 SERIES - RELAMPABLE SINGLE HALOGEN LIGHTS (Less Cable)

- 830CA0CR .....27 watt scenelight / back-up / compartment light, surface mount
- 830CX0\*R .....Brake/turn light, red/amber only

### Optional Mounting (purchased separately)

- 835TRIM .....Optional chrome plated trim ring

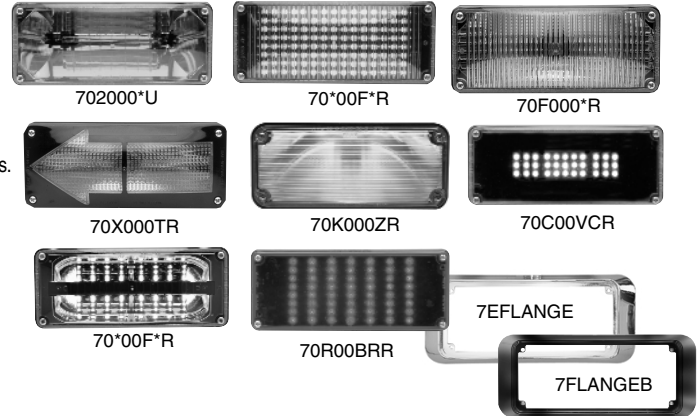


## 700 SERIES LIGHTHEADS

- 702000\*U .....Linear strobe
- 70F000\*R .....Snap-in halogen
- 70\*040\*R .....Linear8 Super-LED™, needs remote ballast
- 70\*00F\*R .....LED, 14 flash patterns
- 70RBSFJR .....LED, split red/blue with split red/blue lens, 14 flash patterns
- 70RCSFDR .....LED, split red/white with split red/white lens, 14 flash patterns
- 70R00BRR .....LED brake/tail/turn, meets SAE requirements, 2 flash patterns.
- 70R00XRR .....LED brake/tail/turn, exceeds SAE requirements, 2 flash patterns.
- 70C00VCR .....Interior/back-up light, minimum intensity
- 70C00WCR .....Interior/back-up light, maximum intensity, 14 flash patterns
- 70A00AAR .....LED amber turn, less arrow, 6 flash patterns
- 70A00TAR .....LED amber turn, sequential Chevron Arrow, multi-flash pattern
- 70K000ZR .....8 - 32° Opti-Scenelight
- 70X000RR .....Incandescent brake light
- 70J000CR .....Certified (S.A.E., F.M.V.S.S.A.) back-up light
- 70X000TR .....Incandescent amber turn, with arrow

### Optional Mounting (purchased separately)

- 7EFLANGE .....Optional chrome plated flange kit
- 7FLANGEB .....Optional black flange kit

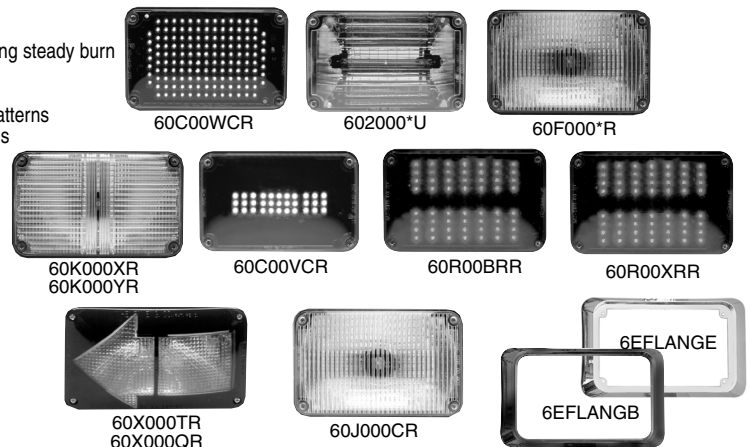


## 600 SERIES LIGHTHEADS

- 60\*00F\*R .....LED, (red, amber, blue or white), 14 flash patterns including steady burn
- 602000\*U .....Linear strobe
- 60F000\*R .....Snap-in halogen
- 60A00TAR .....LED amber turn signal, populated arrow shape, 6 flash patterns
- 60A00AAR .....LED turn light, amber, fully populated, no arrow, 6 patterns
- 60R00BRR .....LED brake/tail light, meets SAE requirements
- 60R00XRR .....LED brake/tail light, exceeds SAE requirements
- 60C00VCR .....LED Interior/back-up light, minimum intensity
- 60C00WCR .....LED Interior/back-up light, maximum intensity
- 60K000XR .....26° Opti-Scenelight
- 60K000YR .....13° Opti-Scenelight
- 60J000CR .....Certified (S.A.E., F.M.V.S.S.A.) back-up light
- 60X000RR .....Incandescent brake/tail light
- 60X000QR .....Incandescent red arrow
- 60X000TR .....Incandescent amber arrow

### Optional Mounting (purchased separately)

- 6EFLANGE .....Optional chrome plated flange
- 6FLANGEB .....Optional black flange



\* = Replace asterisk in model number with lens or LED color desired: A=Amber, B=Blue, C=Clear or White, G=Green, R=Red

# Enhance your NFPA 1901 Specification Lighting Packages

Lighthoods require optional mounting, purchased separately, unless noted. LED and Super-LED™ are available in red, amber, blue or white. Strobe and halogen are available in all five safety colors.

## 508/508E SERIES - RELAMPABLE HALOGEN LIGHTS

Surface mount, no mounting options required, less cable

- 58EC20\*U .....508 linear strobe
- 580CAAZR .....8°-32° halogen scenelight
- 580CX0RR .....Incandescent brake/tail light
- 580CA0CR .....27 watt back-up light, clear lens only
- 580CA0SR .....Incandescent red right arrow
- 580CA0QR .....Incandescent red left arrow
- 580CA0UR .....Incandescent amber right arrow
- 580CA0TR .....Incandescent amber left arrow



Optional Mounting (purchased separately)

- 508TRIM .....Optional chrome plated trim ring to cover standard black flange

## 500 SERIES

- 502000\*U .....Linear strobe
- 50\*03F\*R .....TIR6 Super-LED™, 1 flash pattern and synchronize wire
- 50\*020\*R .....Linear8 Super-LED™, remote ballast needed
- 5S\*00F\*R .....LED, surface mount, 14 flash patterns, (no mounting option required)
- 50\*00F\*R .....LED, 14 flash patterns
- 50K000\*R .....Snap-in halogen
- 5SCA0CCR .....Compartment light, surface mount, (no mounting option required)

Optional Mounting (purchased separately)

- 5FLANGEB .....Black flange kit
- 5FLANGEC .....Chrome plated flange kit
- 5FLANGEP .....Polished aluminum flange kit
- 5GROMMET .....Grommet mount kit
- 5HSGB1 .....7/8" to 1" round bar mount kit
- 5HSGB125 .....1-1/4" round bar mount kit
- 5HSGPED .....Pedestal swivel mount kit
- 5TSMAB .....Black surface mount adapter for 50\*03F\*R only
- 5TSMAP .....Chrome plated surface mount adapter for 50\*03F\*R only

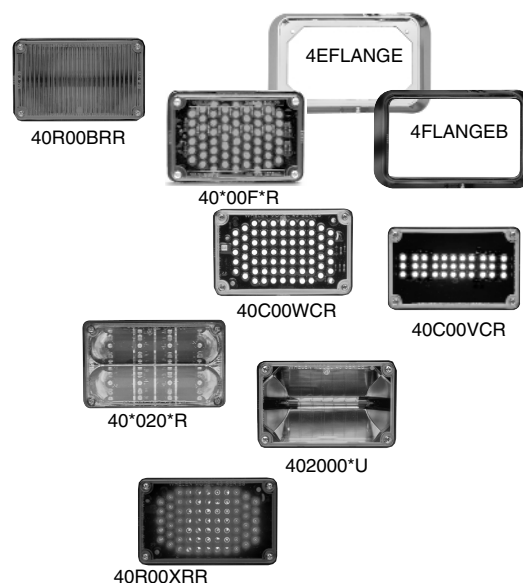


## 400 SERIES

- 402000\*U .....Linear strobe
- 40\*00F\*R .....Flashing LED, 14 flash patterns
- 40\*020\*R .....Linear8 Super-LED™, remote ballast needed
- 40R00BRR .....LED brake/tail/turn (auxiliary)
- 40R00XRR .....Incandescent brake/tail/turn (auxiliary)
- 40C00VCR .....Interior back-up Light, minimum intensity
- 40C00WCR .....Interior back-up Light, maximum intensity

Optional Mounting (purchased separately)

- 4EFLANGE .....Optional chrome plated flange kit
- 4FLANGEB .....Optional black flange kit



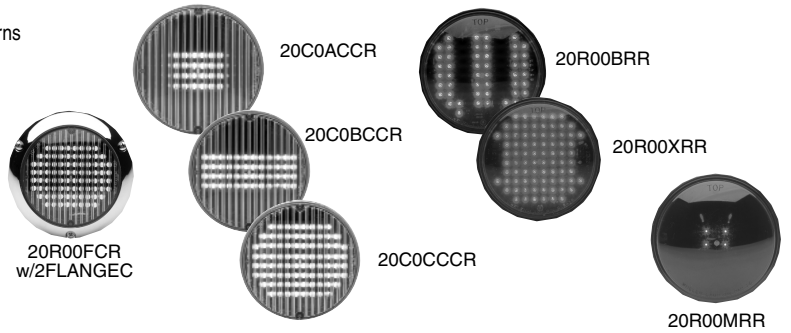
\* = Replace asterisk in model number with lens or LED color desired: A=Amber, B=Blue, C=Clear or White, G=Green, R=Red

# Enhance your NFPA 1901 Specification Lighting Packages

Lightheads require optional mounting, purchased separately, unless noted. LED and Super-LED™ are available in red, amber, blue or white. Strobe and halogen are available in all five safety colors.

## 200 SERIES, PAR-32

- 20\*00F\*R .....LED (red, amber, blue or clear), 14 flash patterns
- 20R00BRR .....Brake/turn/tail, minimum intensity
- 20R00XRR .....Brake/turn/tail, maximum intensity
- 20A00AAR .....Amber turn
- 20C00WCR .....Back-up
- 20C0ACCR .....Compartment light, intensity level 1, clear
- 20C0BCCR .....Compartment light, intensity level 2, clear
- 20C0CCCR .....Compartment light, intensity level 3, clear
- 20A00MAR .....Clearance light, amber
- 20R00MRR .....Clearance light, red



### Optional Mounting (purchased separately)

- 2FLANGEC .....Optional chrome plated flange kit
- 2FLANGEB .....Optional black flange kit
- 2GROMMET .....Grommet mounting kit

## T SERIES, PAR 16

- T0R00MRR .....Clearance / compartment LED, red
- T0A00MAR .....Clearance / compartment LED, amber
- T0\*00F\*R .....LED, 1 flash pattern (red, amber, blue or white)
- T0C0CCCR .....LED compartment light, intensity level 3



### Optional Mounting (purchased separately)

- TFLANGEB .....Black flange option
- TFLANGEC .....Chrome flange option
- TGROM2 .....2" grommet mounting kit

## TIR3 Super-LED™ Light Module

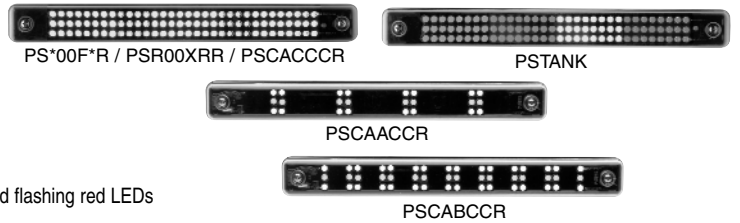
- RS\*030CR .....Two-wire, steady on (remote flasher purchased separately)
- RS\*03FCR .....Three-wire, 15 ScanLock™ flash patterns, including steady on
- RS\*03ZCR .....Four-wire, 10 ScanLock™ flash patterns plus synchronization



## STRIP-LITE™ SERIES,

Surface mount, requires no optional mounting, color LEDs with clear outer lens.

- PS\*00F\*R .....LED warning, 14 flash patterns (red, amber, blue or white)
- PSR00XRR .....Brake/tail/turn, 2 flash patterns
- PSCAACCR .....Compartment light, intensity level 1
- PSCABCCR .....Compartment light, intensity level 2
- PSCACCCR .....Compartment light, intensity level 3
- PSTANK .....Water tank status light, steady burn green, blue, amber and flashing red LEDs (Requires customer supplied sensors)



## LIGHTHEAD CASTINGS FOR 400, 600 & 700 SERIES LIGHTHEADS

### 400 Series Optional Mounting (purchased separately)

- GE4KT3LP .....Grille casting, for Ford E-Series, driver side, 2003
- GE4KT3RP .....Grille casting, for Ford E-Series, passenger's side, 2003
- GF4KT9LP .....Grille casting, for Ford F-Series, driver side, 1999-present
- GF4KT9RP .....Grille casting, for Ford F-Series, passenger side, 1999-present
- 4EGRILP .....Grille-Master™, chrome housing with swivel bracket
- 4EGRILB .....Grille-Master, black housing with swivel bracket



### 600 Series Optional Mounting (purchased separately)

- CAST1L .....Polished cast aluminum housing, for horizontal mounting, 1 lamp
- CAST3 .....Polished cast aluminum housing, for vertical mounting, 3 lamp
- PLAST3V .....ABS chrome plated housing, vertical mounting, 3 lamp
- CAST3H .....Polished cast aluminum housing, for horizontal mounting, 3 lamp
- CAST4V .....Polished cast aluminum housing, for vertical mounting, 4 lamp
- PLAST4V .....ABS chrome plated housing, vertical mounting, 4 lamp



### 700 Series Optional Mounting (purchased separately)

- 7EGRILP .....Grille-Master, chrome housing with swivel bracket
- 7EGRILB .....Grille-Master, black housing with swivel bracket
- 7GILKT1 .....LED grille castings for International Chassis only
- 7CAST1 .....Polished cast aluminum housing, for horizontal mounting, 1 lamp
- 7CAST3 .....Polished cast aluminum housing, for vertical mounting, 3 lamp
- 7GIKT1\* .....Polished grille housing, sold in pairs for 2001, 4300/4400 International® chassis with stationary grille.
- 7GIKT2\* .....Polished grille housing, sold in pairs for 2001, 4300/4400 International chassis with removable grille.
- 7GILKT1\* .....Polished grille housing for LED only, sold in pairs for 2001, 4300/4400 International chassis with stationary grille.
- 7GILKT2\* .....Polished grille housing, sold in pairs for 2001, 4300/4400 International chassis with removable grille.



Note: All 600 and 700 Lighthead styles will fit the 1, 3, 4 lamp position cast/ABS housings.

\* = Replace asterisk in model number with lens or LED color desired: A=Amber, B=Blue, C=Clear or White, G=Green, R=Red