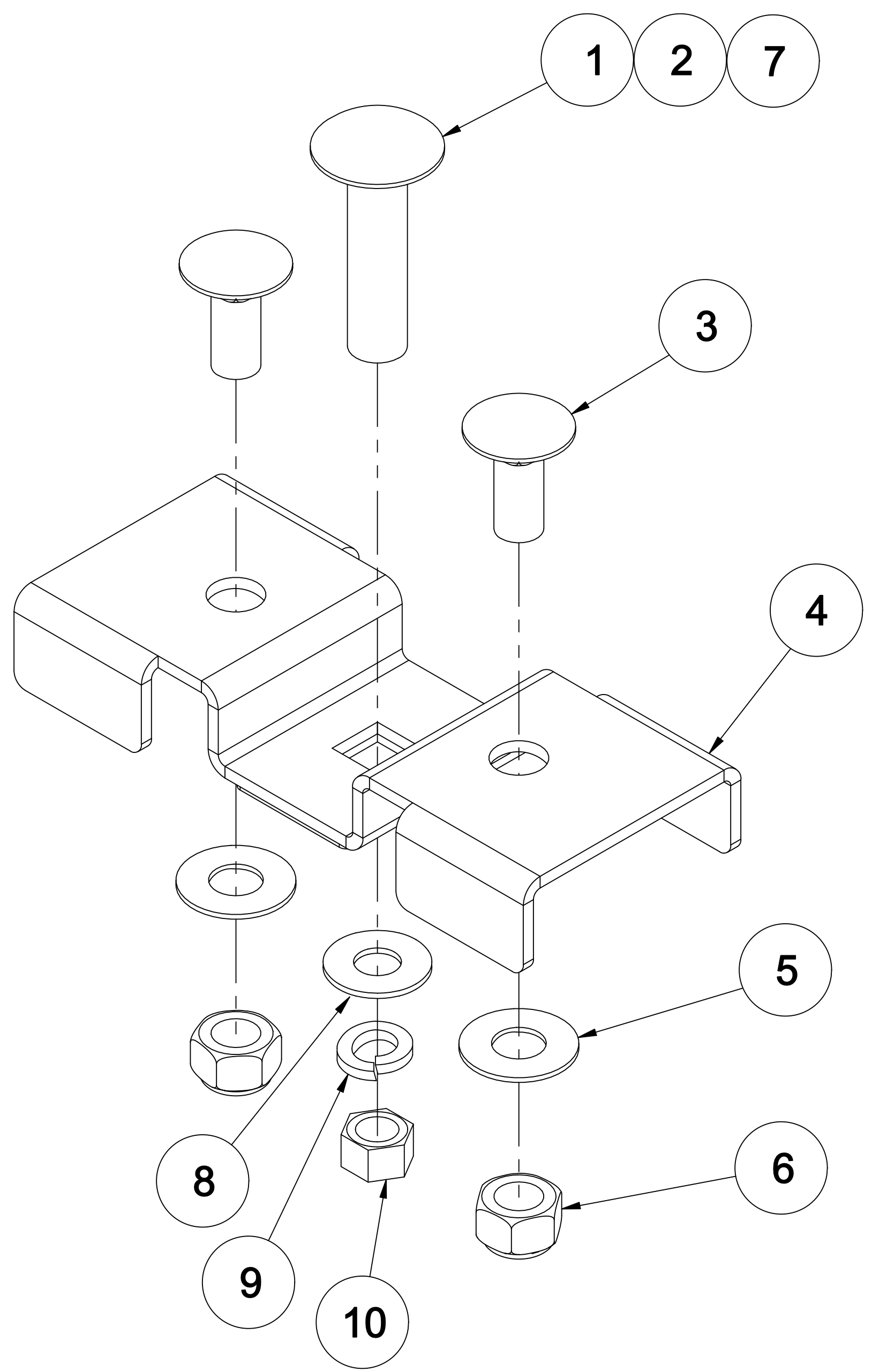


REV	ECN	DESCRIPTION	DATE
A	56820	ADD -02/3 & HARDWARE	3/22/19



NOTE:
 NO ASSEMBLY REQUIRED.
 ALL ITEMS TO SHIP LOOSE.
 PARTIAL KIT SHOWN FOR REFERENCE ONLY.

A	3	2	2	2	10	13-156120-090	NUT, 3/8-16 HEX
A	3	2	2	2	9	16-1532220-10	WASHER, 3/8" SPLIT LOCK
A	3	2	2	2	8	16-1503220-60	WASHER, 3/8" FLAT STAINLESS STEEL
A	3	2	-	-	7	14-156066-320	BOLT, 3/8-16 X 2" CARRIAGE SS
	6	4	4	4	6	13-148132-082	NUT, 5/16-18 ELASTIC STOP BRASS NICKEL PLATE
	6	4	4	4	5	16-1402420-05	WASHER, 5/16" FLAT SS 3/4" OD
	3	2	2	2	4	07-247959-000	BRACKET, BOLT MOUNT CERIDIAN LIGHTBAR
	6	4	4	4	3	14-148046-120	BOLT, 5/16-18 X 3/4" CARRIAGE SS
	-	-	2	-	2	14-156066-120	BOLT, 3/8-16 X 3/4" CARRIAGE SS
	-	-	-	2	1	14-156066-240	BOLT, 3/8-16 X 1-1/2" CARRIAGE SS
A	*					01-046H848-03	KIT, STUD MOUNT, CERIDIAN W/ 2" STUD (SET OF 3)
A	*					01-046H848-02	KIT, STUD MOUNT, CERIDIAN W/ 2" STUD (PAIR)
		*				01-046H848-01	KIT, STUD MOUNT, CERIDIAN W/ 3/4" STUD (PAIR)
			*			01-046H848-00	KIT, STUD MOUNT, CERIDIAN W/ 1 1/2" STUD (PAIR)
QTY.	QTY.	QTY.	QTY.	ITEM	PART NUMBER	DESCRIPTION	

THIS DRAWING IS PROPRIETARY TO THE WHELEN ENG. CO. INC., ANY REPRODUCTION, DISCLOSURE OR USE OF THIS DRAWING WITHOUT WRITTEN AUTHORIZATION FROM WHELEN ENG. CO. INC. IS PROHIBITED

WHELEN® 51 WINTHROP ROAD
 CHESTER, CT 06412-0684
 ENGINEERING COMPANY INC. TELEPHONE (860)526-9504

**KIT,
 STUD MOUNT
 CERIDIAN**

TOLERANCE: UNLESS OTHERWISE SPECIFIED ANGLES ±1/2° .XX = .020 .XXX = .010	DR. KPM CH. SJP ENG. JHL APP. GWS	SCALE NONE	DATE 12/07/17	RELEASE DATE 1/25/18
© 2017 WHELEN ENG. CO. INC. CAGE CODE 10402	DWG NO. 6H848	REV A	ISSUE -	SHEET OF 1 1