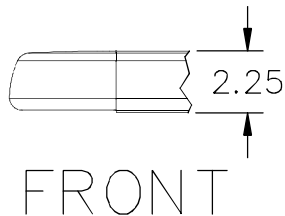
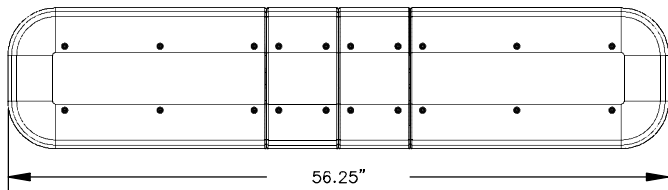
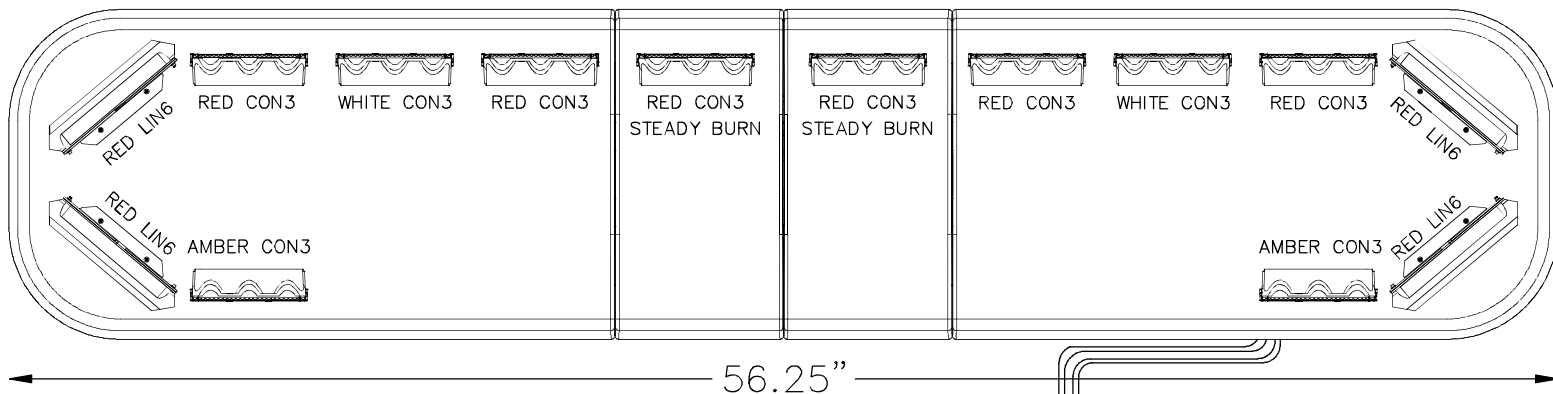


OVERALL LENGTH

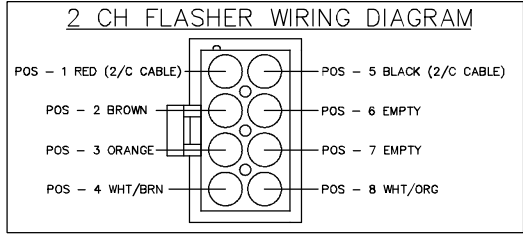
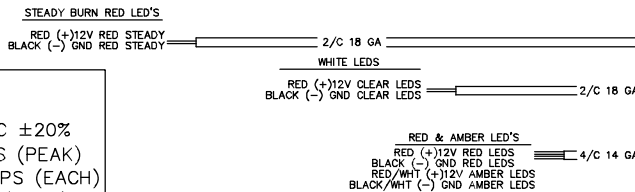


QTY.	MODEL
1	JE2NFPA
2	JDCR
2	JDCA
1	02-0486119-00



SPECS

INPUT VOLTAGE — 12.8VDC ±20%
 LIGHTBAR CURRENT—9 AMPS (PEAK)
 CON3 CURRENT — 0.5 AMPS (EACH)
 LIN6 CURRENT — 1 AMP (EACH)
 DUTY CYCLE — 40% (MAX)



- NOTES:
- 1.) SEE QUOTE FOR MODEL AND PRICING INFO.
 - 2.) THIS DRAWING MUST ACCOMPANY ALL PURCHASE ORDERS.
 - 3.) P/N: 02-0486119-00 TO RUN STEADY BURN LIGHTS. SEE WIRING DIAGRAM FOR REFERENCE.
 - 4.) FOR INTERNAL WIRING INSTRUCTION REFER TO DRAWING # 86119.
 - 6.) ALL RED LED'S TO RUN OFF FRONT BOARD. USE "Y" HARNESS TO CONNECT CORNER'S TOGETHER.
 - 7.) RUN THE REAR AMBER LIGHTS ONLY WITH THE PC BOARDS REAR OUTPUT.
 - 8.) THE ABOVE CONFIGURATION COMES STANDARD WITH CLEAR DOMES AND MKEZ7 MOUNTING KIT.
 - 9.) CALL DEREK ZAREMBA EXT. 2268 WITH ANY QUESTIONS REGARDING THIS CONFIGURATION.

© 2018 COPYRIGHT, WHELEN ENGINEERING COMPANY PIONEERS IN SAFETY SIGNALS

HME P/N: 62749-75
 CAL FIRE
 56" JUSTICE LIGHTBAR

WHELEN ENGINEERING COMPANY
 ROUTE 145
 TELEPHONE (860) 526-9504
 CHESTER, CT 06412-0684

DR. DEZ	SCALE NONE	SHEET 1 OF 1
CH. DEZ	DATE 02/28/18	