



Videojet 1580

Illustrated Parts Breakdown

P/N 463172-21
Revision AD, March 2023

Copyright March 2023, Videojet Technologies Inc. (herein referred to as Videojet).
All rights reserved.

This document is the property of Videojet Technologies Inc. and contains confidential and proprietary information owned by Videojet. Any unauthorized copying, use or disclosure of it without the prior written permission of Videojet is strictly prohibited.

Videojet Technologies Inc.

1500 Mittel Boulevard
Wood Dale, IL
60191-1073 USA
www.videojet.com

Phone: 1-800-843-3610
Fax: 1-800-582-1343
Int'l Fax: 630-616-3629

Offices - USA: Atlanta, Chicago, Los Angeles, Philadelphia
INT'L: Canada, France, Germany, Ireland, Japan, Spain,
Singapore, The Netherlands, The United Kingdom
Distributors Worldwide

Table of Contents

Section 1 Introduction	1-1
1.1 About this Guide	1-1
1.2 Ordering Parts, Accessories, and Supplies	1-1
1.2.1 To Order by Telephone	1-1
1.2.2 To Order by Fax	1-1
1.2.3 To Order by the Internet.....	1-1
Section 2 Illustrated Parts List	2-1
2.1 How to Read the IPL.....	2-1
2.1.1 Illustrations	2-1
2.1.2 Labelling.....	2-1
2.2 Videojet 1580 Printer Parts	2-2
2.2.1 Cables.....	2-36
2.2.2 Power Cord	2-37
2.3 Optional Accessories	2-38
2.3.1 Beacon Assembly	2-38
2.3.2 Air Dryer Assembly	2-39
2.3.3 Wash Station.....	2-40
2.3.4 Universal Stand.....	2-41
2.3.5 Printhead Stand	2-42
2.3.6 Printer Wall Mount	2-44
2.3.7 Power Conditioner	2-45
2.4 Miscellaneous Accessories.....	2-45
2.4.1 Printhead Holder	2-45
2.4.2 Product Detectors	2-45
2.4.3 DIN Plugs.....	2-46
2.4.4 Encoders.....	2-46
2.4.5 Connectivity	2-47
2.5 Tools Kit.....	2-48
2.5.1 The Service Tool Kit (611248)	2-48

Section 1 Introduction

1.1 About this Guide

This manual shows the replacement parts, and accessories, that are available for the Videojet 1580 printer.

Products described in this manual, and products that can be used with the system, are subject to continuous improvement and may change without notice.

The Illustrated Parts Breakdown is intended for use only by qualified Videojet service personnel, and those customers who are qualified trained service or maintenance personnel.

⚠ WARNING

Customers who intend to service and maintain the printer themselves must only have qualified personnel perform those procedures. Qualified personnel are those who have undergone the proper technical training (successful completion of a training course covering this equipment), have experience to work on this equipment, and are aware of the hazards to which they will be exposed.

1.2 Ordering Parts, Accessories, and Supplies

For your convenience, you can order replacement parts, accessories, and supplies from Videojet by telephone, by fax, or through our Internet ordering service. Please have the following information available to ensure quick, easy, and accurate service.

- Your customer number
- Your name and telephone number
- Your P.O. (Purchase Order) number
- Your preferred method of delivery
- The part number and quantity of all items required

1.2.1 To Order by Telephone

Call Videojet at 1-800-843-3610 and speak to our Customer Service Representatives. Telephone hours are 7:00 a.m. to 7:00 p.m., Monday to Friday (Central Standard or Daylight Time). In emergencies, please contact our 24 - hour Technical Assistance Department at the same telephone number.

1.2.2 To Order by Fax

Fax orders can be sent 24 hours a day, 7 days a week:

- 1-800-582-1343 (USA)
- 630-616-3629 (International)

1.2.3 To Order by the Internet

Contact at www.videojet.com. Web orders can be placed 24 hours a day, 7 days a week. You can also view invoice status, and payment and sales order history on this site.

Section 2 Illustrated Parts List

The Illustrated Part List (IPL) contains the illustrations and the parts lists for the different assemblies in the printer. The parts lists give the part numbers, description and quantity of all the items and the modules in the printer. You can order the items and the modules for which the part numbers are given.

This manual contains the following informations:

- [How to Read the IPL](#)
- [Videojet 1580 Printer Parts](#)

2.1 How to Read the IPL

This section describes how the higher assemblies are broken down to their related sub assemblies and other separate parts.

2.1.1 Illustrations

[Table 1](#) shows the symbols used to indicate the different levels of main assemblies in a printer, and the sub assemblies under the main assembly.

Assembly	Symbol
Main Assembly	□
Sub Assembly 1	⬡
Sub Assembly 2	○

The diagram illustrates the hierarchy of assembly symbols. It shows a vertical flow from 'Main Assembly' to 'Sub Assembly 1' to 'Sub Assembly 2'. Each level is connected to its corresponding symbol by a horizontal arrow pointing right. Additionally, vertical arrows point downwards from 'Main Assembly' to 'Sub Assembly 1', and from 'Sub Assembly 1' to 'Sub Assembly 2', indicating the sub-assembly relationship.

Table 1: Symbols Representation - Assemblies

2.1.2 Labelling

A letter is assigned to the main assemblies of a printer and a number is assigned to each sub assembly under the main assembly.

For example: If A, B, C and D identify the main assemblies of a printer, then letter-number sequence A1, A2 and so on identify sub assemblies below each main assembly in a sequence.

- The letters “I” and “O” are not used to avoid confusion with the numbers 1 and 0.

2.2 Videojet 1580 Printer Parts

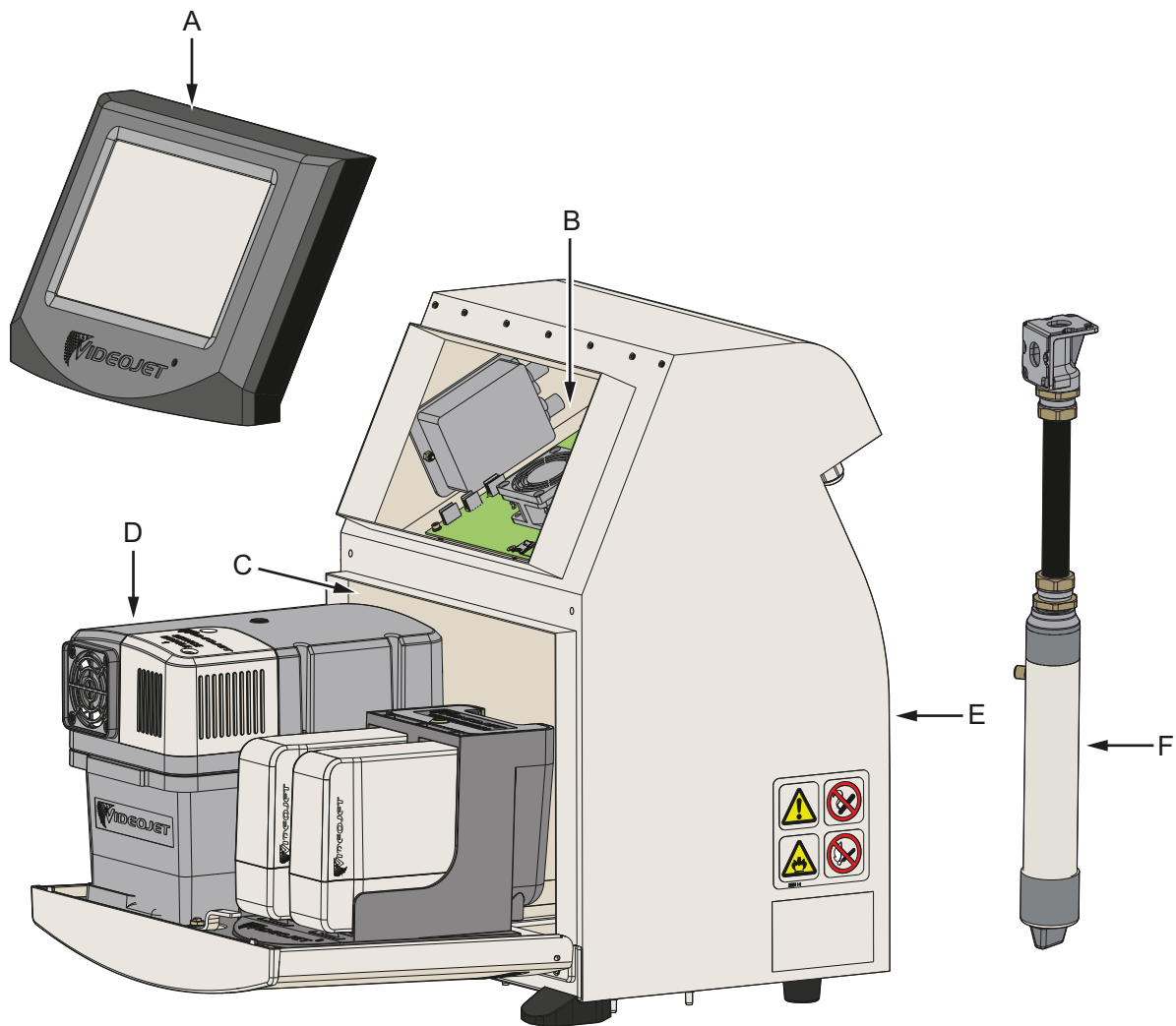


Figure 1: Main Parts of the Printer

Item	Descriptions	Sub-assembly
A	Touch Screen Display Unit	Refer to Table 3
B	Electronics Compartment	Refer to Table 4
C	Ink Compartment	Refer to Table 9
D	Ink System	Refer to Table 19
E	Cabinet	Refer to Table 26
F	Printhead	Refer to Table 27

Table 2: Videojet 1580 Printer Assemblies

A

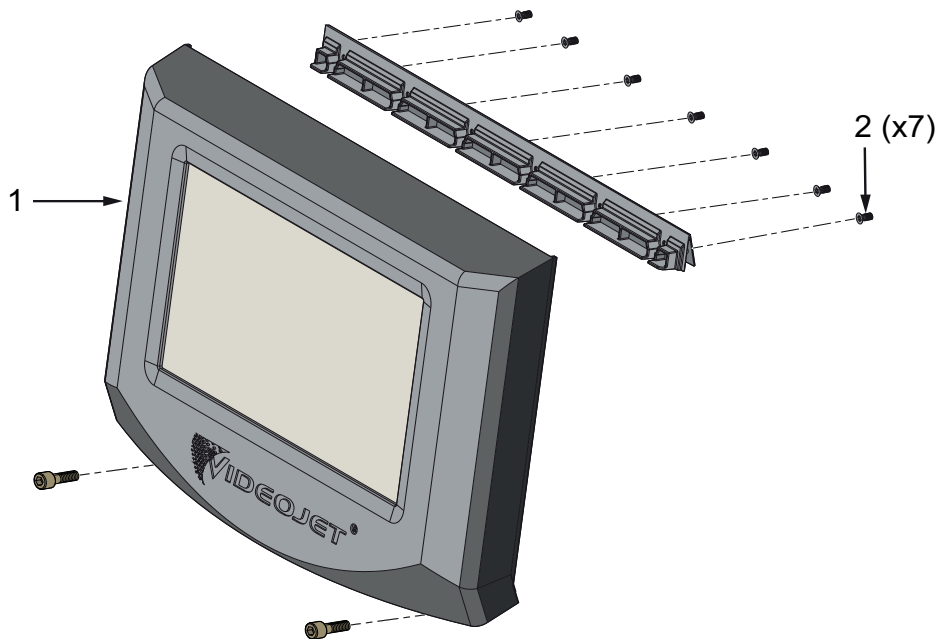


Figure 2: Touch Screen Display Unit

Item	Part Number	Descriptions	Quantity	Sub-assembly
A	613615	Touch Screen Assembly with Cable		
1		Touch Screen Display	1	
2		Torx Screw	7	
3*		Washer	2	
4*		Nut	1	
5*	611585	Display Door Stay	1	

Table 3: Touch Screen Display Parts List

* Item not shown in Figure

B

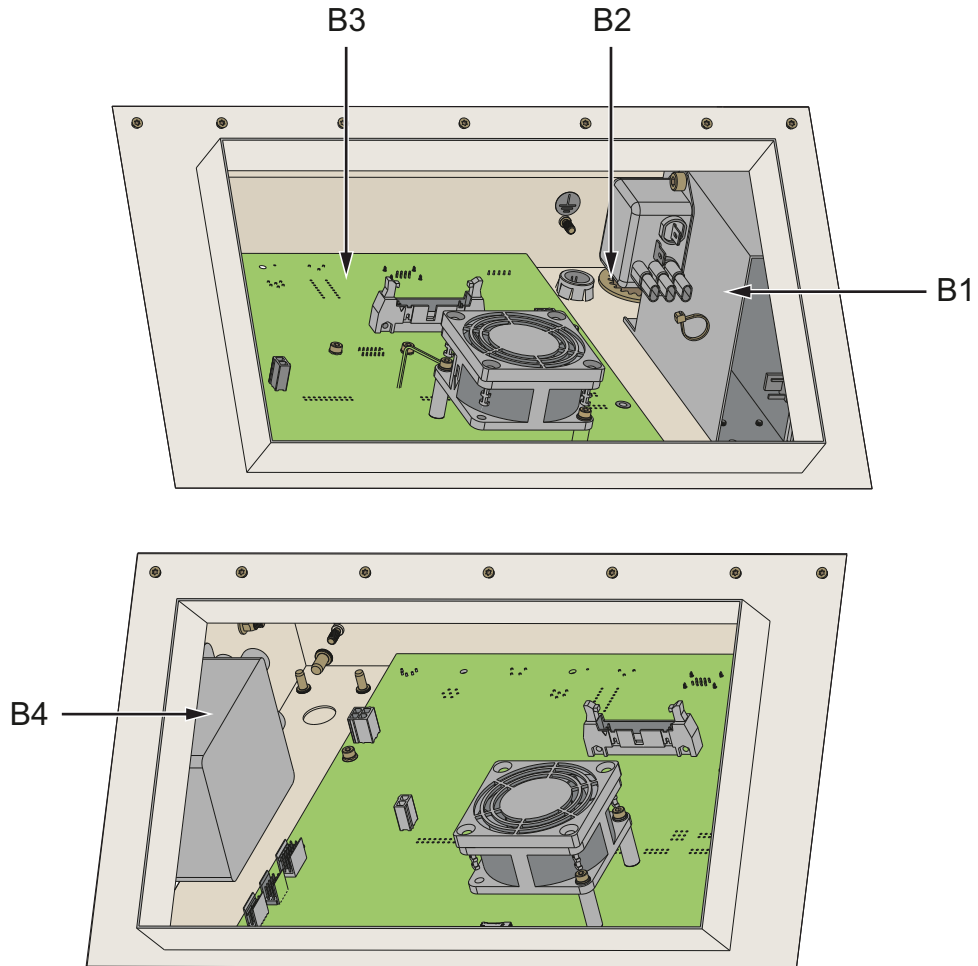


Figure 3: Electronics Compartment

Item	Part Number	Descriptions	Quantity	Sub-assembly
B		Electronics Compartment		
B1	613619	Power Supply Assembly		Refer to Table 5
B2	613620	Power Switch		Refer to Table 6
B3	613594 (IP55) 611395 (IP65)	Main Control Board Assembly including Fan		Refer to Table 7
B4	613595	EHT Module Assembly		Refer to Table 8

Table 4: Electronics Compartment Assemblies

B1

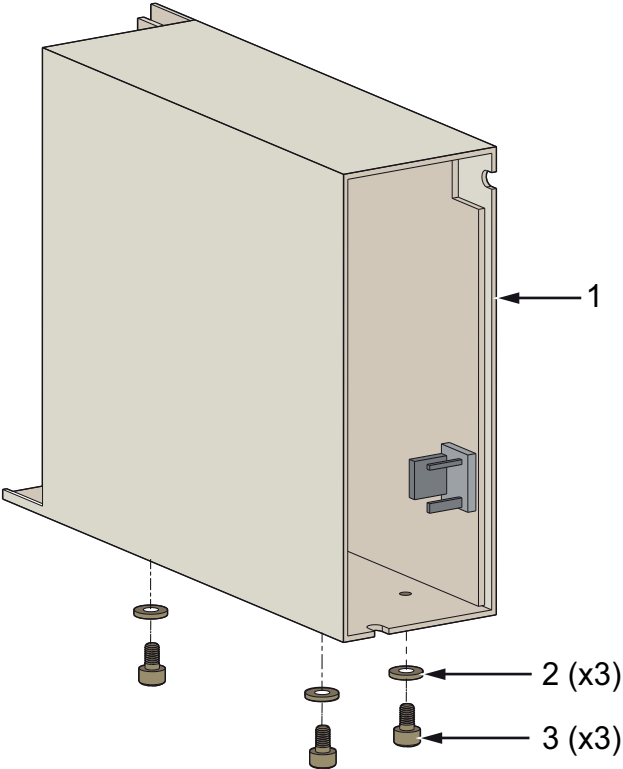


Figure 4: Main Power Supply Unit

Item	Part Number	Descriptions	Quantity	Sub-assembly
B		Electronics Compartment		
B1	613619	Power Supply Assembly		
1		Power Supply	1	
2		Washer	3	
3		Socket-head Cap Screw	3	

Table 5: Main Power Supply Unit

B2

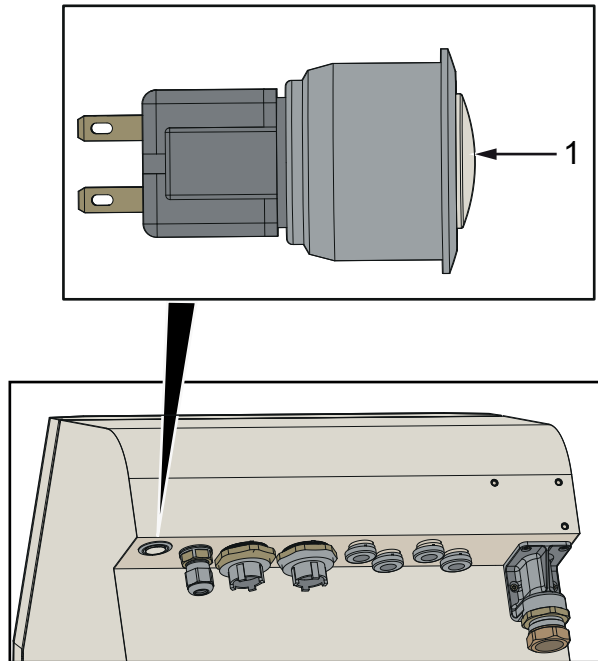


Figure 5: Power Switch

Item	Part Number	Descriptions	Quantity	Sub-assembly
B		Electronics Compartment		
B2	613620	Power Switch Assembly		
1		Switch	1	
2*		Internal Locking Washer	1	

Table 6: Power Switch

* Item not shown in Figure

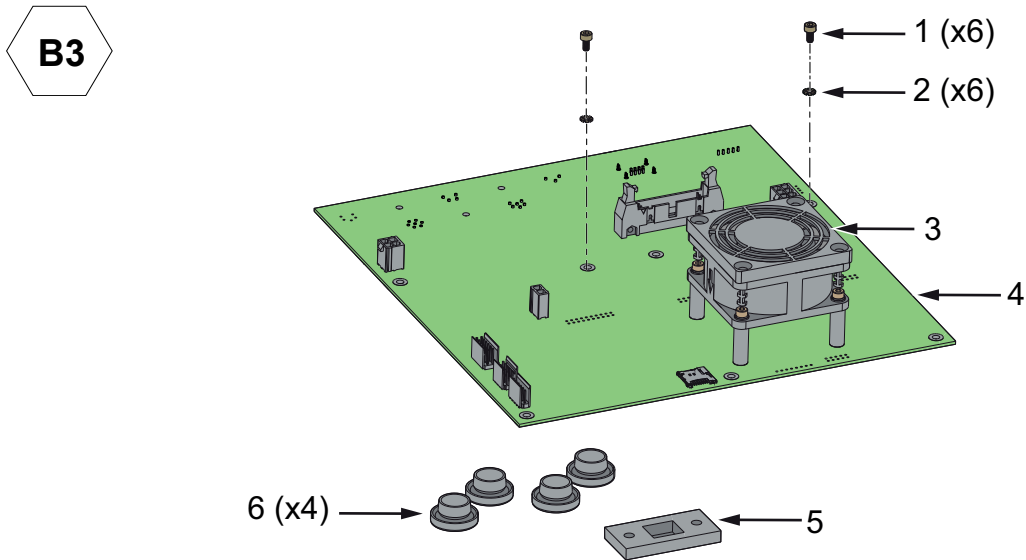


Figure 6: Main Control Board

Item	Part Number	Descriptions	Quantity	Sub-assembly
B		Electronics Compartment		
B3	613594 (IP55) 611395 (IP65)	Main Control Board Assembly		
1		Socket-head Cap Screw	6	
2		Lock Washer	6	
3		Electronics Compartment Fan Assembly	1	
4		Main Controller Board (MCB)	1	
5		MCB Gasket	1	
6		Protection Cap/Blanking Plug	6	
7*	611242	Micro SD Card	1	
8*	SP234609	Battery	1	

Table 7: Main Control Board

* Item not shown in Figure

B4

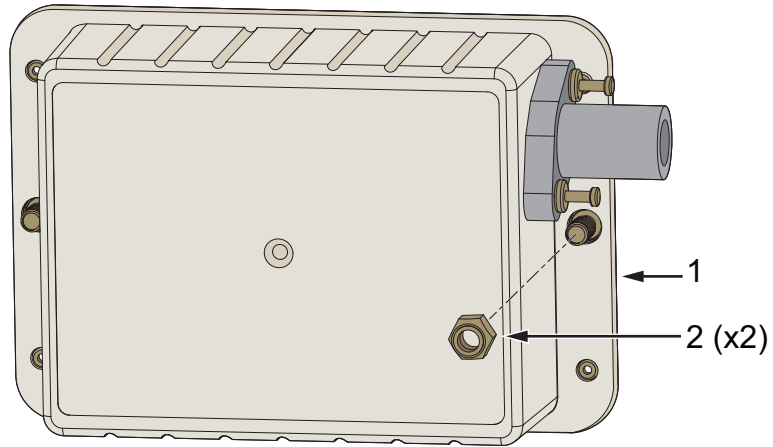


Figure 7: EHT Module

Item	Part Number	Descriptions	Quantity	Sub-assembly
B		Electronics Compartment		
B4	613595	EHT Assembly		
1		EHT Module with Cable	1	
2		Nyloc Nut	2	

Table 8: EHT Module

C

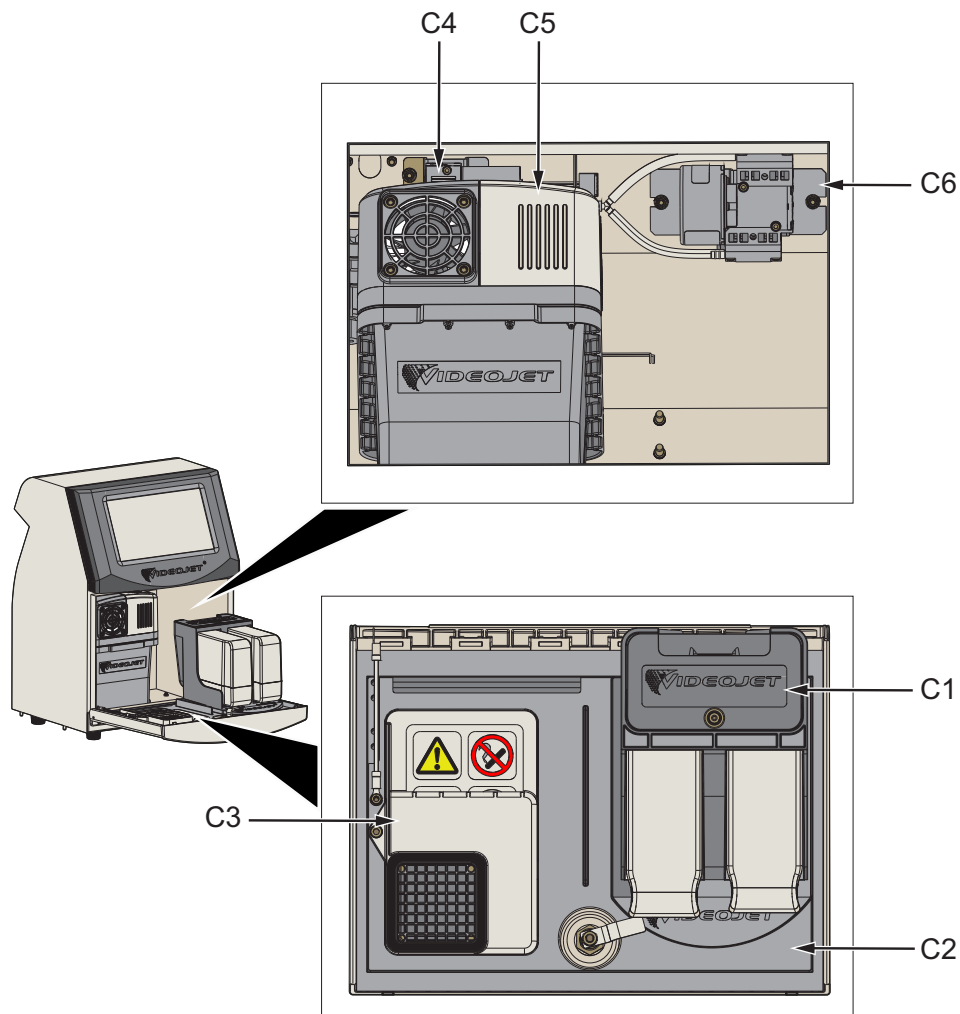


Figure 8: Ink Compartment

Item	Part Number	Descriptions	Quantity	Sub-assembly
C		Ink Compartment		
C1	613598	Solvent Control Module Assembly		Refer to Table 10
C2	613596	Ink System Door Assembly		Refer to Table 11
C3	611221	Air Filter		Refer to Table 12
C4	613617	Gutter Pump Assembly		Refer to Table 13
C5	613597	Service Module 1 Assembly		Refer to Table 14
C6	611396	Positive Air Pump (IP65 only)		Refer to Table 15
C7*	611167	Flush Filter		Refer to Table 16
C8*	239415	Inline Filter		Refer to Table 17
C9*	611423	Fluid Support Assembly		Refer to Table 18

Table 9: Ink Compartment Assemblies

* Item not shown in Figure

C1

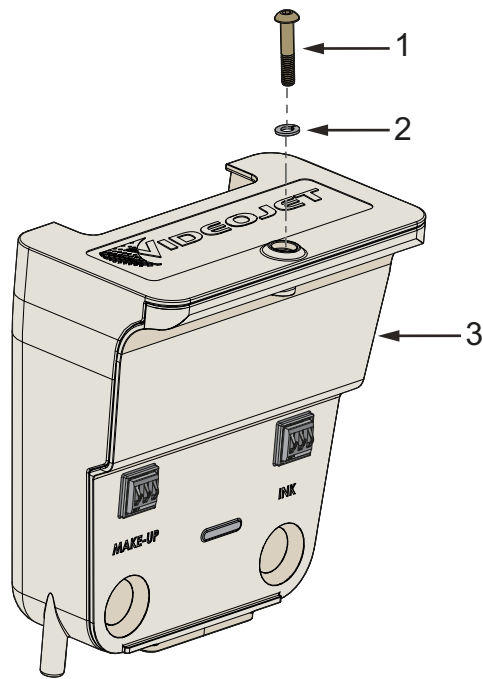


Figure 9: Solvent Control Module Assembly

Item	Part Number	Descriptions	Quantity	Sub-assembly
C		Ink Compartment		
C1	613598	Solvent Control Module Assembly		
1		Socket Head Screw	1	
2		Spring Washer	1	
3		Solvent Control Module	1	
4*		O-Rings	3	
5*	611407	Solvent Valve	1	
6*	611408	Ink Add. Valve	1	
7*	611409	Solvent Pump	1	

Table 10: Solvent Control Module Assembly

* Item not shown in Figure

C2

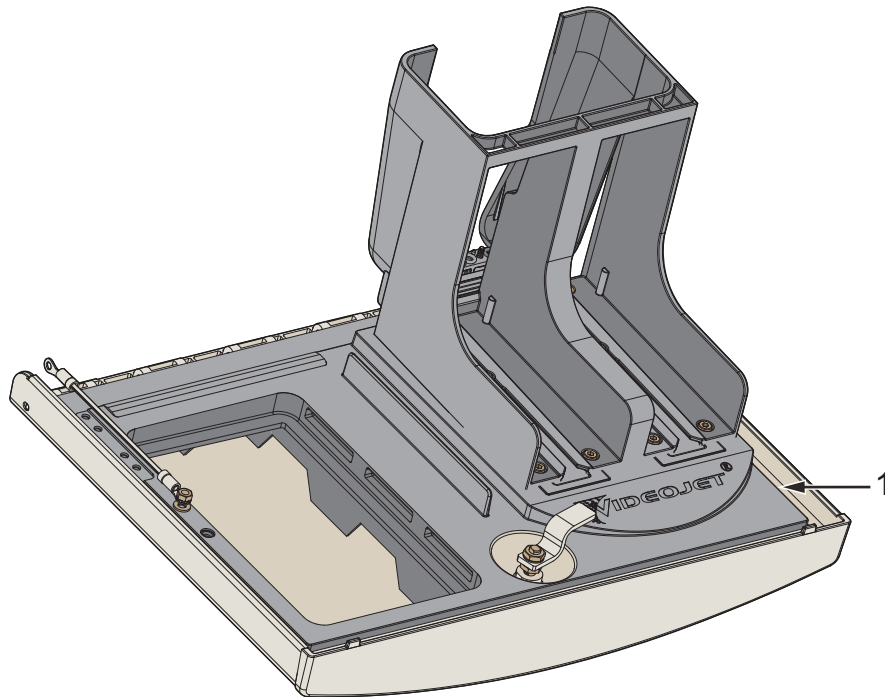


Figure 10: Ink Door Assembly

Item	Part Number	Descriptions	Quantity	Sub-assembly
C		Ink Compartment		
C2	613596	Ink System Door Assembly		
1		Ink System Door	1	
2*		Hinge Pin	1	
3*		Cap-head Screw	6	
4*		Air Filter	1	
5*		Air Filter Lid	1	

Table 11: Ink Door Assembly

* Item not shown in Figure

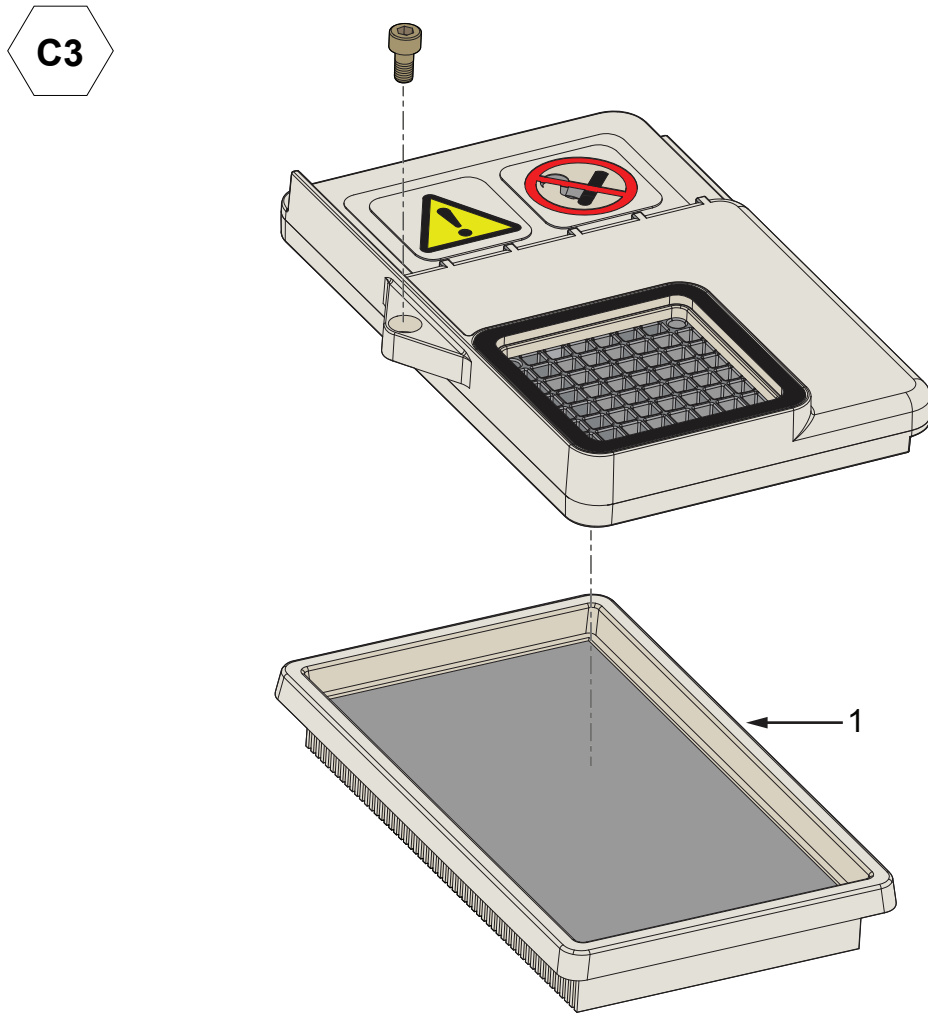


Figure 11: Air Filter Assembly

Item	Part Number	Descriptions	Quantity	Sub-assembly
C		Ink Compartment		
C3		Air Filter Assembly		
1	611221	Air Filter	5	

Table 12: Air Filter Assembly

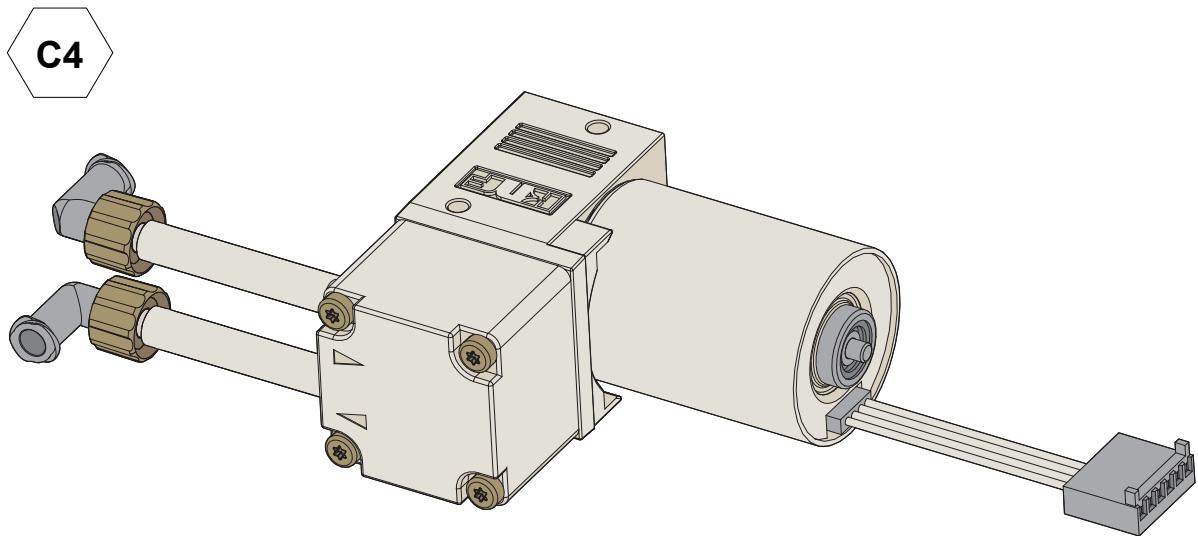


Figure 12: Gutter Pump Assembly

Item	Part Number	Descriptions	Quantity	Sub-assembly
C		Ink Compartment		
C4	613617	Gutter Pump Assembly		
1		Gutter Pump	1	
2*		Socket-head Cap Screw	2	
3*		Nylon Washer	2	
4*		Nyloc Nut	2	

Table 13: Gutter Pump Assembly

* Item not shown in Figure

C5

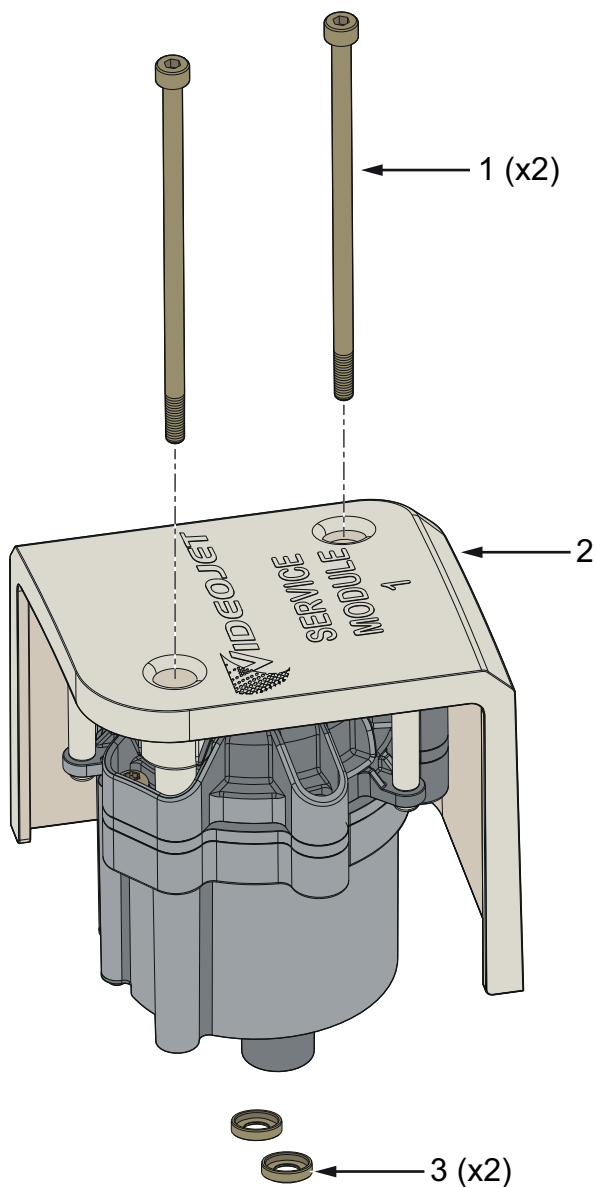


Figure 13: Service Module 1 Assembly

Item	Part Number	Descriptions	Quantity	Sub-assembly
C		Ink Compartment		
C5	613597	Service Module 1 Assembly		
1		Cap-head Screw	2	
2		Service Module 1	1	
3		O-Ring	2	

Table 14: Service Module 1 Assembly

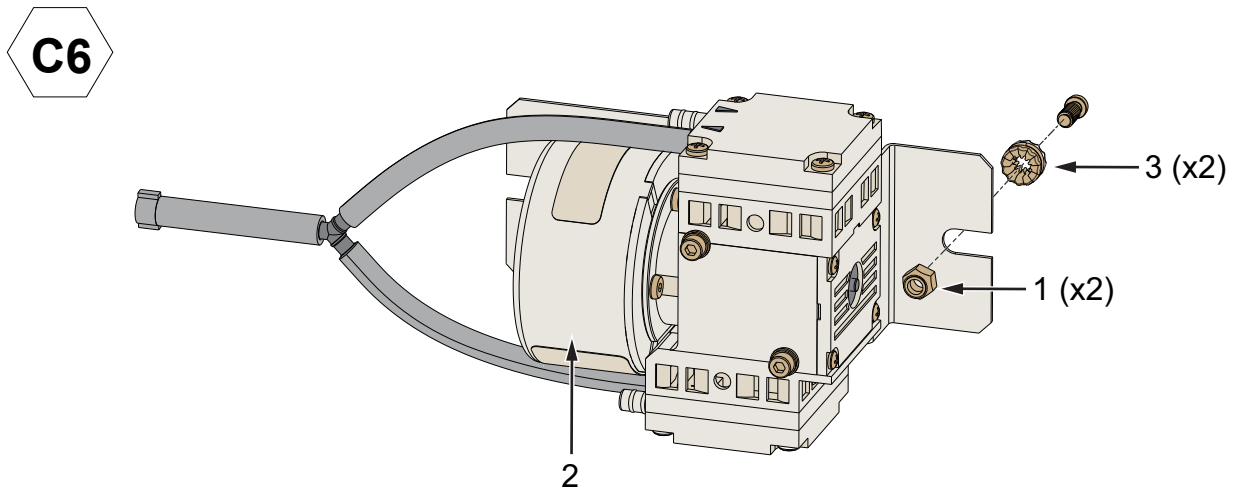


Figure 14: Positive Air Pump Assembly

Item	Part Number	Descriptions	Quantity	Sub-assembly
C		Ink Compartment		
C6	611396	Positive Air Pump Assembly		
1		Nut	2	
2		Pump Assembly with Bracket	1	
3		Anti-vibration mount	2	
4*		Washer	2	

Table 15: Positive Air Pump Assembly

* Item not shown in Figure

C7

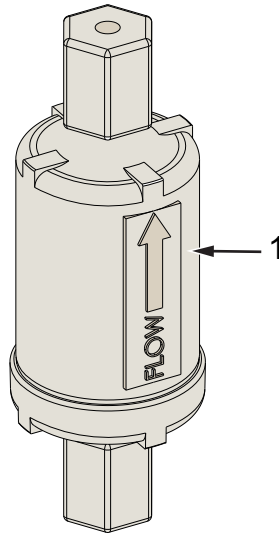


Figure 15: Flush Filter

Item	Part Number	Descriptions	Quantity	Sub-assembly
C		Ink Compartment		
C7	611167	Flush Filter		
1		Filter	1	

Table 16: Flush Filter

C8

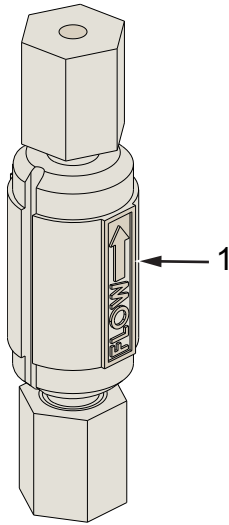


Figure 16: Inline Filter

Item	Part Number	Descriptions	Quantity	Sub-assembly
C		Ink Compartment		
C8	239415	Inline Filter		
1		Filter	1	

Table 17: Inline Filter

C9

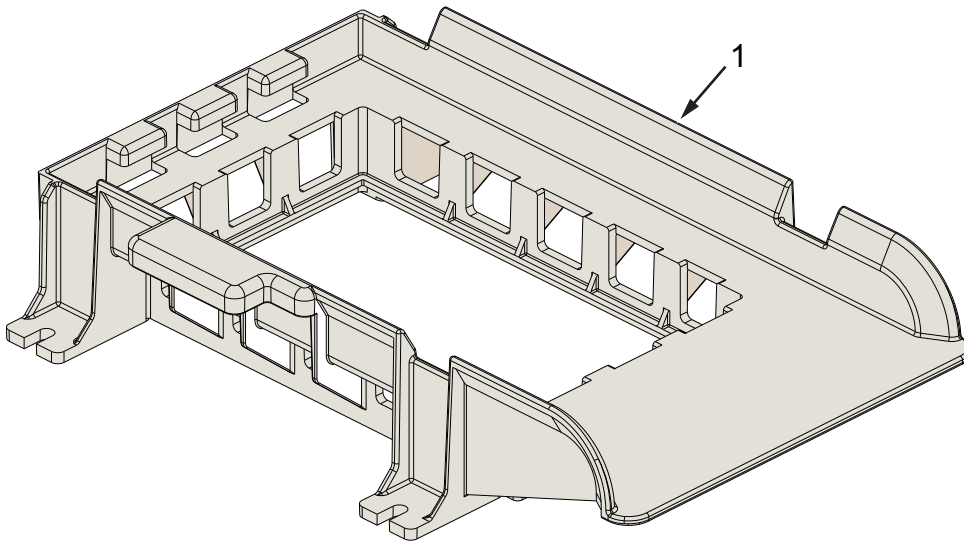


Figure 17: Fluid Support Assembly

Item	Part Number	Descriptions	Quantity	Sub-assembly
C		Ink Compartment		
C9	611423	Fluid Support Assembly		
1		Support Tray	1	
2*		Flanged Nut	2	
3*		Nut	1	
4*		Washer	1	
5*		Silicon Tubing	0.025m	
6*		Cable Ty-rap	1	

Table 18: Fluid Support Assembly

* Item not shown in Figure

D

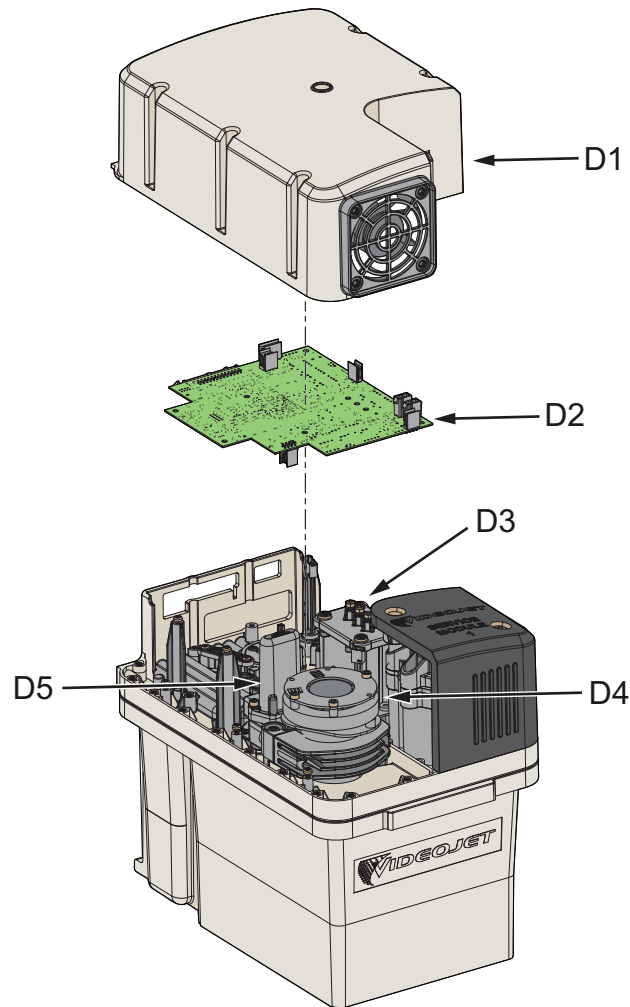


Figure 18: Ink System

Item	Part Number	Descriptions	Quantity	Sub-assembly
D	613593	Ink System		
D1	611153	Ink System Cover (Including Fan)		Refer to Table 20
D2	613599	Ink Management Board		Refer to Table 21
D3	611152	VMS Chamber With Temperature Sensor		Refer to Table 22
D4	611246	Ink Pump Assembly		Refer to Table 23
D5	611149	Pre-Venturi Filter Assembly		Refer to Table 24
D6*	613636	VMS Valve Assembly		Refer to Table 25

Table 19: Ink System

* Item not shown in Figure

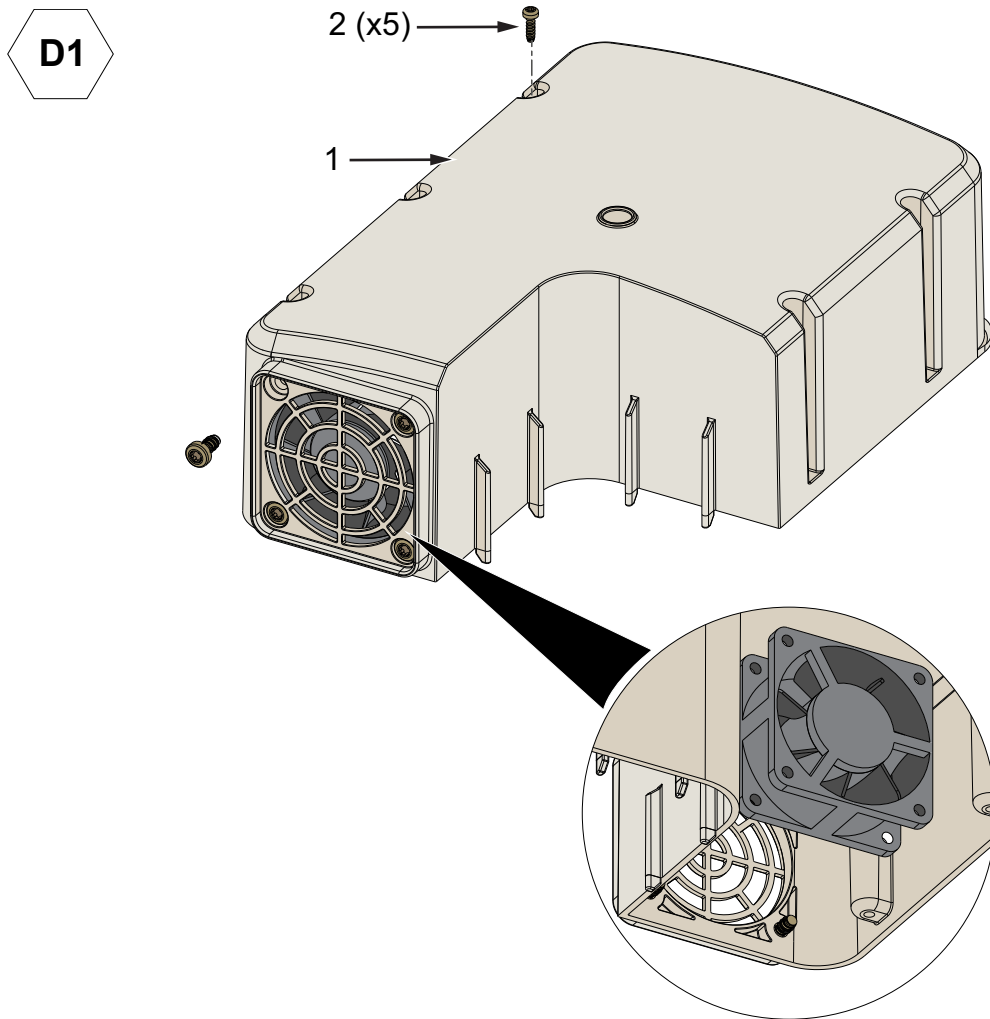


Figure 19: Ink System Cover with Fan Assembly

Item	Part Number	Descriptions	Quantity	Sub-assembly
D		Ink System		
D1	611153	Ink System Cover with Fan Assembly		
1		Ink System Cover with Fan	1	
2		Delta PT Screw	5	

Table 20: Ink System Cover with Fan Assembly

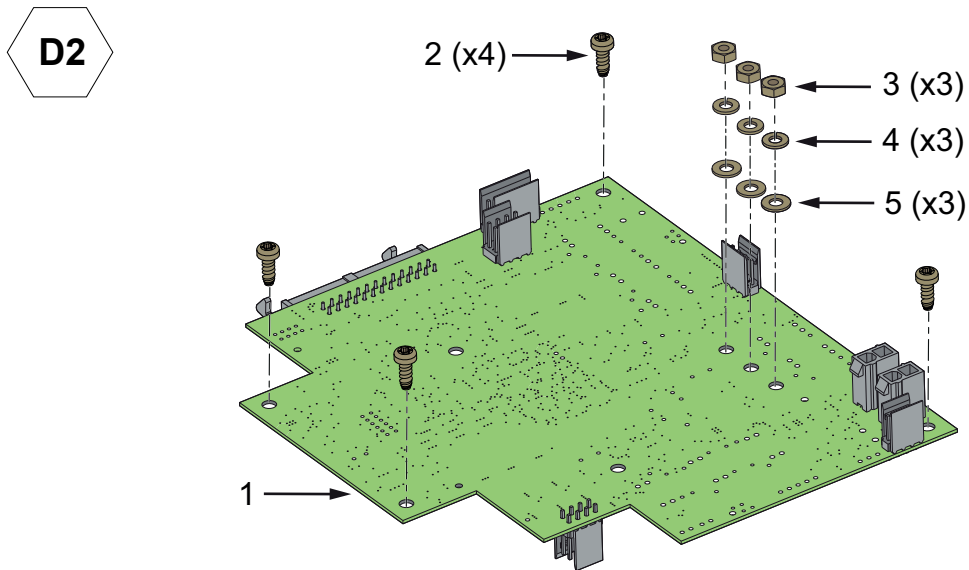


Figure 20: Ink Management Board Assembly

Item	Part Number	Descriptions	Quantity	Sub-assembly
D		Ink System		
D2	613599	Ink Management Board Assembly		
1		Ink Management Board	1	
2		Delta PT Screw	4	
3		Nut	3	
4		Spring Washer	3	
5		Washer	3	

Table 21: Ink Management Board Assembly

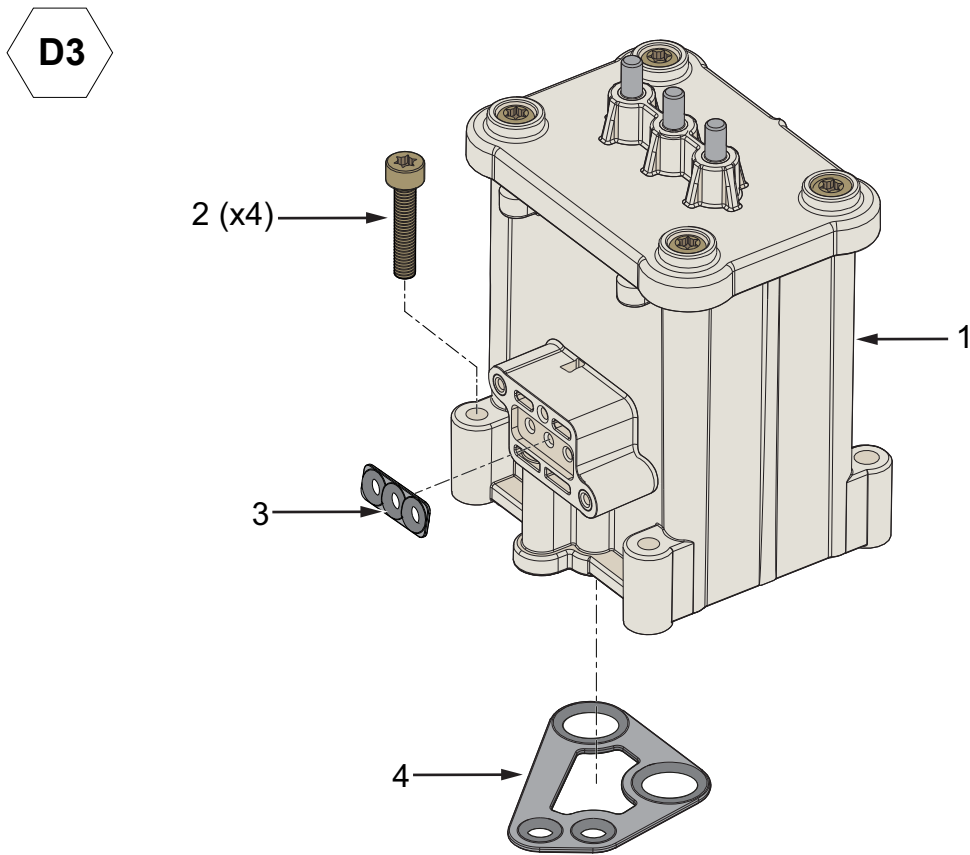


Figure 21: VMS Assembly

Item	Part Number	Descriptions	Quantity	Sub-assembly
D		Ink System		
D3	611152	VMS Assembly		
1		VMS Chamber With Temperature Sensor	1	
2		Cap-head Torx Screw	4	
3		3 Way Gasket	1	
4		VMS Top Plate Gasket	1	

Table 22: VMS Assembly

D4

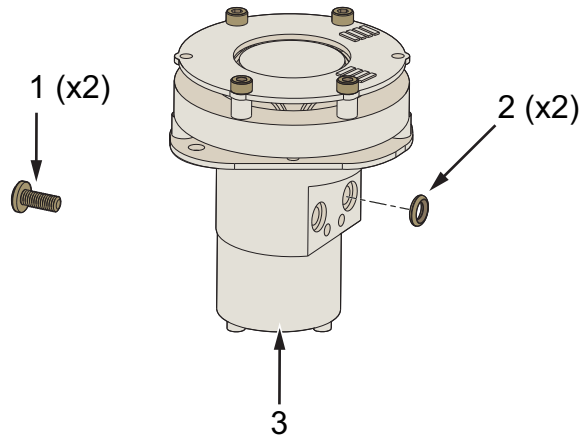


Figure 22: Ink Pump Assembly

Item	Part Number	Descriptions	Quantity	Sub-assembly
D		Ink System		
D4	611246	Ink Pump Assembly		
1		Torx Pan Head Screw	2	
2		O-Ring	2	
3		Pump	1	

Table 23: Ink Pump Assembly

Illustrated Parts List

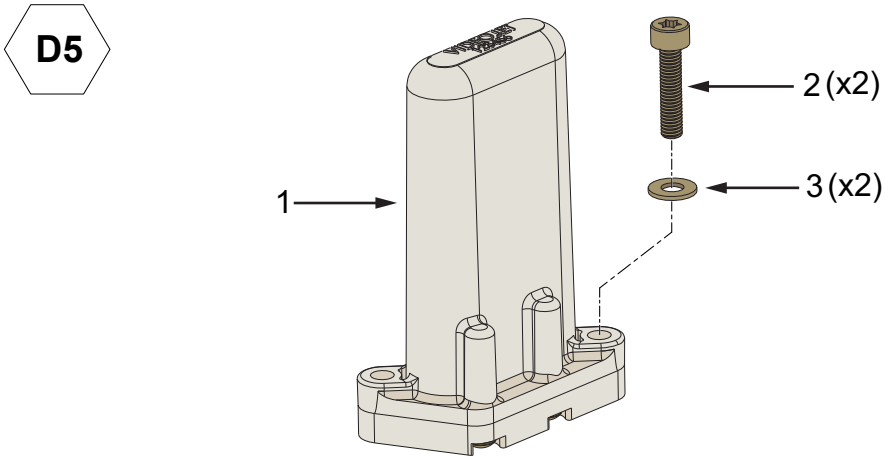


Figure 23: Pre-Venturi Filter

Item	Part Number	Descriptions	Quantity	Sub-assembly
D		Ink System		
D5	611149	Pre-Venturi Filter Assembly		
1		Pre-Venturi Filter	1	
2		Screw	2	
3		Washer	2	

Table 24: Pre-Venturi Filter

D6

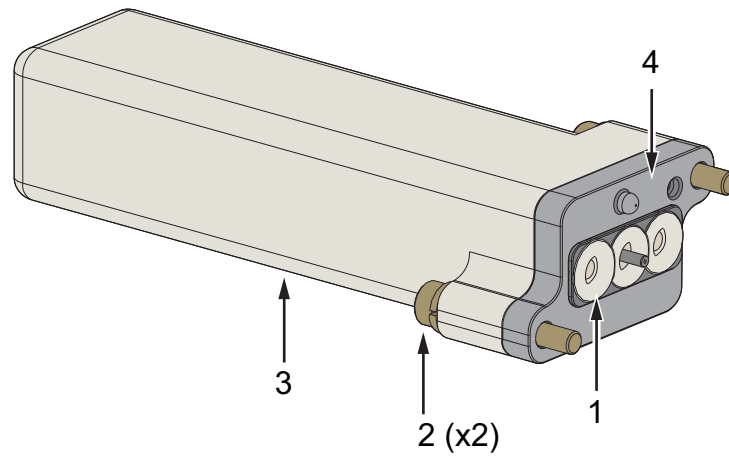


Figure 24: VMS Valve Assembly

Item	Part Number	Descriptions	Quantity	Sub-assembly
D		Ink System		
D6	613636	VMS Valve Assembly		
1		3 Way Gasket	1	
2		Cap-head Screw	2	
3		Valve	1	
4		Block Assembly	1	
5*		Spring Washer	2	

Table 25: VMS Valve Assembly

* Item not shown in Figure

E

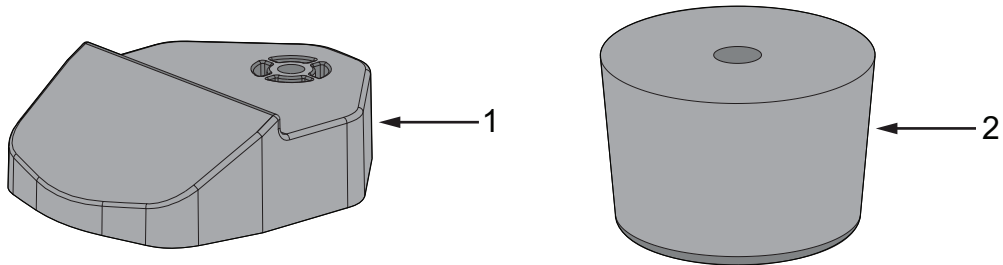


Figure 25: Cabinet Foot

Item	Part Number	Descriptions	Quantity	Sub-assembly
E	613618	Cabinet - Feet		
1		Cabinet Feet - Front	2	
2		Cabinet Feet - Back	2	
3*		Socket-head Cap Screw	4	
4*		Plain Washer	4	

Table 26: Cabinet Foot

* Item not shown in Figure

F

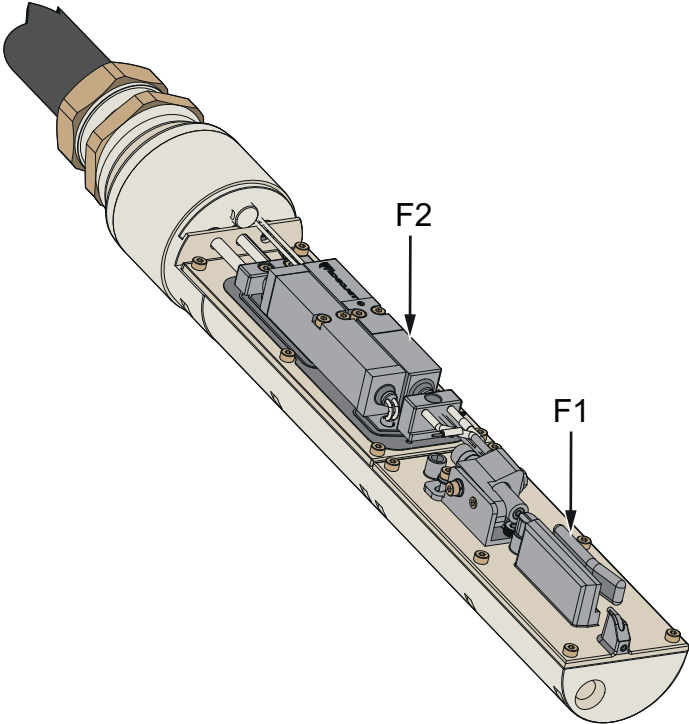


Figure 26: Printhead

F

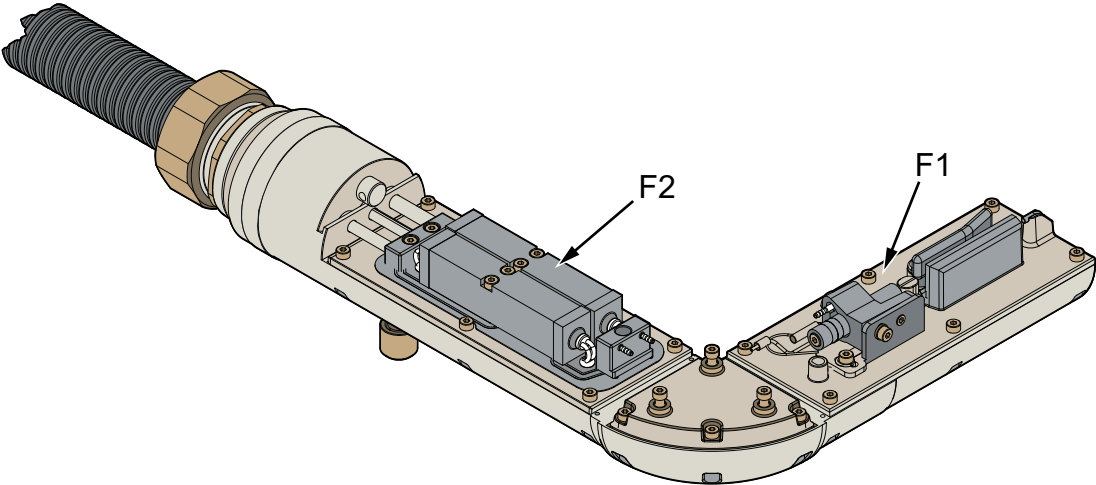


Figure 27: 90 Degree Printhead

Illustrated Parts List

Item	Part Number	Descriptions	Quantity	Sub-assembly
F		Printhead		
		90 Degree Printhead		
F1	399422 (60 micron) 399180 (70 micron)	Print Module Assembly		Refer to Table 28
	399621 (60 micron) 399622 (70 micron)	90 Degree Print Module Assembly		Refer to Table 29
F2	399181	Valve Module Assembly		Refer to Table 30
F3*		Printhead Covers		Refer to Table 31
F4*		Printhead and Umbilical		Refer to Table 32
		90 Degree Printhead and Umbilical		Refer to Table 33

Table 27: Printhead

* Item not shown in Figure

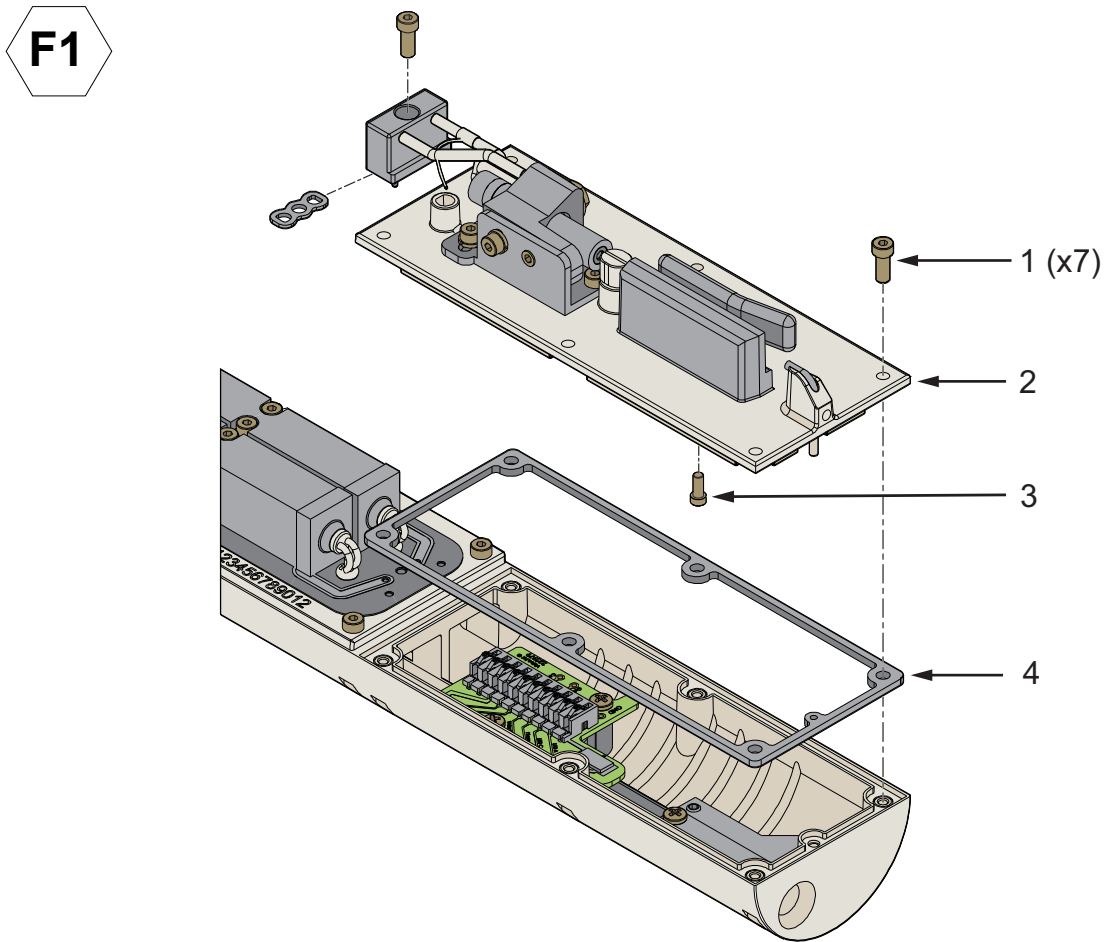


Figure 28: Print Module Assembly

Item	Part Number	Descriptions	Quantity	Sub-assembly
F		Printhead		
F1	399422 (60 micron) 399180 (70 micron)	Print Module Assembly		
1		Cap-head Screw	7	
2		Print Module Deck Assembly	1	
3		Captive Screw	1	
4		Print Module Gasket	1	

Table 28: Print Module Assembly

F1

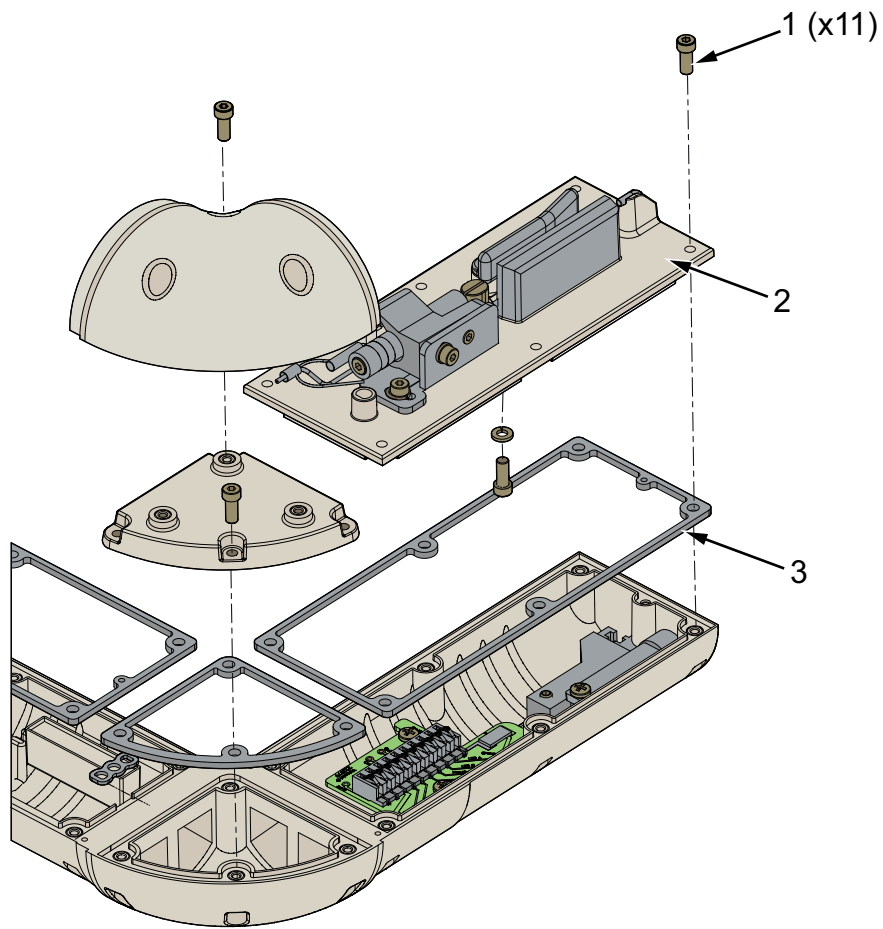


Figure 29: 90 Degree Print Module Assembly

Item	Part Number	Descriptions	Quantity	Sub-assembly
F		90 Degree Printhead		
F1	SP399621 (60 micron) SP399622 (70 micron)	90 Degree Print Module Assembly		
1		Cap-head Screw	11	
2		Print Module Deck Assembly	1	
3		Print Module Gasket	1	

Table 29: 90 Degree Print Module Assembly

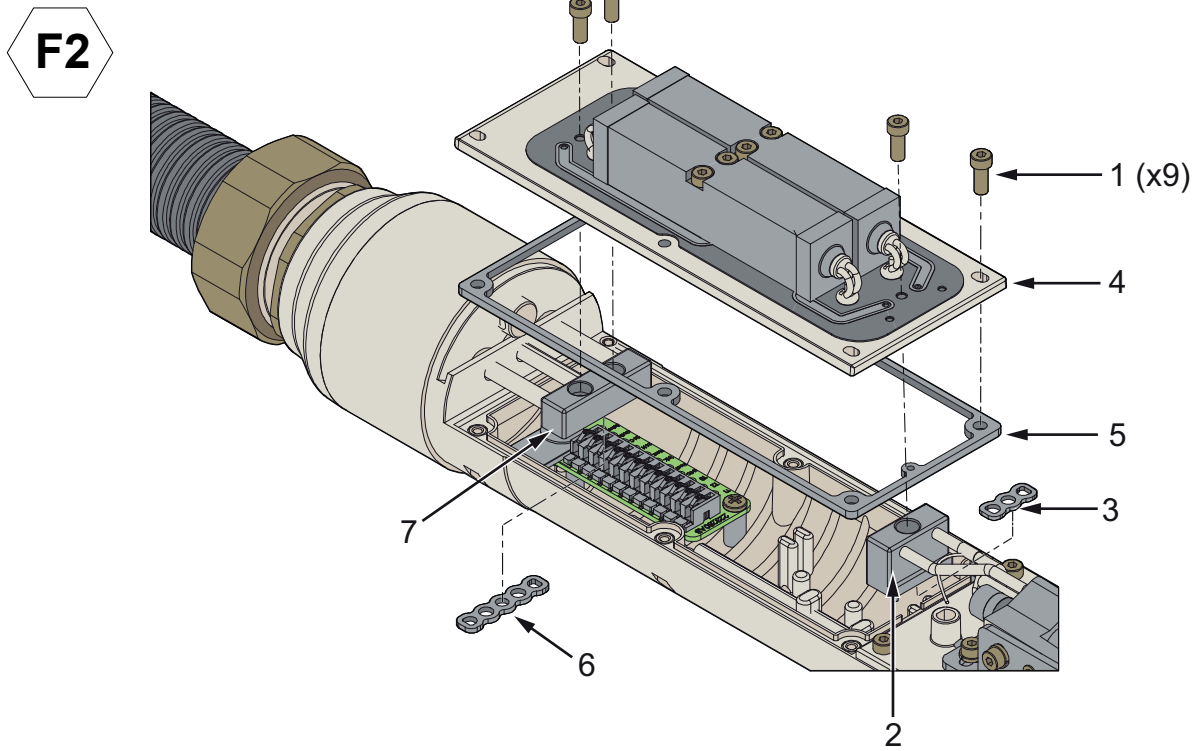


Figure 30: Valve Module Assembly

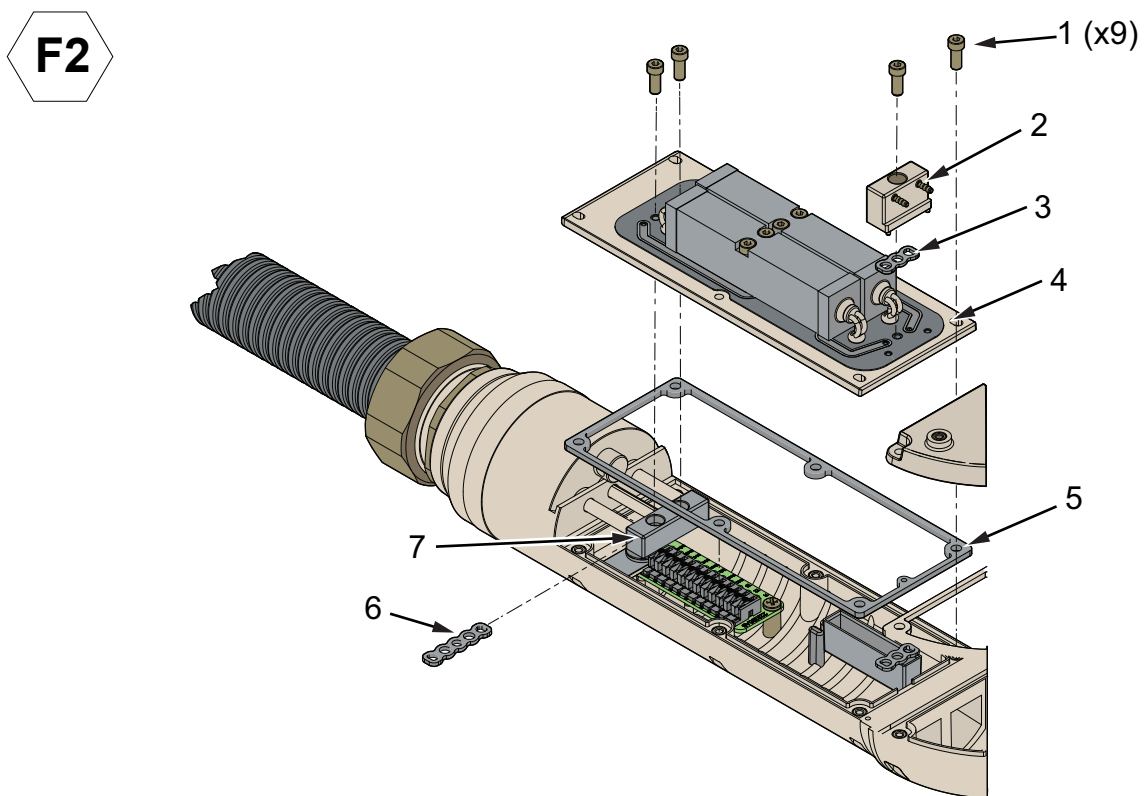


Figure 31: 90 Degree Printhead Valve Module Assembly

Illustrated Parts List

Item	Part Number	Descriptions	Quantity	Sub-assembly
F		Printhead		
		90 Degree Printhead		
F2	399181	Valve Module Assembly		
1		Cap-head Screw	9	
2		2 Way Manifold	1	
3		2 Way Manifold Gasket	1	
4		Printhead Valve Module Deck Assembly	1	
5		Printhead Valve Module Gasket	1	
6		3 Way Manifold Gasket	1	
7		3 Way Manifold	1	
8*		Printhead Cover Grounding Bracket	1	

Table 30: Valve Module Assembly

* Item not shown in Figure

F3

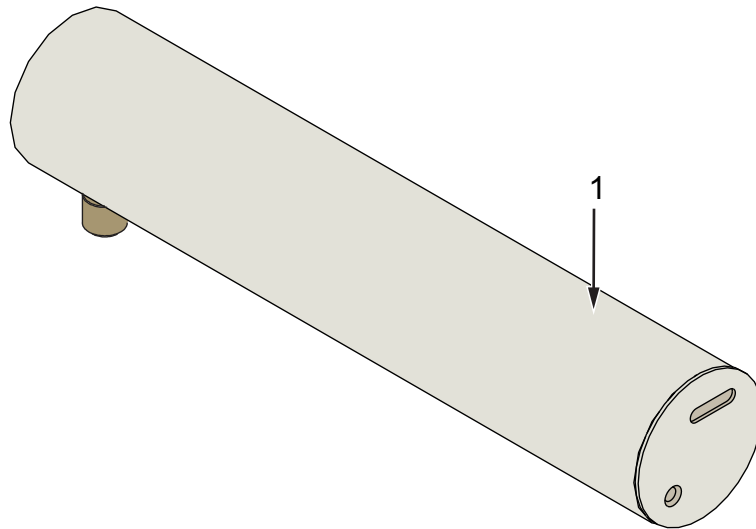


Figure 32: Printhead Cover Assembly - Standard

F3

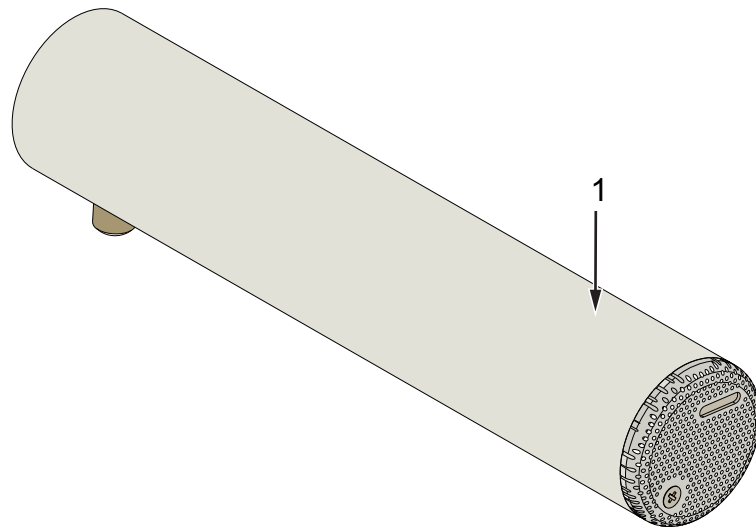


Figure 33: Printhead Cover Assembly - Perforated

Item	Part Number	Descriptions	Quantity	Sub-assembly
F		Printhead		
		90 Degree Printhead		
F3		Printhead Cover		
1	399182	Printhead Cover Assembly-Standard	1	
1	611410	Printhead Cover Assembly-Perforated	1	

Table 31: Printhead Covers

Illustrated Parts List

Item	Part Number	Descriptions	Quantity	Sub-assembly
F		Printhead		
F4		Printhead and Umbilical		
	613589	Printhead and Umbilical Complete (3 m) 60 micron	1	
	613590	Printhead and Umbilical Complete (6 m) 60 micron	1	
	613591	Printhead and Umbilical Complete (3 m) 70 micron	1	
	613592	Printhead and Umbilical Complete (6 m) 70 micron	1	
	611399	Printhead and Umbilical, Perforated Cover (3 m) 60 micron	1	
	611401	Printhead and Umbilical, Perforated Cover (6 m) 60 micron	1	
	611400	Printhead and Umbilical, Perforated Cover (3 m) 70 micron	1	
	611402	Printhead and Umbilical, Perforated Cover (6 m) 70 micron	1	
	613587	Chassis and Umbilical (3 m)	1	
	613588	Chassis and Umbilical (6 m)	1	

Table 32: Printhead and Umbilical

Item	Part Number	Descriptions	Quantity	Sub-assembly
F		90 Degree Printhead		
F4		90 Degree Printhead and Umbilical		
	611426	90 Degree Printhead and Umbilical Complete (3 m) 60 micron	1	
	611427	90 Degree Printhead and Umbilical Complete (6 m) 60 micron	1	
	611424	90 Degree Printhead and Umbilical Complete (3 m) 70 micron	1	
	611425	90 Degree Printhead and Umbilical Complete (6 m) 70 micron	1	
	611428	90 Degree Printhead and Umbilical, Perforated Cover (3 m) 60 micron	1	
	611430	90 Degree Printhead and Umbilical, Perforated Cover (6 m) 60 micron	1	
	611429	90 Degree Printhead and Umbilical, Perforated Cover (3 m) 70 micron	1	
	611431	90 Degree Printhead and Umbilical, Perforated Cover (6 m) 70 micron	1	
	611432	90 Degree Printhead Chassis and Umbilical (3 m)	1	
	611433	90 Degree Printhead Chassis and Umbilical (6 m)	1	

Table 33: 90 Degree Printhead and Umbilical

Illustrated Parts List

2.2.1 Cables

Part Number	Descriptions	Quantity
613585	IMB Cables	
	IMB to SMA Cable Assembly	1
	MCB to IMB Cable Assembly	1
613584	Display Cables	
	EHT to MCB	1
	FIB to MCB Cable	1
613586	Power Supply/Switch Cables	
	PSU to MCB Cable Assembly	1
	Main Switch to PSU Cable Assembly	1
383575	USB to RS232 Converter Cable	
	USB to RS232 Converter Cable Assembly (1.8m)	1
	Screw Adapter	1

Table 34: Cables

2.2.2 Power Cord

Part Number	Descriptions
613600	Mains Cable, Type B
613601	Mains Cable, Type J
613602	Mains Cable, Type K
613603	Mains Cable, Type L
613604	Mains Cable, Type G
613605	Mains Cable, Type I
613606	Mains Cable, Type CEE 7/7
613607	Mains Cable, Type D
613608	Mains Cable, Type NEMA 5-15P
613609	Mains Cable, Type M
613610	Mains Cable, Type N
613611	Mains Cable, Type H
613612	Mains Cable, Type CEE 7/7 - Norwegian
613613	Mains Cable, Type CEE 7/7 - Finnish
613614	Mains Cable, Type CEE 7/7- Swedish

Table 35: Power Cord

2.3 Optional Accessories

2.3.1 Beacon Assembly

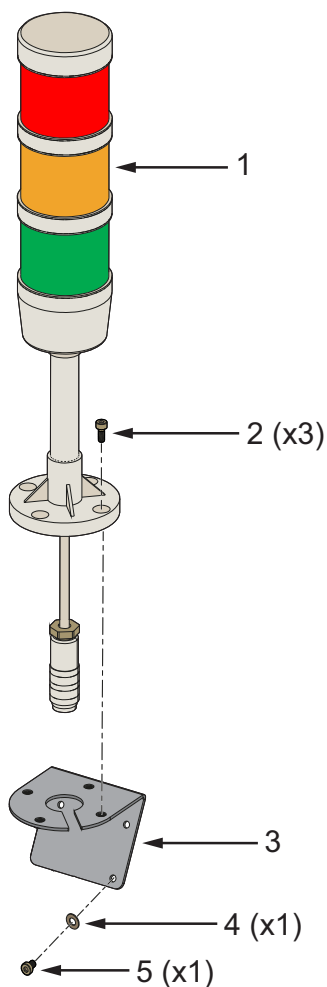


Figure 34: Beacon Assembly

Item	Part Number	Descriptions	Quantity
	613583	Beacon Assembly	
1		Three Tier Beacon	1
2		Button-head Screw	3
3		Beacon Mounting Bracket	1
4		Spring Washer	1
5		Button-head Screw	1
6*		Plain Washer	3
	399279	Extension Cable, 6m	1

Table 36: Beacon Assembly

* Item not shown in Figure

2.3.2 Air Dryer Assembly

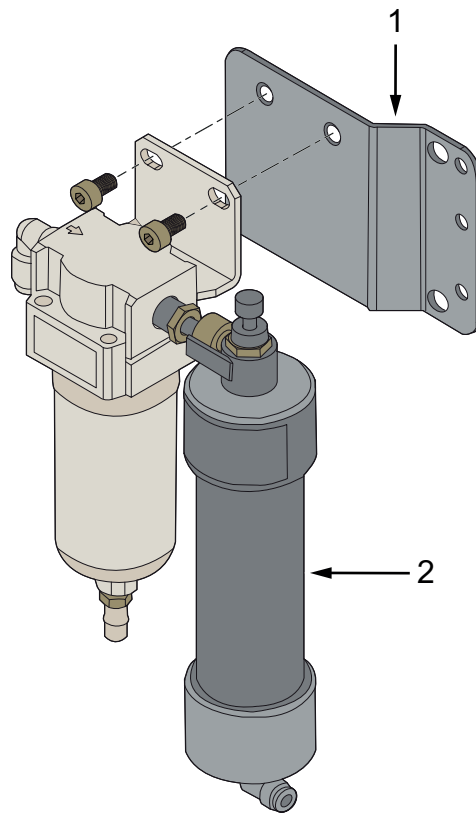


Figure 35: Air Dryer Assembly

Item	Part Number	Descriptions	Quantity
	611383	Universal Dry Air Assembly	
1		Air Dryer Mounting Bracket	1
2		Air Dryer	1
3*		Rubber Drain Tube	As required
4*		Tubing	As required
5*		Fixtures and Fittings	As required

Table 37: Air Dryer Assembly

* Item not shown in Figure

2.3.3 Wash Station

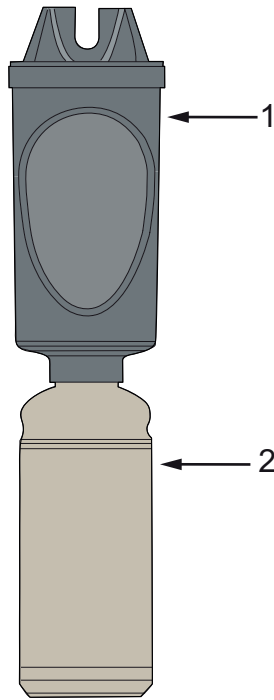


Figure 36: Wash Station

Item	Part Number	Descriptions	Quantity
1	399085	Wash Station Assembly	1
2	301-0007-005	Empty 1 Liter Bottle	1
3*	202047/39243 1	250ml Wash Bottle	1

Table 38: Wash Station

* Item not shown in Figure

2.3.4 Universal Stand

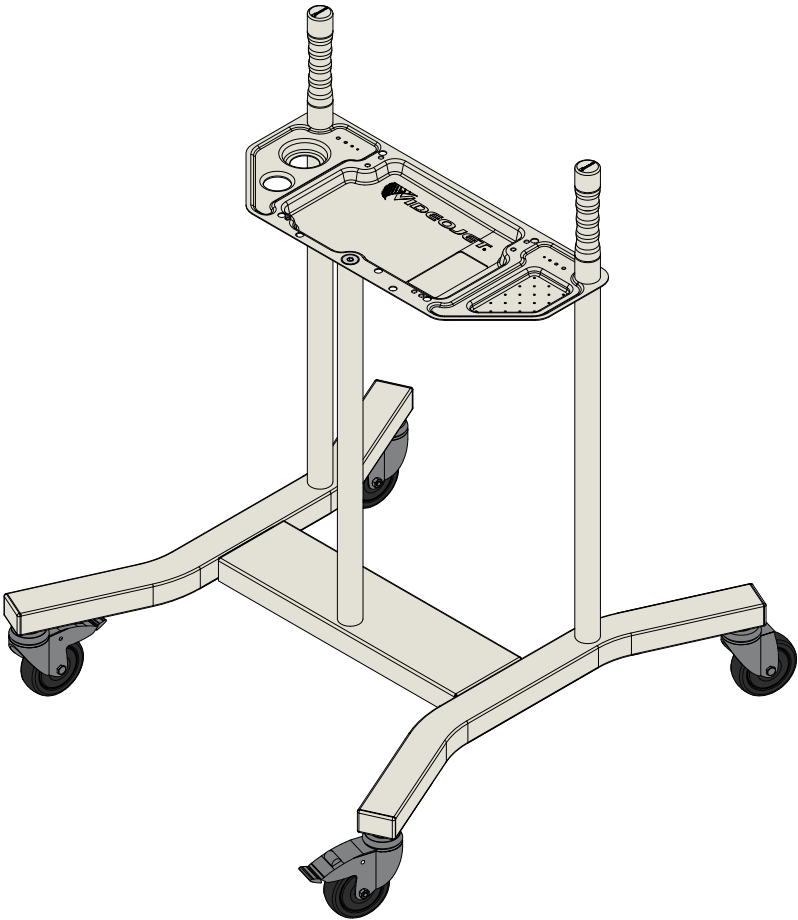


Figure 37: Universal Stand

Item	Part Number	Descriptions	Quantity
	393400	Universal Stand	
1*	392745	Printer Stand Handle	1
2*	392746	Umbilical Bracket	1

Table 39: Universal Stand

* Item not shown in Figure

2.3.5 Printhead Stand

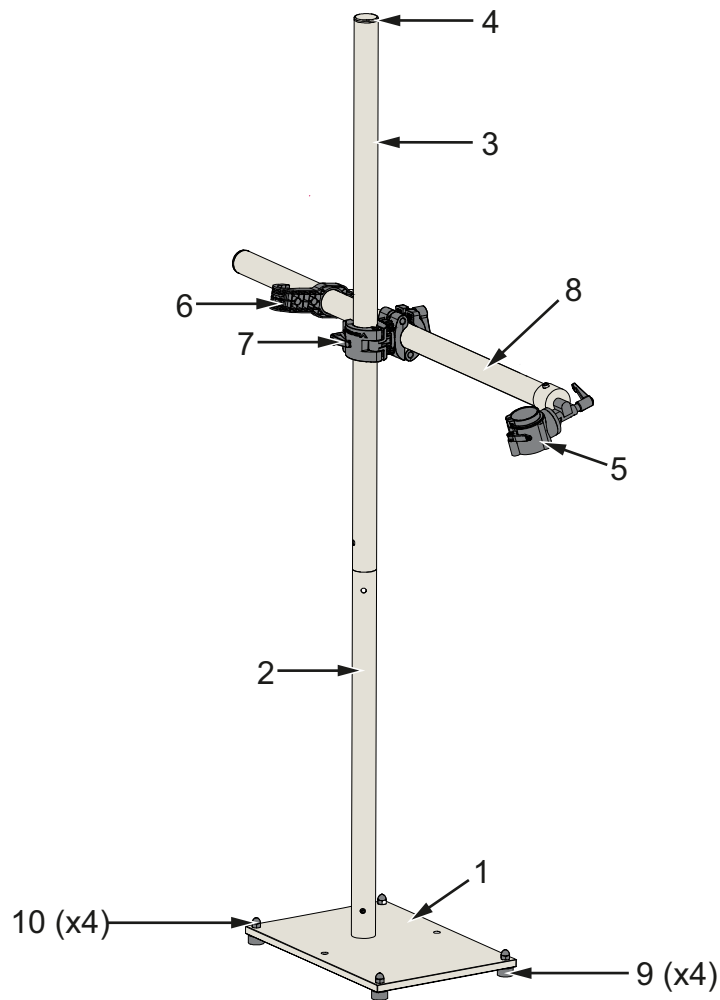


Figure 38: Printhead Stand

Item	Part Number	Descriptions	Quantity
	393435	Printhead Stand Assembly, Videojet (696)	
1		Stand Base Plate Assembly	1
2		600mm Base Vertical Tube	1
3		900mm Long Tube	1
4		Stand Tube Plug	2
5		PH Mount Assembly	1
6		Umbilical Clamp	1
7		Cross Clamp Assembly	1
8		600mm Long Tube	1
9		Adjustable Foot	4
10		Nut	4

Table 40: Printhead Stand

Item	Part Number	Descriptions	Quantity
	393433	Printhead Stand Assembly, Videojet (996)	
1		Stand Base Plate Assembly	1
2		600mm Base Vertical Tube	1
3		900mm Long Tube	1
4		Stand Tube Plug	2
5		PH Mount Assembly	1
6		Umbilical Clamp	1
7		Cross Clamp Assembly	1
8		900mm Long Tube	1
9		Adjustable Foot	4
10		Nut	4

Table 40: Printhead Stand (continued)

Part Number	Descriptions	Quantity
395632	Offsetable Double Head Bracket	1
395709	Adjustable Alignment Dual Printhead Bracket Assembly	1
SP393445	Printhead Clamp Assembly	1
SP393442	900mm Extension Tube and 600mm Extension Tube	1
SP393439	Cross Clamp Assembly	1
SP393446	Umbilical Cord Clamp	1
SP393448	Stand Rubber Foot	1
399093	Anti-vibration Kit	1
399068	Auto Align Printhead Holder	1

Table 41: Printhead Stand - Additional Kits

2.3.6 Printer Wall Mount

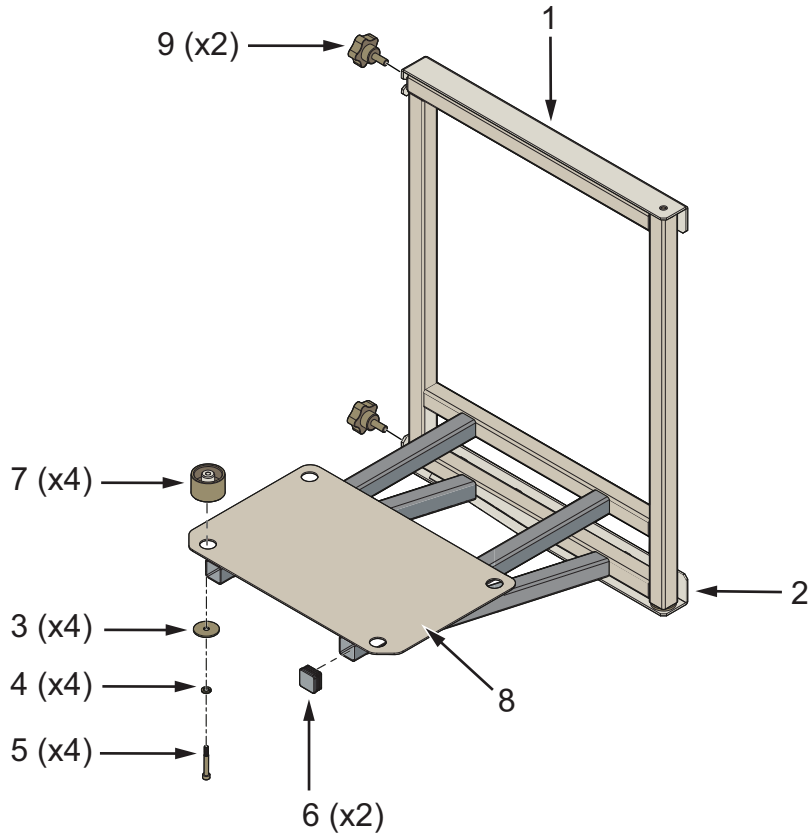


Figure 39: Printer Wall Mount

Item	Part Number	Descriptions	Quantity
	611271	Printer Wall Mount Stand Assembly	
1		Angle Support Top Assembly	1
2		Angle Support Bottom Assembly	1
3		Stand Foot Clamp Washer	4
4		Spring Lock Washer	4
5		Socket- head Screw	4
6		Box Section End Cap	2
7		Wall Foot	4
8		Wall Bracket	1
9		Knob	2

Table 42: Printer Wall Mount

* Item not shown in Figure

2.3.7 Power Conditioner

Item	Part Number	Descriptions	Quantity
	356841-02	110 V Power Conditioner	1

Table 43: Power Conditioner

2.4 Miscellaneous Accessories

Part Number	Descriptions
613616	Gasket Kit

Table 44: Accessories

2.4.1 Printhead Holder

Part Number	Descriptions
399278	Printhead Mount Photocell Holder, 18mm
399294	Printhead Photocell Holder, 18mm

Table 45: Printhead Holder

2.4.2 Product Detectors

Part Number	Descriptions
234211	Detector Ez-pro Proximity Fiber
234212	Detector Ez-pro Through Beam Fiber
234215	Detector Retro Smart (Clear Materials)
234213	Detector Label Eye (Web Printing)
234214	Detector Mark Eye (Web Registration Mark)

Table 46: Product Detectors

Illustrated Parts List

2.4.3 DIN Plugs

Part Number	Descriptions
500-0036-578	3 Way DIN Plug (Photo Cell)
500-0036-581	4 Way DIN Plug (Shaft Encoder)
500-0036-582	5 Way DIN Plug (Serial For RS-232)
500-0036-577	6 Way DIN Plug (Alert Beacon)
500-0036-583	7 Way DIN Plug (Relays)
SP378810	7 Way DIN Plug With 20 Ft. Cable (For Relays)
500-0036-584	8 Way DIN Plug (Message Select A/B)
500-0076-141	DIN Plug Dust Cap

Table 47: DIN Plugs

2.4.4 Encoders

2.4.4.1 Encoders Only

Part Number	Descriptions
41000255	2500 PPR
377530	3600 PPR (use with 12 inch wheel 21000217)*
41000256	5000 PPR

Table 48: Encoders Only

2.4.4.2 Encoder Kits

Part Number	Descriptions
SP378815	1800 PPR kit (encoder, 25ft cable)
40331750	2500 PPR kit (encoder, mounting bracket, wheel)
SP378821	3600 PPR kit (encoder, 25ft cable)
378191	5000 PPR kit (encoder, mounting bracket, wheel)

Table 49: Encoder Kits

2.4.4.3 Encoder Accessories

Part Number	Descriptions
21000217	12 inch Circular Wheel
377529	12 inch Circular Wheel (with replaceable ring)
377523	Replaceable ring for part 377529
378192	3 m Shaft Cable
378193	6 m Shaft Cable
21000433	Spring Bracket Standard
377519	Spring Bracket Lateral Adjustment
378985	Encoder Adapter Cable (Excel to 1580)
377522	Encoder Amplifier

Table 50: Encoder Accessories

2.4.5 Connectivity

Part Number	Descriptions
399062	Extension Cables 6 m RS232
SP223213	External Ethernet Connector Cable 5 m
383575	USB Serial Cable
80200258	RS232 to 5 Pin DIN (3 m)

Table 51: Connectivity

2.5 Tools Kit

Part Number	Descriptions
TL399250	Service Tool Kit, Videojet 1000 Line
611248	Service Tool Kit, Additional

Table 52: Tools Kit

Part Number	Descriptions
613546	Tool, Valve Solder Spacer, SCM PCB

Table 53: Tools for Spares 611407 and 611408

2.5.1 The Service Tool Kit (611248)

There are several tools in the tool kit for normal maintenance of printer.

[Table 54](#) lists the tool kit items and their part numbers.

Part Number	Descriptions
239534	Torx Screwdriver T6
239535	Hex Screwdriver 1.5mm
239540	Hex Screwdriver 1.27mm
239541	Nut Driver 4mm x 6125
239542	Nut Driver 3mm x 6125
239548	Hex Bit 2.5mm, 0.25 Socket Drive
239549	Hex Bit 3mm, 0.25 Socket Drive
239550	Socket 7mm, 6pt 0.25 Socket Drive
239552	Socket Driver, 0.25 Flex Mag Shaft
5260001118	Nut Driver 5.5mm
234710	Tool Bag
613414	Flexible Driver Ext
613412	M35 Blind Plug Tool
234644	3mm Hex Driver
234657	DIN Wrench

Table 54: Tool Kit Parts List