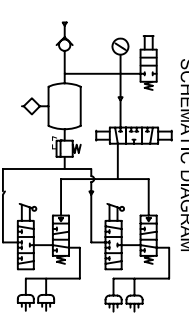
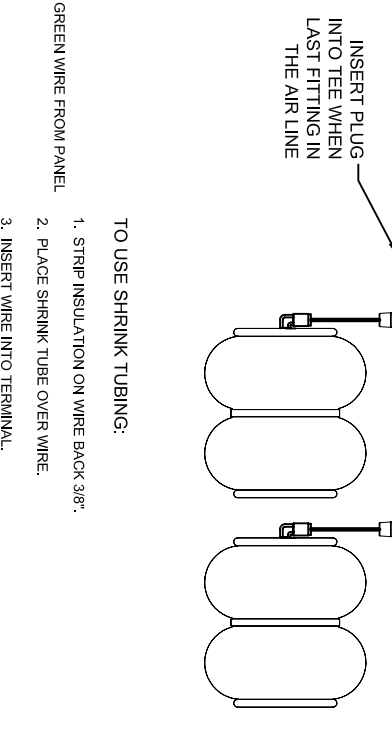
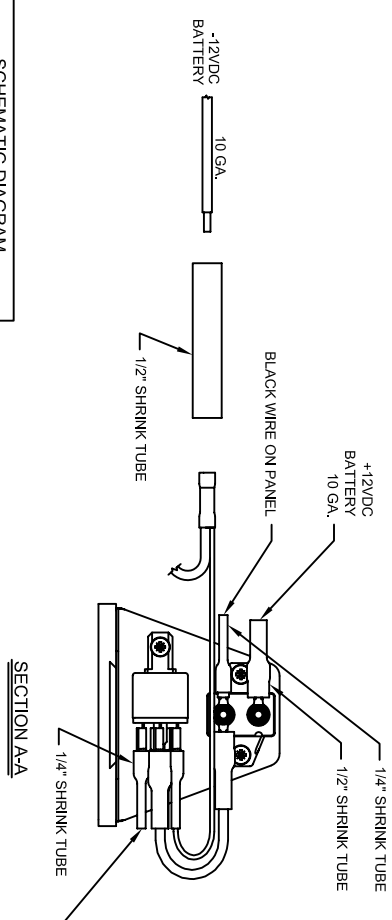
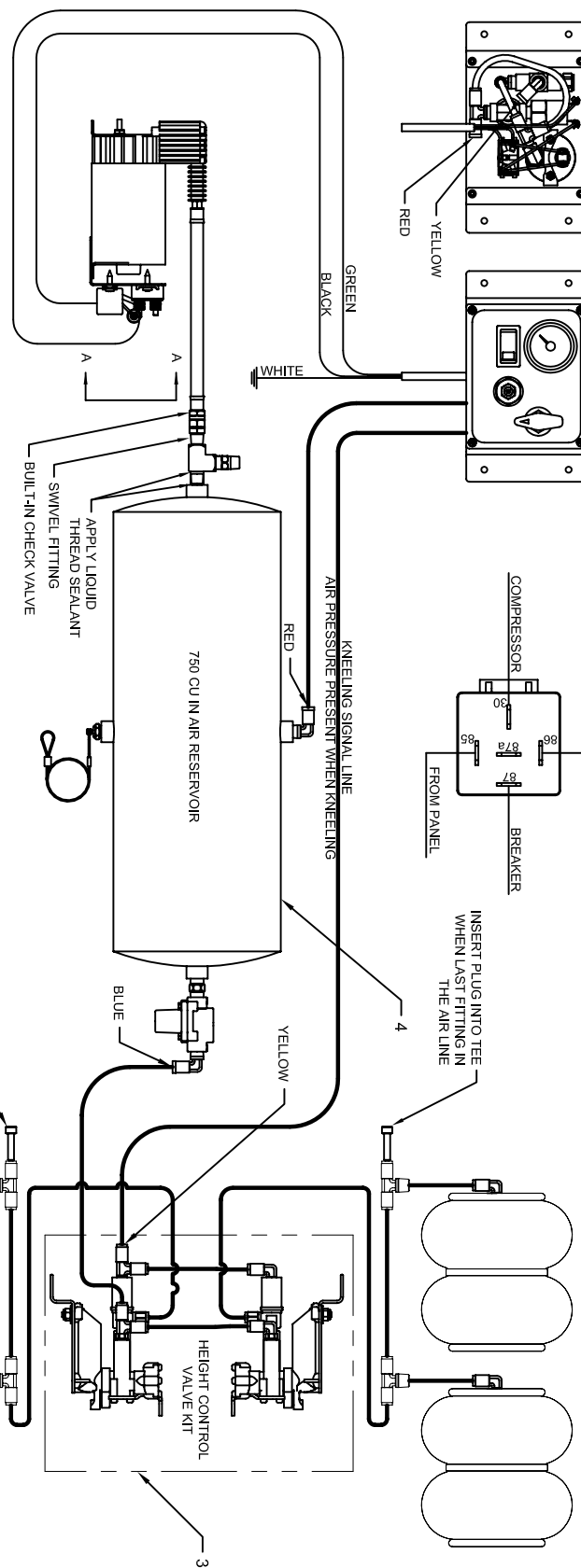
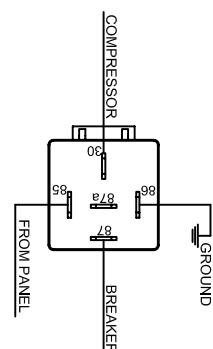
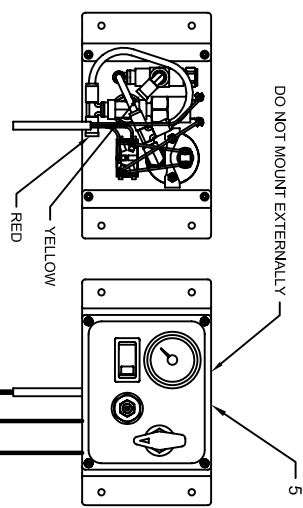


# RELAY TERMINAL DESIGNATION



WIRES TO THE PANEL MUST BE 18 GA. MIN. BATTERY WIRES MUST BE 10 GA. MIN.

- TO USE SHRINK TUBING:**
1. STRIP INSULATION ON WIRE BACK 3/8".
  2. PLACE SHRINK TUBE OVER WIRE.
  3. INSERT WIRE INTO TERMINAL.
  4. CRIMP WIRE IN TERMINAL.
  5. SLIDE SHRINK TUBE TO COVER THE JOINT BETWEEN THE WIRE & THE TERMINAL.
  6. HEAT THE SHRINK TUBE UNTIL IT SHRINKS AROUND THE CONNECTION SEALING IT FROM MOISTURE.

## BILL OF MATERIAL

ITEM QTY.	PART NO.
1	501860
1	501860
2	550124
1	AK102-009
1	501861
1	501329

## CONTINUOUS DUTY PANEL KIT

THIRD ANGLE PROJECTION	SIZE	DRAWING NUMBER
	<b>B</b>	AK100-019V

SCALE	NTS
RELEASE DATE	1/17/03
DATE	9/20/02

WEIGHT	-
DRAWN BY	MKP
CHECKED BY	-

MATERIAL	-
UNLESS OTHERWISE SPECIFIED, ALL DIMENSIONS ARE IN INCHES	-
STANDARD TOLERANCES	-
X.X ± .06	FRAC ± 1/16
X.XX ± .03	ANGLE ± 1°
X.XXX ± .01	-

SUSPENSION TECHNOLOGY INDUSTRIES  
1424 SCALE ST. S.W. CANTON, OHIO 44706  
PHONE (888) 877-3058 FAX (330) 458-3066

03	1468	CHP	04/29/08
02	1389	CHP	11/10/05
01	1383	CHP	10/12/05
REV.	ENCL. NO.	REV. BY	REV. DATE
ENGDRG.	CHANGE	NOTICE	



THIS DRAWING IS THE PROPERTY OF SUSPENSION TECHNOLOGY, IND. AND IS LOANED UPON CONDITION THAT IT IS NOT TO BE REPRODUCED OR COPIED, IN WHOLE OR IN PART, OR USED FOR FURNISHING INFORMATION TO ANY PERSON WITHOUT THE WRITTEN CONSENT OF SUSPENSION TECHNOLOGY, IND. AND ALL COPIES ARE TO BE RETURNED IMMEDIATELY UPON REQUEST.