



200 New Highway, P.O. Box 0726 Amityville, NY, 11701-0726

How to Update the IP Module on the PC16T

We at Speco are constantly adding in new IP cameras to our DVRPC16T compatibility list. Typically these releases will come out about every three months and be posted on our website. When we do release this IP patch, we will also release a new list of compatible cameras.

To initiate this procedure, you must first download the patch. You can find these by going to www.specotech.com and clicking on the Product Support/Software Downloads link. In there, you will find your specific product and any updates that might be available.

To install the update after you have downloaded it, unzip the file if it is in a compressed folder. Once that is done, copy it onto the root of a thumbdrive. What I mean by "root" is that it must be on the first level of the thumbdrive.

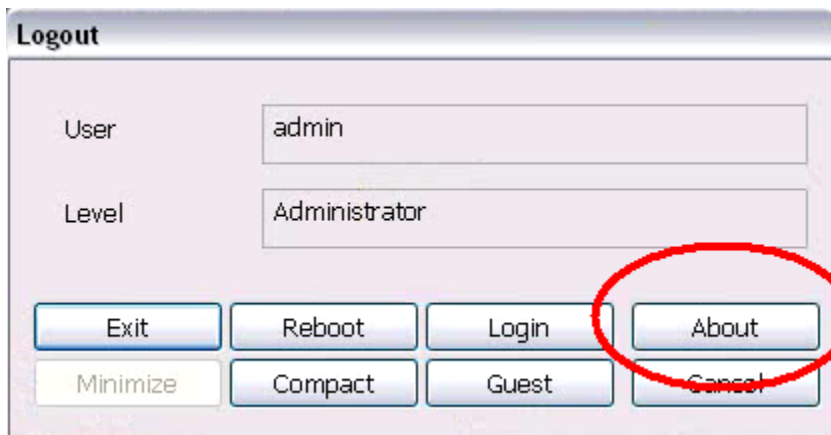
After you have copied it to a thumbdrive, insert it into any one of the USB slots on the device. Remember to unzip the file!

Next, you must click on the circle button in the bottom left corner, as pictured below.

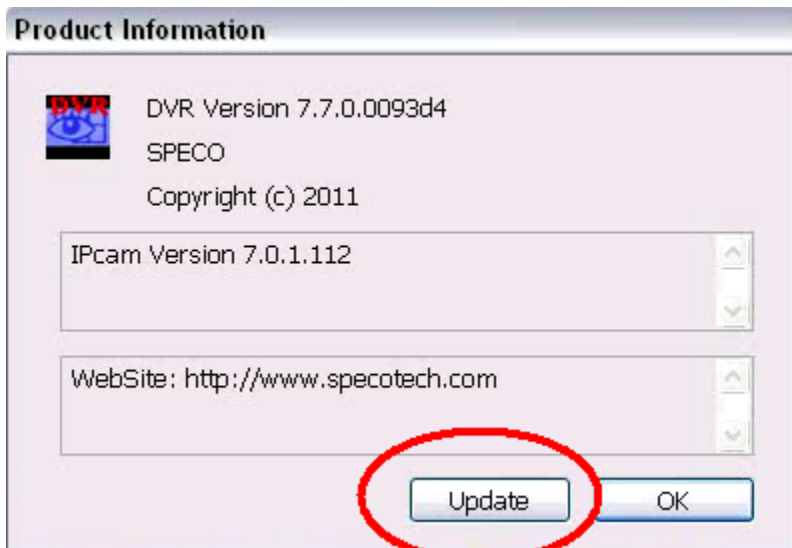


Enter your username and password.

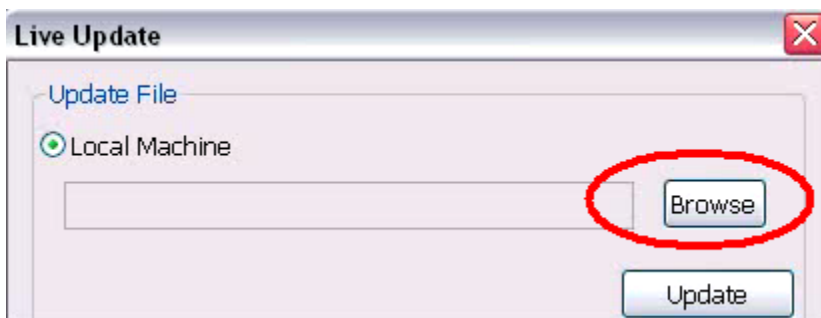
The next page you will see will be the Logout screen. Click the About button as pictured below.



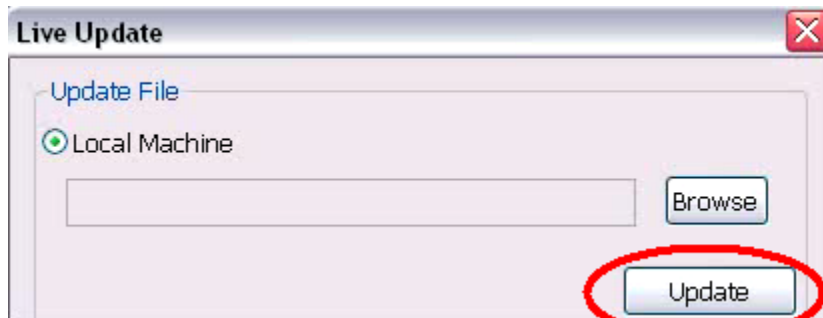
With the USB in the DVR, click the Update button.



This will open up the Update page. Click the Browse button as pictured below and browse for the update. It will be on the USB.



After you have found the file, you will be returned to the Update page. Simple click Update, as pictured below and the DVR will update the IP camera list.



Do not remove the USB! Once it has finished, the DVR will reboot.

You will now have a list of IP cameras that not only had the previous cameras but will also have a list of new additions.

Remember to check which cameras are included in the new update by looking on the same page where you downloaded the update. There will be a new list of cameras.

Congratulations! You have just updated your IP camera module in your DVRPC16T.