

S.M.S.L



SA100

使用说明书

<http://www.smsl-audio.com/>

提示

- 请将本音响系统安装在通风良好、阴凉、干燥、干净的位置，远离直射阳光、热源、振动、灰尘、潮湿或寒冷。
- 本机的上面，请不要放置下列物品：
 - 其他装置。因为这样有可能会造成损坏或导致本机表面变色。
 - 可燃物品（例如蜡烛）。因为这样有可能导致火灾而损坏本机或造成人身伤害。
 - 装有液体的容器。因为有可能发生容器倾倒，液体流淌的可能，如此有可能导致用户触电或损坏本机。
- 不要在本机上面覆盖报纸、台布、窗帘等，以免妨碍散热。如果本机内部温度过高，则有可能导致火灾，损坏本机 或造成人身伤害。
在使用开关，旋钮或缆线时，不要用力过猛。
- 只能使用本机指定的电压。使用高于指定数值的电压很危险，而且可能导致火灾，损坏本机或造成人身伤害。对于使用高于指定电压造成的任何损害双木三林将不负任何责任。
- 不要试图自行改造或修理本机。如果需要任何服务，请就近与有资格的双木三林维修人员联系。不管有任何理由，都没有打开机壳的必要。
- 如果打算长时间不使用本机（比如度假时），请从墙壁交流电源插座上断开电源线的连接。
- 为了加强对于本产品的保护，在雷电期间，或无人管理时以及长时间不使用时，请将电源线从墙壁上的电源插座上拔下。这样将防止该产品在闪电和电网出现电涌时受到损害。

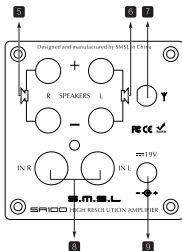
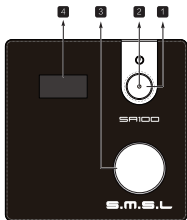
产品特点

- 美国TI大功率数字放大芯片TPA3116。
- 新的蓝牙5.0技术, 兼具低功耗和高音质。
- 电子音量控制, 杜绝电位器调音量时的杂音。
- 具备音效调节, 高低音单独可调。
- 大功率电源适配器, 适配音频的动态响应。
- 极致的小体积, 放置更加灵活。

技术参数

输出功率	50W x 2(4 Ω)
频率响应	20Hz-20KHz
高低音调节范围	-14dB ~ +14dB
总谐波失真	0.05%
通道分离	90dB(1KHz)
输入灵敏度	600mVms
信噪比	90dB
消耗功率	36W
尺寸	55x55x93mm (WxHxD)
重量.....	0.35kg

显示界面和操作介绍



1 电源/输入

2 指示灯

3 旋钮

4 显示屏

5 喇叭输出右声道

6 喇叭输出左声道

7 蓝牙天线

8 路线输入

9 电源输入 (DC19V) 注

注:

请使用本机配套的电源适配器供电, 否则无法达到最佳工作性能, 并有可能导致产品损坏甚至引起火灾!

操作说明

1. 电源 / 输入按键

- 1) 长按“电源/输入”键打开或关闭电源。
- 2) 短按“电源/输入”键切换输入源，输入会在“线路，蓝牙”之间切换，在显示屏上的显示为“AUX, bt”

AUX ←→ bt

- 3) 长按旋钮：
当处于音调设置时，是退出设置模式；
蓝牙输入时，为强制进入配对状态(用于让蓝牙处于其它设备可连接的状态)；
当处于配对状态时，再长按一次就是重新连接上一个已配对的设备！
- 4) 短按“旋钮”，切换高低调节选择
低音调节范围为-7 ~ +7, 每个数字代表2dB的增益!
高音调节范围为-7 ~ +7, 每个数字代表2dB的增益!
- 5) 顺时针或者逆时针旋转旋钮, 调节音量大小。

2. 显示说明

- 1) 开机时，本机会显示“100”意思为“SA100”的意思。
- 2) 在切换输入时会显示 AUX, bt。
- 3) 在低音调节时会显示 b-7 ← b-0 → b7
- 4) 在高音调节时会显示 t-7 ← t-0 → t7
- 5) 音量显示 -40, -39, …… -00。
- 6) LED 显示状态：
 - 待机时显示“红色”；
 - 蓝牙输入时，如未配对设备，蓝灯持续闪烁。
 - 蓝牙输入时，如已连接设备，蓝灯持续点亮

恢复出厂设置

机器在未通电状态下，按住开机键再通电，直到显示屏显示 **---** 之后，松开按键。

保修条款

一、服务期限

佛山双木三林科技有限公司承诺产品的良好品质，产品自售出之后7天内正常使用情况下出现故障，客户可以选择退货或者保修（不影响二次销售才可退货）。正常使用一年内出现故障可以免费保修。

二、购买日期以销售商开出的购机发票或收据日期为准，多购可以交易截图为准。

三、有以下情况都不能享受“三包”服务

- 一切人为因素损坏，包括非正常工作环境下使用或不按照说明书使用；
- 用户私自拆机、改装、维修；
- 使用非指定或许可的配件造成损坏的；
- 机身的QC或保修贴损毁；
- 不能出示有效购机凭证；
- 不属于本公司产品。

四、保修方式为送修

此条款只适于中国大陆，其它地区请参考当地销售代理商的规定和国家法规。

S.M.S.L



SA100

USER MANUAL

<http://www.smsl-audio.com/>

TIPS

- Install this unit in a well ventilated, cool, dry, clean place-away from direct sunlight, heat sources, vibration, dust, moisture, or cold.
- On the top of this unit, do NOT place:
 - Other components, as they may cause damage or discoloration on the surface of this unit.
 - Combustible (i.e. candles) , as they may cause fire , damage to this unit , or personal injury.
 - Containers with liquid in them, as they may fall and the liquid may cause electrical shock to the user or damage to this unit.
- Do not cover this unit with a newspaper, tablecloth, curtain , etc. in order not to obstruct heat radiation. If the temperature inside this unit rises, it may cause fire, damage to this unit, or personal injury.
- Use the voltage specified on this unit Only. Using this unit with a higher voltage than specified is dangerous and may cause fire , damage to this unit, or personal injury. SMSL will not be held responsible for any damage resulting from the use of this unit with a voltage other than that specified.
- Do not attempt to modify or fix this unit by yourself. Contact qualified SMSL service personnel when anyservice is needed. The cabinet should never be opened for any reason.
- When not planning to use this unit for long periods of time (i.e. when going on vacation), disconnect the power cable from the AC wall outlet.
- For added protection for this product during a lightning storm, or when it is left unattended and unused for long periods of time, unplug it from the wall outlet. This will prevent damage to the product due to lightning and power-line surges.

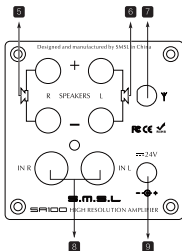
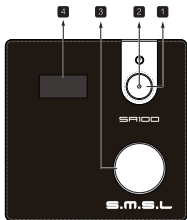
Features

- Texas Instruments's power amplifier digital amplifier chip TPA3116.
- The new Bluetooth 5.0 technology with low power consumption and high sound quality.
- Electronic volume control, without the potential noise of traditional resistor volume control noise when adjusting the volume.
- With tone adjustment, the BASS and TREBLE can be adjusted separately.
- High current adapter adapts to the dynamic response of audio.
- Extremely small size, more flexible placement.

Specification

Output power	50W x 2(4Ω)
Frequency response	20Hz-20KHz
BASS or TREBLE GAIN	-14dB ~ +14dB
THD+N	0.05%
Channel separation	90dB(1KHz)
Input sensitivity	600mVms
SNR	90dB
Power consumption.....	36W
Dimensions	55x55x93mm (WxHxD)
Weight	0.35kg

Display Interface and Instructions



- 1 Power/Input Button
- 2 Standby LED
- 3 Volume Knob
- 4 Display
- 5 Right Speaker

- 6 Left Speaker
- 7 Bluetooth ANT
- 8 AUX Input
- 9 Power Input (DC19V) ^{Note}

Note:

Please use the genuine power adapter to supply power, otherwise it can not achieve the best performance, and may lead to product damage or even cause fire!

Instructions

1. POWER / INPUT KEY

- 1) Hold to switch power ON or OFF.
- 2) Press to switch INPUTS between "AUX, Bluetooth" which display as "AUX, bt"


AUX ↔ bt

- 3) Hold the "Konb":
When in tone settings, it means to EXIT the setting mode;
When Bluetooth inputs, it is forced to enter the pairing state;
When in pairing state, doing it again is re-connecting the last device!
- 4) Short press "Konb" to switch between high and low adjustment options.
The bass range is -7 - +7, and each number represents the gain of 2dB!
The treble range is -7 - +7, and each number represents the gain of 2dB!
- 5) Turn the knob clockwise or counterclockwise to adjust the volume.

2. DISPLAY INSTRUCTIONS

- 1) When starting up the unit, it will display "100", which stands for "M100".
- 2) Display "AUX", "bt" when switching input.
- 3) Display "b-7" ← "b-0" → "b7" in bass adjustment.
- 4) Display "t-7" ← "t-0" → "t7" when tweetering.
- 5) Volume display "-40", "-39",, "-00".
- 6) LED indicator:
 - Turn "red" when standby;
 - Blue LED flashes when Bluetooth is searching devices.
 - Blue LED keeps lighting up when Bluetooth is connected.

Factory Reset

Connect the power cord when pressing the power button, until the screen shows  .

Warranty Terms

1.The term of service

Foshan Shuangmusanlin Electronics Co.,Ltd promise good quality products. If the product is defective by normal use within 7 days after purchasing, the customer can chose to send it back for returning or repairing (only the product does not affect the secondary sales can be returned). Faulty for free within one year warranty normal use.

2.Date of purchase is in accordance with the date on invoice or receipt uesd by seller, on line shopping can show the screenshot of trade.

3.Following situation can not enjoy'Three Guarantees'service:

- All damages by human factors, including use it under non-normal working environment the and not follow manual in structions.
- User privately disassemble, modification, maintenance;
- Using non-designated or approved accessories causes damage;
- QC warranty stickers damage on cabinet;
- Can not provide avalid purchasing prove;
- Not belong to SMSL products.

4.How to guarantee

These terms only suitable for China mainland, other region pleaser refer to the policy of the local sales agents and nations.