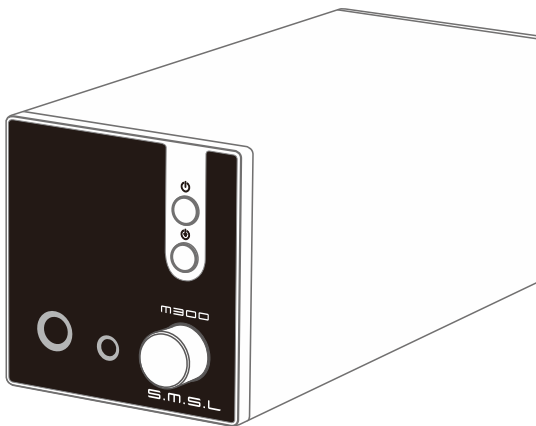


# S.M.S.L



## M300 SE

### 使用说明书



本说明书的内容可能会随版本更改  
如有变动, 恕不另行通知

Ver 1.0

## 安全注意事项

- 请将本音响系统安装在通风良好、阴凉、干燥、干净的位置，远离直射阳光热源、振动、灰尘、潮湿或寒冷。
- 只能使用本机指定的电压。使用高于指定数值的电压很危险，而且可能导致火灾，损坏本机或造成人身伤害。对于使用高于指定电压造成的任何损害，我司将不负任何责任。
- 不要试图自行改造或修理本机。如果需要任何服务，请与销售或者我司客服人员联系。不管有任何理由，都没有打开机壳的必要。
- 如果打算长时间不使用本机（比如度假时），请从墙壁交流电源插座上断开电源线的连接。

### 重要提示：

本说明书所提到的产品规格和资讯仅供参考。如有内容更新，恕不另行通知。

## 保修条款

### 一、服务期限

佛山双木三林科技有限公司承诺产品的良好品质，产品自售出之后7天内正常使用情况下出现故障，客户可以选择退货或者保修（不影响二次销售才可退货）。正常使用一年内出现故障可以免费保修。

二、购买日期以销售商开出的购机发票或收据日期为准，网购可以交易截图为准。

### 三、有以下情况都不能享受“三包”服务

1. 一切人为因素损坏，包括非正常工作环境下使用或不按照说明书使用。
2. 用户私自拆机、改装、维修。
3. 使用非指定或许可的配件造成损坏的。
4. 机身的QC或保修贴损毁。
5. 不能出示有效购机凭证。
6. 不属于本公司产品。

### 四、保修方式为送修

此条款只适于中国大陆，其它地区请参考当地销售代理商的规定和国家法规。

## 特点

- 支持MQA全解码,支持MQA-CD;
- 全新系列的外观设计,配合钢化玻璃面板,兼具高档感和耐用!
- Cirrus Logic公司最新音频解码芯片CS43131,配合精心设计的电路,使其性能达到前所未有的0.00013%(-117dB)的失真度!
- 全新第三代XMOS XU-316,PCM支持到32bit/768kHz,DSD支持到DSD256;
- 蓝牙5.0数字音频输入,外置天线,传输距离更远。
- 时钟系统使用了独立的超低时钟抖动,超低相噪的晶振作为音频时钟。
- 内置高效率电源芯片为解码器提供充足能量,并使用了多组低噪声LDO供电。
- 使用大量的音频专用发烧级电阻电容。
- 使用1.29" OLED显示屏。
- 全平衡设计,并具备真正平衡输出。
- 具备6.35mm、4.4mm平衡耳机输出。
- 配备全功能遥控,并具有前级功能。
- 全铝合金CNC精密加工机壳有效减少干扰。

## 技术参数

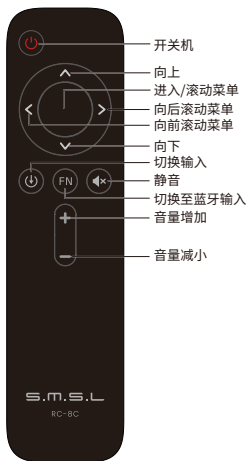
输入接口 .....	USB、光纤、同轴、蓝牙		
输出电平.....	RCA	2.0 Vrms	
	XLR	4.0 Vrms	
THD+N(不计权).....	0.00013% (-117dB)		
动态范围(不计权).....	RCA	120dB	
	XLR	132dB	
信噪比(不计权).....	131dB		
蓝牙规格.....	BT 5.0 (支持 SBC)		
USB传输方式.....	异步传输		
USB兼容性.....	Windows 7 / 8 / 8.1 / 10		
	Mac OS X10.6以上、Linux		
位深.....	USB	1bit, 16~32bit	
	光纤 / 同轴	1bit, 16~24bit	
采样率	USB	PCM	44.1~768kHz
		DSD	2.8224~11.2896MHz
	光纤 / 同轴	PCM	44.1~192kHz
		DSD	DSD64(DoP)
消耗功率.....	3W		
待机功耗.....	<0.1W		
体积.....	70x73x165mm (WxHxD)		
重量.....	0.54Kg		

SMSL保留在不另行通知的情况下进行可能导致规格或特性更改的改进的权利。

## 关于遥控器

- 如果遥控器距离本机很近时操作仍无效，请用新电池更换。
- 如果要长时间不使用遥控器，请取出遥控器的电池。
- 按照电池处置的地方性法规处置废旧电池。

## 遥控器的使用



## 注意

遥控器请使用2节7号(AAA)电池

## 部件介绍



- |                 |                               |                    |
|-----------------|-------------------------------|--------------------|
| <b>1</b> 显示屏    | <b>2</b> 红外接收窗                | <b>3</b> 输入选择按钮    |
| <b>4</b> 电源按钮   | <b>5</b> 6.35mm耳机输出           | <b>6</b> 4.4mm耳机输出 |
| <b>7</b> 旋钮     | <b>8</b> 平衡线路输出               | <b>9</b> 同轴输入      |
| <b>10</b> 光纤输入  | <b>11</b> 单端输出                | <b>12</b> 蓝牙天线     |
| <b>13</b> USB输入 | <b>14</b> 辅助电源输入 <sup>注</sup> |                    |

注:

1. 此电源是辅助使用,内部与USB的电源连接在一起,当使用手机连接本机时,必须在这个接口连接一个5V的电源,以防止手机供电不足对手机造成伤害!
2. 不能使用快速充电器连接此接口,因为有些快速充电器可能会有高于5V的电压输出。

## 功能介绍

### ■ INPUTS (输入方式)

- USB (USB输入)
- BT (蓝牙输入)
- OPT (光纤输入)
- COA (同轴输入)

### ■ DIMMER (自动熄屏)

- 5秒~30秒

(范围5秒 - 30秒, 设置后, 屏会在这个时间内自动熄灭, 遥控或者旋钮任意操作屏幕会重新点亮。这样可以很大程度减少光污染, 提升听音环境的舒适性!)

### ■ OUTPUTS (输出方式)

- ALL (全部输出)
- LINE (线路、平衡输出)
- HP (耳机输出)

### ■ PRE MODE(前级模式)

PRE MODE为输出接口的音量调节功能开关:

- VARIABLE: 输出接口音量是受控的。
- FIXED : 输出接口音量是固定的。

## 功能介绍

### ■ FILTER(滤波器)

- F1 Fast and Low-latency filter (短延时陡降滤波器)
- F2 Fast and Phase-compensated filter (陡降相位补偿滤波器)
- F3 Slow and Low-latency filter (短延迟缓降滤波器)
- F4 Slow and Phase-compensated filter (缓降相位补偿滤波器)
- F5 Nonoversampling filter (非过采样滤波器)

### ■ BRIGHTNESS (显示屏亮度设置)

- LEVEL 1 ~ LEVEL 4

### ■ FN KEY FOR (FN按钮)

- Bluetooth (蓝牙输入)

短按: 直接选择蓝牙输入; 长按: 蓝牙重新连接

### ■ BTRESET (蓝牙重置)

- 在蓝牙模式下, 进入菜单6-6 (蓝牙重置), 此时长按遥控器“上”键3秒, 执行蓝牙重置, 就可以重新匹配蓝牙手机。

### ■ RESET (系统复位)

- 在断电状态下, 下压住旋钮不放手, 此时插上USB线, 就执行系统复位。

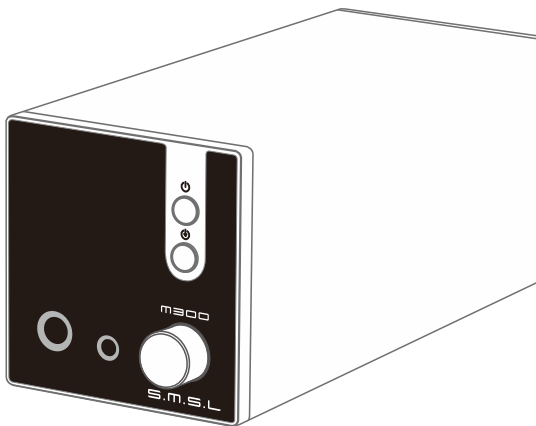


# S.M.S.L



## M300 SE

### USER MANUAL



## Safety Notes

- Install this unit in a well ventilated, cool, dry, clean place-away from direct sunlight, heat sources, vibration, dust, moisture, or cold..
- Use the voltage specified on this unit Only. Using this unit with a higher voltage than specified is dangerous and may cause fire , damage to this unit, or personal injury. Our company will not be held responsible for any damage resulting from the use of this unit with a voltage other than that specified.
- Do not attempt to modify or fix this unit by yourself. Contact alesperson or customer service when any service is needed. The cabinet should never be opened for any reason.
- When not planning to use this unit for long periods of time (i.e. when going on vacation), disconnect the power cable from the AC wall outlet.

Important note:

The product specifications and information mentioned in this manual are for reference only. The content of this manual is subject to change without notice.

## Warranty Terms

### 1.The Term of Service

Foshan Shuangmusanlin Technology Co., Ltd promises to offer good-quality products. If the product is broken in 7 days after purchasing when you use it normally, you can choose to send it back for return, replacement or repairing (only the product does not affect the second sales can be returned ). Repairing for free in one year if you use it normally.

2.Date of purchase is in accordance with the date on invoice or receipt used by seller, and if you buy it on line, you can show the screenshot of trade.

3.If an inappropriate usage causes the unit damaged, the warranty will be void. As below.

- All damages by inappropriate use, including using it under non-normal working environment or without following the instructions.
- Dismantling, refitting, repairing by user in private.
- Causing damage by using some fittings instead of the designative or accredited ones.
- Cannot provide credible proof of purchase.

4.Sending it back to our company for repairing.

5.Contact your S.M.S.L Audio reseller for a return or replacement.

## Features

- Support MQA full decoding, support MQA-CD;
- A new series of exterior design with tempered glass panel, both high-end feeling and durable!
- Cirrus Logic's latest audio decoder chip CS43131, with carefully designed circuitry, achieves an unprecedented 0.00013% (-117dB) distortion performance!
- The new third generation XMOS XU-316, PCM support up to 32bit /768kHz, DSD support up to DSD256.
- Bluetooth 5.0 digital audio input, external antenna, farther transmission distance.
- The clock system uses independent ultra-low clock jitter, ultra-low phase noise for the audio clock.
- Built-in high-efficiency power supply chip for the decoder to provide sufficient energy, and the use of multiple groups of low-noise LDO power supply.
- The use of a large number of audio-specific audiophile resistors and capacitors.
- The use of 1.29 "OLED display.
- Fully balanced design, and has a true balanced output.
- With 6.35mm, 4.4mm balanced headphone output.
- Equipped with full-featured remote control and preamp function.
- All aluminum CNC precision machining chassis to effectively reduce the thousand disturbances.



## Specifications

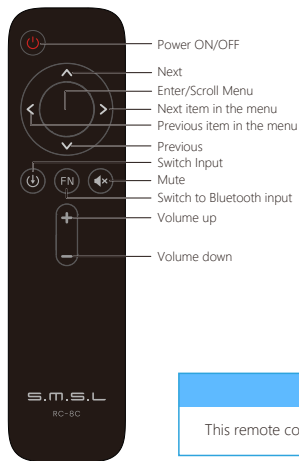
Inputs .....	USB / Optical / Coaxial / Bluetooth		
Output Level.....	RCA	2.0Vrms	
	XLR	4.0Vrms	
THD+N(UN-WTD).....	0.00013% (-117dB)		
Dynamic range (UN-WTD).....	RCA	120dB	
	XLR	132dB	
SNR (UN-WTD).....	131dB		
Bluetooth .....	BT 5.0 ( support SBC)		
USB transmission .....	Asynchronous		
USB compatibility .....	Windows 7 / 8 / 8.1 / 10		
	Mac OS X10.6 or Later / Linux		
Bit depth.....	USB	1bit, 16~32bit	
	Coaxial , Optical	1bit, 16~24bit	
Sampling rate	USB	PCM	44.1~768kHz
		DSD	2.8224~11.2896MHz
	Coaxial , Optical	PCM	44.1~192kHz
		DSD	DSD64(DoP)
Power Consumption .....	3W		
Standby power .....	< 0.1W		
Size .....	70x73x165mm (WxHxD)		
Weight .....	0.54Kg		

SMSL reserves the right to make improvements which may result in specification or feature changes without notice.

## Remote control

- Install 2 x AAA batteries as instructions.
- When using the remote control, point it toward the remote control signal receiver on the main unit from a distance of 5 m (16 ft) or less. Do not place obstructions between the main unit and the remote control.
- The remote control might not work if the remote control signal receiver on the unit is exposed to direct sunlight or bright light. If this occurs, try moving the unit. Beware that use of this remote control could cause the unintentional operation of other devices that can be controlled by infra.

### Operating the remote control



### Note

This remote controller use 2 x R03/AAA batteries.

## Display Interface and Instructions



- |                                 |   |                                 |
|---------------------------------|---|---------------------------------|
| <b>1</b> Display                | <b>2</b> Remote window                      | <b>3</b> Input button           |
| <b>4</b> Power switching button | <b>5</b> 6.35mm headphone output            | <b>6</b> 4.4mm headphone output |
| <b>7</b> Knob                   | <b>8</b> Balanced output                    | <b>9</b> Coaxial input          |
| <b>10</b> Optical input         | <b>11</b> RCA output                        | <b>12</b> Bluetooth antenna     |
| <b>13</b> USB Input             | <b>14</b> Aux Power Supply* <sup>Note</sup> |                                 |

## Note:

1. This is the Aux power input, when you use phones to connect the USB, you need to connect a 5V DC power for avoiding the phone overcurrent ;
2. You cannot use the Quick-Charge power for this connector, because of the Quick-Charge power may output over 5V, which is dangerous for this unit !

## Instructions

### ■ INPUTS

- USB
- BT
- OPT
- COA

### ■ DIMMER

- 5 seconds ~ 30 seconds

(The range is 5 seconds-30 seconds. After setting, the screen will automatically go off within this time, and the screen will re-light up if you operate the remote control or the knob at any time.)

### ■ OUTPUTS

- ALL
- LINE
- HP

### ■ PRE MODE

PRE MODE is the volume adjustment function switch for the output interface:

- VARIABLE: The output interface volume is controlled.
- FIXED : The volume of the output interface is fixed.



## Instructions

### ■ FILTER

- F1 Fast and Low-latency filter
- F2 Fast and Phase-compensated filter
- F3 Slow and Low-latency filter
- F4 Slow and Phase -compensated filter
- F5 Nonoversampling filter

### ■ BRIGHTNESS

- LEVEL 1 ~ LEVEL 4

### ■ FN KEY FOR

- BLUETOOTH

Short press: Directly select Bluetooth input;

Long press: Bluetooth re-entry.

### ■ BTRESET

- In Bluetooth mode, enter menu 6-6 (basket tooth reset), at this time long press the remote control "up" button for 3 seconds, the implementation of Bluetooth reset, then you can match the Bluetooth phone again.

### ■ RESET

- In the power-off state, press and hold the knob and don't release it, then plug in the USB cable and perform the system reset

