



Made in China

<http://smsl-audio.com>

SA-98E
SA-S3

用戶手冊
Manual

尊敬的客戶:

非常感謝您選擇深圳市雙木三林電子有限公司的SA系列數字功放機。SA系列數字功放機採用了先進的設計及高級的發燒材料精製而成。精良的做工，時尚的外觀，簡捷的操作，完美的音質。將給你帶來高貴的視覺、聽覺感受。

關於本手冊:

本手冊中的說明適用於SA-98E和SA-S3數字功放機。請閱讀本手冊后再使用機器。

<http://smsl-audio.com>
深圳市雙木三林電子有限公司

Warning:

In order to reduce the risk of fire or electric shock, do not allow the device to wet or damp. Don't put the machine in such as a bookcase or closet, narrow not ventilated place.

In order to prevent fire, do not let the newspapers, tablecloths, curtains, ventilation holes cover device. Don't put the candle on the device.

To prevent fire or electric shock hazard, do not display vases filled with liquid in the device object.

The installation of the system, so that the fault can immediately put the AC power line from the wall socket extraction.

Do not let the battery over heated, such as sunlight or exposed to fire.

Have to get an electric shock risk it is forbidden to open it.

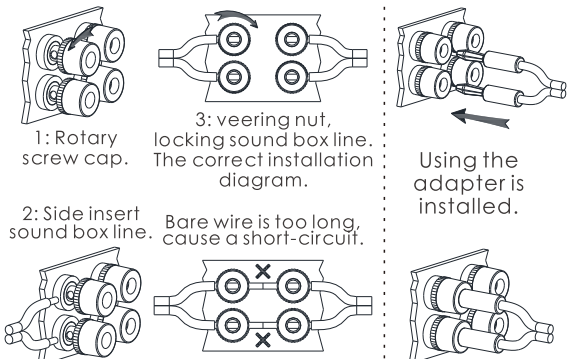
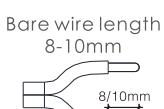
Internal not repair parts, repair consult qualified persons.

To prevent electric shock it is strictly prohibited to open the cabinet, please consult the maintenance qualified people.

Indoors only.

Speaker wiring:

*SA-98E / SA-S3 is the BTL circuit, a 4 output terminal independent, short circuit will burn machine.
*Because the output terminal of narrow space, easy to short circuit. Please note.



1: Rotary screw cap.

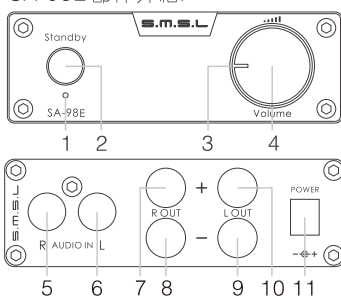
3: veering nut, locking sound box line. The correct installation diagram.

Using the adapter is installed.

2: Side insert sound box line.

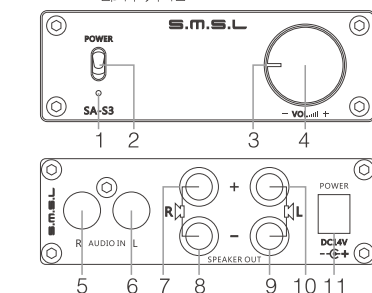
Bare wire is too long, cause a short-circuit.

SA-98E 部件介紹:



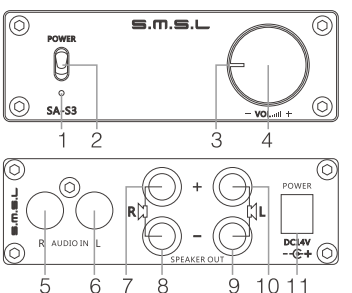
- 1: 電源指示燈
開機/關機不同顏色顯示。
- 2: 電源開關
按下開機, 凸起關機。
- 3: 裝飾背光
開機背光亮起。
- 4: 音量開關
左轉音量減小, 右轉音量加大。
- 5: 右聲道信號輸入
連接紅色音頻線。
- 6: 左聲道信號輸入
連接白色音頻線。
- 7: 右聲道音箱正極輸出
請看輸出接線介紹。
- 8: 右聲道音箱負極輸出
請看輸出接線介紹。
- 9: 左聲道音箱負極輸出
請看輸出接線介紹。
- 10: 左聲道音箱正極輸出
請看輸出接線介紹。
- 11: 電源插座
功放機連接電源適配器后, 再連接市電, 不然會產生火花。

SA-S3 部件介紹:



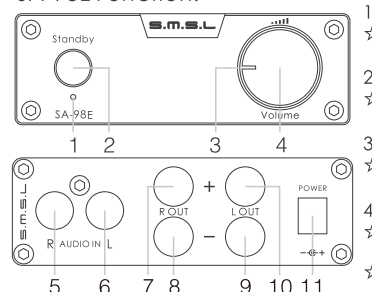
- 1: 電源指示燈
開機亮起。
- 2: 電源開關
向上開機, 往下關機。
- 3: 裝飾背光
開機背光亮起。
- 4: 音量開關
左轉音量減小, 右轉音量加大。
- 5: 右聲道信號輸入
連接紅色音頻線。
- 6: 左聲道信號輸入
連接白色音頻線。
- 7: 右聲道音箱正極輸出
請看輸出接線介紹。
- 8: 右聲道音箱負極輸出
請看輸出接線介紹。
- 9: 左聲道音箱負極輸出
請看輸出接線介紹。
- 10: 左聲道音箱正極輸出
請看輸出接線介紹。
- 11: 電源插座
功放機連接電源適配器后, 再連接市電, 不然會產生火花。

SA-S3 Function:



- 1: Power indicator
★ On / off a different color display.
- 2: Power switch
★ Up, the power on.
- 3: Decorative light
★ power on, give out light
- 4: Volume switch
★ Left rotation volume decrease,
★ Right rotation volume increase.
- 5: Right channel signal input
★ Red audio cable connection.
- 6: Left channel signal input
★ White audio cable connection.
- 7: Right sound channel speaker + interface. (Page 8)
- 8: Right sound channel speakers - interface. (Page 8)
- 9: Left sound channel speakers - interface. (Page 8)
- 10: Left sound channel speaker + interface. (Page 8)
- 11: Power input interface.

SA-98E Function:



- 1: Power indicator
★ On / off a different color display.
- 2: Power switch
★ Press the button, the power on.
- 3: Decorative light
★ power on, give out light
- 4: Volume switch
★ Left rotation volume decrease,
★ Right rotation volume increase.
- 5: Right channel signal input
★ Red audio cable connection.
- 6: Left channel signal input
★ White audio cable connection.
- 7: Right sound channel speaker + interface. (Page 8)
- 8: Right sound channel speakers - interface. (Page 8)
- 9: Left sound channel speakers - interface. (Page 8)
- 10: Left sound channel speaker + interface. (Page 8)
- 11: Power input interface.
★ Recommended to plug in DC to the amplifier before plugging into power Outlet.

輸出接線介紹:

SA-98E / SA-S3 為BTL電路, 4個輸出接線柱各自獨立, 短路或者并聯會燒毀機器。
因為輸出接線柱空間狹窄, 接線容易短路, 請注意操作。

音箱線去皮8-10mm (超出10mm容易短路)

1: 反轉螺帽。
2: 側面對孔插入音箱線。
3: 順轉螺帽, 鎖定音箱線 正確安裝圖。
4: 香蕉頭接法 對準插口插進去

下圖音箱線去皮太長容易短路

警告

為了減少發生火災或觸電的危險, 請勿讓本裝置淋濕或受潮。不要把機器安裝在諸如書櫃或壁櫥等狹窄不通風的地方。為了防火災, 請勿讓報紙, 桌布, 窗簾等蓋住裝置的通風孔。也不可在裝置上點放蠟燭和蚊香。為了防火災或觸電危險, 不可在裝置上擺飾花瓶等滿裝液體的物體。安裝本系統, 以便發生故障時可以立即將交流電源線從牆壁插座上拔除。請勿讓電池過度受熱, 如受到陽光直射或接觸到火等。有觸電危險嚴禁拆開內部無操作者可修理元件, 維修請諮詢具備資格人士。為防止觸電嚴禁拆開機殼, 維修請諮詢具備資格人士。僅限室內使用。

Dear users:

Thank you for choosing Shenzhen ShuangMuSanLin Electronic Co. Ltd SA series of digital amplifier. SA series of digital power amplifier machine adopts the advanced design and advanced HI-FI materials refined. Excellent quality, stylish appearance, simple operation, perfect sound quality. Will bring you elegant visual / auditory perception.

About the manual:

The instructions in this manual applies to SA-98E and SA-S3 digital power amplifier. Please read this manual before using the machine.