

ROCKOLA MAX2

MODEL
481

Stereo
Phonograph
160 Selections

DIGITAL
MICROCOMPUTER
SYSTEM

PARTS CATALOG

FORM NO. 8011

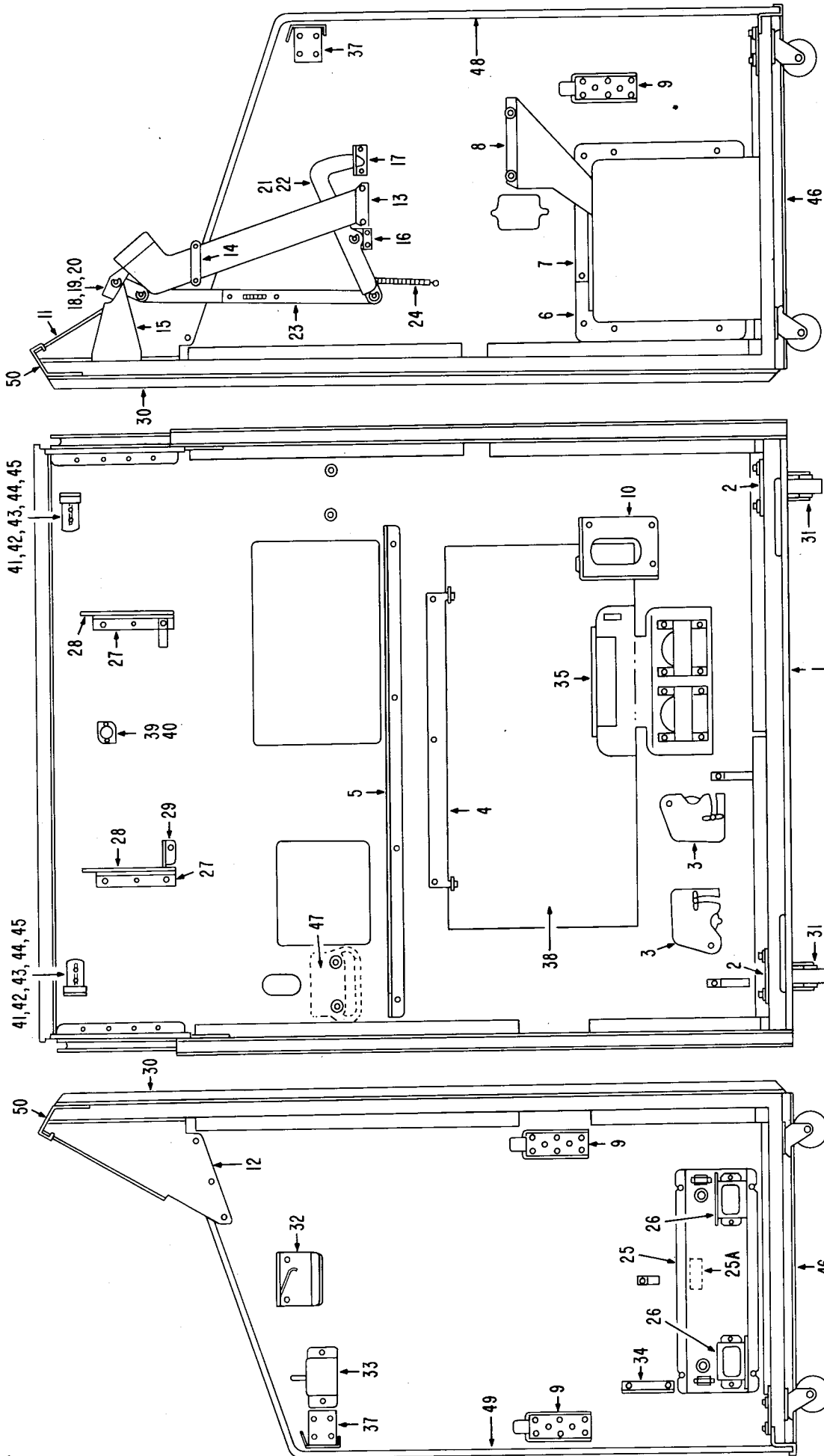
PRINTED IN U.S.A.

PART NO. 53777



TABLE OF CONTENTS

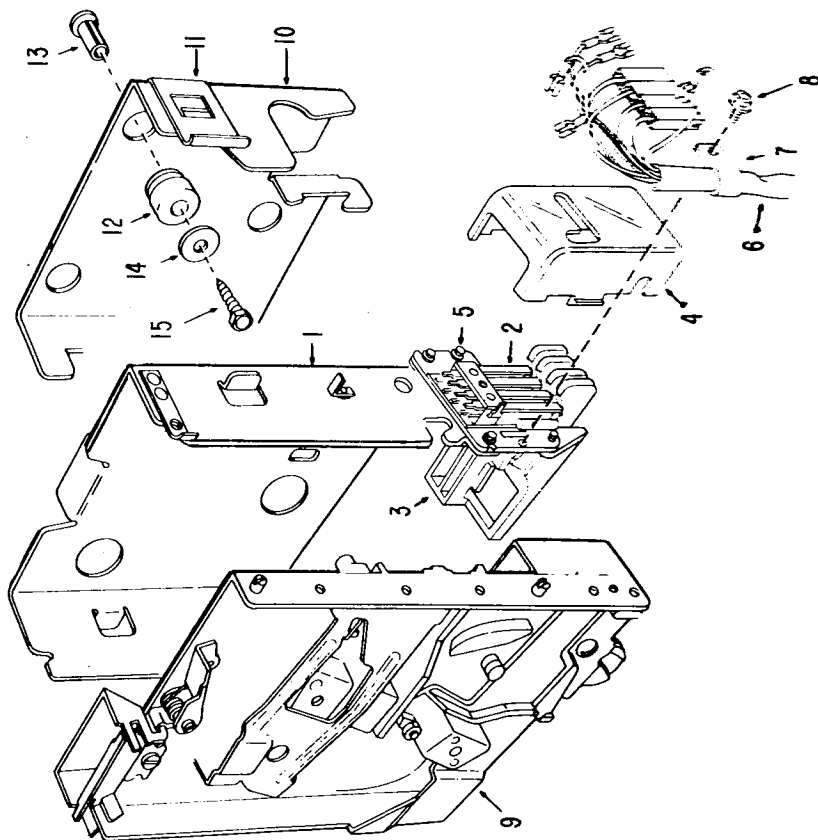
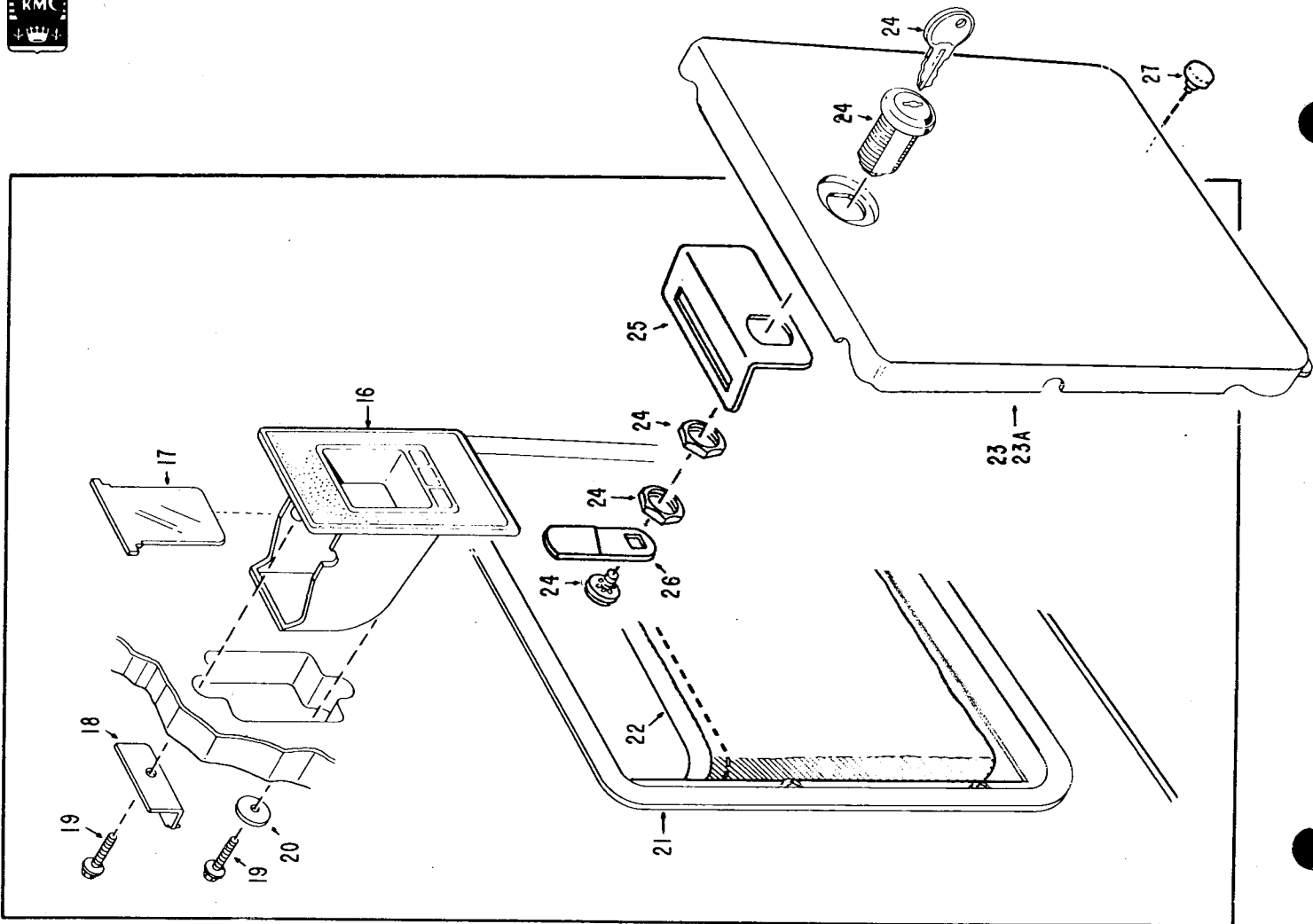
	Page
Cabinet Trim & Related parts	4-5
Rejector & Cash Box Housing Assembly	6-7
Upper Dome Assembly	8-9
Front Door Assembly	10
Module Assembly	12
Audio Distribution Assembly	13
Mechanism Assembly	14-17
Tone Arm Assembly	18-19
Turntable Assembly	20-21
Gripper Housing Assembly	22
Gripper & Magazine Motor Assemblies	23-24
Flasher P.C. Board Assembly	25
Credit Display P.C. Board Assembly	26
Record Play Display P.C. Board Assembly	27
Power Interface P.C. Board Assembly	28-29
Logic P.C. Board Assembly	30-32
Pop Meter (Hit Tracker) P.C. Board Assembly	34-35
Credit Unit (Profit Setter) P.C. Board Assembly	36-38
Opto P.C. Board Assembly	40
Battery P.C. Board Assembly	41
Power Distribution Assembly	42-43
Rectifier P.C. Board Assembly	44-45
Regulator P.C. Board Assembly	46-47
Amplifier Assembly	48
Heat Sink & Driver P.C. Board Assemblies	49
Fuse P.C. Board Assembly	50
Pre-amp & AVC P.C. Board Assembly	51
Tone Control P.C. Board Assembly	
Mute & Squelch P.C. Board Assembly	52
Power Supply P.C. Board Assembly	
Amplifier P.C. Boards Parts List	53-54



CABINET AND RELATED PARTS

Item	Part No.	Description	Item	Part No.	Description
1	52873-1	Door Mtg. Channel (Bronze)	26	43055-2	19W Ballast — 120VAC-60HZ
2	51712	Caster Backing Plate		49256	20W Ballast —220/240VAC-50HZ
3	46956	Cable Cover		53073	19W Ballast — 100VAC-50/60HZ (Japan)
4	52636-1	Back Door Lock Plate	27	52886	Module Support Brkt
5	52869-1	Rest Angle	28	52888	Module Pivot Plate
6	48980	Cash Box Housing	29	52811	Module Reinforce Brkt
7	49043	Lock Strap Cash Box	30	52843-2	Bumper Strip (Bronze)
8	49863	Lower Coin Chute	31	ST-6030-2	Caster
9	52845	Mech Support Brkt	32	52913-A	Dome Stay Rest Angle Assembly
10	52846	Mech Support - Rear (R-H)	33	52664-A	Scan Switch Assembly
11	52870-1	Top Rail Support R-H		52554	Scan Switch Only
12	52871-1	Top Rail Support L-H	34	52702	Bracket — Universal M-N-L Housing
13	52919-A	Coin Chute Assembly	35	52465-A	Audio Distribution Assembly (See Page 13)
14	52076	Coin Chute Strap	37	52844	Tie Bar
15	52868	Plunger Lever Mtg. Brkt	38	52686-3A	Back Door & Bumper Assembly (Bronze)
16	52012-A	Actuator Bracket Assembly	39	V-438	25 Watt Starter
17	51998	Actuator Lever Guide	40	50752	Starter Socket
18	52848	Plunger Lever	41	42859	Fluorescent Lamp (F28" T8 CW/4) Cool White
19	52883	Plunger Lever Pin	42	46634	Fluorescent Light Holder
20	ST-9245	"E" Ring — Truarc	43	46861	Flur-O-Lock
21	52847	Actuator Lever	44	49552	Light Socket Insulator
22	ST-9258	"E" Ring — Truarc	45	52892	Light Mtg Brkt
23	52921-A	Connecting Link Assembly	46	53821	Rub Strip (Bronze)
24	50811	Latch Spring	47	49997-2A	Handle & Brkt Assembly (Bronze)
25	53245-A	Ballast Mtg. Assem. 120V - 19W - 60HZ	48	53738	Plastic Molding R.H.
	53250-A	Ballast Mtg. Assem. 220/240V - 20W - 50HZ	49	53739	Plastic Molding L.H.
	53255-A	Ballast Mtg. Assem. 100V - 19W - 50/60HZ	50	52872-2	Dome Hinge Mtg Brkt (Bronze)
25A	47563	Noise Suppression Capacitors (Export)			







SLUG REJECTOR HOUSING ASSEMBLY

Item	Part No.	Description
1	45411-1A	Slug Rejector Housing Riveting Assem.
2	52530-A	Coin Switch, Guide & Cover Assembly - 50¢
	52535-A	Coin Switch, Guide & Cover Assembly - 25¢
3	52540-A	Coin Switch, Guide & Cover Assembly - Export
4	45460-1	Coin Guide (Only)
5	45463-1	Coin Switch Cover (Only)
6	ST-9733	4-40 X 1/4 Hex Flg. P.K. Swageform
	52917-1A	Coin Switch Cable Assembly - U.S.A.
	52745-A	Coin Switch Cable Assembly - Export
7	ST-3604	Black Nylon Clamp 7/16"
8	ST-8258	6-32 X 3/8 Hex Flg. Swageform
9	53070	Slug Rejector - \$1.00 (NRI)
10	45042-A	Slug Rejector Housing Cab. Rivet Assem.
11	44867	Latch Spring (Only)
12	44517	Mounting Grommet
13	44518	Grommet Spacer
14	ST-3139	Flat Washer
15	ST-9717	#10 X 1 Hex. Flg. (Type A)

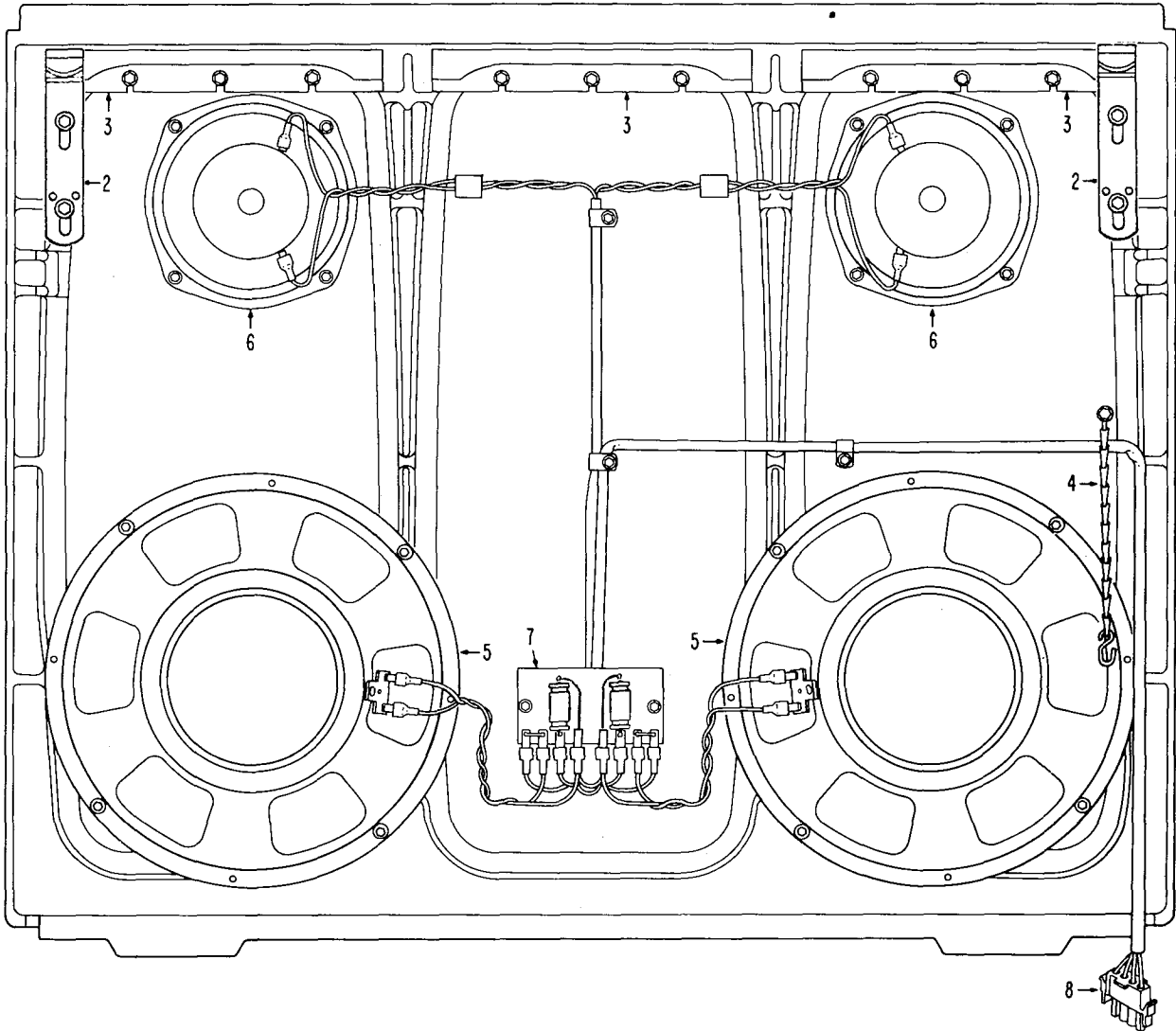
CASH BOX HOUSING ASSEMBLY

16	48982-1	Coin Return Cup (Brown)
17	49041	Coin Return Flap
18	49040	Coin Cup Mtg. Bracket
19	ST-9722	8 X 3/4 Hex Flg. (type B)
20	ST-4843	Flat Washer
21	49060-3	Cash Door Frame (Bronze)
22	49062	Cash Bag
23-A	51019-4-A	Cash Box Door Assembly (Complete) (Bronze)
23	49061-3	Cash Box Door (Only) (Bronze)
24	ST-10441	Lock with Keys
25	53153	Cam Bolt Guard
26	50796-1	Cam Bolt
27	43293	Button Bumper

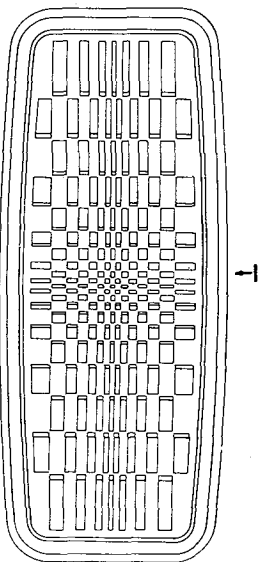


DOME ASSEMBLY No. 53775-A

Item	Part No.	Description	Item	Part No.	Description
1	52802-2	Dome Casting (Bronze)	25	52803-2	Coin Entry Casting
2	53648	Dome Insert	26	53275-1	Reject Button (Tan)
3	52838-1	Dome Front Extrusion		43800-1	Reject Button Spring
4	52809-2	Logo Button		46273	Rubber Washer
	53651	Logo Inserts (Set)		ST-9827	Keeper
5	ST-10423	Lock w/Key	27	52814	Instruction Glass
	ST-10423K	Key Only (P600)	28	52826-1	Instruction Glass Retainer
6	51262-A	Cam Bolt Rivet Assembly	29	52817-2	Price Card U.S.A.
7	ST-10473	Washer		52586	Credit Strip
8	52951-A	Dome Latch R.H. Rivet Assem.		52818-2	Price Card German
9	52837	Dome Latch Bushing		52587	Credit Strip Export
10	52952-A	Dome Latch L.H. Rivet Assem.	30	53644	Bonus Glass
11	52834	Dome Lock Arm	30A	53642	Bonus Card U.S.A.
12	ST-9263	"E" Ring		53643	Bonus Card German
13	45474	Program Holder Spring		41355	Rubber Channel (1/8 x 6-7/16)
14	52812	Program Glass		41355	Rubber Channel (1/8 x 1-1/2)
	50836	Vinyl Channel (1/8 x 30-5/8)	31	52827	Bonus Glass Retainer
	50836	Vinyl Channel (1/8 x 11-5/8)	31A	53641	Bonus Glass Mtg. Brkt.
15	52828	Program Glass Retainer	32	53652	Display Glass
16	52824	Program Glass Top Retainer	32A	53773	Display
17	52956-A	Program Mtg. Brkt. R.H.		53774	Rubber Channel (5/32 x 30-1/2)
18	52957-A	Program Mtg. Brkt. L.H.		53774	Rubber Channel (5/32 x 4-5/8)
19	52901	Scan Switch Cam	33	52823-1	Display Glass Retainer - Bottom
20	52958-1A	Dome Stay Brkt. Assembly	34	52822-1	Display Glass Retainer - Top
21	52998-2A	Program Holder Assembly (Tan)	35	52839-2	Dome Hinge (Bronze)
	53371	Program Holder Number Strip	36	52831	Dome Stay
	46998-4	Program Holder Only (Tan)	37	52892	Light Mtg. Bracket
22	53730-A	Bonus Flasher P.C. Assembly (See Page 25)	38	46634	Fluorescent Light Holder
23	52146	Program Tie Rod - Long	39	49552	Light Socket Insulator
24	51812	Program Tie Rod	40	50752	Starter Socket
	ST-9873	Push Nut	41	V-438	25 Watt Starter

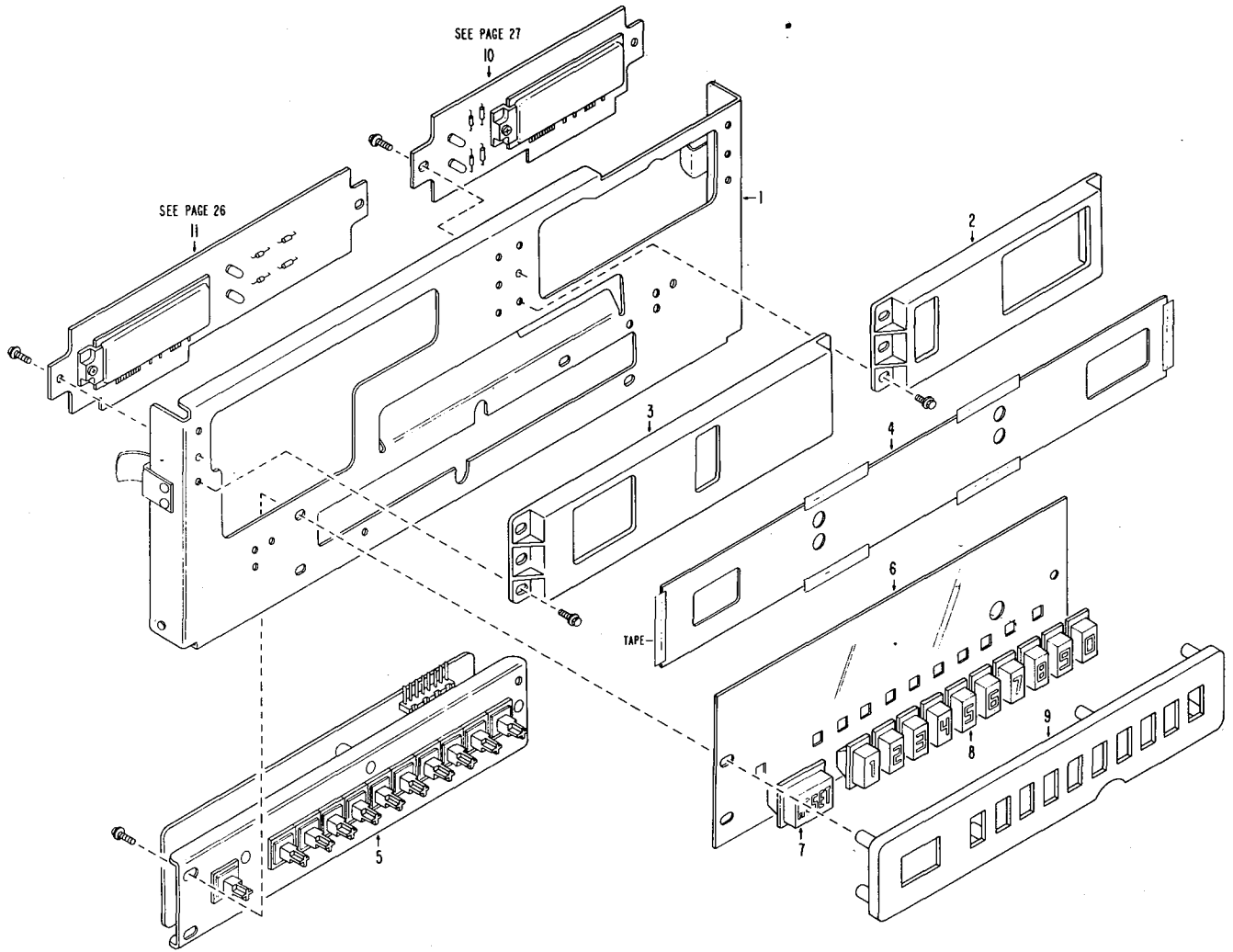


FRONT DOOR ASSEMBLY No. 53770-A



Item	Part No.	Description
1	53653	Grille Cloth (Formed)
	ST-10363	Adhesive (St. Clair 4587)
2	53729	Door Latch Bracket
3	52808-2	Door Light Shield (Purple)
4	ST-10457	Door Chain
	19127	Hook Chain
5	51781	12" Speaker
6	51502	6" Speaker
7	52890-1A	Speaker Crossover Term Brd
	48844-1	8 Mfd 35V RMS NP Capacitor 20%
8	ST-10590	Universal 4 Circ MNL Pin Hsg





MODULE ASSEMBLY No. 52780-2A

Item	Part No.	Description	Item	Part No.	Description
1	52923-A	Front Plate Rivet Assem.		51498	Diode 2N4148
2	52306	Record Selection Casting		ST-10578	8 Cir. Right Angle Post Connector
3	52304	Signal Light Casting		ST-4555	6-32½ Phil Pan Hd M.S.
4	52819 -1	Display Card (Domestic)	6	52997 - 2	P.B. Blue Filter
	52820 -1	Display Card (German)	7	52243	Reset Button (Domestic)
	52908 -1	Display Card (Japan)		52244	Reset Button (German)
5	52425-A	Keyboard Assembly	8	52242	Switch Button Set
	52179-A	Mtg. Channel Rivet Assem.	9	52804 - 2	Push Switch Housing (Bronze)
	52252	Switch-Pushbutton	10	52030-A	Record Play P.C. Brd Assem.
	52253	Keyboard P.C. Board	11	52035-A	Credit Display Brd Assem.

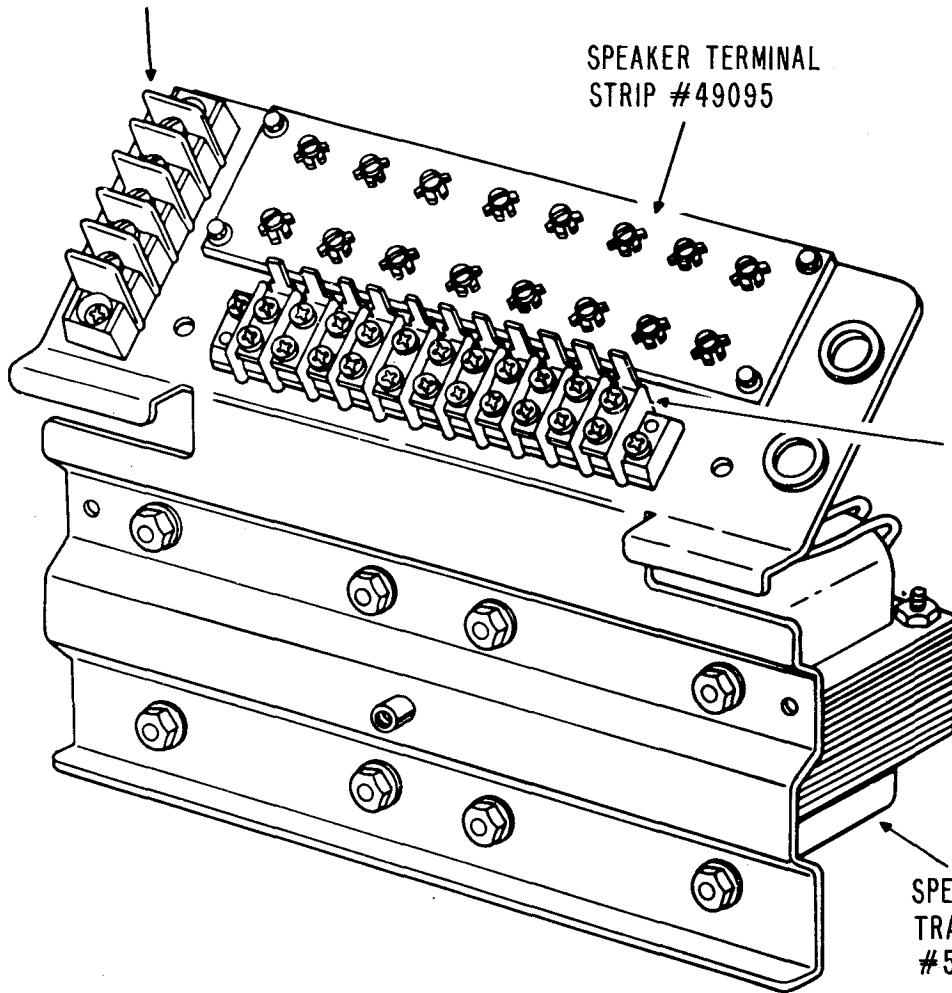


MOTORIZED REMOTE VOLUME CONTROL
TERMINAL #49296

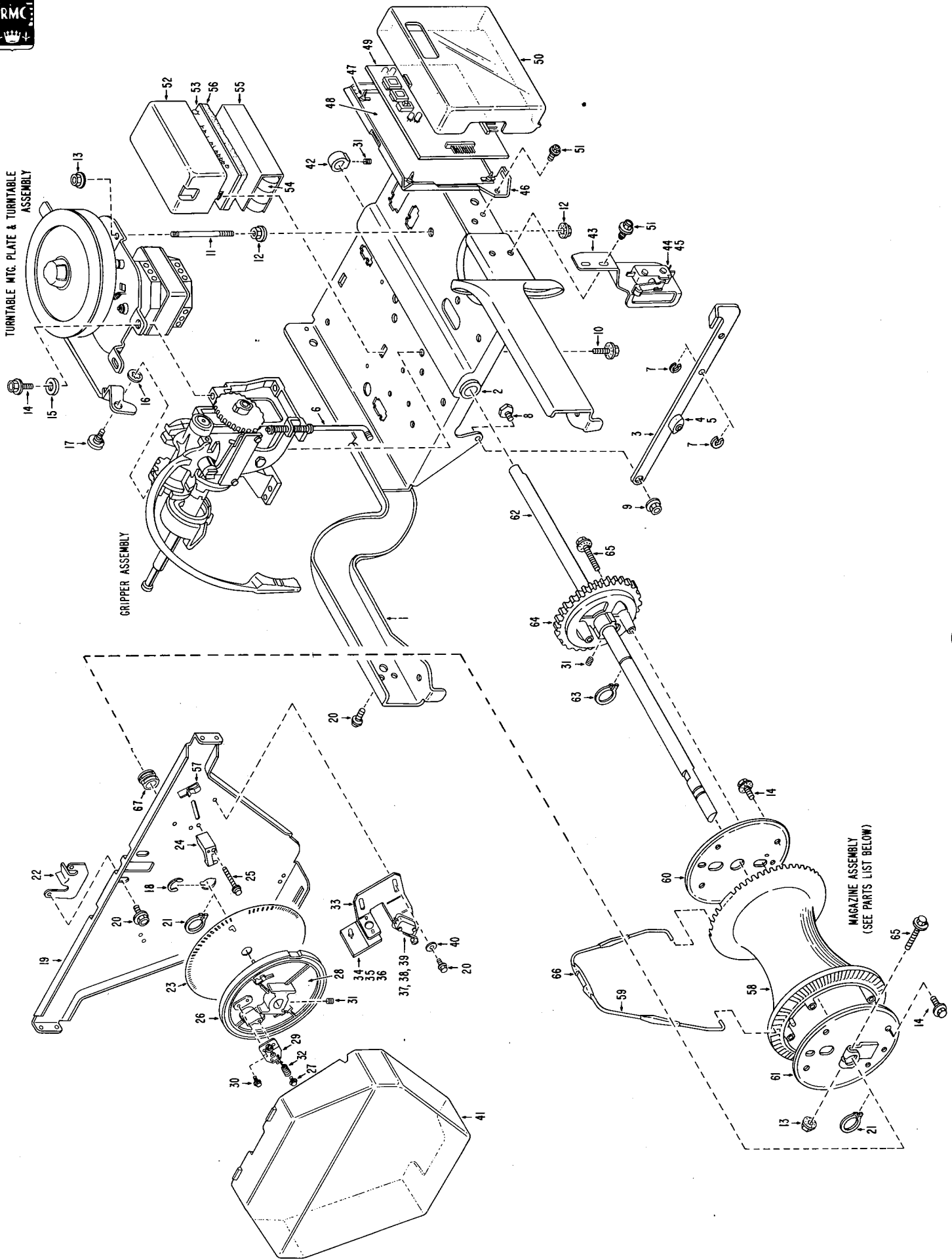
SPEAKER TERMINAL
STRIP #49095

WALL BOX TERMINAL
BLOCK #43780-1

SPEAKER OUTPUT
TRANSFORMER R & L
#52473



AUDIO DISTRIBUTION ASSEMBLY #52465-A



MECHANISM ASSEMBLY 160 SELECTION NO. 52185-A

Item	Part No.	Description	Item	Part No.	Description	Item	Part No.	Description
1	52475-A	Chassis Plate Weld Assembly	24	52173	Guide Block	47	ST-10657	Circuit Board Support
2	52308	Main Bearing	25	ST-2575	8-32 x 1 1/4 Hex Fig. Whiz Lock	48	52198	Power Board Insulator
3	52478-A	Linkage-Gripper & Stud	26	52171	Adjustment Disc	49	53560-A	Logic P.C. Board Assembly
4	34317	Rivet Assembly	27	ST-10437	8 x 5/8 Hex Fig. (Type B)	50	52176-A	Logic Board Cover
5	ST-9249	Odd-Even Alternating Dog	28	52172	Adjustment Disc Holder	51	ST-8269	8-32 x 3/8 Hex Fig. Swageform
6	52202	Truarc "E" Ring	29	52518-A	Nut Mounting Plate Assembly	52	52178	Battery Housing
7	ST-9825	Connecting Rod-Gripper Linkage	30	ST-8295	8 x 5/16 Hex Fig. (Type B)	53	52255-A	Battery Board Assembly
8	34422-1	Keeper	31	ST-3509	1/4-20 x 5/16 Hex Socket	54	52512-A	Battery Pack Assembly
9	ST-8722	Hex Stud	32	37672	Set Screw	55	52731	Battery Pack Insulator
10	ST-2588	10-32 Fig. Hex Whiz Lock Nut	33	52188	Tension Spring	56	41352	Foam Cushion 1/4 x 1/2 x 4
11	36312-1	1/4-20 x 3/8 Hex Fig.	34	52250-A	Module Mtg. Plate	57	ST-9819	Cable Clamp
12	ST-8723	Turntable Mounting Stud	35	52197	Opto Board Assembly			
13	ST-8722	1/4-20 Whiz Lock Nut	36	52766	Opto Board Insulator			
14	ST-2578	10-32 Whiz Lock Nut	37	ST-6551	Opto Light Shield			
15	ST-4864	10-32 x 3/8 Hex Fig. Whiz Lock .203 I.D. x 1/2 O.D.	38	43494	4-36 x 9/16 Phil Pan Hd. M.S.			
16	ST-4862	#10 Shakeproof Lock Washer	39	43414	Micro Switch Insulator	58	43030	Hub Magazine
17	35813-1	Drive Bracket Screw	40	ST-4835	SPDT Enclosed Snap Switch	59	43222-A	Separator Wire Assembly
18	ST-9264	Retaining Ring	41	52174	11/64 I.D. x 1/2 O.D. x .032 Flat Washer	60	43218-1	Cover - Magazine Wire
19	53834	End Mounting Plate	42	52193	End Plate Cover	61	43226-A	Cover & Bracket Welding Assembly
20	ST-2566	8-32 x 1/4 Hex Fig. Whiz Lock	43	52204	Main Shaft Collar	62	52192	Main Shaft
21	ST-9377	Retaining Ring	44	52389	Odd-Even Switch Bracket	63	ST-9194	Truarc Retaining Ring
22	46378	Rest Bracket - Gripper Arm	45	ST-4570	A-B Snap Switch	64	52177	Drive Gear
23	52189	Encoder Disc	46	52199	6-32 x 7/8 Phil Pan Hd. M.S. Board Mtg. Plate	65	ST-2586	10-32 x 1-1/2 Hex Fig. Whiz Lock
						66	47061	Magazine Label
						67	50308-1	End Plate Bearing

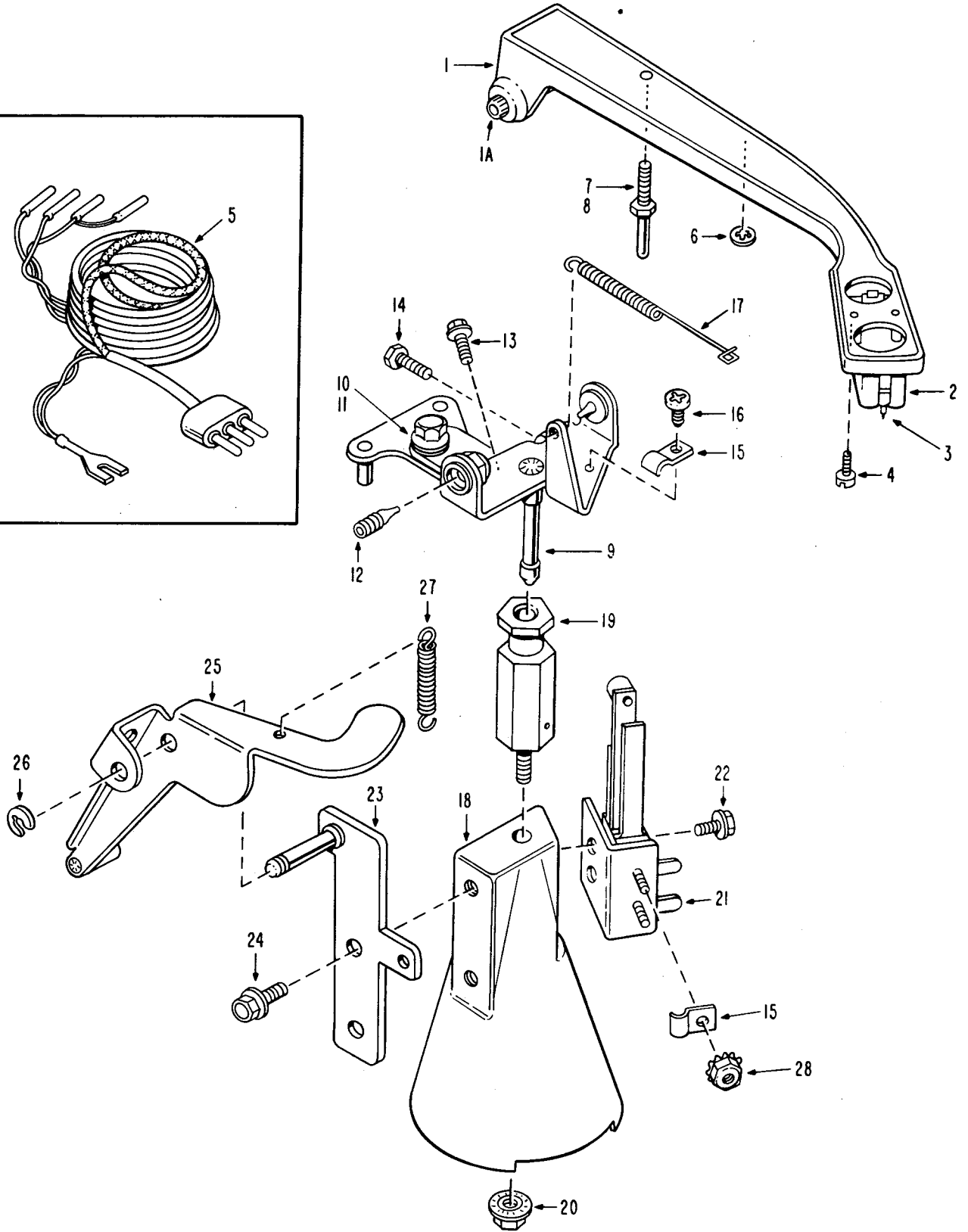
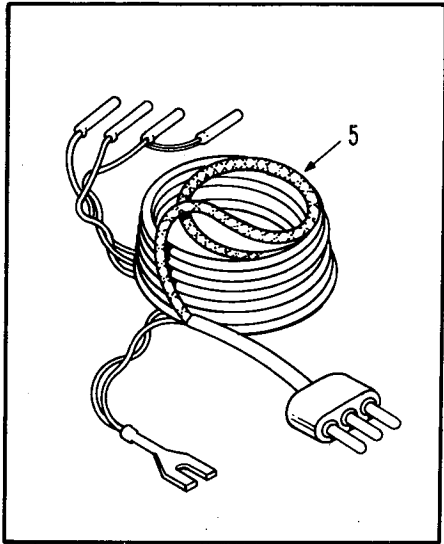
MAGAZINE ASSEMBLY NO. 52120-A



MECHANISM ASSEMBLY — Continued

Item	Part No.	Description
1	46368-2	Electronic Counter Only
2	ST-8258	6-32 x 3/8 Hex Flg.
3	39120-3	Record Guard Steel Band
4	ST-2566	8-32 x 1/4 Hex Flg. Whiz Lock
5	ST-2569	8-32 x 1/2 Hex Flg. Whiz Lock
6	52206	Mounting Bracket — Gripper Motor
7	52498-1A	Gripper Motor Assembly — Compl — MAMCO Interchangeable with
8	52499-A	Gripper Motor Assembly — Compl — RAE
9	ST-2589	1/4-20 x 1/2 Hex Flg. Whiz Lock
10	ST-2588	1/4-20 x 3/8 Hex Flg. Whiz Lock
11	52502-A	Magazine Motor Assembly — RAE
12	43492	Micro Switch Mounting Plate
13	ST-2578	10-32 x 3/8 Hex Flg. Whiz — Lock
14	43494	Micro Switch Insulator
15	43414	Spdt Enclosed Snap Switch
16	ST-6551	4-36 x 9/16 Phil Pan Hd. M.S.
17	ST-6552	4-36 x 1 Phil Pan Hd. M.S.
18	43493-1	Micro Safety Cam
19	ST-2253	10-32 x 1/4 Allen Hd Set Screw
20	52199	Board Mtg Plate
21	ST-10657	Circuit Board Support
22	52198	Power Board Insulator
23	52245-A	Power P.C. Board Assembly
24	52175	Power Board Cover
25	ST-8269	8-32 x 3/8 Hex Flg. Swageform
26	39680	Chassis Spring (Red)
27	34403-1	Spring Mtg. Bolt
28	34404	Mounting Bolt Washer
29	ST-9827	Keeper
	50308	Main Bearing





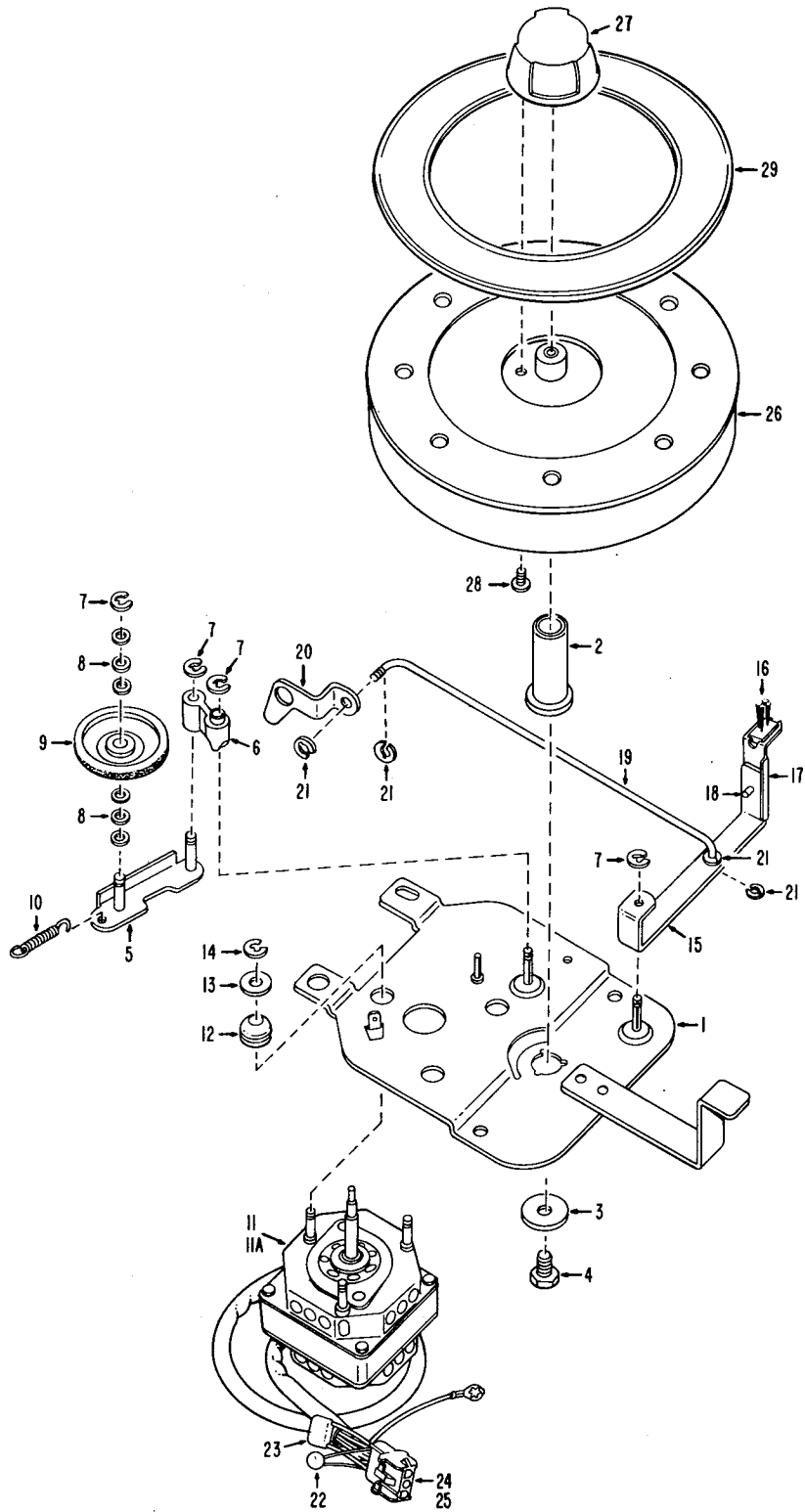


TONE ARM ASSEMBLY — MAGNETIC NO. 52130-A

Item	Part No.	Description
1	41611-A	Tone Arm & Pivot Shaft Assembly
1A	41435	Tone Arm Pivot Shaft
2	43467	M44MR Shure Pickup Cartridge (Special)
3	43469	Stylus
4	ST-6564	4-40 x 3/8 Phil. F.H.M.S.
5	47178-1A	Dual Input Cable
6	ST-314	Shakeproof Lockwasher #3
7	41446	Tone Arm Rest Pin
8	ST-423	5-40 Hex Nut
9	41608-A	Pivot Bracket Riveting Assembly
10	ST-399	Flat Washer
11	ST-2576	10-32 x 1/4 Hex Flg. Whiz Lock
12	41433	Tone Arm Pivot Screw
13	ST-2547	5-40 x 3/8 Hex Flg. Whiz Lock
14	ST-2520	6-32 x 1/2 Hex Hd. M.S.
15	17011	Wire Clip
16	ST-4574	5-40 x 3/16 Phil. P.H. M.S.
17	41758	Tone Arm Spring

TONE ARM BASE ASSEMBLY NO. 51890-A

18	41366	Tone Arm Base
19	41612-A	Pivot Bushing & Ball Assembly
20	ST-8717	10-32 Hex Whiz Lock Nut
21	41649-2A	Tone Arm Switch & Bracket Assembly
22	ST-2555	6-32 x 1/4 Hex Flg. Whiz Lock
23	52159-A	Support Bracket & Stud Assembly
24	ST-2566	8-32 x 1/4 Hex Flg. Whiz lock
25	41609-A	Lifter Lever & Cam Pin Assembly
26	ST-9825	Keeper
27	34444	Lifter Lever Spring
28	ST-3457	5-40 Keps Nut



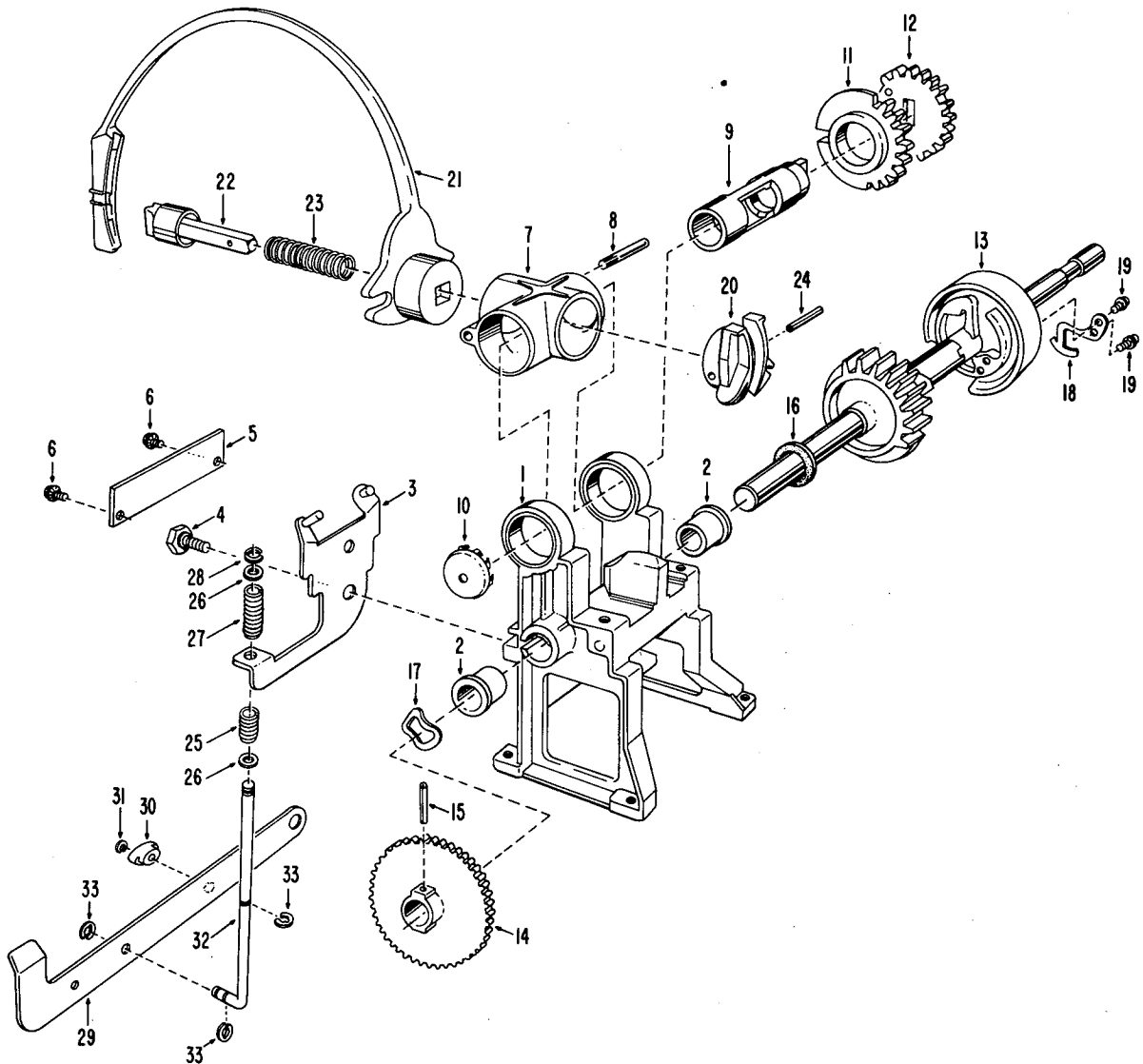


45 R.P.M.—60HZ TURNTABLE MOUNTING PLATE ASSEMBLY NO. 52090-A
45 R.P.M.—50HZ TURNTABLE MOUNTING PLATE ASSEMBLY NO. 52095-A

Item	Part No.	Description
1	52232-A	Turntable Mounting Plate Riveting Assembly 45
2	46294	Turntable Bearing
3	ST-4808	.203 I.D. x 3/4 O.D. x .062 Flat Washer
4	46296	Turntable Shaft Bearing
5	52144-A	Idler Link Riveting Assembly
6	35830	Link Toggle
7	ST-9266	Truarc "E" Ring
8	36291	Fiber Washer
9	35831	Idler
10	35832	Idler Spring
11	52485-A	Turntable Motor Assembly 60HZ
11A	52555-A	Turntable Motor Assembly 50HZ
12	18849	Turntable Grommet
13	ST-4813	.203 I.D. x 1/2 O.D. x .032 Flat Washer
14	ST-9263	Truarc "E" Ring
15	52217	Brush Arm
16	17008	Brush
17	48489	Brush Holder
18	ST-8256	6-32 x 1/4 Hex. Fig.
19	52233	Drive Rod
20	36294-1	Drive Bracket
21	ST-9825	Keeper
22	53014	Metal Oxide Varistor 150V
23	52763	.1 MFD 125 V.A.C. Capacitor
24	ST-10496	Universal Pin
25	ST-10589	3 Circ. Universal Socket Housing

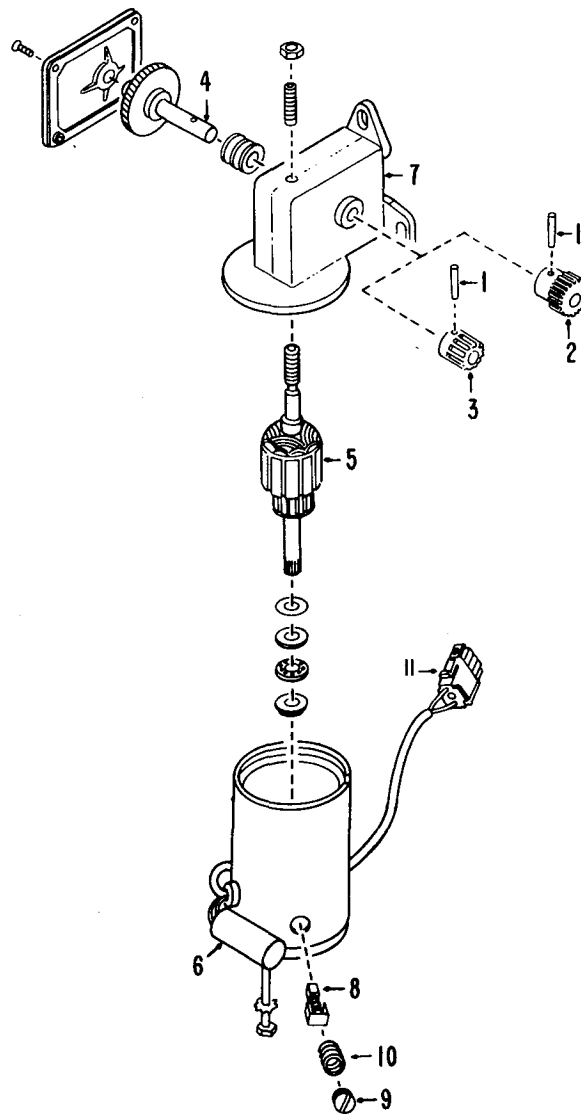
45 R.P.M. TURNTABLE ASSEMBLY COMPLETE NO. 52100-A

26	52235-A	Turntable Assembly
27	52236	Record Hub — 45 R.P.M.
28	ST-8211	6 x 1/2 Phil. Pan Hd. (Type B)
29	52237	Turntable Mat



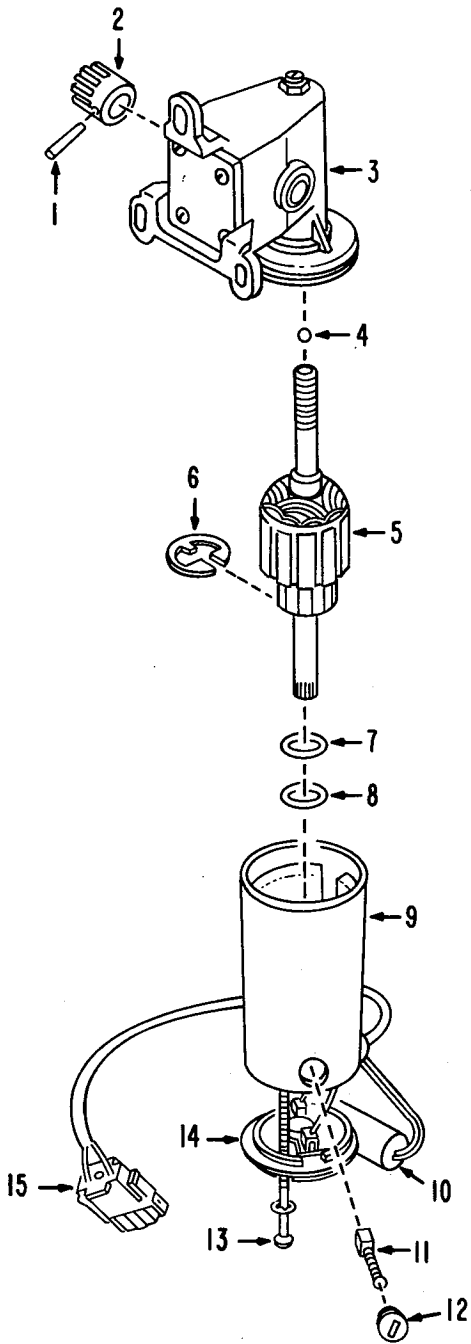
GRIPPER ASSEMBLY NO. 52125-A

Item	Part No.	Description	Item	Part No.	Description
1	45421-1	Gripper Housing	18	17524	Tone Arm Cam Keeper Spring
2	45422	Gripper Housing Bearing	19	ST-2555	6-32 x 1/4 Hex Flg. Whiz Lock
3	52268-A	Brkt. Gripper Rev. Rivet Assem.	20	34323-7A	Cam-Gripper Reversing Assem.
4	34422-1	Hex Stud	21	34322-6A	Gripper Arm Assembly
5	34371	Reversing Brkt. Ret. Strip	22	34314-A	Inner Gripper Assembly
6	ST-2568	8-32 x 3/8 Hex Flg. Whiz Lock	23	39775	Spring - Gripper
7	34315-6	Gripper Spider	24	ST-534	Spirol Pin - Medium Duty
8	34421	Gripper Stop Pin	25	34864	Spring - Connecting Rod - Lower
9	34399	Trunnion Shaft	26	ST-4853	Flat Washer
10	34877	Trunnion Shaft Button	27	34447	Spring - Connecting Rod - Upper
11	34312-1	Gripper Turnover Gear	28	ST-9825	Keeper
12	36308-1A	Gripper Release Gear Assem.	29	52478-A	Linkage - Gripper & Stud Rivet Assem.
13	43359-1A	Gripper Shaft Assem.	30	34317	Odd-Even Alternating Dog
14	34310	Gripper Shaft Gear	31	ST-9249	"E" Ring
15	ST-534	Spirol Pin - Medium Duty	32	52202	Connecting Rod - Gripper Linkage
16	34929	Gripper Shaft Thrust Washer	33	ST-9825	Keeper
17	ST-4828	Spring Washer			



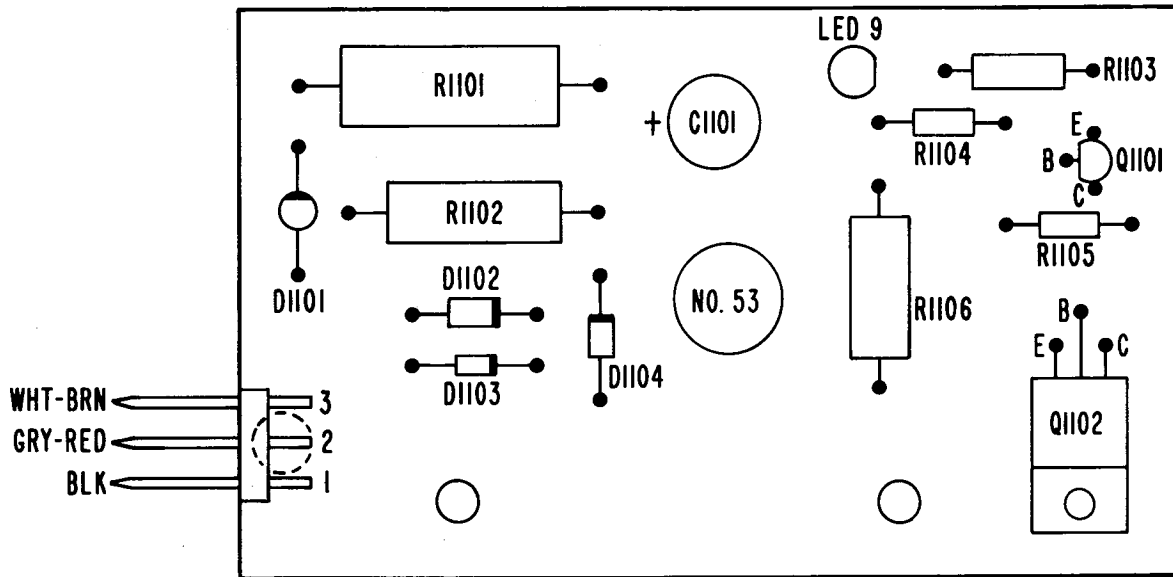
(RAE) GRIPPER MOTOR No. 52499-A—COMPLETE
(RAE) MAGAZINE MOTOR No. 52502-A—COMPLETE

Item	Part No.	Description
1	ST-530	Spirol Pin — 1/8 Dia. x 3/4
2	34308	Magazine Drive Gear
3	34309	Gripper Motor Gear
4	52931	Gear & Shaft Assembly
5	52939	Armature Assembly
6	47563	Noise Suppression Capacitor
7	52934	Gearhead Housing Assembly
8	52944	Motor Brush
9	52942	Brush Cap
10	52945	Spring
11	ST-10586	3 Circ. Universal Pin Hsg.
	ST-10498	Universal Pin



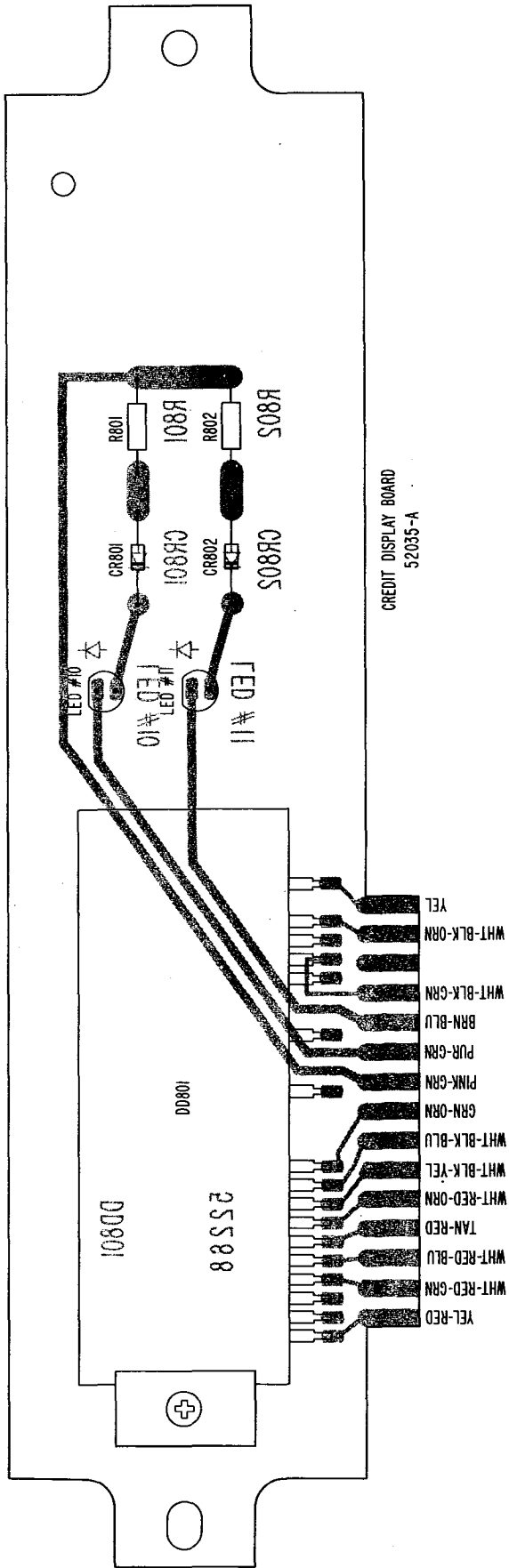
(MAMCO) GRIPPER MOTOR No. 52498-1A COMPLETE
 (Interchangeable With Gripper Motor No. 52499-A)

Item	Part No.	Description
1	ST-530	Spirol Pin – 1/8 Dia. x 3/4
2	34309	Gripper Motor Gear
3	53793	Gear Box Assembly (complete)
4	53794	Ball Bearing
5	53795	Armature Assembly
6	53796	Tru-Arc Keeper
7	53797	Trust Washer
8	53797	Trust Washer
9	53798	Tube Assembly
10	45763	Noise Suppression Capacitor
11	50361	Motor Brush
12	50362	Brush Cap
13	ST-10456	Thru Bolt
14	51073	Housing & Brush Holder Assembly
15	ST-10586	3 Ckt Universal Pin Hsg.
	ST-10498	Universal Pin



BONUS FLASHER BOARD ASSEMBLY No. 53730-A

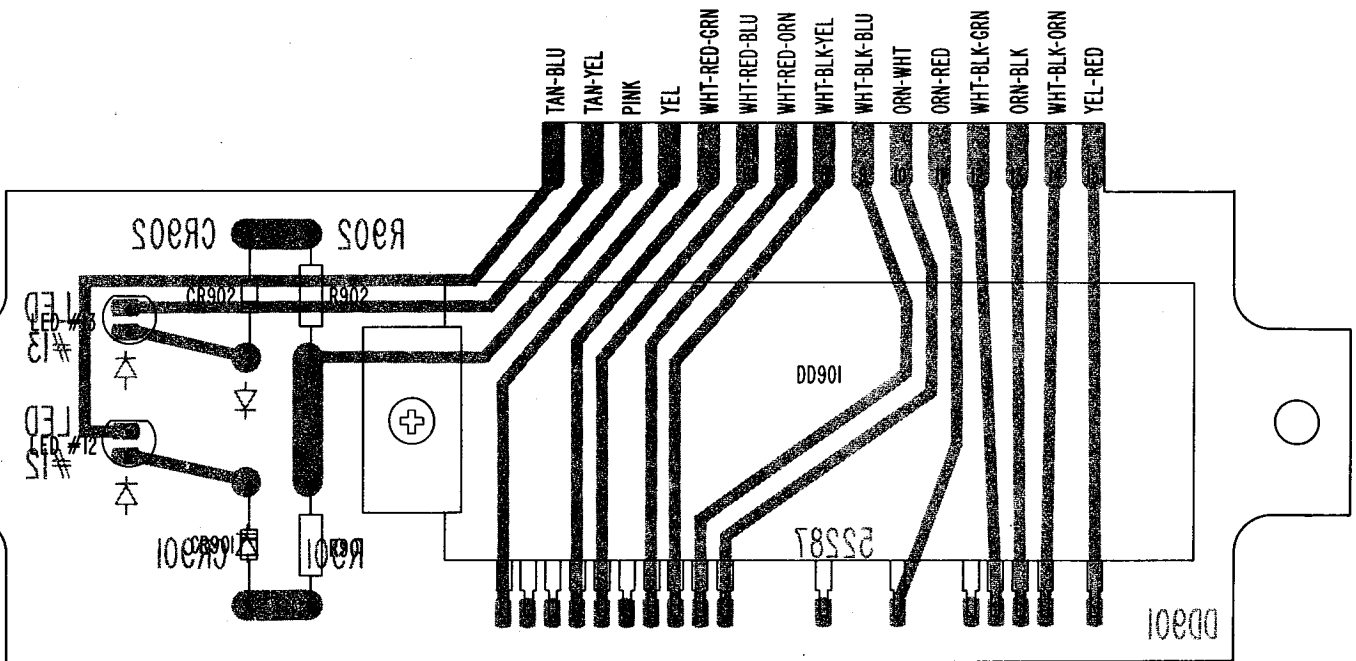
Item	Part No.	Description
RESISTORS		
R1101	39706	39 Ohm 3W 10%
R1102	53749	1K Ohm 2W 10%
R1103	43549	51 Ohm 1/2W 5%
R1104	51293	10K Ohm 1/4W 5%
R1105	51567	3.3K Ohm 1/4W 5%
R1106	32494	470 Ohm 1W 5%
CAPACITORS		
C1101	52361	47 Mfd 50 WVDC -10+50%
DIODES		
D1101	47972	Rect Glass 1.5 Amp 200 PRV
D1102	46497	Rect Min Sil 1 Amp 100 PRV (IN4002)
D1103	51498	Diode Sil Switching (IN4148)
D1104	48101	Diode Zener 5.6V 1W (IN4734A)
TRANSISTORS		
Q1101	49415	MPSA06 (NPN)
Q1102	53736	TIP 29B (NPN)
MISCELLANEOUS		
MIS1	46496-1	Light Socket
MIS2	46739	Lamp #53
MIS3	ST-10612	3 Cir Right Angle Post Connector



CREDIT DISPLAY BOARD
52035-A

CREDIT DISPLAY P.C. BOARD NO. 52035-A

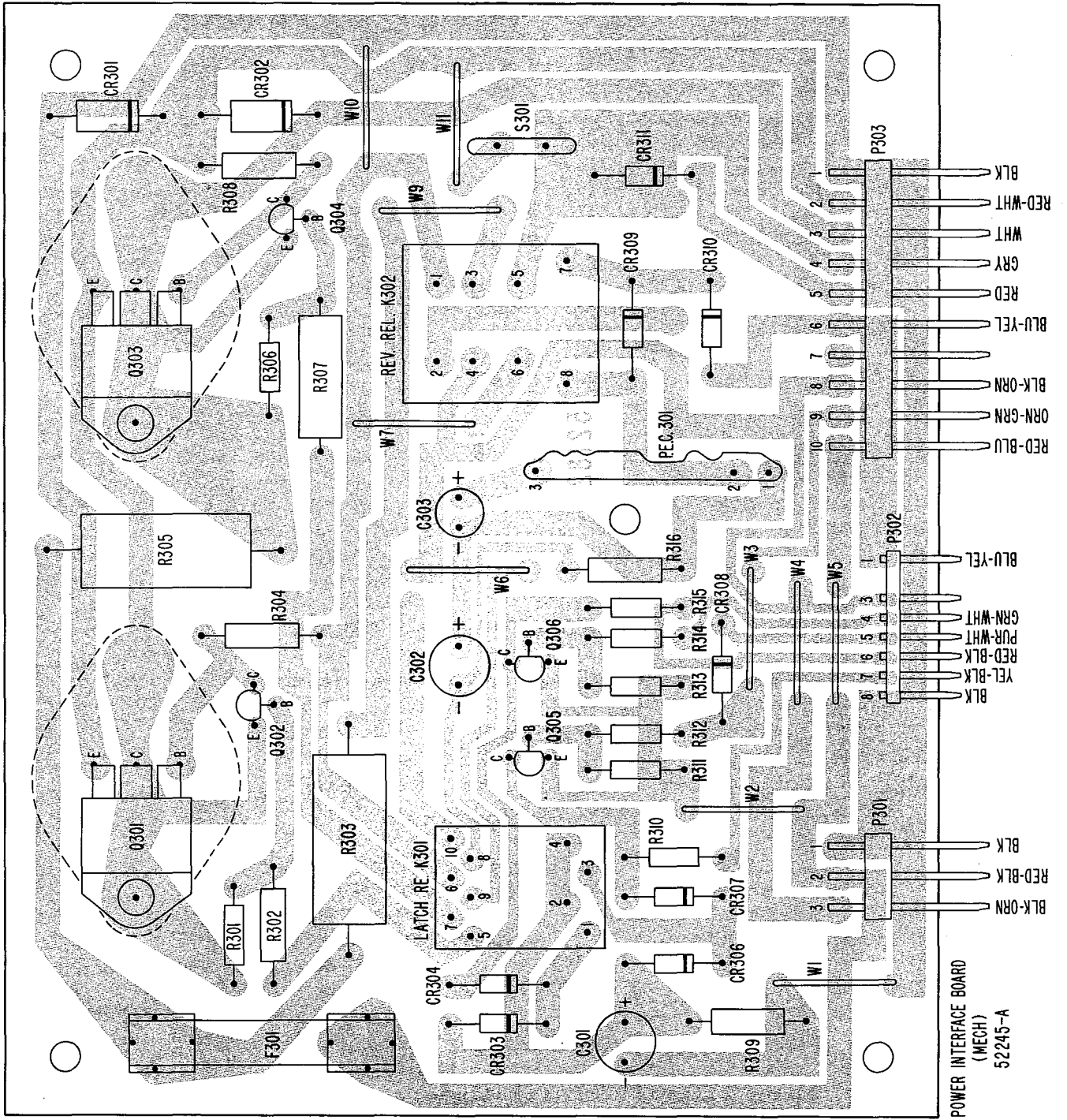
Item	Part No.	Description
RESISTORS		
R801 & R802	52344	330 OHM 1/4W 5%
DIODES		
CR801 & CR802	51498	Diode 1N4148
LED #10 & LED #11	52759	Hi-Intensity Led (Red)
MISCELLANEOUS		
DD801	52388	4 Digit Display
	ST-9843	Caplug - Tapered
	52307	Numeric Display Holder
	ST-7248	Mach. Screw #4-40 x 1/2
	ST-10469	Hex Nut #4-40



RECORD PLAY DISPLAY BOARD
52030-A

RECORD PLAY P.C. BOARD ASSEMBLY NO. 52030-A

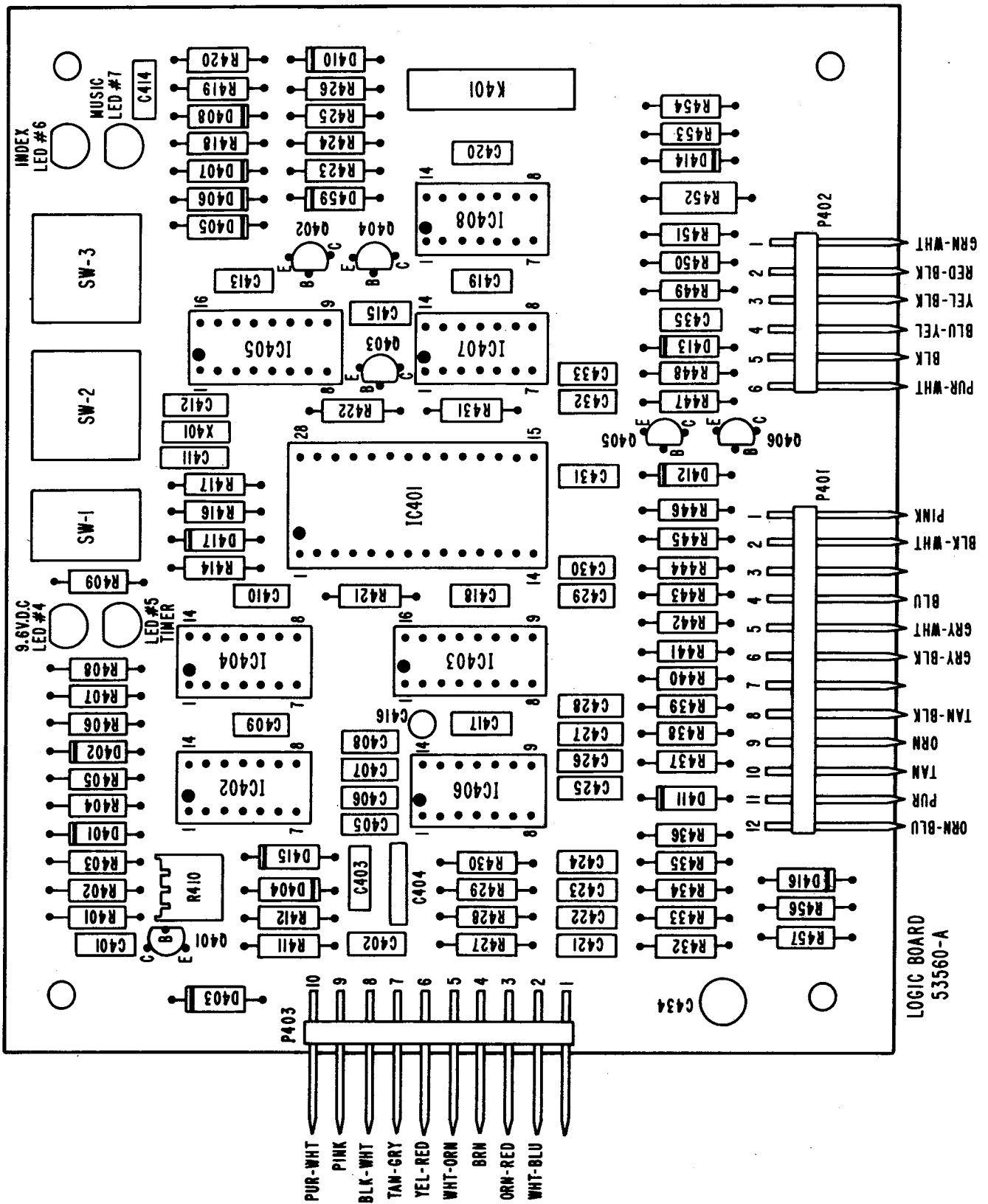
Item	Part No.	Description
RESISTORS		
R901 & R902	5234 4	330 OHM 1/4W 5%
DIODES		
CR901 & CR902	51498	Diode 1N4148
LED #12 & LED #13	52759	Hi-Intensity LED (Red)
MISCELLANEOUS		
DD901	52388 ST-9843 52307 ST-7248 ST-10469	4 Digit Display Caplug — Tapered Numeric Display Holder Mach. Screw #4-40 x 1/2 Hex Nut #4-40



POWER P.C. BOARD ASSEMBLY NO. 52245-A



Item	Part No.	Description	Item	Part No.	Description
RESISTORS					
R301	51293	10K OHM 1/4W 5%	CR301 &		
R302	53008	100 OHM 1W 5% FP	CR302	52552	Transient Voltage Suppressor 51V
R303	43207	5 OHM 5W 10%	CR303	46497	Rectifier 100PRV 1A 1N4002
R304	53008	100 OHM 1W 5% FP	CR304	50714	Fast Recovery Diode 1N4934
R305	43207	5 OHM 5W 10%			
R306	51293	10K OHM 1/4W 5%	CR306	46497	Rectifier 100PRV 1A 1N4002
R307	35328	1.5K OHM 1W 5%	CR307	50714	Fast Recovery Diode 1N4934
R308	53008	100 OHM 1W 5% FP	CR308 &		
R309	53008	100 OHM 1W 5% FP	CR309	46497	Rectifier 100PRV 1A 1N4002
R310	51566	1.5 OHM 1/4W 5%	CR310	50714	Fast Recovery Diode 1N4934
R311	51293	10K OHM 1/4W 5%	CR311	46497	Rectifier 100PRV 1A 1N4002
R312	48043	4.7K OHM 1/4W 10%			
R313	51293	10K OHM 1/4W 5%			
R314	51384	2.7K OHM 1/4W 5%			
R315	51566	1.5K OHM 1/4W 5%			
R316	53008	100 OHM 1W 5% FP			
CAPACITORS					
C301 &			K301	52547	Latch Relay 24V
C302	52361	47 MFD +50-10% 50V		52548	Relay Socket - 10 Pin
C303	52558	22 MFD 10% 10V	K302	47472	Relay Hold Down Spring
				52321	24V - 2 PDT Relay
				52320	Relay Socket - 8 Pin
				52322	Relay Retainer Spring
TRANSISTORS					
Q301	52549	Power (NPN) TIP 3055	F301	ST-10703	Fuse Slo-Blo 0.5A 250V
	ST-6577	Mach. Screw #4-40 x 1/4	PEC301	51984	P.C. Fuse Clip
	ST-10469	Hex Nut #4-40	P301	52356	P.E.C. Delay Circuit
Q302	47831	(PNP) MPS-A56	P302	ST-10612	3 Ckt. Right Angle Post Connector
Q303	52549	Power (NPN) TIP 3055	P303	ST-10594	7 Ckt. C.I.S. Right Angle Pin Header
	ST-6577	Mach. Screw #4-40 x 1/4	S301	ST-10593	10 Ckt. Right Angle Post Connector
Q304 thru	ST-10469	Hex Nut #4-40		52551	Metal Oxide Varistor
Q306	47831	(PNP) MPS-A56			
DIODES AND RECTIFIERS					
RELAYS					
MISCELLANEOUS					



LOGIC P.C. BOARD ASSEMBLY No. 53560-A



Item	Part No.	Description	Item	Part No.	Description	Item	Part No.	Description
RESISTORS								
Note: All resistors are 1/4 Watt 5% tolerance.								
R401	51292	4.7K Ohm	R430	51294	47K Ohm	C401	53301	.027 Mfd 50 WVDC 10%
R402	51293	10K Ohm	R431	51293	10K Ohm	C402	53302	.01 Mfd 50 WVDC 10%
R403	49268	33K Ohm	R432	51294	47K Ohm	C403	53302	.01 Mfd 50 WVDC 10%
R404	52358	2.2K Ohm	R433	51293	10K Ohm	C404	52799	.47 Mfd 100 WVDC 10%
R405	49268	33K Ohm	R434	51294	47K Ohm	C405	52399	.1 Mfd 50 WVDC 10%
R406	50966	100K Ohm	R435	51293	10K Ohm	C406	53302	.01 Mfd 50 WVDC 10%
R407	51293	10K Ohm	R436	51294	47K Ohm	C407	53301	.027 Mfd 50 WVDC 10%
R408	52563	560 Ohm	R437	51564	1K Ohm	C408	53299	.1 Mfd 50 WVDC 10%
R409	52563	560 Ohm	R438	51564	1K Ohm	C409	53299	.1 Mfd 50 WVDC 10%
R410	52757	50K Ohm Trim Control	R439	51293	10K Ohm	C410	53299	.1 Mfd 50 WVDC 10%
R411	52358	2.2K Ohm	R440	51294	47K Ohm	C411	53604	470 P.F. 50 WVDC 5%
R412	51291	22K Ohm	R441	51384	2.7K Ohm	C412	53327	100 Mmfd 63 WVDC 5%
R414	53593	470K Ohm	R442	51564	1K Ohm	C413	53299	.1 Mfd 40 WVDC 10%
R416	52734	1M Ohm	R443	51293	10K Ohm	C414	53299	.1 Mfd 50 WVDC 10%
R417	51293	10K Ohm	R444	51292	4.7K Ohm	C415	53302	.01 Mfd 50 WVDC 10%
R418	51564	1K Ohm	R445	51293	10K Ohm	C416	52359	1.0 Mfd 35 WVDC 10%
R419	50966	100K Ohm	R446	51293	10K Ohm	C417	53299	.1 Mfd 50 WVDC 10%
R420	51564	1K Ohm	R447	51293	10K Ohm	thru		
R421	51294	47K Ohm	R448	51293	10K Ohm	C420	53299	.1 Mfd 50 WVDC 10%
R422	51293	10K Ohm	R449	51566	1.5K Ohm	C421	53302	.01 Mfd 50 WVDC 10%
R423	51293	10K Ohm	R450	51566	1.5K Ohm	thru		
R424	51292	4.7K Ohm	R451	51384	2.7K Ohm	C424	53302	.01 Mfd 50 WVDC 10%
R425	51293	10K Ohm	R452	46943	820 Ohm	C425	53299	.1 Mfd 50 WVDC 10%
R426	51291	22K Ohm	R453	49267	56K Ohm	C426	53302	.01 Mfd 50 WVDC 10%
R427	51293	10K Ohm	R454	51564	1K Ohm	thru		
R428	51294	47K Ohm	R455	50966	100K Ohm	C430	53302	.01 Mfd 50 WVDC 10%
R429	51293	10K Ohm	R456	51294	47K Ohm	C431	53299	.1 Mfd 50 WVDC 10%
			R457	51294	47K Ohm	C432	53302	.01 Mfd 50 WVDC 10%
						C433	53302	.01 Mfd 50 WVDC 10%
						C434	52362	100 Mfd 40 WVDC
						C435	53299	.1 Mfd 50 WVDC 10%

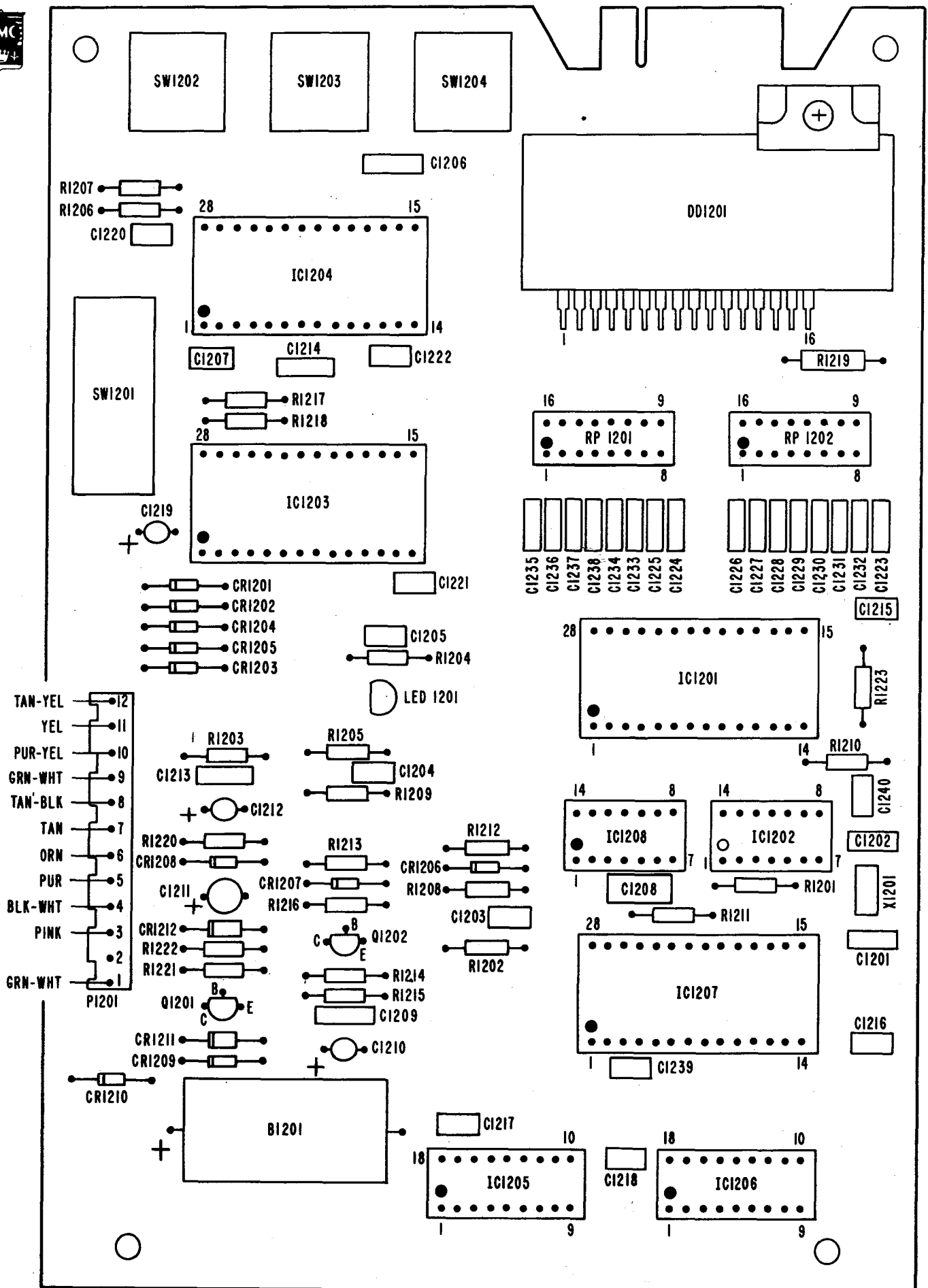
CONTINUED NEXT PAGE



LOGIC P.C. BOARD ASSEMBLY No. 53560-A — Continued

Item	Part No.	Description	Item	Part No.	Description	Item	Part No.	Description
DIODES AND RECTIFIERS								
D401	51498	Diode (IN4148)	Q401	49415	A06 (NPN)	K401	52738	Reed Relay 24V (31441241)
D402	51498	Diode (IN4148)	Q402	47831	A56 (PNP)	SW1	52727	Min. Slide Switch S.P.D.T.
D403	46497	Rect. 100 PRV 1A (IN4002)	Q403	49415	A06 (NPN)	SW2	52725-6	Key Switch — Blue
D404	51498	Diode (IN4148)	thru			SW3	52725-2	Key Switch — Red
D408	51498	Diode (IN4148)	Q406	49415	A06 (NPN)			
D410	53603	Zener Diode 7.5V 1W (IN4737A) 5%						
D411	46497	Rect. 100 PRV 1A (IN4002)						
D412	46497	Rect. 100 PRV 1A (IN4002)						
D413	51498	Diode (IN4148)						
thru								
D417	51498	Diode (IN4148)	IC401	51726	Mech Controller (MM5799NAX)	X401	53372	Resonator
D459	51498	Diode (IN4148)	IC402	52560	Dual Timer	P401	ST-10607	12 Crt. Right Angle Post Connector
LED #4	51994	1/4 Dia. Led — Red	IC403	52546	Tri-State Buffer-Hex	P402	ST-10573	6 Crt. Right Angle Post Connector
thru			IC404	51993	4069 Hex Inverter	P403	ST-10593	10 Crt. Right Angle Post Connector
LED #7	51994	1/4 Dia. Led — Red	IC405	53357	Hex Buffer 4050			
			IC406	53338	Hex Schmitt Trigger (74C14)			
			IC407	53602	Quad 2 Input AND Gate (4081)			
			IC408	53601	Quad 2 Input NAND Gate (4011)			
TRANSISTORS								
RELAYS AND SWITCHES								
MISCELLANEOUS								
INTEGRATED CIRCUITS								



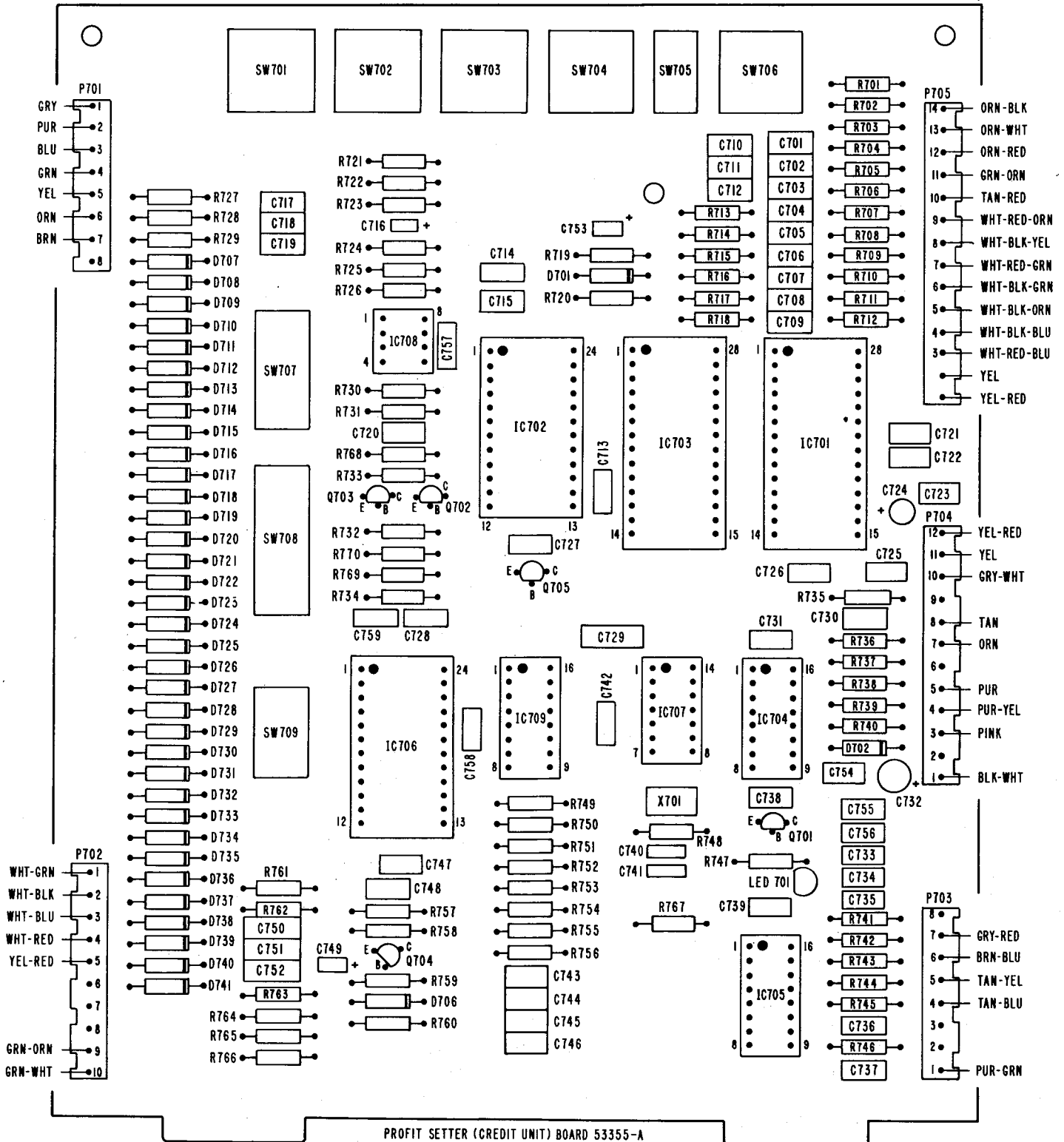


HIT TRACKER (POP METER) BOARD 53365-A



HIT TRACKER P.C. BOARD ASSEMBLY No. 53365-A
(Popularity Meter)

Item	Part No.	Description	Item	Part No.	Description
RESISTORS					
Note: All resistors are 1/4 Watt 5% tolerance unless otherwise noted.					
R1201	52743	1M Ohm	C1222	53299	.1 Mfd 50 WVDC 10%
R1202	51564	1K Ohm	C1223	33762	470 Mmfd 1K V Ceramic Disc 10%
R1203	51564	1K Ohm	thru		
R1204	51293	10K Ohm	C1238	33762	470 Mmfd 1K V Ceramic Disc 10%
R1205	51564	1K Ohm	C1239	53299	.1 Mfd 50 WVDC 10%
R1206	51293	10K Ohm	C1240	53299	.1 Mfd 50 WVDC 10%
R1207	51293	10K Ohm	DIODES AND TRANSISTORS		
R1208	51294	47K Ohm	CR1201	51498	Diode (IN4148)
R1209	51294	47K Ohm	thru		
R1210	51564	1K Ohm	CR1210	51498	Diode (IN4148)
R1211	51293	10K Ohm	CR1211	52719	IN4735A 62 V 1W Zener Diode 5%
R1212	50966	100K Ohm	CR1212	46497	100 PRV 1Amp (IN4002)
R1213	51293	10K Ohm	Q1201	49415	Transistor MPS-A06 (NPN)
R1214	51291	22K Ohm	Q1202	49415	Transistor MPS-A06 (NPN)
R1215	51571	6.8K Ohm	INTEGRATED CIRCUITS AND RESONATOR		
R1216	51292	4.7K Ohm	IC1201	52133-1	Pop Meter Controller (MM5799NFT)
R1217	51293	10K Ohm	IC1202	51993	4069 Hex Inverter
R1218	51293	10K Ohm	IC1203	52524	Display Controller (MM57163)
R1219	53003	10 Ohm 1 Watt 5% F.P.	IC1204	52524	Display Controller (MM57163)
R1220	51292	4.7K Ohm	IC1205	52134	1024 x 1 CMOS RAM (HM 6518)
R1221	52358	2.2K Ohm	IC1206	52134	1024 x 1 CMOS RAM (HM 6518)
R1222	52563	560 Ohm	IC1207	52537	CMOS RAM Interface (MM5785N)
R1223	51293	10K Ohm	IC1208	53338	Hex Schmitt Trigger (74C14)
CAPACITORS					
C1201	53327	100 Mmfd NPO 63 V Ceramic 5%	X1201	53372	Resonator
C1202	53604	470 Mmfd 50 WVDC 5%	MISCELLANEOUS		
C1203	53302	.01 Mfd 50 WVDC 10%	SW1201	53336	Slide Switch DP3T Miniature
C1204	53302	.01 Mfd 50 WVDC 10%	SW1202	52725-6	Key Switch - Blue
C1205	53302	.01 Mfd 50 WVDC 10%	SW1203	52725-8	Key Switch - Gray
C1206	45790	.001 Mfd 500VDC Ceramic Disc 10%	SW1204	52725-2	Key Switch - Red
C1207	53299	.1 Mfd 50 WVDC 10%	DD1201	52556	5 Digit Vacuum Display
C1208	52799	.47 Mfd 100 WVDC 5%		52307	Numeric Display Holder
C1209	45790	.001 Mfd 500 VDC Ceramic Disc 10%		ST-7248	Mach Screw #4-40 x 1/2 Pan Hd
C1210	49416	2.2 Mfd 25 WVDC 20%	B1201	52726	Litium Battery
C1211	52561	10 Mfd 15V Tantalum 10%	P1201	ST-10654	12 Cir Post Connector
C1212	49146	2.2 Mfd 25 WVDC 20%	RP1201	53324	Resistor Pack 1K Ohm (8 Single)
C1213	45790	.001 Mfd 500 VDC Ceramic Disc 10%	RP1202	53324	Resistor Pack 1K Ohm (8 Single)
C1214	45790	.001 Mfd 500 VDC Ceramic Disc 10%			
C1215	53299	.1 Mfd 50 WVDC 10%			
C1216	53299	.1 Mfd 50 WVDC 10%			
C1217	53299	.1 Mfd 50 WVDC 10%			
C1218	53299	.1 Mfd 50 WVDC 10%			
C1219	49146	2.2 Mfd 25 WVDC 20%			
C1220	53299	.1 Mfd 50 WVDC 10%			
C1221	53299	.1 Mfd 50 WVDC 10%			



PROFIT SETTER (CREDIT UNIT) P.C. BOARD ASSEMBLY No. 53355-A



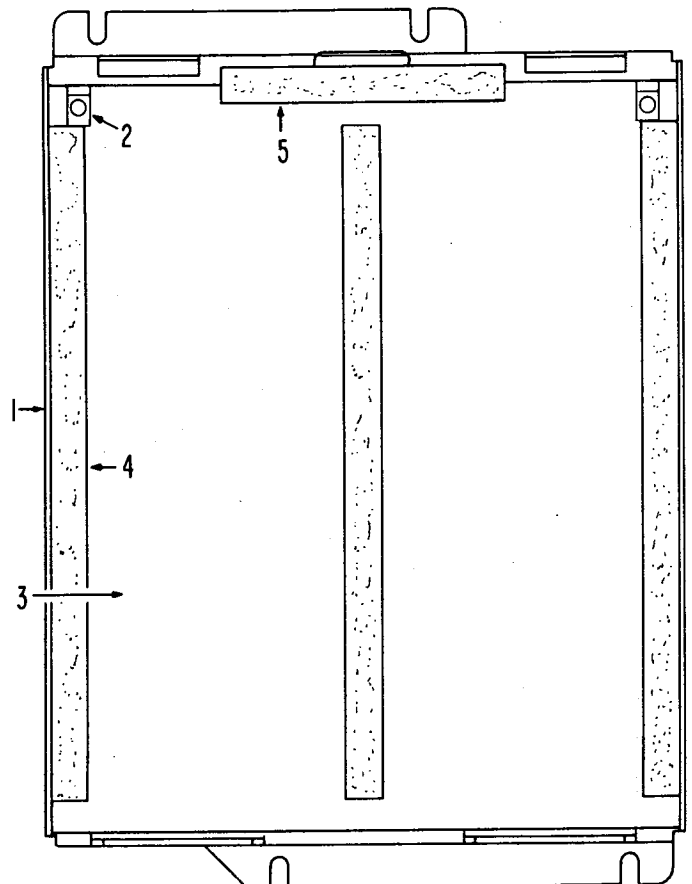
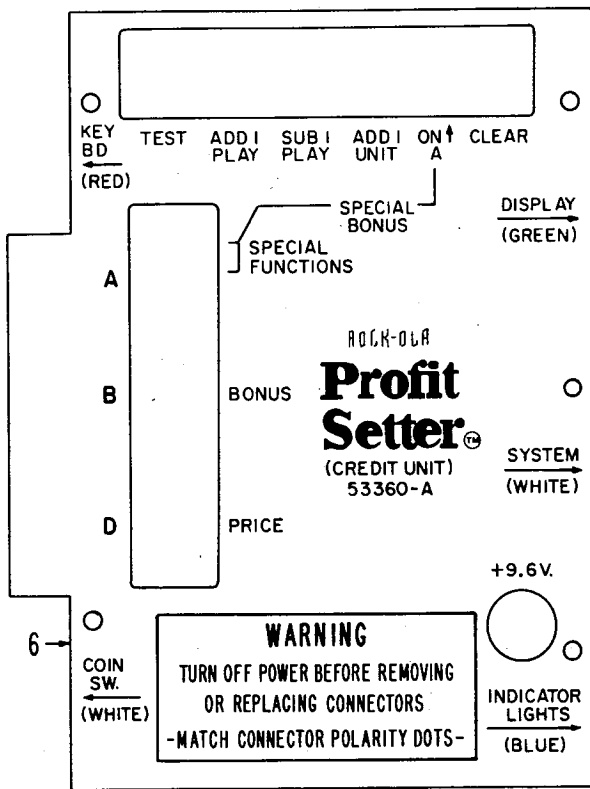
Item	Part No.	Description	Item	Part No.	Description
RESISTORS			CAPACITORS		
Note: All resistors are 1/4 watt 5% tolerance.			C701	33762	470 Mmfd 1000 WVDC 10%
R701	51564	1K Ohm	thru		
thru			C714	33762	470 Mmfd 1000 WVDC 10%
R712	51564	1K Ohm	C715	53302	.01 Mfd 50 WVDC 10%
R713	51293	10K Ohm	C716	53339	4.7 Mfd 16 WVDC 10%
R714	51293	10K Ohm	C717	53301	.027 Mfd 50 WVDC 10%
R715	51291	22K Ohm	C718	53301	.027 Mfd 50 WVDC 10%
thru			C719	53301	.027 Mfd 50 WVDC 10%
R718	51291	22K Ohm	C720	53337	.047 Mfd 50 WVDC 10%
R719	51294	47K Ohm	C721	53299	.1 Mfd 50 WVDC 10%
R720	51291	22K Ohm	C722	53299	.1 Mfd 50 WVDC 10%
R721	51564	1K Ohm	C723	53299	.1 Mfd 50 WVDC 10%
R722	51564	1K Ohm	C724	50647	4.7 Mfd 35 WVDC 20%
R723	51564	1K Ohm	C725	53299	.1 Mfd 50 WVDC 10%
R724	51293	10K Ohm	C726	53299	.1 Mfd 50 WVDC 10%
R725	52734	1 Meg Ohm	C727	53299	.1 Mfd 50 WVDC 10%
R726	51293	10K Ohm	C728	53302	.01 Mfd 50 WVDC 10%
R727	51564	1K Ohm	C729	45790	.001 Mfd 500 WVDC 10%
R728	51564	1K Ohm	C730	33762	470 Mmfd 1K V Ceramic Disc 10%
R729	51564	1K Ohm	C731	53299	.1 Mfd 50 WVDC 10%
R730	51292	4.7K Ohm	C732	50646	10 Mfd 25 WVDC 20%
R731	51293	10K Ohm	C733	53299	.1 Mfd 50 WVDC 10%
R732	51293	10K Ohm	thru		
R733	51294	47K Ohm	C737	53299	.1 Mfd 50 WVDC 10%
R734	52358	2.2K Ohm	C738	53302	.01 Mfd 50 WVDC 10%
R735	51564	1K Ohm	C739	53299	.1 Mfd 50 WVDC 10%
thru			C740	53327	100 Mmfd 63 WVDC 5%
R738	51564	1K Ohm	C741	53604	470 Mmfd 50 WVDC 5%
R739	51293	10K Ohm	C742	53299	.1 Mfd 50 WVDC 10%
R740	52563	560 Ohm	C743	33762	470 Mmfd 1K V Ceramic Disc 10%
R741	51293	10K Ohm	thru		
R742	51289	100 Ohm	C746	33762	470 Mmfd 1K V Ceramic Disc 10%
thru			C747	53299	.1 Mfd 50 WVDC 10%
R746	51289	100 Ohm	C748	53337	.047 Mfd 50 WVDC 10%
R747	51293	10K Ohm	C749	49146	2.2 Mfd 25 WVDC 20%
R748	52734	1 Meg Ohm	C750	53301	.027 Mfd 50 WVDC 10%
R749	49269	33K Ohm	C751	53301	.027 Mfd 50 WVDC 10%
thru			C752	53301	.027 Mfd 50 WVDC 10%
R752	49269	33K Ohm	C753	49146	2.2 Mfd 25 WVDC 20%
R753	51294	47K Ohm	C754	53302	.01 Mfd 50 WVDC 10%
thru			C755	53302	.01 Mfd 50 WVDC 10%
R756	51294	47K Ohm	C756	53302	.01 Mfd 50 WVDC 10%
R757	51291	22K Ohm	C757	53299	.1 Mfd 50 WVDC 10%
R758	51294	47K Ohm	C758	53299	.1 Mfd 50 WDC 10%
R759	51289	100 Ohm	C759	53302	.01 Mfd 50 WVDC 10%
R760	50968	150K Ohm	DIODES AND TRANSISTORS		
R761	51564	1K Ohm	D701	51498	Diode (IN4148)
thru			D702	46497	100 PRV 1 Amp Mini (IN4002)
R766	51564	1K Ohm	D703		
R767	51293	10K Ohm	thru	Not Used	
R768	51294	47K Ohm	D705		
R769	51293	10K Ohm			
R770	51291	22K Ohm			

MORE ON NEXT PAGE

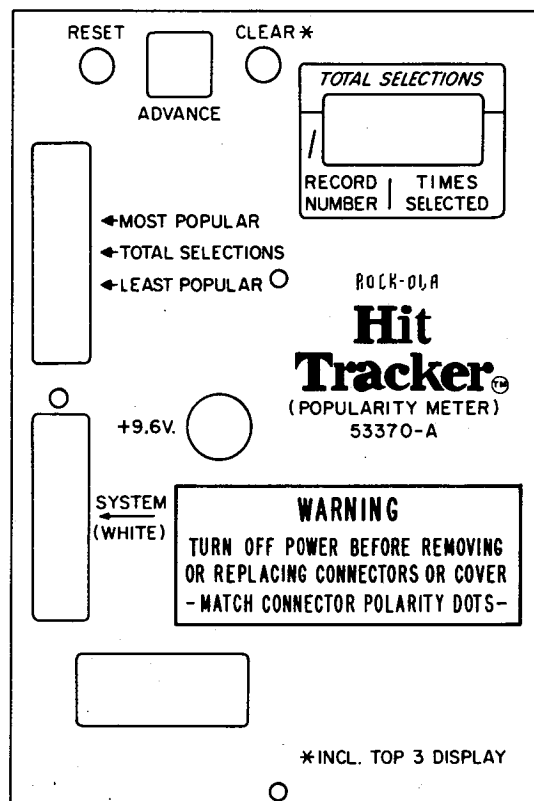
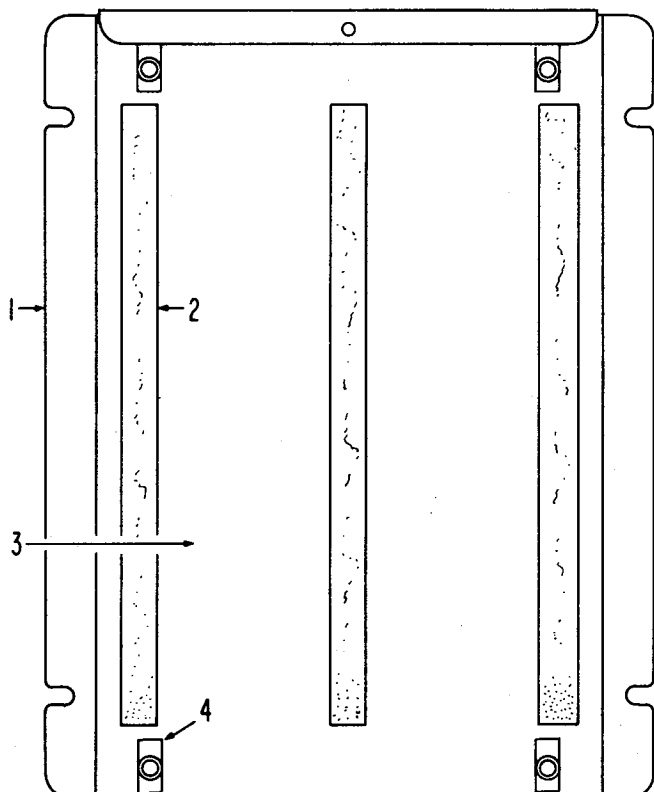


PROFIT SETTER PARTS — Continued

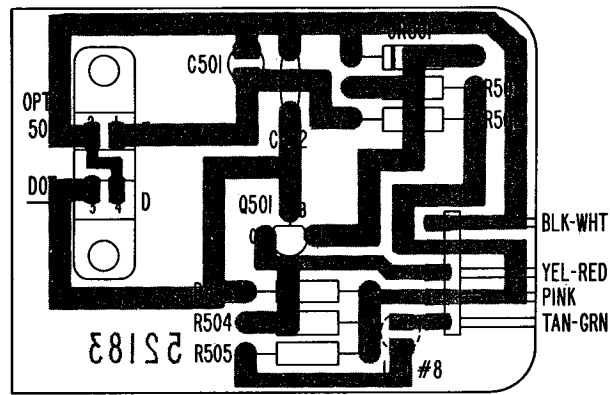
Item	Part No.	Description	Item	Part No.	Description
DIODES AND TRANSISTORS			IC709	53357	Hex Buffer (4050)
D706	51498	Diode (IN4148)	SWITCHES		
D707	51498	Diode (IN4148)	SW701	52725-6	Key Switch — Blue
thru			SW702	52725-9	Key Switch — White
D741	51498	Diode (IN4148)	SW703	52725	Key Switch — Black
Q701	49415	Transistor MPS-A06 (NPN)	SW704	52725-8	Key Switch — Gray
Q702	49415	Transistor MPS-A06 (NPN)	SW705	52727	Mini Slide Switch SPDT
Q703	49415	Transistor MPS-A06-(NPN)	SW706	52725-2	Key Switch — Red
Q704	48063	Transistor NPN 2N5307	SW707	51304	8 Station Dip Switch SPST
Q705	47831	Transistor MPSA56 (PNP)	SW708	52606	10 Station Dip Switch SPST
INTEGRATED CIRCUITS			SW709	51303	6 Station Dip Switch SPST
IC701	52524	Display Controller (MM57163N)	MISCELLANEOUS		
IC702	52150	Credit ROM (MM5781NCY)	P701	49275	8 Circuit Post Connector
IC703	52151	Credit Controller (MM5782N)	P702	49276	10 Circuit Post Connector
IC704	52546	Tri-State Buffer-Hex (MM80C97N)	P703	49275	8 Circuit Post Connector
IC705	52539	Shift Register (DS3654N)	P704	ST-10654	12 Circuit Post Connector
IC706	52544	Decoder (DS8664N)	P705	ST-10577	14 Circuit Post Connector
IC707	51993	4069 Hex Inverter	LED701	51994	LED — Red
IC708	53358	Programmable Timer (XR2242)	X701	53372	Resonator



1	53544-A	Unit Mtg. Plate Riveting Assem.	4	50267	Rubber Cushion 7-3/8" Lg.
2	ST-10727	Circuit Board Support	5	47036	Foam Cushion 3-3/8" Lg.
3	53354	Credit Board Insulator	6	53352	Credit Unit Cover



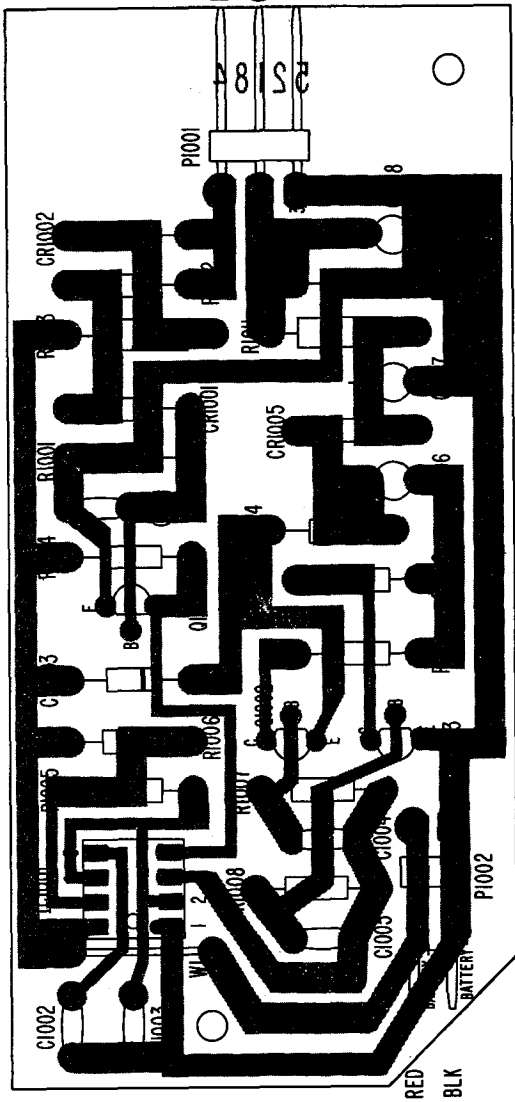
Item	Part No.	Description	Item	Part No.	Description
1	52427	Unit Mtg. Plate	4	ST-10657	Circuit Board Support
2	45816	Rubber Cushion 6-1/4"	5	52428-1	Pop Meter Cover
3	52608	Credit Board Insulator			



OPTO BOARD
52250-A

OPTO P.C. BOARD ASSEMBLY NO. 52250-A

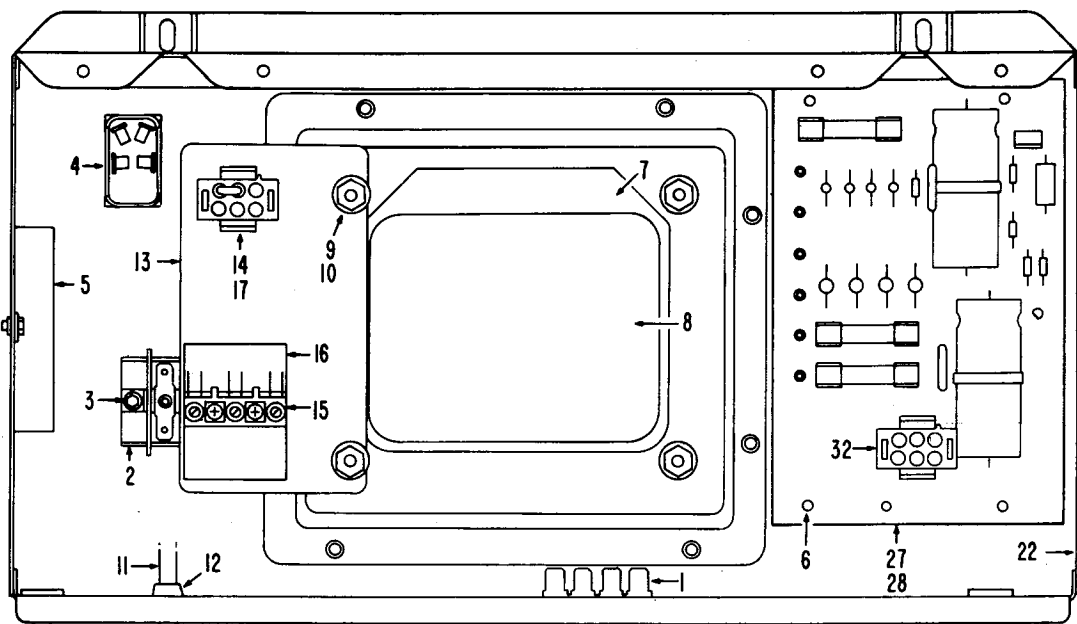
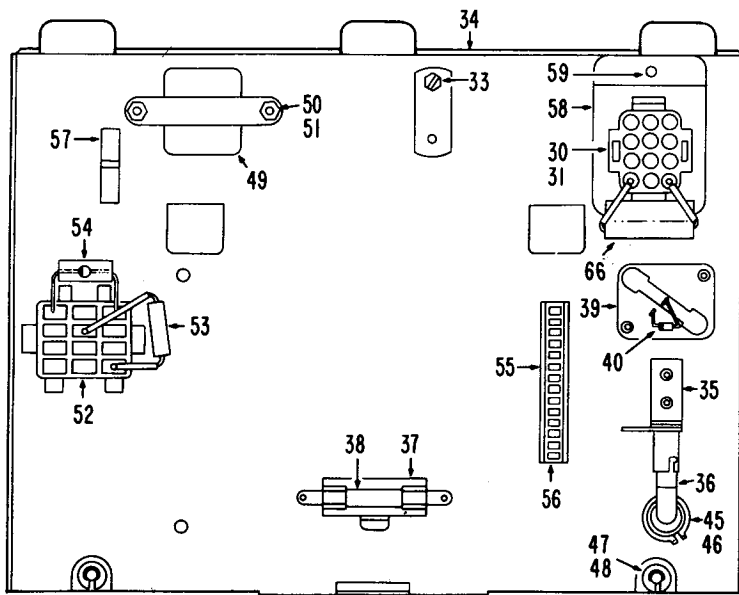
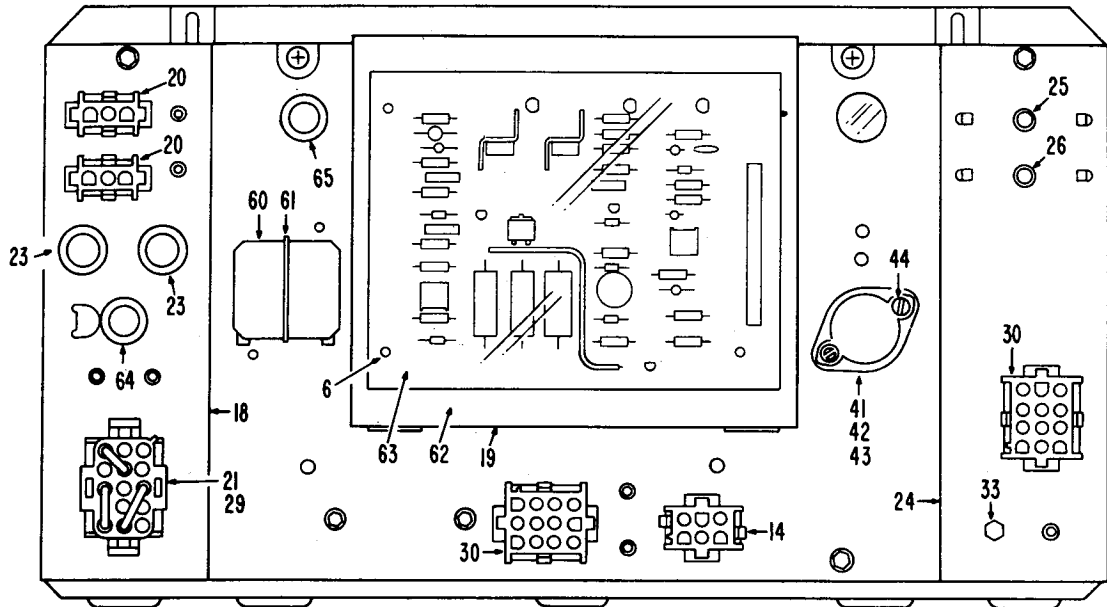
Item	Part No.	Description
RESISTORS		
R501	52377	390 OHM 1/4W 5%
R502	49269	27K OHM 1/4W 5%
R503	51293	10K OHM 1/4W 5%
R504	51292	4.7K OHM 1/4W 5%
R505	52563	560 OHM 1/4W 5%
CAPACITORS		
C501	52561	10 MFD 10% 15V
C502	33762	470 MMFD 10% 1000V
DIODES AND TRANSISTORS		
CR501	51498	Diode 1N4148
LED #8	51994	(1/4 Dia.) LED (Red)
Q501	45747	Transistor (NPN) 2N4424
MISCELLANEOUS		
OPTO 501	52562	Opto-Interruptor
P501	ST-10572	4 Ckt. CIS Right Angle Pin Header



BATTERY P.C. BOARD ASSEMBLY NO. 52255-A

Item	Part No.	Description	Item	Part No.	Description
RESISTORS					
R1001	52358	2.2K OHM 1/4W 5%	Q1001	45747	(NPN) 2N4424
R1002	49264	470 OHM 1/4W 5%	Q1002	47831	(PNP) MPS-A56
R1003	53002	27 OHM 1W 5% FP	Q1003	45747	(NPN) 2N4424
R1004	51293	10K OHM 1/4W 5%	DIODES AND RECTIFIERS		
R1005	52621	68K OHM 1/4W 5%	CR1001	52719	Zener 1W, 8.2V 5% 1N4738A
R1006	52358	2.2K OHM 1/4W 5%	CR1002	46497	Rectifier 100 PRV 1A 1N4002
R1007	47832	5.6K OHM 1/4W 10%	CR1003 thru		
R1008	51293	10K OHM 1/4W 5%	CR1005	50714	Fast Recovery Diode 1N4934
R1009 &			INTEGRATED CIRCUITS		
R1010	53001	4.7 OHM 1W 5% FP	IC1001	51991	555 Timer
R1011	53003	10 OHM 1W 5% FP	MISCELLANEOUS		
R1012	51291	22K OHM 1/4W 5%	F1001	ST-10694	.5 Amp. 125 V Sub-Min Fuse
CAPACITORS					
C1001 thru			P1001	ST-10612	3 Ckt. Right Angle Post Connector
C1005	45790	.001 MFD 10% 500V	P1002	ST-10630	2 Ckt. Right Angle Post Connector
C1006 thru					
C1008	52561	10 MFD 10% 15V			



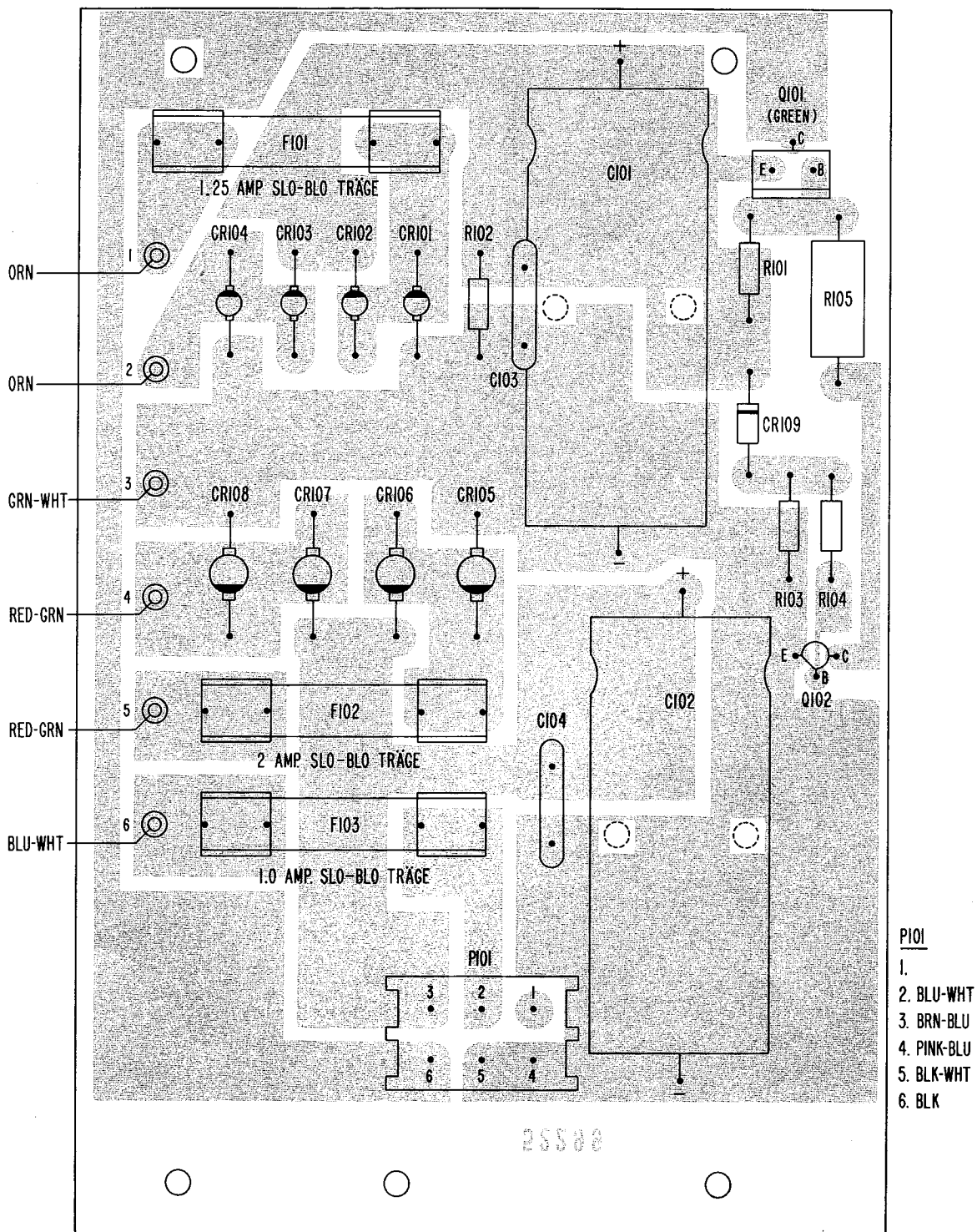


POWER DISTRIBUTION ASSEMBLY



**120 Volt 60HZ USA—52390-A, 120 Volt 60HZ Canada—52395-A
 100 Volt 60HZ Japan—52400-A, 220 Volt 50HZ Germany—52405-A
 220 Volt 50HZ Belgium—52405-A, 240 Volt 50HZ—England—52415-A
 240 Volt 50HZ Australia—52410-A**

Item	Part No.	Description	Item	Part No.	Description
1	ST-10627	Ground Terminal Strip	29	52666-A	15 Circuit Universal Pin Hsg. Assy. (Wht)
2	49242	Terminal Block			U.S.A. - Canada - Japan
3	ST-2560	6-32 x 5/8 Hex Flg. Whiz Lock		52667-A	15 Circuit Universal Pin Hsg.
	ST-8715	6-32 Hex Whiz Lock Nut			Assem. (Blue) Germany-Belgium-England-Australia
4	49313	DPST Toggle Switch	30	ST-10502	12 Circ. Universal Socket Hsg.
	49240	Rocker Switch - (Germany)	31	ST-10503	12 Circ. Universal Pin Hsg.
5	52714-A	4 Amp RFI Filter Assembly - Germany	32	ST-10567	6 Circ. Universal Pin Hsg.
6	ST-10538	Plastic Board Support	33	ST-10062	8-36 x 5/16 Hex Hd. M.S. (Green Hd)
7	52434	Transformer Gasket	34	52656-A	P.D. Front Panel Rivet Assem.
8	52693-A	Power Transformer Assembly	35	52631	Light Socket
	52435	Power Transformer Only	36	ST-10600	Type #1829 Lamp
	52693-CA	Power Transformer Assy. - Canada	37	49307	Fuse Holder
	52435-C	Power Transformer Only - Canada	38	ST-4323	8/10 Amp Slo-Blo Fuse
9	ST-8722	10-32 Hex Flg. Whiz Lock Nut	39	52649	TO-3 Transistor Socket
10	ST-9823	Tapered Caplug	40	46497	100 P.R.V. 1 Amp Rectifier
11	52694-A	Line Cord Assembly - U.S.A.	41	48098	Insulator - Power Transistor
	51251	3 Conductor Cord Set - (German/Belgium)	42	52529	Adjustable Regulator
	47833	3 Conductor Cord - England	43	52651	TO-3 Insulating Cover
	47862	3 Conductor Cord - Australia	44	ST-10462	6 x 5/8 Pan Hd. (Type B) Sc.
12	ST-6904	Strain Relief	45	52652	Plastic Lens
	49241	Strain Relief - Germany	46	ST-10641	Retaining Ring
13	52447	Socket Mtg. Plate	47	ST-8266	8-32 x 5/16 Pan Hd. Swageform
14	ST-10568	6 Circ. Universal Socket Housing	48	ST-9263	Retaining Ring
15	47827	3 Pole Input Terminal - Germany	49	52658-A	Display Transformer Assy.
16	19007	Input Terminal Insulator - Germany		52474	Display Filament Transformer Only
17	52668-A	6 Circ. Universal Pin Hsg. Assem.	50	ST-2556	6-32 x 5/16 Hex Flg. Whiz Lock
		U.S.A. - Canada	51	ST-3453	6-32 Hex Nut
	52669-A	6 Circ. Universal Pin Hsg. Assem.	52	49258	Relay Socket
		Germany - Belgium	53	46769	2 OHM 2 Watt Resistor
	52670-A	6 Circ. Universal Pin Hsg. Assem.	54	47972	200 PRV 1.5 Amp Rectifier
		Australia - England	55	ST-10628	14 Circ. Snap-In Header
	52671-A	6 Circ. Universal Pin Hsg. Assem.	56	49292	14 Circ. Post Housing
		Japan	57	ST-10296	Cable Fastener
18	52596-A	P.D. Fuse Plate Weld Assembly	58	52448	Socket Mtg. Bracket
		U.S.A. - Canada - Japan	59	ST-8267	8 x 1/4 Hex Flg. Swageform
	52596-GA	P.D. Fuse Plate Weld Assembly	60	49257	Relay 3 P.D.T. 24 VDC
		Germany-Belgium-England-Australia	61	49259	Relay Hold Down Spring
19	52449	Front Panel Cover	62	52567	Insulator - Regulator Board
20	ST-10589	3 Circ. Universal Socket Hsg. Wht.	63	52350-A	Regulator P.C. Board Assem.
21	ST-10500	15 Circ. Universal Socket Hsg. (Wht)	64	49447	Fuse Holder - U.S.A.
		U.S.A. - Canada - Japan		ST-9631	5 Amp 250V Slo-Blo Fuse
	ST-10500-6	15 Circ. Universal Socket Hsg. (Blue)		49250	Shock-Safe Fuseholder - Germany
		Germany-Belgium-England-Australia		ST-3090	3 Amp 250V Slo-Blo Fuse - Germany
22	52691-A	P.D. Chassis Rivet Assy.		52023 -A	Fuse Holder Assem. - Canada
23	ST-9843	Tapered Caplug #5		49687	5 Amp Fuse, Iron G MQ - Canada
24	52597-A	P.D. Circuit Breaker Plate Weld Assy.	65	49250	Shock-Safe Fuseholder
25	52792	.93 Amp Circuit Breaker		ST-4330	1/4 Amp Slo-Blo Fuse
26	49260	3 Amp Circuit Breaker		53029 A	Fuseholder Assem. - Canada
27	52408	Rectifier Board Insulator		ST-10695	.25 Amp Slo-Blo G MQ Fuse - Canada
28	52355-A	Rectifier P.C. Board Assembly	66	52763	.1 MFD 125 VAC Capacitor



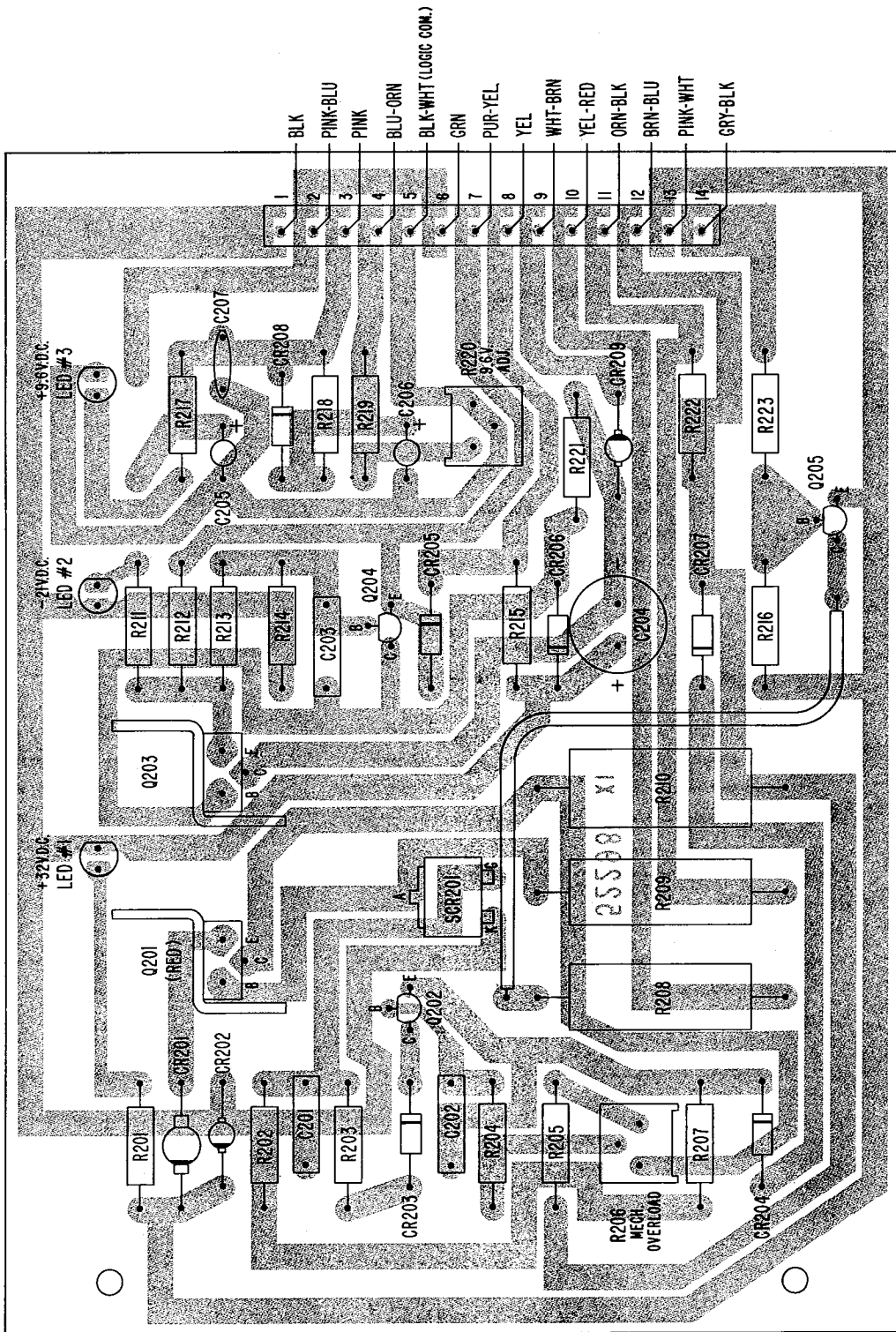
RECTIFIER BOARD
52355-A

- P101
- 1.
 2. BLU-WHT
 3. BRN-BLU
 4. PINK-BLU
 5. BLK-WHT
 6. BLK



RECTIFIER P.C. BOARD ASSEMBLY NO. 52355-A

Item	Part No.	Description
RESISTORS		
R101 thru R103	51292	4.7K OHM 1/4W 5%
R104	51293	10K OHM 1/4W 5%
R105	35446	1K OHM 1W 5%
CAPACITORS		
C101	52653	2500 MFD +50-10% 35V
C102	45734	1200 MFD +50-10% 50V
C103& C104	52889	.1 MFD 20% 100V
TRANSISTORS		
Q101	48932-2	PWR Tab (PNP) GRN
Q102	48063	Darlington (NPN) 2N5307
DIODES AND RECTIFIERS		
CR101 thru CR104	47972	Rectifier Glass 200 PRV 1.5A
CR105 thru CR108	48214	Rectifier Glass 200 PRV 3A
ZCR101 or CR109	52559	Zener 1W 11V 5% 1N4741A
FUSES		
F101	ST-9602	1.25 AMP Slo-Blo 250V
F102	ST-9600	2 AMP Slo-Blo 250V
F103	ST-4332 51984	1 AMP Slo-Blo 250V P.C. Fuse Clip
MISCELLANEOUS		
P101	ST-10585 44784-1	6 Ckt. Univ. Pin Header P.C. Pin .093 Dia.



REGULATOR BOARD
52350-A

REGULATOR P.C. BOARD ASSEMBLY NO. 52350-A

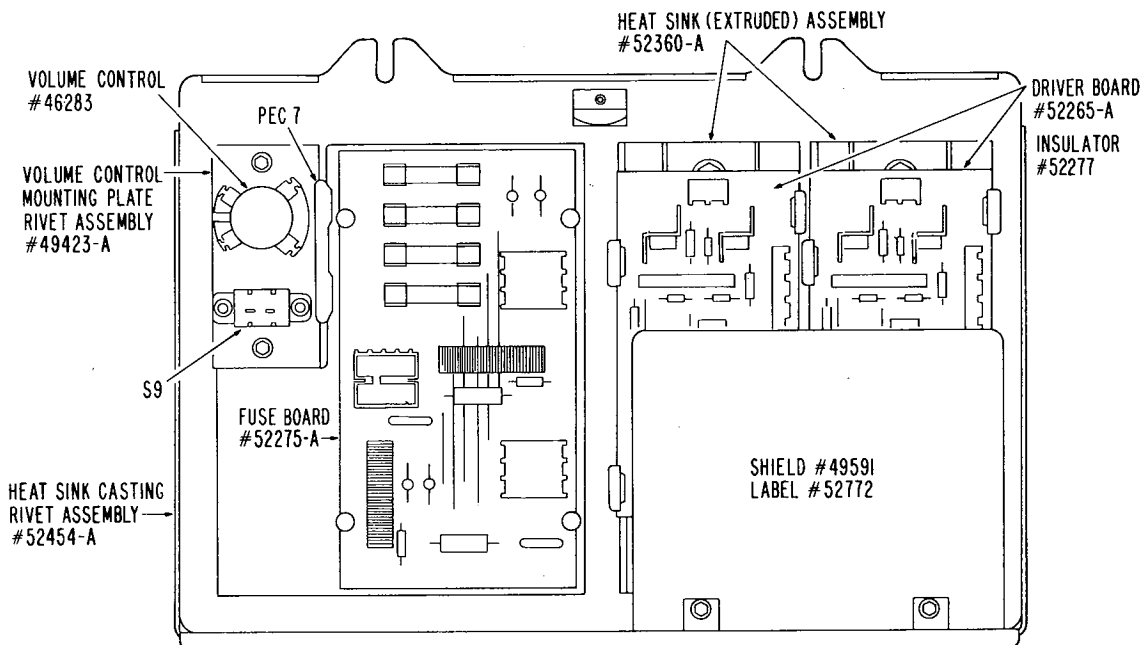
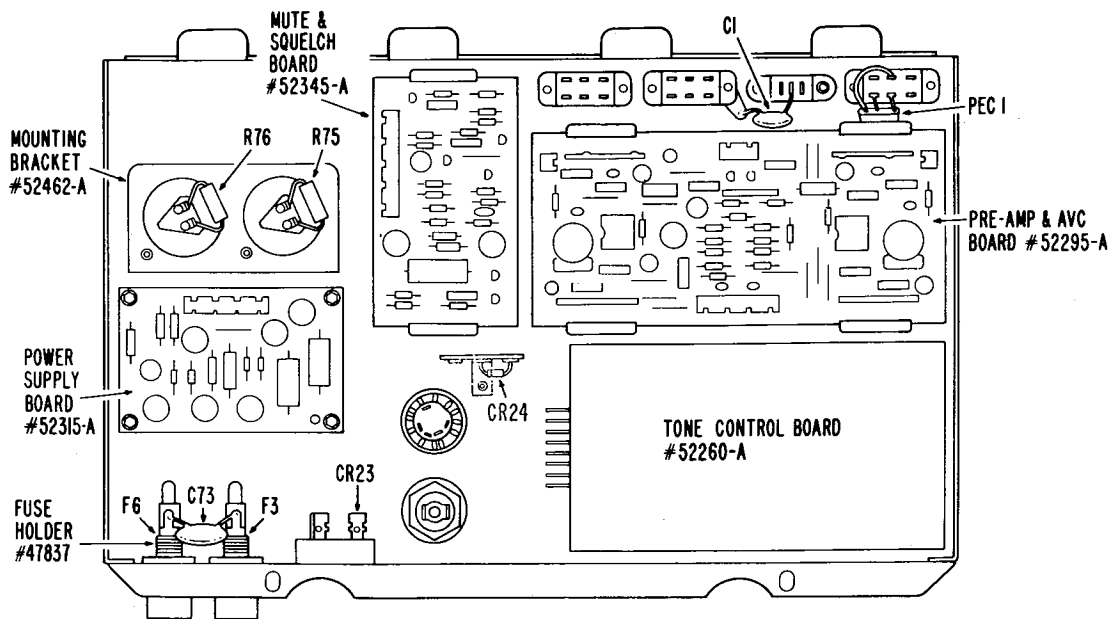
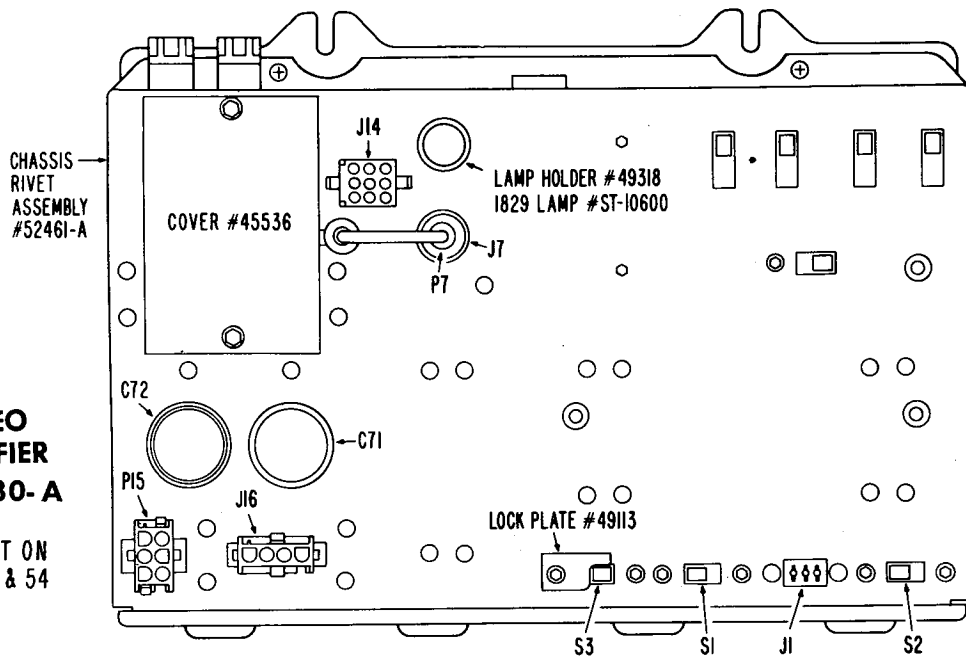
Item	Part No.	Description	Item	Part No.	Description
RESISTORS					
R201	31373	3.3K OHM 1/2W 10%	Q201	52592	Darlington (NPN) D44E2
R202 &				51631-2	Heat Sink
R203	16224	1K OHM 1/2W 10%		ST-10318	Mach. Screw #4-40 x 5/16
R204	31373	3.3K OHM 1/2W 10%		ST-9430	Washer, Fiber
R205	33472	100 OHM 1/2W 5%		ST-10469	Hex Nut #4-40
R206	52602	Trim Control 100 OHM	Q202	47831	(PNP) MPS-A56
R207	16226	4.7K OHM 1/2W 10%	Q203	52593	Darlington (PNP) TIP 115
R208 &				51631-2	Heat Sink
R209	47059	120 OHM 5W 10%		ST-10318	Mach. Screw #4-40 x 5/16
R210	43517	.56 OHM 5W 5%		ST-9430	Washer, Fiber
R211	18659	1.8K OHM 1/2W 5%		ST-10469	Hex Nut #4-40
R212	53011	15 OHM 1W 10% FP	Q204 &		
R213	16224	1K OHM 1/2W 10%	Q205	47831	(PNP) MPS-A56
R214	30579	15K OHM 1/2W 10%	DIODES AND RECTIFIERS		
R215	13182	2.7K OHM 1/2W 10%	CR201	48214	Rectifier Glass 200 PRV 3A
R216	35331	10K OHM 1/2W 5%	CR202	47972	Rectifier Glass 200 PRV 1.5A
R217	42908	750 OHM 1/2W 5%	CR203	48101	Zener 1W 5.6V 5% 1N4734A
R218	35696	270 OHM 1/2W 5%	CR204	46497	Rectifier 100 PRV 1A 1N4002
R219	46249	1.2K OHM 1/2W 5%	CR205	52601	Zener 1W 4.3V 5% 1N4731A
R220	52603	Trim Control 1K OHM	CR206	52594	Zener 1W 22V 5% 1N4748A
R221	16225	3.9K OHM 1/2W 10%	CR207 &		
R222	31373	3.3K OHM 1/2W 10%	CR208	46497	Rectifier 100 PRV 1A 1N4002
R223	13182	2.7K OHM 1/2W 10%	CR209	47972	Rectifier Glass 200 PRV 1.5A
CAPACITORS					
C201	47422	.047 MFD 20% 250V	SCR201	47433	Silicon Control Rectifier
C202 &			LED #1 thru		
C203	51989	.01 MFD 5% 250V	LED #3	52759	High-Intensity LED (Red)
C204	52706	100 MFD +50-10% 50V	MISCELLANEOUS		
C205	52736	33 MFD 10% 25V			
C206	49146	2.2 MFD 20% 25V			
C207	50104	.0022 MFD 10% 250V			
				ST-10629	14 Circuit MODU Receptacle

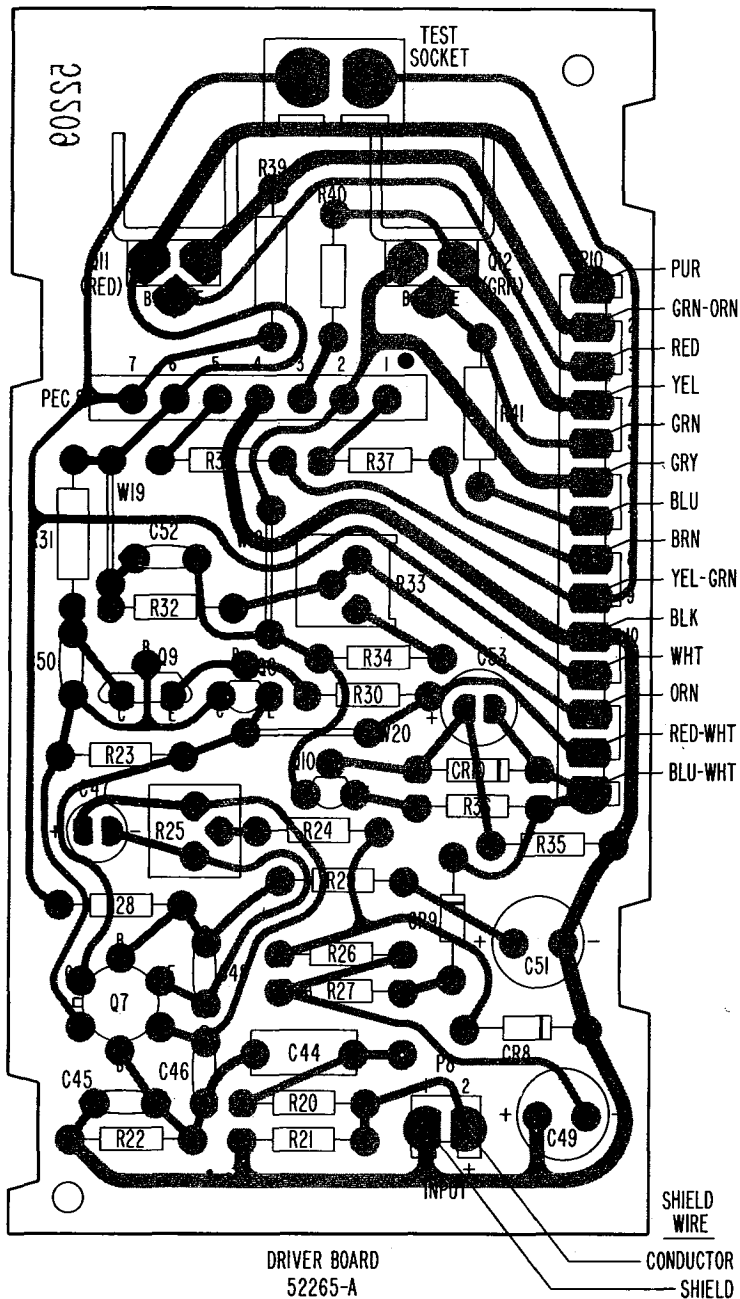
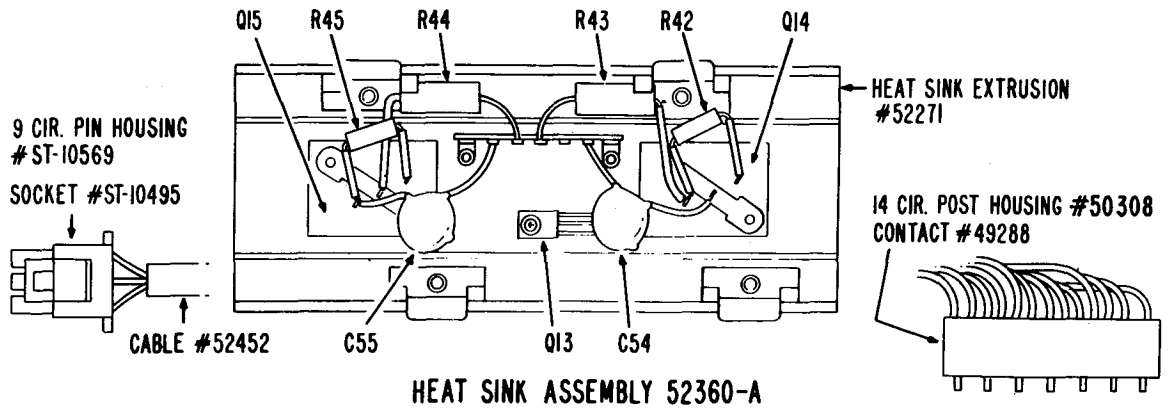


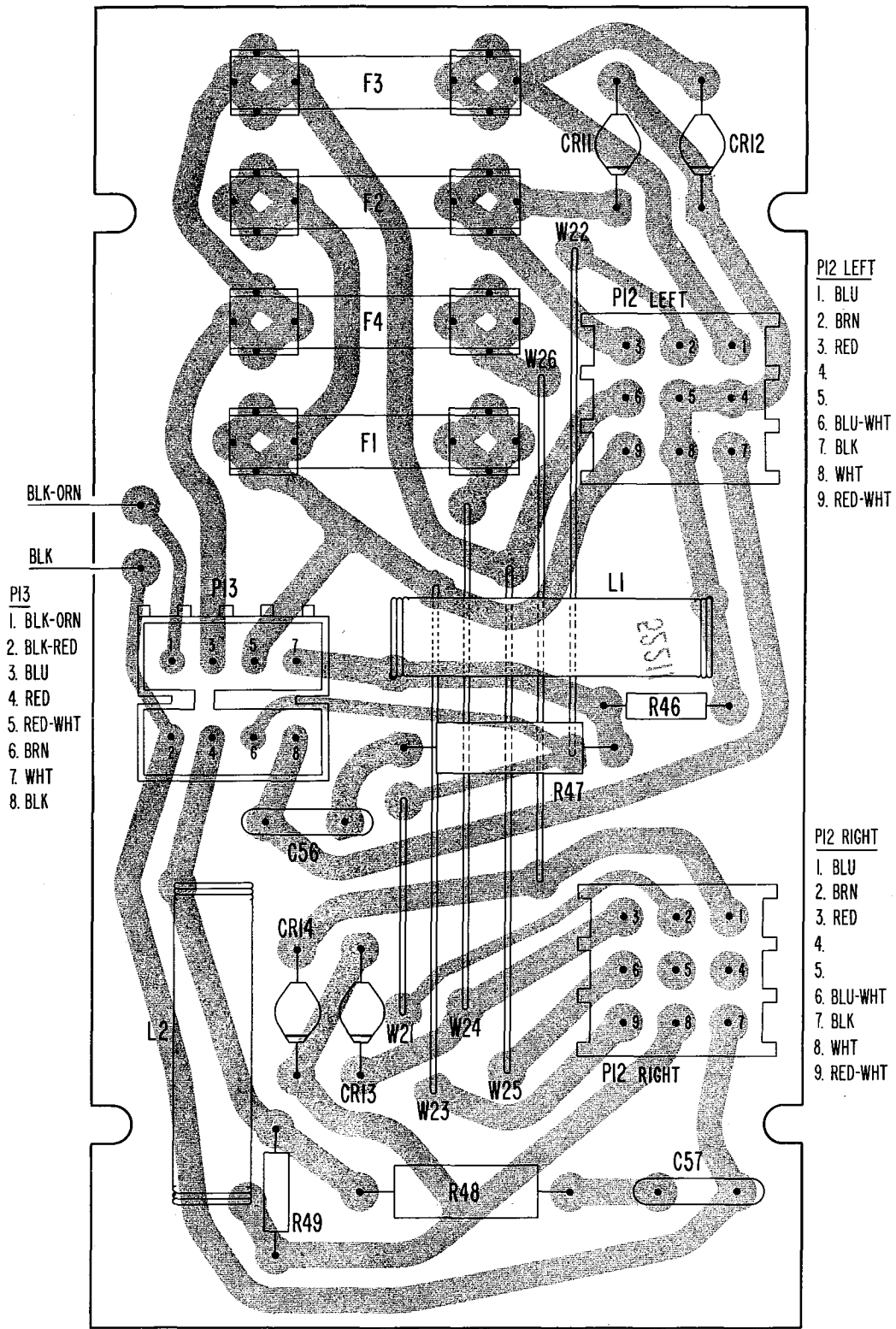


**STEREO
AMPLIFIER
No. 52280-A**

PARTS LIST ON
PAGES 53 & 54





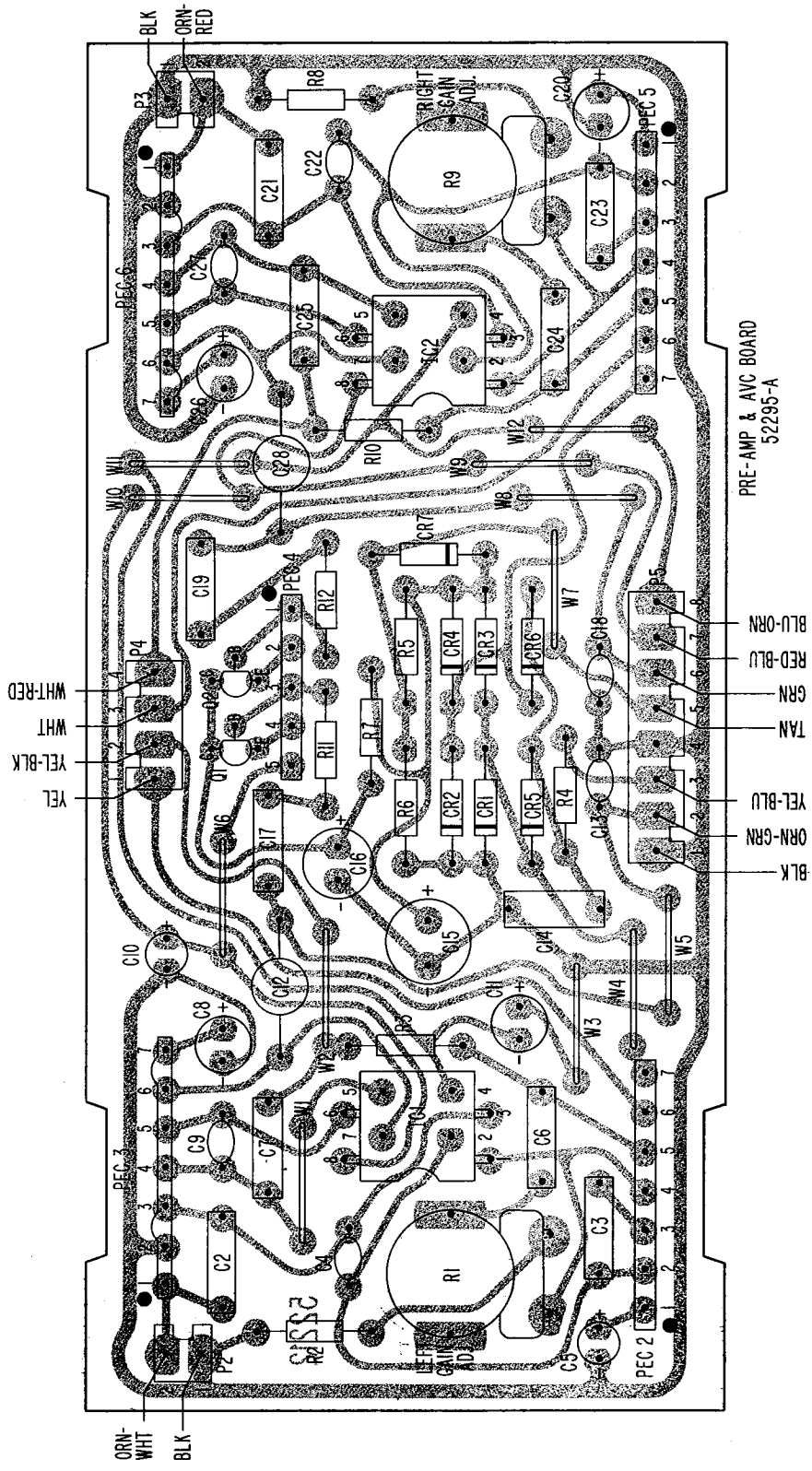


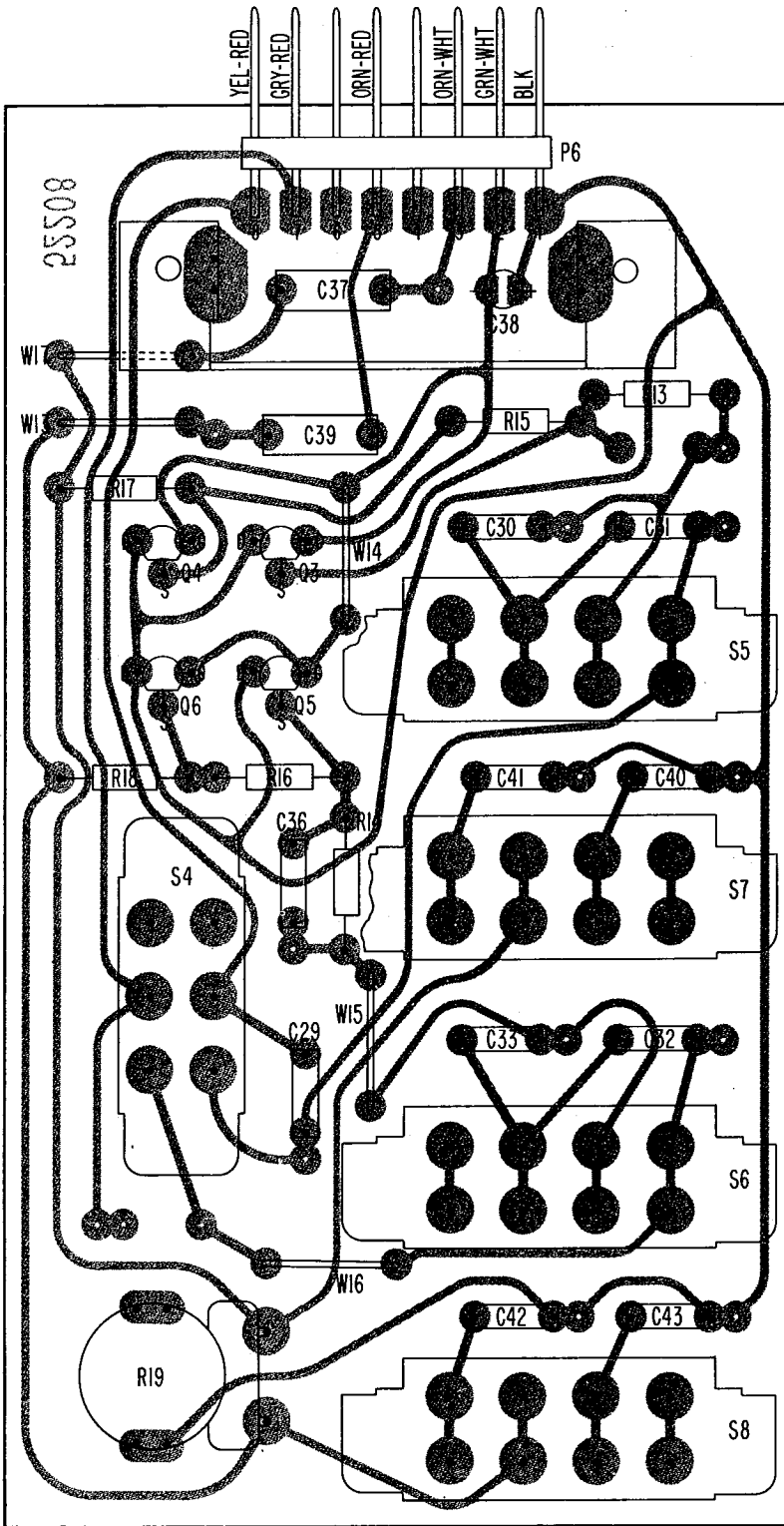
- PI3
1. BLK-ORN
 2. BLK-RED
 3. BLU
 4. RED
 5. RED-WHT
 6. BRN
 7. WHT
 8. BLK

- PI2 LEFT
1. BLU
 2. BRN
 3. RED
 - 4.
 - 5.
 6. BLU-WHT
 7. BLK
 8. WHT
 9. RED-WHT

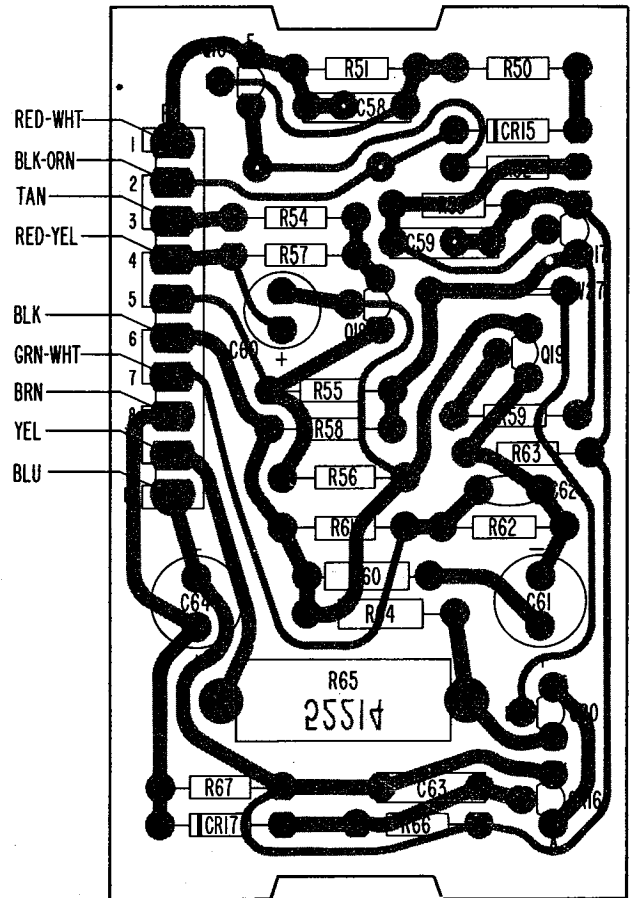
- PI2 RIGHT
1. BLU
 2. BRN
 3. RED
 - 4.
 - 5.
 6. BLU-WHT
 7. BLK
 8. WHT
 9. RED-WHT

FUSE BOARD
52275-A

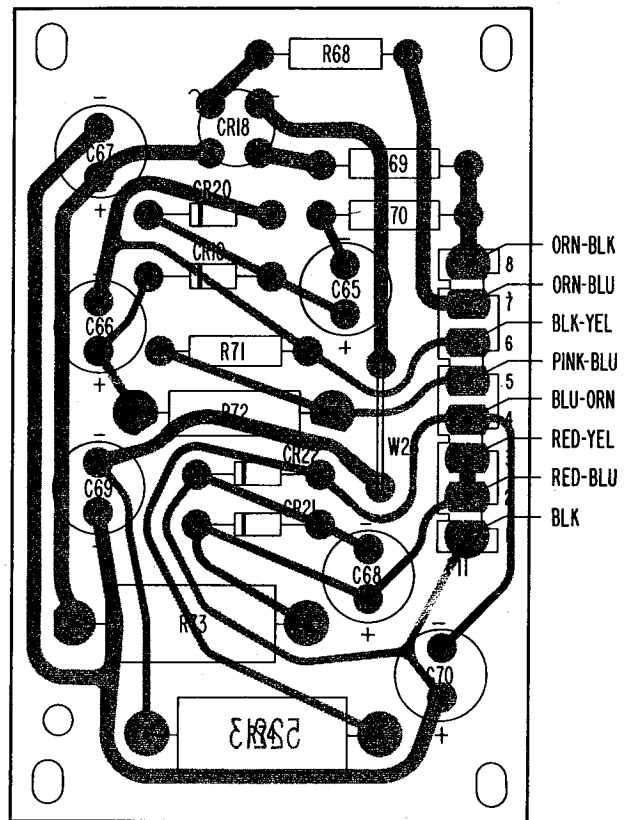




TONE CONTROL BOARD
52260-A



MUTE & SQUELCH BOARD
52345-A



POWER SUPPLY BOARD
52315-A



AMPLIFIER

Item	Part No.	Description	Item	Part No.	Description
CAPACITORS			C71&C72	52352	3000 MFD -10 + 100% 50V
C1	52393	.05 MFD 20% 100V	C73	45319	.02 MFD 20% 1000V
C2	47421	.1 MFD 20% 250V	RESISTORS		
C3	52354	.012 MFD 5% 250V	R1	49272	1K OHM Min. P.C. Control - Green
C4	45789	150 MMFD 10% 500V	R2	49264	470 OHM 1/4W 5%
C5	50647	4.7 MFD 20% 35V	R3	50643	300K OHM 1/4W 5%
C6 & C7	52799	.47 MFD 5% 100V	R4	49269	27K OHM 1/4W 5%
C8	50646	10 MFD 20% 25V	R5	49266	560K OHM 1/4W 5%
C9	45789	150 MMFD 10% 500V	R6	48042	2.2K OHM 1/4W 10%
C10&C11	50647	4.7 MFD 20% 35V	R7	49268	33K OHM 1/4W 5%
C12	49146	2.2 MFD 20% 35V	R8	49264	470 OHM 1/4W 5%
C13	33762	470 MMFD 10% 1000V	R9	49272	1K OHM Min. P.C. Control - Green
C14	48941	.22 MFD 20% 100V	R10	50643	300K OHM 1/4W 5%
C15	49271	220 MFD -0 + 100% 10V	R11 & R12	49267	56K OHM 1/4W 5%
C16	50684	22 MFD 20% 35V	R13 & R14	51291	22K OHM 1/4W 5%
C17	47421	.1 MFD 20% 250V	R15 & R16	52358	2.2K OHM 1/4W 5%
C18	33762	470 MMFD 10% 1000V	R17 & R18	51567	3.3K OHM 1/4W 5%
C19	47421	.1 MFD 20% 250V	R19	52366	100K OHM Min. P.C. Control - Blue
C20	50647	4.7 MFD 20% 35V	R20	48042	2.2K OHM 1/4W 10%
C21	47421	.1 MFD 20% 250V	R21	52514	82K OHM 1/4W 10%
C22	45789	150 MMFD 10% 500V	R22	52380	18K OHM 1/4W 5%
C23	52354	.012 MFD 5% 250V	R23	52378	680 OHM 1/4W 5%
C24 & C25	52799	.47 MFD 5% 100V	R24	51568	5.1K OHM 1/4W 5%
C26	50646	10 MFD 20% 25V	R25	52367	50 OHM Trim Control
C27	45789	150 MMFD 10% 500V	R26	48043	4.7K OHM 1/4W 10%
C28	49146	2.2 MFD 20% 35V	R27	53007	47 OHM 1W 10% FP
C29 thru			R28	52380	18K OHM 1/4W 5%
C33	48949	.027 MFD 10% 250V	R29	52513	240 OHM 1/4W 5%
C36	52353	.0047 MFD 10% 250V	R30	52373	10 OHM 1/4W 5%
C37	48951	.47 MFD 20% 100V	R31	53008	100 OHM 1W 5% FP
C38	52359	1 MFD 10% 35V	R32	52379	750 OHM 1/4W 5%
C39	48951	.47 MFD 20% 100V	R33	52368	200 OHM Trim Control
C40	52353	.0047 MFD 10% 250V	R34	52709	360 OHM 1/4W 5%
C41 & C42	52354	.012 MFD 5% 250V	R35	51291	22K OHM 1/4W 5%
C43	52353	.0047 MFD 10% 250V	R36	53039	120 OHM 1W 5% FP
C44	48951	.47 MFD 20% 100V	R37	51571	6.8K OHM 1/4W 5%
C45	33762	470 MMFD 10% 1000V	R38	53008	100 OHM 1W 5% FP
C46	44774	50 MMFD 10% 500V	R39	13182	2.7K OHM 1/2W 10%
C47	50646	10 MFD 20% 25V	R40	53008	100 OHM 1W 5% FP
C48	44774	50 MMFD 10% 500V	R41	13182	2.7K OHM 1/2W 10%
C49	52363	150 MFD 20% 40V	R42	31719	100 OHM 1W 10%
C50	45789	150 MMFD 10% 500V	R43 & R44	52383	0.33 OHM 5W 5%
C51	49278	22 MFD -0 + 100% 75V	R45	31719	100 OHM 1W 10%
C52	52369	.0056 MFD 10% 100V	R46	14234	22 OHM 1/2W 10%
C53	52364	150 MFD 20% 6.3V	R47 & R48	49298	22 OHM 2W 10%
C54 & C55	52382	.1 MFD 20% 100V	R49	14234	22 OHM 1/2W 10%
C56 & C57	52889	.1 MFD 20% 100V	R50	51293	10K OHM 1/4W 5%
C58 & C59	47422	.047 MFD 20% 250V	R51	51564	1K OHM 1/4W 5%
C60	50684	22 MFD 20% 35V	R52	51291	22K OHM 1/4W 5%
C61	52363	150 MFD 20% 40V	R53	51564	1K OHM 1/4W 5%
C62	33762	470 MMFD 10% 1000V	R54	52348	15K OHM 1/4W 5%
C63	47422	.047 MFD 20% 250V	R55	52351	120K OHM 1/4W 5%
C64	52361	47 MFD -10 +50% 50V	R56	52349	39K OHM 1/4W 5%
C65 & C66	49278	22 MFD -0 + 100% 75V			
C67 thru					
C70	52362	100 MFD -10 + 50% 40V			

PARTS ORDERING INFORMATION

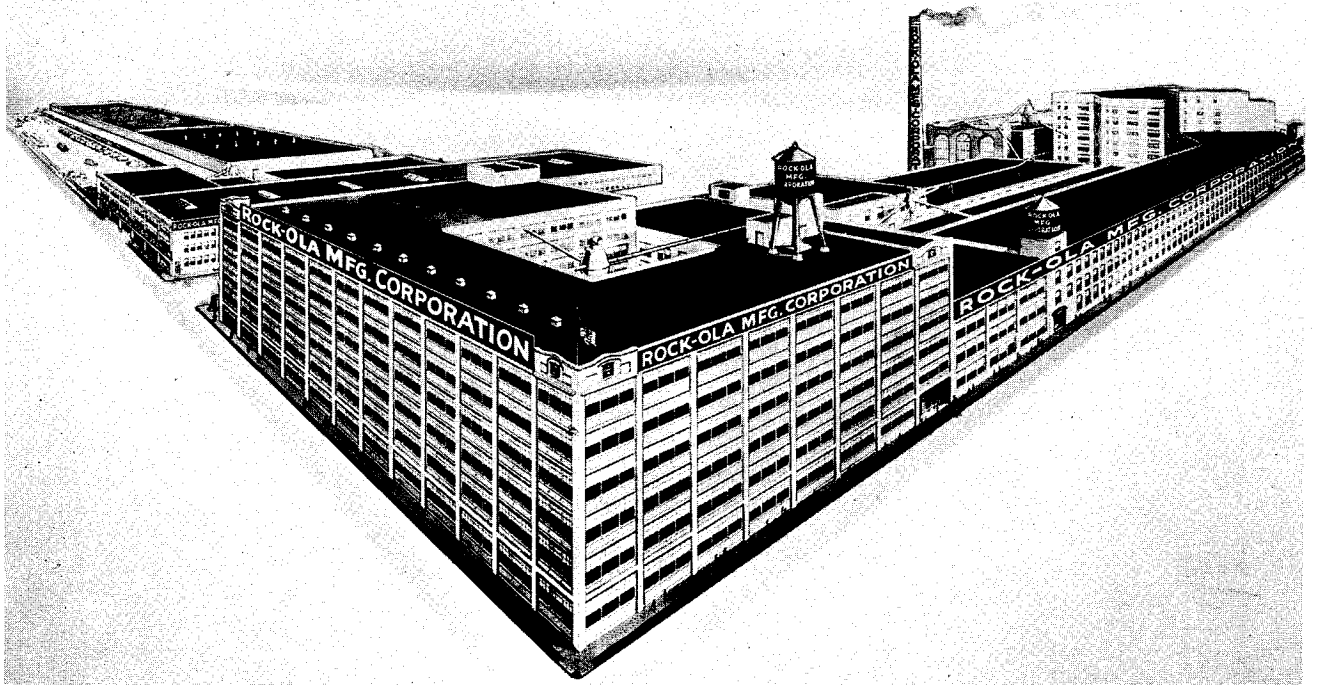
GENUINE ROCK-OLA PARTS ARE AVAILABLE ONLY FROM YOUR AUTHORIZED ROCK-OLA DISTRIBUTOR, WHOSE NAME AND ADDRESS MAY BE OBTAINED BY CONTACTING THE FACTORY SERVICE DEPARTMENT.

WHEN ORDERING ALWAYS INCLUDE: (1) PART NUMBER, (2) DESCRIPTION, (3) QUANTITY, (4) MODEL AND (5) SERIAL NUMBER OF THE PHONOGRAPH FOR WHICH THE PART IS INTENDED. ALL SERVICE ORDERS ORIGINATING OUTSIDE THE CONTINENTAL UNITED STATES AND CANADA SHOULD SPECIFY EXACT VOLTAGE AND HERTZ REQUIREMENTS.

ON OCCASION, ROCK-OLA WILL SUBSTITUTE PARTS IN ORDER TO PROVIDE BETTER SERVICE OR IMPROVED PARTS OF LATER DESIGN. SUBSTITUTIONS ARE NOTED IN THE CURRENT ROCK-OLA PARTS PRICE LIST.

THE HOME OF QUALITY BUILT PRODUCTS FOR GREATER PROFITS

The Rock-Ola factory in Chicago is the largest factory of its kind in the world devoted to the production of Coin Operated Equipment. It consists of a ground area of three and one-half city blocks with 23 buildings and a floor area of more than one-half million square feet.



ALWAYS INSIST ON GENUINE ROCK-OLA SERVICE PARTS

 **ROCK-OLA**[®] *Manufacturing Corporation*

800 N. KEDZIE AVENUE, CHICAGO, ILLINOIS 60651

TELEPHONE: AREA CODE 312 638-7600