

Service Manual



PLX-500-K

ORDER NO.
RRV4664

TURNTABLE

PLX-500-K PLX-500-W

THIS MANUAL IS APPLICABLE TO THE FOLLOWING MODEL(S) AND TYPE(S).

Model	Type	Power Requirement	Remarks
PLX-500-K, -W	LPWSYXEG	AC 110 V to 120 V or 220 V to 240 V	
PLX-500-K, -W	FWUXEGCB	AC 110 V to 120 V or 220 V to 240 V	

THIS SERVICE MANUAL SHOULD BE USED TOGETHER WITH THE FOLLOWING MANUAL(S).

Model	Order No.	Remarks
PLX-500-K, -W	RRV4665	SCHEMATIC DIAGRAM, PCB CONNECTION DIAGRAM, PCB PARTS LIST



Pioneer DJ Corporation

6F, Yokohama i-Mark Place, 4-4-5 Minatomirai, Nishi-ku, Yokohama, Kanagawa 220-0012 JAPAN

SAFETY INFORMATION

A



This service manual is intended for qualified service technicians; it is not meant for the casual do-it-yourselfer. Qualified technicians have the necessary test equipment and tools, and have been trained to properly and safely repair complex products such as those covered by this manual.

Improperly performed repairs can adversely affect the safety and reliability of the product and may void the warranty. If you are not qualified to perform the repair of this product properly and safely, you should not risk trying to do so and refer the repair to a qualified service technician.

B

■

C

■

D

■

E

■

F

CONTENTS

SAFETY INFORMATION.....	2
1. SERVICE PRECAUTIONS.....	3
1.1 NOTES ON SOLDERING.....	3
1.2 NOTES ON SERVICING.....	3
2. SPECIFICATIONS.....	4
3. BASIC ITEMS FOR SERVICE.....	5
3.1 CHECK POINTS AFTER SERVICING.....	5
3.2 JIGS LIST.....	5
3.3 PCB LOCATIONS.....	6
4. BLOCK DIAGRAM.....	7
4.1 OVERALL WIRING DIAGRAM.....	7
4.2 AUDIO SYSTEM BLOCK DIAGRAM.....	8
5. DIAGNOSIS.....	9
5.1 TROUBLESHOOTING.....	9
5.2 AUDIO OUTPUT CHECK USING rekordbox.....	12
6. SERVICE MODE.....	13
7. DISASSEMBLY.....	14
8. EACH SETTING AND ADJUSTMENT.....	19
9. EXPLODED VIEWS AND PARTS LIST.....	20
9.1 PACKING SECTION.....	20
9.2 EXTERIOR SECTION.....	22

1. SERVICE PRECAUTIONS

1.1 NOTES ON SOLDERING

- For environmental protection, lead-free solder is used on the printed circuit boards mounted in this unit.
Be sure to use lead-free solder and a soldering iron that can meet specifications for use with lead-free solders for repairs accompanied by reworking of soldering.
Do NOT use a soldering iron whose tip temperature cannot be controlled.

1.2 NOTES ON SERVICING

For final-check playback after repair, a commercially available record is required.
The details, see "3.2 JIGS LIST".

2. SPECIFICATIONS

- A
- Power requirementsAC 110 V to 120 V or 220 V to 240 V, 50 Hz/60 Hz
Power consumption 11 W
Main unit weight 10.7 kg (23.6 lb)
External dimensions 450 mm (W) × 158.5 mm (H) × 367.5 mm (D)
(17.7 in. (W) × 6.24 in. (H) × 14.5 in. (D))
Tolerable operating temperature +5 °C to +35 °C (+41 °F to +95 °F)
Tolerable operating humidity 5 % to 85 % (no condensation)

■

Turntable part

- Drive method Servo type direct drive
Motor 3-phase brushless DC motor
Braking system Electronic brake
Rotation speed 33 1/3 rpm, 45 rpm, 78 rpm
Rotation speed adjustment range ±8 %
Wow and flutter 0.15 % or less WRMS
S/N ratio 50 dB or higher
Turntable Aluminum die-casting Diameter: 332 mm
Starting torque 1.6 kg·cm or more
Start time 1 second or less (at 33 1/3 rpm)
- B

■

Tone arm part

- Arm type Universal type S-shape tone arm,
gimbal-supported type bearing structure, static balance type
Effective length 230.5 mm
Overhang 16 mm
Tracking error Within 3°
Arm height adjustment range 6 mm
Stylus pressure variable range 0 g to 4.0 g (1 scale 0.1 g)
Proper cartridge weight 9.5 g or less (single cartridge)
Cartridge type VM
- C

■

Output voltage

- PHONO 2.5 mV/1 kHz
LINE 150 mV/1 kHz
-

— The specifications and design of this product are subject to change without notice.

■

Accessories

- Turntable
(200-TT100-232C)
- Slip mat
(-K: 612-PLX500K-095)
(-W: 612-PLX500W-095)
- Dust cover
(-K: 705-PLX500-1650)
(-W: 705-PLX500W-1651)
- Adapter for EP record
(200-DJ3000-211)
- Balance weight
(702-PLX500-098)
- Headshell (cartridge included)
(705-PLX500-1649)
- Shell Weight
(200-PLX500-268)
- Power Cord
(LPWSYXEG: 409-DJ2-070A)
(FWUXEGCB: 409-DJ2-069A)
- USB cable
(408-SUB-132)
- Audio adapter cable
(Stereo pin plug (female) to stereo mini plug (male))
(408-PL50-068)
- Warranty*
(LPWSYXEG: 501-PLX-2710)
*The included warranty is for the European region.
- Operating instructions
(LPWSYXEG: DRH1378)
(FWUXEGCB: DRH1379)

D

E

F

3. BASIC ITEMS FOR SERVICE

3.1 CHECK POINTS AFTER SERVICING

Items to be checked after servicing

To keep the product quality after servicing, confirm recommended check points shown below.

No.	Procedures	Check points
1	Confirm whether the customer complain has been solved.	The customer complain must not be reappeared. Audio and operations must be normal.
2	Check whether the unit can be turned ON or OFF.	The indicators on the unit must light when the unit is turned ON.
3	Check playback operations.	The turntable must turn or stop properly when the START/STOP button is pressed. The tone arm must move properly when the lifter lever is moved up or down.
4	Check the pitch adjustment.	Check whether the pitch can be adjusted, using the TEMPO slider.
5	Check the LINE OUT/PHONO OUT signals.	Play a record back and check that the audio output from the LINE OUT/PHONO OUT terminals is normal. (For checking, use a powered speaker, pre-main amplifier or a DJ mixer.)
6	Check the appearance of the product.	No scratches or dirt on its appearance after receiving it for service.

See the table below for the items to be checked regarding audio.

Item to be checked regarding audio	
Distortion	Volume too high
Noise	Volume fluctuating
Volume too low	Sound interrupted

3.2 JIGS LIST

Jigs List

Jig Name	Part No.	Purpose of use / Remarks
LP record or EP record	(Marketed product)	For checking playback operations and the audio output.
Spacer	Dust cover (GGP1257)	Registered the Dust cover (705-PLX500-1650) as a jig for services. You have to procure four pieces of cushion to be placed at the four corners of the dust cover where the turntable is to contact on your own, in order to prevent the top panel of this unit from being damaged.
	or Four cylindrical wood offcuts, etc., of 40 mm dia. × 80 mm in length or longer	To be placed at the four corners of the unit when diagnoses are to be performed with the unit upside down
USB cable	GGP1193	For checking the audio output.

Lubricants and Glues List



Name	Part No.	Remarks
Adhesive	GYL1007	Refer to "7. DISASSEMBLY".
Grease	GYA1004	Refer to "9.2 EXTERIOR SECTION".

3.3 PCB LOCATIONS

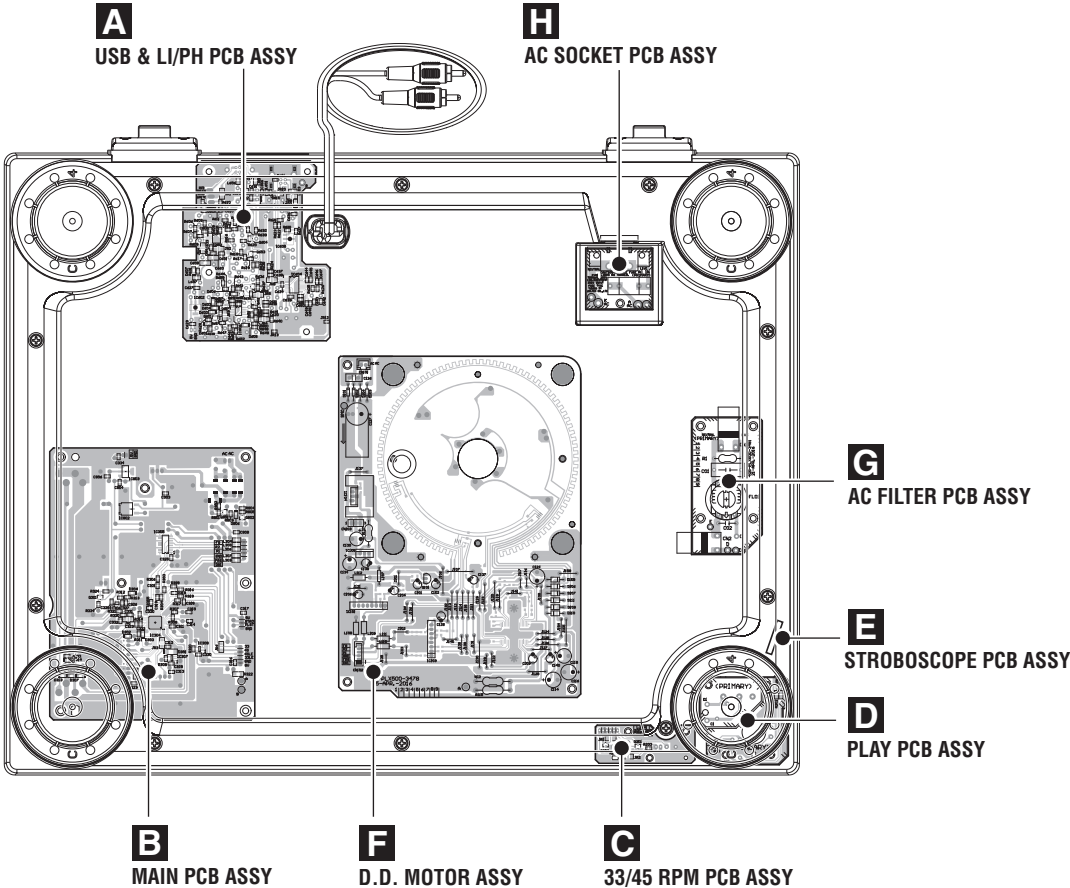
A

Bottom View

B

C

D



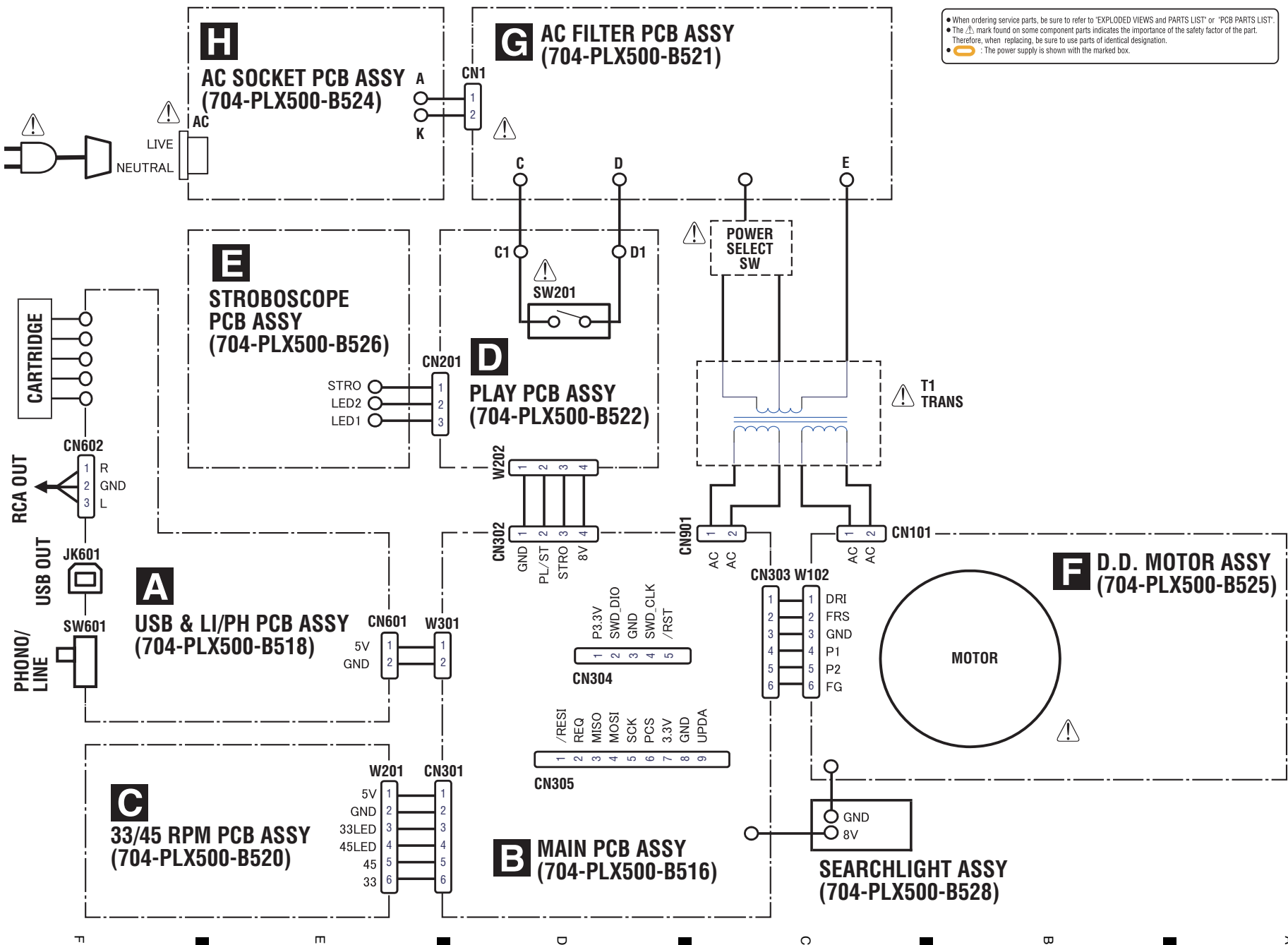
NOTES: ● Parts marked by “NSP” are generally unavailable because they are not in our Master Spare Parts List.
● The ⚠ mark found on some component parts indicates the importance of the safety factor of the part.
Therefore, when replacing, be sure to use parts of identical designation.

E	Mark	No.	Description	Part No.
	LIST OF ASSEMBLIES			
		1..	MAIN PCB ASSY	704-PLX500-B516
		1..	USB & LI/PH PCB ASSY	704-PLX500-B518
		1..	33/45 RPM PCB ASSY	704-PLX500-B520
■	NSP	1..	AC FILTER & PLAY PCB ASSY	704-PLX500-B523
	⚠	2..	AC FILTER PCB ASSY	704-PLX500-B521
	⚠	2..	PLAY PCB ASSY	704-PLX500-B522
	⚠	1..	AC SOCKET PCB ASSY	704-PLX500-B524
F		1..	D.D. MOTOR PACKING ASSY	705-PLX500-1652
NSP		2..	D.D. MOTOR ASSY	704-PLX500-B525
		1..	STROBOSCOPE PCB ASSY	704-PLX500-B526

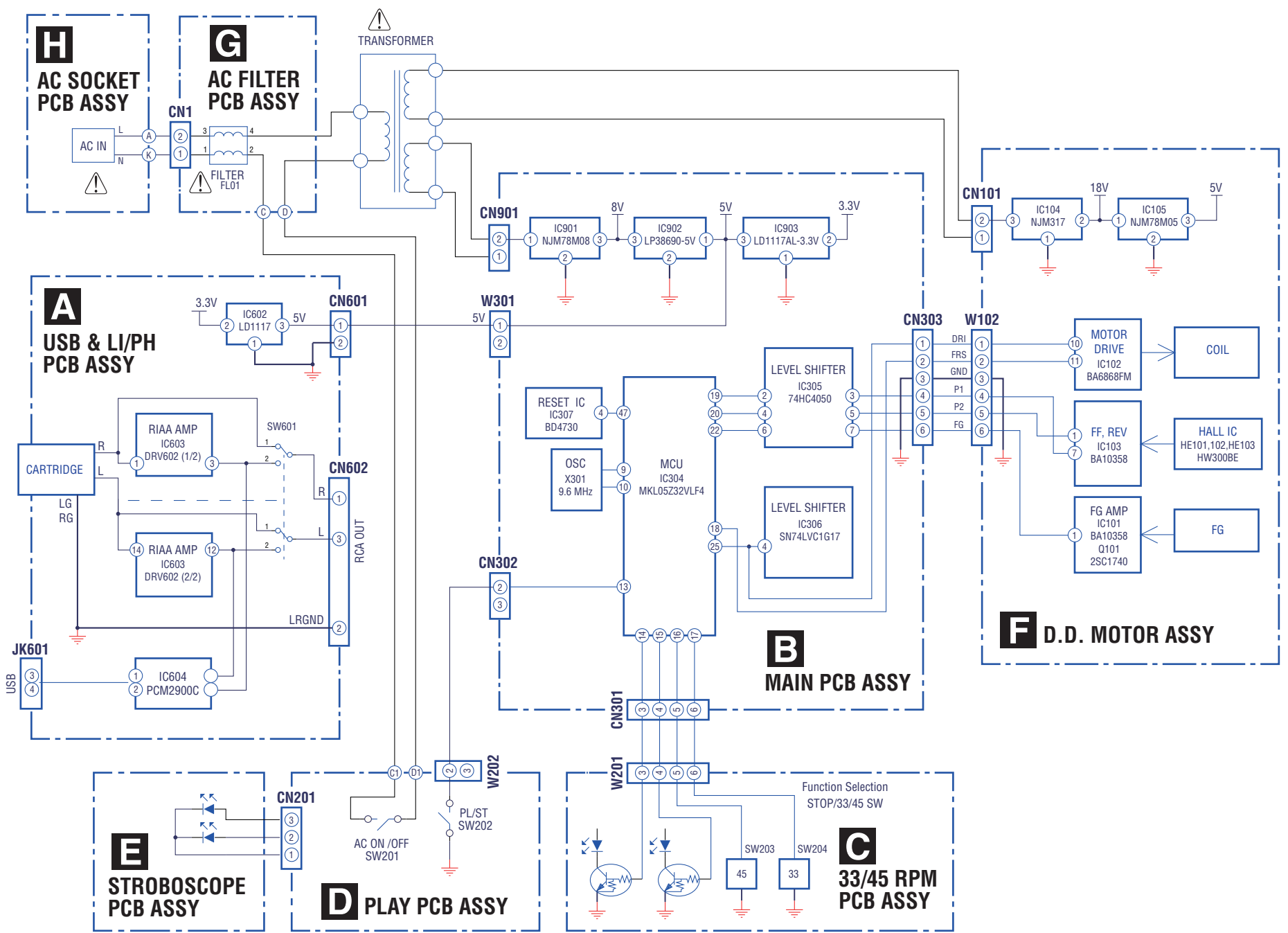
4. BLOCK DIAGRAM

4.1 OVERALL WIRING DIAGRAM

4. BLOCK DIAGRAM



4.2 AUDIO SYSTEM BLOCK DIAGRAM

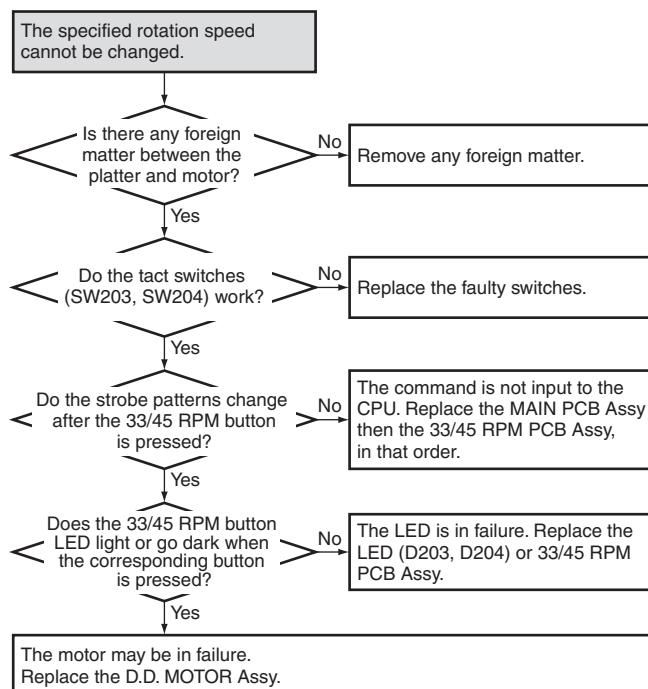
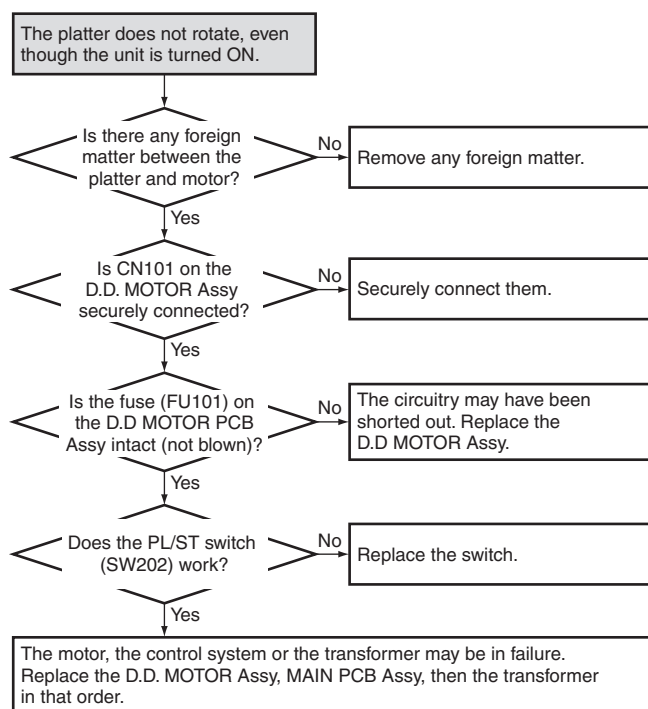
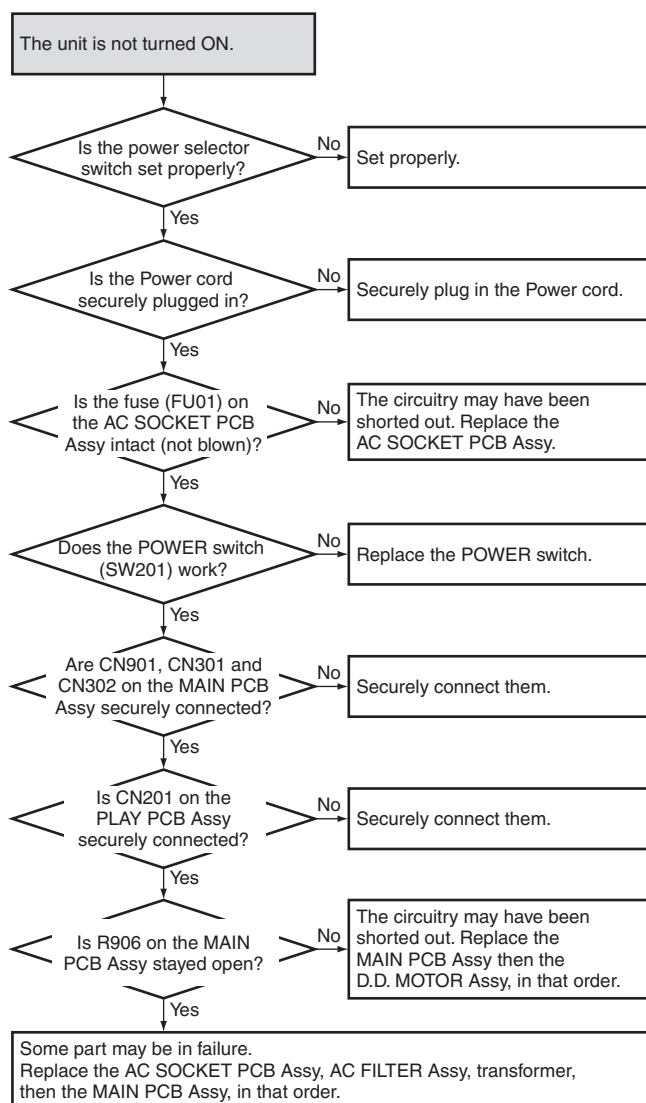


PLX-500-K

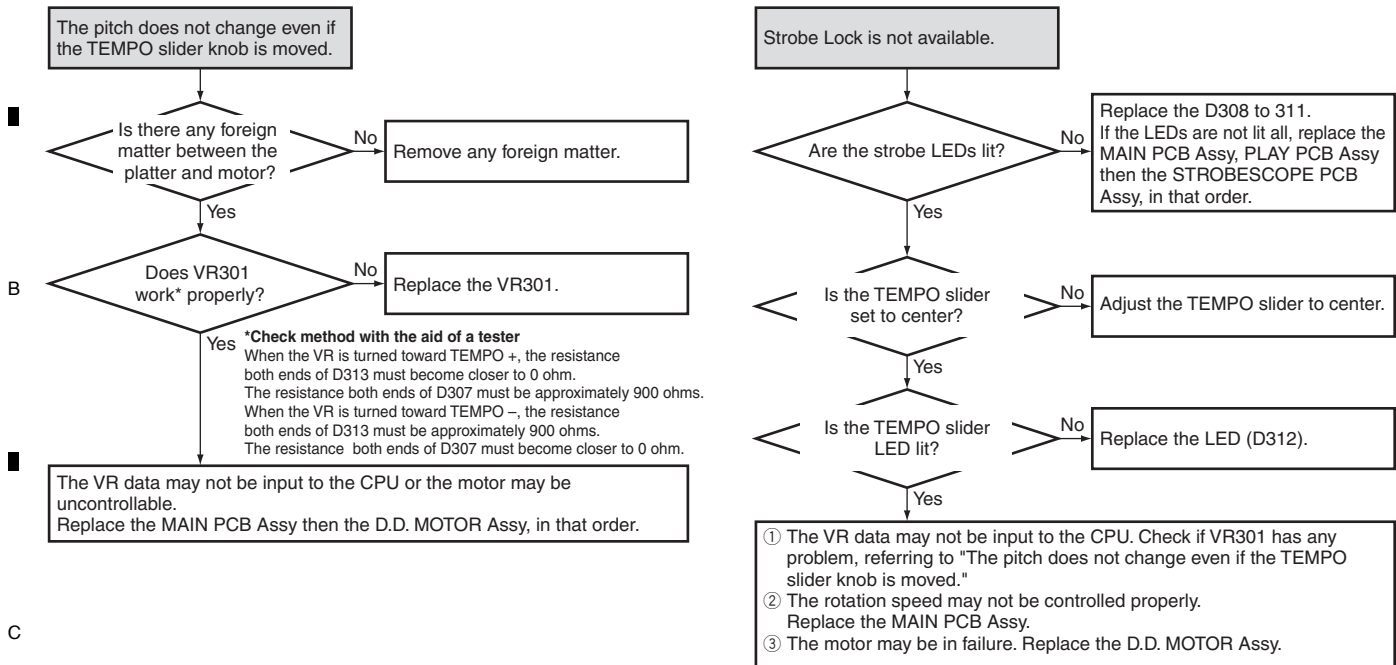
5. DIAGNOSIS

5.1 TROUBLESHOOTING

[1] Abnormality regarding startup

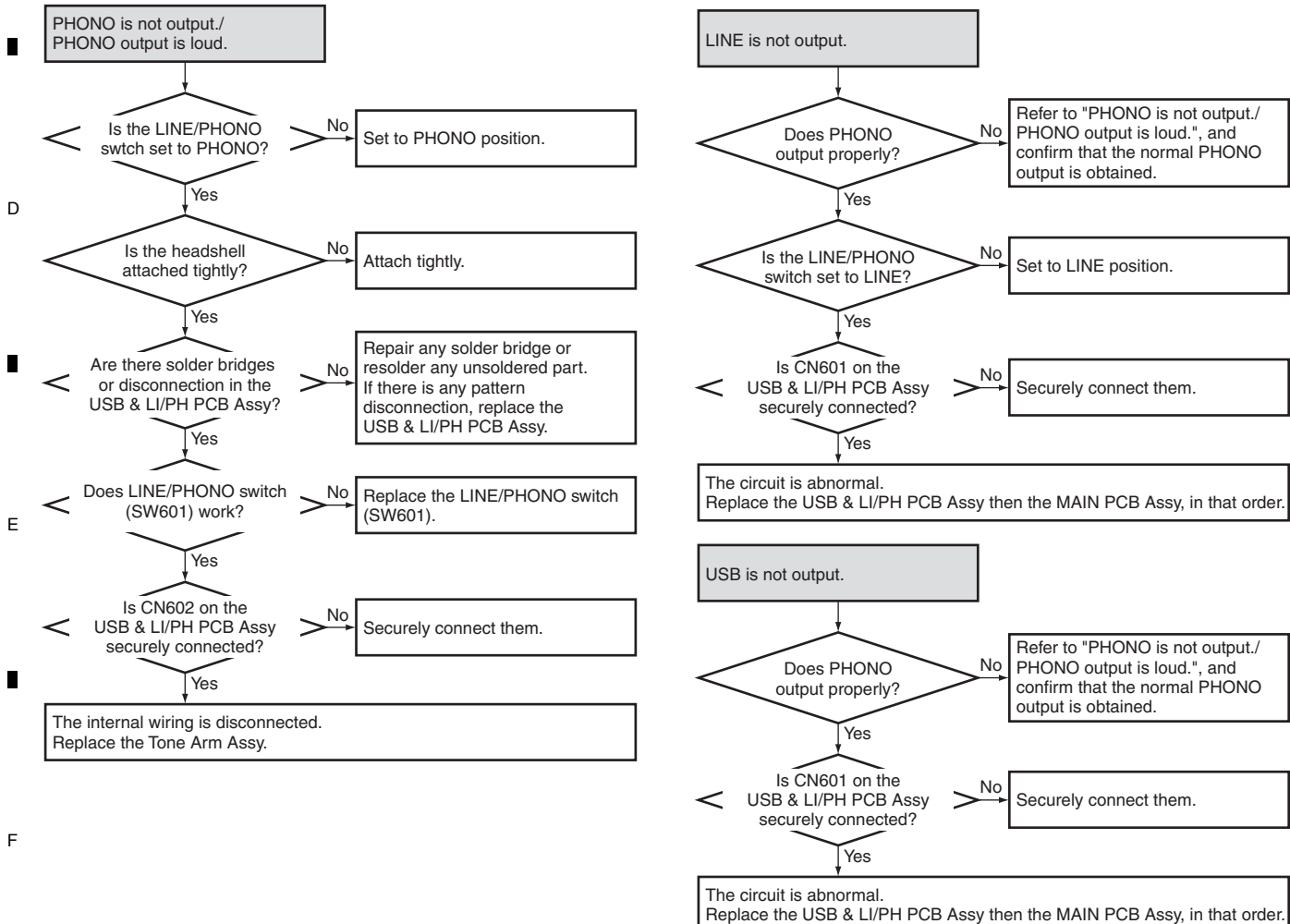


A [2] Abnormality regarding the operating elements and LEDs



C

[3] Abnormality regarding audio



F

Waveforms

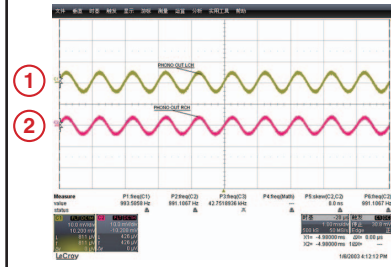
PHONO output during playback at 1 kHz, 0 dB.

① CH1: L ch OUTPUT (CN602 pin3)

V: 10 mV/div. H: 1 mS/div.

② CH2: R ch OUTPUT (CN602 pin1)

V: 10 mV/div. H: 1 mS/div.



A Confirm that the sound of the analog record played back by this unit is output properly from the USB terminal to the computer in this item.

[Installation of rekordbox]

A brief explanation of how to install rekordbox on a PC is given below. For details, refer to the operating instructions of the software.

Install the driver software that enables audio output from the computer beforehand.
The operating environment of the PC required for installation of rekordbox is shown below.

Minimum operating environment

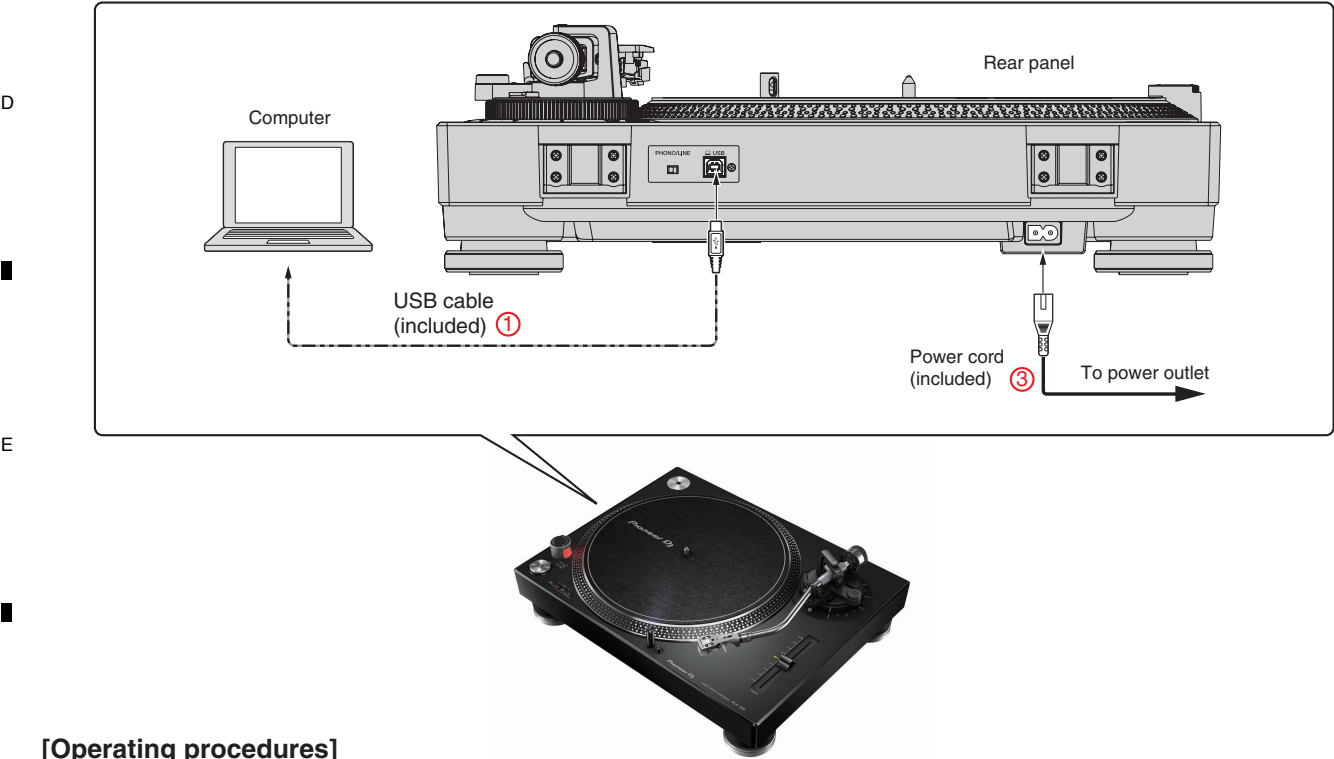
Supported operating systems	CPU and required memory	Others	
Mac OS X: 10.11/10.10/10.9 (latest update)	Intel® processor Core™ i3/i5/i7, Intel® processor Core™ 2 Duo	USB port	A USB 2.0 port is required to connect the computer with this unit.
	4 GB or more of RAM	Display resolution	Resolution of 1280 x 768 or greater
Windows: 32-bit version or 64-bit version of Windows 10/Windows 8.1/Windows 7 (latest service pack)	Intel® processor Core™ i3/i5/i7, Intel® processor Core™ 2 Duo	Internet connection	An Internet connection is required for registering the rekordbox user account and downloading the software.
	4 GB or more of RAM		

- For information on the latest system requirements, compatibility, and supported operating systems of rekordbox, see [System Requirements] on the rekordbox.com site below.
<http://rekordbox.com/>
- Operating System support assumes you are using the latest point release for that version.

For the latest version of the rekordbox software, access rekordbox.com and download the software from there.

- C For downloading, registration of a user account at rekordbox is required.
Unzip the downloaded file, then double-click the unzipped file to launch the installer.
Read the terms of the license agreement carefully, and if you agree, select [Agree], then click [Next](Mac OS X: Continue). After installation is completed, the Installation Completed screen will be displayed. Click on [Finish](Mac OS X: Close) to quit the rekordbox installer.
- Be sure to use rekordbox Version 4.2.1 or later, because the prior versions of rekordbox do not support the PLX-500.

[Connections]



[Operating procedures]

- F
- Connect this unit to your computer via a USB cable.
 - Turn on the computer's power.
 - Connect the power cord.
 - Switch the [POWER] switch on this unit's top panel to the [ON] side to turn this unit's power on.

Run the operation check with rekordbox.

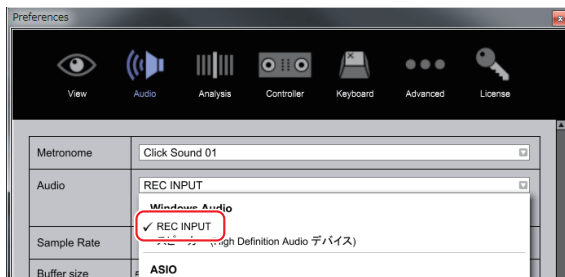
Starting the rekordbox.



- ① Set REC of the upper panel to active, and display the recording panel window.
- ② Confirm that the recording source display is "USB REC".

When the recording source display is not "USB REC",

- Display the AUDIO tab of the configuration screen.
- Select "REC INPUT" from the pull-down of AUDIO.
- Close the configuration.



- ③ Confirm that the recording adjust knob is set to center.
- ④ Place a record on the turntable of this unit. After laying down the stylus, press [START/STOP] button and play back the music.
- ⑤ Confirm that the recording level indicator flashes near the center position.

End the system.

- 1 End the rekordbox.
- 2 Change the POWER switch on the top panel of this unit to [OFF] side, and turn off the power of this unit.
- 3 Unplug the USB cable from the computer.

6. SERVICE MODE

There is no information to be shown in this chapter.

7. DISASSEMBLY

Note:

Even if the unit shown in the photos and illustrations in this manual may differ from your product, the procedures described here are common.

Notes on performing diagnosis with the unit turned upside down (on how to secure the tone arm, etc.):

Be sure to secure the tone arm with the hook for the tone arm before turning the unit upside down.
Remove the items that can fall, such as the turntable and turntable sheet, from the unit beforehand.
Be sure to use the spacers or a dust cover (GGP1257) dedicated for repair use (NOT the customer's own dust cover) before turning the unit upside down.

Disassembly for each Assemblies

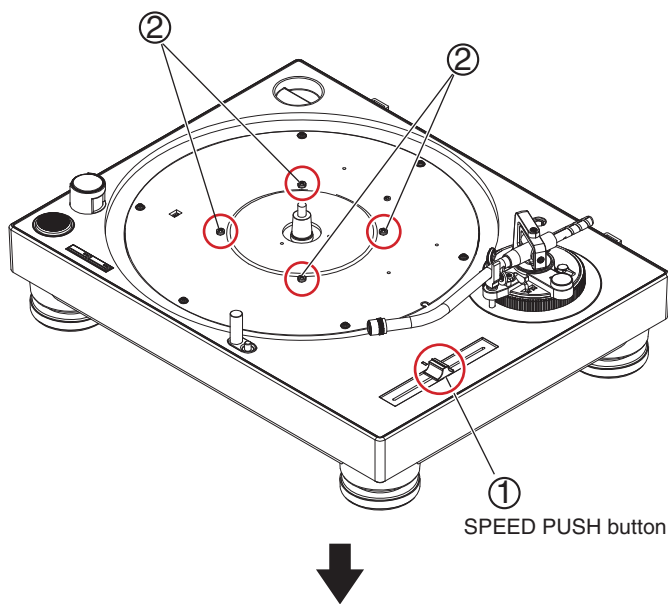
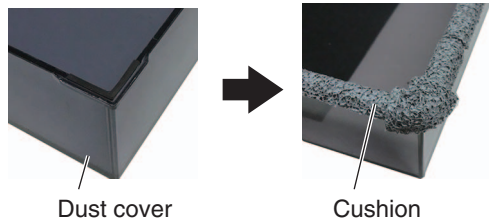
[1] Exterior Section

- (1) Remove the SPEED PUSH button.
- (2) Remove the 4 screws (602-RP5000-412).
**Except when removing the D.D. Motor Assy, do not remove the 4 screws.*
- (3) Turn the unit upside down.

Note:

Before turning the unit upside down, be sure to place the spacers or dust cover so that no load is applied to the tone arm, etc.
As the dust cover is not so strong, be careful not to apply a heavy load.

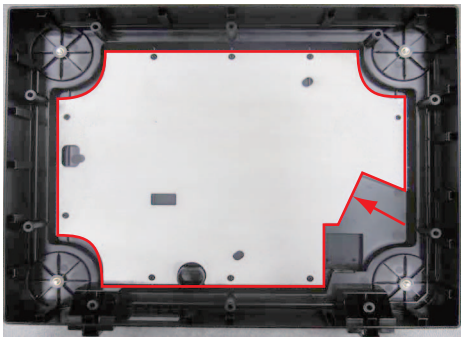
Put a 4 cushion on the contact part of 4 corners of the Dust cover to prevent you from injuring Top panel.



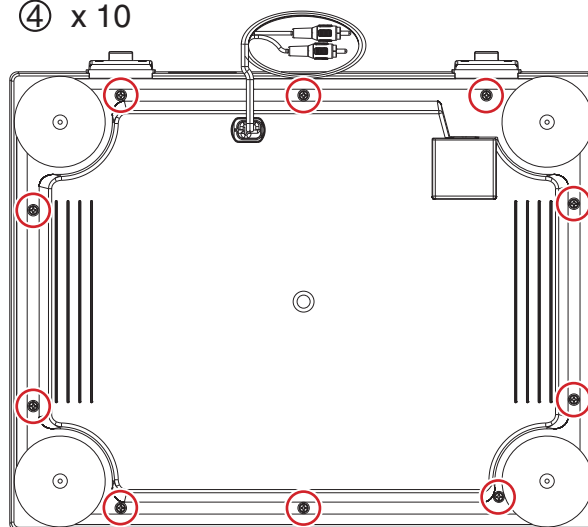
(4) Remove the 10 screws (602-HPTB310-797).

Note:

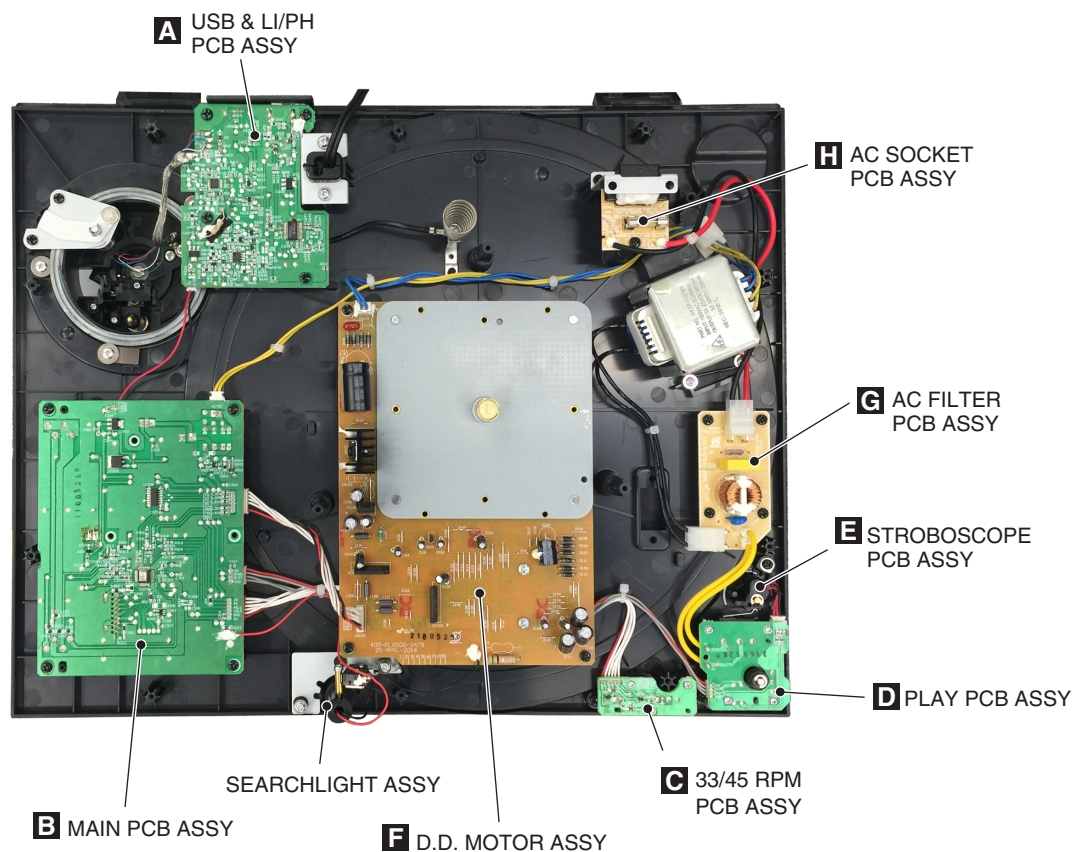
Be careful not to touch sheet metal
(The burr of the outer periphery) that attached to
the bottom case.



④ x 10



• Bottom view



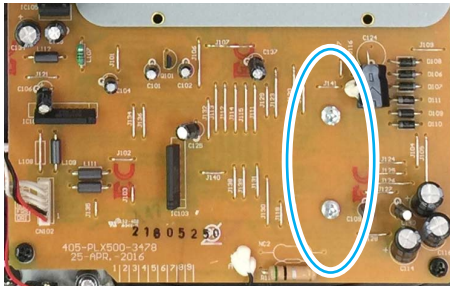
[1-1] D.D. MOTOR Assy

- (1) Disconnect the connector (CN101).
- (2) Disconnect the connector (CN303) on the MAIN Assy.
- (3) Disconnect the cable (black) of the SEARCHLIGHT Assy.
- (4) Remove the 3 screws (602-DJ5500-452), and then remove the D.D. MOTOR Assy.

Note:

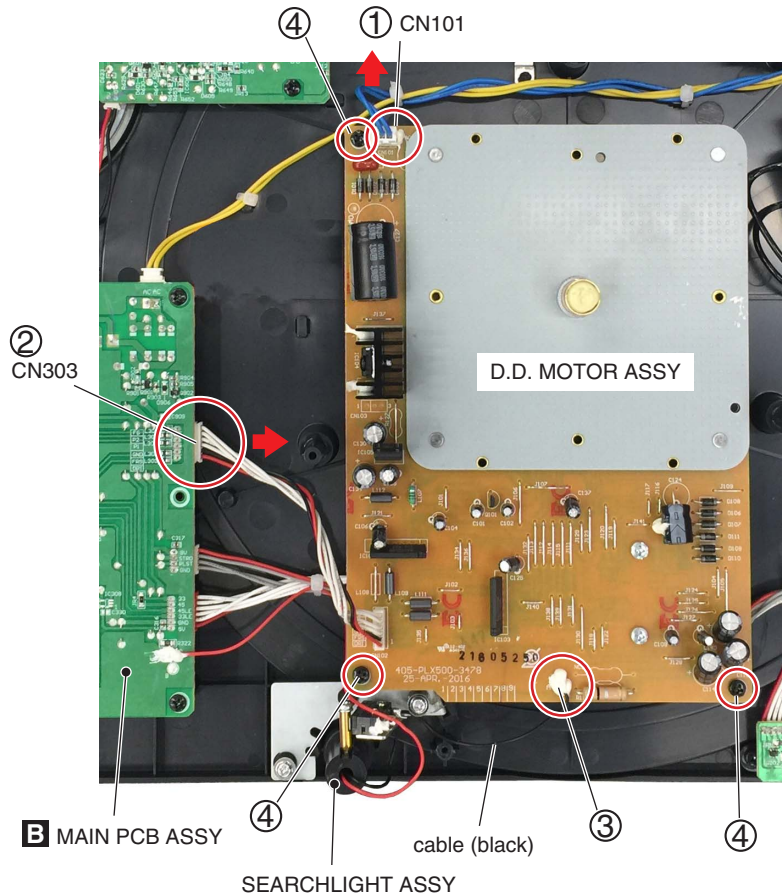
When the removal of the adhesive, apply the adhesive at the time of assembly. (GYL1007)

D.D. MOTOR Assy



Note:

Do not remove the two screws.

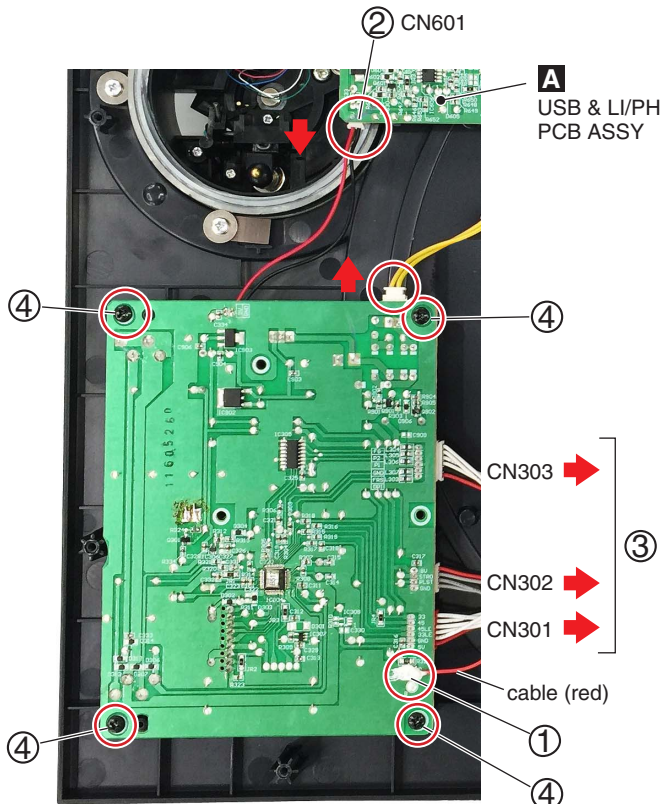


[1-2] MAIN Assy

- (1) Disconnect the cable (red) of the SEARCHLIGHT Assy.
- (2) Disconnect the connector (CN601) on the USB & LI/PH PCB ASSY.
- (3) Disconnect the connectors (CN301, CN302, CN303 and CN901).
- (4) Remove the 4 screws (602-DJ5500-452), and then remove the MAIN Assy.

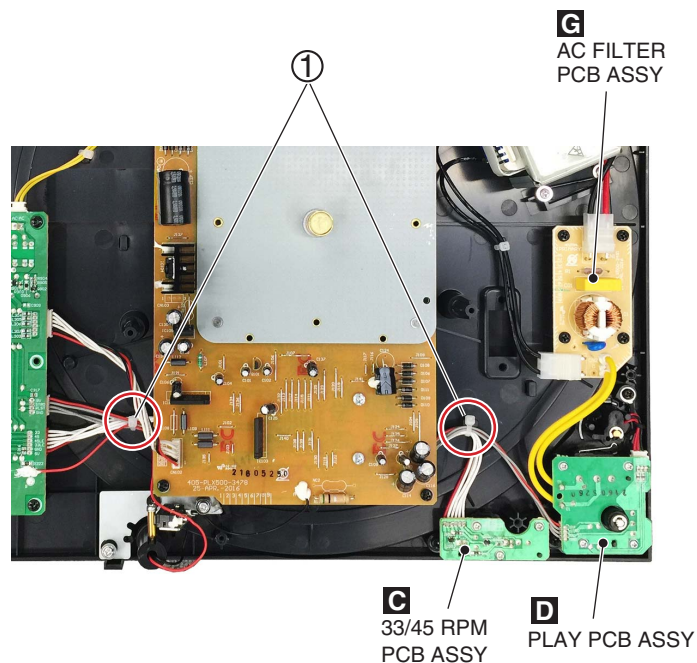
Note:

When the removal of the adhesive, apply the adhesive at the time of assembly. (GYL1007)

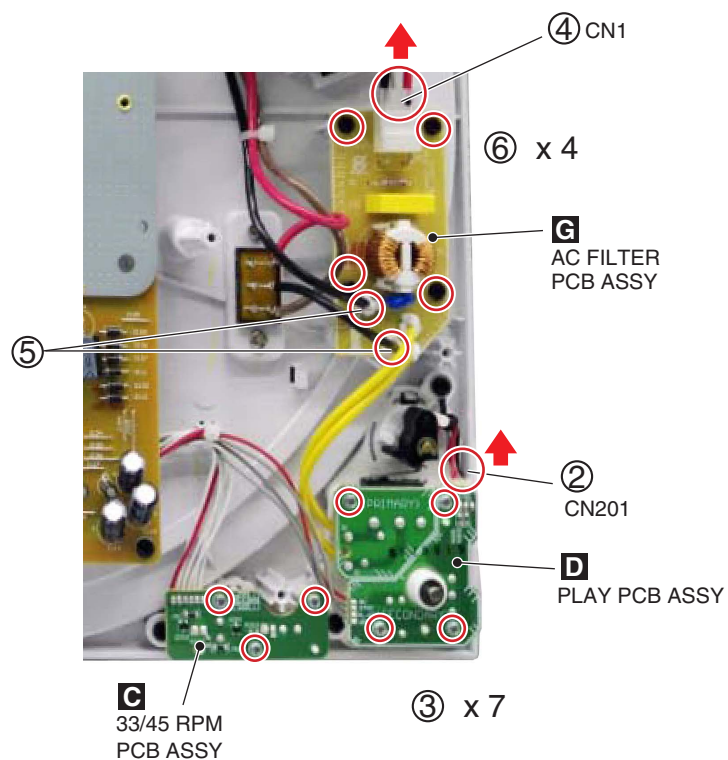


[1-3] AC FILTER, PLAY, 33/45 RPM PCB Assy

(1) Cut the 2 cable ties.

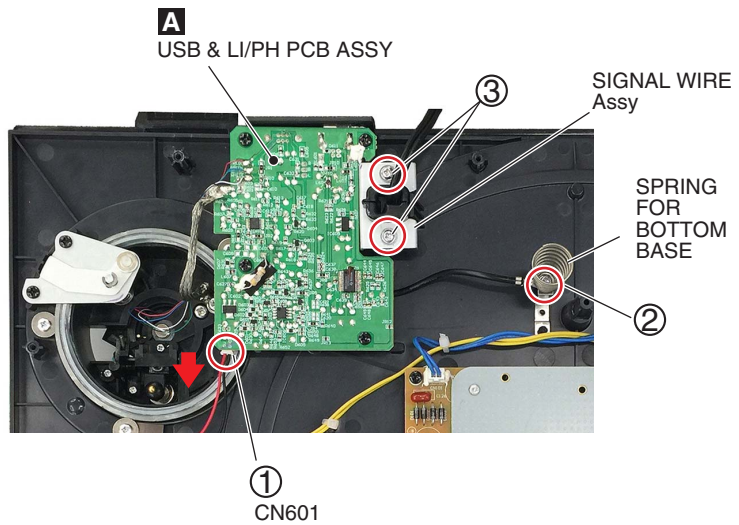


- (2) Disconnect the connector (CN201) on the PLAY PCB Assy.
- (3) Remove the 7 screws (602-SL24F-099), and then remove the PLAY PCB Assy and 33/45 RPM PCB Assy.
- (4) Disconnect the connector (CN1) on the AC FILTER PCB Assy.
- (5) Disconnect the 2 cables (black) of the AC FILTER PCB Assy.
- (6) Remove the 4 screws (602-DJ5500-452), and then remove the AC FILTER PCB Assy.



A [1-4] USB & LI/PH Assy

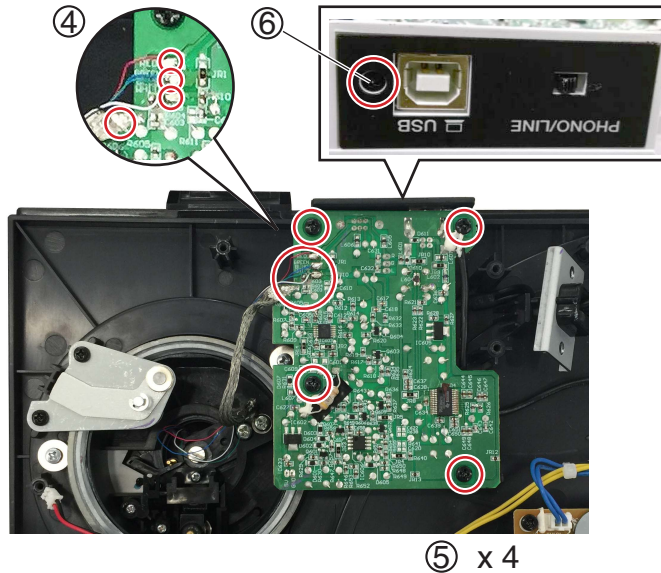
- (1) Disconnect the connector (CN601) on the PLAY PCB Assy.
- (2) Remove the screw (602-B600-057), and then remove SPRING FOR BOTTOM BASE and wire.
- (3) Remove the 2 screws (602-B600-058), and then remove the SIGNAL WIRE Assy.



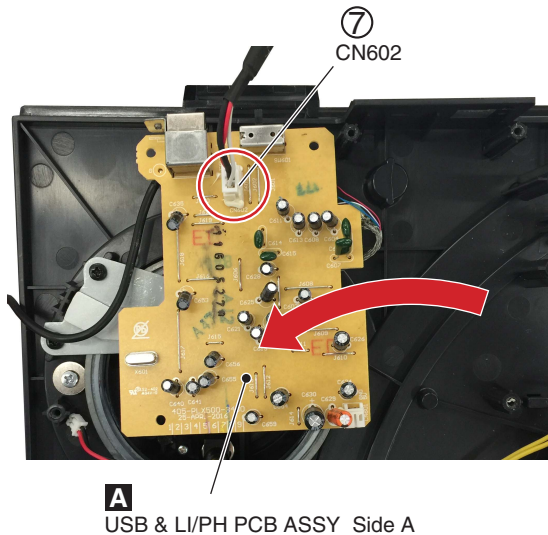
- (4) Remove 4 places of solders.

Note:
Be sure to swiftly remove solder, paying attention not to let the removed solder fall onto the wires for the tone arm.

- (5) Remove the 4 screws (602-DJ5500-452).
- (6) Remove the screw (602-ISOF2005-686B).

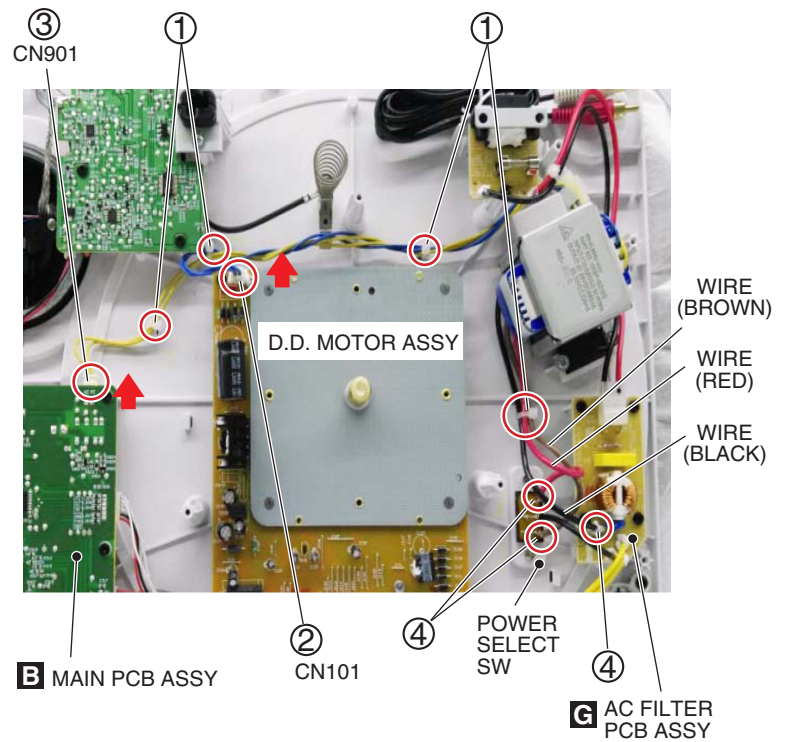


- (7) Disconnect the connector (CN602), and then remove the USB & LI/PH PCB Assy.

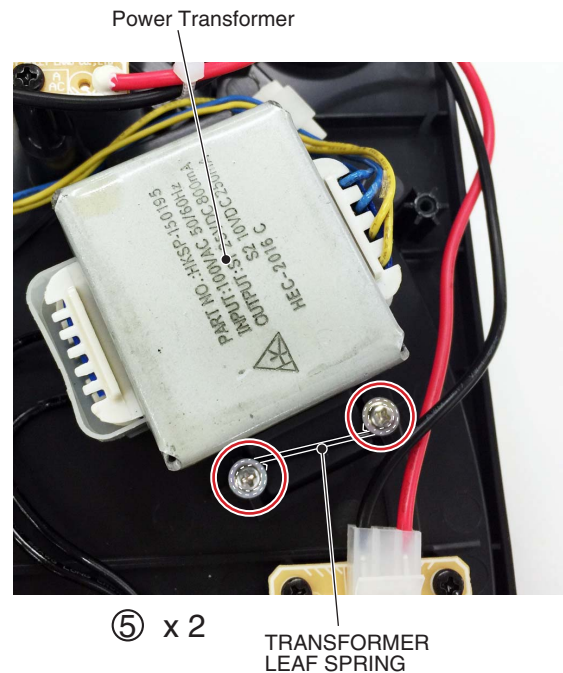


[1-5] Power Transformer

- (1) Cut the 4 cable ties.
- (2) Disconnect the connector (CN101) on the D.D. MOTOR Assy.
- (3) Disconnect the connector (CN901) on the MAIN PCB Assy.
- (4) Disconnect the 2 wires (red, brown) of the POWER SELECT SW.
Disconnect the wire (black) of the AC FILTER PCB Assy.



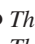
- (5) Remove the 2 screws (602-M400-055), and then remove the TRANSFORMER LEAF SPRING. Remove the POWER TRANSFORMER.



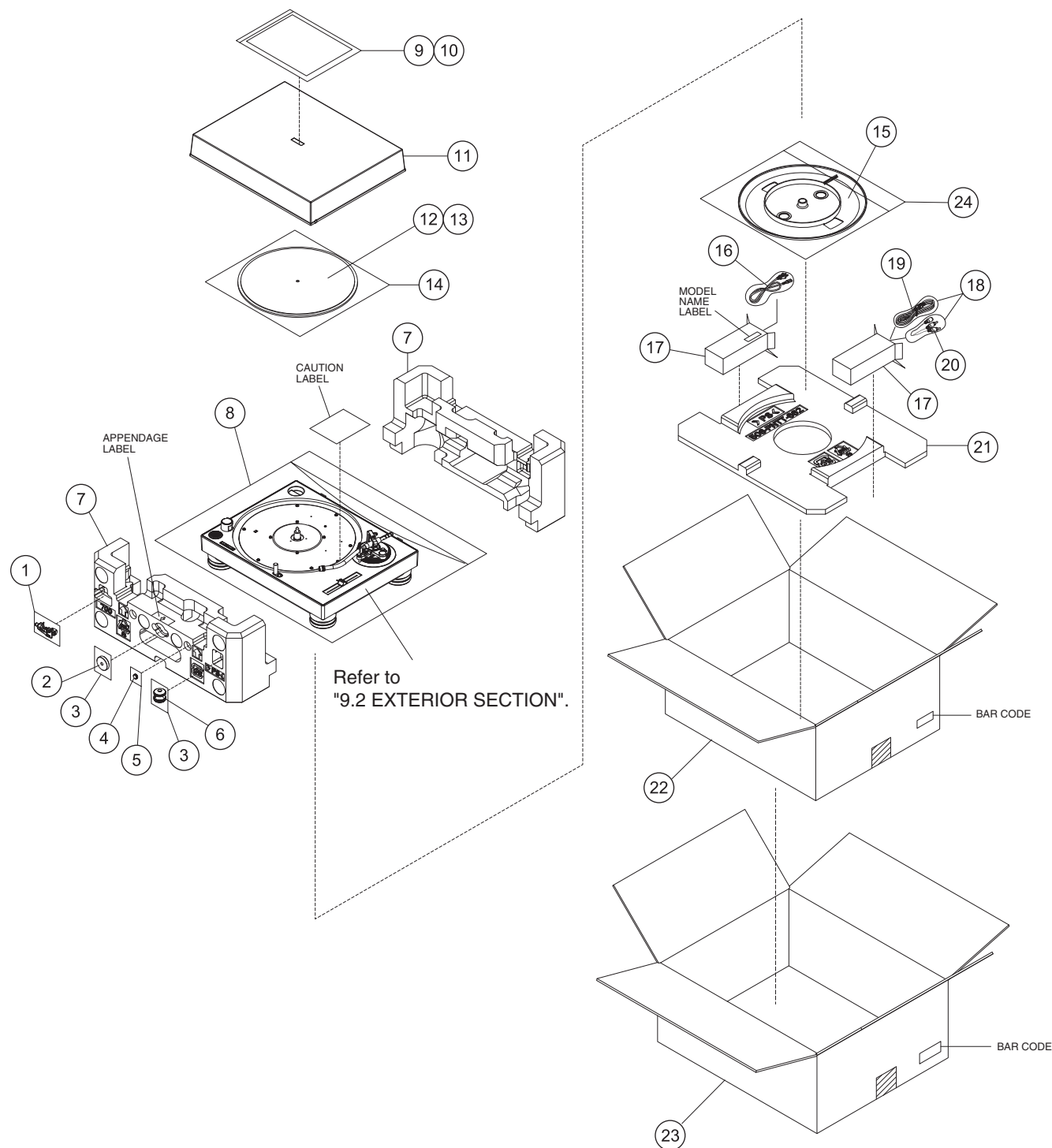
8. EACH SETTING AND ADJUSTMENT

There is no information to be shown in this chapter.

9. EXPLODED VIEWS AND PARTS LIST

- NOTES:
- Parts marked by "NSP" are generally unavailable because they are not in our Master Spare Parts List.
 - The  mark found on some component parts indicates the importance of the safety factor of the part. Therefore, when replacing, be sure to use parts of identical designation.
 - Screws adjacent to ▼ mark on product are used for disassembly.
 - For the applying amount of lubricants or glue, follow the instructions in this manual. (In the case of no amount instructions, apply as you think it appropriate.)

9.1 PACKING SECTION



(1) PACKING SECTION PARTS LIST

Mark No.	Description	Part No.	Mark No.	Description	Part No.	
1	HEADSHEEL & CARTRIDGE ASS'Y	705-PLX500-1649	13	SPACER	507-PNTT-3467	
2	45 RPM ADAPTOR (AL)	200-DJ3000-211	14	POLYBAG FOR SLIPMAT (310 * 400 MM)	505-DJ2500H-092	A
3	POLYBAG (60 * 102 MM) (PB,CD)	505-B300-007	15	ALUMINIUM PLATTER (15 MM)	200-TT100-232C	
4	SCREW	200-ST100-268	16	AC POWER CORD	See Contrast table (2)	
5	POLYBAG (PE, 35 * 50 MM)	505-S15-117	17	BOX (180 * 70 * 50 MM)	507-PLX500-3600	
6	COUNTER WEIGHT ADJUSTOR ASS'Y	702-PLX500-098	18	PLASTIC BAG (120 * 250 MM)	505-B605-017	
7	POLYFOAM	506-PLX500-700	19	USB CABLE (L=1500 MM)	408-SUB-132	
8	SOFT BAG	509-PNTT-332	20	SIGNAL WIRE	408-PL50-068	
9	I/B	See Contrast table (2)	21	POLYFOAM	506-PNTT-662A	B
10	WARRANTY CARD	See Contrast table (2)	22	GIFT BOX	See Contrast table (2)	
11	DUST COVER & HINGE ASS'Y	See Contrast table (2)	23	CARTON	See Contrast table (2)	
12	SLIPMAT	See Contrast table (2)	24	POLYBAG FOR TURNTABLE	505-LP5-001	

(2) CONTRAST TABLE

PLX-500-K/LPWSYXEG, PLX-500-W/LPWSYXEG, PLX-500-K/FWUXEGCB and PLX-500-W/FWUXEGCB are constructed the same except for the following:

Mark	No.	Symbol and Description	PLX-500-K/LPWSYXEG	PLX-500-W/LPWSYXEG
	9	I/B LPWSYXEG	502-PLX500B-3626B	502-PLX500B-3626B
	9	I/B FWUXEGCB	Not used	Not used
	10	WARRANTY CARD	502-SXMK3B-3549	502-SXMK3B-3549
	11	DUST COVER & HINGE ASS'Y K	705-PLX500-1650	Not used
	11	DUST COVER & HINGE ASS'Y W	Not used	705-PLX500W-1651
	12	SLIPMAT K	612-PLX500K-095	Not used
	12	SLIPMAT W	Not used	612-PLX500W-095
⚠	16	AC POWER CORD VDE L=1900	409-DJ2-070A	409-DJ2-070A
⚠	16	AC CORD UL=1900	Not used	Not used
	22	GIFT BOX KB	507-PLX500KB-3601A	Not used
	22	GIFT BOX WB	Not used	507-PLX500WB-3601A
	22	GIFT BOX KA	Not used	Not used
	22	GIFT BOX WA	Not used	Not used
	23	CARTON KB	507-PLX500KB-3602A	Not used
	23	CARTON WB	Not used	507-PLX500WB-3602A
	23	CARTON KA	Not used	Not used
	23	CARTON WA	Not used	Not used

Mark	No.	Symbol and Description	PLX-500-K/FWUXEGCB	PLX-500-W/FWUXEGCB
	9	I/B LPWSYXEG	Not used	Not used
	9	I/B FWUXEGCB	502-PLX500A-3625A	502-PLX500A-3625A
	10	WARRANTY CARD	Not used	Not used
	11	DUST COVER & HINGE ASS'Y K	705-PLX500-1650	Not used
	11	DUST COVER & HINGE ASS'Y W	Not used	705-PLX500W-1651
	12	SLIPMAT K	612-PLX500K-095	Not used
	12	SLIPMAT W	Not used	612-PLX500W-095
⚠	16	AC POWER CORD VDE L=1900	Not used	Not used
⚠	16	AC CORD UL=1900	409-DJ2-069A	409-DJ2-069A
	22	GIFT BOX KB	Not used	Not used
	22	GIFT BOX WB	Not used	Not used
	22	GIFT BOX KA	507-PLX500KA-3601	Not used
	22	GIFT BOX WA	Not used	507-PLX500WA-3601
	23	CARTON KB	Not used	Not used
	23	CARTON WB	Not used	Not used
	23	CARTON KA	507-PLX500KA-3602	Not used
	23	CARTON WA	Not used	507-PLX500WA-3602

△



(1) EXTERIOR SECTION PARTS LIST

Mark No.	Description	Part No.	Mark No.	Description	Part No.	
1	BASE ASS'Y	See Contrast table (2)	46	FIXED PLATE	300-PLX500-2279	A
2	FOOT & WASHER ASS'Y	701-PLX500-5673	47	SHIELDING PLATE	300-PLX500-2280	
3	HINGE ASS'Y	701-PLX500-5704	48	SLIDE SW (L21-22A8, 6P)	403-HS100-042	
4	•••••		49	GROUNDING METAL NET	407-DJ100-135	
5	•••••		50	TRANSFORMER (AC115/230 V)	411-PLX500-989	
6	UP/DOWN FIXED ASS'Y	703-DJ3000-279	51	NUT	601-SL24F-010	
7	SWITCH & FIX PLATE ASS' Y	704-BJ2300-1616	52	TRANSFORMER LEAF SPRING	603-DJ1900-136	
8	MAIN PCB ASS'Y	704-PLX500-B516	53	SPOT LIGHT SPRING (BLACK)	603-DJ1900-137	
9	USB & LI/PH PCB ASS'Y	704-PLX500-B518	54	LEAF SPRING	603-DJ1900-138	
10	33/45 RPM PCB ASS'Y	704-PLX500-B520	55	SPOT LIGHT BUTTON SPRING	603-DJ1900-139	B
⚠	11 AC FILTER PCB ASS'Y	704-PLX500-B521	56	SPRING FOR LAMP	603-DJ1900-239	
⚠	12 PLAY PCB ASS'Y	704-PLX500-B522	57	SPRING FOR BOTTOM BASE	603-DJ5500-281	
	13 AC SOCKET PCB ASS'Y	704-PLX500-B524	58	LOCKING CABLE CLIP	300-HM510B-224	
	14 D.D. MOTOR PAKING ASS'Y	705-PLX500-1652	59	CUSHION RUBBER FOR TRANSFORMER	604-PLX500-064	
	15 SINGALGNAL WIRE ASS' Y	704-PLX500-B527	60	MUTE CUSHION (RUBBER)	604-DJ1900-066A	
	16 CORD BUSH	100-HC1421FR-991	61	RUBBER FOR TONEARM BOTTOM BASE	604-PROTT2-178	
	17 FIXED PLATE	300-DJ3000-565	62	RUBBER	604-PLX500-686	C
	18 RCA CORD (L=1200 MM)	408-HPR200-092	63	WASHER (5.5 * 3 * 0.7 MM)	606-B300-039	
	19 SEARCHLIGHT ASS'Y	704-PLX500-B528	64	MUTE CUSHION (EVA BLACK)	612-DJ1900-013	
	20 •••••		65	CUSHION	612-BJ1900-062	
	21 STROBOSCOPE ASS'Y	See Contrast table (2)	66	SCREW (DIA.3 * 10, PTP)	602-M400-055	
	22 POWER KNOB AND SHAFT ASS'Y	701-PLX500-1649	67	SCREW (PTP3 * 8)	602-B600-057	
	23 STOP/STARTS BUTTON A	701-PNTT-5360	68	SCREW	602-B600-058	
	24 SPOTLIGHT BASE ASS'Y	See Contrast table (2)	69	SCREW	602-SL24F-099	
	25 33 KNOB AND LENS ASS' Y	See Contrast table (2)	70	SCREW (3 * 6, TTP)	602-B752-103	
	26 45 KNOB AND LENS ASS' Y	See Contrast table (2)	71	SCREW	602-3113-120	D
	27 STROBOSCOPE PCB ASS'Y	704-PLX500-B526	72	SCREW (TTP 3 * 12)	602-DD3250-121	
	28 TUNING SHAFT (POWER)	100-DJ2500-1292	73	SCREW	602-DJ3000-272	
	29 SPOTLIGHT HOLDER (SELVER)	100-PLX500-1461A	74	SCREW (3 * 16 P=0.5)	602-BJ1900-299	
	30 TRANSPARENT SHEET (PVC, T=0. 3 MM)	501-DJ3000-1149	75	SCREW	602-STR885-354	
	31 SPRING	603-PNTT-403	76	SCREW (M4 * 10 * P0.7)	602-RP5000-412	
	32 E-RING WASHER 3 MM	606-F200-011-HA	77	SCREW (TTP, 3 * 8, ZB)	602-DJ5500-452	
	33 STEEL BALL	607-B600-002	78	SCREW	602-HPTB310-797	
	34 SPACER FOR NOISE ELIMINATION	612-PNTT-508	79	SCREW	602-PTS308-732B	
	35 SPACER FOR NOISE ELIMINATION	612-ST150-150	80	•••••		E
	36 HINGE SLIDE	100-DJ3000-1350	81	WASHER	606-DDJLE-260	
	37 SPEED PUSH BUTTON	See Contrast table (2)	82	SCREW	602-WBTB306-795N	
	38 REFLECTOR	100-PNTT-3103	83	SCREW	602-ISOF2005-686B	
	39 TOP PANEL PACKING ASS'Y	See Contrast table (2)	84	TONEARM LIFTER ASS'Y	701-PROTT2-2103	
	40 SPOT LIGHT BUTTON	See Contrast table (2)	85	HEADSHELL ASS'Y	703-PLX500-1411	
	41 FIXED AXES	200-DJ1900-159A	86	CLUTH LEVER KNOB	100-DJ3000-1313	
	42 SPOTLIGHT COVER	See Contrast table (2)	87	PICK-UP CRAMPER	100-PROTT2-1632	
	43 BOTTOM PLATE	300-DJ3000-575B	88	CARTRIDGE (AT3600LX, CN-6531)	402-PLX500-119	
	44 MOTOR FIXED PLATE	300-PLX500-687B	89	NUT (M2.6 * P0.45 * T1.8)	601-M26P045-031	F
	45 GROUND PLATE	300-DJFA-1814				

<u>Mark No.</u>	<u>Description</u>	<u>Part No.</u>
90	WASHER FOR STYLUS (MYLAR, FAI_4.5 * 2.6 * 0.35T)	606-STYLUS-229A
91	SCREW (M2.6 * P0.46 * L16)	602-M2616-780
92	SCREW (TTP DIA2 * 8)	602-DJ3000-269
93	TONE ARM PACKING ASS'Y	705-PLX500-1653
94	STYLUS PACKING ASS'Y	705-FU704-1336
95	SCREW	602-SA12-380-HA

(2) CONTRAST TABLE

PLX-500-K/LPWSYXEG, PLX-500-W/LPWSYXEG, PLX-500-K/FWUXEGCB and PLX-500-W/FWUXEGCB are constructed the same except for the following:

<u>Mark</u>	<u>No.</u>	<u>Symbol and Description</u>	<u>PLX-500-K/LPWSYXEG</u>	<u>PLX-500-W/LPWSYXEG</u>
	1	BASE ASS'Y K	701-PLX500-5669	Not used
	1	BASE ASS'Y W	Not used	701-PLX500W-5669
	21	STROBOSCOPE ASS'Y K	704-PLX500-B534	Not used
	21	STROBOSCOPE ASS'Y W	Not used	704-PLX500W-B535
	24	SPOTLIGHT BASE ASS'Y K	701-PLX500-5668S	Not used
	24	SPOTLIGHT BASE ASS'Y W	Not used	701-PLX500W-5668
	25	33 KNOB AND LENS ASS'Y K	701-PLX500-5714	Not used
	25	33 KNOB AND LENS ASS'Y W	Not used	701-PLX500W-5714
	26	45 KNOB AND LENS ASS'Y K	701-PLX500-5715	Not used
	26	45 KNOB AND LENS ASS'Y W	Not used	701-PLX500W-5715
	37	SPEED PUSH BUTTON K	100-PLX500-2017	Not used
	37	SPEED PUSH BUTTON W	Not used	100-PLX500W-2017
	39	TOP PANEL PACKING ASS'Y K	705-PLX500K-1655	Not used
	39	TOP PANEL PACKING ASS'Y W	Not used	705-PLX500W-1656
	40	SPOT LIGHT BUTTON K	200-BJ30G1-157	Not used
	40	SPOT LIGHT BUTTON W	Not used	200-DJ1900-157
	42	SPOTLIGHT COVER K	200-PLX500-799	Not used
	42	SPOTLIGHT COVER W	Not used	200-PLX500W-799

<u>Mark</u>	<u>No.</u>	<u>Symbol and Description</u>	<u>PLX-500-K/FWUXEGCB</u>	<u>PLX-500-W/FWUXEGCB</u>
	1	BASE ASS'Y K	701-PLX500-5669	Not used
	1	BASE ASS'Y W	Not used	701-PLX500W-5669
	21	STROBOSCOPE ASS'Y K	704-PLX500-B534	Not used
	21	STROBOSCOPE ASS'Y W	Not used	704-PLX500W-B535
	24	SPOTLIGHT BASE ASS'Y K	701-PLX500-5668S	Not used
	24	SPOTLIGHT BASE ASS'Y W	Not used	701-PLX500W-5668
	25	33 KNOB AND LENS ASS'Y K	701-PLX500-5714	Not used
	25	33 KNOB AND LENS ASS'Y W	Not used	701-PLX500W-5714
	26	45 KNOB AND LENS ASS'Y K	701-PLX500-5715	Not used
	26	45 KNOB AND LENS ASS'Y W	Not used	701-PLX500W-5715
	37	SPEED PUSH BUTTON K	100-PLX500-2017	Not used
	37	SPEED PUSH BUTTON W	Not used	100-PLX500W-2017
	39	TOP PANEL PACKING ASS'Y K	705-PLX500K-1655	Not used
	39	TOP PANEL PACKING ASS'Y W	Not used	705-PLX500W-1656
	40	SPOT LIGHT BUTTON K	200-BJ30G1-157	Not used
	40	SPOT LIGHT BUTTON W	Not used	200-DJ1900-157
	42	SPOTLIGHT COVER K	200-PLX500-799	Not used
	42	SPOTLIGHT COVER W	Not used	200-PLX500W-799