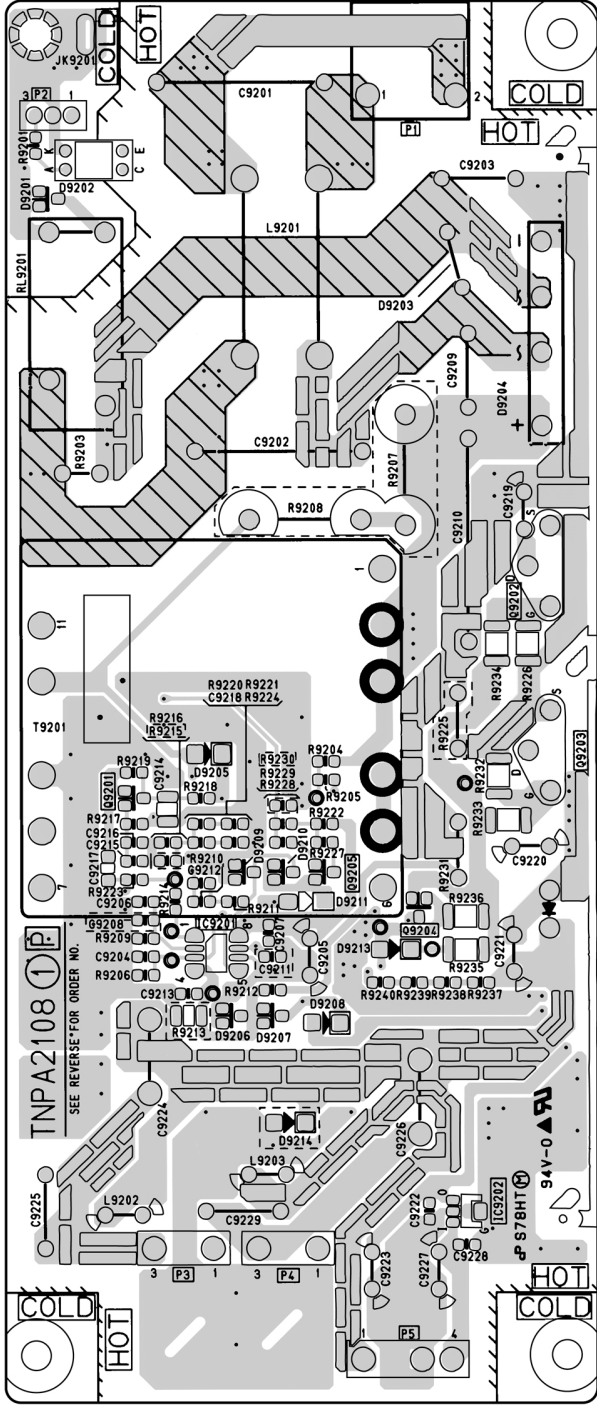


P-P.C.Board TNPA2108  
(Foil Side)

| P-P.C.Board(Foil Side) |     |       |     |
|------------------------|-----|-------|-----|
| IC                     |     | Q9202 | C-2 |
| IC9201                 | B-1 | Q9203 | C-2 |
| IC9202                 | A-2 | Q9204 | B-2 |
| TRANSISTOR             |     | Q9205 | B-2 |
| Q9201                  | C-1 |       |     |

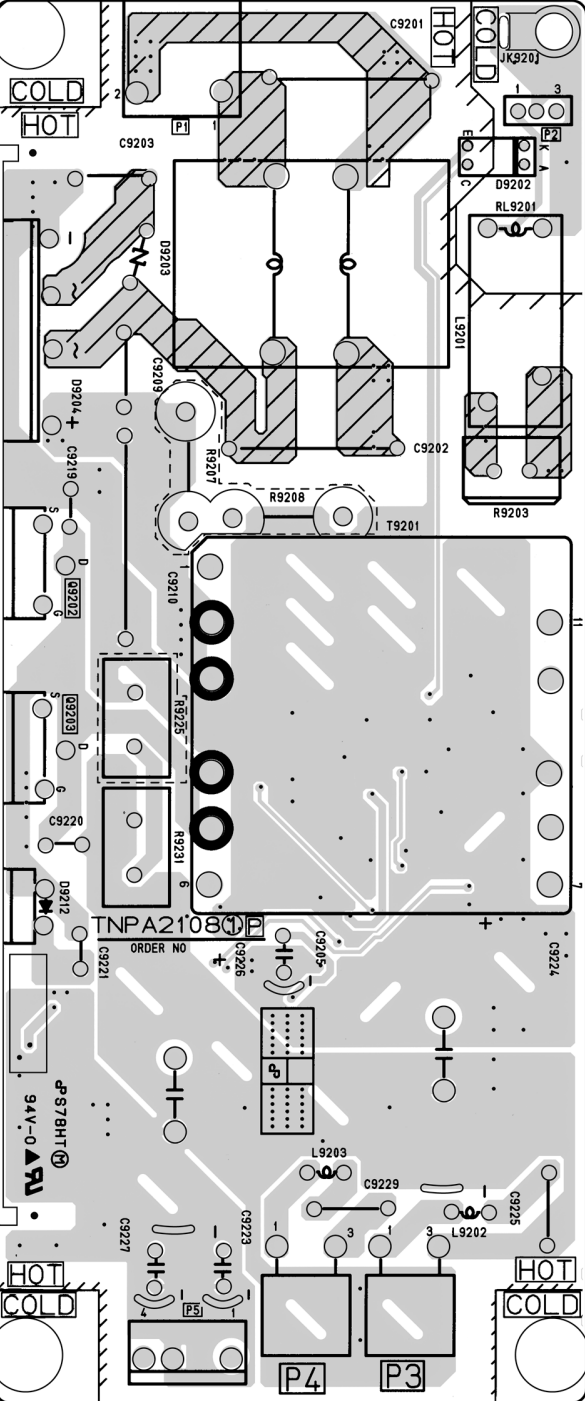
ADDRESS INFORMATION



P-P.C.Board TNPA2108  
(Component Side)

| P-P.C.Board<br>(Component Side) |     |
|---------------------------------|-----|
| TRANSISTOR                      |     |
| Q9202                           | C-3 |
| Q9203                           | C-3 |

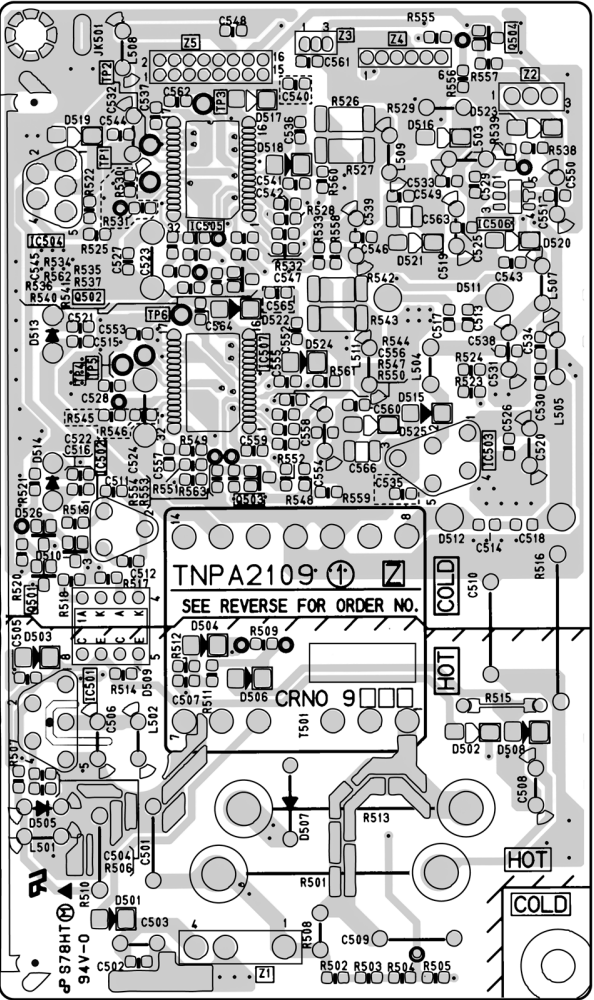
ADDRESS INFORMATION



Z-P.C.Board TNPA2109  
(Foil Side)

| Z-P.C.Board(Foil Side) |     |        |     |
|------------------------|-----|--------|-----|
| IC                     |     | IC9507 | C-6 |
| TRANSISTOR             |     | Q9501  | B-5 |
| IC9501                 | B-5 | Q9502  | C-6 |
| IC9502                 | B-5 | Q9503  | B-6 |
| IC9503                 | C-7 | Q9504  | D-7 |
| IC9504                 | C-5 |        |     |
| IC9505                 | C-6 |        |     |
| IC9506                 | C-7 |        |     |

ADDRESS INFORMATION



Z-P.C.Board TNPA2109  
(Component Side)

| Z-P.C.Board<br>(Component Side) |     |
|---------------------------------|-----|
| IC                              |     |
| IC9501                          | B-9 |
| IC9502                          | B-9 |
| IC9503                          | C-8 |
| IC9504                          | C-9 |

ADDRESS INFORMATION

