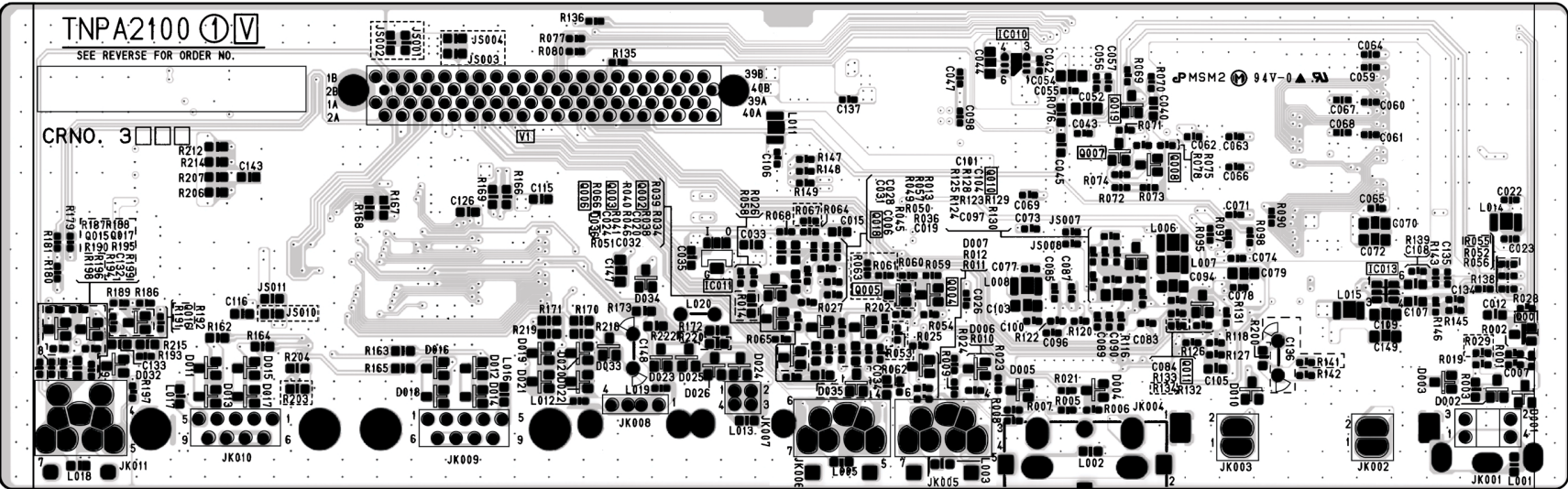


V-P.C.Board TNPA2100  
(Foil Side)

V-P.C.Board(Foil Side)							
IC		TRANSISTOR		Q3006		Q3018	
IC3010	E-4	Q3001	D-6	Q3007	E-5	Q3019	E-5
IC3011	D-3	Q3002	D-4	Q3008	E-5		
IC3013	D-6	Q3003	D-4	Q3010	D-5		
		Q3004	D-4	Q3011	D-5		

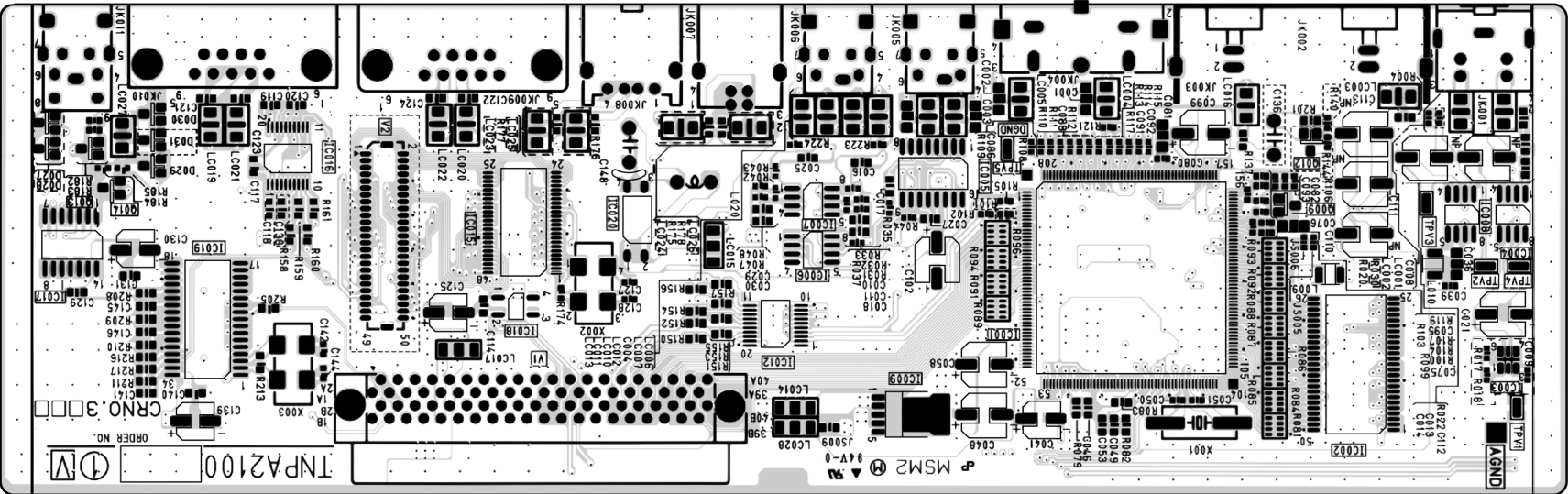
ADDRESS INFORMATION



V-P.C.Board TNPA2100  
(Component Side)

V-P.C.Board(Component Side)									
IC		IC3006		IC3015		IC3020		TP	
IC3001	A-5	IC3007	B-4	IC3016	B-2	TRANSISTOR		TPV1	A-6
IC3002	A-6	IC3008	B-6	IC3017	B-1	Q3009	B-5	TPV2	A-6
IC3004	B-6	IC3009	A-4	IC3018	A-3	Q3013	B-1	TPV3	B-6
IC3005	B-4	IC3012	A-4	IC3019	A-1	Q3014	B-1	TPV4	A-6

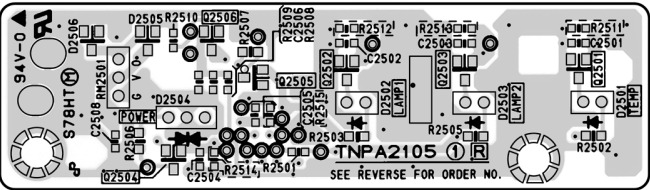
ADDRESS INFORMATION



R-P.C.Board TNPA2105  
(Foil Side)

R-P.C.Board(Foil Side)			
TRANSISTOR		Q2504	E-7
Q2501	E-9	Q2505	E-8
Q2502	E-8	Q2506	E-8
Q2503	E-8		

ADDRESS INFORMATION



R-P.C.Board TNPA2105  
(Component Side)

