

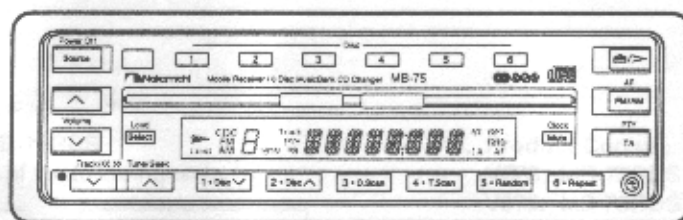
CONTENTS

1. General	2
2. Mechanism Assy	5
2.1. Synthesizer	5
2.2. Front Panel	7
3. Mounting Diagram	8
3.1. Main P.C.B.	8
3.2. Front P.C.B.	12
4. Schematic Diagram	

Service Manual

Mobile Tuner / 6 Disc Music-
Bank CD Changer

MB-75RDS



Depending on the color, this option is available as follows:

Front Panel: Red / LCD: Green / LCD: Blue /
Front Panel: Blue / LCD: Green / LCD: Blue

LCD



The MB-75RDS Service Manual describes the different points from the issued MB-75. For other information not described in this Service Manual, please refer to the MB-75 Service Manual.

MB-75RDS is the model which supports the RDS system. Except for the RDS system, MB-75RDS is basically the same as MB-75.

MECHANISM ASS'Y AND PARTS LIST

1.6. Package and Accessory Ass'y

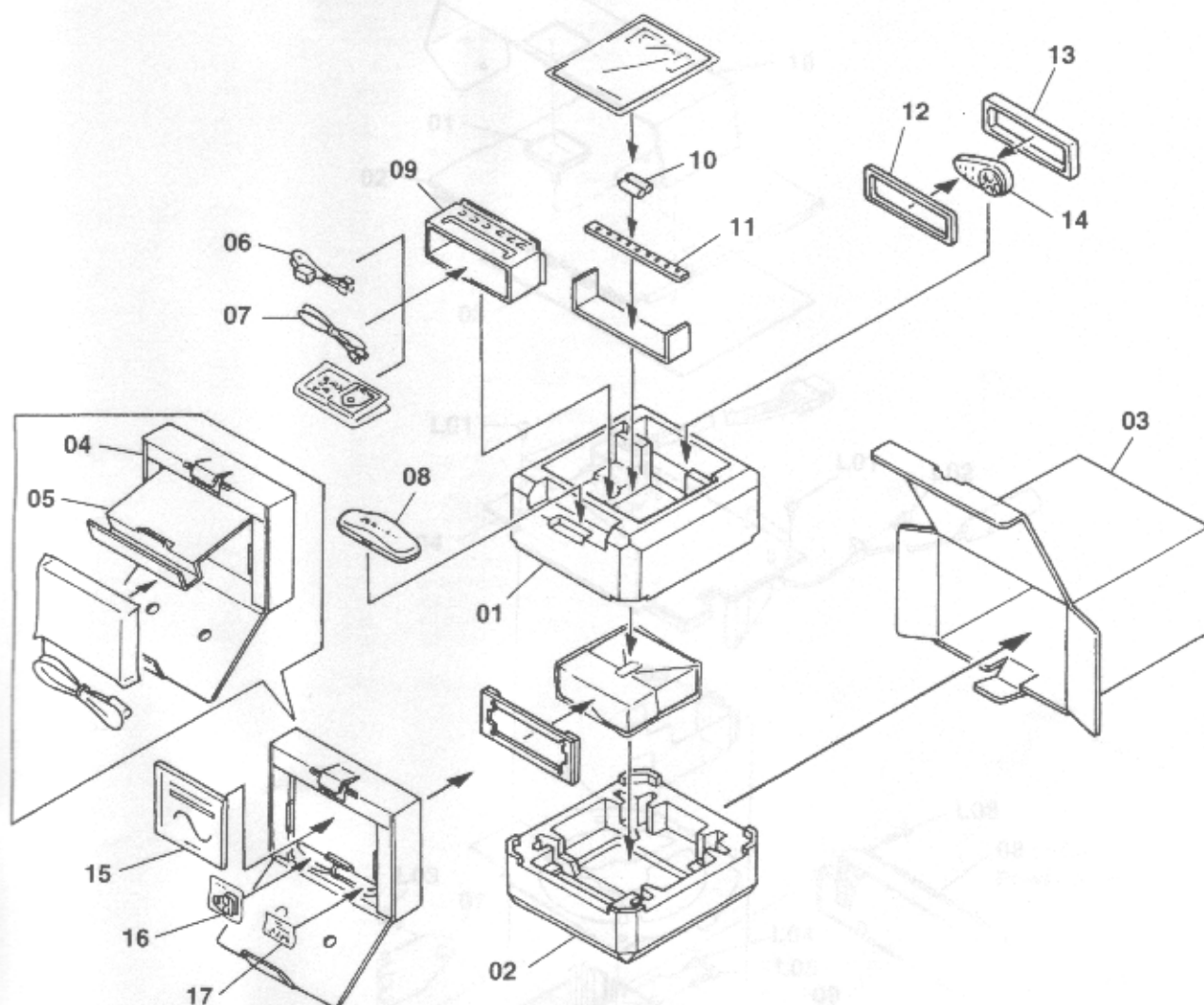


Fig. 1.2

Schematic Ref. No.	Part No.	Description	Q'ty
—	—	Package and Accessory Ass'y	—
03	0F05449A	Inner Carton	1
06	0H07553C	Carrying Case	1
12	DA05377A	Remote Ass'y	1
—	0J08038A	Carrying Cushion	1
—	0D07190A	Owner's Manual (German/Spanish)	1

2. MECHANISM ASS'Y AND PARTS LIST

2.1. Synthesis

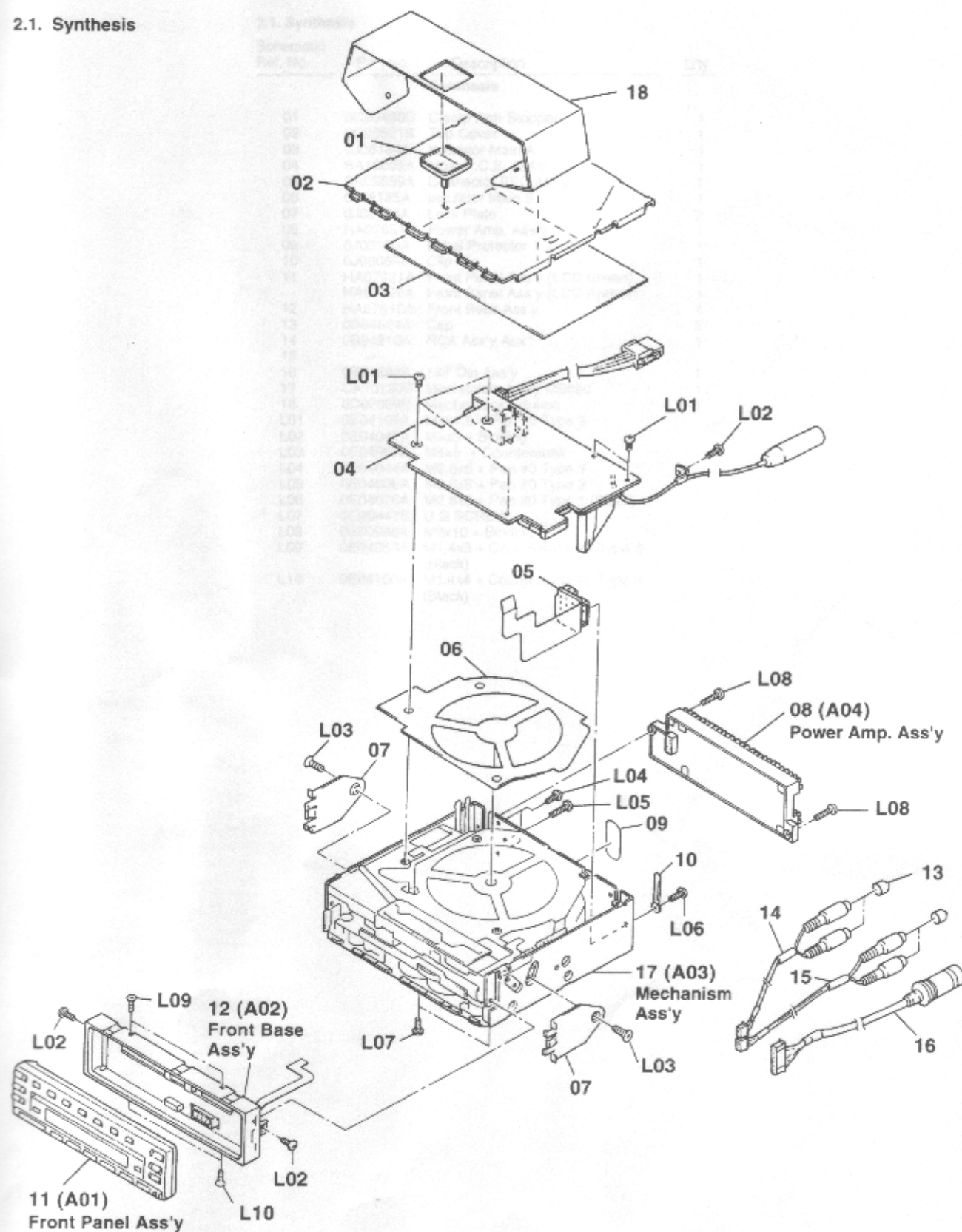


Fig. 2.1

Front Panel Ass'y (A01)

2.1. Synthesis

Schematic Ref. No.	Part No.	Description	Q'ty
Synthesis			
01	0C20480D	Clamp Arm Stopper	1
02	0C20521B	Top Cover	1
03	0J08184A	Insulator Main A	1
04	BA10069A	Main P.C.B. Ass'y	1
05	BA09859A	Connector FPC Ass'y	1
06	0J08185A	Insulator Main B	1
07	0J08124A	Lock Plate	2
08	HA07651A	Power Amp. Ass'y	1
09	0J08196A	Label Protector	1
10	0J06068A	Clip	1
11	HA07921A	Front Panel Ass'y (LCD Green)	1
	HA07928A	Front Panel Ass'y (LCD Amber)	1
12	HA07610A	Front Base Ass'y	1
13	0B84524A	Cap	2
14	0B84910A	RCA Ass'y Aux1	1
15	—	—	—
16	0B84893B	13P Din Ass'y	1
17	CA10130B	Mechanism Ass'y MB650	1
18	0D07059B	Mecha Lock Caution	1
L01	0E04109A	M2x1.8 + Pan #0 Type 2	
L02	0E04047A	M3x3 + Binding	
L03	0E04057A	M5x6 + Countersunk	
L04	0E04044A	M2.6x5 + Pan #0 Type 3	
L05	0E04036A	M2.6x8 + Pan #0 Type 3	
L06	0E04076A	M2.6x3 + Pan #0 Type 1 (Black)	
L07	0C20447B	U G SCREW	
L08	0E00986A	M3x10 + Binding	
L09	0E04053A	M1.4x3 + Countersunk #0 Type 3 (Black)	
L10	0E04100A	M1.4x4 + Countersunk #0 Type 3 (Black)	

Fig. 22

Front Panel Ass'y (A01)

Part No.	Description	Q'ty	Schematic Ref. No.	Description	Q'ty
0C20480D	Clamp Arm Stopper	1	A01	FRONT PANEL ASS'Y	1
0C20521B	Top Cover	1			
0J08184A	Insulator Main A	1			
BA10069A	Main P.C.B. Ass'y	1			
BA09859A	Connector FPC Ass'y	1			
0J08185A	Insulator Main B	1			
0J08124A	Lock Plate	2			
HA07651A	Power Amp. Ass'y	1			
0J08196A	Label Protector	1			
0J06068A	Clip	1			
HA07921A	Front Panel Ass'y (LCD Green)	1			
HA07928A	Front Panel Ass'y (LCD Amber)	1			
HA07610A	Front Base Ass'y	1			
0B84524A	Cap	2			
0B84910A	RCA Ass'y Aux1	1			
—	—	—			
0B84893B	13P Din Ass'y	1			
CA10130B	Mechanism Ass'y MB650	1			
0D07059B	Mecha Lock Caution	1			
0E04109A	M2x1.8 + Pan #0 Type 2				
0E04047A	M3x3 + Binding				
0E04057A	M5x6 + Countersunk				
0E04044A	M2.6x5 + Pan #0 Type 3				
0E04036A	M2.6x8 + Pan #0 Type 3				
0E04076A	M2.6x3 + Pan #0 Type 1 (Black)				
0C20447B	U G SCREW				
0E00986A	M3x10 + Binding				
0E04053A	M1.4x3 + Countersunk #0 Type 3 (Black)				
0E04100A	M1.4x4 + Countersunk #0 Type 3 (Black)				

MOUNTING DIAGRAMS AND PART LIST

2.2. Front Panel Ass'y (A01)

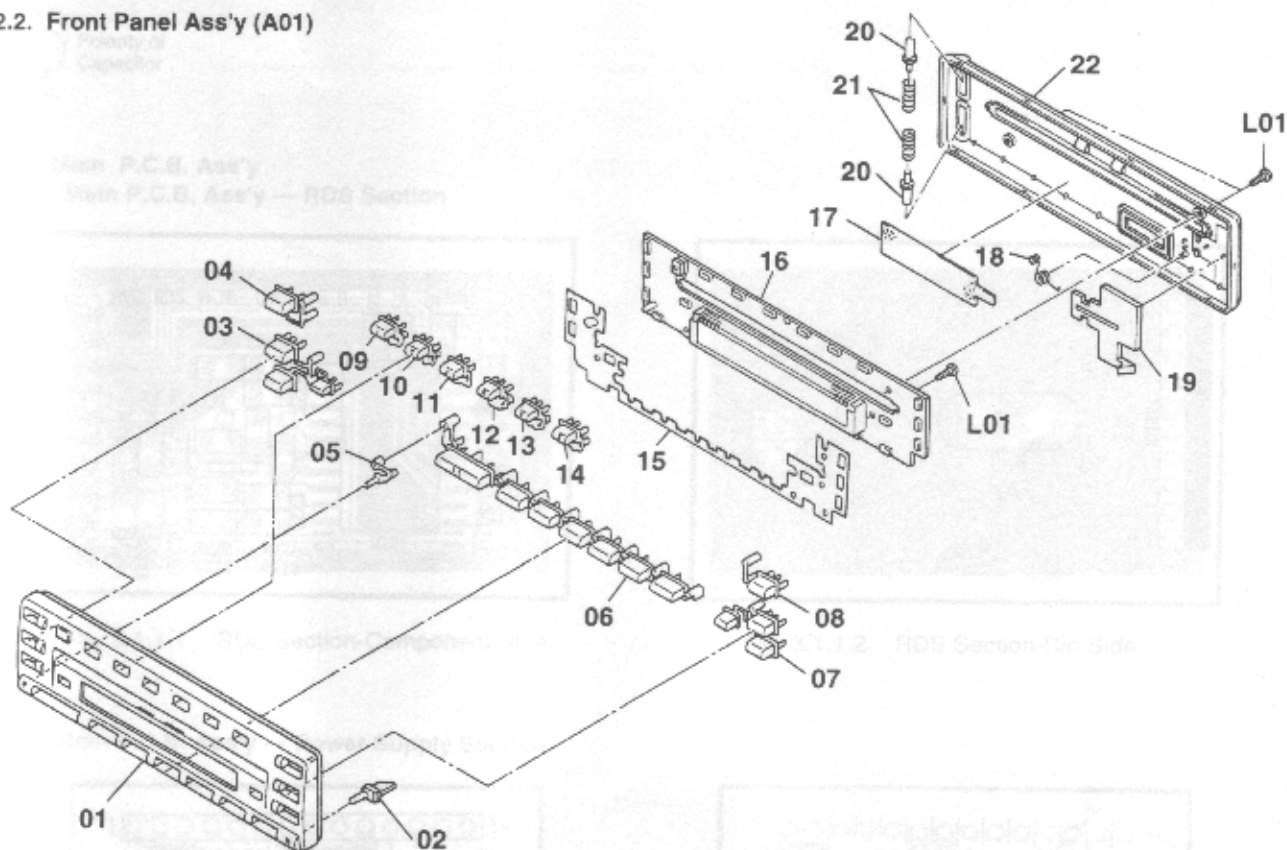


Fig. 2.2

2.2. Front Panel Ass'y (A01)

Schematic Ref. No.	Part No.	Description	Q'ty
A01	HA07921A	Front Panel Ass'y (LCD Green)	1
01	0H08304A	Front Panel	1
02	0H07802A	Release Knob	1
03	0H07792A	Up Dn Knob	1
04	0H07790A	Source Knob	1
05	0H07809A	Reset Knob	1
06	0H07797A	Preset Knob	1
07	0H08305A	TU TA Knob	1
08	0H07793A	Eject Knob	1
09	0H07784D	Disc Select Knob 1	1
10	0H07785D	Disc Select Knob 2	1
11	0H07786D	Disc Select Knob 3	1
12	0H07787D	Disc Select Knob 4	1
13	0H07788D	Disc Select Knob 5	1
14	0H07789D	Disc Select Knob 6	1
15	—	—	—
16	BA10068A	Front P.C.B. Ass'y (LCD Green)	1
17	QJ08194B	Conductor Sheet B	1
18	QJ08120A	Release Spring	1
19	QJ08160A	Lock Arm R	1
20	QJ08161A	Lock Pin L	2
21	QJ08162B	Lock Spring L	2
22	0H07749E	Rear Cover	1
—	0H07803A	Disc Lens	2
—	0H07804A	Rem Lens	1
—	0H07805B	LCD Lens	1
—	QJ08169A	CD Protector Sub	1
—	QJ08174A	W Face Rem Lens	1
—	QJ08205A	Label Reflector	6
—	QJ08242A	LCD Lens W Face	2
L01	DE03814A	PT2x8 + Binding (Black)	2

Schematic Ref. No.	Part No.	Description	Q'ty
A01	HA07928A	Front Panel Ass'y (LCD Amber)	1
01	0H08304A	Front Panel	1
02	0H07802A	Release Knob	1
03	0H07792A	Up Dn Knob	1
04	0H07790A	Source Knob	1
05	0H07809A	Reset Knob	1
06	0H07797A	Preset Knob	1
07	0H08305A	TU TA Knob	1
08	0H07793A	Eject Knob	1
09	0H07784D	Disc Select Knob 1	1
10	0H07785D	Disc Select Knob 2	1
11	0H07786D	Disc Select Knob 3	1
12	0H07787D	Disc Select Knob 4	1
13	0H07788D	Disc Select Knob 5	1
14	0H07789D	Disc Select Knob 6	1
15	QJ08165A	LED Filter	1
16	BA10070A	Front P.C.B. Ass'y (LCD Amber)	1
17	QJ08194B	Conductor Sheet B	1
18	QJ08120A	Release Spring	1
19	QJ08160A	Lock Arm R	1
20	QJ08161A	Lock Pin L	2
21	QJ08162B	Lock Spring L	2
22	0H07749E	Rear Cover	1
—	0H07803A	Disc Lens	2
—	0H07804A	Rem Lens	1
—	0H07805B	LCD Lens	1
—	QJ08169A	CD Protector Sub	1
—	QJ08174A	W Face Rem Lens	1
—	QJ08205A	Label Reflector	6
—	QJ08242A	LCD Lens W Face	2
L01	DE03814A	PT2x8 + Binding (Black)	2

NOTES: 1. Abbreviations

TR – Transistor, SID – Silicon Diode, ZD – Zener Diode, Varicap – Variable Capacitance Diode

RK – Carbon Resistor, RM – Metal Film Resistor, RF – Fail Safe Type Resistor, RC – Cement Resistor

CE – Electrolytic Capacitor, CML – Mylar Capacitor, CC – Ceramic Capacitor, CPP – PP Capacitor.

CMM – Metalized Mylar Capacitor, CSP – Polystyrene Capacitor, C – Mica Capacitor.

CT – Tantalum Capacitor

2. Description of capacitor: $10\ 16V = 10\mu\ 16V$

3. Parts marked with * show chip parts.

3.1. Main P.C.B. Ass'y

3.1. Main P.C.B. Ass'y			Schematic			Schematic		
Schematic Ref. No.	Part No.	Description	Ref. No.	Part No.	Description	Ref. No.	Part No.	Description
	BA10069A	Main P.C.B. Ass'y	ZD506,507	0B10482A	ZD RD5.1UJN2*	R507,508	0B25587A	RK 100K 1/10W J*
			ZD508,509	0B10482A	ZD RD5.1UJN2*	R509	0B25611A	RK 1M 1/10W J*
			ZD510	0B10482A	ZD RD5.1UJN2*	R510	0B25587A	RK 100K 1/10W J*
			ZD518	0B10482A	ZD RD5.1UJN2*	R511	0B25579A	RK 47K 1/10W J*
			D401,402	0B10539A	SID MA152WK*	R512	0B25587A	RK 100K 1/10W J*
			D451	0B10539A	SID MA152WK*	R513	0B25579A	RK 47K 1/10W J*
			D501,502	0B10539A	SID MA152WK*	R514	0B25587A	RK 100K 1/10W J*
			D503,504	0B10539A	SID MA152WK*	R515	0B25603A	RK 470K 1/10W J*
			D507	0B10730A	DI MA159A*	R516	0B25587A	RK 100K 1/10W J*
			X501	0B90795A	Resonator 16.00M*	R517,518	0B25515A	RK 100 1/10WJ
			X502	0B90693A	X'tal 32.768KHz	R519,520	0B25515A	RK 100 1/10WJ *
D403	0B10946A	D 1SR154-400*	J301L,R	0B25612A	RK 0 1/10W J*	R521	0B25515A	RK 100 1/10WJ *
D406,407	0B10946A	D 1SR154-400*	R205	0B25612A	RK 0 1/10W J*	R522,523	0B25539A	RK 1K 1/10W J*
D408	0B10946A	D 1SR154-400*	R206	0B25579A	RK 47K 1/10W J*	R524,525	0B25587A	RK 100K 1/10W J*
C402	0B42786A	CE 470 16V*	R217L,R	0B25563A	RK 10K 1/10W J*	R526	0B25563A	RK 10K 1/10W J*
C408	0B43092A	CC 0.1 25V Z*	R228	0B25563A	RK 10K 1/10W J*	R527	0B25539A	RK 1K 1/10W J*
CN901	0B84924A	Con Header 14P	R229	0B25515A	RK 100 1/10W J*	R528	0B25563A	RK 10K 1/10W J*
CN904	0B84861A	BB Connector Plug 10P	R301L,R	0B25531A	RK 470 1/10W J*	R529,530	0B25539A	RK 1K 1/10W J*
	0B64885B	6P W Ass'y Plug (1)	R302L,R	0B25531A	RK 470 1/10W J*	R531,532	0B25539A	RK 1K 1/10W J*
	0E04046A	M2.6x3 + Pan #0 Type 3 (1)	R305L,R	0B25579A	RK 47K 1/10W J*	R534,535	0B25563A	RK 10K 1/10W J*
			R306L,R	0B25579A	RK 47K 1/10W J*	R537	0B25587A	RK 100K 1/10W J*
			R307L,R	0B25532A	RK 510 1/10W J*	R538	0B25547A	RK 2.2K 1/10W J*
			R308L,R	0B25532A	RK 510 1/10W J*	R539	0B25539A	RK 1K 1/10W J*
			R309L,R	0B25611A	RK 1M 1/10W J*	R540	0B21444A	RM 10M 1/10W F*
			R311L,R	0B25612A	RK 0 1/10W J*	R541	0B21445A	RM 180K 1/10W F*
			R312L,R	0B25612A	RK 0 1/10W J*	R542	0B25563A	RK 10K 1/10W J*
			R319L,R	0B25539A	RK 1K 1/10W J*	R543	0B25539A	RK 1K 1/10W J*
			R320L,R	0B25539A	RK 1K 1/10W J*	R544	0B25563A	RK 10K 1/10W J*
			R321L,R	0B25539A	RK 1K 1/10W J*	R545	0B25539A	RK 1K 1/10W J*
			R322L,R	0B25587A	RK 100K 1/10W J*	R547,548	0B25563A	RK 10K 1/10W J*
			R323L,R	0B25587A	RK 100K 1/10W J*	R549,550	0B25563A	RK 10K 1/10W J*
			R331,332	0B25563A	RK 10K 1/10W J*	R551,552	0B25563A	RK 10K 1/10W J*
			R333	0B25563A	RK 10K 1/10W J*	R553,554	0B25563A	RK 10K 1/10W J*
			R401	0B25563A	RK 10K 1/10W J*	R555,556	0B25563A	RK 10K 1/10W J*
			R402	0B21631A	RK 10 1/4W J*	R557,558	0B25563A	RK 10K 1/10W J*
			R403	0B25551A	RK 3.3K 1/10W J*	R559,560	0B25563A	RK 10K 1/10W J*
			R404	0B25523A	RK 220 1/10W J*	R561	0B25563A	RK 10K 1/10W J*
			R405	0B25563A	RK 10K 1/10W J*	R562,563	0B25579A	RK 47K 1/10W J*
			R406	0B21632A	RK 3.3 1/2W J*	R564,565	0B25579A	RK 47K 1/10W J*
			R407	0B25551A	RK 3.3K 1/10W J*	R566,567	0B25579A	RK 47K 1/10W J*
			R408	0B25515A	RK 100 1/10W J*	R568,569	0B25579A	RK 47K 1/10W J*
			R409	0B25555A	RK 4.7K 1/10W J*	R570,571	0B25579A	RK 47K 1/10W J*
			R410	0B25515A	RK 100 1/10W J*	R572,573	0B25579A	RK 47K 1/10W J*
			R411	0B25563A	RK 10K 1/10W J*	R574,575	0B25579A	RK 47K 1/10W J*
			R412	0B21633A	RK 3.3 1W J*	R576,577	0B25587A	RK 100K 1/10W J*
			R413	0B25563A	RK 10K 1/10W J*	R578,579	0B25587A	RK 100K 1/10W J*
			R414	0B25515A	RK 100 1/10W J*	R580,581	0B25587A	RK 100K 1/10W J*
			R415	0B25563A	RK 10K 1/10W J*	R582	0B25579A	RK 47K 1/10W J*
			R416	0B25527A	RK 330 1/10W J*	R583,584	0B25587A	RK 100K 1/10W J*
			R417	0B25555A	RK 4.7K 1/10W J*	R585,586	0B25587A	RK 100K 1/10W J*
			R418	0B25587A	RK 100K 1/10W J*	R587L,R	0B25587A	RK 100K 1/10W J*
			R420	0B25587A	RK 100K 1/10W J*	R588	0B25587A	RK 100K 1/10W J*
			R422	0B25587A	RK 100K 1/10W J*	R588L,R	0B25587A	RK 100K 1/10W J*
			R423	0B20675A	RK 2.2 1/10W J*	R589	0B25579A	RK 47K 1/10W J*
			R451	0B25563A	RK 10K 1/10W J*	R589L,R	0B25587A	RK 100K 1/10W J*
			R452	0B25539A	RK 1K 1/10W J*	R590,591	0B25587A	RK 100K 1/10W J*
			R453	0B25525A	RK 270 1/10W J*	R592,593	0B25587A	RK 100K 1/10W J*
			R454,455	0B25563A	RK 10K 1/10W J*	R594	0B25587A	RK 100K 1/10W J*
			R456	0B25547A	RK 2.2K 1/10W J*	R595	0B25603A	RK 470K 1/10W J*
			R501,502	0B25563A	RK 10K 1/10W J*	R596,597	0B25587A	RK 100K 1/10W J*
			R503	0B25612A	RK 0 1/10W J*	R598,599	0B25587A	RK 100K 1/10W J*
			R504	0B25571A	RK 22K 1/10W J*	R601	0B25563A	RK 10K 1/10W J*
			R505,506	0B25547A	RK 2.2K 1/10W J*	R605,606	0B25563A	RK 10K 1/10W J*

Schematic					Schematic					Schematic				
Ref. No.	Part No.	Description			Ref. No.	Part No.	Description			Ref. No.	Part No.	Description		
R607,608	0B25563A	RK	10K	1/10W J*	C317,318	0B43064A	CC	0.01 50V J*	C218	0B43206A	CC	560P 50V J*		
R609,610	0B25539A	RK	1K	1/10W J*	C325L,R	0B42785A	CE	4.7 16V*	C219	0B43078A	CC	2200P 50V K*		
R611,612	0B25563A	RK	10K	1/10W J*	C331	0B42789A	CE	4.7 16V*	C220	0B43092A	CC	0.1 25V Z*		
R613	0B25563A	RK	10K	1/10W J*	C332,333	0B43064A	CC	0.01 50V J*	C221	0B43090A	CC	47P 50V J*		
R614	0B25587A	RK	100K	1/10W J*	C334	0B43064A	CC	0.01 50V J*	C222	0B43194A	CC	82P 50V J*		
R615,616	0B25563A	RK	10K	1/10W J*	C339	0B42781A	CE	10 16V*	C223	0B43092A	CC	0.1 25V Z*		
R617,618	0B25563A	RK	10K	1/10W J*	C340	0B42783A	CE	22 16V*	CN201	0B85295A	10P	Connector Header		
R619,620	0B25563A	RK	10K	1/10W J*	C351L,R	0B43063A	CC	1000P 50VJ *						
R621,622	0B25563A	RK	10K	1/10W J*	C352L,R	0B42785A	CE	4.7 16V*						
R623,624	0B25563A	RK	10K	1/10W J*	C353	0B42781A	CE	10 16V*						
R625,626	0B25563A	RK	10K	1/10W J*	C354	0B42783A	CE	22 16V*						
R627,628	0B25563A	RK	10K	1/10W J*	C355	0B43064A	CC	0.01 50V J*						
R629	0B25525A	RK	270	1/10W J*	C401	0B43064A	CC	0.01 50V J*						
R630,631	0B25563A	RK	10K	1/10W J*	C403	0B43221A	CC	0.047 25V K*						
R632,633	0B25563A	RK	10K	1/10W J*	C404	0B42790A	CE	100 6.3V*						
R634	0B25539A	RK	1K	1/10W J*	C405	0B43064A	CC	0.01 50V J*						
R635,636	0B25563A	RK	10K	1/10W J*	C406	0B43063A	CC	1000P 50VJ *						
R637,638	0B25563A	RK	10K	1/10W J*	C407	0B43092A	CC	0.1 25V Z*						
R639	0B25539A	RK	1K	1/10W J*	C409	0B43092A	CC	0.1 25V Z*						
R640,641	0B25563A	RK	10K	1/10W J*	C453,454	0B42781A	CE	10 16V*						
R642,643	0B25563A	RK	10K	1/10W J*	C503	0B43064A	CC	0.01 50V J*						
R644,645	0B25563A	RK	10K	1/10W J*	C504,505	0B43200A	CC	220P 50V J*						
R646,647	0B25539A	RK	1K	1/10W J*	C506,507	0B43064A	CC	0.01 50V J*						
R648,649	0B25539A	RK	1K	1/10W J*	C508	0B43064A	CC	0.01 50V J*						
R650,651	0B25539A	RK	1K	1/10W J*	C510,511	0B43064A	CC	0.01 50V J*						
R652	0B25539A	RK	1K	1/10W J*	C512,513	0B43064A	CC	0.01 50V J*						
R653	0B25563A	RK	10K	1/10W J*	C514,515	0B43064A	CC	0.01 50V J*						
R654,655	0B25539A	RK	1K	1/10W J*	C519,520	0B43064A	CC	0.01 50V J*						
R656,657	0B25539A	RK	1K	1/10W J*	C552	0B42783A	CE	22 16V*						
R658,659	0B25539A	RK	1K	1/10W J*	C553	0B43078A	CC	2200P 50VK *						
R660,661	0B25563A	RK	10K	1/10W J*	C554	0B43117A	CC	39P 50VJ *						
R662,663	0B25563A	RK	10K	1/10W J*	C555	0B43115A	CC	5P 50V D*						
R665,666	0B25563A	RK	10K	1/10W J*	C556	0B43064A	CC	0.01 50V J*						
R667,668	0B25563A	RK	10K	1/10W J*	C557,558	0B42806A	CC	0.22 16V Z*						
R669	0B25525A	RK	270	1/10W J*	CN105	0B84906A	9P F Connector*							
R670,671	0B25587A	RK	100K	1/10W J*	CN106	0B84902A	8P F Connector*							
R672,673	0B25587A	RK	100K	1/10W J*	CN107	0B84903A	12P F Connector*							
R674,675	0B25587A	RK	100K	1/10W J*	CN501	0B84871A	24P Connector Socket							
R676,677	0B25587A	RK	100K	1/10W J*	CN502	0B84907A	14P F Connector*							
R678,679	0B25587A	RK	100K	1/10W J*	CN508	0B84879A	22P F Connector*							
R680,681	0B25587A	RK	100K	1/10W J*	TC501	0B42787A	Trimmer 10P*							
R682,683	0B25587A	RK	100K	1/10W J*		QJ08175C	Heat Sink Power (1)							
R684,685	0B25587A	RK	100K	1/10W J*										
R686,687	0B25587A	RK	100K	1/10W J*										
R688,689	0B25587A	RK	100K	1/10W J*										
R690,691	0B25587A	RK	100K	1/10W J*										
R692	0B25587A	RK	100K	1/10W J*										
R693,694	0B25563A	RK	10K	1/10W J*										
R695	0B25587A	RK	100K	1/10W J*										
R696	0B25539A	RK	1K	1/10W J*										
C159	0B42814A	CE	33 25V*											
C160	0B43064A	CC	0.01 50V J*											
C161	0B42789A	CE	47 16V*											
C166	0B42789A	CE	47 16V*											
C202	0B43064A	CC	0.01 50V J*											
C203L,R	0B43235A	CC	0.018 50V K*											
C204	0B43064A	CC	0.01 50V J*											
C213,214	0B43221A	CC	0.047 25V K*											
C224	0B43082A	CC	0.015 50V K*											
C301L,R	0B42785A	CE	4.7 16V*											
C302L,R	0B42785A	CE	4.7 16V*											
C303L,R	0B42785A	CE	4.7 16V*											
C304	0B42783A	CE	22 16V*											
C305L,R	0B42785A	CE	4.7 16V*											
C306L,R	0B43071A	CC	470P 50VJ *											
C307L,R	0B43238A	CML	0.068 50V Z*											
C308L,R	0B42785A	CE	4.7 16V*											
C309L,R	0B43079A	CC	3300P 50V K*											
C310L,R	0B43083A	CC	0.022 50V K*											
C311L,R	0B42780A	CE	1 35V*											
C312L,R	0B42781A	CE	10 16V*											
C313L,R	0B42785A	CE	4.7 16V*											
C314L,R	0B42785A	CE	4.7 16V*											
C315L,R	0B43080A	CC	4700P 50V K*											
C316L,R	0B43080A	CC	4700P 50V K*											

3.2. Front P.C.B. Ass'y

Schematic Ref. No.	Part No.	Description
	BA10068A	Front P.C.B. Ass'y (LCD Green)
U701	OB10970A	IC NJU3715G*
IC701	OB12843A	IC LC75824W*
IC702	OB10856A	Remote Sensor SBX8035
Q701,702	OB10972A	TR 2SD1757K*
Q703	OB10972A	TR 2SD1757K*
D701	OB10974A	LED LT1H40A YEL*
D702	OB12815A	LED LT1K40A GRN*
D703	OB10974A	LED LT1H40A YEL*
D704	OB12815A	LED LT1K40A GRN*
D705	OB10974A	LED LT1H40A YEL*
D706	OB12815A	LED LT1K40A GRN*
D707	OB10974A	LED LT1H40A YEL*
D708	OB12815A	LED LT1K40A GRN*
D709	OB10974A	LED LT1H40A YEL*
D710	OB12815A	LED LT1K40A GRN*
D711	OB10974A	LED LT1H40A YEL*
D712,713	OB12815A	LED LT1K40A GRN*
D714,715	OB12815A	LED LT1K40A GRN*
D716,717	OB12815A	LED LT1K40A GRN*
D718,719	OB12815A	LED LT1K40A GRN*
D720,721	OB12815A	LED LT1K40A GRN*
D722,723	OB12815A	LED LT1K40A GRN*
D724,725	OB12815A	LED LT1K40A GRN*
D726,727	OB12815A	LED LT1K40A GRN*
D728,729	OB12815A	LED LT1K40A GRN*
D730,731	OB12815A	LED LT1K40A GRN*
D732,733	OB12815A	LED LT1K40A GRN*
D734,735	OB12815A	LED LT1K40A GRN*
D736,737	OB12815A	LED LT1K40A GRN*
D738,739	OB12815A	LED LT1K40A GRN*
D740,741	OB12815A	LED LT1K40A GRN*
D742,743	OB12815A	LED LT1K40A GRN*
D746,747	OB10971A	D MA112*
R702	OB20671A	RK 1 1/10WJ*
R703	OB25507A	RK 47 1/10W J*
R704,705	OB25523A	RK 220 1/10W J*
R706	OB25525A	RK 270 1/10W J*
R707	OB25529A	RK 390 1/10W J*
R708	OB25531A	RK 470 1/10W J*
R709	OB25535A	RK 680 1/10W J*
R710	OB25537A	RK 820 1/10WJ *
R711	OB25541A	RK 1.2K 1/10W J*
R712	OB25547A	RK 2.2K 1/10W J*
R713	OB25553A	RK 3.9K 1/10W J*
R714	OB25567A	RK 15K 1/10W J*
R715,716	OB25523A	RK 220 1/10W J*
R717	OB25525A	RK 270 1/10W J*
R718	OB25529A	RK 390 1/10W J*
R719	OB25531A	RK 470 1/10W J*
R720	OB25535A	RK 680 1/10W J*
R721	OB25537A	RK 820 1/10WJ *
R722	OB25541A	RK 1.2K 1/10W J*
R723	OB25547A	RK 2.2K 1/10W J*
R724	OB25553A	RK 3.9K 1/10W J*
R725	OB25567A	RK 15K 1/10W J*
R726,727	OB25579A	RK 47K 1/10W J*
R728,729	OB25579A	RK 47K 1/10W J*
R730	OB25597A	RK 270K 1/10W J*
R732,733	OB25519A	RK 150 1/10W J*
R734,735	OB25519A	RK 150 1/10W J*
R736,737	OB25519A	RK 150 1/10W J*
R738,739	OB25519A	RK 150 1/10W J*
R740,741	OB25519A	RK 150 1/10W J*
R742,743	OB25519A	RK 150 1/10W J*
R744,745	OB25524A	RK 240 1/10W J*
R746,747	OB25524A	RK 240 1/10W J*
R748,749	OB25524A	RK 240 1/10W J*
R750,751	OB25524A	RK 240 1/10W J*
R752,753	OB25524A	RK 240 1/10W J*
R754,755	OB25524A	RK 240 1/10W J*
R756	OB25519A	RK 150 1/10W J*

Schematic Ref. No.	Part No.	Description
R758,759	OB25525A	RK 270 1/10W J*
R760,761	OB25513A	RK 82 1/10W J*
R762,763	OB25513A	RK 82 1/10W J*
R764,765	OB25539A	RK 1K 1/10WJ *
R766	OB25603A	RK 470K 1/10W J*
R767,768	OB25503A	RK 33 1/10W J*
R769,770	OB25503A	RK 33 1/10W J*
R771	OB25539A	RK 1K 1/10W J*
C701	OB40157A	CE 47 6.3V
C702	OB43062A	CC 100P 50V J*
C703,704	OB43092A	CC 0.1 25V Z*
C705,706	OB43092A	CC 0.1 25V Z*
CN701	OB84758A	12P Connector
LCD701	OB90893A	LCD
LP701,702	OB90821A	Lamp 115mA 5V Cap
SW701,702	OB70271A	Tact Switch
SW703,704	OB70271A	Tact Switch
SW705,706	OB70271A	Tact Switch
SW707,708	OB70271A	Tact Switch
SW709,710	OB70271A	Tact Switch
SW711,712	OB70271A	Tact Switch
SW713,714	OB70271A	Tact Switch
SW715,716	OB70271A	Tact Switch
SW717,718	OB70271A	Tact Switch
SW719,720	OB70271A	Tact Switch
SW721,722	OB70271A	Tact Switch
SW723	OB70271A	Tact Switch
	OJ07985B	Illuminator Sheet (1)
	OJ07986B	LCD Holder (1)
	OJ07988A	LCD Reflector (1)
	OJ08171A	Rem Cushion (1)
	OJ08193A	Conductor Sheet A (1)
	OJ08200A	W Face Lcd (1)
	OJ08265A	LCD Lens (1)

Schematic Ref. No.	Part No.	Description
	BA10070A	Front P.C.B. Ass'y (LCD Amber)
U701	OB10970A	IC NJU3715G*
IC701	OB12843A	IC LC75824W*
IC702	OB10856A	Remote Sensor SBX8035
Q701,702	OB10972A	TR 2SD1757K*
Q703	OB10972A	TR 2SD1757K*
D701	OB10956A	LED LT1E40A GRN*
D702	OB10974A	LED LT1H40A YEL*
D703	OB10956A	LED LT1E40A GRN*
D704	OB10974A	LED LT1H40A YEL*
D705	OB10956A	LED LT1E40A GRN*
D706	OB10974A	LED LT1H40A YEL*
D707	OB10956A	LED LT1E40A GRN*
D708	OB10974A	LED LT1H40A YEL*
D709	OB10956A	LED LT1E40A GRN*
D710	OB10974A	LED LT1H40A YEL*
D711	OB10956A	LED LT1E40A GRN*
D712,713	OB10974A	LED LT1H40A YEL*
D714,715	OB10974A	LED LT1H40A YEL*
D716,717	OB10974A	LED LT1H40A YEL*
D718,719	OB10974A	LED LT1H40A YEL*
D720,721	OB10974A	LED LT1H40A YEL*
D722,723	OB10974A	LED LT1H40A YEL*
D724,725	OB10974A	LED LT1H40A YEL*
D726,727	OB10974A	LED LT1H40A YEL*
D728,729	OB10974A	LED LT1H40A YEL*
D730,731	OB10974A	LED LT1H40A YEL*
D732,733	OB10974A	LED LT1H40A YEL*
D734,735	OB10974A	LED LT1H40A YEL*
D736,737	OB10974A	LED LT1H40A YEL*
D738,739	OB10974A	LED LT1H40A YEL*
D740,741	OB10974A	LED LT1H40A YEL*
D742,743	OB10974A	LED LT1H40A YEL*
D746,747	OB10971A	SID MA112*
R702	OB20671A	RK 1 1/10WJ*

Schematic Ref. No.	Part No.	Description
R703	OB25507A	RK 47 1/10W J*
R704,705	OB25523A	RK 220 1/10W J*
R706	OB25525A	RK 270 1/10W J*
R707	OB25529A	RK 390 1/10W J*
R708	OB25531A	RK 470 1/10W J*
R709	OB25535A	RK 680 1/10W J*
R710	OB25537A	RK 820 1/10WJ *
R711	OB25541A	RK 1.2K 1/10W J*
R712	OB25547A	RK 2.2K 1/10W J*
R713	OB25553A	RK 3.9K 1/10W J*
R714	OB25567A	RK 15K 1/10W J*
R715,716	OB25523A	RK 220 1/10W J*
R717	OB25525A	RK 270 1/10W J*
R718	OB25529A	RK 390 1/10W J*
R719	OB25531A	RK 470 1/10W J*
R720	OB25535A	RK 680 1/10W J*
R721	OB25537A	RK 820 1/10WJ *
R722	OB25541A	RK 1.2K 1/10W J*
R723	OB25547A	RK 2.2K 1/10W J*
R724	OB25553A	RK 3.9K 1/10W J*
R725	OB25567A	RK 15K 1/10W J*
R726,727	OB25579A	RK 47K 1/10W J*
R728,729	OB25579A	RK 47K 1/10W J*
R730	OB25597A	RK 270K 1/10W J*
R732,733	OB25519A	RK 150 1/10W J*
R734,735	OB25519A	RK 150 1/10W J*
R736,737	OB25519A	RK 150 1/10W J*
R738,739	OB25519A	RK 150 1/10W J*
R740,741	OB25519A	RK 150 1/10W J*
R742,743	OB25519A	RK 150 1/10W J*
R744,745	OB25524A	RK 240 1/10W J*
R746,747	OB25524A	RK 240 1/10W J*
R748,749	OB25524A	RK 240 1/10W J*
R750,751	OB25524A	RK 240 1/10W J*
R752,753	OB25524A	RK 240 1/10W J*
R754,755	OB25524A	RK 240 1/10W J*
R756	OB25519A	RK 150 1/10W J*
R758,759	OB25525A	RK 270 1/10W J*
R760,761	OB25513A	RK 82 1/10W J*
R762,763	OB25513A	RK 82 1/10W J*
R764,765	OB25539A	RK 1K 1/10W J*
R766	OB25603A	RK 470K 1/10W J*
R767,768	OB25503A	RK 33 1/10W J*
R769,770	OB25503A	RK 33 1/10W J*
R771	OB25539A	RK 1K 1/10W J*
C701	OB40157A	CE 47 6.3V
C702	OB43062A	CC 100P 50V J*
C703,704	OB43092A	CC 0.1 25V Z*
C705,706	OB43092A	CC 0.1 25V Z*
CN701	OB84758A	12P Connector
LCD701	OB90893A	LCD
LP701,702	OB90802A	Lamp 115mA 5V Cap
SW701,702	OB70271A	Tact Switch
SW703,704	OB70271A	Tact Switch
SW705,706	OB70271A	Tact Switch
SW707,708	OB70271A	Tact Switch
SW709,710	OB70271A	Tact Switch
SW711,712	OB70271A	Tact Switch
SW713,714	OB70271A	Tact Switch
SW715,716	OB70271A	Tact Switch
SW717,718	OB70271A	Tact Switch
SW719,720	OB70271A	Tact Switch
SW721,722	OB70271A	Tact Switch
SW723	OB70271A	Tact Switch
	OJ07985B	Illuminator Sheet (1)
	OJ07986B	LCD Holder (1)
	OJ07988A	LCD Reflector (1)
	OJ08171A	Rem Cushion (1)
	OJ08193A	Conductor Sheet A (1)
	OJ08200A	W Face LCD (1)
	OJ08265A	LCD Lens (1)