

This Data Sheet Includes Information On

Maytag

• Product Model Number (s): •

Side-By-Side Refrigerators:
MSD2142ARA and MSD2142ARW

• Dimensions (Actual Size) •

Height with hinge assembly, full leg adj.: 66 3/4"

Height less hinge assembly, 0" leg adj.: 66"

Case width: 31 3/4"

Depth including handle: 33 5/8"

Depth less handle: 31 1/4"

Depth with door open 90°: 48 3/4"

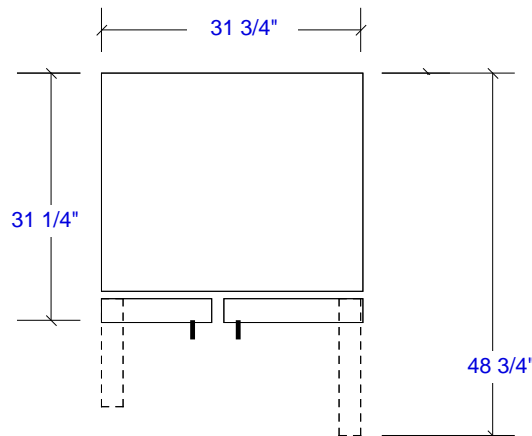
Minimum opening height, 0" leg adj.: 66"

Minimum opening width: 32 3/4"

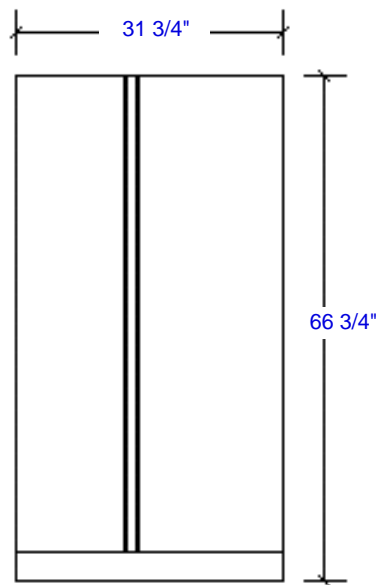
• Additional Information •

- Width (incl. handle) when doors are open 90° is 37 3/8".
- Unit does NOT accept custom panels.
- Doors are NOT reversible.
- Electrical requirements: 120V, 60Hz, 15 ampere fused electrical supply is required. An individual branch (or separate circuit serving only this appliance is recommended).

Top View
(not to scale)



Front View
(not to scale)



Subject to change without notice. This system is designed to be updated daily if necessary. Dimension Express is not responsible for use of superseded, voided, or outdated data sheets. Because of the difficulty or impracticability of determining actual damages, liability of Dimension Express shall not exceed \$50.00.

Copyright © Dimension Express, 2000.

277

• NEVER reuse Data Sheets. Data Sheets are subject to change without notice. Dimension Express is a FREE service bureau and is updated daily, it makes far more sense to spend the time necessary to request new Data Sheets for each project, as opposed to the problems, time, costs, and risks associated with reusing old Data Sheets.

- Call Dimension Express if you have any questions at (775) 833-3633 •
- Always refer to a current Code at a Glance or manufacturer directory •
- Data Sheet codes change on the first of odd numbered months at 12:01am •

BN1 • A277 • 31376 • 000107 • 195422 • 25197