



**Service Bulletin**

**No. :** MZ05-009

**Date:** January 9, 2007

**Model:** ER2500

**Subject:** If the video equipment connected to the ER2500 does not have a coupling capacitor the units will not sync properly.

**Symptom:** The following 6 parts have been changed on the MAIN PCB.

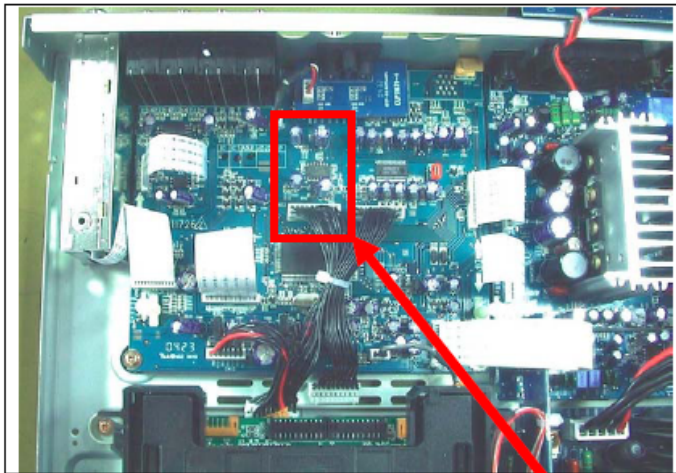
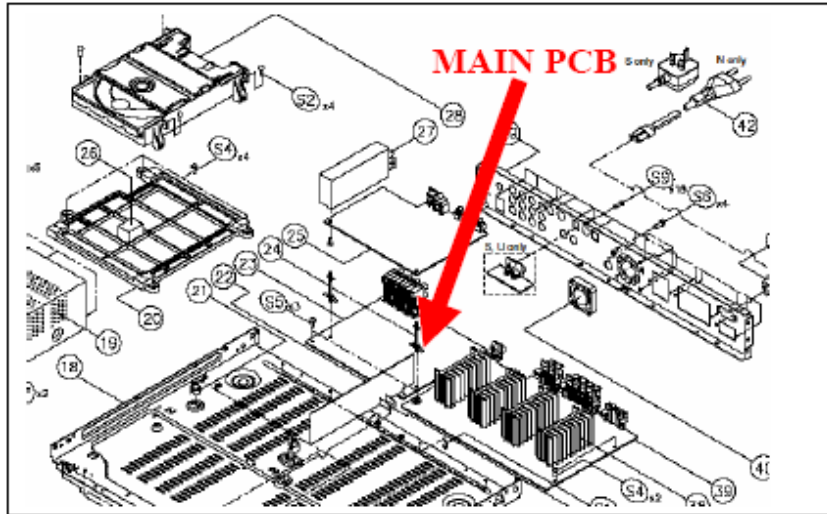
- Solution:**
1. C531 CHIP ELECT. CAPACITOR (100uF 16V) is changed to (33uF 16V).
  2. C537 CHIP ELECT. CAPACITOR (100uF 16V) is changed to (33uF 16V).
  3. CARBON FILM FIXED RESISTOR (75 OHM +-5% 1/6W) is added.
  4. CARBON FILM FIXED RESISTOR (75 OHM +-5% 1/6W) is added.
  5. R525 CHIP RESISTOR (75 OHM) is removed.
  6. R530 CHIP RESISTOR (75 OHM) is removed.

**Parts:**

Ref #	FORMER		NEW	
	Description	Part Number	Description	Part Number
C531 C537	100uF 16V ELECT. CHIP CAPACITOR	00MOA10701620	33uF 16V ELECT. CHIP CAPACITOR	00MOA33602520
NEW	NA	NA	75 OHM +- 5% 1/6W CARBON FILM FIXED RESISTOR	00MGD05750160

**CONFIDENTIALITY NOTICE:**

The information contained in this document is intended for the exclusive use by MARANTZ Authorized Service Centers and their employees. This document may contain information that is privileged, confidential and may be protected from disclosure under applicable laws and terms of the MARANTZ Service Agreement. Any distribution, disclosure, dissemination or copying of this document and the information it contains is prohibited. No responsibility will be accepted by MARANTZ for any damage, injury or loss resulting from the misuse of the information contained in this document.

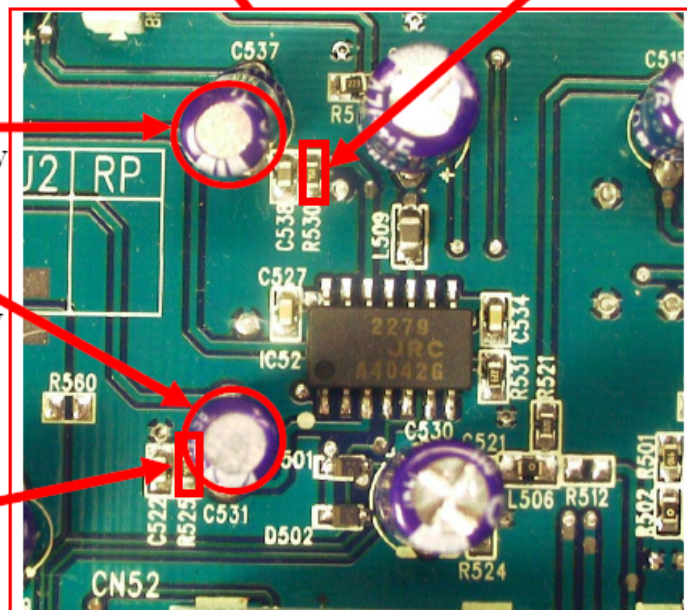


Remove **R530**

**C537**  
100uF/16V is changed to 33uF/16V

**C531**  
100uF/16V is changed to 33uF/16V

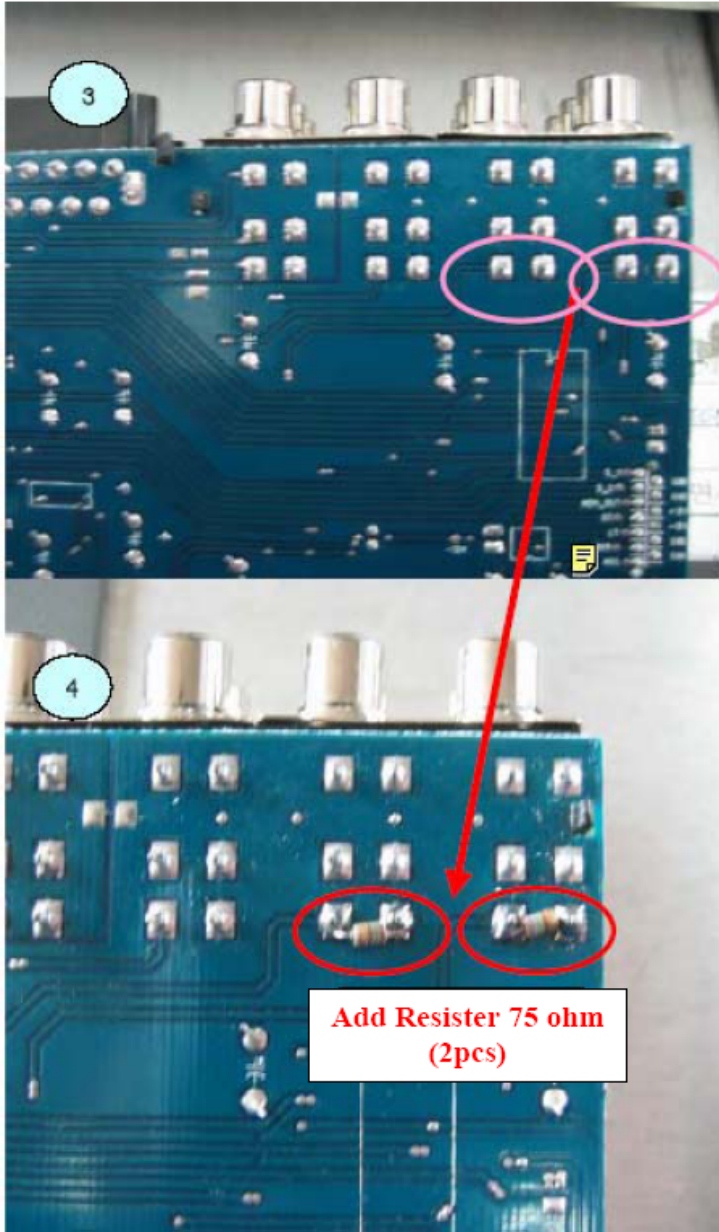
Remove **R525**



**CONFIDENTIALITY NOTICE:**

The information contained in this document is intended for the exclusive use by MARANTZ Authorized Service Centers and their employees. This document may contain information that is privileged, confidential and may be protected from disclosure under applicable laws and terms of the MARANTZ Service Agreement. Any distribution, disclosure, dissemination or copying of this document and the information it contains is prohibited. No responsibility will be accepted by MARANTZ for any damage, injury or loss resulting from the misuse of the information contained in this document.

MAIN PCB Pattern side



### Serial Number Range:

This problem applies to the following serial number.  
The upgrade applies to MZ01xxxx000400 and earlier.  
This improvement has been done in production from serial number  
MZ010504000401 and after.

---

#### CONFIDENTIALITY NOTICE:

The information contained in this document is intended for the exclusive use by MARANTZ Authorized Service Centers and their employees. This document may contain information that is privileged, confidential and may be protected from disclosure under applicable laws and terms of the MARANTZ Service Agreement. Any distribution, disclosure, dissemination or copying of this document and the information it contains is prohibited. No responsibility will be accepted by MARANTZ for any damage, injury or loss resulting from the misuse of the information contained in this document.