

Quick Start Guide

Cables not included. Please purchase the necessary cables at your local store. If you have any questions, read through the owner's manual so you can learn more details.

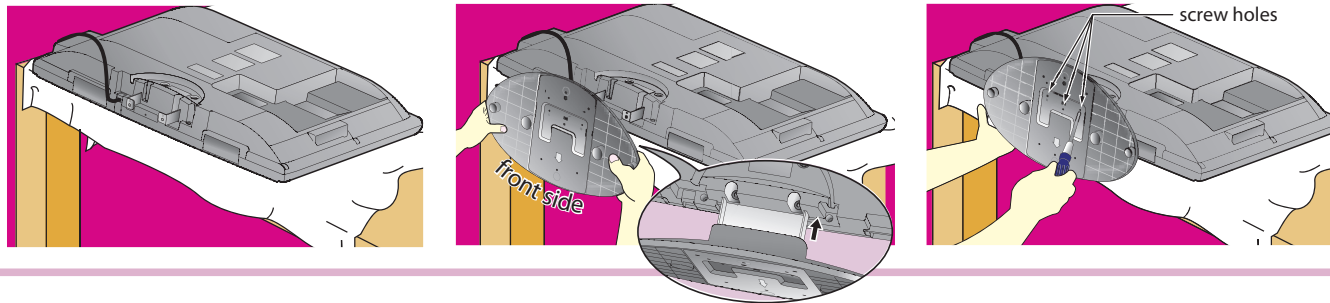
1 ATTACHING THE STAND

You must attach the stand to the unit to display upright. Be sure the front and rear of the stand match the proper direction.

Spread a thick and soft cloth over a table. Place the main unit face down onto it. Make sure not to damage the screen. At least two people are required at this step.

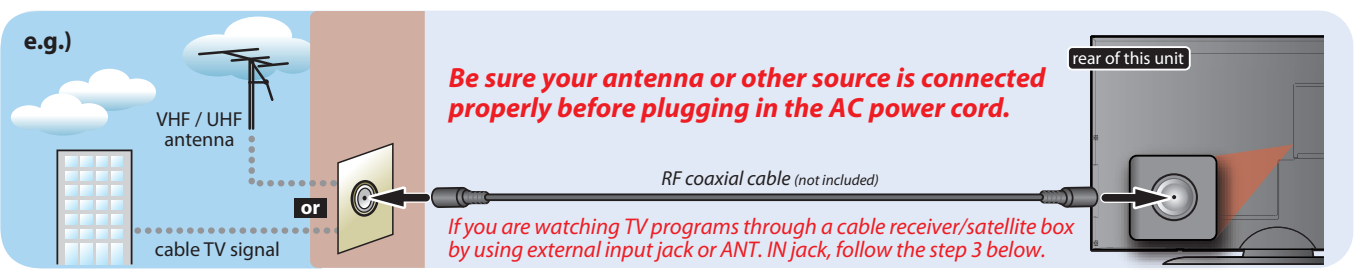
Insert the stand all the way to the main unit slowly until it clicks. Make sure not to put the AC power cord between the stand and the unit.

Drive Phillips pan screws in the 3 threaded holes at the bottom of the stand with a screwdriver tightly.



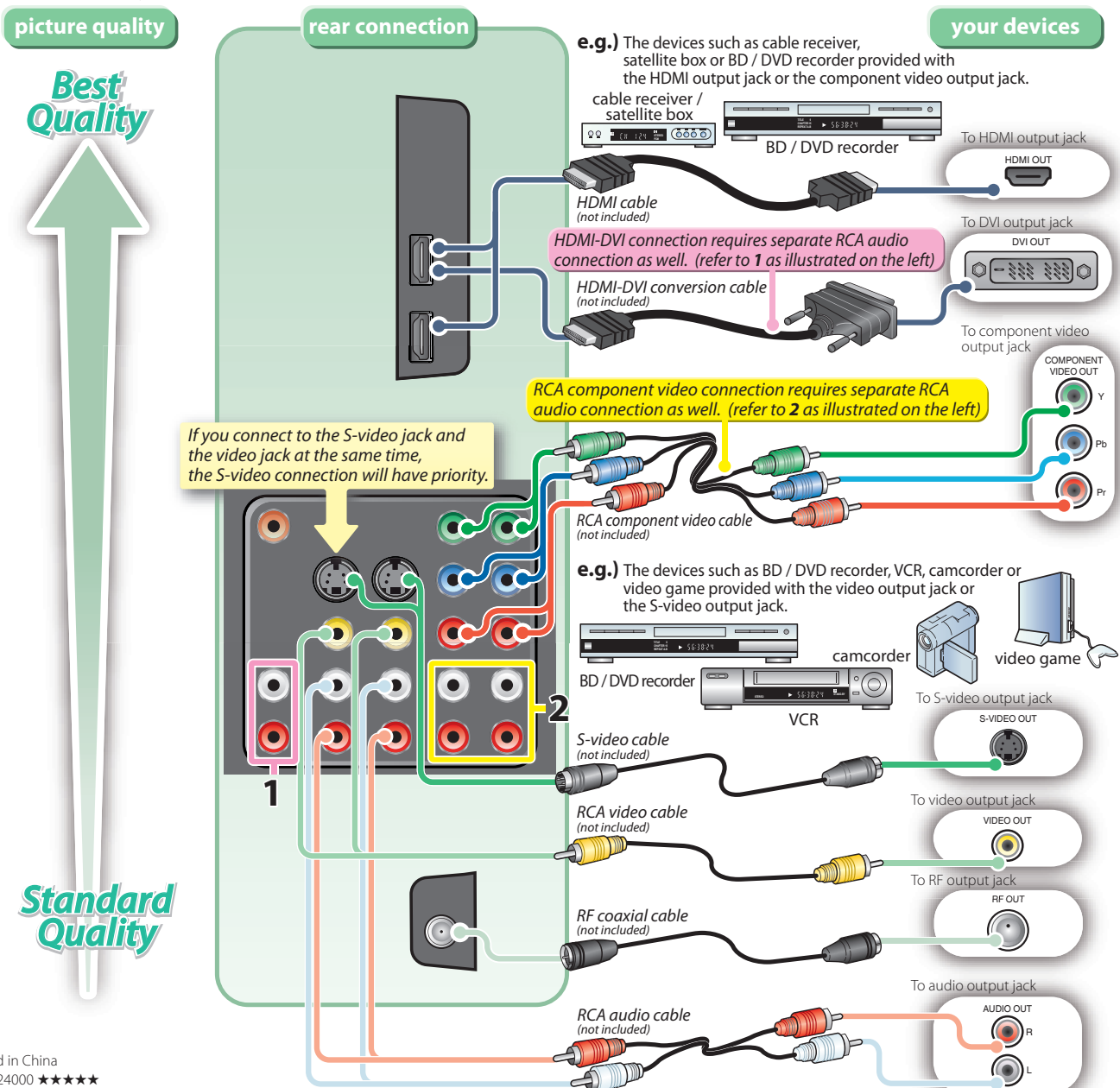
2 ANTENNA CONNECTION

Connect the unit to an antenna first.



3 CONNECTING EXTERNAL DEVICES

When you connect to external devices, use the following jacks of this unit to find your best picture resolution.

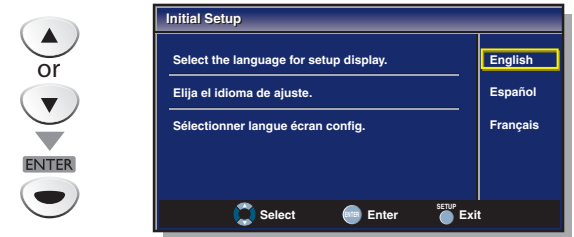


4 INITIAL SETUP

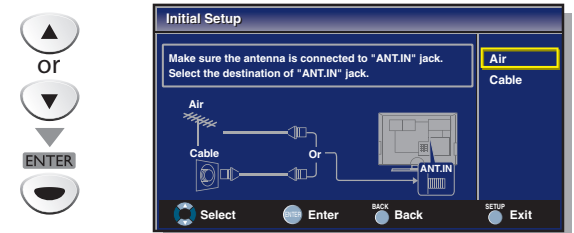
Connect the unit to an antenna, cable receiver or satellite box, first.

When you turn on the unit at the first time...

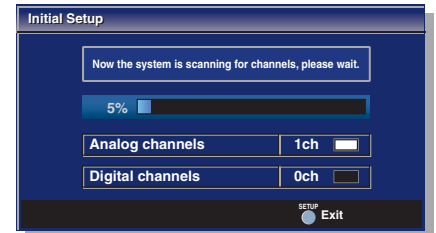
After making all the necessary connections, turn on your unit. Use [Cursor ▲/▼] to select "English", "Español" or "Français", then press [ENTER].



Use [Cursor ▲/▼] to select "Air" for TV channels or "Cable" for CATV channels, then press [ENTER].



Autoscan will start automatically.

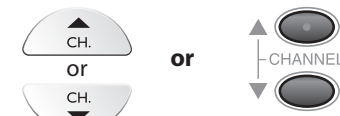


5 BASIC OPERATION

This unit has both digital tuner and analog tuner; you can find the following basic guide how to change channels and video input selection.

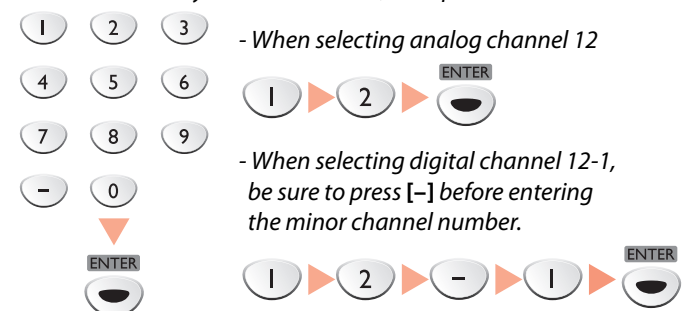
Using [CH. ▲/▼] or [CHANNEL ▲/▼]:

Select channels by using [CH. ▲/▼] found on remote control or [CHANNEL ▲/▼] on the unit's control panel.



Using [the Number buttons]:

Press the channel number with [the Number buttons] to select a channel you want to watch, then press [ENTER].



Changing video input selection:

Use your remote control to access BD / DVD recorder, home audio systems and other external devices when they are connected to the unit.

