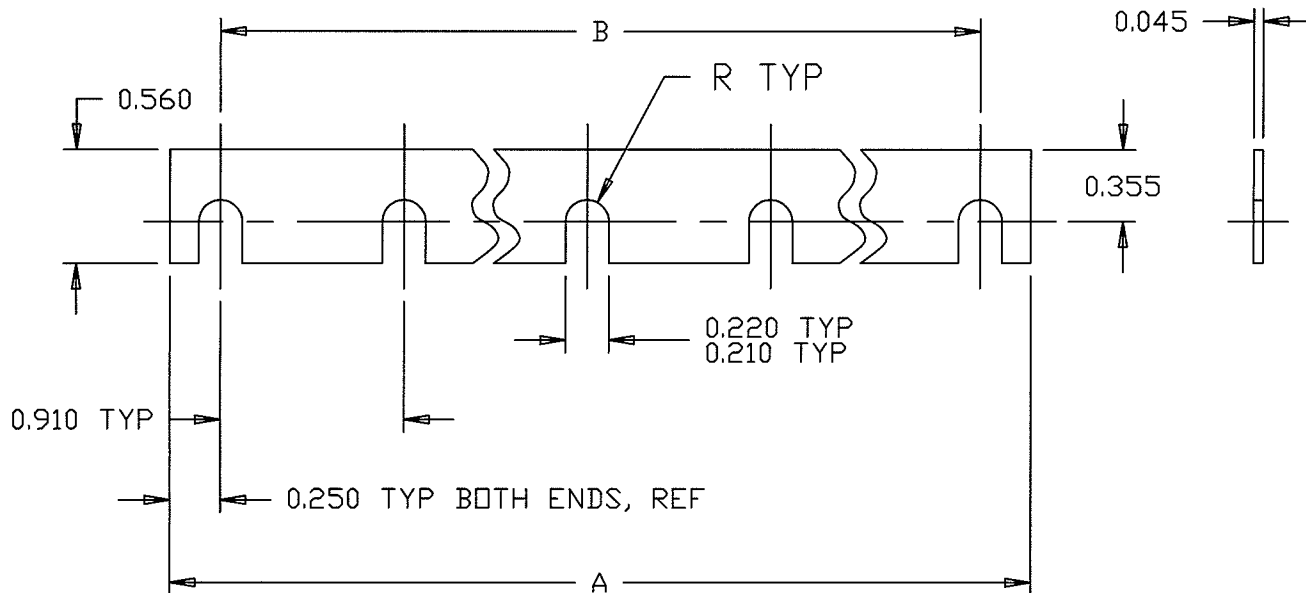


Revision Control Record

Rev.	Description of Change	ECN No.	Date
D	ADD NOTE	13119	04/24/13



86126-12	10.510	10.010	12
86126-11	9.600	9.100	11
86126-10	8.690	8.190	10
86126-9	7.780	7.280	9
86126-8	6.870	6.370	8
86126-7	5.960	5.460	7
86126-6	5.050	4.550	6
86126-5	4.140	3.640	5
86126-4	3.230	2.730	4
86126-3	2.320	1.820	3
86126-2	1.410	0.910	2
PART NO	A	B	NUMBER OF HOLES REQ'D

NOTES:
 1. MATERIAL: 0.045 (0.043/0.047) THICK X 0.560 WIDE, C11000 H02 HALF HARD COPPER

DO NOT SCALE

Note: unless noted otherwise all dimension are AFTER plating
Tolerances: Unless otherwise specifically noted, the following are default tolerances;

2-places ± 0.02 [0.5] **3-places** ± 0.005 [0.13] **Angular** ± 1'

Unless otherwise specified dimensions are in inches. Dimensions in brackets [] are in millimeters.

"REF" = Non-Toleranced Reference Dimension, shown for clarification purposes only.

Note: All tolerances are Non-Cumulative.

PROPRIETARY INFORMATION

All information contained herein, is proprietary to the Cole Hersee Company. Unauthorized use or reproduction is prohibited.

3RD ANGLE PROJECTION

Special Characteristics:

- CC** Critical Characteristic, relating to Safety and/or Regulatory Compliance
- X** Significant Characteristic relating to Process Control
- KC** Control Dimension relating to Form - Fit - Function as defined by Cole Hersee Company and/or the Customer



Littelfuse®

Phn: 617-268-2100 Web: www.colehersee.com

Description:

BUS BAR

Drawing / Part No.:

86126

Current Rev.:

D