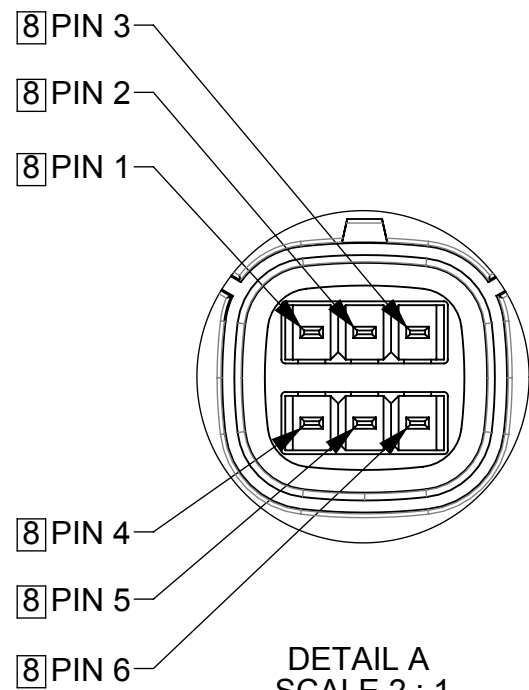


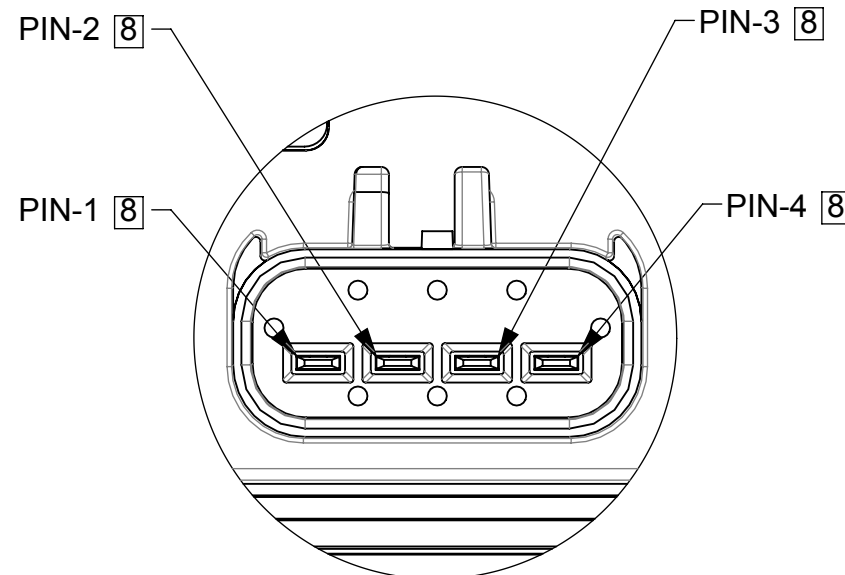
NOTES: (UNLESS OTHERWISE SPECIFIED)

- 1. ASSOCIATED CAD FILE DEFINES ALL NON-DIMENSIONED FEATURES.
- 2. MATERIAL: SEE BOM.
- 3. FUSES SHOWN FOR REFERENCE ONLY. FOR MORE INFORMATION SEE FUSE TABLE.
- 4. TORQUE FOR M8 FASTENERS = 20N-m (14.75 Ft-Lb)
- 5. BOTTOM OF THE UNIT SHOULD NEVER FACE UP.
- 6. INSTALLATION TORQUE FOR PAN PHILIPS HEAD SCREW = 3.0 N-m (27 in-lb)
- 7. MAXIMUM APPLICABLE SCREW LENGTH = 13MM
- 8. PIN CALLOUT: REFER TO PIN CALLOUT TABLE FOR DETAILS.

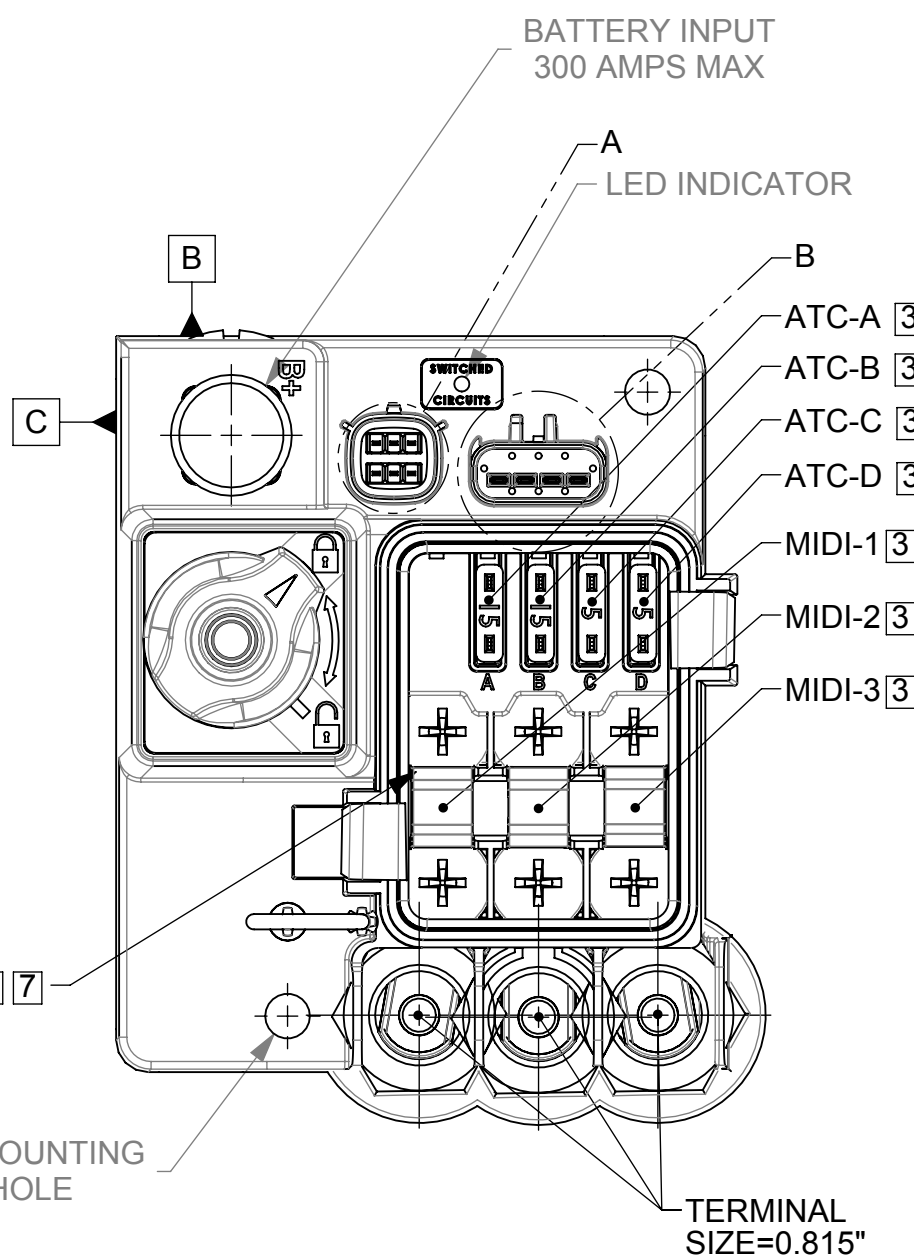
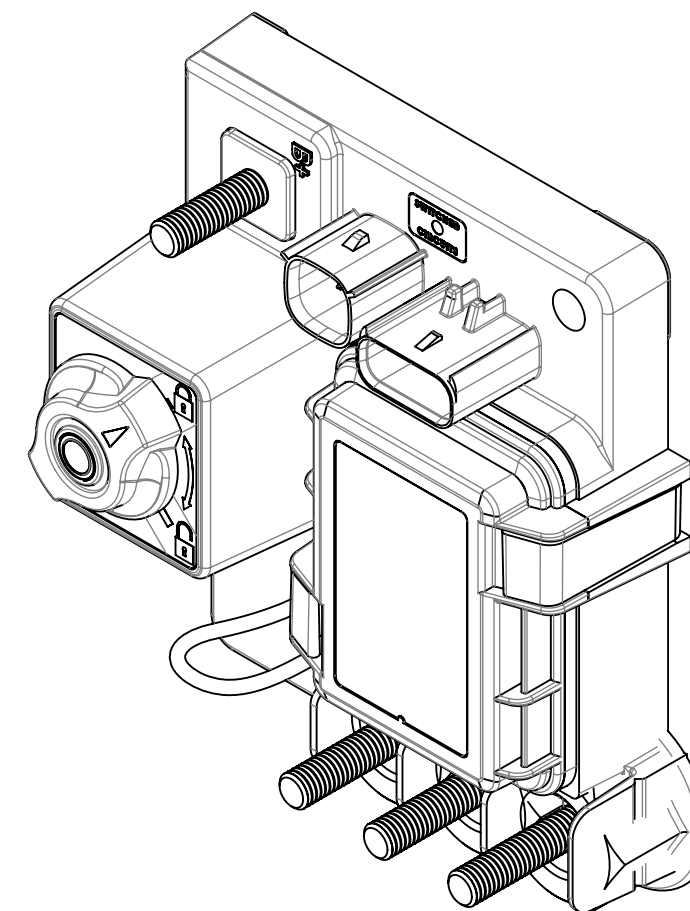
REVISIONS				
ZONE	REV.	DESCRIPTION	DATE	APPROVED
	B	PER EC#509553 : INITIAL RELEASE	9/18/2013	V.BELOUS



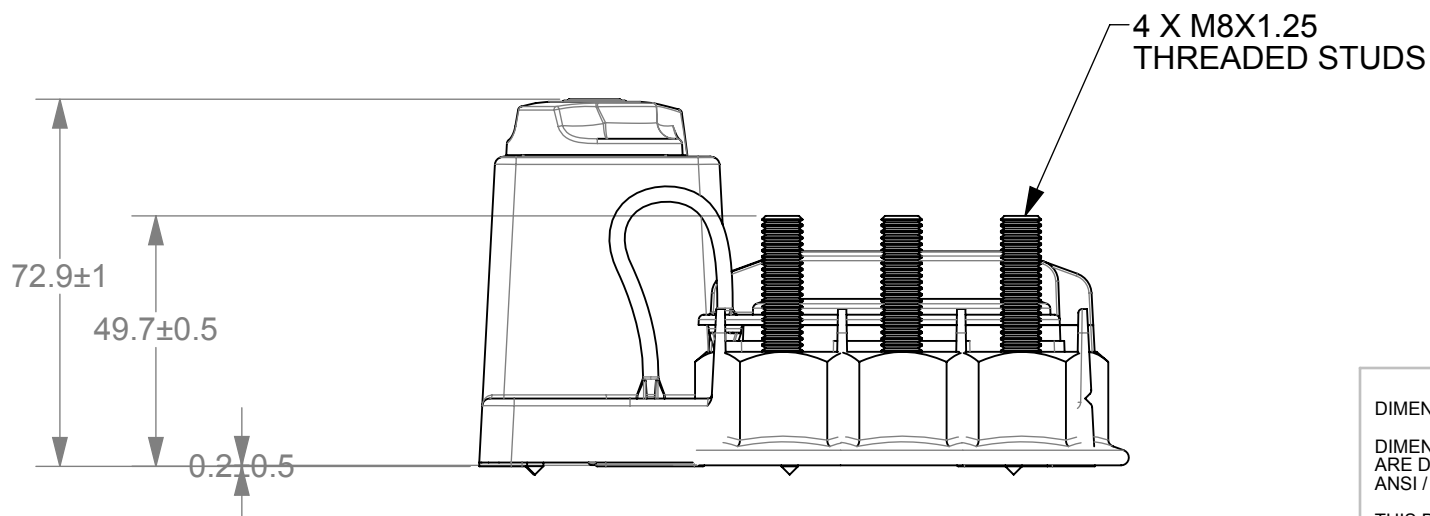
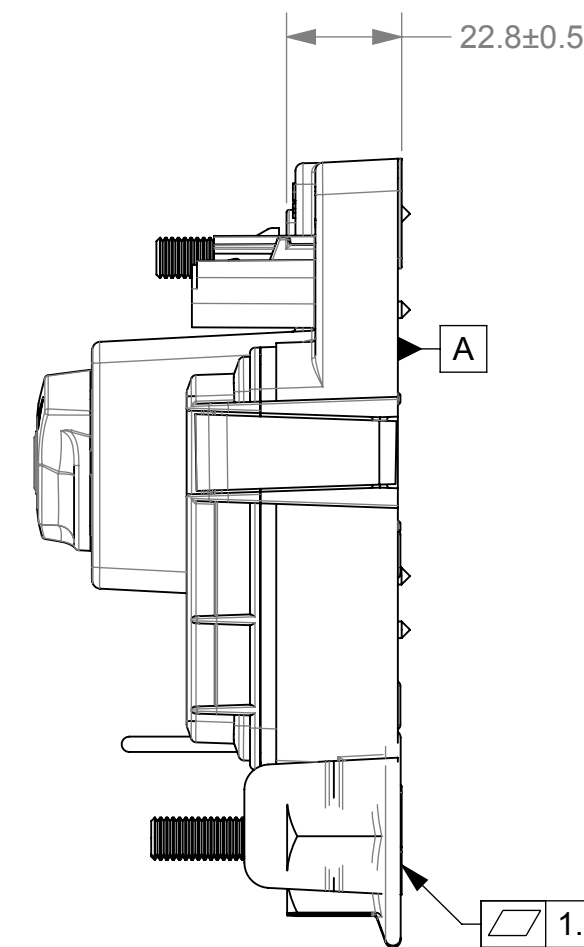
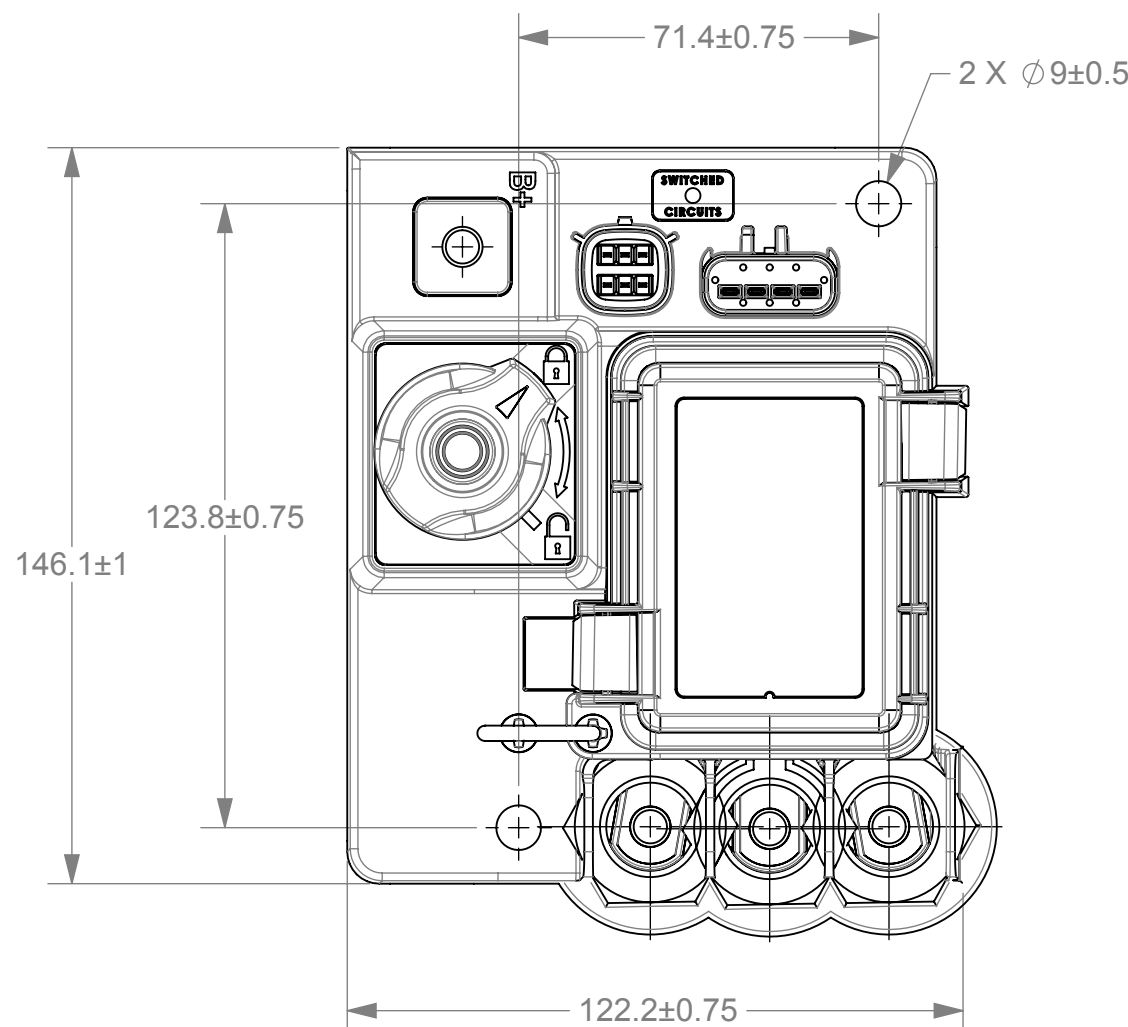
DETAIL A
SCALE 2 : 1
CONNECTOR FOR PRIMARY SOLENOID CONTROL
MATE WITH 23-13662-600



DETAIL B
SCALE 2 : 1
CONNECTOR FOR KEEP ALIVE CIRCUIT
MATE WITH 23-13153-410



FRONT COVER REMOVED
FUSES SHOWN FOR REFERENCE ONLY



FUSE TABLE		
FUSE	DESCRIPTION	MAX. FUSE ALLOWED
ATC-A	KEEP ALIVE POWER	30 AMS
ATC-B	KEEP ALIVE POWER	30 AMPS
ATC-C	KEEP ALIVE POWER	30 AMPS
ATC-D	KEEP ALIVE POWER	30 AMPS
MIDI-1 (FUSE-1)	HIGH AMP FUSE	200 AMPS
MIDI-2 (FUSE-2)	HIGH AMP FUSE	200 AMPS
MIDI-3 (FUSE-3)	HIGH AMP FUSE	200 AMPS

PIN CALLOUT TABLE			
6-PIN MOLEX		4-PIN FCI	
PIN #	FUNCTION	PIN #	FUNCTION
1	GROUND	1	OUTPUT ATO-A
2	OFF SIGNAL	2	OUTPUT ATO-B
3	LED PULL DOWN	3	OUTPUT ATO-C
4	SW POWER	4	OUTPUT ATO-D
5	SW INPUT		
6	GROUND		

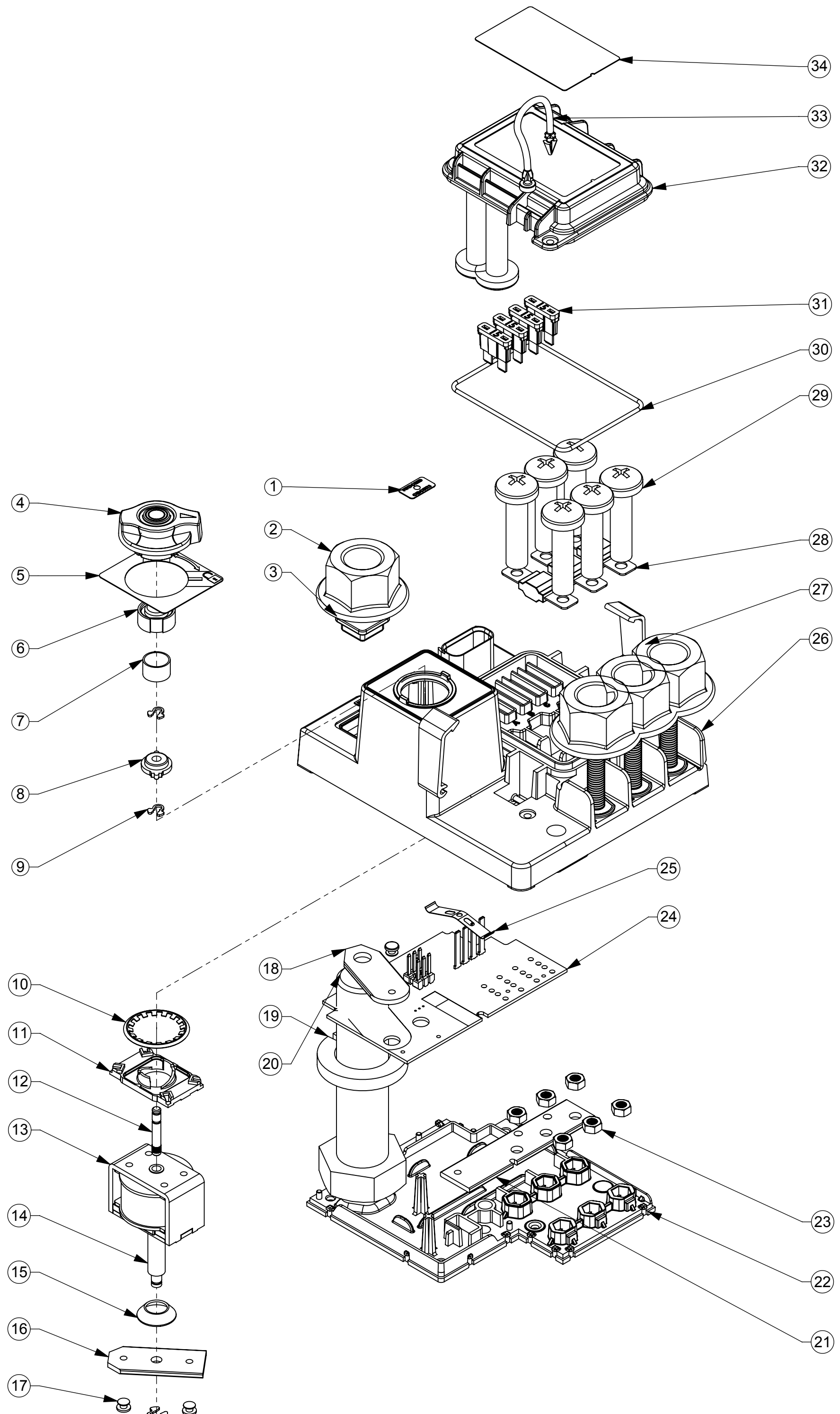
DIMENSIONS ARE IN MM.
DIMENSIONS AND TOLERANCES ARE DEFINED ACCORDING TO ANSI / ASME Y14.5M-1994
THIS DRAWING AND THE INFORMATION CONTAINED WITHIN IT ARE CONFIDENTIAL AND MAY NOT BE COPIED OR DISCLOSED WITHOUT THE WRITTEN PERMISSION OF LITTELFUSE.

NAME	DATE
DRAWN V.BELOUS	9/18/2013
CHECKED	

Littelfuse
Expertise Applied | Answers Delivered
425 Sequoia Drive Bellingham, WA 98226
Phone (360)738-9010 Fax (360)738-0372
POWER DISTRIBUTION SWITCH MODULE MN
Part Number: 880076

SIZE	DWG. NO.	REV.
C	880076	B

SCALE 2:3 SHEET 1 OF 2



BOM						
ITEM	PART NUMBER	DESCRIPTION	MATERIAL	SPECIFICATION	QTY/M	U/M
1	7727	LABEL SAFETYHUB 250 MANUAL CONTROL	POLYESTER BASE - FLEXCON, THERML FILM PM200 WHITE TC-387 V-156 SPEC 50K/Q-8 HVY ADH 1.6-1.7 POLYCARBONATE TOP COAT	ADHESIVE: 3ACRYLIC PER POLYESTER BASE MATERIAL	1000	EA
2	980003760	NUT M8 SERRATED HEX FLANGE SS	STAINLESS STEEL	PASSIVATED	4000	EA
3	990510150	NUT M8X1.25 SQUARE CU-TIN	COPPER CDA 102	BRIGHT ACID TIN PLATE PER MIL-T-10727C TYPE1 0.0003" THICK	1000	EA
4	980003940	KNOB MARINE PDM	VARIES	N/A	1000	EA
5	7727	LABEL SAFETYHUB 250 MANUAL CONTROL	POLYESTER BASE - FLEXCON, THERML FILM PM200 WHITE TC-387 V-156 SPEC 50K/Q-8 HVY ADH 1.6-1.7 POLYCARBONATE TOP COAT	ADHESIVE: 3ACRYLIC PER POLYESTER BASE MATERIAL	1000	EA
6	980003950	PUSH BUTTON AUX CONTROL MARINE PDM	POM	NATURAL	1000	EA
7	980003890	SPRING AUX MARINE PDM	302 STAINLESS STEEL	NATURAL	1000	EA
8	980003920	BUSHING AUX MARINE PDM	POM	NATURAL	1000	EA
9	980003970	RETAINING CLIP PO-15	STAINLESS STEEL	PASSIVATED	3000	EA
10	980003960	RETAINING RING EXT.875 TX-87	STAINLESS STEEL	PASSIVATED	1000	EA
11	980003930	BASE AUX LIFTER MARINE PDM	POM	NATURAL	1000	EA
12	980003850	SHAFT AUX MARINE PDM W/KNOW	304 STAINLESS STEEL	NATURAL	1000	EA
13	980001430	SOLENOID PNDB	VARIES	N/A	1000	EA
14	980001440	SHAFT SOLENOID PNDB	AISI 12L14 STEEL	BRIGHT NICKEL	1000	EA
15	980000600	SPRING CONICAL PNDB	302 STAINLESS STEEL	NATURAL	1000	EA
16	990180600	BUS COPPER PM ACR CONTACT	COPPER UNS C11000	BRIGHT ACID TIN PLATE PER MIL-T-10727C TYPE1 0.0003" THICK	1000	EA
17	990180040	CONTACT RIVET, ML SOLENOID, 99.9% Ag	SILVER TIN OXIDE	N/A	3000	EA
18	990510010	BUS COPPER PNDB MAIN	COPPER UNS C11000	BRIGHT ACID TIN PLATE PER MIL-T-10727C TYPE1 0.0003" THICK	1000	EA
19	980002830	LOCK WASHER M8 SS	302 STAINLESS STEEL	PASSIVATED	1000	EA
20	980002820	BOLT M8X1.25X30	302 STAINLESS STEEL	PASSIVATED	1000	EA
21	990510020	BUS COPPER PNDB DESTRIUTION	COPPER UNS C11000	BRIGHT ACID TIN PLATE PER MIL-T-10727C TYPE1 0.0003" THICK	1000	EA
22	990510090	BACK PNDB-RBS	NYLON 6/6 25% GF	BLACK	1000	EA
23	980002850	NUT M5X0.8X4 SS	302 STAINLESS STEEL	PASSIVATED	6000	EA
24	980003190	PCB ASSY PNDB-RBS	N/A	N/A	1000	EA
25	980001900	PNDB SPRING FORM CONTACT	17-7 PH STAINLESS COND C	NATURAL	1000	EA
26	980003880	BASE SAFETYHUB 250	VARIES	N/A	1000	EA
27	990510050	LATCH PNDB	CELCON M90	YELLOW	2000	EA
28	VARIES	MIDI FUSE	N/A	N/A	3000	EA
29	980002840	SCREW M5X0.810 PPHMS WITH HYPATCH	18-8 STAINLESS STEEL	PASSIVATED	8000	EA
30	980002800	COVER O-RING PNDB	BUNA-N	BLACK	1000	EA
31	VARIES	ATO FUSE	N/A	N/A	4000	EA
32	990510060	COVER PNDB	FR-UL V0 PC	BLACK	1000	EA
33	980002230	PNDB TETHER	SHIN-ESTY CHEMICAL KE-850-U	BLACK	1000	EA
34	890000470	LABEL THERMAL 0.94X0.7 METALLIC	.002" FLEXCON THERML FILM PM 200 WHITE TC-387 V-156 .003" POLYCARBONATE OVERLAMMINATE	ADHESIVE: 3M 9667MP, 2.3MIL THICK	1000	EA

DIMENSIONS ARE IN MM.
 DIMENSIONS AND TOLERANCES ARE DEFINED ACCORDING TO ANSI / ASME Y14.5M-1994
 THIS DRAWING AND THE INFORMATION CONTAINED WITHIN IT ARE CONFIDENTIAL AND MAY NOT BE COPIED OR DISCLOSED WITHOUT THE WRITTEN PERMISSION OF LITTELFUSE.

NAME	DATE
DRAWN V.BELOUS	9/18/2013
CHECKED	

Littelfuse
 Expertise Applied | Answers Delivered
 425 Sequoia Drive Bellingham, WA 98226
 Phone (360)738-9010 Fax (360)738-0372

POWER DISTRIBUTION SWITCH MODULE MN
 Part Number: 880076

THIRD ANGLE PROJECTION

SIZE DWG. NO. 880076
 SCALE NTS

REV. B
 SHEET 2 OF 2