



KONICA MINOLTA

Giving Shape to Ideas

Driver Packaging Utility

User's Guide

[INDEX]

- 1. Overview 3
 - 1-1. Introduction..... 3
 - 1-2. Use cases..... 4
 - 1-3. System environment requirements 5
 - 1-3-1. Operating environment 5
 - 1-3-2. Printer Driver..... 6
 - 1-4. Restrictions and currently identified faults 9
- 2. Basic operations..... 11
 - 2-1. Starting 11
 - 2-2. Main screen..... 11
 - 2-3. File Menu..... 12
 - 2-3-1. Open package 12
 - 2-3-2. Save Package..... 13
 - 2-3-3. Delete package..... 14
 - 2-4. Edit Menu 15
 - 2-4-1. Add Printer 15
 - 2-4-2. Add Printer tab settings..... 16
 - 2-4-3. Update Driver..... 21
 - 2-4-4. Update Driver tab Setting..... 22
 - 2-4-5. Delete Driver..... 24
 - 2-5. Configuration Menu 25
 - 2-5-1. Individual Settings..... 25
 - 2-5-2. DPU Folder 26
 - 2-6. View Menu..... 26
 - 2-7. Help Menu 26
- 3. Creating and executing the package 27
 - 3-1. Creating printer driver additional package 27
 - 3-2. Creating printer driver update package 30
 - 3-3. Creating printer driver delete package..... 33
 - 3-4. Creating printer driver mixed package..... 35
 - 3-5. Using the package..... 39
- 4. Option settings 41
 - 4-1. Copying and default setting of Printing Preferences..... 41
 - 4-2. Individual Settings for each individual user..... 44
 - 4-2-1. Editing Individual Settings file 44
 - 4-2-2. Enabling Individual Settings..... 48
 - 4-3. Setting for executing the package by administrator authority 51

Trademarks and registered trademarks

Trademark acknowledgments

KONICA MINOLTA, KONICA MINOLTA logo are registered trademarks or trademarks of KONICA MINOLTA, INC.

Microsoft, Excel, and Windows are either registered trademarks or trademarks of Microsoft Corporation in the United States and/or other countries.

All other company and product names are either trademarks or registered trademarks of their respective companies.

[Reminder]

The dialog boxes that appear in this document may differ from those that appear on your computer, depending on the installed devices and specified settings.

The explanation of this application in this manual and all screen images are as of December, 2014.

These may be changed without prior notice.

[Note]

Unauthorized reproduction, translation or duplication of this document, whether in its entirety or in part, is strictly prohibited.

The contents of this document are subject to change without notice.

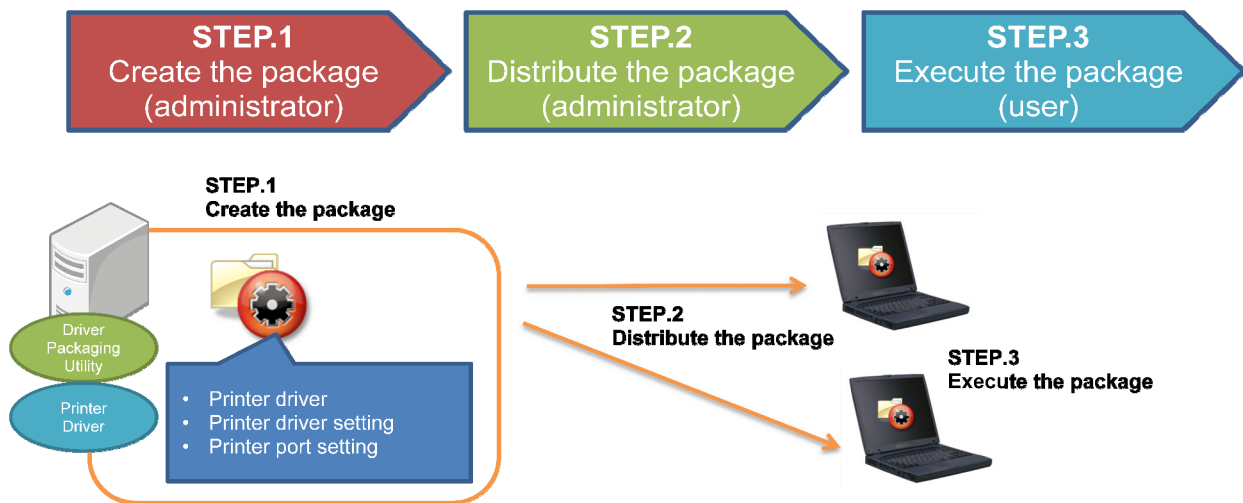
Copyright © 2015 KONICA MINOLTA, INC. All rights reserved.

1. Overview

1-1. Introduction

Driver Packaging Utility creates an installation package in which default settings of the printer driver are changed. A package in which the administrator makes default settings according to the office environment is distributed and the user executes the package on a client computer. This enables installation of a new printer driver or automatic setting of uniform details of new printer driver settings.

[General process]



- STEP.1 Create the package (administrator)

Use Driver Packaging Utility to select the printer driver and make various settings, thereby creating a package.

- STEP.2 Distribute the package (administrator)

Using a file server or a shared folder, distribute the package to computers to which the package is to be applied.

- STEP.3 Execute the package (user)

Execute the package on the computer to which it is distributed. This automatically installs the printer driver and various settings.

[Memo]

The printer driver to be distributed must be installed in advance in the computer used for creating the package. Settings of the printer driver should also be completed in advance.

1-2. Use cases

The following introduces use cases of Driver Packaging Utility.

- Use case 1: In an environment in which the log-on authority of the client computer is not the administrator for security reasons, to install the printer driver without changing the authority
By creating a package in which the administrator authority is assigned, the printer driver can be installed even when the log-on authority of the client computer is not the administrator. For more details, see "4-3. Setting for executing the package by administrator authority".

- Use case 2: To install the printer driver using a single package with the port, printing preferences, and other settings changed for each individual user
By editing the setting file of Individual Settings, the printer driver can be installed with detailed settings varied for each individual user. For more details, see "4-2. Individual Settings for each individual user".

1-3. System environment requirements

1-3-1. Operating environment

Driver Packaging Utility can be used in computers having the following OS environments.

See the Readme file for the latest information.

OS
Windows Server 2003, Standard Edition
Windows Server 2003, Enterprise Edition
Windows Server 2003 R2, Standard Edition
Windows Server 2003 R2, Enterprise Edition
Windows Server 2003, Standard x64 Edition
Windows Server 2003, Enterprise x64 Edition
Windows Server 2003 R2, Standard x64 Edition
Windows Server 2003 R2, Enterprise x64 Edition
Windows Vista Home Basic *
Windows Vista Home Premium *
Windows Vista Ultimate *
Windows Vista Business *
Windows Vista Enterprise *
Windows Server 2008 Standard *
Windows Server 2008 Enterprise *
Windows 7 Home Basic
Windows 7 Home Premium *
Windows 7 Ultimate *
Windows 7 Professional *
Windows 7 Enterprise *
Windows Server 2008 R2 Standard
Windows Server 2008 R2 Enterprise
Windows 8 * / Windows 8.1 *
Windows 8 Pro * / Windows 8.1 Pro *
Windows 8 Enterprise * / Windows 8.1 Enterprise *
Windows Server 2012 Standard
Windows Server 2012 Datacenter
Windows Server 2012 R2 Standard
Windows Server 2012 R2 Datacenter

* Compatible with 32-bit(x86)/64-bit(x64) environments

1-3-2. Printer Driver

Driver Packaging Utility can create packages supporting the printer drivers for the following products. See the Readme file for the latest information.

Product Name	Printer Driver
bizhub C754/C754e/C654/C654e	KONICA MINOLTA C754SeriesFAX KONICA MINOLTA C754SeriesPCL KONICA MINOLTA C754SeriesPS KONICA MINOLTA C754SeriesXPS
bizhub 754/754e/654/654e	KONICA MINOLTA 754SeriesFAX KONICA MINOLTA 754SeriesPCL KONICA MINOLTA 754SeriesPS KONICA MINOLTA 754SeriesXPS
bizhub C554/C554e/C454/C454e	KONICA MINOLTA C554SeriesFAX KONICA MINOLTA C554SeriesPCL KONICA MINOLTA C554SeriesPS KONICA MINOLTA C554SeriesXPS
bizhub 554e/454e/364e/284e/224e	KONICA MINOLTA 554eSeriesFAX KONICA MINOLTA 554eSeriesPCL KONICA MINOLTA 554eSeriesPS KONICA MINOLTA 554eSeriesXPS
bizhub C364/C364e/C284/C284e/C224/C224e	KONICA MINOLTA C364SeriesFAX KONICA MINOLTA C364SeriesPCL KONICA MINOLTA C364SeriesPS KONICA MINOLTA C364SeriesXPS
bizhub 751/601	KONICA MINOLTA 751/601 FAX KONICA MINOLTA 751/601 PCL KONICA MINOLTA 751/601 PS(V) KONICA MINOLTA 751/601 XPS+
bizhub 501/421/361	KONICA MINOLTA 501/421/361FAX KONICA MINOLTA 501/421/361PCL KONICA MINOLTA 501/421/361PS(V) KONICA MINOLTA 501/421/361XPS+
bizhub C652/C652DS/C552/C552DS/C452	KONICA MINOLTA C652SeriesFAX KONICA MINOLTA C652SeriesPCL KONICA MINOLTA C652SeriesPS KONICA MINOLTA C652SeriesXPS

Product Name	Printer Driver
bizhub 652/602/552/502	KONICA MINOLTA 652/602SeriesFAX KONICA MINOLTA 652/602SeriesPCL KONICA MINOLTA 652/602SeriesPS KONICA MINOLTA 652/602SeriesXPS
bizhub 423/363/283/223	KONICA MINOLTA 423SeriesFAX KONICA MINOLTA 423SeriesPCL KONICA MINOLTA 423SeriesPS KONICA MINOLTA 423SeriesXPS KONICA MINOLTA 423SeriesPCL-8 KONICA MINOLTA 423SeriesPS-8 KONICA MINOLTA 423SeriesXPS-8 KONICA MINOLTA 423SeriesFAX-8
bizhub C360/C280/C220	KONICA MINOLTA C360SeriesFAX KONICA MINOLTA C360SeriesPCL KONICA MINOLTA C360SeriesPS KONICA MINOLTA C360SeriesXPS
bizhub C281/C221/C221S	KONICA MINOLTA C281Series PCL KONICA MINOLTA C281Series PS KONICA MINOLTA C281Series XPS KONICA MINOLTA C281Series FAX
bizhub C3850/C3850FS/C3350	KONICA MINOLTA C3850 Series FAX KONICA MINOLTA C3850 Series PCL6 KONICA MINOLTA C3850 Series PS KONICA MINOLTA C3850 Series XPS
bizhub 4750/4050	KONICA MINOLTA 4750 Series FAX KONICA MINOLTA 4750 Series PCL6 KONICA MINOLTA 4750 Series PS KONICA MINOLTA 4750 Series XPS
bizhub 4020/3320	KONICA MINOLTA 4020_3320 PCL6 KONICA MINOLTA 4020_3320 PS KONICA MINOLTA 4020_3320 XPS
bizhub C3110	KONICA MINOLTA C3110 PCL6 KONICA MINOLTA C3110 PS KONICA MINOLTA C3110 XPS KONICA MINOLTA C3110 FAX

Product Name	Printer Driver
bizhub C3100P	KONICA MINOLTA C3100P PCL6 KONICA MINOLTA C3100P PS KONICA MINOLTA C3100P XPS
bizhub 42/36	KONICA MINOLTA 42SeriesFAX KONICA MINOLTA 42SeriesPCL6 KONICA MINOLTA 42SeriesPS KONICA MINOLTA 42SeriesXPS KONICA MINOLTA 42SeriesFAX-8 KONICA MINOLTA 42SeriesPCL6-8 KONICA MINOLTA 42SeriesPS-8 KONICA MINOLTA 42SeriesXPS-8
bizhub C35	KONICA MINOLTA bizhub C35 FAX KONICA MINOLTA bizhub C35 PCL6 KONICA MINOLTA bizhub C35 PS KONICA MINOLTA bizhub C35 XPS KONICA MINOLTA bizhubC35FAX-8 KONICA MINOLTA bizhubC35PCL6-8 KONICA MINOLTA bizhubC35PS-8 KONICA MINOLTA bizhubC35XPS-8

(As of December 2014)

1-4. Restrictions and currently identified faults

The following describes the restrictions and the faults that have so far been identified of the Driver Packaging Utility.

- When the package is overwritten and saved, a folder having a name to which ".bak" is appended is saved in the DPU folder (in which packages created with the Driver Packaging Utility are saved). This folder cannot be deleted from [Delete package]. Use Explorer or other means to directly delete the folder.
- If saving of a package fails, a folder having a name appended with ".err" is saved in the DPU folder. This folder cannot be deleted from [Delete package]. Use Explorer or other means to directly delete the folder.
- In a computer having a Windows setting of "Limit local account use of blank passwords to console logon only" set to "Enabled", execution of a package may fail if the package has been created with "Switch to the following user when executing the package" of "Save Package" selected and with an empty "Password".
- The Individual Settings File is a CSV format. The file may operate erratically unless a carriage return is placed at the last line of the file. Be sure to place a carriage return at the last line of the file.
- When a printer driver is copied onto the hard disk of a computer operating on Windows Vista, and if the configuration of the "Driver" folder in which "Setup.exe" as the printer driver installer is stored or below it, or a folder name is changed, devices may not be able to be automatically detected on the "Select Printer/MFP to Install" screen. To automatically detect devices, do not change the name or configuration of the "Driver" folder.
- In [Add Printer] settings, keep 40 characters or less for "Printer Name:" of the [Printer] tab and 127 characters or less for "Comment:".
- The following conditions must be met before [Add Printer], [Update Driver], and [Delete Driver] can be registered in "List of Operations":
 - No printer name has been registered as that to be registered in "List of Operations".
 - No printer drive has been registered as that to be registered in "List of Operations".
- The following functions do not operate correctly when a package that has been created on a computer operating on 64-bit Windows Vista is executed without having restarted the computer:
 - [Add Printer] / "Preference" / "Copy from this Printer"

- [Add Printer] / "Preference" / "Copy from specified file"

To use these functions, first restart the computer before executing the package.

- The following items can be incorporated in "Printing preferences" of the printer driver from a package created using Driver Packaging Utility:
 - Items set in "Favorite Setting"
 - "Excel Job Control" of the [Other] tab
 - Items that can be set in [Individual Settings File]

2. Basic operations

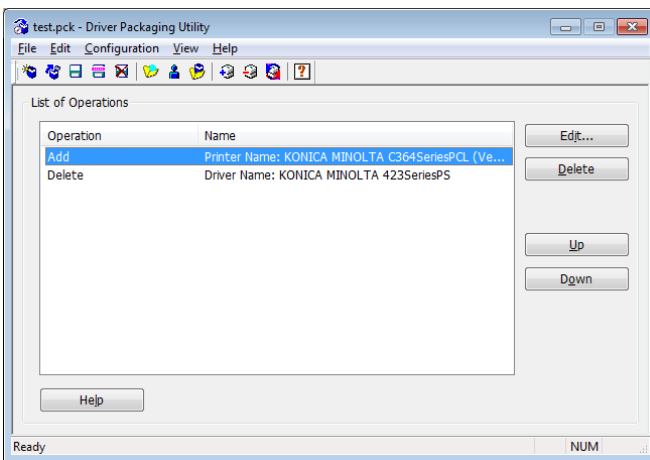
The following describes how to start Driver Packaging Utility and operating screens.

2-1. Starting

Driver Packaging Utility can be started directly from the EXE file. Starting the Driver Packaging Utility will automatically create the working folder (C:\Users\ "User Name" \Documents\KONICA MINOLTA\Driver Packaging Utility).

2-2. Main screen

The main screen displays the toolbar and various menus for creating packages.



Item	Description
File Menu	Use to create, save, or delete a package.
Edit Menu	Use to add an operation to a package.
Configuration Menu	Use to specify a location in which Individual Settings and a DPU Folder are saved.
View Menu	Use to switch to display Toolbar and Status Bar or not.
Help Menu	Use to display Help and version information.
List of Operations	<p>Displays a list of operations to be applied to the package.</p> <ul style="list-style-type: none"> • "Operation" Displays an operation of Add, Update, or Delete. • "Name" Displays a printer name to be added, a driver name to be updated, or a driver name to be deleted according to the specific operation to be performed. For "Add" and "Update", the driver version is also displayed.
Edit	Use to edit settings of the operation selected in List of Operations.
Delete	Use to delete the operation selected in List of Operations.
Up	Use to move the operation selected in List of Operations up one.

Item	Description
Down	Use to move the operation selected in List of Operations down one.
Help	Use to display the Driver Packaging Utility help.

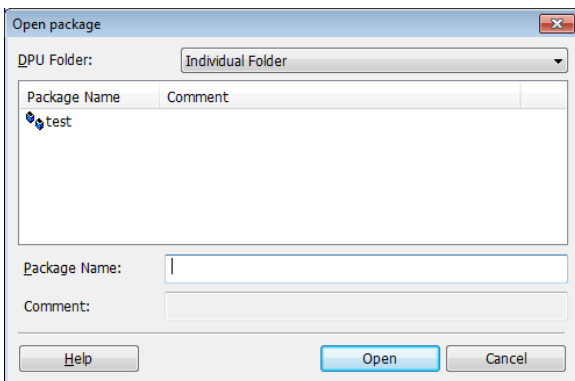
2-3. File Menu

Use to create, save, or delete a package.

Item	Description
New Package	Create a new package.
Open Package	Open an existing package.
Save	Overwrite and save the created package.
Save As	Name and save the created package.
Delete Package	Delete an existing package.
Exit	Close to exit Driver Packaging Utility.

2-3-1. Open package

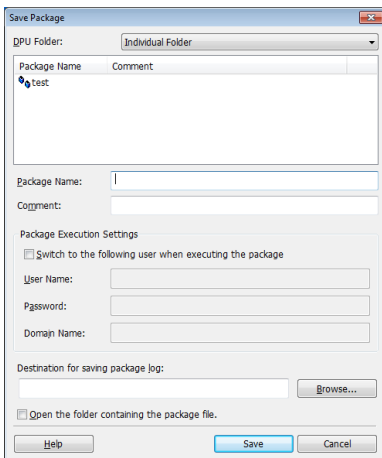
From the folder in which the package to be opened is saved, select to open the package.



Item	Description
DPU Folder	From the "Common Folder" or "Individual Folder", select the folder in which the existing package is saved.
Package List	Select the package to be opened. Displays a list of the packages saved in the DPU folder.
Package Name	Displays the name of the package selected from the Package List.
Comment	Displays the comment added to the package selected from the Package List.
Open	Opens the package selected from the Package List.
Cancel	Cancels the operation and closes the screen.
Help	Displays the Driver Packaging Utility help.

2-3-2. Save Package

Select the folder in which to save the package and set Package Name and Comment to save the package.

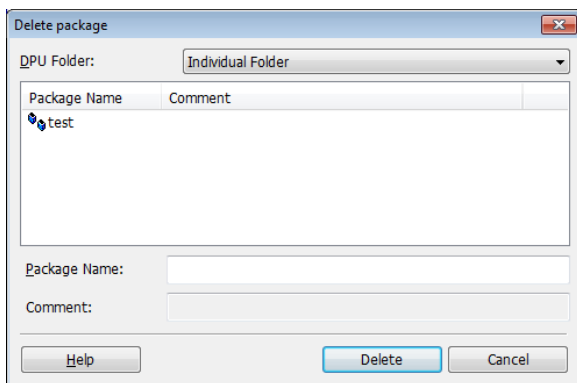


Item	Description
DPU Folder	From the "Common Folder" or "Individual Folder", select the folder in which to save the created package.
Package List	Displays a list of the packages in the folder selected in DPU Folder.
Package Name	Enter the name of the created package. The name should consist of 50 characters or less.
Comment	Enter the comment to be added to the created package. The comment should consist of 127 characters or less.
Package Execution Settings	<p>Make settings for automatically switching users when executing the package. If the user has no authority to install the printer driver on a computer on which the package is executed, setting information of the user having the authority allows the package to be applied.</p> <ul style="list-style-type: none"> • "Switch to the following user when executing the package" Select this function to execute the package under the designated user's authority. • "User Name" Set the name of the user to whom execution authority is switched during the execution of the package. • "Password" Set the password of the user to whom execution authority is switched during the execution of the package. • "Domain Name" Set the name of the domain to which the user to whom execution authority is switched belongs during the execution of the package.

Item	Description
Destination for saving package log	A destination can be set for saving a package log during package execution. If none is specified, the log is saved in the same folder in which the executed package is saved. Set the destination using a relative path.
Open the folder containing the package file	The folder in which the package resides can be opened during saving of the package. Selecting this function opens the folder in which the package resides after the package has been saved.
Save	Saves the created package in the DPU folder.
Cancel	Cancel the operation and closes the screen.
Help	Displays the Driver Packaging Utility help.

2-3-3. Delete package

Open the folder in which existing packages are saved and select the package to be deleted.



Item	Description
DPU Folder	From the "Common Folder" or "Individual Folder", select the folder in which the package to be deleted is saved.
Package List	Displays a list of the packages in the folder selected in DPU Folder. The package selected here is to be deleted.
Package Name	Displays the name of the package selected from the Package List.
Comment	Displays the comment added to the package selected from the Package List.
Delete	Delete the package selected from the Package List.
Cancel	Cancel the operation and closes the screen.
Help	Displays the Driver Packaging Utility help.

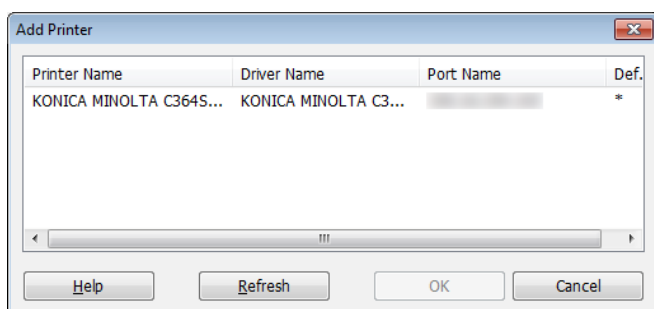
2-4. Edit Menu

The Edit Menu is used to edit the following functions relating to addition of operations. Combining these operations allows a package suitable for the environment to be created.

Item	Description
Add Printer	Add to the package an operation to add a printer driver.
Update Driver	Add to the package an operation to update a printer driver.
Delete Driver	Add to the package an operation to delete a printer driver.

2-4-1. Add Printer

Add the "Add Printer" operation to the package. Select the printer driver to be added from the list. A package suitable for the use environment can be created by changing the settings in different tabs.



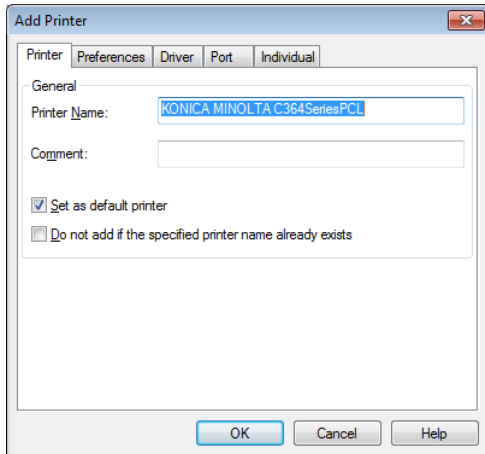
Item	Description
List for Add Printer	Select the printer driver to be added. The printer drivers displayed in the List for Add Printer meet the following requirements: <ul style="list-style-type: none"> - Printer drivers that are supported by the Driver Packaging Utility - Printer drivers that are installed on the computer being used - Printer drivers whose connection port is TCP/IP Port or Internet Port <p>The software does not support adding shared printers. Additionally, two or more instances of the same printer driver cannot be included in a package.</p>
Refresh	Updates the List for Add Printer.
OK	Validates the operation performed and brings you to a screen for making detailed settings.
Cancel	Cancels the operation and closes the screen.
Help	Displays the Driver Packaging Utility help.

2-4-2. Add Printer tab settings

Select a printer driver in "Add Printer" and click [OK]. Then, make settings in the various tabs as detailed below.

- [Printer] tab

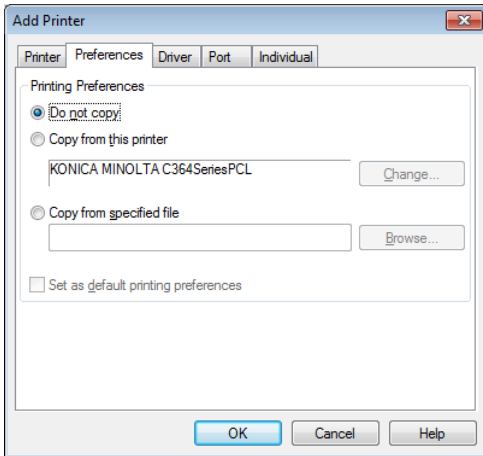
Make general settings for Add Printer.



Item	Description
Printer Name	Set the name of the printer to be added. The default value is the name of the printer selected from List for Add Printer.
Comment	Set the comment on the printer to be added.
Set as default printer	Select this check box if the printer to be added is to be used as the default printer.
Do not add if the specified printer name already exists	When this check box is selected, no new printer is added if its name already exists.
OK	Saves the operation performed.
Cancel	Cancel the operation and closes the screen.
Help	Displays the Driver Packaging Utility help.

- [Preferences] tab

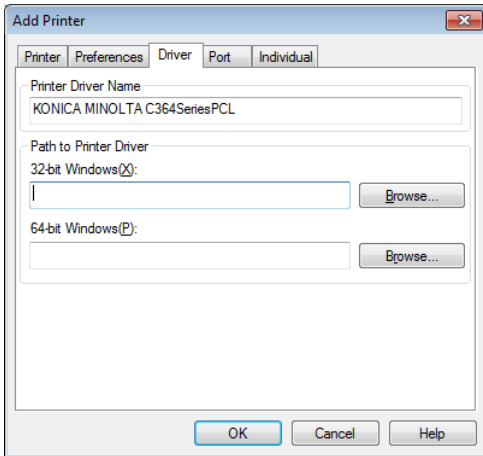
Set Printing Preferences of the printer to be added.



Item	Description
Printing Preferences	<p>Set the Printing Preferences of the printer to be added. Any of the following setting methods can be selected.</p> <ul style="list-style-type: none"> - "Do not copy" <ul style="list-style-type: none"> The printer can be added without changing Printing Preferences. - "Copy from this printer" <ul style="list-style-type: none"> The same Printing Preferences as those of the printer selected from List for Add Printer can be set. Clicking the [Change] button opens Printing Preferences, so that settings can be changed as necessary. - "Copy from specified file" <ul style="list-style-type: none"> The same Printing Preferences as those of the specified file can be set.
Change	Opens Printing Preferences of the printer, so that settings can be changed as necessary.
Browse	Opens the file dialog, so that the Printing Preferences file in which Printing Preferences are described can be selected.
Set as default printing preferences	Sets the Printing Preferences set here as the default settings of the printer for which Printing Preferences are to be added.
OK	Saves the operation performed.
Cancel	Cancels the operation and closes the screen.
Help	Displays the Driver Packaging Utility help.

- [Driver] tab

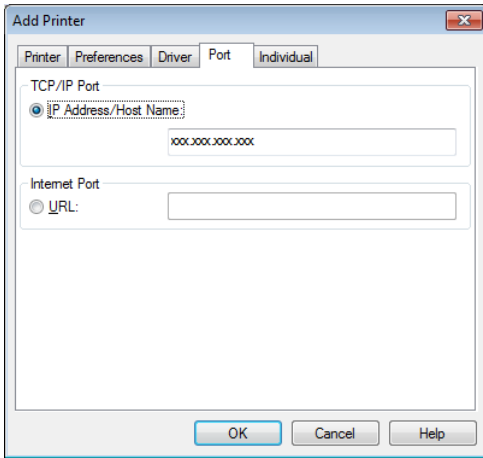
Set the driver file corresponding to the printer to be added (Printer Driver to be updated).



Item	Description
Printer Driver Name	Displays the driver name of the printer to be added.
Path to Printer Driver	Set the folder in which the 32-bit/64-bit driver file corresponding to the printer to be added is saved. The set folder must contain the INF file of the printer driver. Use the absolute path to specify the folder. - "32-bit Windows" Specify the path to the folder in which the 32-bit Windows driver file is saved. - "64-bit Windows" Specify the path to the folder in which the 64-bit Windows driver file is saved.
Browse (32bit Windows)	Opens the file dialog, so that the folder in which the 32-bit Windows driver file is saved can be selected.
Browse (64bit Windows)	Opens the file dialog, so that the folder in which the 64-bit Windows driver file is saved can be selected.
OK	Saves the operation performed.
Cancel	Cancel the operation and closes the screen.
Help	Displays the Driver Packaging Utility help.

- [Port] tab

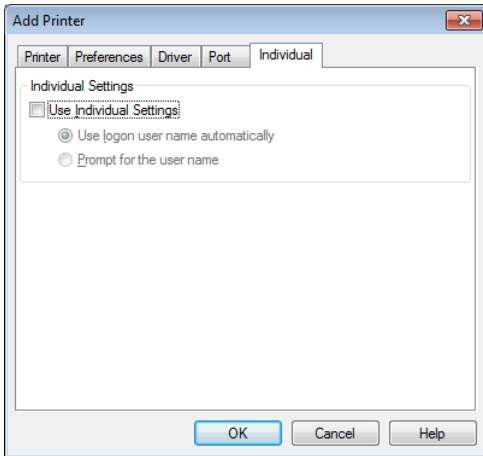
Specify the printer port to be added.



Item	Description
TCP/IP Port	The printer port to be added can be set using TCP/IP Port. - "IP Address/Host Name:" Set the IP address or the host name of the printer port to be added. Displayed by default is the IP address or host name of the printer port selected from List for Add Printer.
Internet Port	The printer port to be added can be set using Internet Port. - "URL:" Set the URL of the printer port to be added. Displayed by default is the URL of the printer port selected from List for Add Printer.
OK	Saves the operation performed.
Cancel	Cancels the operation and closes the screen.
Help	Displays the Driver Packaging Utility help.

- [Individual] tab

Set individual settings for the printer to be added (updated).

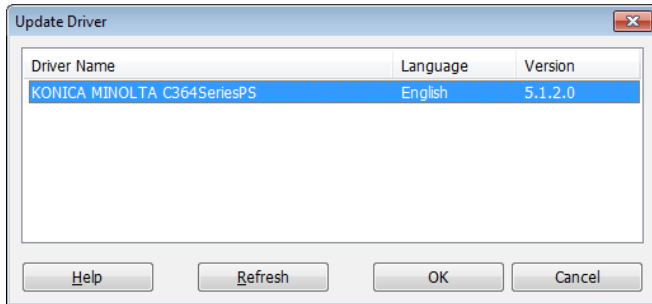


Item	Description
Individual Settings	<ul style="list-style-type: none"> - "Use Individual Settings" Select this check box, if Individual Settings are to be made for each individual user who executes the package. - "Use logon user name automatically" When the package is executed, the computer automatically searches each line of the Individual Settings file under the condition of "computer name executing the package (or domain name)\logon user name". If the Individual Settings file includes "computer name executing the package (or domain name)\logon user name", the setting value of each of corresponding lines is incorporated. If the Individual Settings file does not include "computer name executing the package (or domain name)\logon user name", the computer searches lines with blank user names and makes individual settings. The computer does not make any Individual Settings, if it finds no lines with blank user names. If the package is to be executed by a computer that participates in the domain, specify the domain name instead of the computer name. - "Prompt for the user name" When the package is executed, the computer automatically searches each line of the Individual Settings file under the condition of the user name input from the user name input dialog. If the input user name exists in the Individual Settings file, the computer incorporates the setting value of each of the applicable lines. If the input user name does not exist in the Individual Settings file, the computer does not make any Individual Settings.
OK	Saves the operation performed.
Cancel	Cancels the operation and closes the screen.

Item	Description
Help	Displays the Driver Packaging Utility help.

2-4-3. Update Driver

Add the "Update Driver" operation to the package. Select the printer driver to be updated from the list.



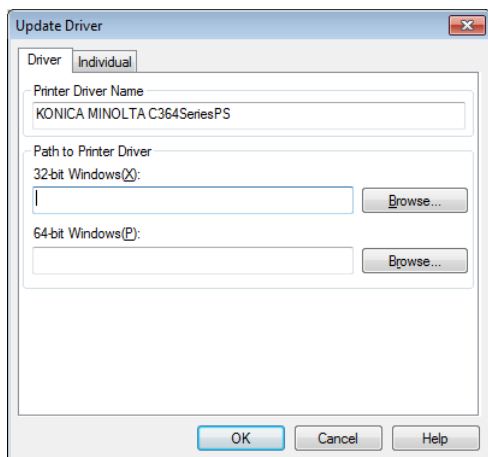
Item	Description
List for Updating Driver	<p>The printer driver to be updated can be selected. The printer drivers displayed in List for Updating Driver meets the following requirements:</p> <ul style="list-style-type: none"> - Printer drivers that are supported by the Driver Packaging Utility - Printer drivers that are installed on the computer being used - Printer drivers whose connection port is TCP/IP Port or Internet Port <p>The software does not support adding shared printers. Additionally, two or more instances of the same printer driver cannot be included in a package.</p>
Refresh	Updates the display of List for Updating Driver.
OK	Saves the operation performed.
Cancel	Cancels the operation and closes the screen.
Help	Displays the Driver Packaging Utility help.

2-4-4. Update Driver tab Setting

Select a printer driver in "Update Driver" and click [OK]. Then, make settings in the various tabs as detailed below.

- [Driver] tab

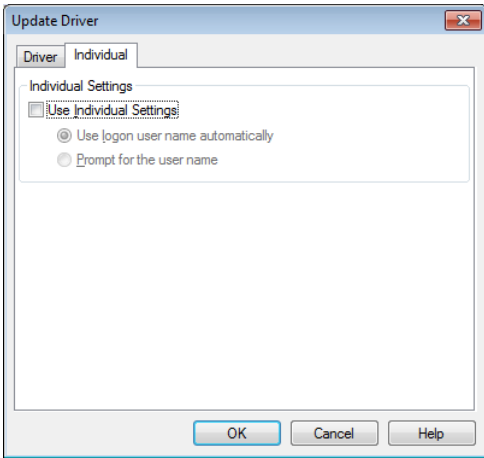
Set the driver file corresponding to the printer to be added (printer driver to be updated).



Item	Description
Printer Driver Name	Displays the name of the printer driver to be updated.
Path to Printer Driver	Set the folder in which the 32-bit/64-bit driver file corresponding to the printer driver to be updated is saved. The set folder must contain the INF file of the printer driver. Use the absolute path to specify the folder. - "32-bit Windows" Specify the path to the folder in which the 32-bit Windows driver file is saved. - "64-bit Windows" Specify the path to the folder in which the 64-bit Windows driver file is saved.
Browse (32bit Windows)	Opens the file dialog, so that the folder in which the 32-bit Windows driver file is saved can be selected.
Browse (64bit Windows)	Opens the file dialog, so that the folder in which the 64-bit Windows driver file is saved can be selected.
OK	Saves the operation performed.
Cancel	Cancel the operation and closes the screen.
Help	Displays the Driver Packaging Utility help.

- [Individual] tab

Set individual settings for the printer to be added (updated).

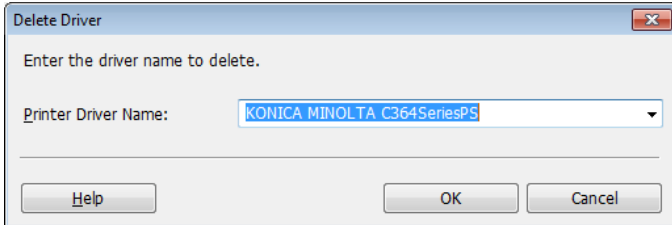


Item	Description
Individual Settings	<ul style="list-style-type: none"> - "Use Individual Settings" Select this check box, if Individual Settings are to be made for each individual user who executes the package. - "Use logon user name automatically" When the package is executed, the computer automatically searches each line of the Individual Settings file under the condition of "computer name executing the package (or domain name)\logon user name". If the Individual Settings file includes "computer name executing the package (or domain name)\logon user name", the setting value of each of corresponding lines is incorporated. If the Individual Settings file does not include "computer name executing the package (or domain name)\logon user name", the computer searches lines with blank user names and makes individual settings. The computer does not make any Individual Settings, if it finds no lines with blank user names. If the package is to be executed by a computer that participates in the domain, specify the domain name instead of the computer name. - "Prompt for the user name" When the package is executed, the computer automatically searches each line of the Individual Settings file under the condition of the user name input from the user name input dialog. If the input user name exists in the Individual Settings file, the computer incorporates the setting value of each of the applicable lines. If the input user name does not exist in the Individual Settings file, the computer does not make any Individual Settings.
OK	Saves the operation performed.
Cancel	Cancels the operation and closes the screen.

Item	Description
Help	Displays the Driver Packaging Utility help.

2-4-5. Delete Driver

Add the "Delete Driver" operation to the package. Select from the drop-down list the printer driver name to be deleted.



Item	Description
Printer Driver Name	The printer driver to be deleted can be selected. The printer drivers displayed in the drop-down list are supported by the Driver Packaging Utility.
OK	Saves the operation performed.
Cancel	Cancel the operation and closes the screen.
Help	Displays the Driver Packaging Utility help.

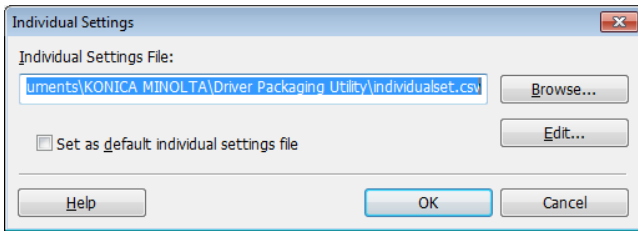
2-5. Configuration Menu

The Configuration Menu has the following functions.

Item	Description
Individual Settings	An Individual Settings file can be set.
Package File	Open a folder in which the currently open package is saved.
DPU Folder	Set the folder in which to save the created package.

2-5-1. Individual Settings

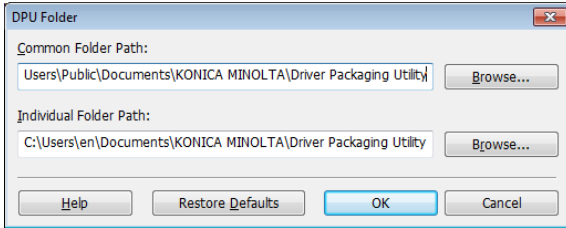
Set the Individual Settings file. One Individual Settings file can be saved in one package.



Item	Description
Individual Settings File	Specify the Individual Settings file using the absolute path.
Browse	Opens the file dialog from which the Individual Settings file can be selected.
Edit	Opens the Individual Settings file. For details of editing, see "4-2-1. Editing Individual Settings file".
Set as default individual settings file	The specified Individual Settings file can be set as the default Individual Settings file.
OK	Saves the operation performed.
Cancel	Cancel the operation and closes the screen.
Help	Displays the Driver Packaging Utility help.

2-5-2. DPU Folder

Set the folder in which to save the package.



Item	Description
Common Folder Path	Specify the "Common Folder" in which to save the package. The default folder is "C:\Documents and Settings\All Users\Documents\KONICA MINOLTA\Driver Packaging Utility".
Browse (Common Folder)	Opens a file dialog from which a "Common Folder" can be selected.
Individual Folder Path	Specify the "Individual Folder" in which to save the package. The default folder is "C:/Documents and Settings\“User Name”\My Documents\KONICA MINOLTA\Driver Packaging Utility".
Browse (Individual Folder)	Opens a file dialog from which an Individual Folder can be selected.
Restore Defaults	Restores the DPU Folder setting to the default.
OK	Saves the operation performed.
Cancel	Cancels the operation and closes the screen.
Help	Displays the Driver Packaging Utility help.

2-6. View Menu

The View Menu has the following functions.

Item	Description
Toolbar	Select whether to display or hide the Toolbar.
Status Bar	Select whether to display or hide the Status Bar.

2-7. Help Menu

The Help Menu has the following functions.

Item	Description
Help	Displays the Driver Packaging Utility help.
About	Displays the version information of the Driver Packaging Utility.

3. Creating and executing the package

The following describes the creation and execution of the package.

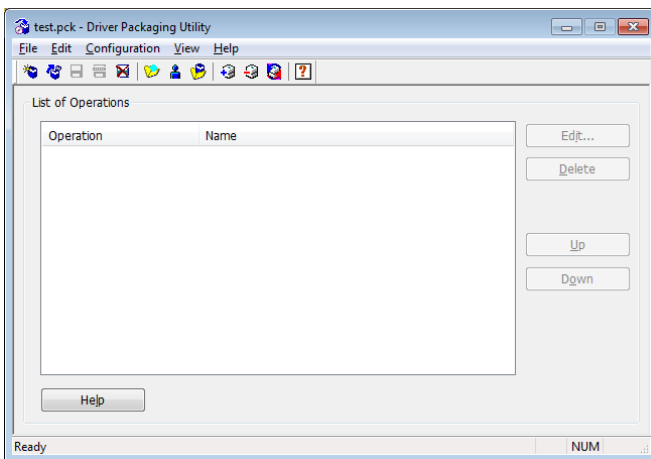
The package is created by adding the operations of "Add Printer", "Update Driver", and "Delete Driver" to the list of operations. The created package is saved in EXE file.

3-1. Creating printer driver additional package

The following describes the procedure to be followed when creating a package that includes the "Add Printer" operation. This package is created when a new printer driver is installed in a computer to which the package is distributed.

The printer driver must be installed in advance in the computer on which the Driver Packaging Utility is to be used.

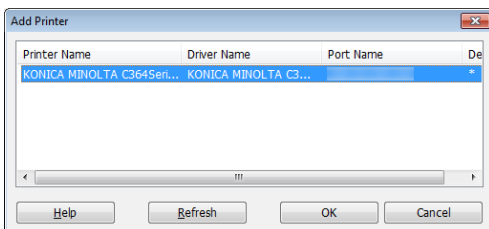
(1) Start Driver Packaging Utility.



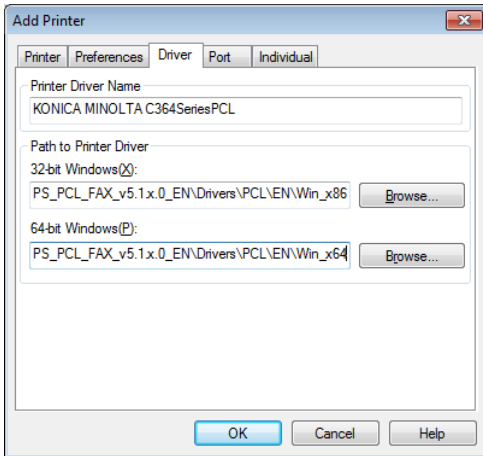
(2) On the main screen, click [File] - [New Package] in that order.

(3) On the main screen, click [Edit] - [Add Printer] in that order.

(4) Select the printer to be added from List for Add Printer and click [OK].

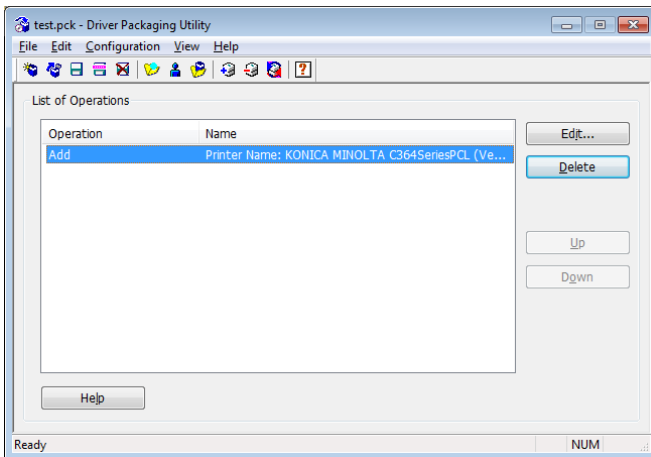


(5) Click the [Driver] tab and, in "Path to Printer Driver", specify the absolute path of the folder in which the "32-bit Windows" or "64-bit Windows" printer driver is saved.



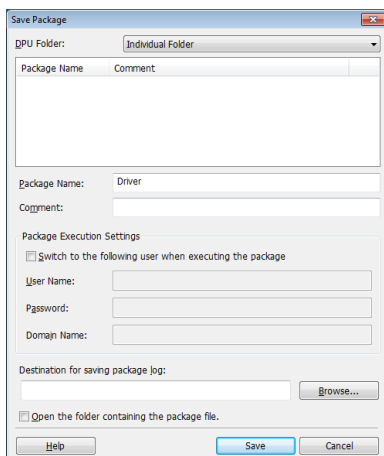
(6) Make settings of other tabs as necessary and click [OK].

(7) The "Add" operation is added to "List of Operations" on the main screen.

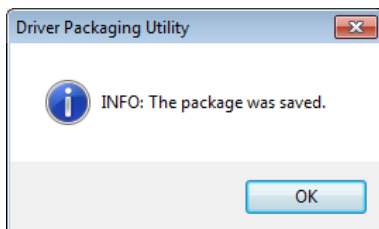


(8) On the main screen, click [File] - [Save As] in that order.

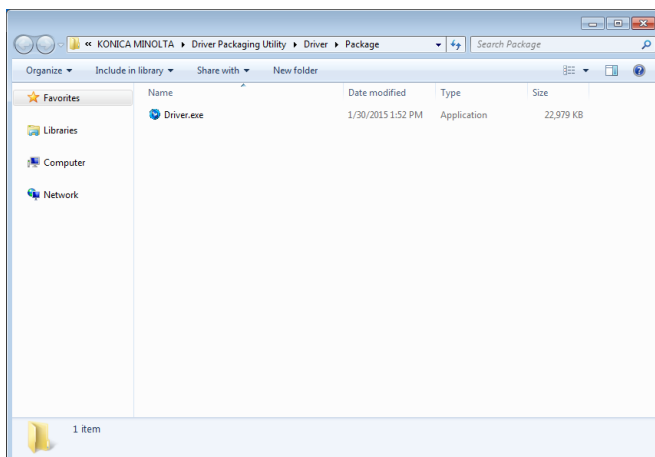
(9) In "Save Package", type the "Package Name" and click [Save].



(10) Click [OK].



(11) The EXE file of the created package is saved in the DPU folder.

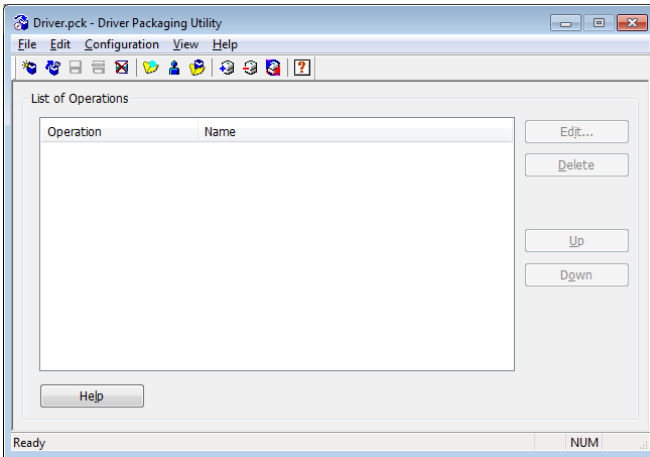


3-2. Creating printer driver update package

The following describes the procedure to be followed when creating a package that includes the "Update Driver" operation. This package is created to update the existing printer driver installed in a computer to which the package is distributed.

The updating printer driver must be installed in advance in the computer on which the Driver Packaging Utility is to be used.

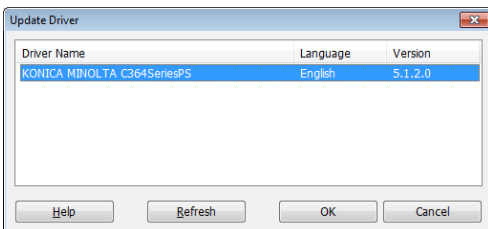
(1) Start Driver Packaging Utility.



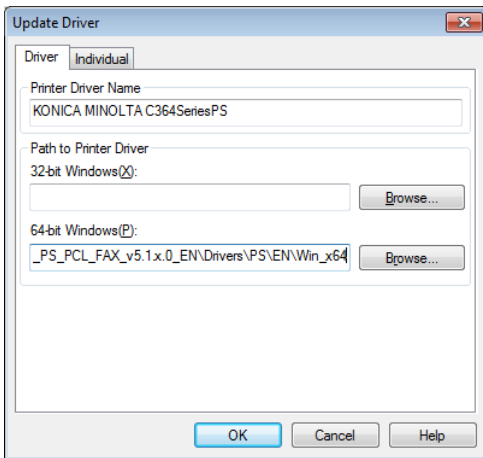
(2) On the main screen, click [File] - [New Package] in that order.

(3) On the main screen, click [Edit] - [Update Driver] in that order.

(4) Select the driver to be used for the updating from List for Updating Driver and click [OK].

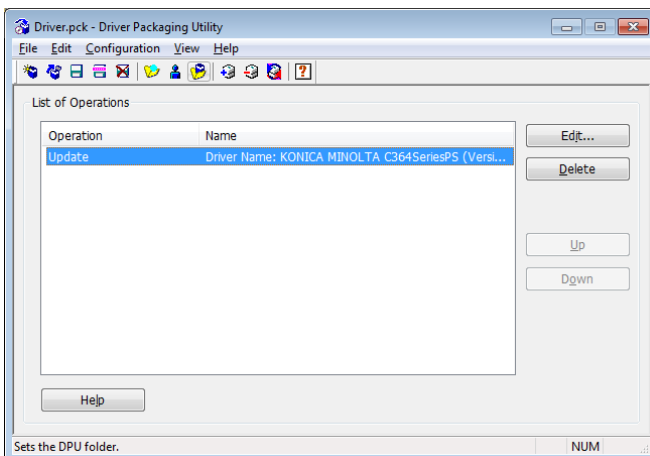


(5) In "Path to Printer Driver" of the [Driver] tab, specify the absolute path of the folder in which the "32-bit Windows" or "64-bit Windows" printer driver is saved.



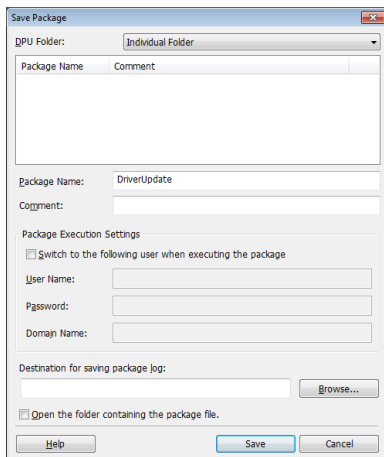
(6) Make settings of other tabs as necessary and click [OK].

(7) The "Update" operation is added to "List of Operations" on the main screen.

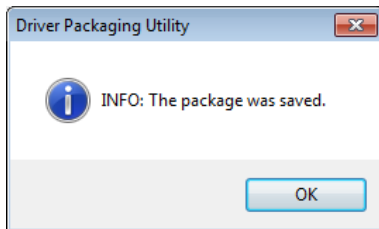


(8) On the main screen, click [File] - [Save As] in that order.

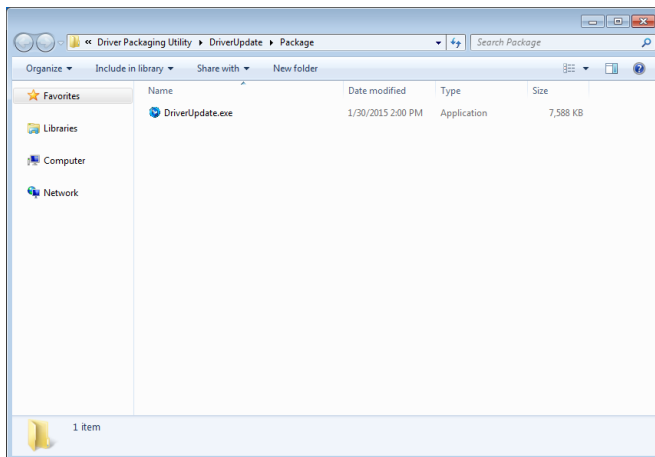
(9) In "Save Package", type the "Package Name" and click [Save].



(10) Click [OK].



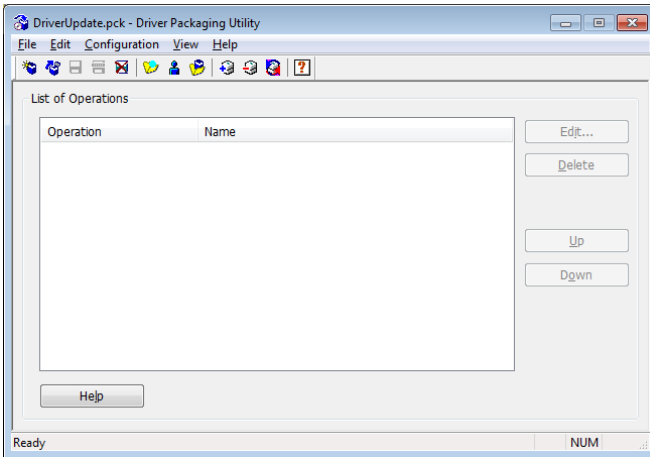
(11) The EXE file of the created package is saved in the DPU folder.



3-3. Creating printer driver delete package

The following describes the procedure to be followed when creating a package that includes the "Delete Driver" operation. This package is created to uninstall the existing printer driver installed in a computer to which the package is distributed.

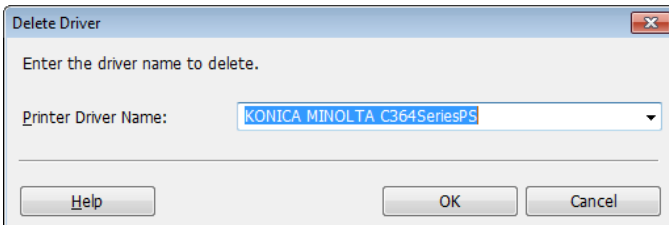
(1) Start Driver Packaging Utility.



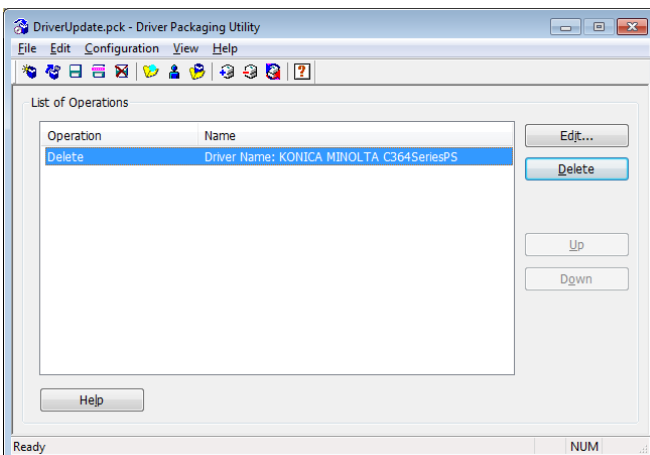
(2) On the main screen, click [File] - [New Package] in that order.

(3) On the main screen, click [Edit] - [Delete Driver] in that order.

(4) Select the driver to be deleted from the "Printer Driver Name" drop-down list and click [OK].

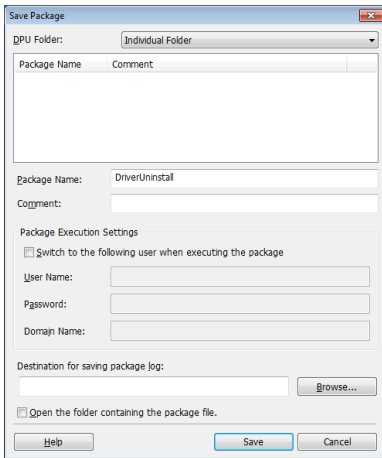


(5) The "Delete" operation is added to "List of Operations" on the main screen.

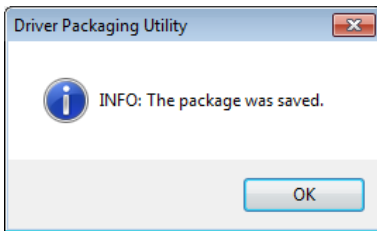


(6) On the main screen, click [File] - [Save As] in that order.

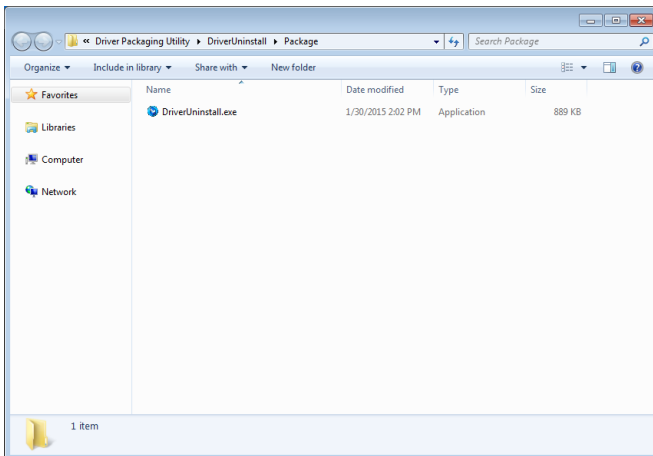
(7) In "Save Package", type the "Package Name" and click [Save].



(8) Click [OK].



(9) The EXE file of the created package is saved in the DPU folder.



3-4. Creating printer driver mixed package

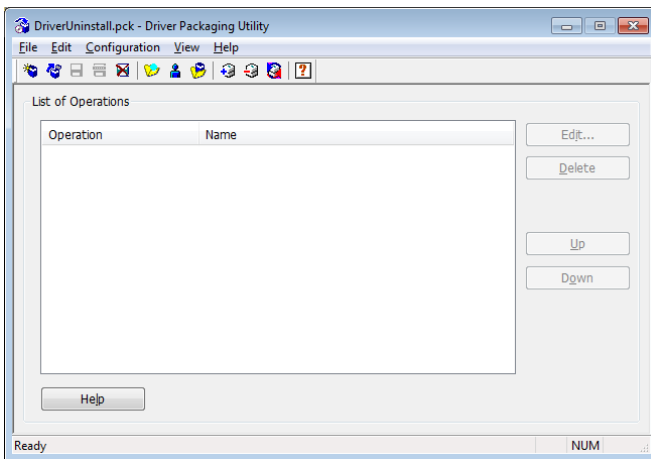
The following describes the procedure to be followed when creating a package that includes two or more operations. This package is created to execute "Add Printer", "Update Driver", and "Delete Driver" operations using a single package.

The following procedure applies to creating a package that includes "Add Printer" and "Delete Driver" operations.

[Note]

When adding two or more operations to a single package, only one operation, but not two or more, can be added to each printer driver.

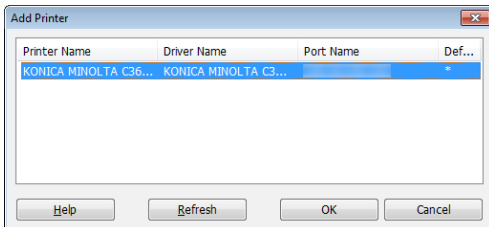
(1) Start Driver Packaging Utility.



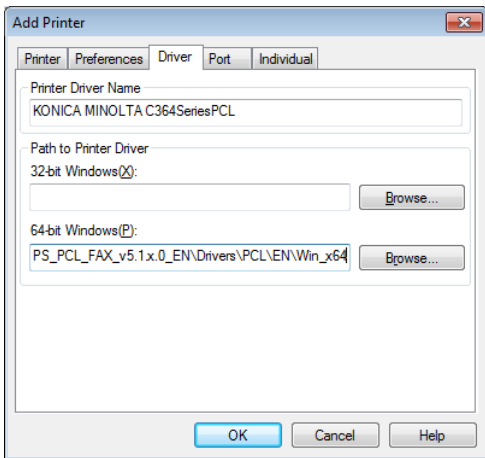
(2) On the main screen, click [File] - [New Package] in that order.

(3) On the main screen, click [Edit] - [Add Printer] in that order.

(4) Select the printer to be added from List of Add Printer and click [OK].

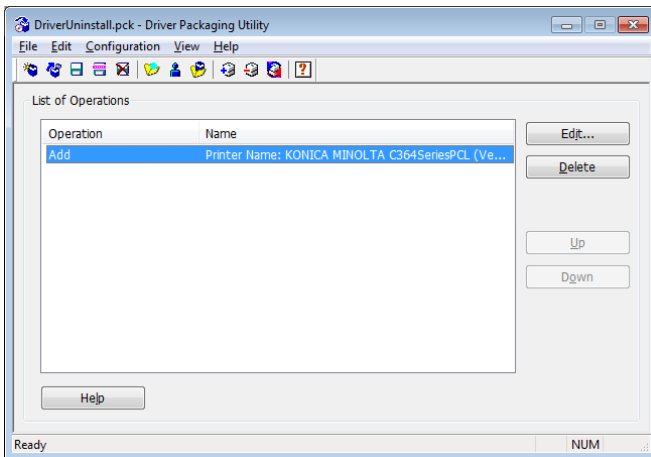


(5) Click the [Driver] tab and, in "Path to Printer Driver", specify the absolute path of the folder in which the "32-bit Windows" or "64-bit Windows" printer driver is saved.



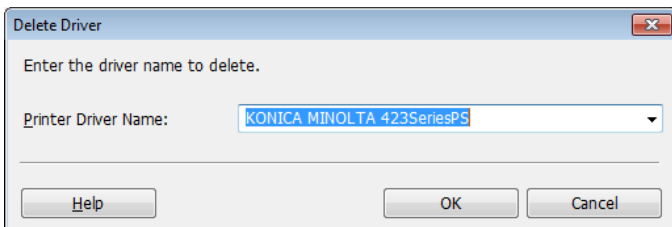
(6) Make settings of other tabs as necessary and click [OK].

(7) The "Add" operation is added to "List of Operations" on the main screen.

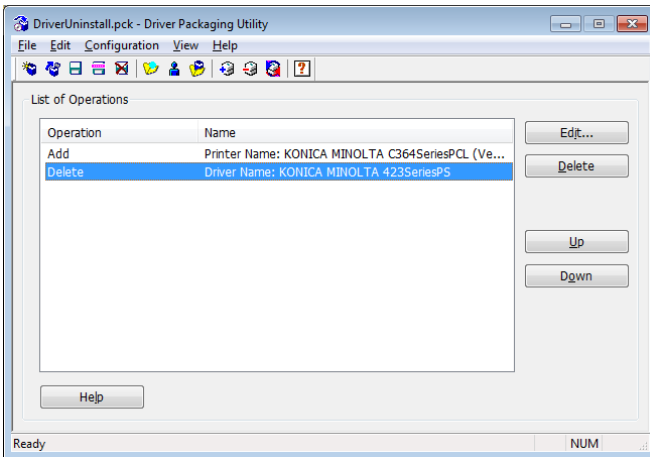


(8) On the main screen, click [Edit] - [Delete Driver] in that order.

(9) Select the driver to be deleted from the "Printer Driver Name" drop-down list and click [OK].

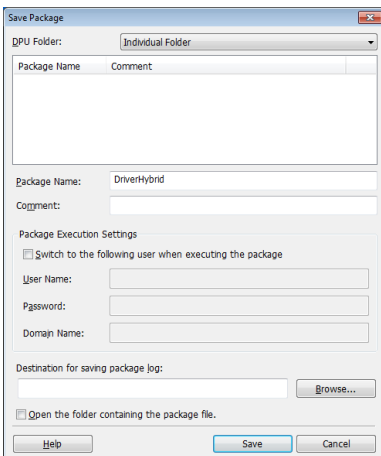


(10) The "Delete" operation is added to "List of Operations" on the main screen.

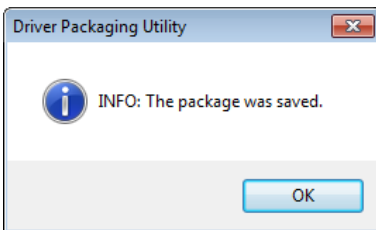


(11) On the main screen, click [File] - [Save As] in that order.

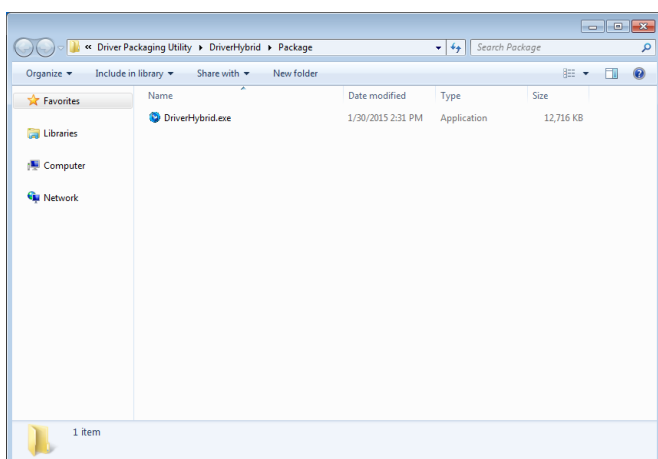
(12) In "Save Package", type the "Package Name" and click [Save].



(13) Click [OK].



(14) The EXE file of the created package is saved in the DPU folder.



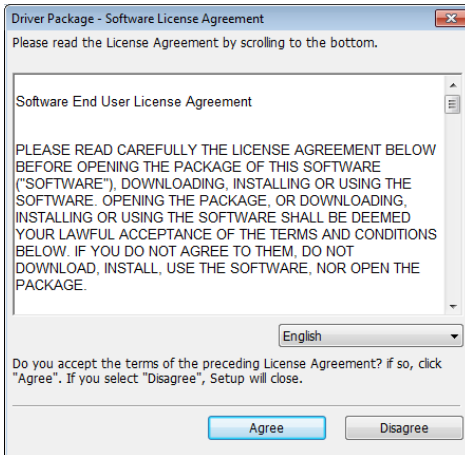
3-5. Using the package

The following describes how to use the created package.

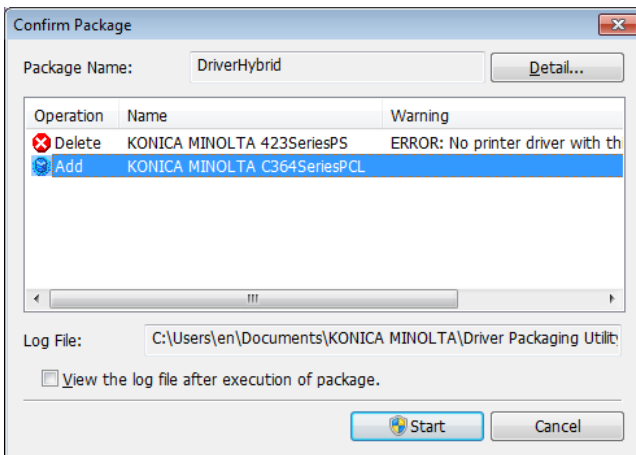
(1) Copy the EXE file of the created package to the target computer.

(2) Execute the EXE file.

(3) Click [Agree].



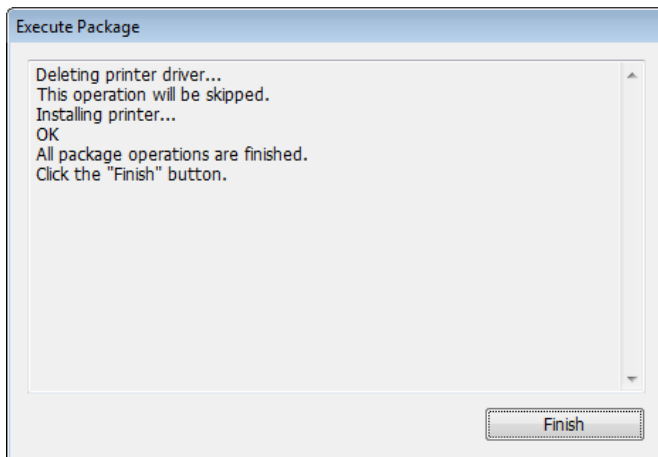
(4) Click [Start].



[Note]

An error message appears under "Warning", if the operation is not executed.

(5) Click [Finish].



[Note]

A prompt may be issued to restart the computer depending on details of the operation executed.

4. Option settings

The following describes option settings available for using the package even more conveniently.

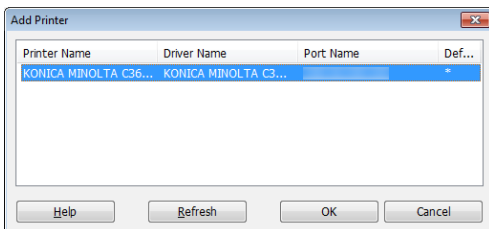
4-1. Copying and default setting of Printing Preferences

The Printing Preferences setting values of the printer selected with "Add Printer" can be copied and incorporated as default values of Printing Preferences in the computer that has executed the package.

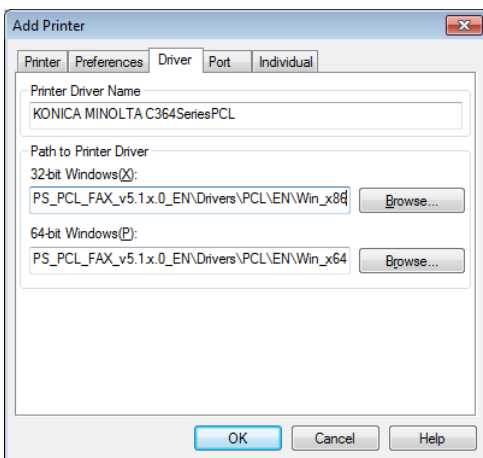
(1) Start Driver Packaging Utility.

(2) On the main screen, click [Edit] - "Add Printer" in that order.

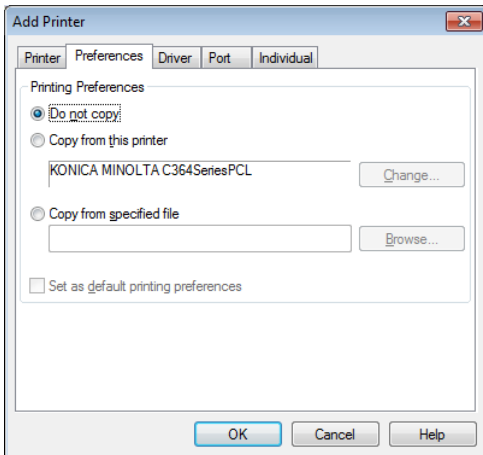
(3) Select the printer from the list.



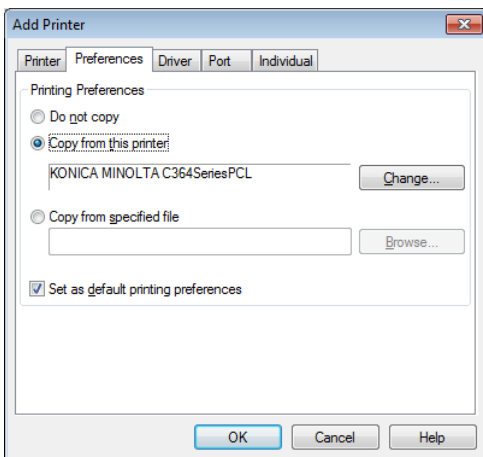
(4) Click the [Driver] tab and make the printer driver settings.



(5) Click the [Preferences] tab.



(6) In "Preferences", select "Copy from this printer" and select "Set as default printing preferences".

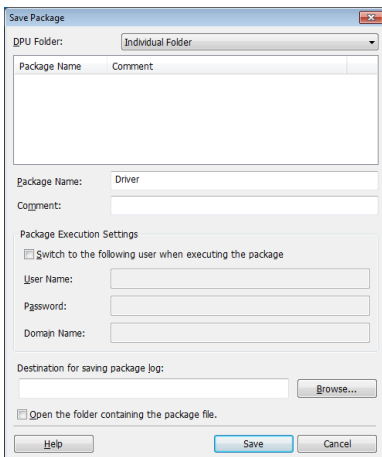


- Clicking [Change] will open Printing Preferences of the selected printer.

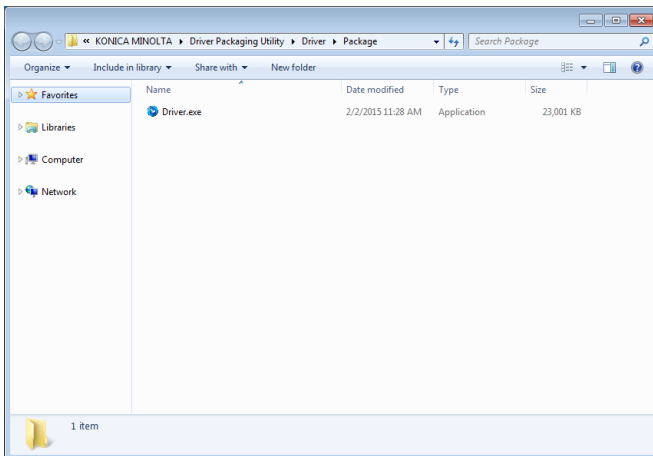
(7) Click [OK].

(8) On the main screen, click [File] - "Save As" in that order.

(9) Type the name of the package to be saved in "Package Name" and click [Save].



(10) This creates the package in which Printing Preferences of the printer selected in "Add Printer" are incorporated as the default values.



4-2. Individual Settings for each individual user

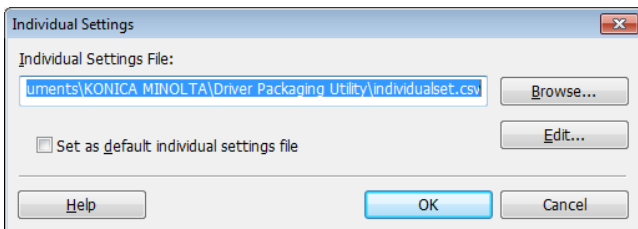
By making Individual Settings when the "Add Printer" or "Update Driver" operation is added during creation of a package, the Printing Preferences of the printer driver can be set for each individual user. To make the Individual Settings for each user, edit the Individual Settings file.

4-2-1. Editing Individual Settings file

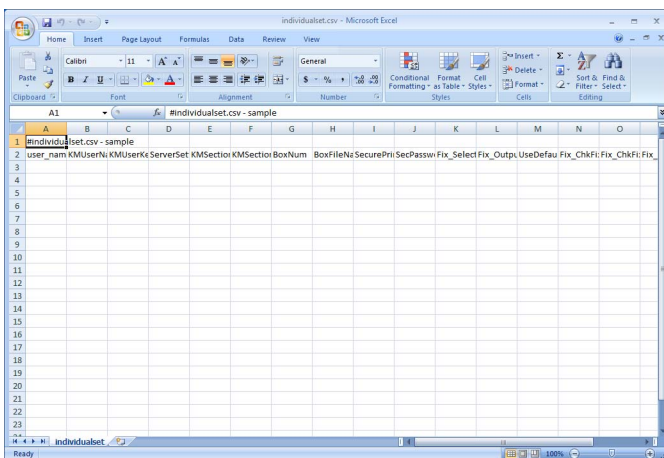
The following describes the procedure to edit the Individual Settings file. The Individual Settings file is in the CSV format and thus requires spreadsheet software, such as Microsoft Excel.

(1) On the main screen, click [Configuration] - [Individual Settings] in that order.

(2) Click [Edit] of "Individual Settings File".



(3) Edit and save the CSV file opened in the spreadsheet software.



[Note]

The row having the first column that starts with # is a comment row. The first row after the comment row is the title row. The "user_name" column within the title row is the user name column, with each of the remaining columns representing the item name of each of Individual Settings items. In each row following the title row, enter the user name and the Individual Settings value for each user who executes the package. The user name to be set varies depending on the Individual Settings method.

See the table below for each of the setting items and specific setting details.

Setting item name	Setting details
user_name	<p>Set the name of the computer to which the Individual Settings are applied and the user name of the user account. The computer name and the user name are checked against the computer that executes the package and each of the setting values of Individual Settings is applied. If the computer and the user executing the package participate in a domain, enter the domain name in place of the computer name. The Individual Settings are not applied, if there are no rows of blank user names.</p> <p>Enter the computer name(or domain name) and the user name as follows: "Computer Name(or Domain Name) executing the package" "Logon User Name"</p>
KMUserName	Enter and set "User Name" of "User Authentication".
KMUserKey	Enter and set "Password" of "User Authentication".

Setting item name	Setting details
ServerSetting	<p>Entering each of the following keywords allows [Server Setting] of [User Authentication Server Settings] to be set to a corresponding one of "Server 1 to 20" and "Device".</p> <ul style="list-style-type: none"> - 1 (Server 1) - 2 (Server 2) - 3 (Server 3) - 4 (Server 4) - 5 (Server 5) - 6 (Server 6) - 7 (Server 7) - 8 (Server 8) - 9 (Server 9) - 10 (Server 10) - 11 (Server 11) - 12 (Server 12) - 13 (Server 13) - 14 (Server 14) - 15 (Server 15) - 16 (Server 16) - 17 (Server 17) - 18 (Server 18) - 19 (Server 19) - 20 (Server 20) - 101 (Device)
KMSectionName	Enter and set [Department Name] of [Account Track].
KMSectionKey	Enter and set [Password] of [Account Track].
BoxNum	Enter and set [User Box Number] of [Save in User Box].
BoxFileName	Enter and set [File Name] of [Save in User Box].
SecurePrintId	Enter and set [Secure Print ID] of [Secure Print].
SecPassword	Enter and set [Password] of [Secure Print].
Fix_SelectColor	<p>Entering the following keyword allows the selection state of [Select Color] to be set.</p> <ul style="list-style-type: none"> - GrayScale (Gray Scale)
Fix_OutputMethod	<p>Entering each of the following keywords allows the selection state of [Output Method] to be set.</p> <ul style="list-style-type: none"> - NormalPrint (Print) - SecurePrint (Secure Print)

Setting item name	Setting details
	<ul style="list-style-type: none"> - SaveBox (Save in User Box) - SaveBoxAndPrint (Save in User Box/Print) - ProofAndPrint (Proof Print) - TouchAndPrint (ID&Print)
UseDefaultLoginUserName	<p>Entering the following keyword sets the default setting of [User Name] of [Recipient User] to "Widows Login ID".</p> <ul style="list-style-type: none"> - Enable (Widows Login ID) <p>[Note] This disables "User Name" specified in [KMUserName].</p>
Fix_ChkFixUserName	<p>Entering the following keyword sets [Do not allow changes to the User Name] to "ON" or "OFF".</p> <ul style="list-style-type: none"> - ON (enables [Do not allow changes to the User Name]) - OFF (disables [Do not allow changes to the User Name])
Fix_ChkFixPassword	<p>Entering the following keyword sets [Do not allow changes to the Password] to "ON" or "OFF".</p> <ul style="list-style-type: none"> - ON (enables [Do not allow changes to the Password]) - OFF (disables [Do not allow changes to the Password])
Fix_FIXSecurePrint	<p>Entering the following keyword sets [Secure Print only] to "ON" or "OFF".</p> <ul style="list-style-type: none"> - ON (enables [Secure Print only]) - OFF (disables [Secure Print only])
PublicUser	<p>Entering the following keyword sets the default setting of [User Authentication] to "Public User" or "Recipient User".</p> <ul style="list-style-type: none"> - PublicUser (Public User) - RecipientUser (Recipient User)
InterimPublicUser	<p>Entering the following keyword sets [Public User] of [Enhanced Authentication Server Settings] to "ON" or "OFF".</p> <ul style="list-style-type: none"> - InterimPublicUserON (enables [Public User]) - InterimPublicUserOFF (disables [Public User])
AuthUseEngine	<p>Entering the following keyword sets the default setting of [MFP Authentication] to "ON" or "OFF".</p> <ul style="list-style-type: none"> - ON (enables [MFP Authentication]) - OFF (disables [MFP Authentication])

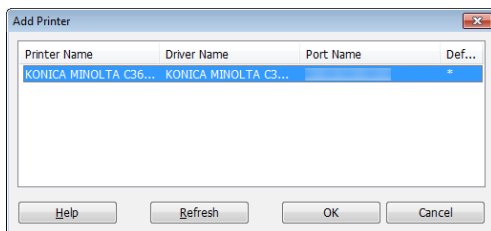
4-2-2. Enabling Individual Settings

The following describes the procedure to enable Individual Settings during the setting of the "Add Printer" or "Update Driver" operation.

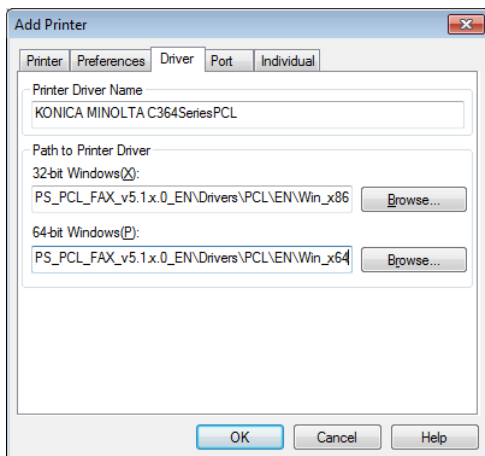
(1) Start Driver Packaging Utility.

(2) On the main screen, click [Edit] - "Add Printer" or [Update Driver] in that order.

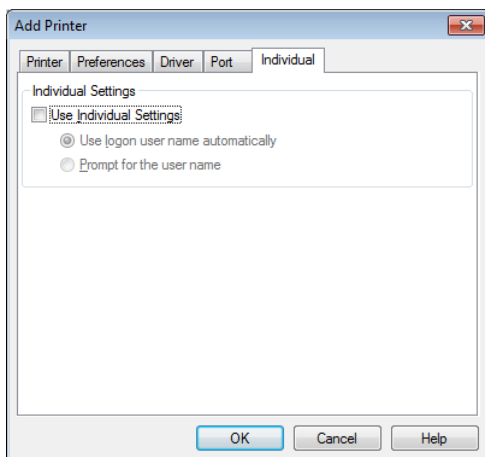
(3) Select the printer or printer driver from the list.



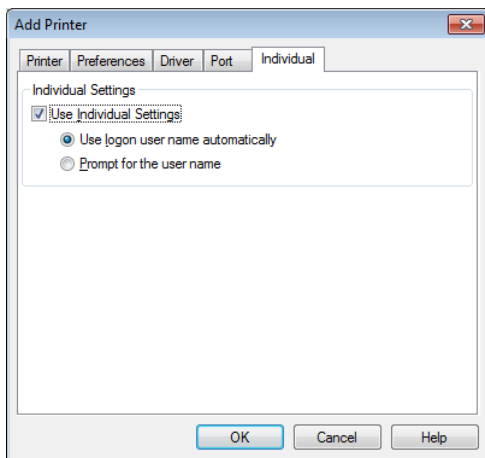
(4) Click the [Driver] tab and make the printer driver settings.



(5) Click the [Individual] tab.



(6) In "Individual", select "Use Individual Settings" and then select "Use logon user name automatically" or "Prompt for the user name".



- "Use logon user name automatically" causes "Computer Name (or Domain Name)\ User Name" of the Individual Settings file to be automatically checked against "Computer Name (or Domain Name)\ User Name" of the computer that has executed the package and the setting values to be incorporated.
- "Prompt for the user name" causes a dialog to appear during the execution of the package to thereby prompt for the user name to be entered. The user name entered by the user is checked against the user name set in the Individual Settings file and the corresponding setting value is incorporated.

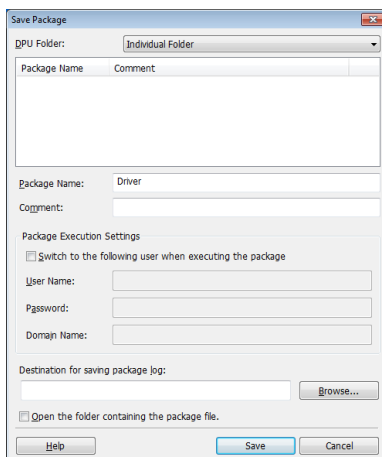
[Note]

If the corresponding user name is found in the Individual Settings file, the setting value is not incorporated.

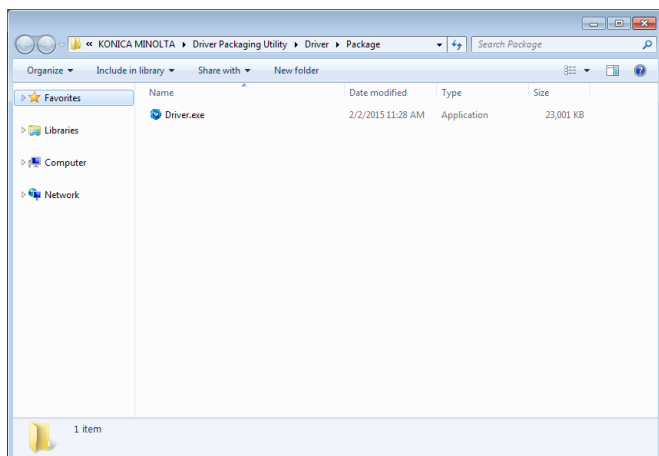
(7) Click OK.

(8) On the main screen, click [File] - "Save As" in that order.

(9) Enter the name of the package to be saved in "Package Name" and click [Save].



(10) This creates a package in which Individual Settings are enabled.

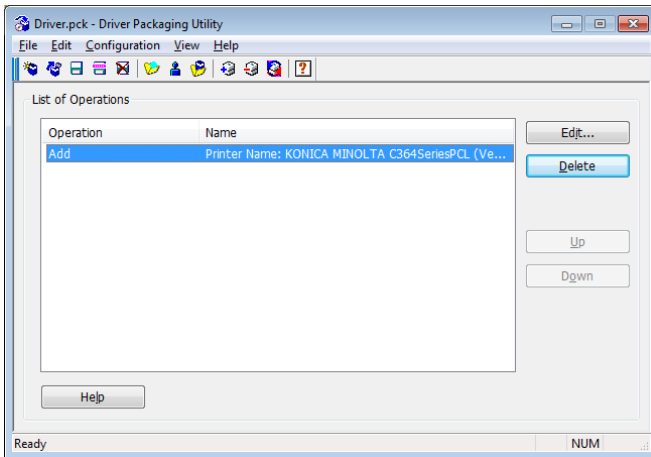


4-3. Setting for executing the package by administrator authority

The following describes the procedure to make settings that allow the package to be executed through switching users.

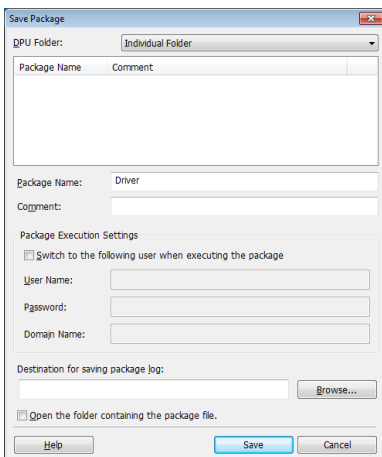
(1) Start Driver Packaging Utility.

(2) Add necessary operations to "List of Operations".

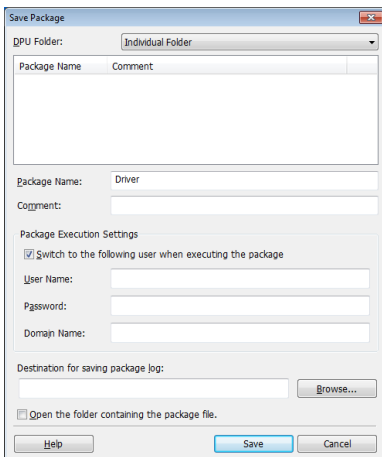


(3) On the main screen, click [File] - "Save As" in that order.

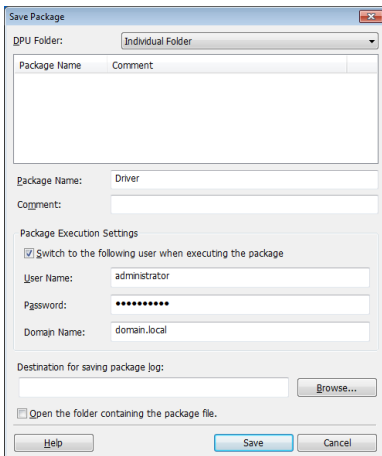
(4) Enter the name of the package to be saved in "Package Name".



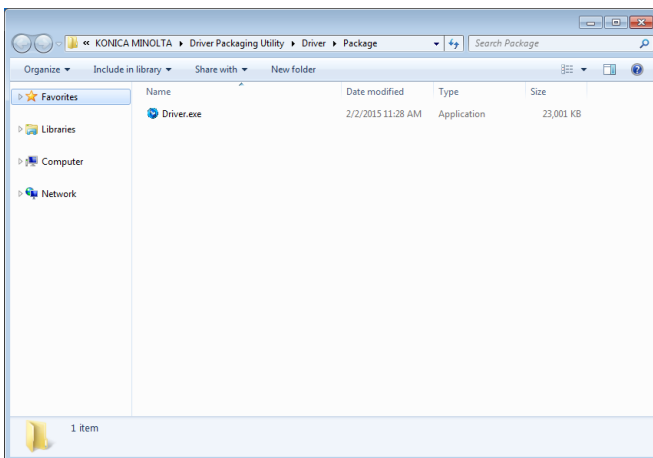
(5) In "Package Execution Settings", select "Switch to the following user when executing the package".



(6) In "Package Execution Settings", enter "User Name", "Password", and "Domain Name" of the user account having the administrator authority and click [Save].



(7) This creates a package that can be executed through switching to the set user account.





KONICA MINOLTA

<http://konicaminolta.com>