

**BILL OF MATERIAL**

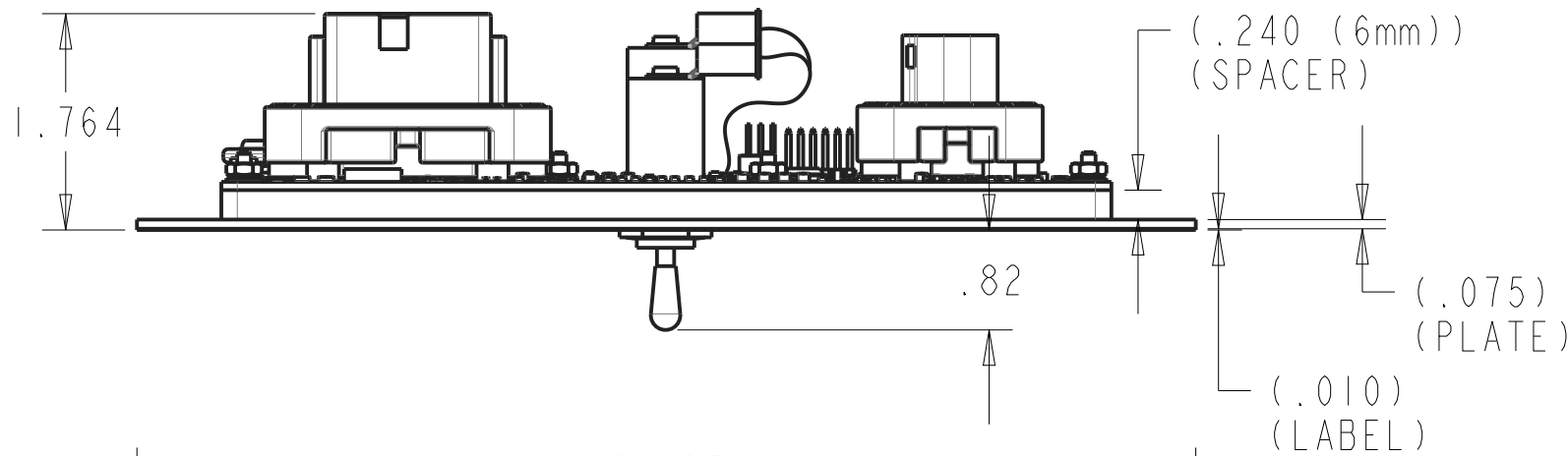
| ITEM | QTY PER | PART No. | CODE | DESCRIPTION  | SUPPLIER PART No. |
|------|---------|----------|------|--|-------------------|
| 1    | 1       | 3009135  | MFG  | PANEL, HME, PUMP SHIFT, ROAD-TO-PUMP (TOP), PUMP-TO-ROAD (BOTTOM), W/STUDS |                   |
| 2    | 1       | 3009136  | MFG  | SPACER, HME, PUMP SHIFT  |                   |
| 3    | 6       | 4050889  | PUR  | WASHER, FLAT, #4, SS, .031 THICK, FASTENAL                                 | 1171003           |
| 4    | 6       | 4050890  | PUR  | WASHER, LOCK, #4, SS, FASTENAL   | 1171053           |
| 5    | 6       | 4050907  | PUR  | NUT, HEX, #4-40, STAINLESS, FASTENAL                                       | 70704             |
| 6    | 1       | 4060064  | MFG  | SOFTWARE, HME PUMP SHIIFT INTERLOCK PANEL                                  |                   |
| 7    | 1       | 4090195  | MFG  | PCB, HME PUMP SHIFT PANEL  |                   |

**TABLE A - LABEL**

| CODE | LABEL, SPACER DESCRIPTION   | IC#        |
|------|---|------------|
| 01   | LABEL, HME, PUMP SHIFT, ROAD-TO-PUMP (TOP), PUMP-TO-ROAD (BOTTOM), WITH INDICATORS.           | 3009134-01 |
| 02   | LABEL, HME, PUMP SHIFT, ROAD-TO-PUMP (TOP), PUMP-TO-ROAD (BOTTOM), WITHOUT INDICATORS.        | 3009134-02 |
| 03   | LABEL, HME, PUMP SHIFT, FORD, ROAD-TO-PUMP (TOP), PUMP-TO-ROAD (BOTTOM), WITHOUT INDICATORS.  | 3009134-03 |
| 04   | LABEL, HME, PUMP SHIFT, DODGE, ROAD-TO-PUMP (TOP), PUMP-TO-ROAD (BOTTOM), WITHOUT INDICATORS. | 3009134-04 |

**B**

SEE TABLE A FOR LABEL CODE  
SEE SHEET 2 FOR LABEL LAYOUTS  
(3009134-01 SHOWN)

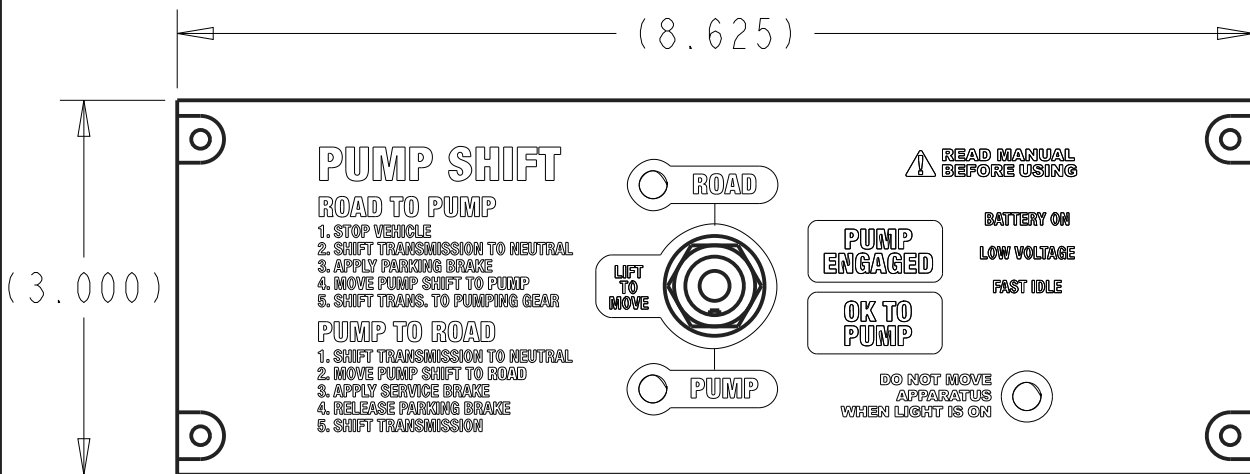


NUT W/TOGGLE SWITCH

SCALE 0.500

(2.625) (SPACER)

(7.250) (SPACER)



SCALE 0.650

CUSTOMER CODE → LABEL CODE (SEE TABLE A)

IC P/N 3050658-68-XX

**NOMENCLATURE**

SHEET SIZE  
B

TOLERANCES  
UNLESS OTHERWISE NOTED  
.XX ± .01 .XXX ± .005  
FRAC. ± 1/64 ANG. ± 1/2

| DESCRIPTION   |     |     |  |           |
|---|-----|-----|--|-----------|
| ASSEMBLY, HME, LABEL ON PANEL, W/SPACER, PUMP SHIFT PANEL CUT-OUT |     |     |  |           |
| REV   | BY  | APP | CHANGE DESCRIPTION   | DATE      |
| A   | PJS | --- | INITIAL RELEASE  | 1/24/19   |
| B   | PJS | --- | ADD ITEMS 03 & 04 TO TABLE A. ADD VIEWS 03 & 04 TO SHEET 2 | 2/7/19    |
| -   | --- | --- | -  | ***-**-** |



**INNOVATIVE CONTROLS, INC.**  
 560 Braddock Avenue  
 East Pittsburgh, PA 15112  
 (412)-824-2264 FAX (412)-824-2339

SHEET 1 OF 3

REV  
B

**3050658-68-XX**

**IMPORTANT NOTE**  
 THIS DOCUMENT IS CONFIDENTIAL PROPERTY OF INNOVATIVE CONTROLS INC. IT IS NOT TO BE USED OR REPRODUCED IN ANY MANNER NOR SUBMITTED TO OTHER PARTIES FOR EXAMINATION WITHOUT THE PRIOR APPROVAL OF INNOVATIVE CONTROLS INC. ALL RIGHTS OF DESIGN AND INVENTION ARE RESERVED.

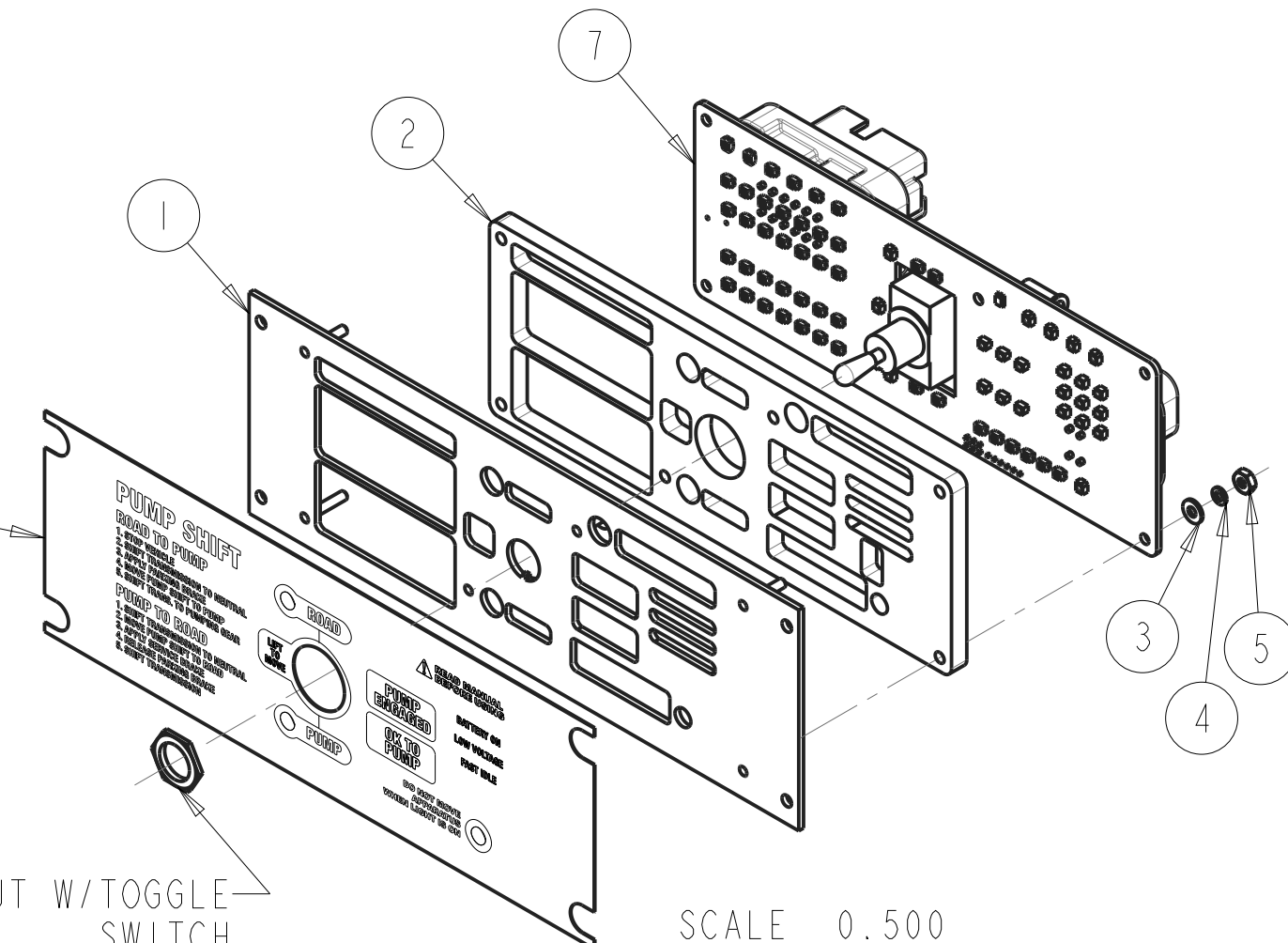
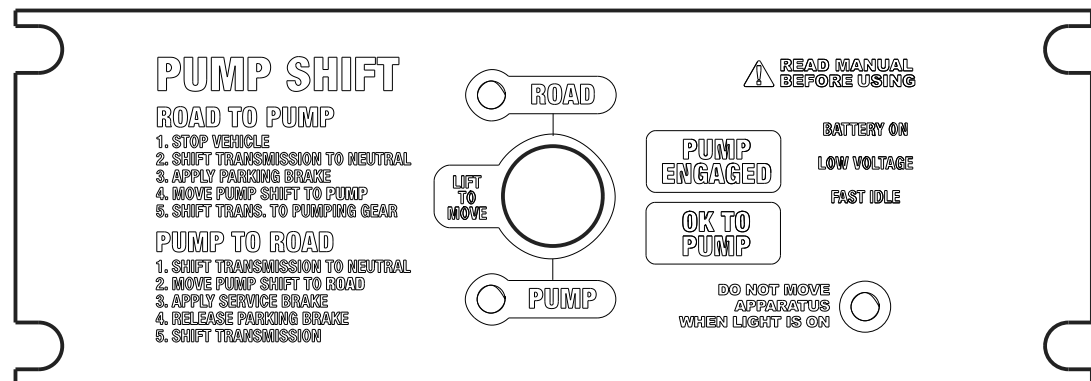


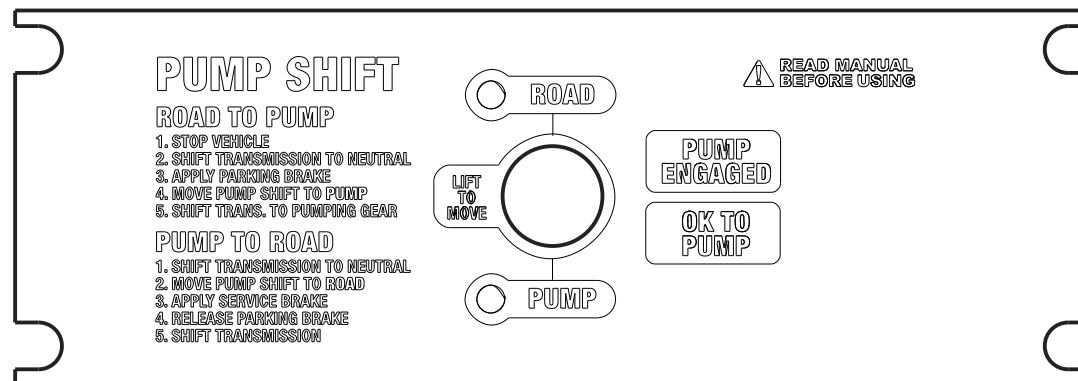
TABLE A - LABEL

| CODE | LABEL, SPACER DESCRIPTION   | IC#        |
|------|---|------------|
| 01   | LABEL, HME, PUMP SHIFT, ROAD-TO-PUMP (TOP), PUMP-TO-ROAD (BOTTOM), WITH INDICATORS.           | 3009134-01 |
| 02   | LABEL, HME, PUMP SHIFT, ROAD-TO-PUMP (TOP), PUMP-TO-ROAD (BOTTOM), WITHOUT INDICATORS.        | 3009134-02 |
| 03   | LABEL, HME, PUMP SHIFT, FORD, ROAD-TO-PUMP (TOP), PUMP-TO-ROAD (BOTTOM), WITHOUT INDICATORS.  | 3009134-03 |
| 04   | LABEL, HME, PUMP SHIFT, DODGE, ROAD-TO-PUMP (TOP), PUMP-TO-ROAD (BOTTOM), WITHOUT INDICATORS. | 3009134-04 |

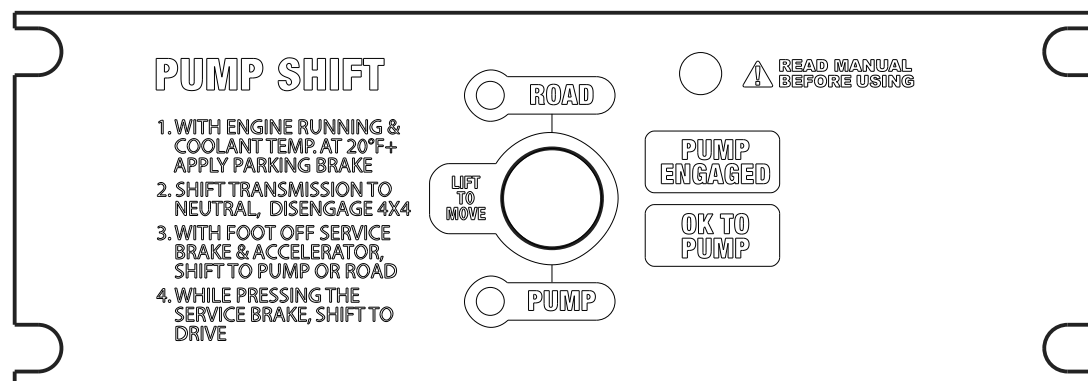
B



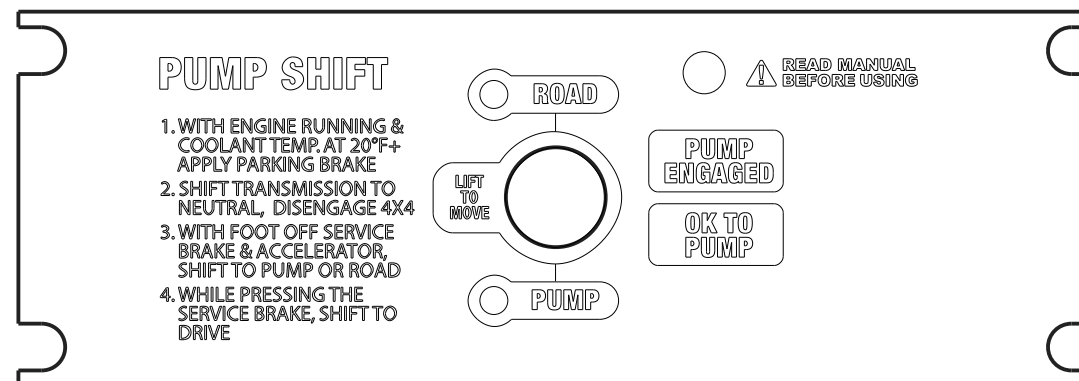
3009134-01  
WITH INDICATORS  
SCALE 0.650



3009134-02  
WITHOUT INDICATORS  
SCALE 0.650



B FORD, 3009134-03  
WITHOUT INDICATORS  
SCALE 0.650



B DODGE, 3009134-04  
WITHOUT INDICATORS  
SCALE 0.650

| DESCRIPTION   |  |  |  |
|---|--|--|--|
| ASSEMBLY, HME, LABEL ON PANEL, W/SPACER, PUMP SHIFT LABEL LAYOUTS |  |  |  |



INNOVATIVE CONTROLS, INC.  
560 Braddock Avenue  
East Pittsburgh, PA 15112  
(412)-824-2264 FAX (412)-824-2339

| REV | BY  | APP | CHANGE DESCRIPTION   | DATE         |
|-----|-----|-----|--|--------------|
| A   | PJS | --- | INITIAL RELEASE  | 1/24/19      |
| B   | PJS | --- | ADD ITEMS 03 & 04 TO TABLE A. ADD VIEWS 03 & 04 TO SHEET 2 | 2/7/19       |
| -   | --- | --- | -  | ** - * - * * |

SHEET 2 OF 3

REV B

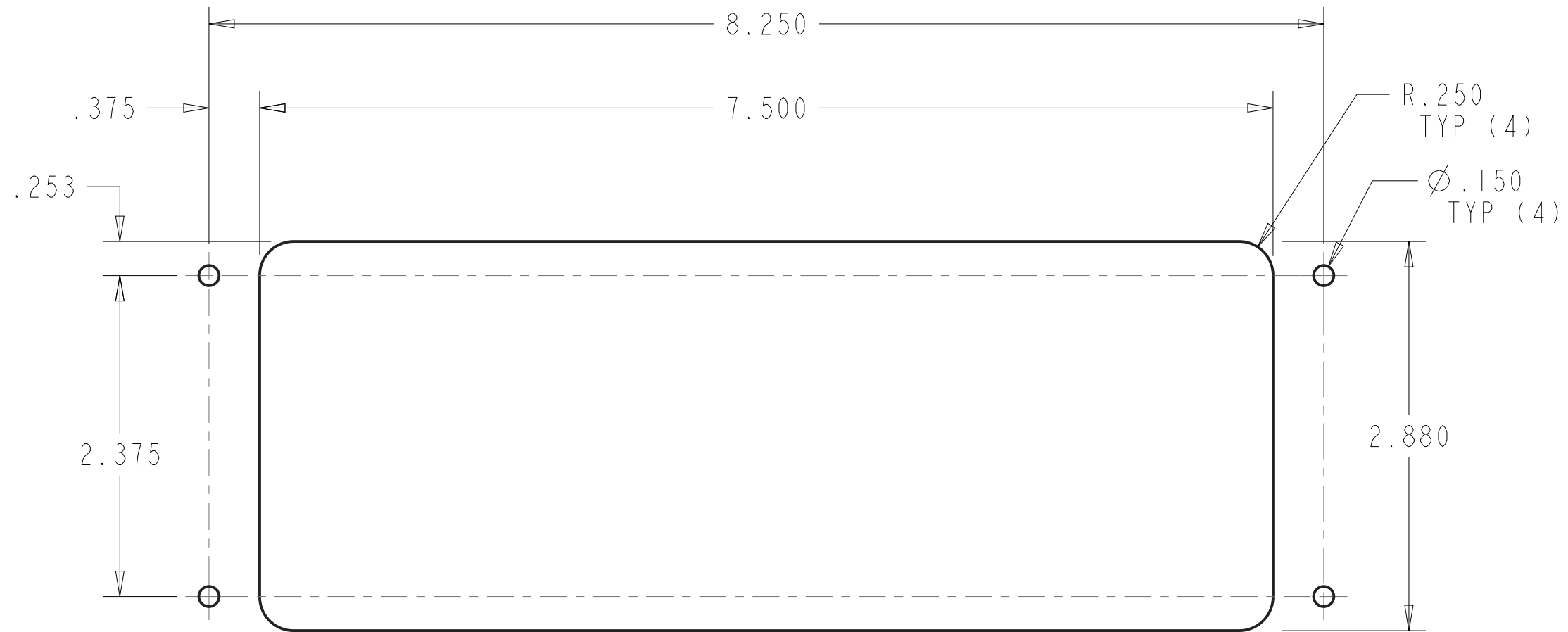
3050658-68-XX

IMPORTANT NOTE

THIS DOCUMENT IS CONFIDENTIAL PROPERTY OF INNOVATIVE CONTROLS INC. IT IS NOT TO BE USED OR REPRODUCED IN ANY MANNER NOR SUBMITTED TO OTHER PARTIES FOR EXAMINATION WITHOUT THE PRIOR APPROVAL OF INNOVATIVE CONTROLS INC. ALL RIGHTS OF DESIGN AND INVENTION ARE RESERVED.

SHEET SIZE B

TOLERANCES UNLESS OTHERWISE NOTED  
.XX ± .01 .XXX ± .005  
FRAC. ± 1/64 ANG. ± 1/2



**PANEL CUT-OUT**  
SCALE 1.000

| DESCRIPTION   |    |     |                    |      |
|---|----|-----|--------------------|------|
| ASSEMBLY, HME, LABEL ON PANEL, W/SPACER, PUMP SHIFT |    |     |                    |      |
| PANEL CUTOUT  |    |     |                    |      |
| REV   | BY | APP | CHANGE DESCRIPTION | DATE |



**INNOVATIVE CONTROLS, INC.**  
560 Braddock Avenue  
East Pittsburgh, PA 15112  
(412)-824-2264 FAX (412)-824-2339

|   |     |     |  |              |
|---|-----|-----|--|--------------|
| A | PJS | --- | INITIAL RELEASE  | 1/24/19      |
| B | PJS | --- | ADD ITEMS 03 & 04 TO TABLE A. ADD VIEWS 03 & 04 TO SHEET 2 | 2/7/19       |
| - | --- | --- | -  | ** - ** - ** |

SHEET 3 OF 3

REV  
**B**

**3050658-68-XX**

**IMPORTANT NOTE**

THIS DOCUMENT IS CONFIDENTIAL PROPERTY OF INNOVATIVE CONTROLS INC. IT IS NOT TO BE USED OR REPRODUCED IN ANY MANNER NOR SUBMITTED TO OTHER PARTIES FOR EXAMINATION WITHOUT THE PRIOR APPROVAL OF INNOVATIVE CONTROLS INC. ALL RIGHTS OF DESIGN AND INVENTION ARE RESERVED.

SHEET SIZE  
**B**

TOLERANCES  
UNLESS OTHERWISE NOTED  
.XX ± .01 .XXX ± .005  
FRAC. ± 1/64 ANG. ± 1/2