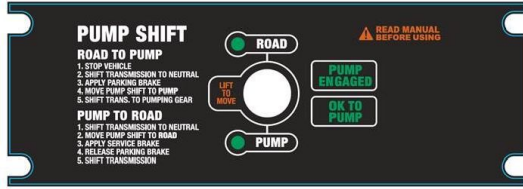
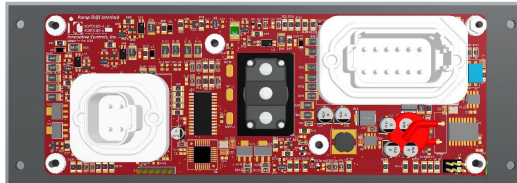


PUMP SHIFT INTERLOCK PANEL 3050658-68-05



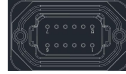
PUMP SHIFT INTERLOCK PANEL 3050658-68-05 (rear)



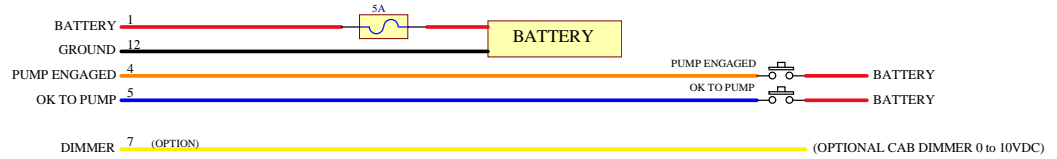
DT15-4P ROAD / PUMP Solenoids

DT15-12PA Vehicle Interface

Vehicle Interface



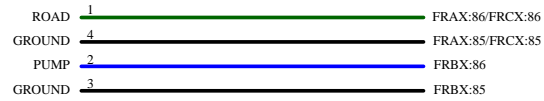
DT15-12PA Mating connector is DT06-12SA with W12S wedglock



ROAD / PUMP Solenoids



DT15-4P Mating connector is DT06-4S with W4S wedglock



PROPRIETARY AND CONFIDENTIAL
 INNOVATIVE CONTROLS INC. PROPRIETARY - THE
 INFORMATION CONTAINED IN THIS DRAWING IS THE SOLE
 PROPERTY OF INNOVATIVE CONTROLS INC. ANY
 REPRODUCTION IN PART OR AS A WHOLE WITHOUT THE
 WRITTEN PERMISSION OF INNOVATIVE CONTROLS INC. IS
 PROHIBITED.

Drawing Number: 3050658-68-05		
Variant: HME	Revision: 1.0	Drawn By: KW
Project Title: Pump Shift Panel	Checked By: AC	
Description: Pump Interlock Panel Wiring - No Interlock (HME)		
Date: 9/14/2021	Time: 3:44:43 PM Sheet 1 of 1	
File: 3050658-68-05_PumpShiftNoInterlockWiring_Sheet1_Rev1-1_SchDoc		

Innovative Controls
 560 Braddock Ave.
 East Pittsburgh, PA 15112
 T: 412.824.2264
 F: 412.824.2339
 www.innovativecontrolsinc.com

