

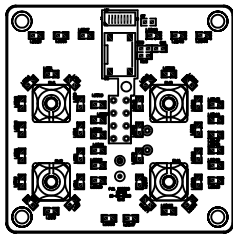
1 2 3 4 5 6

**LEGEND**

- POWER
- GROUND
- OUTPUTS
- INPUTS

NOTE: Colors are for representation purposes only and may not be the same as the colors of the actual wires in the harness.

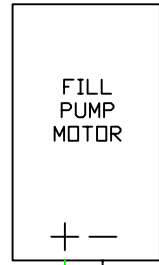
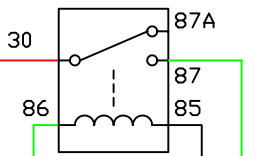
SWITCH PANEL CONTROLLER  
CLASS 1 PN 111602



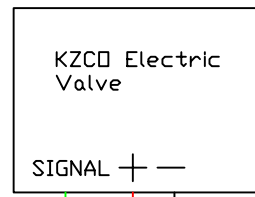
NOTE: For single tank systems, the pins not shown on the switch panel controller are left unconnected.

PN 003-1090-00-0 (12V)

MOTOR RUN RELAY  
CLASS 1 PN 12193601 (12V)

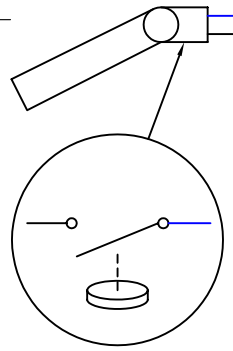


PN 538-5500-00-0 (12V)



SIGNAL	VALVE POSITION
12V	FILL
0V	FLUSH

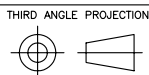
Level Sensor



5 1 8 4 7

DIRECT CONNECTION TO 12V DC

**DRAWING NOTES:**  
UNLESS OTHERWISE SPECIFIED  
1. ALL dimensions are in inches  
2. Do not scale drawing  
3. Decimal Tolerance  
X.XX = +/--.01  
X.XXX = +/--.005  
X.XXXX = +/--.0005  
4. Angle Tolerance .5 deg.



**Class 1** A unit of **DEX** IDEX CORPORATION  
807 N.W. 27th AVE.  
Ocala, Florida 34475  
Phone 352-629-5020  
FAX 352-629-2902

**EZ-FILL SYSTEM ELECTRICAL DIAGRAM, SINGLE TANK**

CAGE IDENT. NO. 06CG4	COMPLETED 1/11/05	DRAWN BY MH	CHECKED AK	PROJECT ---
SIZE <b>A</b>	DRAWING NUMBER <b>112583</b>			REV -
SCALE NONE				SHEET 1 OF 1

REV	ECR	BY	DATE	DESCRIPTION
-	----	--	--/--/--	-

1 2 3 4 5 6