

Class1



PRICE LIST

Pressure Gauges

Suggested List

Digital Gauges		
PSIS	Digital Pressure Gauge (with 600 psi transducer)	\$458.33
Chrome bezel available at no extra charge		
102190	SSD Display only	\$325.00
102008	Installation kit	\$10.00
102161	Transducer	\$258.33
103523	"Pressure" tag	\$3.33
102060	5' Harness	\$33.33
102035	10' Harness	\$33.33
102061	20' Harness	\$50.00
102271	30' Harness	\$50.00



Liquid Filled Mechanical Gauges		
Call for part numbers or see the Class1 Catalog	2.5" Vacuum/ Pressure Gauge (below 3,000 psi)	\$49.18
	2.5" Vacuum/ Pressure Gauge (5,000 - 7,500 psi)	\$70.00
	2.5" Vacuum/ Pressure Gauge (10,000 psi)	\$128.33
	3.5" Vacuum/ Pressure Gauge (below 5,000 psi)	\$77.33
	3.5" Vacuum/ Pressure Gauge (10,000 psi)	\$150.00
	4.5" Vacuum/ Pressure Gauge	\$104.88
	4.5" Duplex Gauge	\$508.33
	6" Vacuum/ Pressure Gauge	\$305.57



Dry Mechanical Gauges		
Call for part numbers	2.5" Vacuum/ Pressure Gauge (below 3,000 psi)	\$45.85
	2.5" Vacuum/ Pressure Gauge (5,000 - 7,500 psi)	\$66.67
	2.5" Vacuum/ Pressure Gauge (10,000 psi)	\$125.00
	3.5" Vacuum/ Pressure Gauge (below 5,000 psi)	\$74.00
	3.5" Vacuum/ Pressure Gauge (10,000 psi)	\$146.67
	4.5" Vacuum/ Pressure Gauge	\$101.55



Internally Illuminated Dry Mechanical Gauges (Red, Green, Amber, Yellow)		
Call for part numbers	2.5" Vacuum/Pressure Gauge (below 3,000 psi)	\$107.51
	2.5" Vacuum/ Pressure Gauge (5,000 - 7,500 psi)	\$128.33
	2.5" Vacuum/ Pressure Gauge (10,000 psi)	\$186.66
	3.5" Vacuum/Pressure Gauge (below 5,000 psi)	\$144.00
	3.5" Vacuum/ Pressure Gauge (10,000 psi)	\$216.67
	4.5" Vacuum/ Pressure Gauge	\$179.88
	6.0" Vacuum/ Pressure Gauge	\$388.90

Some dual scale gauges available in most sizes



Internally Illuminated Dry Mechanical Gauges (blue)		
Call for part numbers or see the Class1 Catalog	2.5" Vacuum/Pressure Gauge (below 5,000 psi)	\$199.18
	2.5" Vacuum/ Pressure Gauge (5,000 - 7,500 psi)	\$220.00
	2.5" Vacuum/ Pressure Gauge (10,000 psi)	\$278.33
	3.5" Vacuum/ Pressure Gauge (below 5,000 psi)	\$310.67
	3.5" Vacuum/ Pressure Gauge (10,000 psi)	\$383.34
	4.5" Vacuum/ Pressure Gauge	\$421.55
	6.0" Vacuum/ Pressure Gauge	\$705.57

Duplex Gauge - 4.5"		
32751483	Duplex Gauge 0-300 psi	\$508.33
32751484	Duplex Gauge 0-400 psi	\$508.33
32751485	Duplex Gauge 0-600 psi	\$508.33

2 1/2", 3 1/2" Gauge



Gauge Accessories		
102718	D.O.T. Push On 90° Swivel fitting for Gauges	\$3.33
105548	Chrome bezel - 2.5"	\$16.67
105546	Chrome bezel - 3.5"	\$16.67
See Misc Page	Colored Corner Tags	\$5.00

QC Test Kits		
91476195	QC Test Kit 0-300 psi	\$416.67
92471673	QC Test Kit 0-400 psi	\$416.67
92471674	QC Test Kit 0-600 psi	\$416.67
92541676	3.5" Replacement Gauge 0 - 30" vacuum	\$77.33
92540689	3.5" Replacement Gauge 0 - 300 PSI	\$77.33
92541677	3.5" Replacement Gauge 0 - 400 PSI	\$77.33
92541678	3.5" Replacement Gauge 0 - 600 PSI	\$77.33

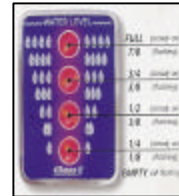


QC Test Kit

Tank Level Gauges

Suggested List

Intelli-tank 4 light for water and foam		
ITL	Kit for water	\$295.00
ITL	Kit for foam	\$307.50
ITL Dual Display	Dual display kit for water	\$495.00
ITL Dual Display	Dual display kit for foam	\$507.50
106877	4 light solid state driver module	\$266.67
106878	Mini Display remote dash indicator (rocker size)	\$66.67
Individual components for above kits		
106299	4 light display (12 volt)	\$200.00
106296	4 light display (24 volt)	\$200.00
108594	4 light display (12 volt) longer bezel	\$216.67
108595	4 light display (24 volt) longer bezel	\$216.67
106280	Water tag	\$4.17
106281	Foam tag	\$4.17
106282	Foam A tag	\$4.17
106283	Foam B tag	\$4.17
106743	Water tag for mini display	\$6.33
107584	Foam tag for mini display	\$6.33
106690	10' Harness (transducer to master display)	\$33.33
106777	20' Harness (transducer to master display)	\$41.66
106778	30' Harness (transducer to master display)	\$50.00
106779	40' Harness (transducer to master display)	\$58.33
106691	Pigtail, 4 light slave display	\$30.00
106692	Pigtail, driver module	\$33.33
102162	Transducer	\$153.33
102219	Brass bushing for foam level systems	\$12.50



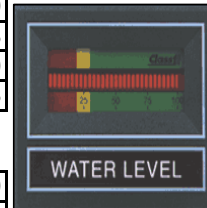
Intelli-tank

SSD (Bar-Graph) Tank level for water and foam		
TLW	Kit for water	\$375.00
TLF	Kit for foam	\$383.33
TLWD2	Dual display kit for water	\$650.00
TLFD2	Dual display kit for foam	\$658.33

Chrome bezel available at no extra charge

Individual components for above kits

102245	SSD display	\$325.00
102008	Installation Kit	\$10.00
101999	Water tag	\$3.33
101998	Foam tag	\$3.33
102269	Foam A tag	\$3.33
102273	Foam B tag	\$3.33
102193	5' Harness (transducer to display)	\$33.33
102194	10' Harness (transducer to display)	\$33.33
102195	20' Harness (transducer to display)	\$50.00
102729	30' Harness (transducer to display)	\$50.00
102438	10' "Y" Harness (display to display)	\$73.33
102294	20' "Y" Harness (display to display)	\$83.33
102295	30' "Y" Harness (display to display)	\$95.00
102731	40' "Y" Harness (display to display)	\$108.33
102162	Transducer	\$153.33
102219	Brass bushing for foam level systems	\$12.50



Vacuum vent

Other tank level accessories		
107540	Zero pressure vacuum vents - bolt on	\$30.00
107470	Zero pressure vacuum vents - weld on	\$30.00
107585	Zero pressure vacuum vents MNPT threads	\$30.00

Flowminder Systems

Suggest List

Flowminder System "SSD Series" Kit		
FMS	Flowminder Single Display	\$746.67
FMD	Flowminder Dual Display (single transmitter)	\$1,101.67
Chrome bezel available at no extra charge		

Flowminder "Super" System "SSD Series" Kit		
FMS	Flowminder Single Display	\$746.67
PSIS	Digital Pressure Gauge Single	\$458.33
FMD	Flowminder Dual Display	\$1,101.67
PSID	Digital Pressure Gauge Dual System	\$750.00

Flowminder "Value" System "SSD Series" Kit		
FVS	Flowminder Value System (with 2.5" gauge)	\$841.67
FVS	Flowminder Value System (with 3.5" gauge)	\$916.66

Flowminder Demo. Kit "SSD Series"		
102322	Flowminder Demo Kit (pressure & flow)	\$1,350.00

Flowminder Components/Parts for SSD Series		
102046	Flowminder Display Only	\$350.00
102357	Conventional Bezel	\$400.00
106826	Value System Bezel (2.5" gauge) w/FMS display	\$375.00
106827	Value System Bezel (3.5" gauge) w/FMS display	\$380.00
102714	Flowminder Paddle Wheel Transmitter	\$500.00
102008	Installation Kit	\$10.00
103522	Flowminder Tag	\$3.33
102064	5' Harness (transmitter to display)	\$33.33
102033	10' Harness (transmitter to display)	\$50.00
103321	15' Harness (transmitter to display)	\$50.00
102065	20' Harness (transmitter to display)	\$66.67
103322	25' Harness (transmitter to display)	\$66.67
103165	30' Harness (transmitter to display)	\$95.00
102438	10' Dual Display Harness (display to display)	\$73.33
102294	20' Dual Display Harness (display to display)	\$73.33
102295	30' Dual Display Harness (display to display)	\$95.00
102731	40' Dual Display Harness (display to display)	\$108.33
102088	Read Total Button (normally 1 per truck)	\$30.00
See Misc Page	Colored Corner Bezels (set of four)	\$5.00

Flowminder Mounting Accessories		
4842010	2" Saddle Clamp	\$125.00
4843010	2.5" Saddle Clamp	\$125.00
4844010	3" Saddle Clamp	\$125.00
4846010	4" Saddle Clamp	\$125.00
4845010	5" Saddle Clamp	\$183.33
SFM	Stainless Steel Weld Boss	\$68.75
309020	Steel Weld Boss	\$68.75
309010	Aluminum Weld Boss	\$68.75
309030	Brass Weld Boss	\$68.75

Flowminder System "SSD Series" Retrofit Kit		
FMS	Flowminder Retrofit Single Display	\$796.67
Specify "Conventional Bezel" when ordering		



SSD Display



- INSET COLORS**
- Black
 - Blue
 - Red
 - Yellow
 - White
 - Silver
 - Green
 - Orange
 - Burgundy
 - Brown
 - Gray
 - Beige
 - Lime
 - Pink
 - Purple
 - Red
 - Lt Blue

Customer to specify inset color, gauge pressure range, dial color and cable length.

Value System



Paddlewheel Transmitter



Flowminder Conventional Bezel

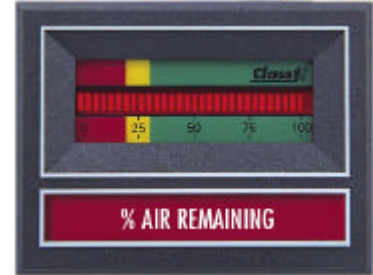
Minders

Suggested List

Airminder Systems "New SSD Series"		
AMS	Airminder Single Display System 7,500 psi	\$725.00
AMD	Airminder Dual Display System 7,500 psi	\$1,150.00

Chrome bezel available at no extra charge
Individual components for above kits

102263	Airminder Display Only	\$350.00
102008	Installation kit	\$10.00
101994	Tag, % Air Remaining	\$3.33
102606	Transducer 7500 psi	\$300.00
102670	5' Harness	\$33.33
102671	10' Harness	\$33.33
102672	20' Harness	\$50.00
102673	30' Harness	\$50.00
100571	Buzzer	\$31.00
102088	Alarm silence button	\$30.00



SSD Display

Loadminder Systems "New SSD Series"		
LMS	Loadminder Single Display System	\$725.00
LMD	Loadminder Dual Display System	\$1,150.00

Chrome bezel available at no extra charge
Individual components for above kits

102342	Loadminder Display Only	\$350.00
101995	Tag, Low Level Warning	\$3.33
102008	Installation kit	\$10.00
102606	Transducer 7500 psi	\$300.00
102670	5' Harness	\$33.33
102671	10' Harness	\$33.33
102672	20' Harness	\$50.00
102673	30' Harness	\$50.00
100571	Buzzer	\$31.00
102088	Alarm silence button	\$30.00



Transducer

Oxygenminder Systems "New SSD Series"		
OMS	Oxygenminder System 3,000 psi	\$658.33

Chrome bezel available at no extra charge
Individual components for above kit

102264	Oxygenminder Display Only	\$350.00
102008	Installation kit	\$10.00
101669	Tag, % Oxygen Remaining	\$3.33
102606	Transducer 7500 psi	\$300.00
102670	5' Harness	\$33.33
102671	10' Harness	\$33.33
102672	20' Harness	\$50.00
102673	30' Harness	\$50.00
100571	Buzzer	\$31.00
102088	Alarm silence button	\$30.00



REQUIREMENTS: Pulse generator or Allison world transmission.

Officer's Speedometer "New SSD Series"		
SPD	Officer's Speedometer	\$291.67
102008	Installation kit	\$10.00
102007	Display only	\$266.67
102272	18" pigtail	\$20.00
101997	Tag, Speedometer	\$3.33

Load Managers, Subpanels, Relay Boards

Suggested List

Total System Manager		
101490	Total System Manager (positive outputs)	\$666.67
101540	Total System Manager (ground outputs)	\$666.67
101750	Total System Manager (24 VDC System)	\$708.33
101538	Mating Pigtail Connector	\$41.67
101536	Mating Connector/Pin Kit	\$25.00

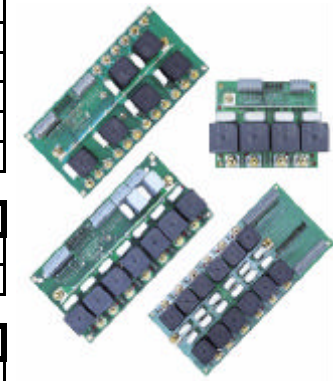


Total System Manager

Electrical System Manager		
105228	Electrical System Manager (polarity selectable outputs)	\$391.67
105586	Electrical System Manager with 8 relays	\$541.67

Low Voltage Monitors		
100480	Low Voltage Monitor	\$141.67
100545	Low Voltage Monitor with Built in Buzzer	\$261.67

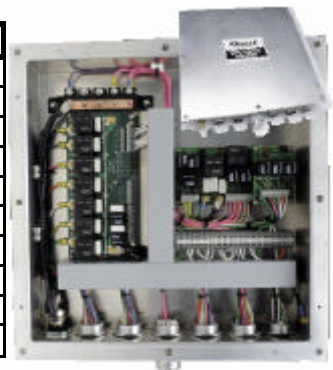
Power Distribution Relay Boards		
100719	3 Relay Maker Turn Module (with enclosure)	\$125.00
100687	4 Relay Board	\$191.67
100759	4 Relay Board (with enclosure)	\$231.67
100455	9 Relay Board	\$306.67
100921	9 Relay Board (with enclosure)	\$366.67
100715	12 Relay Board	\$383.33
100718	12 Relay Board (with enclosure)	\$435.00
100471	Auxiliary Function Board	\$181.67



Interlock Modules		
100713	Interlock Master Module	\$180.00
101620	Engine Interface/ Interlock Module	\$491.67

Electrical Sub Panel		
100544	Body Electrical Sub Panel	\$1,375.00

Relays, Breakers and Solenoids		
100303	10 Amp Auto Resetting Breaker	\$5.00
100273	20 Amp Auto Resetting Breaker	\$5.00
100248	30 Amp Auto Resetting Breaker	\$5.00
100982	120 Amp Auto Resetting Sealed Breaker	\$40.00
100247	150 Amp Auto Resetting Sealed Breaker	\$40.00
100741	150 Amp Manual Resetting Sealed Breaker	\$58.33
100556	120 Amp Auto Resetting Sealed Breaker	\$183.33
100459	15 Amp VF4 Relay	\$5.00
100278	40/ 30 Amp VF4 Relay	\$5.00
100334	70 Amp VF4 Relay	\$10.83



Body Sub-Panel

Pricing and Availability subject to change without notice. Price Effective Date: 06/01/04
All rights reserved, Copyright Class 1®

Governors, Throttles, Engine Information

Suggested List

"Captain" Pressure Governor		
105244	Universal Pressure Governor (complete system)	\$1,916.67
107396	Governor Display Only	\$1,666.67
105247	Harness	\$100.00
100581	Transducer	\$326.67

Mechanical Engine Governors and Information		
100352	PTO Generator Governor	\$2,916.67
100509	Pressure Governor	\$2,916.67

Command Master™ Control Panel		
111085	Command Master™ - Pump panel version	\$4,166.67



Captain Governor

Engine Status Center		
101847	Engine Status Center	\$875.00
101975	Mating Pigtail	\$41.67

ENFO III		
102652	ENFO III English (SAE J1587 compliant)	\$525.00
102721	ENFO III Metric	\$525.00
102826	Mating Pigtail	\$20.00
ENFO#656	Round ENFO II Display with Sensors	\$916.67

ENFO IV		
108661	ENFO IV (SAE J1939 compliant)	\$441.67
110346	Mating Pigtail	\$58.33



Command Master™

Throttle Components		
100076	Detroit Diesel® DDEC II, III, IV	\$375.00
101558	Engines (Includes 103103 Adapter) and International® DT530E, DT466E, V-MAC (Includes Adapter)	\$408.33
103103	Adapter Only	\$33.33

"Exec" Throttle System		
EXEC200#8424	For Caterpillar® 3100, 3116, 3126, 3176, 3406, C10 & C12	\$708.33
EXEC200#8425	For Caterpillar Interface Module Only	\$375.00



ENFO III

Sun Shields for Governors and ENFO Center		
107881	Fire Commander Shield	196.67
107882	Governor, ENFO III, ESC	133.33



ENFO IV



Engine Status Center

Caps, Plugs & Adaptors

Suggested List

Chrome Plated Brass Caps, Plugs & Adaptors		
107658	Cap 1.5 NST with Chain	\$11.62
108997	Cap 1.5 NST with Lug Vent	\$16.08
107659	Plug 1.5 NST with Chain	\$11.51
107660	Adapter 1.5 FNST 1.5 FNPT SWVL	\$14.44
107661	Adapter 1.5 FNST 1.5 FNST SWVL	\$22.20
107662	Adapter 1.5 MNST 1.5 MNST	\$10.04
107663	Adapter .5 MNST 1.5 MNPT	\$10.04
107664	Adapter 2.5 FNST 1.5 MNST	\$14.20
107665	Cap 2.5 NST with Chain	\$18.11
108007	Cap 2.5" NST with Lug Vent	\$19.22
107666	Plug 2.5 NST with Chain	\$23.51
107667	Adapter 2.5 MNST 2.5 MNST	\$20.69
107683	Adapter 2.5 MNH 2.5 FNPT 2.63 LG	\$25.89
107684	Adapter 2.5 MNH 2.5 FNPT 3.63 LG	\$25.89
107668	Adapter 2.5 FNPT 2.5 FNPT SWVL	\$43.24
107669	Adapter 2.5 FNST 2.5FNST SWVL	\$42.11
107670	Adapter 2.5 MNST 2.5 MNPT	\$18.07
107671	Adapter 2.5 FNST 2.5 MNPT SWVL	\$37.87
107672	Adapter 2.5 FNST Male Garden Hose	\$11.93
107673	Adapter 2.5 FST 2.5 MNST 30 DEG	\$52.78
108061	Adapter 3.0 FNST 2.5 MNST 30 DEG	\$75.51
107674	Cap 3.0 NST with Chain	\$31.13
108008	Cap 3.0 NST with Lug Vent	\$32.16
107675	Plug 3.0 NST with Chain	\$30.11
107676	Adapter 3.0 FNST 3.0 FNPT SWVL	\$63.53
107677	Adapter 3.0 FNST 3.0 FNST SWVL	\$56.40
107678	Adapter 3.0 FNST 3.0 MNST 30 DEG	\$80.53
107679	Adapter 3.0 MNH 3.0 FNPT	\$32.22
108162	Cap 4.5 NST (Flat Cap) Vent	\$98.13
107680	Cap 5.0 NST (Flat Cap)	\$100.36
108344	Cap 5.0 NST (Flat Cap) Vent	\$102.58
107681	Cap 6.0 NST Recessed	\$117.69
109401	Cap 6.0 NST Recessed Assembled with Vent	\$128.25
108346	Cap 6.0 NST Recessed Vent	\$119.91
107682	Cap 6.0 NST (Flat Cap)	\$106.84
108345	Cap 6.0 NST (Flat Cap) Vent	\$109.07
108168	Spanner Wrench	\$12.67
108501	Chrome Insert - 6" Cap	\$8.33
108596	Polydome Tag - Hale Logo	\$9.83



Plumbing Controls and Drains

Suggested List

Locking Top Mount Controls		
100984	Top Mount Control Assembly - Straight	\$96.67
101005	Top Mount Control Assembly - Angled	\$96.67
100983	Center Fill Extrusion (48" Long)	\$66.67
101923	Extension Lever	\$18.08



Locking Push-Pull Controls		
100348	Locking Push- Pull Control Assembly	\$53.33
100348-S	Locking Push- Pull Control Assembly with Ball Swivel	\$58.33
100348-SF	Locking Push-Pull Control Assembly with Female Ball Swivel	\$58.33
100348-Q1	Rack and Sector Control Assembly	\$46.67



Push-Pull T-Handles, Tag Adapter Bezel & Test Plugs		
102709	Gauge Test Plug - Nickel Plated	\$12.50
100294	T-Handle 3/4" Rod	\$14.23
100295	T-Handle 1/2" Rod	\$14.23
100170	Adapter/ Bezel	\$4.17
100384	Bushing 3/8" - 24 Threaded	\$12.00



Drains and Bleeders		
14BV (BVR)	1/4" Ball Valve	\$22.92
38BV (BVR)	3/8" Ball Valve	\$23.33
12BV (BVR)	1/2" Ball Valve	\$24.17
34BV (BVR)	3/4" Ball Valve	\$28.00
10BV (BVR)	1" Ball Valve	\$39.45
34BV90	3/4" Ball Valve with 90° Elbow	\$34.67
105315	3/4" Automatic Drain	\$31.08
110527	3/4" Air Operated Drain	\$60.00
104961	6 Port Manual Master Drain	\$130.00
107370	12 Port Manual Master Drain	\$141.67
103005	Automatic Master Drain	\$208.33
104031	Air Switch	\$26.67
105120	Petcock Cooler Valve	\$10.83



Air Operated Cylinder & Brackets		
10BRK	1" Bracket, Air Cylinder Mount	\$46.67
15BRK	1.5" Bracket, Air Cylinder Mount	\$49.17
20BRK	2" Bracket, Air Cylinder Mount	\$50.00
25BRK	2.5" Bracket, Air Cylinder Mount	\$50.83
30BRK	3" Bracket, Air Cylinder Mount	\$60.83
100386	1" Bracket, Air Cylinder Mount 90°	\$46.67
15BRK90	1.5" Bracket, Air Cylinder Mount 90°	\$63.33
20BRK90	2" Bracket, Air Cylinder Mount 90°	\$65.83
25BRK90	2.5" Bracket, Air Cylinder Mount 90°	\$66.67
30BRK90	3" Bracket, Air Level Mount 90°	\$76.83
320600	Air Cylinder for 1" Valve	\$116.67
400550	Air Cylinder for 1.5" - 2.5" Valve	\$146.67
630550	Air Cylinder for 3" Valve	\$243.33



High Pressure Flexible Hose & Couplings

Suggested List

Non-Assembled High Pressure Flexible Piping		
34EC	.75" 90° Elbow Pipe Coupling (brass)	\$12.58
34MC	.75" Male Pipe Coupling	\$3.75
34FP	.75" HPFP (per foot)	\$3.33
10MC	1" Male Pipe Coupling (brass)	\$14.17
10FC	1" Female Pipe Coupling (brass)	\$28.50
10VC	1" Victaulic Coupling (brass)	\$20.17
10FE	1" Ferrule	\$6.00
10FP	1" HPFP (per foot)	\$6.50
15LC	1.5" Long Male Pipe Coupling	\$29.17
15MC	1.5" Male Pipe Coupling	\$17.67
15FC	1.5" Female Pipe Coupling (brass)	\$35.00
15VC	1.5" Victaulic Coupling	\$16.17
15FE	1.5" Ferrule	\$8.67
15FP	1.5" HPFP (per foot)	\$7.67
20LC	2" Long Male Pipe Coupling	\$36.67
20MC	2" Male Pipe Coupling	\$23.13
20FC	2" Female Pipe Coupling	\$51.67
20FE	2" Ferrule	\$11.00
20VC	2" Victaulic Coupling	\$21.00
20FP	2" HPFP (per foot)	\$9.58
25LC	2.5" Long Male Pipe Coupling	\$66.33
25MC	2.5" Male Pipe Coupling	\$48.92
25FC	2.5" Female Pipe Coupling (brass)	\$93.33
25VC	2.5" Victaulic Coupling	\$42.95
25FE	2.5" Ferrule	\$18.42
25FP	2.5" HPFP (per foot)	\$12.33
30LC	3" Long Male Pipe Coupling	\$109.33
30MC	3" Male Pipe Coupling	\$63.33
30FC	3" Female Pipe Coupling (brass)	\$153.33
30VC	3" Victaulic Coupling	\$53.33
30FE	3" Ferrule	\$25.42
30FP	3" HPFP (per foot)	\$15.50
40MC	4" Male Pipe Coupling	\$88.33
40VC	4" Victaulic Coupling	\$81.67
40FE	4" Ferrule	\$41.67
40FP	4" HPFP (per foot)	\$20.50
50VC	5" Victaulic Coupling (cad plated)	\$141.67
50FE	5" Ferrule (cad plated)	\$51.08
50FP	5" (per foot)	\$29.75



- FEATURES:**
- High strength
 - Flexible
 - Easy to install
 - Choice of couplings
 - Economical
 - Abrasive resistant
 - Ozone resistant
 - Prompt shipment



Non-Assembled High Pressure Flexible Piping (Options)		
34D	3/4" Drain Coupling	\$6.67
154B	1.5" Through 4" Base Bracket	\$16.25
20AB	2.0" Aluminum Bracket	\$26.67
25AB	2.5" Aluminum Bracket	\$28.33



Pricing and Availability subject to change without notice. Price Effective Date: 06/01/04
All rights reserved, Copyright Class 1®

Swivel Assemblies

Suggested List

2" Swivel Assembly 90° Victaulic		
102958	Polished	\$165.00
103791	Polished Long Elbow	\$170.00

2" Swivel Assembly Straight Victaulic		
102957	Polished	\$133.33
103787	Polished Long Elbow	\$138.33

2" Swivel Assembly 45° Victaulic		
102959	Polished	\$161.67
103789	Polished Long Elbow	\$166.67

2" Straight Flange Swivel		
104290	Polished	\$158.33
104347	Polished Long Elbow	\$143.33

2" Front Bumper Assembly		
104289	Polished	\$236.67
104392	Polished Long Elbow	\$241.67

5" Front Bumper Assembly		
107898	Suction Elbow with 5" Victaulic Base - 5" NST	\$658.33
107899	Suction Elbow with 5" Victaulic Base - 6" NST	\$675.00
109784	5" Zero-Flex Victaulic Clamp	\$60.00

Inlet Relief Valves		
108320	2.5" Inlet Relief Valve - Victaulic	\$260.00
108319	2.5" Inlet Relief Valve - MNST	\$260.00
107819	2.5" Inlet Relief Valve - MNPT	\$260.00



Pricing and Availability subject to change without notice. Price Effective Date: 06/01/04
All rights reserved, Copyright Class 1®

Push-on Fittings

Suggested List

Brass DOT Fittings		
102718	¼" FNPT X ¼" TUBE, ELBOW 90° (SWIVEL)	\$3.33
104587	¼" TUBE UNION	\$3.67
104588	3/8" TUBE UNION	\$4.00
104589	1/8" MNPT X ¼" TUBE, STRAIGHT	\$1.67
104590	1/8" MNPT X 3/8" TUBE, STRAIGHT	\$2.00
104591	¼" MNPT X ¼" TUBE, STRAIGHT	\$2.00
104592	¼" MNPT X 3/8" TUBE, STRAIGHT	\$2.25
104593	3/8" MNPT X 3/8" TUBE, STRAIGHT	\$2.42
104594	½" MNPT X 3/8" TUBE, STRAIGHT	\$3.50
104595	½" MNPT X ¾" TUBE, STRAIGHT	\$4.58
104596	¾" MNPT X ¾" TUBE, STRAIGHT	\$4.58
104597	1/8" MNPT X ¼" TUBE, ELBOW 45° (NON SWIVEL)	\$3.50
104598	1/8" MNPT X ¼" TUBE, ELBOW 90° (SWIVEL)	\$3.08
104599	1/8" MNPT X 3/8" TUBE, ELBOW 90° (SWIVEL)	\$3.50
104600	¼" MNPT X ¼" TUBE, ELBOW 90° (SWIVEL)	\$3.50
104601	¼" MNPT X 3/8" TUBE, ELBOW 90° (SWIVEL)	\$3.50
104602	3/8" MNPT X 3/8" TUBE, ELBOW 90° (SWIVEL)	\$3.67
104603	½" MNPT X 3/8" TUBE, ELBOW 90° (SWIVEL)	\$4.67
104604	½" MNPT X ¾" TUBE, ELBOW 90° (SWIVEL)	\$12.42
104605	¾" MNPT X ¾" TUBE, ELBOW 90° (NON SWIVEL)	\$5.58
104606	¼" MNPT X ¼" TUBE X ¼" TUBE TEE (SWIVEL)	\$4.83
104609	3/8" FNPT X ¼" TUBE, ELBOW 90° (SWIVEL)	\$4.83
104795	3/8" MNPT X ½" TUBE, ELBOW 90° (SWIVEL)	\$5.67
104796	½" MNPT X ½" TUBE, ELBOW 90° (SWIVEL)	\$6.50
104797	½" MNPT X ½" TUBE, STRAIGHT	\$3.08
104798	¼" MNPT X ¼" TUBE, ELBOW 45° (SWIVEL)	\$3.50
104799	¼" FNPT X ¼" TUBE, STRAIGHT BULKHEAD	\$4.17
104800	¼" MNPT X ½" TUBE, STRAIGHT	\$6.00
104801	¼" TUBE BULKHEAD wd # 1874	\$4.58
104802	3/8" TUBE BULKHEAD	\$5.83
104803	3/8" MNPT X ½" TUBE, STRAIGHT	\$2.58
104804	3/8" MNPT X ¼" TUBE, STRAIGHT	\$3.08
104805	¼" MNPT X 3/8" TUBE, ELBOW 45° (SWIVEL)	\$4.00
104806	3/8" MNPT X ¼" TUBE, ELBOW 90° (SWIVEL)	\$4.33
104807	½" MNPT X 5/8" TUBE, STRAIGHT	\$4.92
104808	3/8" MNPT X 5/8" TUBE, STRAIGHT	\$4.58
104809	½" MNPT X 5/8" TUBE, ELBOW 90° (SWIVEL)	\$7.92
104810	3/8" MNPT X 5/8" TUBE, ELBOW 90° (SWIVEL)	\$10.17
104811	1/8" MNPT X 3/8" ELBOW 45° (SWIVEL)	\$4.92
104812	¼" MNPT X ½" TUBE, ELBOW 45° (SWIVEL)	\$4.92
104813	½" MNPT X 5/8" TUBE, ELBOW 45° (SWIVEL)	\$8.17
104814	½" TUBE BULKHEAD	\$8.17
104816	¼" FNPT X ¼" TUBE, STRAIGHT	\$2.17
104819	¼" MNPT X 3/8" TUBE X 3/8" TUBE TEE (SWIVEL)	\$6.00
104820	5/8" TUBE BULKHEAD	\$12.00
104821	1/8" MNPT X ¼" TUBE X ¼" TUBE RUN TEE (SWIVEL)	\$4.00
104822	½" TUBE UNION	\$4.92
104823	5/8" TUBE UNION	\$7.00
104824	¼" FNPT X 3/8" TUBE X 3/8" TUBE TEE (NON SWIVEL)	\$8.08
104914	1/8" MNPT X ¼" TUBE, ELBOW 45° (SWIVEL)	\$3.25
105176	1/8" FNPT X ¼" TUBE, ELBOW 90° (SWIVEL)	\$3.08
105178	¾" MNPT X 3/8" TUBE, ELBOW 90° (SWIVEL)	\$6.33
105179	¾" MNPT X 3/8" TUBE, STRAIGHT	\$4.92
105180	¼" FNPT X 3/8" TUBE, STRAIGHT	\$4.08
105181	¾" MNPT X 5/8" TUBE, ELBOW 90° (SWIVEL)	\$8.08
105589	¾" MNPT X ¾" TUBE, ELBOW 45° (SWIVEL)	\$9.58
105590	¾" MNPT X ¾" TUBE, ELBOW 90° (SWIVEL)	\$9.08
106262	1/8" MNPT X ¼" TUBE X ¼" TUBE TEE (SWIVEL)	\$4.92



Control Rods

Suggested List

YOKES, ENDS, & CONNECTIONS		
103449	Yoke with Clevis and Cotter Pin	\$8.33
103450	Bent Yoke with Clevis and Cotter Pin	\$14.00
100916	Ball Joint, 1/4-20 Threads	\$6.25
105381	Offset Yoke 53/64 with Clevis and Cotter Pin	\$10.00
106672	Bent Yoke .875 with 1/2-20 thread	\$18.78
103405	Jam Nut, 1/2-20 Hex	\$0.17
104657	Machined Rod End with 1/2" Threads	\$8.25

THREADED ROD ONLY - 1/2-20 THREADS BOTH ENDS		
PR0400	ROD CONTROL ALL THRD 4.00" LONG	\$10.83
PR0500	ROD CONTROL ALL THRD 5.00" LONG	\$10.83
PR0600	ROD CONTROL PAINTED 6.00 LG	\$10.83
PR0700	ROD CONTROL PAINTED 7.00 LG	\$13.33
PR0800	ROD CONTROL PAINTED 8.00 LG	\$13.33
PR0900	ROD CONTROL PAINTED 9.00 LG	\$13.33
PR1000	ROD CONTROL PAINTED 10.00 LG	\$13.33
PR1100	ROD CONTROL PAINTED 11.00 LG	\$13.33
PR1200	ROD CONTROL PAINTED 12.00 LG	\$13.33
PR1300	ROD CONTROL PAINTED 13.00 LG	\$13.75
PR1400	ROD CONTROL PAINTED 14.00 LG	\$13.75
PR1500	ROD CONTROL PAINTED 15.00 LG	\$13.75
PR1600	ROD CONTROL PAINTED 16.00 LG	\$13.75
PR1700	ROD CONTROL PAINTED 17.00 LG	\$13.75
PR1800	ROD CONTROL PAINTED 18.00 LG	\$13.75
PR1900	ROD CONTROL PAINTED 19.00 LG	\$14.17
PR2000	ROD CONTROL PAINTED 20.00 LG	\$14.17
PR2100	ROD CONTROL PAINTED 21.00 LG	\$14.17
PR2200	ROD CONTROL PAINTED 22.00 LG	\$14.17
PR2300	ROD CONTROL PAINTED 23.00 LG	\$14.17
PR2400	ROD CONTROL PAINTED 24.00 LG	\$14.17
PR2500	ROD CONTROL PAINTED 25.00 LG	\$14.58
PR2600	ROD CONTROL PAINTED 26.00 LG	\$14.58
PR2700	ROD CONTROL PAINTED 27.00 LG	\$14.58
PR2800	ROD CONTROL PAINTED 28.00 LG	\$14.58
PR2900	ROD CONTROL PAINTED 29.00 LG	\$14.58
PR3000	ROD CONTROL PAINTED 30.00 LG	\$14.58
PR3100	ROD CONTROL PAINTED 31.00 LG	\$15.00
PR3200	ROD CONTROL PAINTED 32.00 LG	\$15.00
PR3300	ROD CONTROL PAINTED 33.00 LG	\$15.00

NOTE: Threaded control rods are also available in 1/2" increments. (PR2450=24.50" Rod)



Control Rods (continued)

Suggested List

THREADED ROD ONLY - 1/2-20 THREADS BOTH ENDS		
PR3400	ROD CONTROL PAINTED 34.00 LG	\$15.00
PR3500	ROD CONTROL PAINTED 35.00 LG	\$15.00
PR3600	ROD CONTROL PAINTED 36.00 LG	\$15.00
PR3700	ROD CONTROL PAINTED 37.00 LG	\$15.42
PR3800	ROD CONTROL PAINTED 38.00 LG	\$15.42
PR3900	ROD CONTROL PAINTED 39.00 LG	\$15.42
PR4000	ROD CONTROL PAINTED 40.00 LG	\$15.42
PR4100	ROD CONTROL PAINTED 41.00 LG	\$15.42
PR4200	ROD CONTROL PAINTED 42.00 LG.	\$15.42
PR4300	ROD CONTROL PAINTED 43.00 LG	\$15.83
PR4400	ROD CONTROL PAINTED 44.00 LG	\$15.83
PR4500	ROD CONTROL PAINTED 45.00 LG	\$15.83
PR4600	ROD CONTROL PAINTED 46.00 LG	\$15.83
PR4700	ROD CONTROL PAINTED 47.00 LG	\$15.83
PR4800	ROD CONTROL PAINTED 48.00 LG	\$15.83
PR4900	ROD CONTROL PAINTED 49.00 LG	\$16.25
PR5000	ROD CONTROL PAINTED 50.00 LG	\$16.25
PR5100	ROD CONTROL PAINTED 51.00 LG	\$16.25
PR5200	ROD CONTROL PAINTED 52.00 LG	\$16.25
PR5400	ROD CONTROL PAINTED 54.00 LG	\$16.25
PR5500	ROD CONTROL PAINTED 55.00 LG	\$16.25
PR6000	ROD CONTROL PAINTED 60.00 LG	\$16.67

NOTE: Threaded control rods are also available in 1/2" increments. (PR3650=36.50" Rod)



Tubing, Labels & Miscellaneous

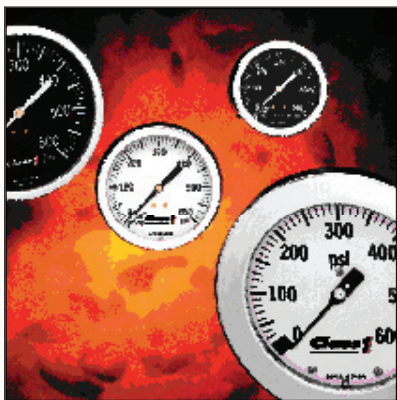
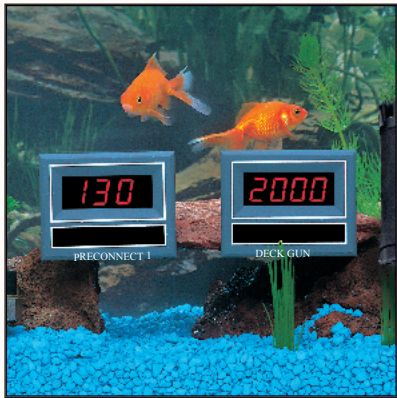
Suggested List

Air Brake Tubing		price per ft
104938	¼" Black (1,000' roll)	\$0.28
104939	¼" Red (1,000' roll)	\$0.28
104940	¼" Green (1,000' roll)	\$0.28
104941	¼" Orange (1,000' roll)	\$0.28
104942	¼" Blue (1,000' roll)	\$0.50
104943	3/8" Black (1,000' roll)	\$0.58
104944	3/8" Red (1,000' roll)	\$0.58
104945	3/8" Green (1,000' roll)	\$0.58
104946	3/8" Orange (1,000' roll)	\$0.58
104947	3/8" Blue (1,000' roll)	\$0.58
104948	½" Black (500' roll)	\$0.73
104949	½" Red (500' roll)	\$0.73
104950	½" Green (500' roll)	\$0.73
104951	½" Orange (500' roll)	\$0.73
104952	½" Blue (500' roll)	\$0.73
104953	5/8" Black (250' roll)	\$1.42
104954	5/8" Red (250' roll)	\$1.42
104955	5/8" Green (250' roll)	\$1.42
104956	5/8" Orange (250' roll)	\$1.42
104957	5/8" Blue (250' roll)	\$1.42
104958	¾" Black (250' roll)	\$1.75

(Please order in full rolls only)

Corner Tags, Chrome Bezels		
106022	4 Pack Corner Tags - Green	\$5.00
106023	4 Pack Corner Tags - Blue	\$5.00
106024	4 Pack Corner Tags - Pink	\$5.00
106025	4 Pack Corner Tags - Brown	\$5.00
106026	4 Pack Corner Tags - Silver	\$5.00
106027	4 Pack Corner Tags - Rust	\$5.00
106028	4 Pack Corner Tags - Orange	\$5.00
106029	4 Pack Corner Tags - Red	\$5.00
106030	4 Pack Corner Tags - Black	\$5.00
106664	4 Pack Corner Tags - Yellow	\$5.00
106665	4 Pack Corner Tags - White	\$5.00
106666	4 Pack Corner Tags - Purple	\$5.00
106667	4 Pack Corner Tags - Burgundy	\$5.00
106668	4 Pack Corner Tags - Gray	\$5.00
106669	4 Pack Corner Tags - Beige	\$5.00
106670	4 Pack Corner Tags - Line	\$5.00
106671	4 Pack Corner Tags - Light Blue	\$5.00

Pricing and Availability subject to change without notice. Price Effective Date: 06/01/04
All rights reserved, Copyright Class 1®



Gauges

Flowmeters

Electronic Controls

Plumbing Components



Class1, Inc.

607 NW 27th Avenue - Ocala, FL 34475 USA

Phone: 800-533-3569 • 352- 629-5020

Fax: 800-520-3473 • 352-629-2902

<http://www.class1.com>

email: class1@idexcorp.com

Copyright 2004, All Rights Reserved

Pricing and Availability Subject to change without notice

Effective Date 06-01-04