

**CUSTOMER ORDER SPECIFICATION FOR HALE RSD FIRE PUMP**

Customer Name: \_\_\_\_\_ Customer P.O. NO.: \_\_\_\_\_  
 Order Prepared By: \_\_\_\_\_ Hale Customer NO.: \_\_\_\_\_ Date: \_\_\_\_\_  
 Requested Delivery Date: \_\_\_\_\_  
 Fire Dept. Name: \_\_\_\_\_ City: \_\_\_\_\_ State: \_\_\_\_\_  
 Max. Elevation for Pump Test: \_\_\_\_\_ FT Panel Width: \_\_\_\_\_ IN.  
 Reference Specifications: \_\_\_\_\_  
 Engine: Mfr: \_\_\_\_\_ Model: \_\_\_\_\_ Horsepower: \_\_\_\_\_ @ \_\_\_\_\_ RPM  
 Full Load Governed RMP: \_\_\_\_\_ Peak Torque: \_\_\_\_\_ LB/FT @ \_\_\_\_\_ RPM  
 Application Confirmed With : \_\_\_\_\_  
 Truck Transmission: \_\_\_\_\_ Manufacturer: \_\_\_\_\_ Model: \_\_\_\_\_  
 PTO: Model \_\_\_\_\_, % \_\_\_\_\_, Torque Rating \_\_\_\_\_, Rotation: \_\_\_\_\_

**1. Pump Model (Circle Price of Model Desired):**

FLOW GPM (LPM)	750 (3000)	1000 (4000)	1250 (5000)	1500* (6000)	Material
PUMP MODEL (METRIC)	75 (300M)	100 (400M)	125 (500M0)	150 (600M)	
RSD	\$8,320	\$8,320	\$8,320	\$8,798	Cast Iron
RSD	CONTACT FACTORY				Bronze

\*Available in engine rotation only

**1A. Pump Light Kit Option (Check Applicable Box(es)):**

- NFPA Midship Light Kit \$156
- No Light Kit N/C

**1B. Pump Manual Option (Check Applicable Box(es)):**

- Paper Manual version \$36
- CD Version (2) N/C

**1C. Panel Placard Option (Check Applicable Box(es)):**

- Stamped S/N Placard \$29
- No Panel Placard N/C

**2. NFPA Rating: Options Available**

- None N/C
- Provided \$200
- Dual Rating (US GPM/LPM) \$290

**3. Pump Ratio (Circle desired ratio):** N/C

RATIO	DESIGNATION
1.29	-12
1.40	-14
1.59	-15
1.81	-18
1.97	-20
2.16	-21
2.37	-23

**4.**

- Keyed input shaft N/C
- Drive flange for 1410, 1510, 1610 \$960

**5. Gearbox Position**

GEARBOX POSITION	
VERTICAL	N/C
HORIZONTAL (LH)	100
HORIZONTAL (RH)	100

**6. Tachometer Drive Option**

- No Cable or Panel Adapter N/C
- Panel Adapter Only \$345
- Cable and Panel Adapter \$550

**7. Pump Rotation (Check one Box)**

- Engine Rotation N/C
- Opposite Engine Rotation N/C  
(not available in 1500 GPM)

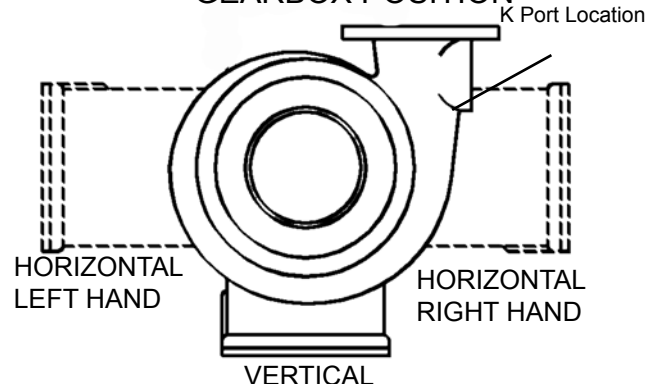
**8. Suction Ends (Check One Box):**

- 6" VICTAULIC STD \$495
- Hale metric bolt Flange \$962
- 5" NST Short \$962
- 5" NST Long \$962
- 6" NST Short \$962
- 6" NST Long \$962
- 6" NST w/115 Flange \$962
- Rams Horn Weld Suction Tee \$900
- 6" NST Suction Manifold w/MIV E consult factory

**9. Volute Side Discharge (Check One Box):**

CONNECTION K	Cast Iron
BLANK/OPEN	12
2-1/2 INCH NPT	60
3 INCH NPT	94
TRV w/115 Flange	416
TRV-L w/115 Flange	678
Magnesium Anode w/115 Flange	170
Zinc Anode w/115 Flange	112

**GEARBOX POSITION**



**10. Volute Position** (Circle Position Desired):

- Vertical Position (1 or 21) N/C
- Other Postions \$100

ENGINE ROTATION  
POSSIBLE CASE  
POSITIONS (30°  
INCREMENTS

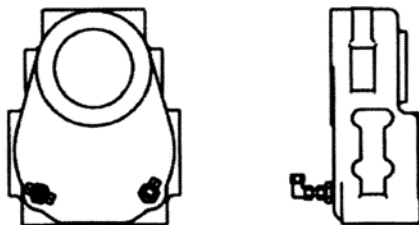
OPPOSITE ENGINE  
ROTATION  
POSSIBLE CASE  
POSITIONS (30°  
INCREMENTS

ENGINE ROTATION POSSIBLE CASE POSITIONS (30° INCREMENTS	0°				90°			
	180°				270°			
OPPOSITE ENGINE ROTATION POSSIBLE CASE POSITIONS (30° INCREMENTS	0°				90°			
	180°				270°			

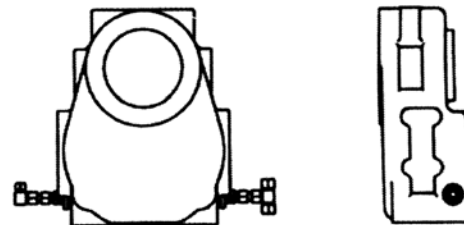
**11. Cooler Type**

- Stanard U-Tube N/C
- Alternative Straight N/C

STANDARD (U-TUBE)



ALTERNATE (STRAIGHT)



THE FOLLOWING GEARBOX AND VOLUTE POSITION COMBINATIONS REQUIRE THE ALTERNATE COOLER (STRAIGHT TUBE). ALL OTHERS MUST USE THE STANDARD COOLER (U-TUBE):

- Vertical Gearbox: 7, 8, 9, 10, 15, 17, 18, 19
- Horizontal Left Gearbox: 1, 10, 11, 12, 19, 20, 21, 22
- Horizontal Right Gearbox: 4, 5, 6, 7, 13, 14, 15, 16

**FOR ADDITIONAL OR LOOSE ACCESSORIES, VALVES, FLANGES, SEE SEPARATE ACCESSORY PAGE PRICE LIST AND ATTACH TO PUMP ORDER**

**12. Discharge** (Circle Position Desired):

- Open N/C
- Manifold (with Blanks) \$1100.00

**13. Pro Tech Warranty (FIRE SERVICE APPLICATIONS ONLY) (NET PRICE, NO DISCOUNTS)**

- Standard 5 Year Warranty (Parts and Labor for the first two years, parts only years 3-5) N/C
- Pro Tech Extended Warranty - 1 Additional Year of Labor \$250
- Pro Tech Extended Warranty - 2 Additional Years of Labor \$750
- Pro Tech Extended Warranty - 3 Additional Years of Labor \$1500



Hale Products, Inc. A Unit of IDEX Corp. 700 Spring Mill Avenue Conshohocken, PA 19428 USA  
TEL: 610/825-6300 1-800/220-HALE FAX: 610/825-9615 www.haleproducts.com

Class 1 A Unit of IDEX Corp. 607 NW 27th Avenue Ocala FL 34475 USA  
Tel: 352-629-5020 800-533-3569 Fax: 352-629-2902 www.class1.com