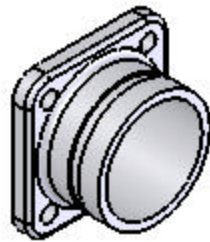


SIZE	PART NUMBER
1"	N/A
1 1/2"	104302
2"	104302
2 1/2"	104209
3"	104210
4"	N/A

- WELD FLANGE
- VIC CAPABLE



SIZE	PART NUMBER
1"	N/A
1 1/2"	105810
2"	105810
2 1/2"	105326
3"	105811
4"	N/A

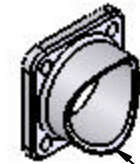
- VICTAULIC
- WELD CAPABLE

- COPED WELD

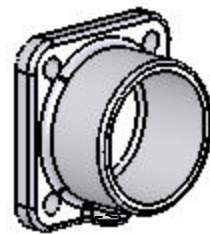
SIZE	PART NUMBER	HEIGHT	COPE
3"	105289	2.25"	4"
3"	109972	2.38"	6"



109972



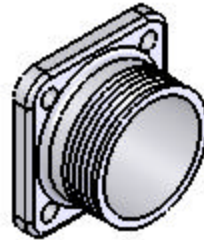
105289



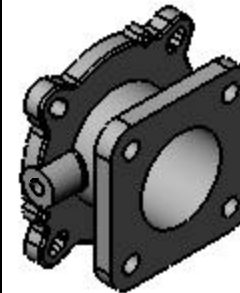
SIZE	PART NUMBER
2"	109816

- FLANGE WELD PUMP  
115-3" BLANK

- 115 FLANGE TO MNPT



SIZE	PART NUMBER
2"	110616
2 1/2"	110076
3"	110489

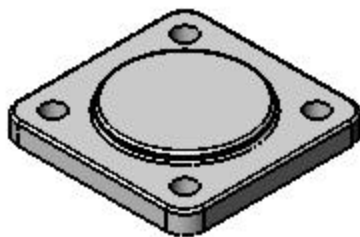


- 115 PUMP FLANGE TO  
3" HALE/AKRON FLANGE

SIZE	PART NUMBER
2 1/2"	109872

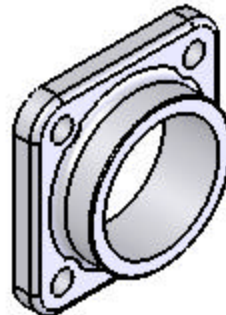
PART NUMBER  
110574

- 115 FLANGE BLANK



PART NUMBER  
111892

- COUPLING 2 1/2" NPTF  
WELD TO 115 FLANGE



- PLUG, BRASS 1/8" NPT  
PART NUMBER: 102669



- PLUG, BRASS 1/4" NPT  
PART NUMBER: 217-0201-00-0



- GREASE ZERK  
PART NUMBER: 082-2007-00-0

**Class1**

607 N.W. 27th AVE.  
Ocala, Florida 34475  
Phone 352-629-5020  
FAX 352-629-2902

CODE	IDENT. NO.	DRAWN BY	COMPLETED	CHECKED	APPROVED
06CG4		MEH	10/01/04	----	----
SIZE	DRAWING NUMBER				SCALE
C	304 PUMP FLANGES SATINLESS STEEL				1:1
					SHEET 1 OF 1