

PART NUMBER
110119



- (1) 3" VIC
- (1) 3" WELD
- (1) 2" PAD OPEN
- (1) 2.5" CLOSED PAD

PART NUMBER
110116



- 3" VIC X 3" X 3" SWEEP "T"
- (1) 3" VIC
- (1) 3" OPEN PAD
- (1) 3" CLOSED PAD

PART NUMBER
112079



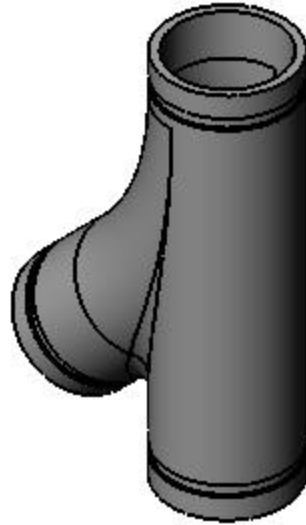
- 3" VALVE X 3" 115 FLANGE W/ 1" NPT AIR INJECTION

PART NUMBER
110112



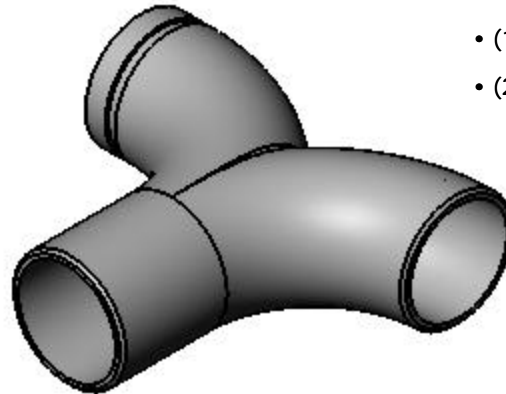
- CROSS FOAM 3" VIC X 115 FLANGE
- (1) 2 1/2" CLOSED PAD
- (1) 2" OPEN PAD
- (1) 3" VIC

PART NUMBER
110111



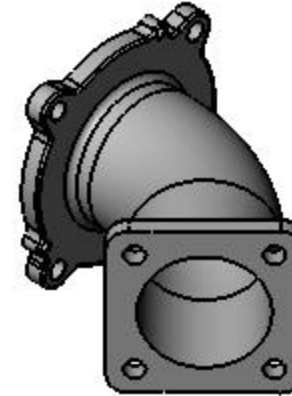
- FITTING "Y" BRANCH 3" VIC - VIC - VIC
- (3) VIC

PART NUMBER
110115



- 3" X 3" RAMS HORNS "T"
- (1) 3" VIC
- (2) 3" WELD

PART NUMBER
110118



- 3" VALVE
- 3" 115 FLANGE
- 45° ELBOW

- ROLL PIN S/S 1/4" X 3/4" PART NUMBER: 110490



- GREASE ZERK PART NUMBER: 082-2007-00-0



- PLUG, BRASS 1/8" NPT PART NUMBER: 102669



- PLUG, BRASS 3/4" NPT PART NUMBER: 217-0501-01-0



Class1

607 N.W. 27th AVE.
Ocala, Florida 34475
Phone 352-629-5020
FAX 352-629-2902

CODE 06CG4	IDENT. NO.	DRAWN BY MFH	COMPLETED 09/23/04	CHECKED -----	APPROVED -----
SIZE C	DRAWING NUMBER CAFS SALES				SCALE 1:1 SHEET 1 OF 1