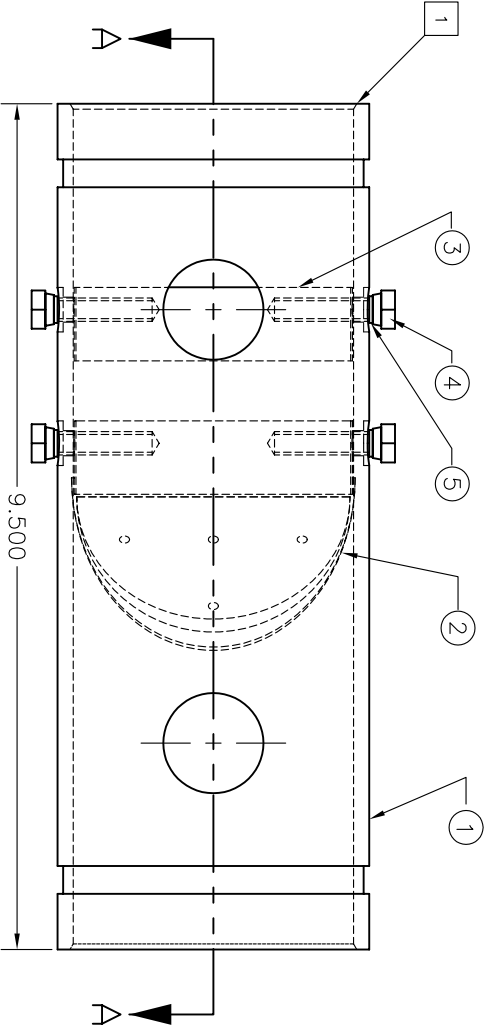


SECTION A-A



- ASSEMBLY INSTRUCTIONS:
1. APPLY SILICONE TO THE INSIDE OF THE VALVE SIDE END OF THE PIPE AND APPLY TO THE SEAL OF THE CHECK VALVE.
 2. INSERT CHECK VALVE INTO THE PIPE, AND MAKE SURE TO AVOID SHEARING RUBBER DURING INSTALLATION. ALIGN WITH HOLES AND SCREW IN PLACE.
 3. INSTALL ITEM 3 AND SCREW INTO PLACE USING ITEM 4 & 5.

ITEM	QTY	P.N.	DESCRIPTION
1	1	109540	PIPE SINGLE CHECK MANIFOLD
2	1	107005	CHECK VALVE 3" ASSEMBLY
3	1	106997	LEADING EDGE VALVE CHECK 3"
4	2	107884	1/4-20 X .500" HEX SCREW
5	2	107885	SEAL COLLAR 1/4" SCREW
6	NR	103142	SILICONE DOW CORNING #7 COMP.
7	1	108448	SADDLE CLAMP FOR PADDLE WHEEL
8	1	4844010	MANIFOLD

CLASST A unit of **DEX** 807 N.W. 27th Ave. Pompano Beach, FL 33062
 877-636-6363 FAX 305-858-2882

MANIFOLD 3" CAF'S WITH SINGLE CHECK AND INJECTOR PORT VIC/VIC ASSY

DATE DESIGNED: 04/22/03
 DATE CHECKED: 04/22/03
 DRAWING NUMBER: 108893

SIZE: B
 SCALE: NONE

MANUFACTURED BY: CLASST
 CHECKED BY: [Signature]
 PROJECT: [Signature]

REV	ECR	BY	DATE	DESCRIPTION
1				