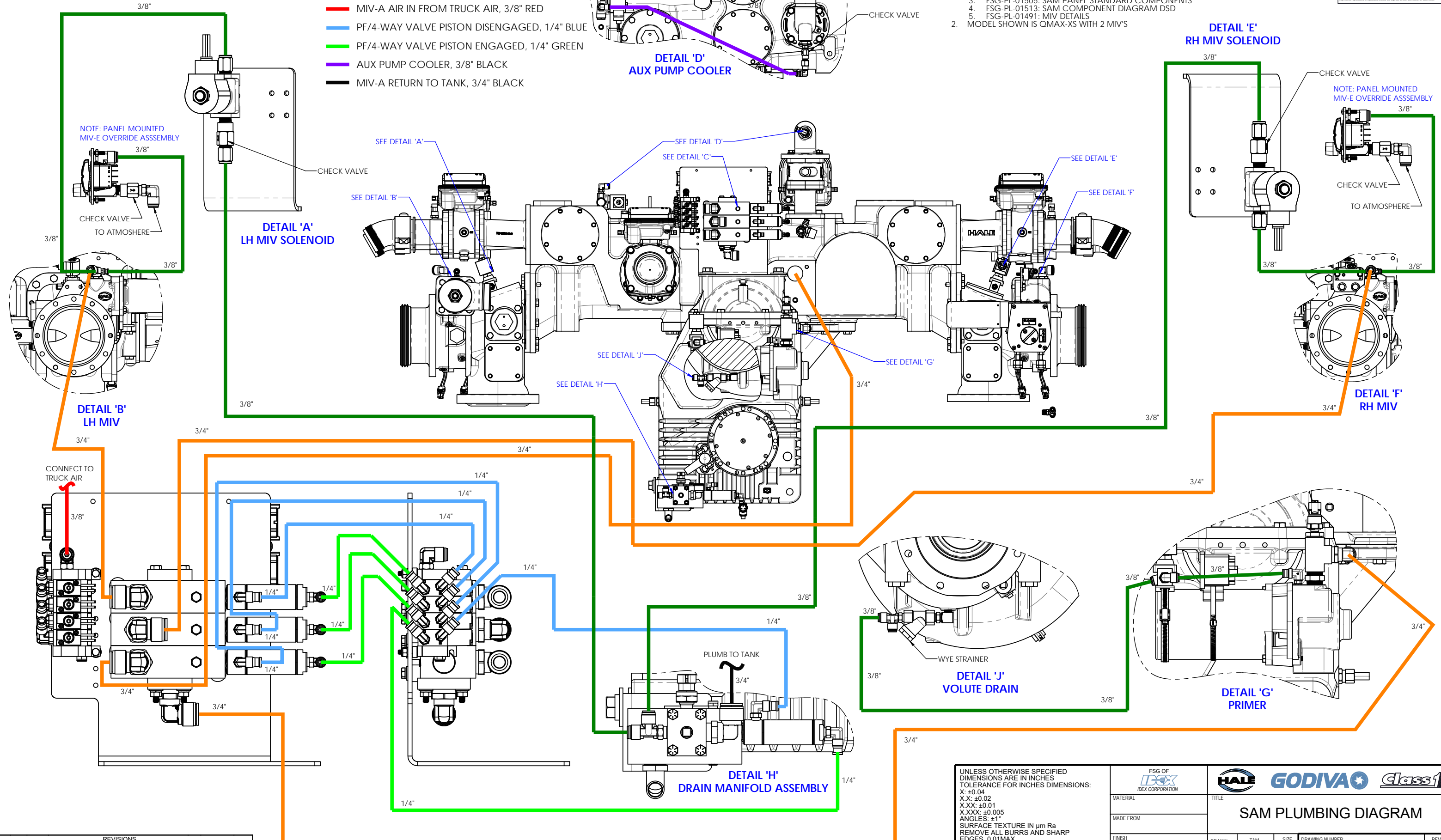
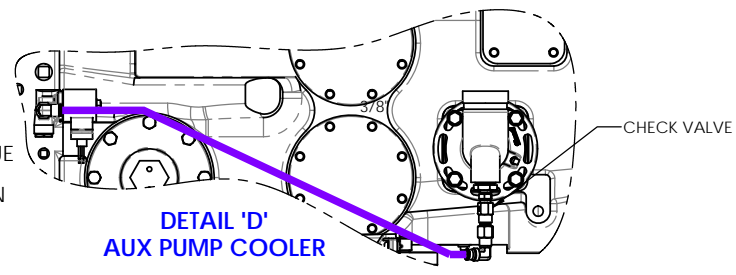


COMPLIANCE NOTICE  
 © 2022 IDEX. These items are controlled by the U.S. Government and authorized for export only to the country of ultimate destination for use by the ultimate consignee or end-user's name. This may not be re-exported, transferred, or otherwise disposed of to any other country or to any person or entity in that country without the approval of the U.S. State Department. Other than as authorized, these items are controlled under the U.S. Export Administration Regulations (EAR) and are subject to the EAR. These drawings are controlled and copy without the individual property of IDEX and its subsidiaries, and they are not to be reproduced or transmitted in any form or by any means without the prior written permission of IDEX.

- NOTES:  
 1. FOR ADDITIONAL DETAILS, REFER TO:  
 1. FSG-PL-01501: SAM COMPONENT DIAGRAM QMAX-XS  
 2. FSG-PL-01502: SAM COMPONENT DIAGRAM QMAX  
 3. FSG-PL-01505: SAM PANEL STANDARD COMPONENTS  
 4. FSG-PL-01513: SAM COMPONENT DIAGRAM DSD  
 5. FSG-PL-01491: MIV DETAILS  
 2. MODEL SHOWN IS QMAX-XS WITH 2 MIV'S



- MIV-A AIR BLEED, 3/8" BLACK
- MIV-A PRIME, 3/4" BLACK
- MIV-A AIR IN FROM TRUCK AIR, 3/8" RED
- PF/4-WAY VALVE PISTON DISENGAGED, 1/4" BLUE
- PF/4-WAY VALVE PISTON ENGAGED, 1/4" GREEN
- AUX PUMP COOLER, 3/8" BLACK
- MIV-A RETURN TO TANK, 3/4" BLACK



REVISIONS				
ECN	REV.	ZONE	BY	DATE
	A		TAM	15APR2020
5927	B		TAM	26OCT2022

UNLESS OTHERWISE SPECIFIED  
 DIMENSIONS ARE IN INCHES  
 TOLERANCE FOR INCHES DIMENSIONS:  
 X: ±0.04  
 X.X: ±0.02  
 X.XX: ±0.01  
 X.XXX: ±0.005  
 ANGLES: ±1°  
 SURFACE TEXTURE IN µm Ra  
 REMOVE ALL BURRS AND SHARP  
 EDGES, 0.01MAX

COPYRIGHT ©  
 NOT TO BE REPRODUCED OR USED TO  
 MAKE OTHER DRAWINGS OR MACHINERY

			
MATERIAL		TITLE	
MADE FROM		SAM PLUMBING DIAGRAM	
FINISH		DRAWN	TAM
PROJECT		APPROVED	KTN
		DATE	08APR2020
		SIZE	D
		DRAWING NUMBER	FSG-PL-01514
		SCALE	1:5
		REV	B
		SHEET	1 OF 1