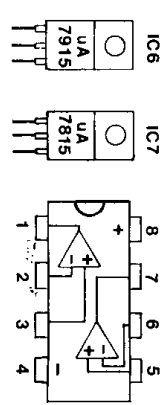


NOTES:

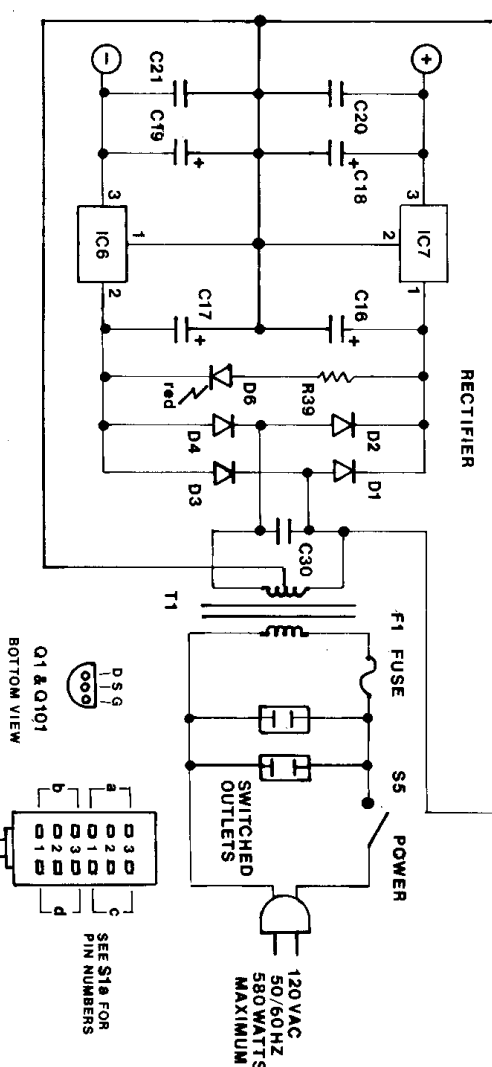
- 1 - Left channel shown. Right channel part numbers add 100.
- 2 - S2 shown depressed / TUNER selected.



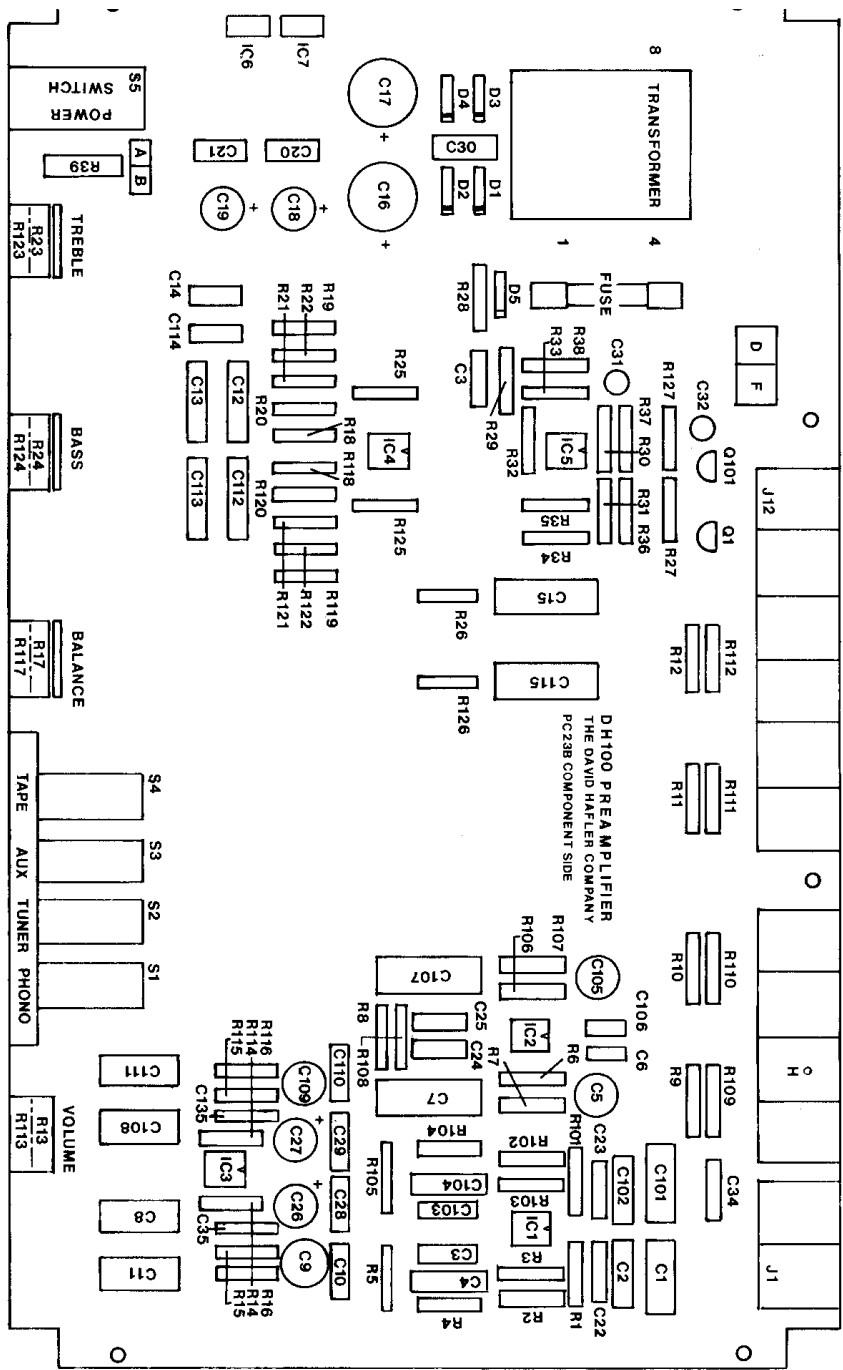
PREAMPLIFIER DH100

SCHEMATIC DIAGRAM PC23B

SERIES 2



(The following resistors are metal film, 1/4W, 1% unless noted)



H100 COMPONENT LIST

Part No.	Part No.	Part No.
101	Capacitor, polycarbonate.	1.0 MFD/100V
102	Capacitor, polypropylene.	120 pFD/160V
103	Capacitor, polypropylene.	0.027 MFD/160V
104	Capacitor, polypropylene.	0.08 MFD/160V
105	Capacitor, electrolytic, NP.	220 MFD/160V
106	Capacitor, polypropylene.	0.033 MFD/160V
107	Capacitor, polypropylene.	2.2 MFD/100V
108	Capacitor, polycarbonate.	1.0 MFD/100V
109	Capacitor, electrolytic, NP.	220 MFD/10V
1,110	Capacitor, polypropylene.	0.033 MFD/160V
1,111	Capacitor, polycarbonate.	1.0 MFD/100V
2,112	Capacitor, polypropylene.	0.1 MFD/1%/160V
3,113	Capacitor, polypropylene.	0.1 MFD/1%/160V
4,114	Capacitor, polypropylene.	0.01 MFD/1%/160V
5,115	Capacitor, polypropylene.	2.2 MFD/100V
3,117	Capacitor, electrolytic.	1000 MFD/50V
3,119	Capacitor, electrolytic.	470 MFD/25V
2,21	Capacitor, polypropylene.	0.033 MFD/160V

Part No.	Part No.	Part No.
J1-J12	Jack, RCA phono type, single circuit	QP015
Q1,101	J112 muting FET	QN131
R1,101	47.5 K ohms	RM036
R2,102	12.1 K ohms	RM057
R3,103	316 ohms	RM015
R4,104	28.0 K ohms	RM053
R5,105	3.92 K ohms	RM054
R6,106	12.1 K ohms	RM057
R7,107	1.10 K ohms	RM025
R8-R11	1 megohm	RM044
R108-		
R111	1 megohm	RM044
R12,112	150 ohms	RM013
R13,113	Potentiometer, VOLUME,	
	2 X 50K audio taper	RP025
R14,114	274 K ohms	RM055
R15,115	10.0 K ohms	RM023
R16,116	1.10 K ohms	RM025
R17,117	Potentiometer, BALANCE,	
	2 X 50K linear taper	RP024
R18,118	22.1 K ohms	RM035
R19,119	4.75 K ohms	RM052
R20,120	1.10 K ohms	RM025
R21,121	1.10 K ohms	RM025
R22,122	4.75 K ohms	RM052
R23,123	Potentiometer, TREBLE,	
	2 X 25K, special taper	RP023
R24,124	Potentiometer, BASS,	
	2 X 25K, special taper	RP023
R25,125	22.1 K ohms	RM035
R26,126	150 ohms	RM015
R27,127	1000 ohms, carbon film, 5%	RC013
R28,29	470 K ohms, carbon film, 5%	RC044
R30	10 K ohms, carbon film, 5%	RC016
R31	39 K ohms, carbon film, 5%	RC038
R32	2.2 megohms, carbon film, 5%	RC028
R33	270 ohms, carbon film, 5%	RC029
R34,35	100 K ohms, carbon film, 5%	RC017
R36	4.7 K ohms, carbon film, 5%	RC042
R37	1.8 K ohms, carbon film, 5%	RC023
R38	390 K ohms, carbon film, 5%	RC057
R39	2.7 K ohms, carbon film, 1/2 Watt, 5%	RD124
S1-S4	Switch, Selector assembly, Non-shorting	SA117
S5	Switch, POWER, Push-push type, SPST	SL113
T1	Transformer, 120VAC Primary alternate 220VAC Primary	TA126
		TA127