

NOTE: INSTALLATION MUST CONFORM TO GOOD SHOP PRACTICES, SAE STANDARDS, RVIA STANDARDS, AND OTHER APPLICABLE STANDARDS.

LEVELING SYSTEM: AP55850

|     |          |               |
|-----|----------|---------------|
| 1   | 16FE.B16 | UPDATED HOSES |
| NO. | DATE     | REVISION      |

THE INFORMATION DISCLOSED ON THIS DRAWING IS CONFIDENTIAL AND MUST NOT BE DISCLOSED OR USED IN ANY MANNER WHICH WILL BE DETRIMENTAL TO THE HWH CORPORATION

|                         |               |  |                               |
|-------------------------|---------------|--|-------------------------------|
| <b>HWH</b>              |               | I-80 EXIT 267 SOUTH<br>RT 1 MOSCOW, IOWA 52760 |                               |
| SCALE: 1:6              | DATE: 06AUG15 | DRAWN BY: .                                    |                               |
| <b>HYD CONN DIAGRAM</b> |               |  |                               |
| <b>RENEGADE/KIBBI</b>   |               |  | DRAWING NUMBER<br>MP70905 A/C |

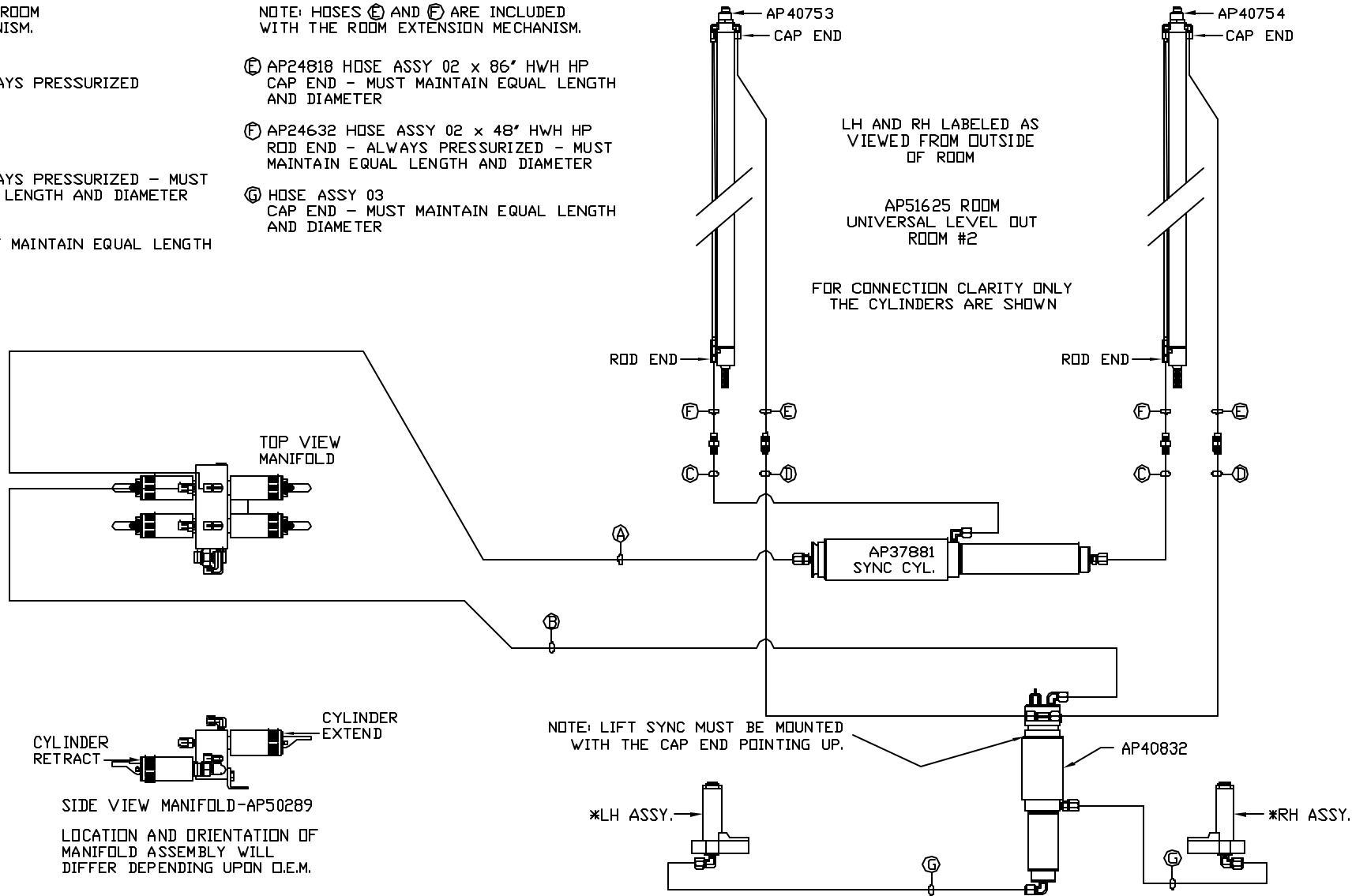


\*: PART OF THE ROOM  
EXTENSION MECHANISM.

- Ⓐ HOSE ASSY 04  
ROD END - ALWAYS PRESSURIZED
- Ⓑ HOSE ASSY 04  
CAP END
- Ⓒ HOSE ASSY 03  
ROD END - ALWAYS PRESSURIZED - MUST  
MAINTAIN EQUAL LENGTH AND DIAMETER
- Ⓓ HOSE ASSY 04  
CAP END - MUST MAINTAIN EQUAL LENGTH  
AND DIAMETER

NOTE: HOSES Ⓒ AND Ⓓ ARE INCLUDED  
WITH THE ROOM EXTENSION MECHANISM.

- Ⓔ AP24818 HOSE ASSY 02 x 86' HWH HP  
CAP END - MUST MAINTAIN EQUAL LENGTH  
AND DIAMETER
- Ⓕ AP24632 HOSE ASSY 02 x 48' HWH HP  
ROD END - ALWAYS PRESSURIZED - MUST  
MAINTAIN EQUAL LENGTH AND DIAMETER
- Ⓖ HOSE ASSY 03  
CAP END - MUST MAINTAIN EQUAL LENGTH  
AND DIAMETER



NOTE: INSTALLATION MUST CONFORM TO GOOD SHOP PRACTICES, SAE  
STANDARDS, RVIA STANDARDS, AND OTHER APPLICABLE STANDARDS.

MP70905 C/C  
08OCT15