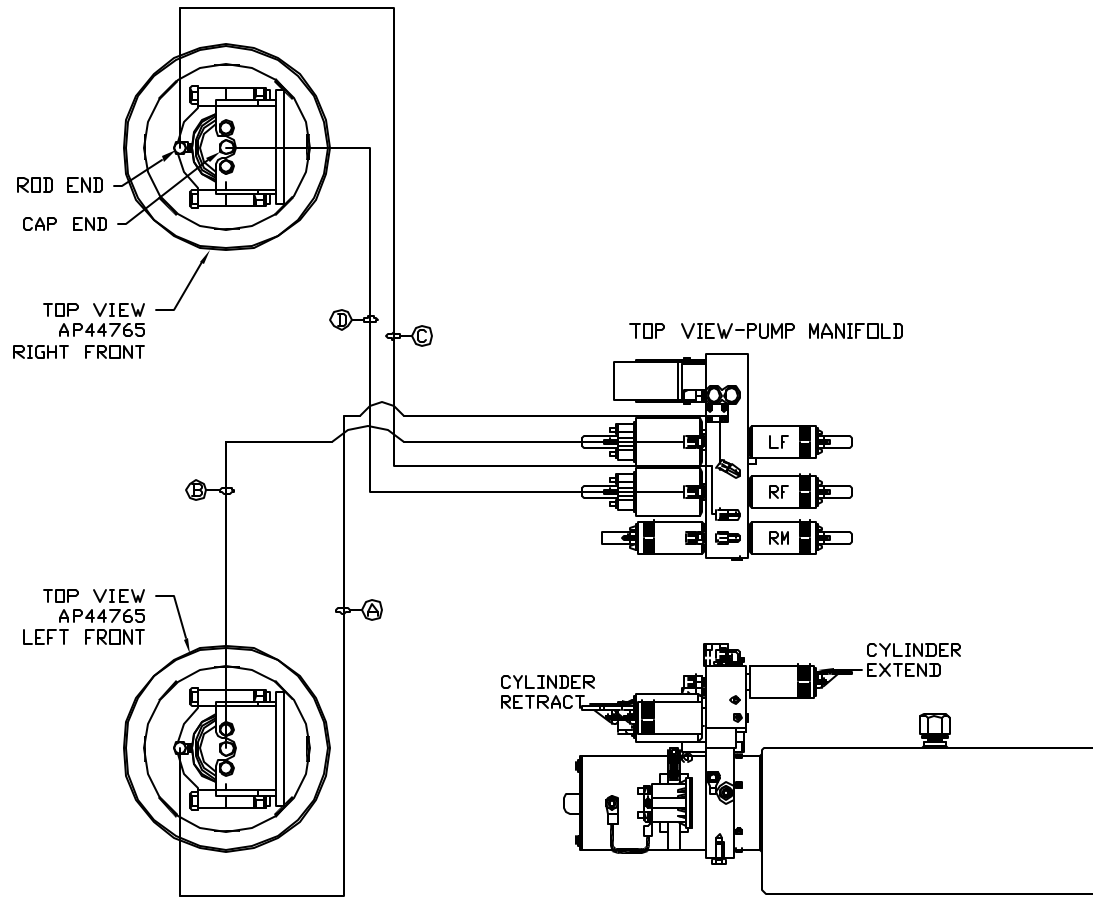


ORIENTATION  
 ← FRONT



- Ⓐ AP4827 HOSE ASSY 04 x 144'  
ROD END
- Ⓑ AP44283 HOSE ASSY .25/05 x 144'  
CAP END
- Ⓒ AP6116 HOSE ASSY 04 x 240'  
ROD END
- Ⓓ AP43717 HOSE ASSY .25/05 x 240'  
CAP END

SIDE VIEW PUMP/MANIFOLD-AP52035

LOCATION AND ORIENTATION OF  
 PUMP/MANIFOLD ASSEMBLY WILL  
 DIFFER DEPENDING UPON O.E.M.

		HWH		I-80 EXIT 267 SOUTH RT 1 MOSCOW, IOWA 52760	
		SCALE 1:6	DATE 15JAN15	DRAWN BY .	
		HYD CONN DIAGRAM			
NO.	DATE	REVISION			
		THE INFORMATION DISCLOSED ON THIS DRAWING IS CONFIDENTIAL AND MUST NOT BE DISCLOSED OR USED IN ANY MANNER WHICH WILL BE DETRIMENTAL TO THE HWH CORPORATION			DRAWING NUMBER MP70844 A/B

NOTE: INSTALLATION MUST CONFORM TO GOOD SHOP PRACTICES, SAE STANDARDS, RVIA STANDARDS, AND OTHER APPLICABLE STANDARDS.

CONTROL PACKAGE: AP54589

RENEGADE/KIBBI

\*: PART OF THE ROOM  
EXTENSION MECHANISM.

Ⓐ AP4164 HOSE ASSY 04 x 384"  
ROD END - ALWAYS PRESSURIZED

Ⓑ AP4164 HOSE ASSY 04 x 384"  
CAP END

Ⓒ AP50779 HOSE ASSY 03 x 144"  
ROD END - ALWAYS PRESSURIZED - MUST  
MAINTAIN EQUAL LENGTH AND DIAMETER

Ⓓ AP4827 HOSE ASSY 04 x 144"  
CAP END - MUST MAINTAIN EQUAL LENGTH  
AND DIAMETER

AP54591 HOSE KIT/1 ULD

NOTE: HOSES Ⓒ AND Ⓓ ARE INCLUDED  
WITH THE ROOM EXTENSION MECHANISM.

Ⓔ AP24818 HOSE ASSY HWH02HP x 86"  
CAP END - MUST MAINTAIN EQUAL LENGTH  
AND DIAMETER

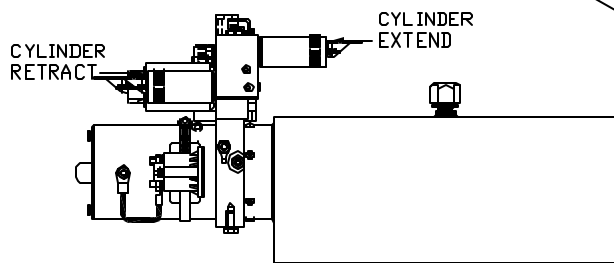
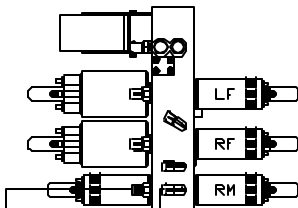
Ⓕ AP24632 HOSE ASSY HWH02HP x 48"  
ROD END - ALWAYS PRESSURIZED - MUST  
MAINTAIN EQUAL LENGTH AND DIAMETER

Ⓖ AP49245 HOSE ASSY 03 x 120"  
CAP END - MUST MAINTAIN EQUAL LENGTH  
AND DIAMETER

LH AND RH LABELED AS  
VIEWED FROM OUTSIDE  
OF ROOM

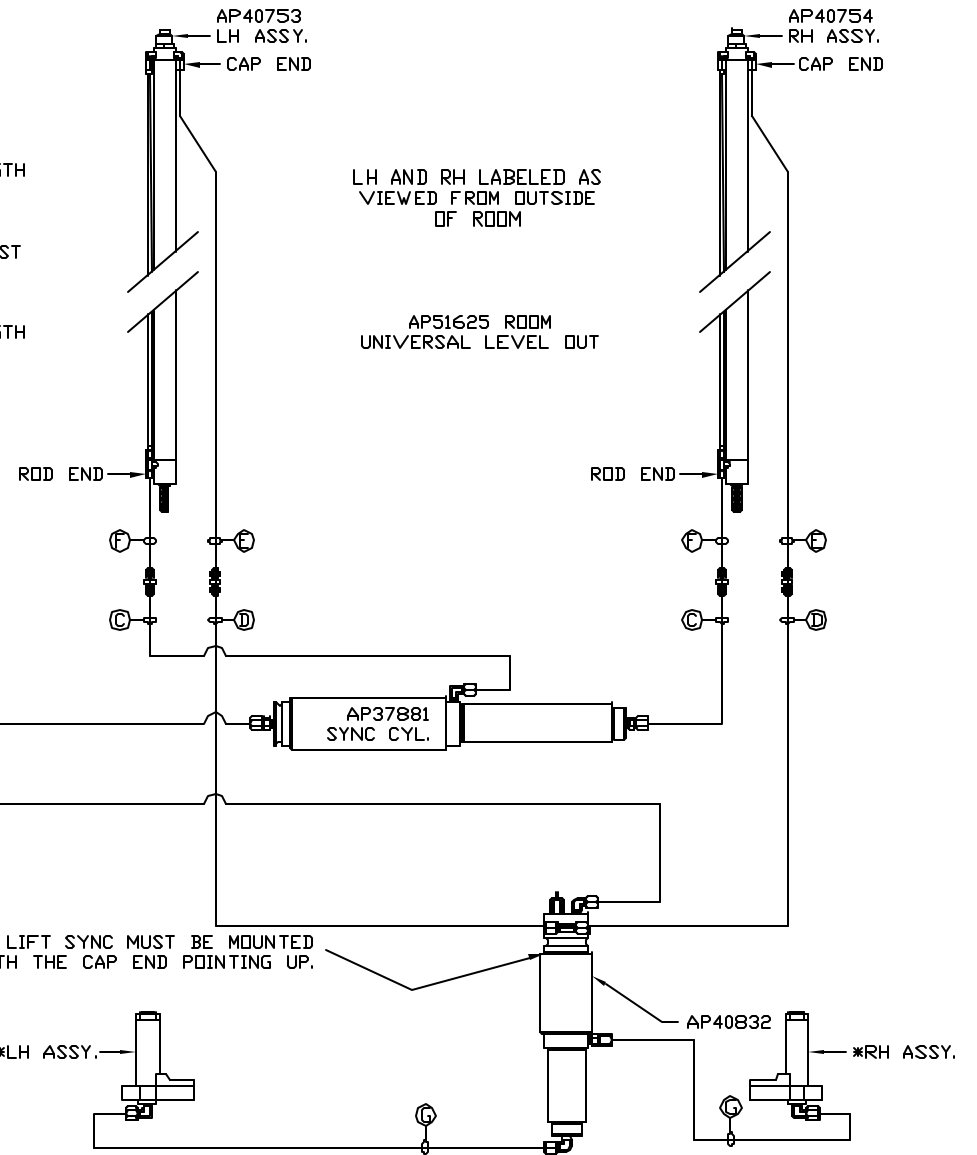
AP51625 ROOM  
UNIVERSAL LEVEL OUT

TOP VIEW-PUMP MANIFOLD



SIDE VIEW PUMP/MANIFOLD-AP52035

LOCATION AND ORIENTATION OF  
PUMP/MANIFOLD ASSEMBLY WILL  
DIFFER DEPENDING UPON O.E.M.



NOTE: INSTALLATION MUST CONFORM TO GOOD SHOP PRACTICES, SAE  
STANDARDS, RVIA STANDARDS, AND OTHER APPLICABLE STANDARDS.

MP70844 B/B  
15JAN15