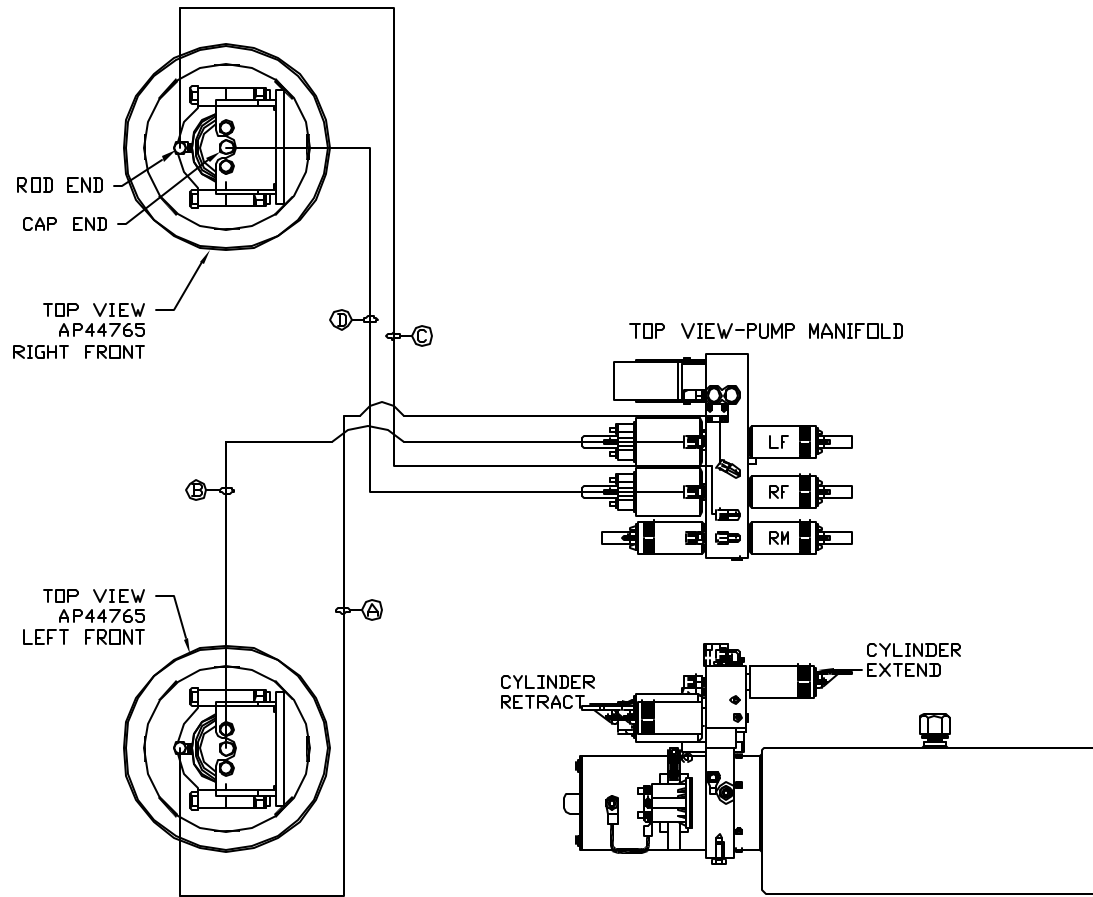


ORIENTATION  
 ← FRONT



- Ⓐ AP4161 HOSE ASSY .25" x 120'  
ROD END
- Ⓑ AP45250 HOSE ASSY .25/05 x 96'  
CAP END
- Ⓒ AP4061 HOSE ASSY .25" x 216'  
ROD END
- Ⓓ AP46310 HOSE ASSY .25/05 x 192'  
CAP END

SIDE VIEW PUMP/MANIFOLD-AP52035  
 LOCATION AND ORIENTATION OF  
 PUMP/MANIFOLD ASSEMBLY WILL  
 DIFFER DEPENDING UPON O.E.M.

NOTE: INSTALLATION MUST CONFORM TO GOOD SHOP PRACTICES, SAE STANDARDS, RVIA STANDARDS, AND OTHER APPLICABLE STANDARDS.

CONTROL PACKAGE: AP51907

		HWH		I-80 EXIT 267 SOUTH RT 1 MOSCOW, IOWA 52760	
		SCALE 1:6	DATE 09JUN14	DRAWN BY .	
△	07MAY15	CORRECTED TYPO			
NO.	DATE	REVISION			
HYD CONN DIAGRAM					
THE INFORMATION DISCLOSED ON THIS DRAWING IS CONFIDENTIAL AND MUST NOT BE DISCLOSED OR USED IN ANY MANNER WHICH WILL BE DETRIMENTAL TO THE HWH CORPORATION				DRAWING NUMBER	
RENEGADE/KIBBI				MP70686 A/B	

\*: PART OF THE ROOM  
EXTENSION MECHANISM.

Ⓐ AP6116 HOSE ASSY .25' x 240'  
ROD END - ALWAYS PRESSURIZED

Ⓑ AP6116 HOSE ASSY .25' x 240'  
CAP END

Ⓒ AP49417 HOSE ASSY 03 x 96'  
ROD END - ALWAYS PRESSURIZED - MUST  
MAINTAIN EQUAL LENGTH AND DIAMETER

Ⓓ AP1412 HOSE ASSY .25' x 84'  
CAP END - MUST MAINTAIN EQUAL LENGTH  
AND DIAMETER

AP51913 HOSE KIT/1 ULD

NOTE: HOSES Ⓒ AND Ⓓ ARE INCLUDED  
WITH THE ROOM EXTENSION MECHANISM.

Ⓔ AP24818 HOSE ASSY HWH02HP x 86'  
CAP END - MUST MAINTAIN EQUAL LENGTH  
AND DIAMETER

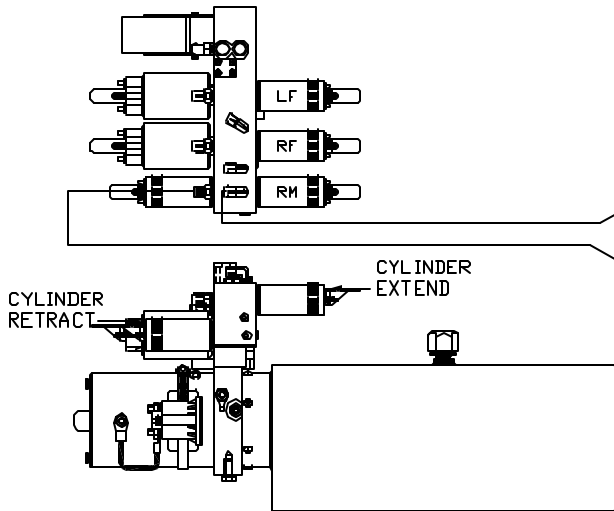
Ⓕ AP24632 HOSE ASSY HWH02HP x 48'  
ROD END - ALWAYS PRESSURIZED - MUST  
MAINTAIN EQUAL LENGTH AND DIAMETER

Ⓖ AP46693 HOSE ASSY 03 x 48'  
CAP END - MUST MAINTAIN EQUAL LENGTH  
AND DIAMETER

LH AND RH LABELED AS  
VIEWED FROM OUTSIDE  
OF ROOM

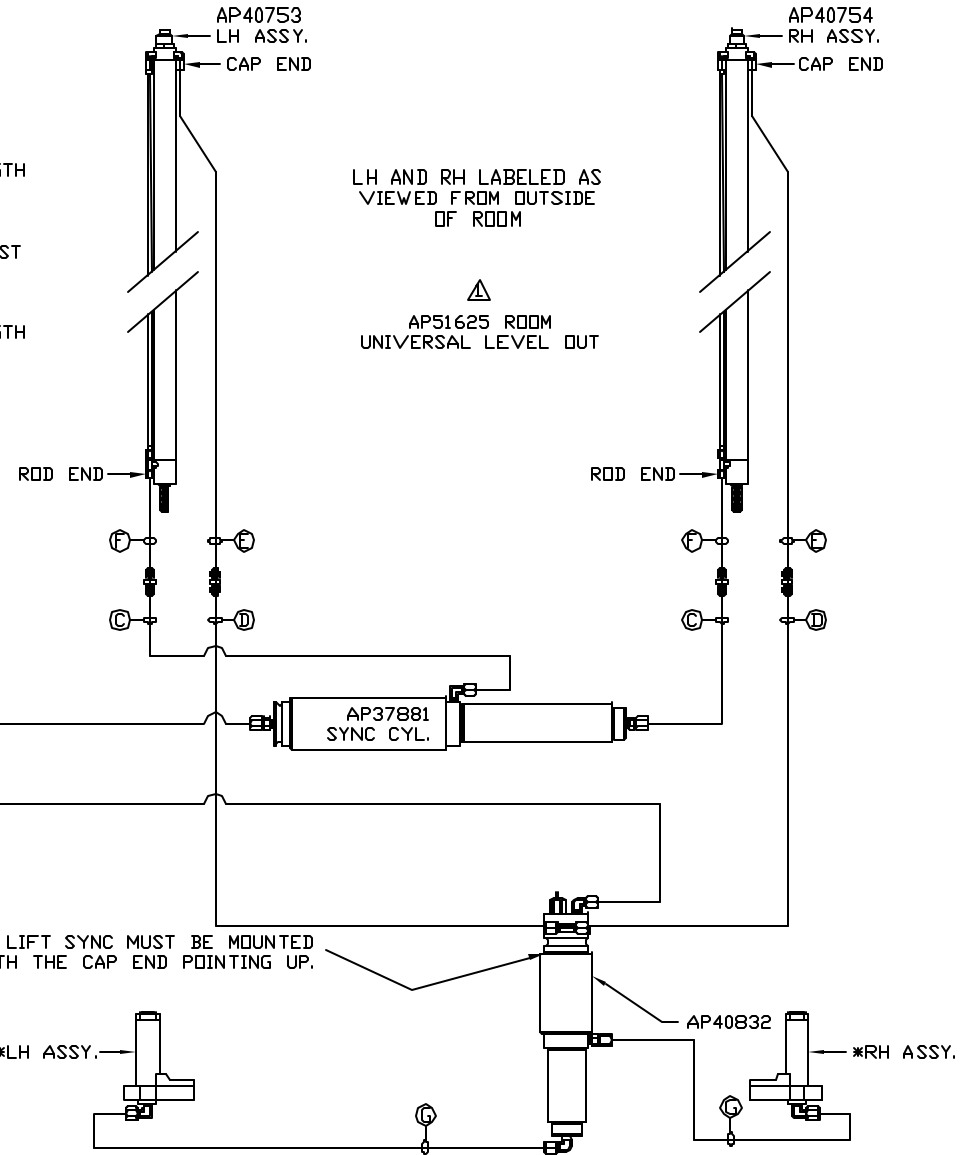
⚠  
AP51625 ROOM  
UNIVERSAL LEVEL OUT

TOP VIEW-PUMP MANIFOLD



SIDE VIEW PUMP/MANIFOLD-AP52035

LOCATION AND ORIENTATION OF  
PUMP/MANIFOLD ASSEMBLY WILL  
DIFFER DEPENDING UPON O.E.M.



NOTE: INSTALLATION MUST CONFORM TO GOOD SHOP PRACTICES, SAE  
STANDARDS, RVIA STANDARDS, AND OTHER APPLICABLE STANDARDS.

MP70686 B/B  
07MAY15