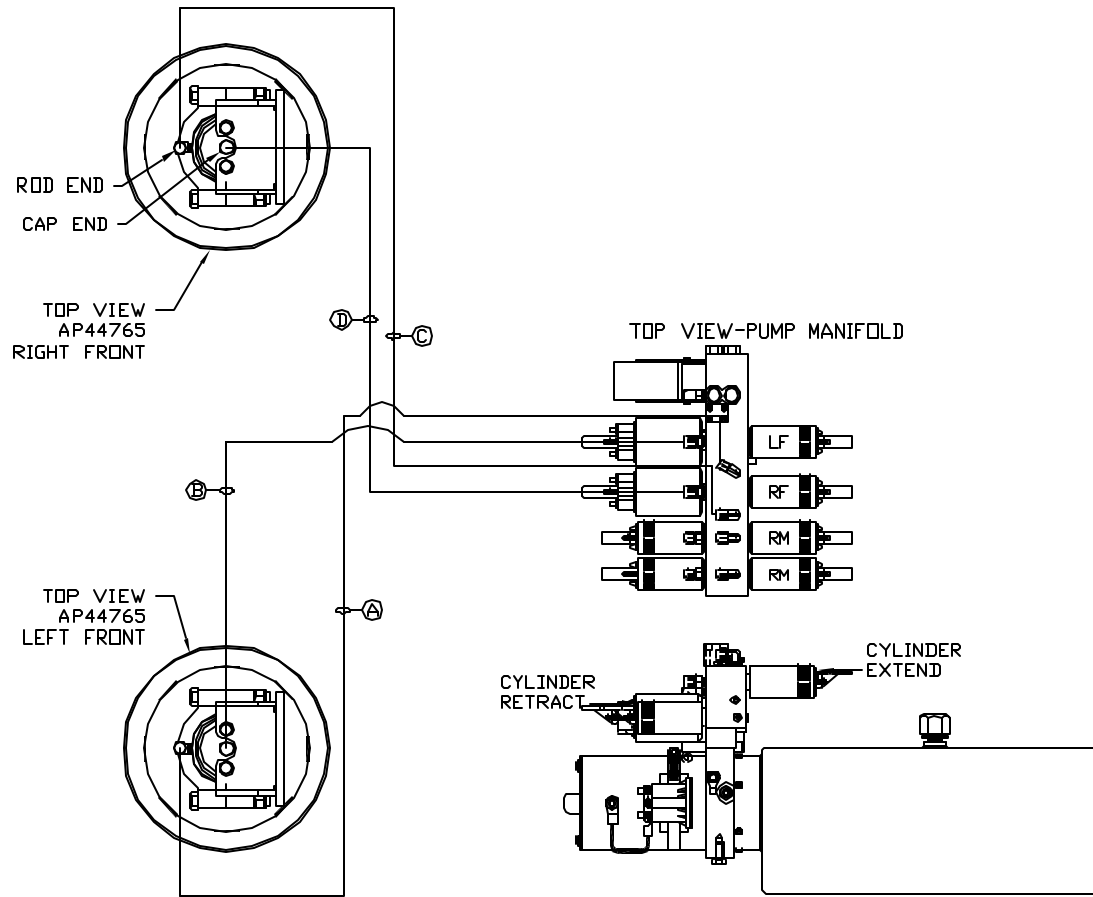


ORIENTATION
 ← FRONT



- Ⓐ AP4064 HOSE ASSY 04 x 300'
 WAS AP4061 HOSE ASSY .25' x 216'
 ROD END
- Ⓑ AP54013 HOSE ASSY 05 x 288'
 WAS AP46310 HOSE ASSY .25/05 x 192'
 CAP END
- Ⓒ AP4064 HOSE ASSY 04 x 300'
 WAS AP4161 HOSE ASSY .25' x 120'
 ROD END
- Ⓓ AP54013 HOSE ASSY 05 x 288'
 WAS AP45250 HOSE ASSY .25/05 x 96'
 CAP END

SIDE VIEW PUMP/MANIFOLD-AP52036

LOCATION AND ORIENTATION OF
 PUMP/MANIFOLD ASSEMBLY WILL
 DIFFER DEPENDING UPON O.E.M.

		HWH		I-80 EXIT 267 SOUTH RT 1 MOSCOW, IOWA 52760	
		SCALE 1:6	DATE 15AUG13	DRAWN BY .	
Ⓐ	16FEB16	UPDATED HOSES			
Ⓓ	07MAY15	CORRECTED TYPO			
NO.	DATE	REVISION			
HYD CONN DIAGRAM					
RENEGADE/KIBBI				DRAWING NUMBER MP70645 A/C	

NOTE: INSTALLATION MUST CONFORM TO GOOD SHOP PRACTICES, SAE STANDARDS, RVIA STANDARDS, AND OTHER APPLICABLE STANDARDS.

CONTROL PACKAGE: AP52029

THE INFORMATION DISCLOSED ON THIS DRAWING IS CONFIDENTIAL AND MUST NOT BE DISCLOSED OR USED IN ANY MANNER WHICH WILL BE DETRIMENTAL TO THE HWH CORPORATION

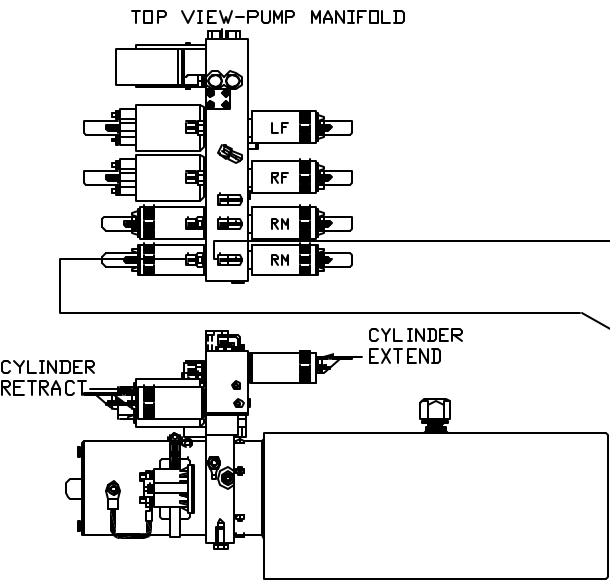
ORIENTATION
 FRONT

*: PART OF THE ROOM
 EXTENSION MECHANISM.

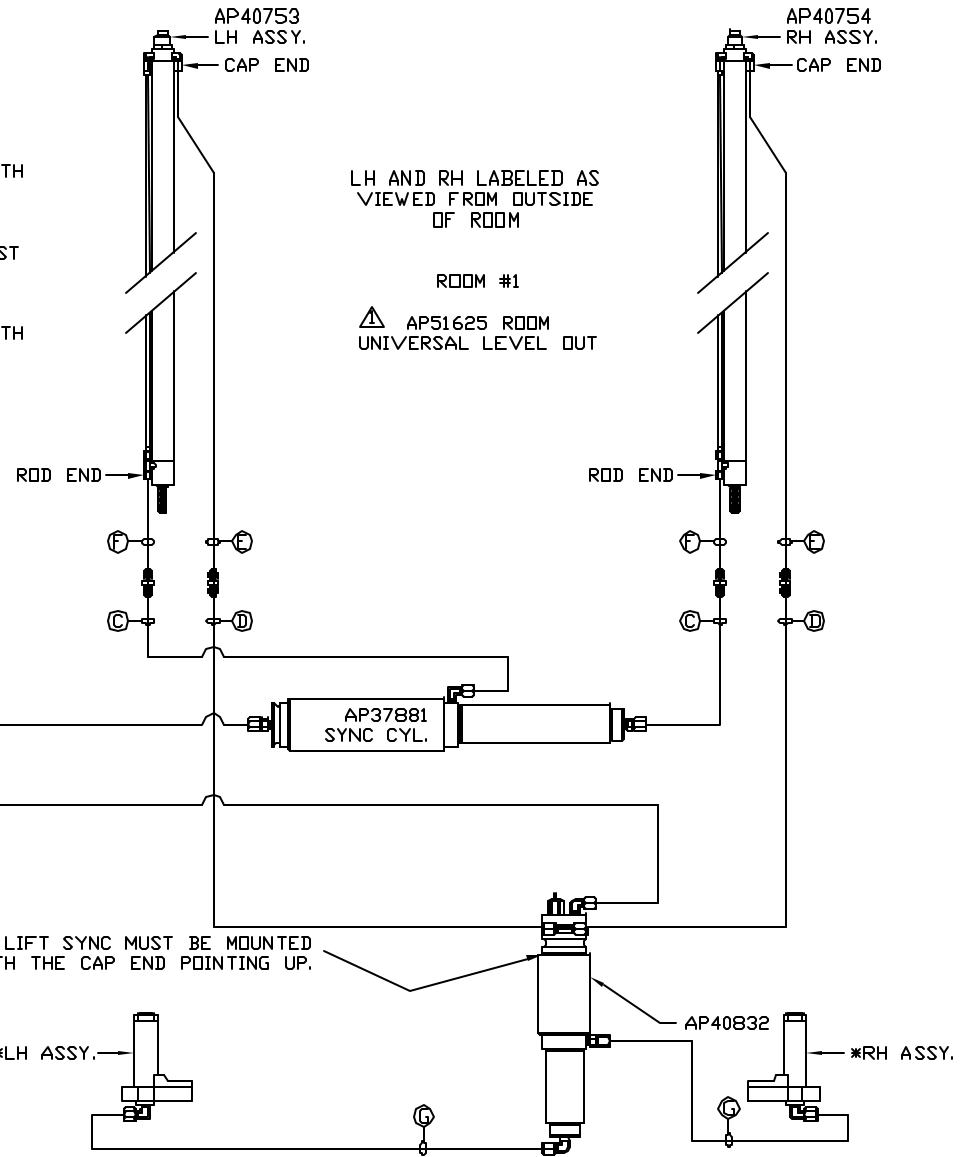
- Ⓐ AP6116 HOSE ASSY .25" x 240"
 ROD END - ALWAYS PRESSURIZED
- Ⓑ AP6116 HOSE ASSY .25" x 240"
 CAP END
- Ⓒ AP49417 HOSE ASSY 03 x 96"
 ROD END - ALWAYS PRESSURIZED - MUST
 MAINTAIN EQUAL LENGTH AND DIAMETER
- Ⓓ AP1412 HOSE ASSY .25" x 84"
 CAP END - MUST MAINTAIN EQUAL LENGTH
 AND DIAMETER

NOTE: HOSES Ⓒ AND Ⓓ ARE INCLUDED
 WITH THE ROOM EXTENSION MECHANISM.

- Ⓔ AP24818 HOSE ASSY HWH02HP x 86"
 CAP END - MUST MAINTAIN EQUAL LENGTH
 AND DIAMETER
- Ⓕ AP24632 HOSE ASSY HWH02HP x 48"
 ROD END - ALWAYS PRESSURIZED - MUST
 MAINTAIN EQUAL LENGTH AND DIAMETER
- Ⓖ AP46693 HOSE ASSY 03 x 48"
 CAP END - MUST MAINTAIN EQUAL LENGTH
 AND DIAMETER



LOCATION AND ORIENTATION OF
 PUMP/MANIFOLD ASSEMBLY WILL
 DIFFER DEPENDING UPON O.E.M.



NOTE: INSTALLATION MUST CONFORM TO GOOD SHOP PRACTICES, SAE
 STANDARDS, RVIA STANDARDS, AND OTHER APPLICABLE STANDARDS.

*: PART OF THE ROOM
EXTENSION MECHANISM.

Ⓐ AP6116 HOSE ASSY .25" x 240"
ROD END - ALWAYS PRESSURIZED

Ⓑ AP6116 HOSE ASSY .25" x 240"
CAP END

Ⓒ AP49417 HOSE ASSY 03 x 96"
ROD END - ALWAYS PRESSURIZED - MUST
MAINTAIN EQUAL LENGTH AND DIAMETER

Ⓓ AP1412 HOSE ASSY .25" x 84"
CAP END - MUST MAINTAIN EQUAL LENGTH
AND DIAMETER

NOTE: HOSES Ⓒ AND Ⓓ ARE INCLUDED
WITH THE ROOM EXTENSION MECHANISM.

Ⓔ AP24818 HOSE ASSY HWH02HP x 86"
CAP END - MUST MAINTAIN EQUAL LENGTH
AND DIAMETER

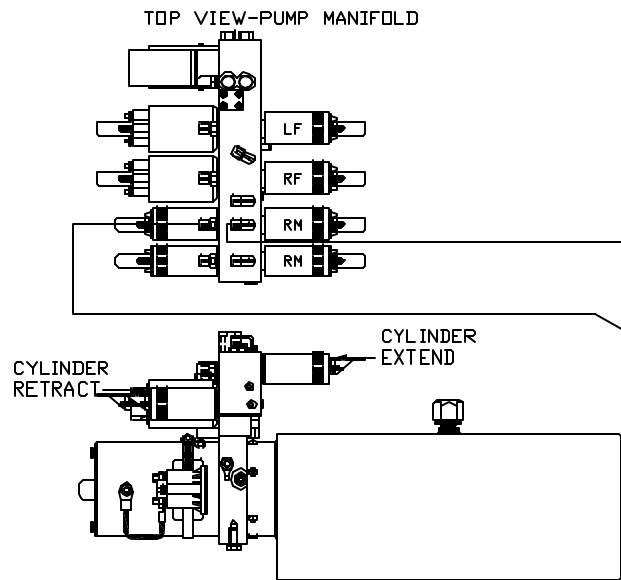
Ⓕ AP24632 HOSE ASSY HWH02HP x 48"
ROD END - ALWAYS PRESSURIZED - MUST
MAINTAIN EQUAL LENGTH AND DIAMETER

Ⓖ AP46693 HOSE ASSY 03 x 48"
CAP END - MUST MAINTAIN EQUAL LENGTH
AND DIAMETER

LH AND RH LABELED AS
VIEWED FROM OUTSIDE
OF ROOM

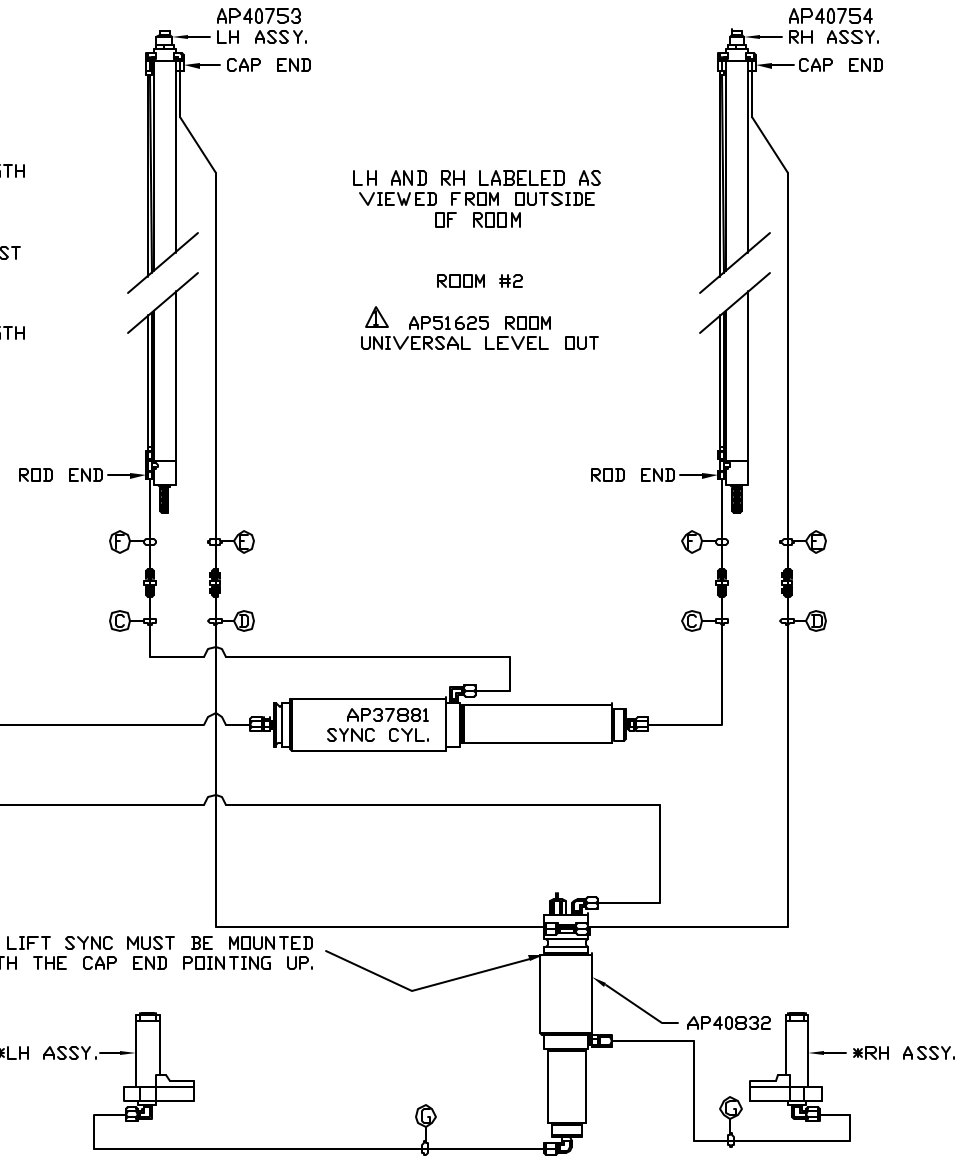
ROOM #2

▲ AP51625 ROOM
UNIVERSAL LEVEL OUT



SIDE VIEW PUMP/MANIFOLD-AP52036

LOCATION AND ORIENTATION OF
PUMP/MANIFOLD ASSEMBLY WILL
DIFFER DEPENDING UPON O.E.M.



NOTE: LIFT SYNC MUST BE MOUNTED
WITH THE CAP END POINTING UP.

NOTE: INSTALLATION MUST CONFORM TO GOOD SHOP PRACTICES, SAE
STANDARDS, RVIA STANDARDS, AND OTHER APPLICABLE STANDARDS.

MP70645 C/C
07MAY15