

- Ⓐ AP6116 HOSE ASSY .25" x 240' - RF ROD END
- Ⓑ AP45368 HOSE ASSY .25/05 x 216' - RF CAP END
- Ⓒ AP6116 HOSE ASSY .25" x 240' - LF ROD END
- Ⓓ AP45368 HOSE ASSY .25/05 x 216' - LF CAP END
- Ⓔ AP4164 HOSE ASSY .25" x 384' - RR ROD END
- Ⓕ AP50407 HOSE ASSY .25/05 x 360' - RR CAP END
- Ⓖ AP4164 HOSE ASSY .25" x 384' - LR ROD END
- Ⓗ AP50407 HOSE ASSY .25/05 x 360' - LR CAP END
- Ⓘ AP4159 HOSE ASSY .25" x 72' - PRESSURE TO REMOTE MANIFOLD
- Ⓣ P6114 RETURN LINE .5" x 72' - RETURN FROM REMOTE MANIFOLD

NOTE: INSTALLATION MUST CONFORM TO GOOD SHOP PRACTICES, SAE STANDARDS, RVIA STANDARDS, AND OTHER APPLICABLE STANDARDS. LEVELING SYSTEM: AP50385

NO.	DATE	REVISION
3	18FEB16	UPDATED HOSES
2	20JUL15	UPDATED HOSES
1	30JUL12	UPDATED HOSES

**HWH** I-80 EXIT 267 SOUTH  
 RT 1 MOSCOW, IDWA 52760

SCALE: 1:6 DATE 31MAY12 DRAWN BY .

**HYD CONN DIAGRAM**

THE INFORMATION DISCLOSED ON THIS DRAWING IS CONFIDENTIAL AND MUST NOT BE DISCLOSED OR USED IN ANY MANNER WHICH WILL BE DETRIMENTAL TO THE HWH CORPORATION

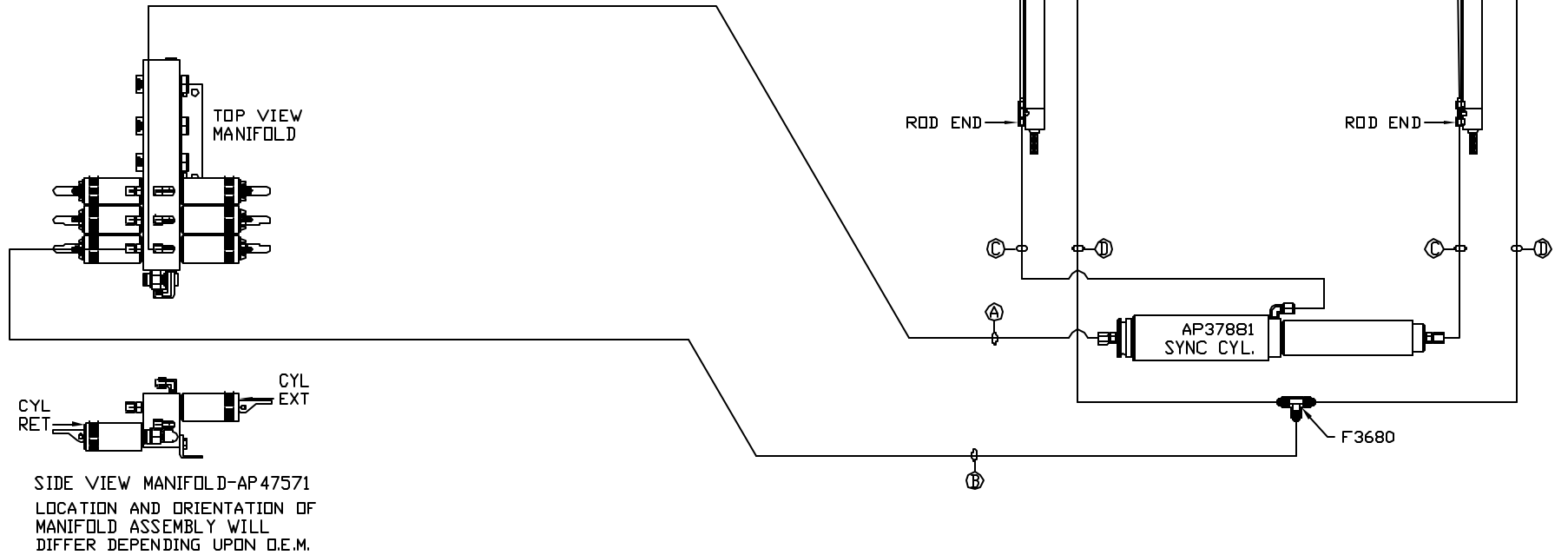
**KIBBI** DRAWING NUMBER  
 MP70542 A/E

AP50208 HOSE KIT ROOM 1

- Ⓐ AP4161 HOSE ASSY .25" x 120"  
ROD END - ALWAYS PRESSURIZED
- Ⓑ AP4062 HOSE ASSY .25" x 132"  
WAS AP4162 HOSE ASSY .25" x 192"  
CAP END
- Ⓒ AP49517 HOSE ASSY 03 x 180"  
WAS AP24646 HOSE ASSY HWH02HP x 156"  
ROD END - ALWAYS PRESSURIZED - MUST  
MAINTAIN EQUAL LENGTH AND DIAMETER
- Ⓓ AP51635 HOSE ASSY 03 x 216"  
WAS AP24652 HOSE ASSY HWH02HP x 192"  
CAP END - MUST MAINTAIN EQUAL LENGTH  
AND DIAMETER

NOTE: HOSE Ⓒ WAS AP49437 HOSE ASSY 03 x 144" AND  
AP24639 HOSE ASSY HWH02HP x 96"  
HOSE Ⓓ WAS AP4065 HOSE ASSY .25" x 156" AND  
AP24644 HOSE ASSY HWH02HP x 132"

NOTE: HOSES Ⓒ AND Ⓓ SHIP LOOSE.



NOTE: INSTALLATION MUST CONFORM TO GOOD SHOP PRACTICES, SAE STANDARDS, RVIA STANDARDS, AND OTHER APPLICABLE STANDARDS.

MP70542 B/E  
20JUL15

AP50210 HOSE KIT ROOM 3

Ⓐ AP5561 HOSE ASSY .25' x 336'  
ROD END - ALWAYS PRESSURIZED

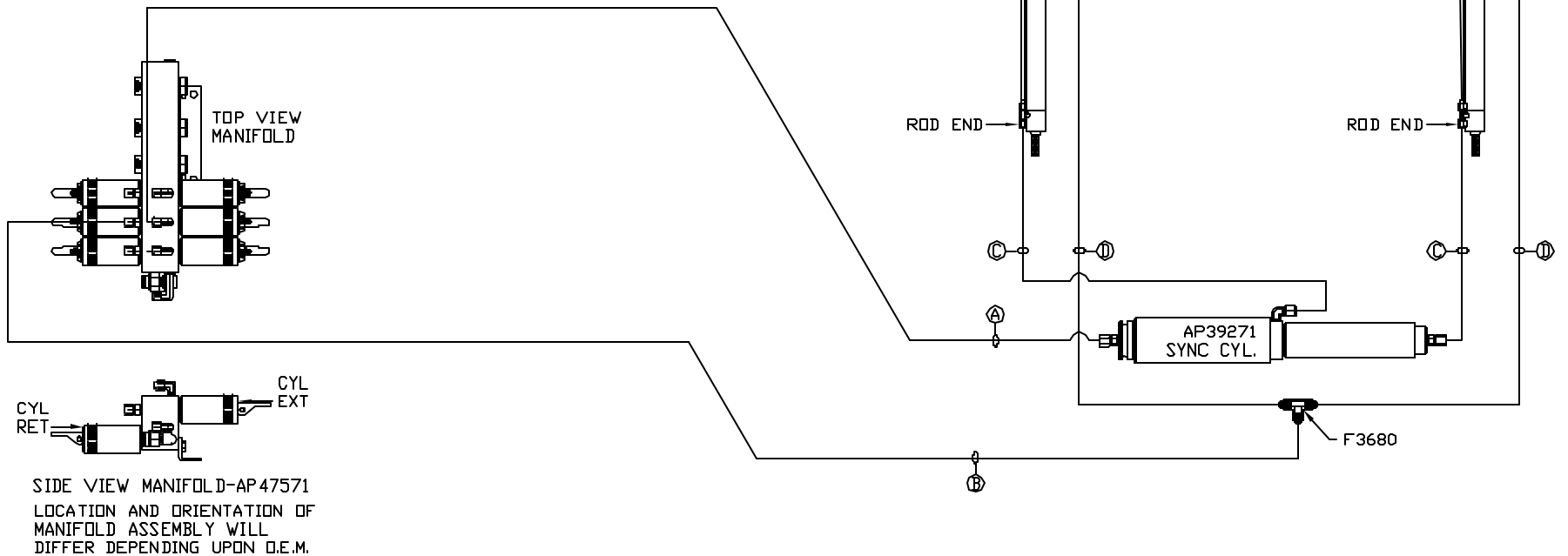
Ⓑ AP13856 HOSE ASSY .25' x 330'  
WAS AP4162 HOSE ASSY .25' x 192"  
CAP END

Ⓒ AP49246 HOSE ASSY 03 x 156'  
WAS AP49517 HOSE ASSY 03 x 180'  
WAS AP24646 HOSE ASSY HWH02HP x 156'  
ROD END - ALWAYS PRESSURIZED - MUST  
MAINTAIN EQUAL LENGTH AND DIAMETER

Ⓓ AP49438 HOSE ASSY 03 x 192'  
WAS AP51635 HOSE ASSY 03 x 216'  
WAS AP24652 HOSE ASSY HWH02HP x 192'  
CAP END - MUST MAINTAIN EQUAL LENGTH  
AND DIAMETER

NOTE: HOSE Ⓒ WAS AP49437 HOSE ASSY 03 x 144" AND  
AP24639 HOSE ASSY HWH02HP x 96"  
HOSE Ⓓ WAS AP4163 HOSE ASSY .25' x 360' AND  
AP24644 HOSE ASSY HWH02HP x 132"

NOTE: HOSES Ⓒ AND Ⓓ SHIP LOOSE.



NOTE: INSTALLATION MUST CONFORM TO GOOD SHOP PRACTICES, SAE  
STANDARDS, RVIA STANDARDS, AND OTHER APPLICABLE STANDARDS.

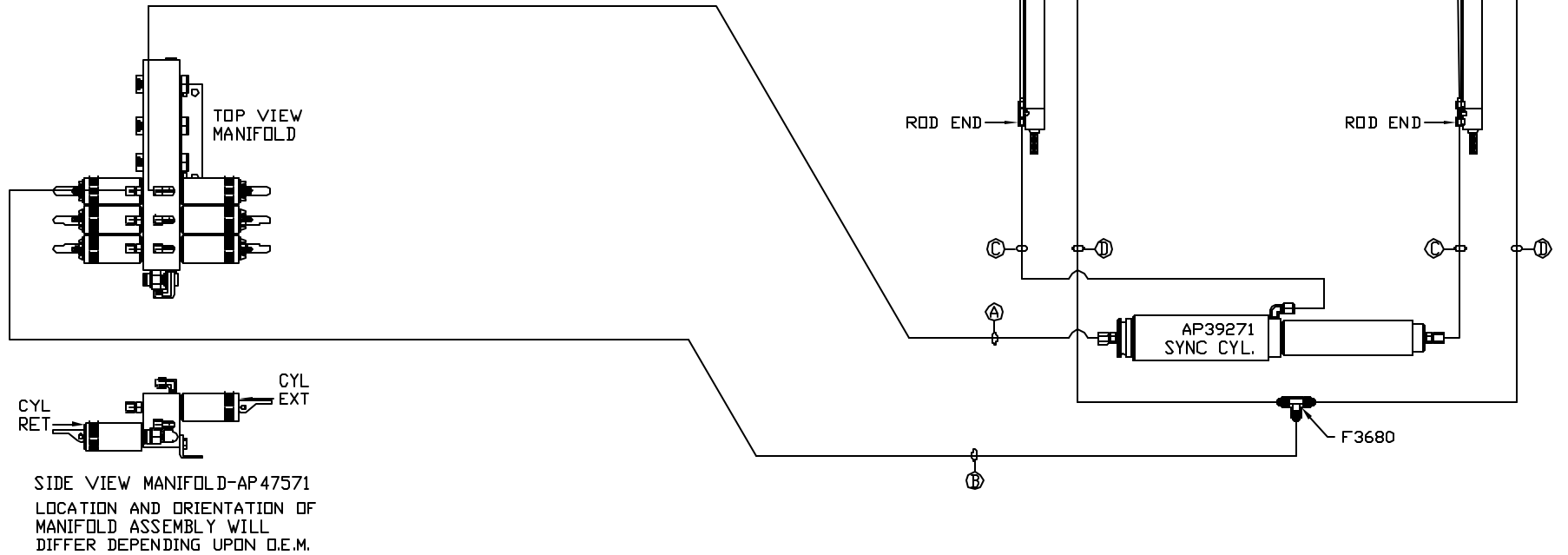
MP70542 C/E  
18FEB16

AP50211 HOSE KIT ROOM 4

- Ⓐ AP4827 HOSE ASSY .25" x 144"  
ROD END - ALWAYS PRESSURIZED
- Ⓑ AP16172 HOSE ASSY .25" x 150"  
WAS AP4162 HOSE ASSY .25" x 192"  
CAP END
- Ⓒ AP49246 HOSE ASSY 03 x 156"  
WAS AP24646 HOSE ASSY HWH02HP x 156"  
ROD END - ALWAYS PRESSURIZED - MUST  
MAINTAIN EQUAL LENGTH AND DIAMETER
- Ⓓ AP49438 HOSE ASSY 03 x 192"  
WAS AP24652 HOSE ASSY HWH02HP x 192"  
CAP END - MUST MAINTAIN EQUAL LENGTH  
AND DIAMETER

NOTE: HOSE Ⓒ WAS AP49437 HOSE ASSY 03 x 144" AND  
AP24639 HOSE ASSY HWH02HP x 96"  
HOSE Ⓓ WAS AP4065 HOSE ASSY .25" x 156" AND  
AP24644 HOSE ASSY HWH02HP x 132"

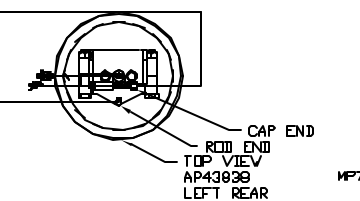
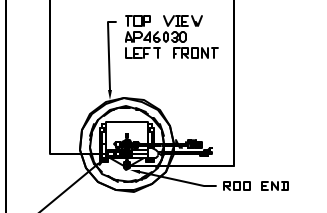
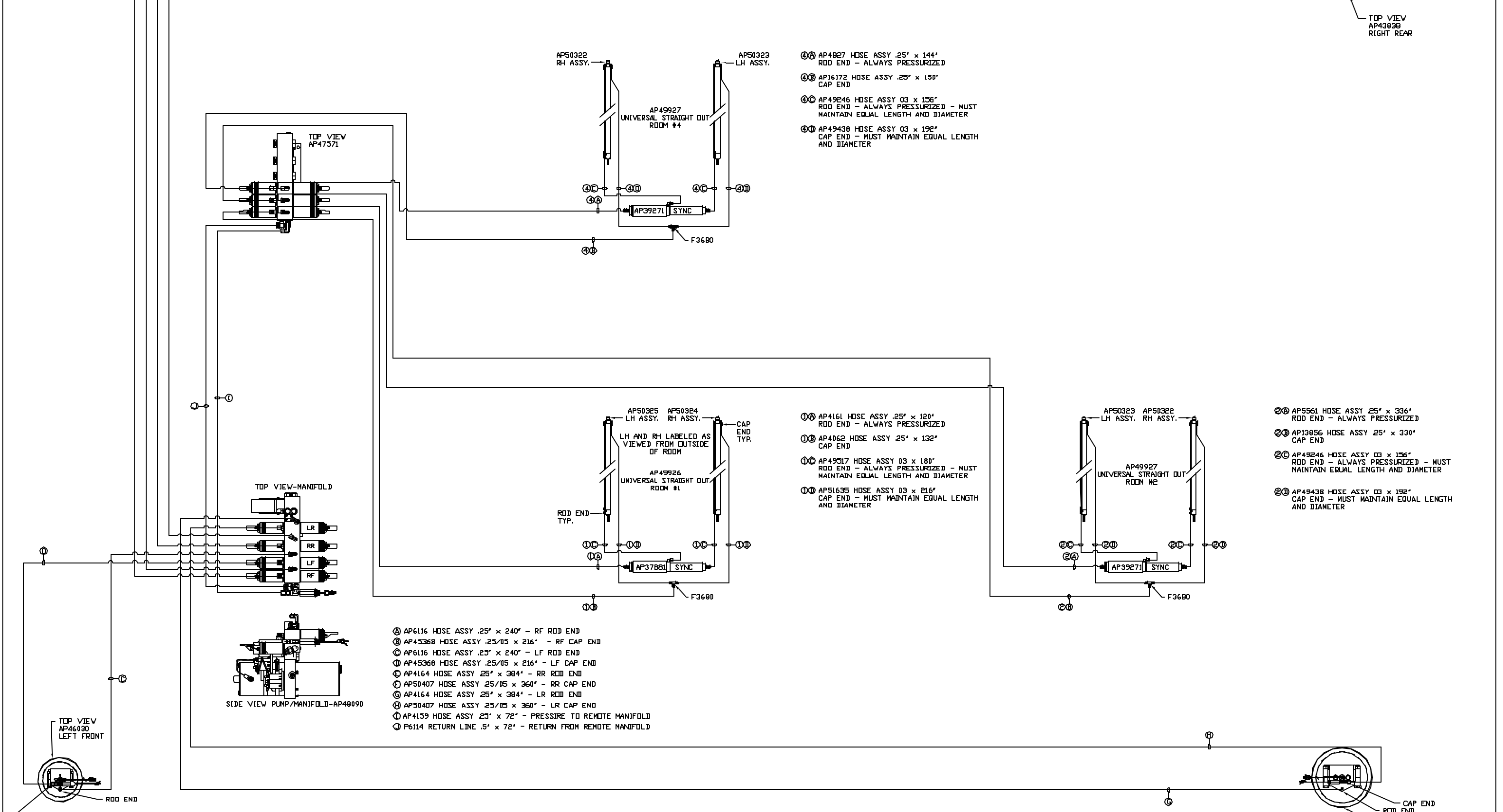
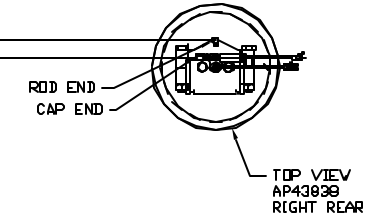
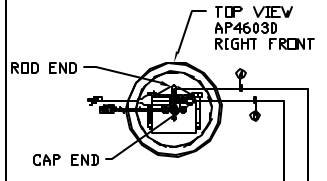
NOTE: HOSES Ⓒ AND Ⓓ SHIP LOOSE.



NOTE: INSTALLATION MUST CONFORM TO GOOD SHOP PRACTICES, SAE  
STANDARDS, RVIA STANDARDS, AND OTHER APPLICABLE STANDARDS.

MP70542 D/E  
20JUL15

ORIENTATION  
FRONT



NOTE: INSTALLATION MUST CONFORM TO GOOD SHOP PRACTICES, SAE STANDARDS, RVIA STANDARDS, AND OTHER APPLICABLE STANDARDS.

- ④ AP6116 HOSE ASSY .25" x 240' - RF ROD END
- ⑤ AP45368 HOSE ASSY .25/05 x 216' - RF CAP END
- ⑥ AP6116 HOSE ASSY .25" x 240' - LF ROD END
- ⑦ AP45368 HOSE ASSY .25/05 x 216' - LF CAP END
- ⑧ AP4164 HOSE ASSY 25' x 384' - RR ROD END
- ⑨ AP50407 HOSE ASSY 25/05 x 360' - RR CAP END
- ⑩ AP4164 HOSE ASSY 25' x 384' - LR ROD END
- ⑪ AP50407 HOSE ASSY 25/05 x 360' - LR CAP END
- ⑫ AP4159 HOSE ASSY 23' x 72' - PRESSURE TO REMOTE MANIFOLD
- ⑬ P6114 RETURN LINE .5' x 72' - RETURN FROM REMOTE MANIFOLD

- ④A AP4827 HOSE ASSY .25" x 144' ROD END - ALWAYS PRESSURIZED
- ④B AP16172 HOSE ASSY .25" x 150' CAP END
- ④C AP49246 HOSE ASSY 03 x 136" ROD END - ALWAYS PRESSURIZED - MUST MAINTAIN EQUAL LENGTH AND DIAMETER
- ④D AP49438 HOSE ASSY 03 x 192" CAP END - MUST MAINTAIN EQUAL LENGTH AND DIAMETER

- ①A AP4161 HOSE ASSY .25" x 120' ROD END - ALWAYS PRESSURIZED
- ①B AP4062 HOSE ASSY .25" x 132' CAP END
- ①C AP49517 HOSE ASSY 03 x 180" ROD END - ALWAYS PRESSURIZED - MUST MAINTAIN EQUAL LENGTH AND DIAMETER
- ①D AP51635 HOSE ASSY 03 x 216" CAP END - MUST MAINTAIN EQUAL LENGTH AND DIAMETER

- ②A AP5561 HOSE ASSY 25' x 336' ROD END - ALWAYS PRESSURIZED
- ②B AP13056 HOSE ASSY 25' x 330' CAP END
- ②C AP49246 HOSE ASSY 03 x 136" ROD END - ALWAYS PRESSURIZED - MUST MAINTAIN EQUAL LENGTH AND DIAMETER
- ②D AP49438 HOSE ASSY 03 x 192" CAP END - MUST MAINTAIN EQUAL LENGTH AND DIAMETER