

- Ⓐ AP6116 HOSE ASSY .25' x 240' - RF ROD END
- Ⓐ Ⓑ AP51468 HOSE ASSY .25/05 x 232' - RF CAP END
- Ⓒ AP6116 HOSE ASSY .25' x 240' - LF ROD END
- Ⓐ Ⓓ AP51468 HOSE ASSY .25/05 x 232' - LF CAP END
- Ⓒ AP4164 HOSE ASSY .25' x 384' - RR ROD END
- Ⓔ AP50407 HOSE ASSY .25/05 x 360' - RR CAP END
- Ⓒ AP4164 HOSE ASSY .25' x 384' - LR ROD END
- Ⓕ AP50407 HOSE ASSY .25/05 x 360' - LR CAP END
- Ⓖ AP4159 HOSE ASSY .25' x 72' - PRESSURE TO REMOTE MANIFOLD
- Ⓖ P6114 RETURN LINE .5' x 72' - RETURN FROM REMOTE MANIFOLD

NOTE: INSTALLATION MUST CONFORM TO GOOD SHOP PRACTICES, SAE STANDARDS, RVIA STANDARDS, AND OTHER APPLICABLE STANDARDS. LEVELING SYSTEM: AP47900

7	24JUN15	UPDATED HOSES
Ⓐ	11JAN13	WAS AP45368
5	30JUL12	UPDATED HOSES
4	11MAY12	UPDATED HOSES, ROOMS
3	23APR12	UPDATED HOSES
2	20APR12	CORRECTED RR JACK CONN.
NO.	DATE	REVISION

THE INFORMATION DISCLOSED ON THIS DRAWING IS CONFIDENTIAL AND MUST NOT BE DISCLOSED OR USED IN ANY MANNER WHICH WILL BE DETRIMENTAL TO THE HWH CORPORATION

HWH		I-80 EXIT 267 SOUTH RT 1 MOSCOW, IDWA 52760	
SCALE: 1:6	DATE: 07MAR12	DRAWN BY: .	
HYD CONN DIAGRAM			
KIBBI			DRAWING NUMBER MP70520 A/F

AP50208 HOSE KIT ROOM 1

Ⓐ AP4161 HOSE ASSY .25' x 120'
ROD END - ALWAYS PRESSURIZED

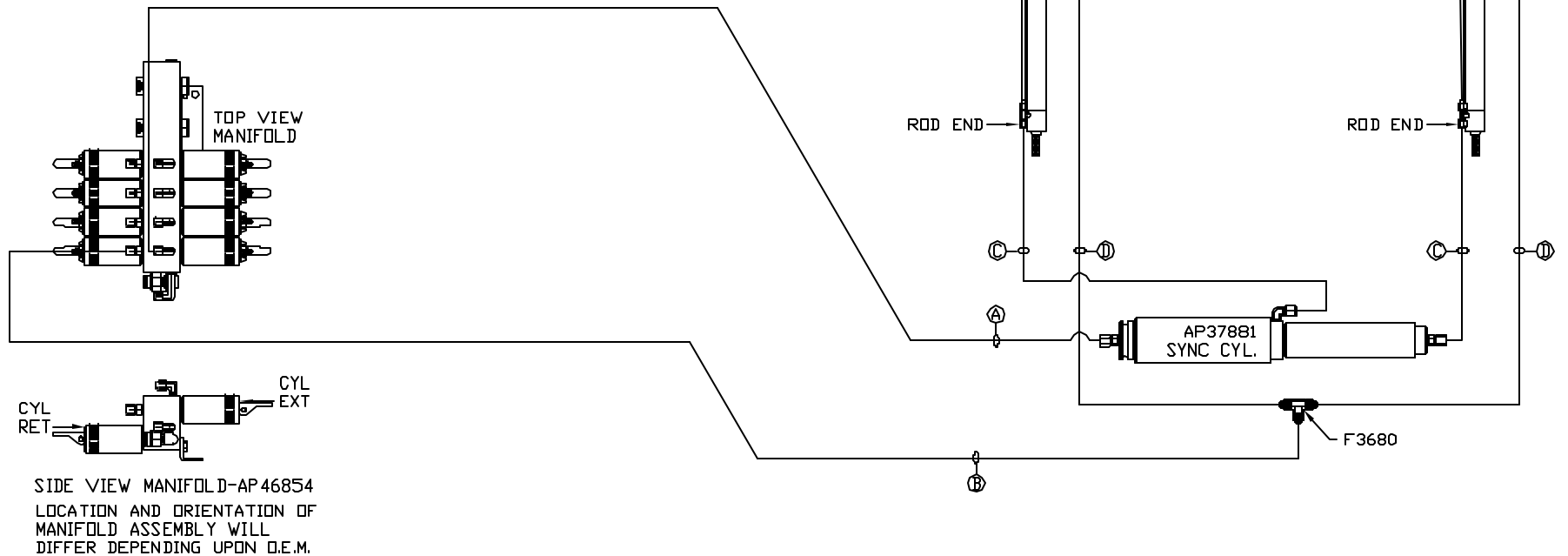
Ⓑ AP4062 HOSE ASSY .25' x 132'
WAS AP4162 HOSE ASSY .25' x 192"
CAP END

Ⓒ AP49517 HOSE ASSY 03 x 180"
WAS AP24646 HOSE ASSY HWH02HP x 156'
ROD END - ALWAYS PRESSURIZED - MUST
MAINTAIN EQUAL LENGTH AND DIAMETER

Ⓓ AP51635 HOSE ASSY 03 x 216"
WAS AP24652 HOSE ASSY HWH02HP x 192"
CAP END - MUST MAINTAIN EQUAL LENGTH
AND DIAMETER

NOTE: HOSE Ⓒ WAS AP49437 HOSE ASSY 03 x 144" AND
AP24639 HOSE ASSY HWH02HP x 96'
HOSE Ⓓ WAS AP4065 HOSE ASSY .25' x 156' AND
AP24644 HOSE ASSY HWH02HP x 132'

NOTE: HOSES Ⓒ AND Ⓓ SHIP LOOSE.



NOTE: INSTALLATION MUST CONFORM TO GOOD SHOP PRACTICES, SAE
STANDARDS, RVIA STANDARDS, AND OTHER APPLICABLE STANDARDS.

MP70520 B/F
24 JUN15

AP50209 HOSE KIT ROOM 2

- Ⓐ AP52740 HOSE ASSY 03 X 480'
 WAS AP36651 HOSE ASSY HWH02HP X 480'
 WAS AP50396 HOSE ASSY 03 X 480'
 ROD END - ALWAYS PRESSURIZED

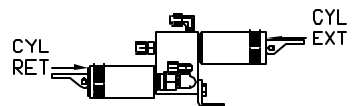
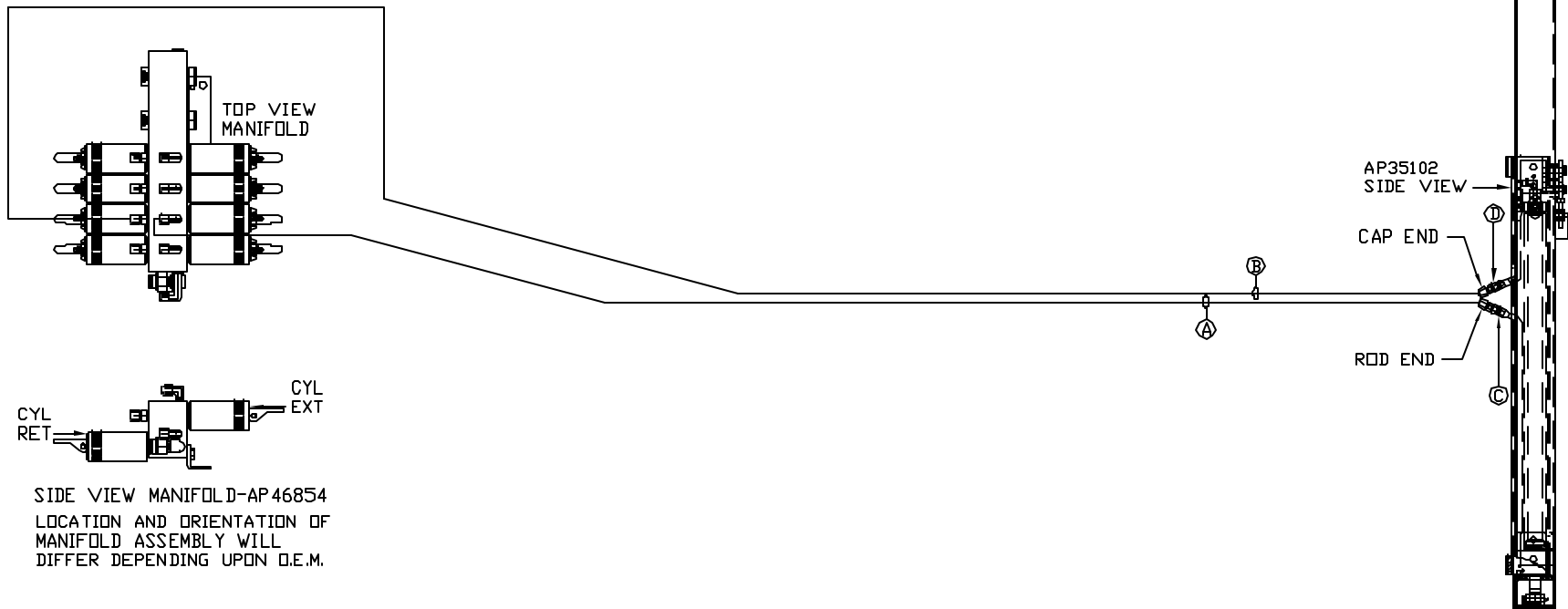
Ⓑ AP6218 HOSE ASSY .25" X 480'
 CAP END
- Ⓒ AP24628 HOSE ASSY HWH02HP X 24.25'
 ROD END - ALWAYS PRESSURIZED

Ⓓ AP24632 HOSE ASSY HWH02HP X 48'
 CAP END

NOTE: HOSES Ⓒ AND Ⓓ ARE INCLUDED WITH THE ROOM EXTENSION MECHANISM.

NOTE: HOSES Ⓐ AND Ⓑ NEED TO BE PLUGGED.

ROOM #2
 AP47905
 BED SLIDE KIT



SIDE VIEW MANIFOLD-AP46854
 LOCATION AND ORIENTATION OF
 MANIFOLD ASSEMBLY WILL
 DIFFER DEPENDING UPON O.E.M.

NOTE: INSTALLATION MUST CONFORM TO GOOD SHOP PRACTICES, SAE STANDARDS, RVIA STANDARDS, AND OTHER APPLICABLE STANDARDS.

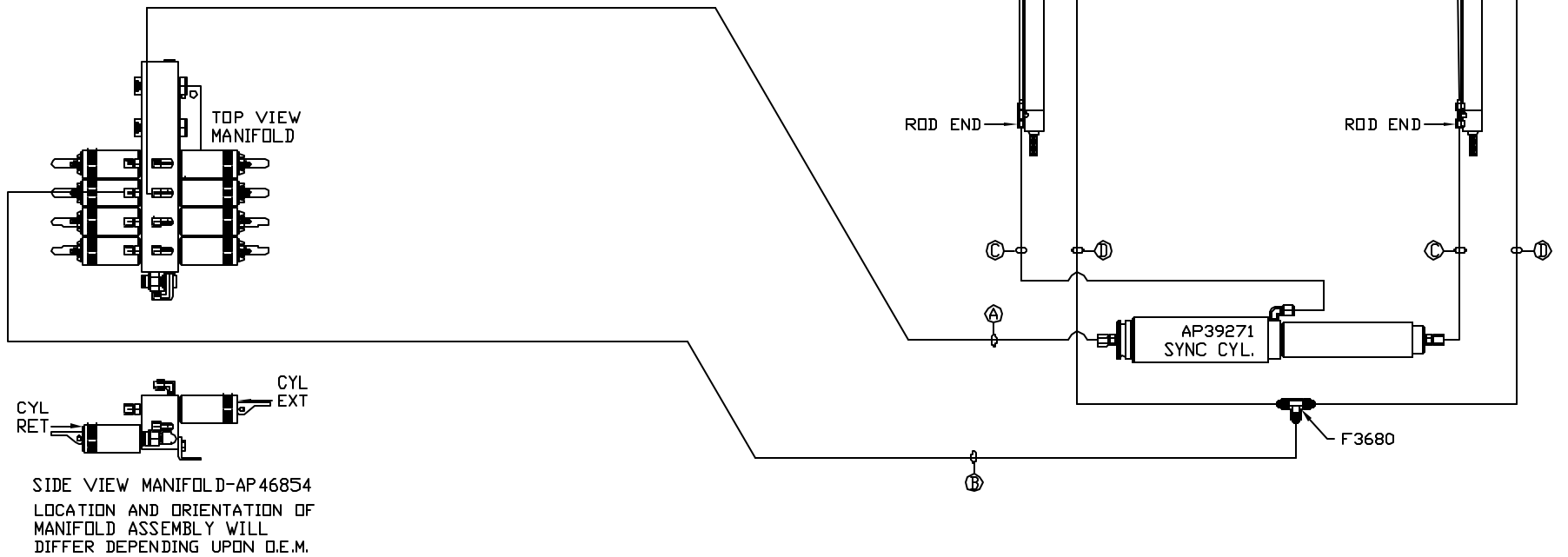
MP70520 C/F
 24JUN15

AP50210 HOSE KIT ROOM 3

- Ⓐ AP5561 HOSE ASSY .25' x 336'
ROD END - ALWAYS PRESSURIZED
- Ⓑ AP13856 HOSE ASSY .25' x 330'
WAS AP4162 HOSE ASSY .25' x 192'
CAP END
- Ⓒ AP49246 HOSE ASSY 03 x 156'
WAS AP24646 HOSE ASSY HWH02HP x 156'
ROD END - ALWAYS PRESSURIZED - MUST
MAINTAIN EQUAL LENGTH AND DIAMETER
- Ⓓ AP49438 HOSE ASSY 03 x 192'
WAS AP24652 HOSE ASSY HWH02HP x 192'
CAP END - MUST MAINTAIN EQUAL LENGTH
AND DIAMETER

NOTE: HOSE Ⓒ WAS AP49437 HOSE ASSY 03 x 144" AND
AP24639 HOSE ASSY HWH02HP x 96"
HOSE Ⓓ WAS AP4163 HOSE ASSY .25' x 360" AND
AP24644 HOSE ASSY HWH02HP x 132"

NOTE: HOSES Ⓒ AND Ⓓ SHIP LOOSE.



NOTE: INSTALLATION MUST CONFORM TO GOOD SHOP PRACTICES, SAE
STANDARDS, RVIA STANDARDS, AND OTHER APPLICABLE STANDARDS.

MP70520 D/F
24 JUN15

AP50211 HOSE KIT ROOM 4

Ⓐ AP4827 HOSE ASSY .25" x 144"
ROD END - ALWAYS PRESSURIZED

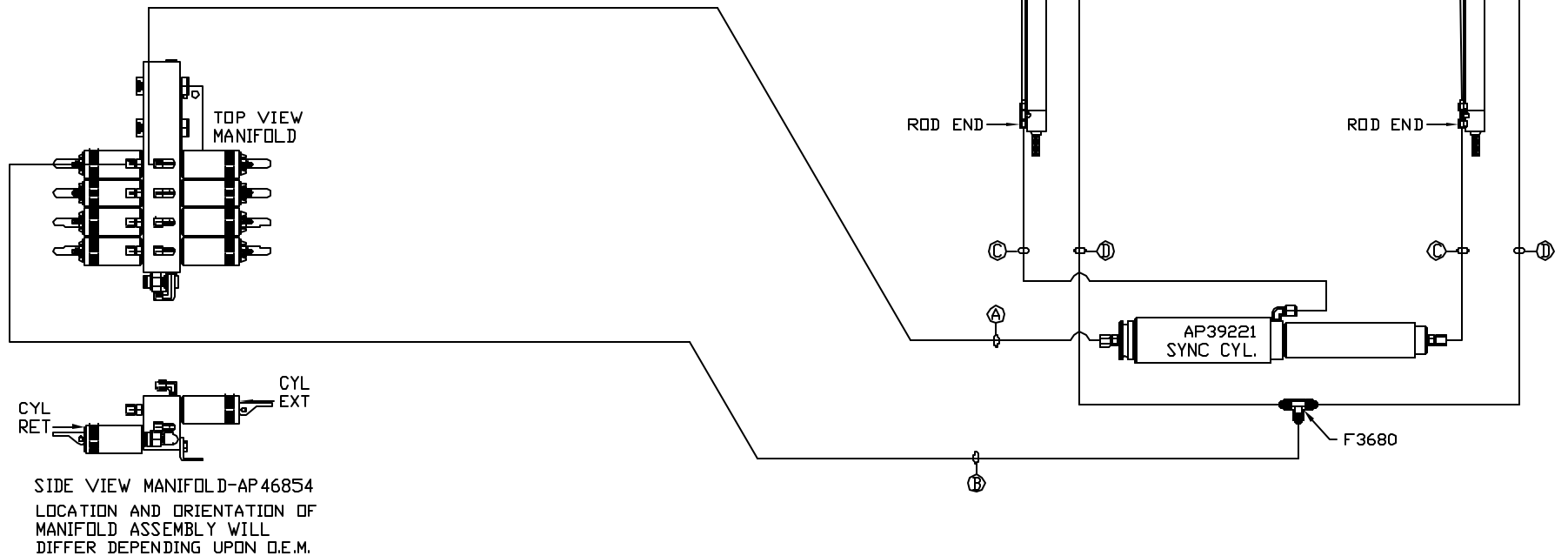
Ⓑ AP16172 HOSE ASSY .25" x 150"
WAS AP4162 HOSE ASSY .25" x 192"
CAP END

Ⓒ AP49246 HOSE ASSY 03 x 156"
WAS AP24646 HOSE ASSY HWH02HP x 156"
ROD END - ALWAYS PRESSURIZED - MUST
MAINTAIN EQUAL LENGTH AND DIAMETER

Ⓓ AP49438 HOSE ASSY 03 x 192"
WAS AP24652 HOSE ASSY HWH02HP x 192"
CAP END - MUST MAINTAIN EQUAL LENGTH
AND DIAMETER

NOTE: HOSE Ⓒ WAS AP49437 HOSE ASSY 03 x 144" AND
AP24639 HOSE ASSY HWH02HP x 96"
HOSE Ⓓ WAS AP4065 HOSE ASSY .25" x 156" AND
AP24644 HOSE ASSY HWH02HP x 132"

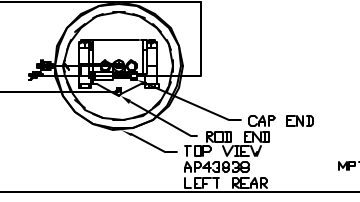
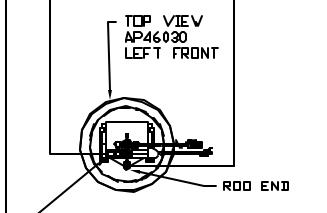
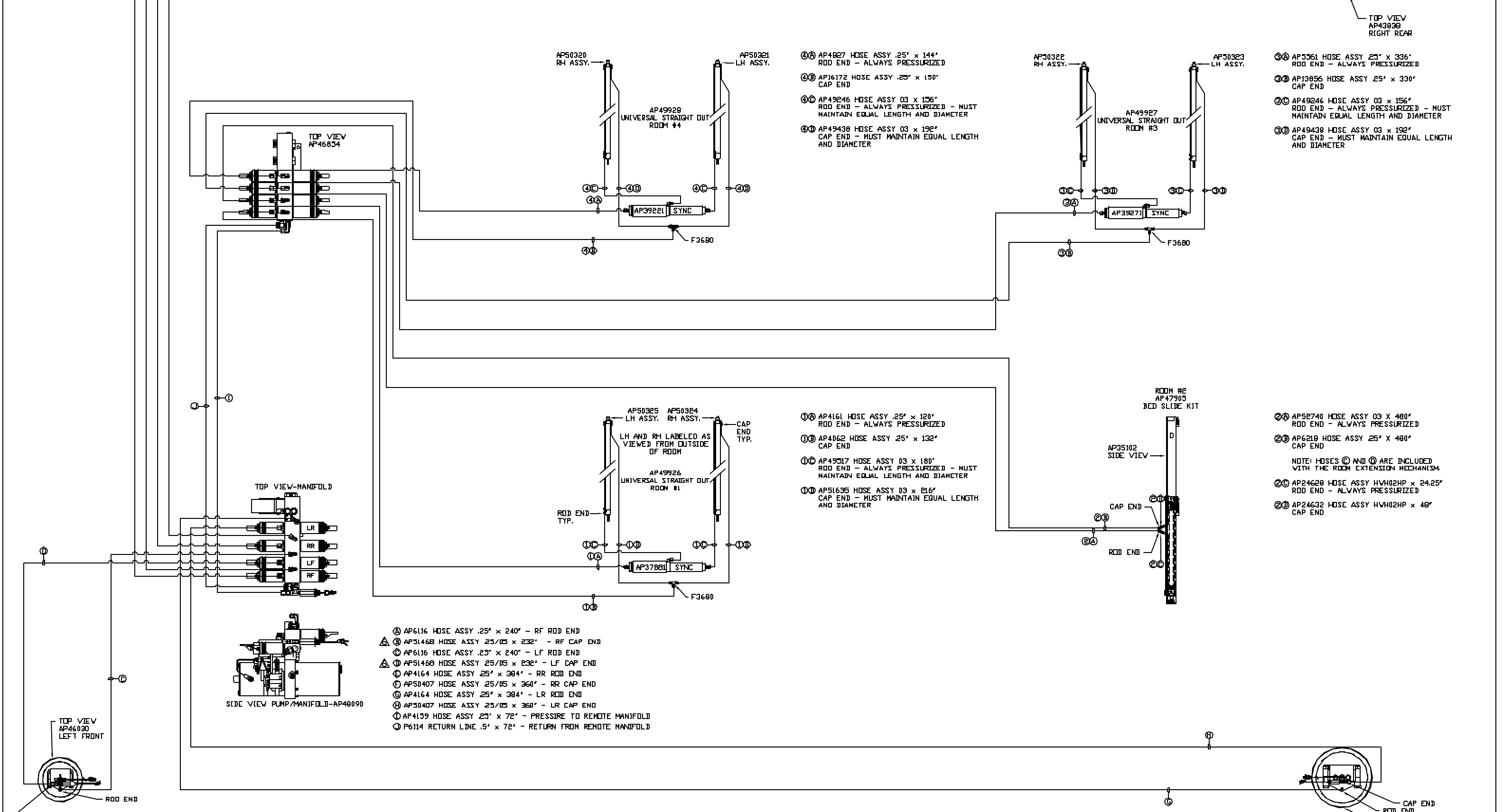
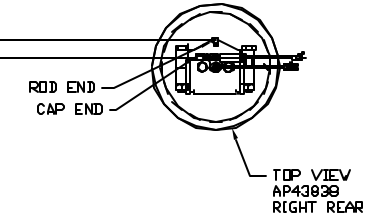
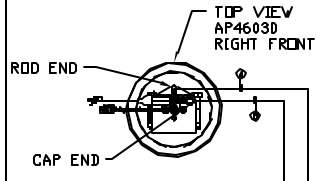
NOTE: HOSES Ⓒ AND Ⓓ SHIP LOOSE.



NOTE: INSTALLATION MUST CONFORM TO GOOD SHOP PRACTICES, SAE
STANDARDS, RVIA STANDARDS, AND OTHER APPLICABLE STANDARDS.

MP70520 E/F
24 JUN 15

ORIENTATION
FRONT



NOTE: INSTALLATION MUST CONFORM TO GOOD SHOP PRACTICES, SAE STANDARDS, RVIA STANDARDS, AND OTHER APPLICABLE STANDARDS.

MP70520 F/F
24JUN15

- ④ AP6116 HOSE ASSY .25" x 240" - RF ROD END
- ④ AP51468 HOSE ASSY .25/05 x 232" - RF CAP END
- ④ AP6116 HOSE ASSY .25" x 240" - LF ROD END
- ④ AP51468 HOSE ASSY .25/05 x 232" - LF CAP END
- ④ AP4164 HOSE ASSY .25" x 384" - RR ROD END
- ④ AP50407 HOSE ASSY .25/05 x 360" - RR CAP END
- ④ AP4164 HOSE ASSY .25" x 384" - LR ROD END
- ④ AP50407 HOSE ASSY .25/05 x 360" - LR CAP END
- ④ AP4159 HOSE ASSY .25" x 72" - PRESSURE TO REMOTE MANIFOLD
- ④ P6114 RETURN LINE .5" x 72" - RETURN FROM REMOTE MANIFOLD

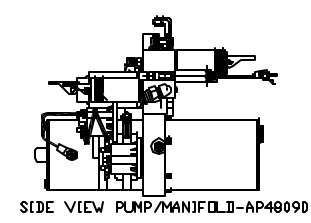
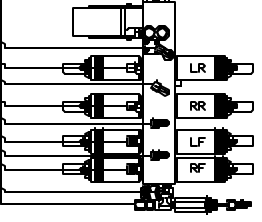
- ④ AP4827 HOSE ASSY .25" x 144" ROD END - ALWAYS PRESSURIZED
- ④ AP16172 HOSE ASSY .25" x 150" CAP END
- ④ AP49246 HOSE ASSY 03 x 156" ROD END - ALWAYS PRESSURIZED - MUST MAINTAIN EQUAL LENGTH AND DIAMETER
- ④ AP49438 HOSE ASSY 03 x 192" CAP END - MUST MAINTAIN EQUAL LENGTH AND DIAMETER

- ④ AP4161 HOSE ASSY .25" x 120" ROD END - ALWAYS PRESSURIZED
- ④ AP4062 HOSE ASSY .25" x 132" CAP END
- ④ AP49517 HOSE ASSY 03 x 180" ROD END - ALWAYS PRESSURIZED - MUST MAINTAIN EQUAL LENGTH AND DIAMETER
- ④ AP51635 HOSE ASSY 03 x 216" CAP END - MUST MAINTAIN EQUAL LENGTH AND DIAMETER

- ④ AP5361 HOSE ASSY .25" x 336" ROD END - ALWAYS PRESSURIZED
- ④ AP13056 HOSE ASSY .25" x 330" CAP END
- ④ AP49246 HOSE ASSY 03 x 156" ROD END - ALWAYS PRESSURIZED - MUST MAINTAIN EQUAL LENGTH AND DIAMETER
- ④ AP49438 HOSE ASSY 03 x 192" CAP END - MUST MAINTAIN EQUAL LENGTH AND DIAMETER

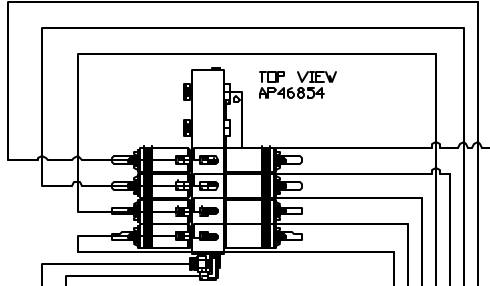
- ④ AP52740 HOSE ASSY 03 x 480" ROD END - ALWAYS PRESSURIZED
- ④ AP621B HOSE ASSY .25" x 480" CAP END
- NOTE: HOSES ③ AND ④ ARE INCLUDED WITH THE ROOM EXTENSION MECHANISM.
- ④ AP24628 HOSE ASSY HVH02HP x 24.25" ROD END - ALWAYS PRESSURIZED
- ④ AP24632 HOSE ASSY HVH02HP x 48" CAP END

TOP VIEW-MANIFOLD

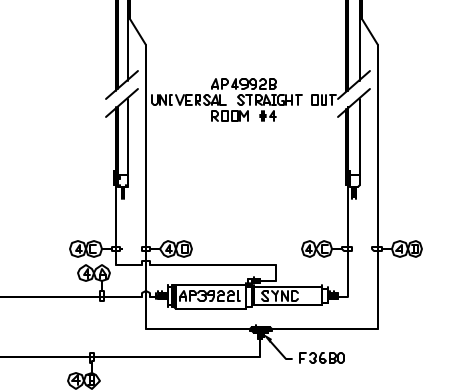


SIDE VIEW PUMP/MANIFOLD-AP4809D

TOP VIEW AP46854



AP50320 RH ASSY. AP50321 LH ASSY.

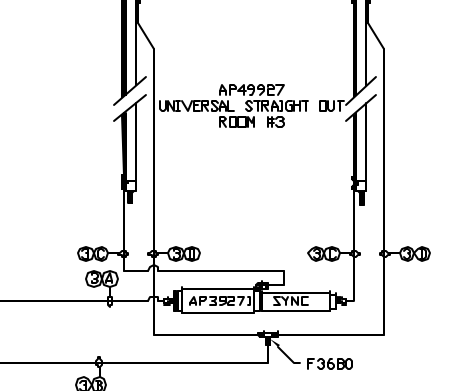


AP49928 UNIVERSAL STRAIGHT OUT ROOM #4

AP39221 SYNC

F3680

AP50322 RH ASSY. AP50323 LH ASSY.

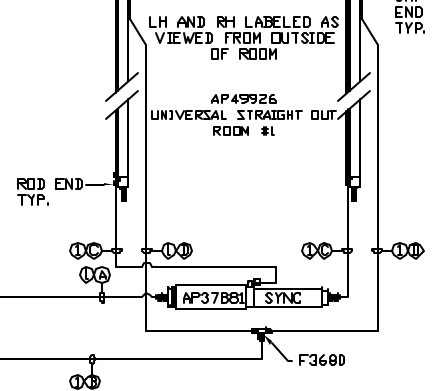


AP49927 UNIVERSAL STRAIGHT OUT ROOM #3

AP39271 SYNC

F3680

AP50325 LH ASSY. AP50324 RH ASSY. CAP END TYP.

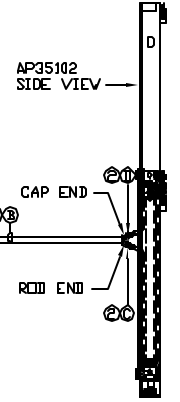


AP49926 UNIVERSAL STRAIGHT OUT ROOM #1

AP37881 SYNC

F3680

ROOM #2 AP47903 BED SLIDE KIT



AP35102 SIDE VIEW

CAP END

ROD END