

RC35 Easy Add Pat. Pending

Keyless Entry System

Keyless Entry For Any Door.

Adding Keyless Entry & Power Locking Made Simple.

5 Door Capable

Adding Slave Relay Pack Increases by 5

Weather Resistant

More Flexibility In Installation.

Flex Switch Wireless

13 Can Be Installed Anywhere In vehicle

Code Learning

A Combination of 10 Fobs & Flex Switches
Can Be Added In Memory.

Keyless Entry System ISO 9002



Two T-25 Fobs Harnessing Pig Tail, 12v., Instructions, Relay Slave Packs Are Sold Separately
Flex Switch Is Sold Separately. 3 YR Limited Warranty, Ask For Details.

Keyless Entry Optional For
MES 2-4D Cab Power Lock Kit

Wireless cab to
body switching
eliminates time
consuming
wiring to cab.



Flex Switch Features:
Familiar Rocker Switch Style.
Wireless Switching.
Mounts On Any Flat Surface.
Activates Door Locking Sequence.
Easily Coded.
Expected Battery Life 2-5 Years.

CODE LEARNING

Remove and restore power,
within 5 seconds, press button
1 and 2 at the same time.
System will then enter the
code learning mode. The
UNLOCK OUTPUT will trigger
to remind you the system is in
code learning mode.



KEY FOB (TRANSMITTERS) STYLES
10 Total Transmitters Can Be Learned.
Black Castings Are Standard.
Color And Private Labeling Are Available.

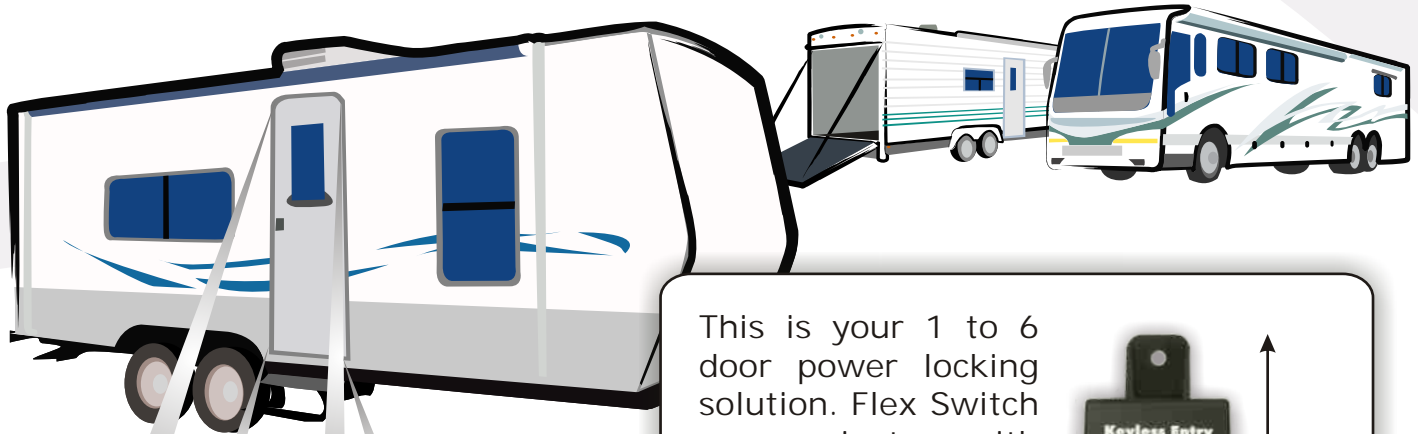


RC35a Keyless Entry / Relay Control Features Include:

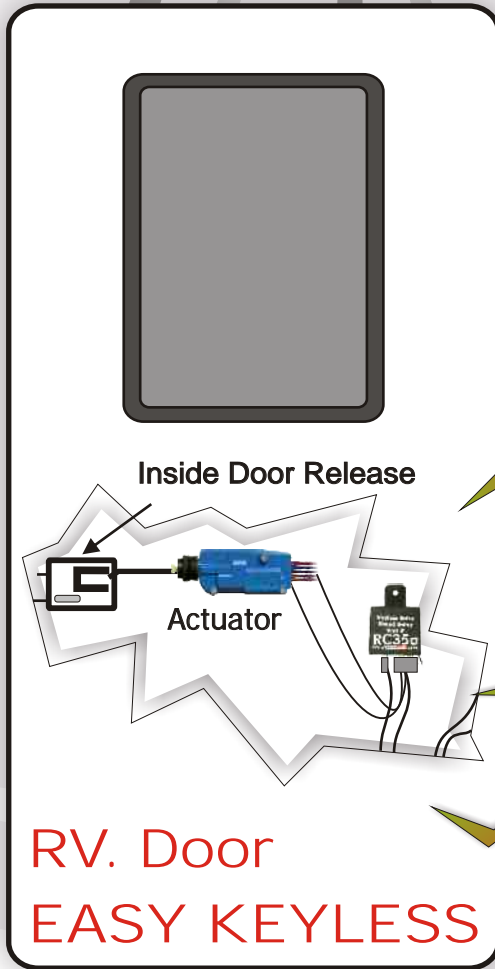
- *Communication With MES 2-4D Power Door Locking Systems.
- *On Board Relays Alone Directly Power Up To 5 Actuators.
- *Key Fobs Or Flex Switches & Hardwired Switches Can Be Easily Added.
- *Timed Output, Positive+/Negative- Input Triggers Capable.

RC35 Easy Add Pat. Pending

Keyless Entry Security System For Your RV and Motor Coaches



This is your 1 to 6 door power locking solution. Flex Switch communicates with this new keyless entry controller making wiring a thing of the past.



Kitchen



Bathroom



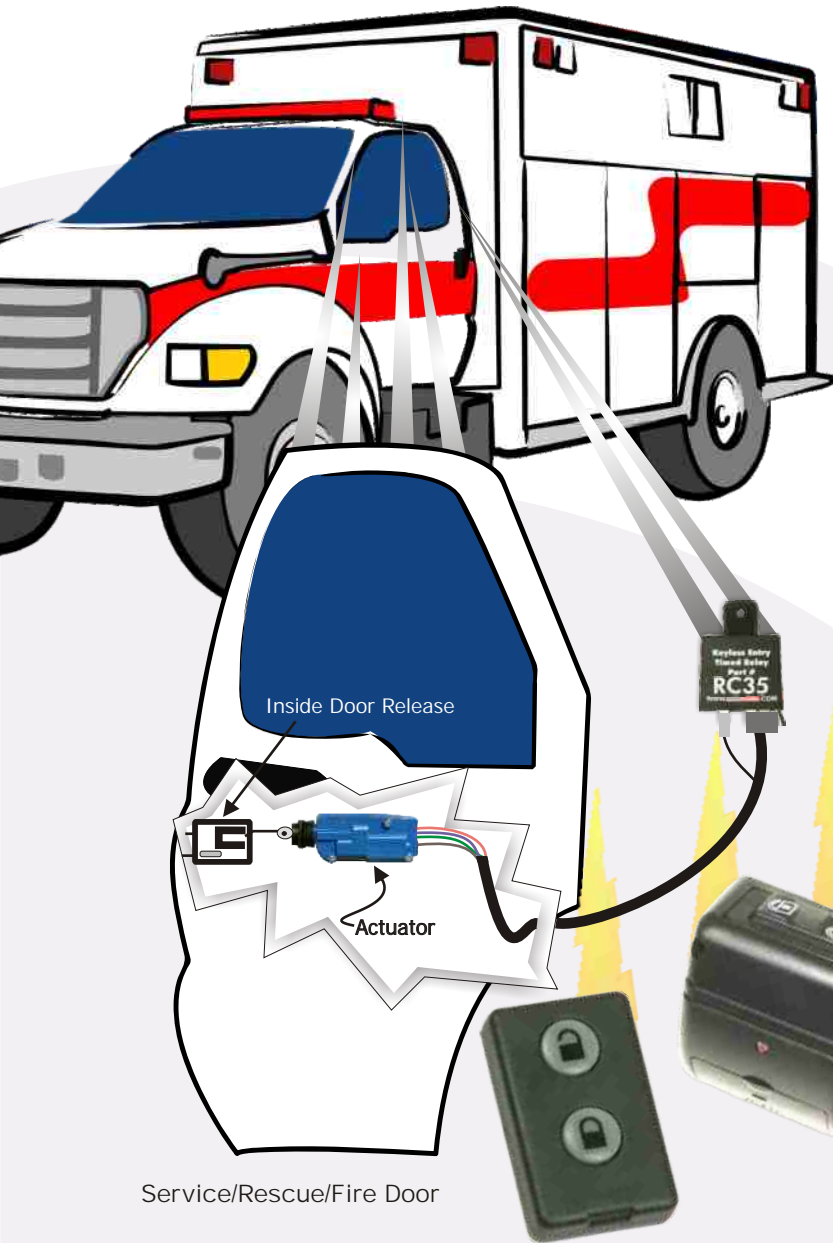
Driver Area



- Communication with aftermarket and factory power locking systems.
- On board relays alone directly power all actuators.
- Key fobs can be easily programmed and added.
- Hardwired switches can be added.
- Timed output, positive/negative.
- Six door capable, slave relay pack increases power locking even more.
- Weather Resistant allows more flexibility in installation.
- Combination of 10 fobs and Flex Switches can be added to memory.

RC35 Easy Add Pat. Pending

Keyless Entry Security System For Your Compartments and Vehicles



Standard Features:

- Communication with aftermarket and factory power locking systems.
- On board relays alone directly power all actuators.
- Key fobs can be easily programmed and added.
- Hardwired switches can be added.
- Timed output, positive/negative.
- Six door capable, slave relay pack increases power locking even more.
- Weather Resistant allows more flexibility in installation.
- Combination of 10 fobs and Flex Switches can be added to memory.

Flex Switches™ communicates with most HDC controller making wiring a thing of the past.



RC35 Easy Add Pat. Pending

Keyless Entry Security System For Your RV and Motor Coaches

OEM Standard MES Actuators used as power lock for new work, or will retro-fit all OEM door locking configurations. Kits designed to allow for installation on every OEM door or tool box configuration.

HD-2D:



Keyless Fob Power Locking retro-fits to OEM door locking configurations and converts to power locking. Includes (2) key activated flat actuators, (2) T-25 Fobs, hardware, timed relay, wiring harness and installation instructions.

HD-4D:



Keyless Fob Power Locking retro-fits to OEM door locking configurations and converts to power locking. Includes (4) key activated flat actuators, (2) T-25 Fobs, hardware, timed relay, wiring harness and installation instructions.

WHY SHOULD I CHOOSE HDC'S POWER LOCKING KIT?

HDC's new actuators are the industries highest grade power lock and no one else has them. They are cycle tested over 180,000 uses. Less amperage allows more power lock capability, not to mention they are smaller and offer more mounting situations. New Act is also the only actuator with detachable nose-pieces to fit any type of locking situation.