



ZT

Parts Manual

Models:

915208 – ZT 34 CARB
(SN 000101 +)

915210 – ZT 34
(SN 000101 +)

915212 – ZT 42
(SN 000101 +)

915214 – ZT 50
(SN 000101 +)

915232 – ZT 42 CARB
(SN 000101 +)

915234 – ZT 50 CARB
(SN 000101 +)

915244 – ZT 34
(SN 000101 +)

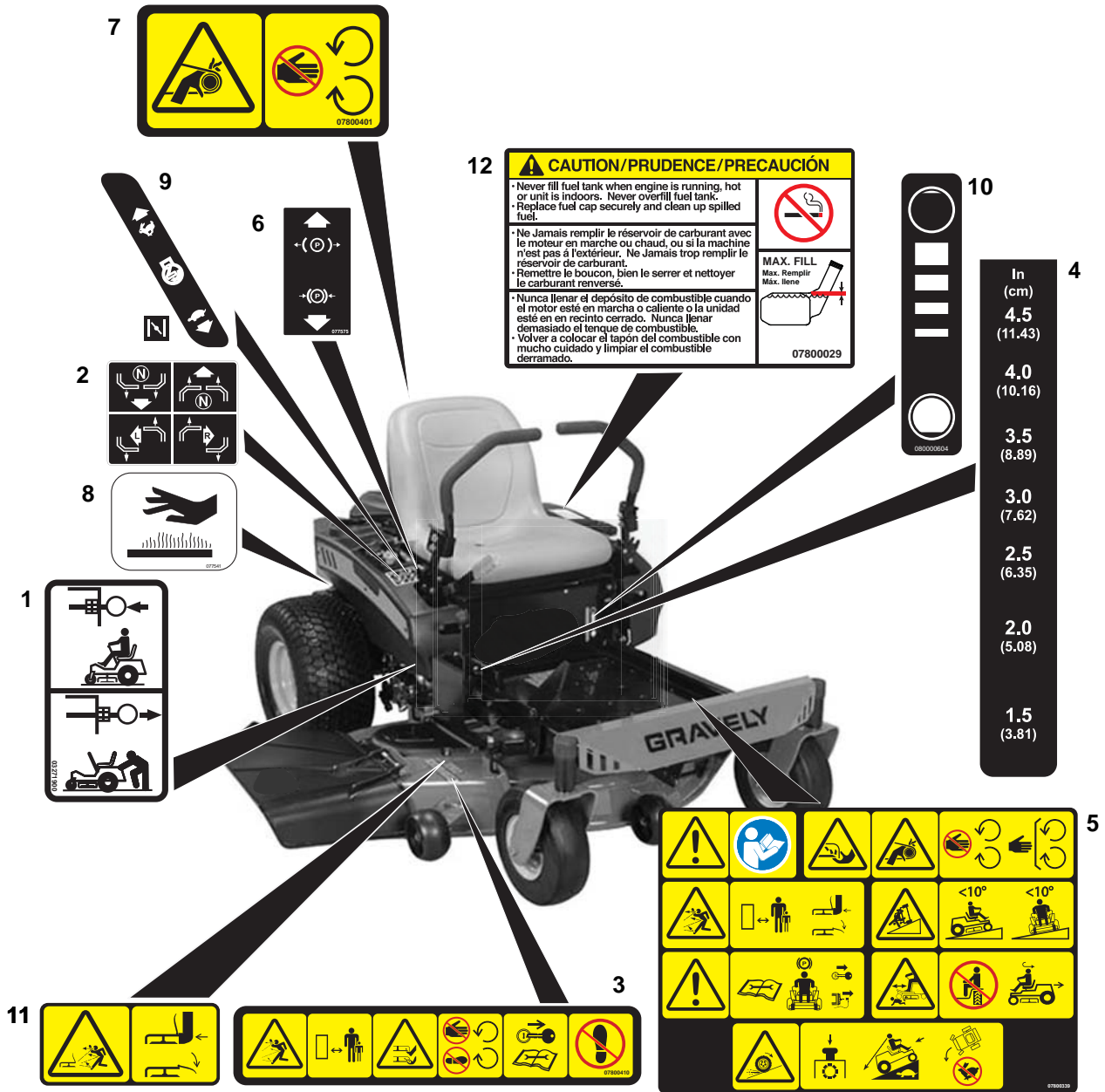
915246 – ZT 42
(SN 000101 +)

TABLE OF CONTENTS

Decals – Safety	3
Decals – Style.....	4
Frame, Hood, Fenders, Casters and Tires – Non-CARB.....	5
Frame, Hood, Fenders, Casters and Tires – CARB	7
Seat and Seat Support – 34”	9
Seat and Seat Support – 42” and 50”	11
Transaxle, Dump Valves and Rear Wheels.....	13
Parking Brake	15
Steering Controls.....	17
Engine, Exhaust, Belts and Idlers.....	19
Fuel Tank.....	21
Continuity Diagram	22
Electrical System	23
Wiring Diagram.....	25
Mower Deck Lift.....	27
Mower Deck, Belt and Idlers – 34”	29
Mower Deck, Belt and Idlers – 42” and 50”	31
Belt Covers and Blades – 34”	33
Belt Covers and Blades – 42” and 50”.....	35

DECALS – SAFETY

Model All



12 CAUTION/PRUDENCE/PRECAUCIÓN

- Never fill fuel tank when engine is running, hot or unit is indoors. Never overfill fuel tank.
- Replace fuel cap securely and clean up spilled fuel.
- Ne jamais remplir le réservoir de carburant avec le moteur en marche ou chaud, ou si la machine n'est pas à l'extérieur. Ne jamais trop remplir le réservoir de carburant.
- Remettez le bouchon, bien le serrer et nettoyer le carburant renversé.
- Nunca llenar el depósito de combustible cuando el motor esté en marcha o caliente o la unidad esté en un recinto cerrado. Nunca llenar demasiado el tanque de combustible.
- Volver a colocar el tapón del combustible con mucho cuidado y limpiar el combustible derramado.

MAX. FILL
Max. Remplir
Máx. llene

07800029

In (cm)	4
4.5 (11.43)	
4.0 (10.16)	
3.5 (8.89)	
3.0 (7.62)	
2.5 (6.35)	
2.0 (5.08)	
1.5 (3.81)	

Item	Part No.	Qty.	Description
1	03271900	2	Decal, Transmission Disconnect
2	07757600	1	Decal, Instructional
3	07800410	2	Decal, Deck Safety
4	07800334	1	Decal, Height of Cut
5	07800403	1	Decal, Main Safety
6	07757500	1	Decal, Parking Brake Lever
7	07800401	1	Decal, Safety – Guarding
8	07754100	2	Decal, Hot Surface
9	05301400	1	Decal, Speed Control
10	08000604	1	Decal, Fuel Level
11	07800402	1	Decal, Safety – Deck Guarding
12	07800029	1	Decal, Fuel Warning

DECALS – STYLE

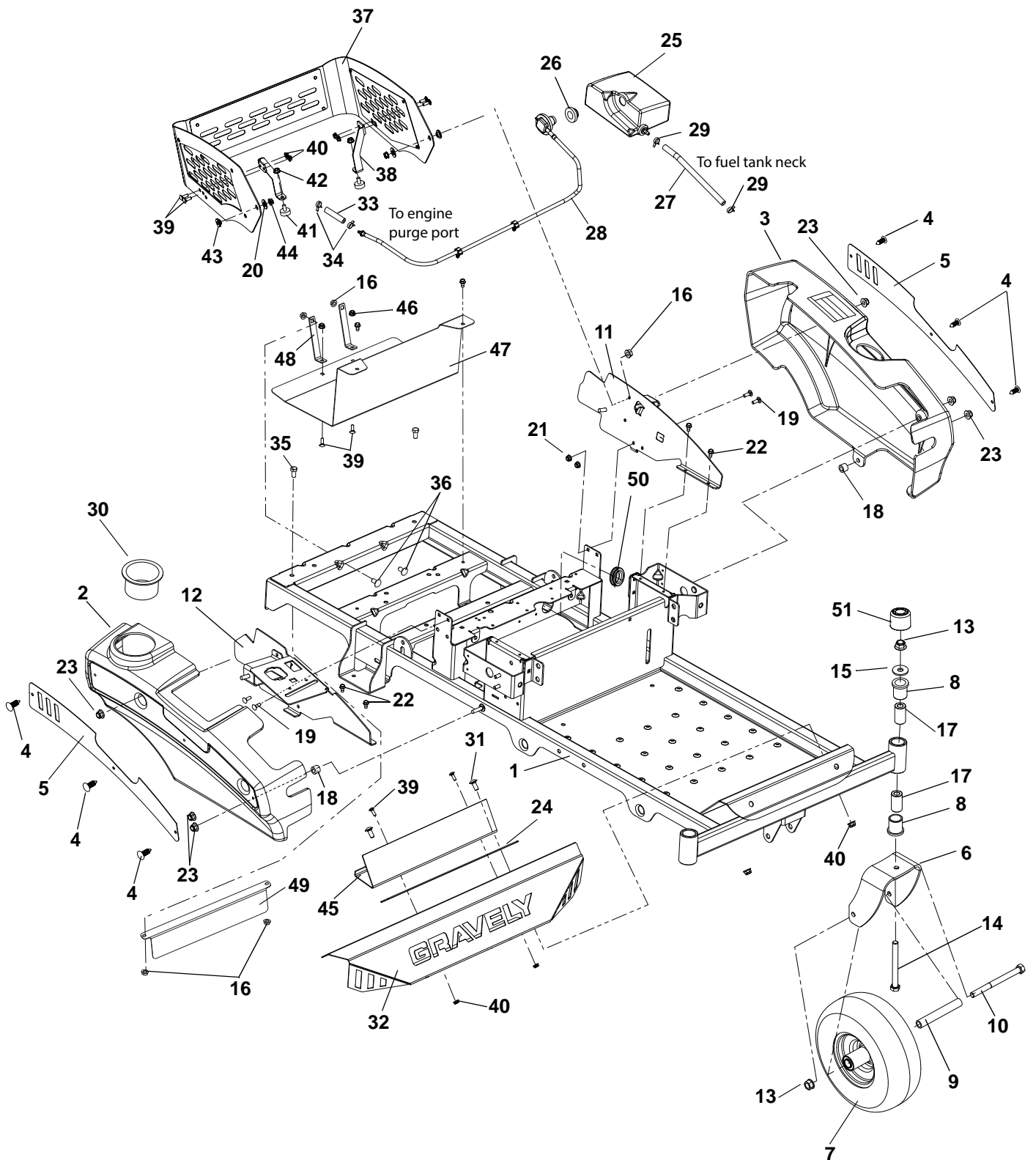
Model All



Item	Part No.	Qty.	Description
1	07800739	1	Decal, Gravely ZT 34 (915208, 210, 244)
	07800740	1	Decal, Gravely ZT 42 (915212, 232, 246)
	07800801	1	Decal, Gravely ZT 50 (915214, 234)
2	08000507	1	Decal, Gravely Heritage, Small
3	07800516	1	Decal, Deck Warranty - XCEL
4	07800336	1	Decal, U1 Battery Replacement
5	08001038	1	Decal, Made in USA

FRAME, HOOD, FENDERS, CASTERS AND TIRES – NON-CARB

Model 915210, 212, 214, 244, 246



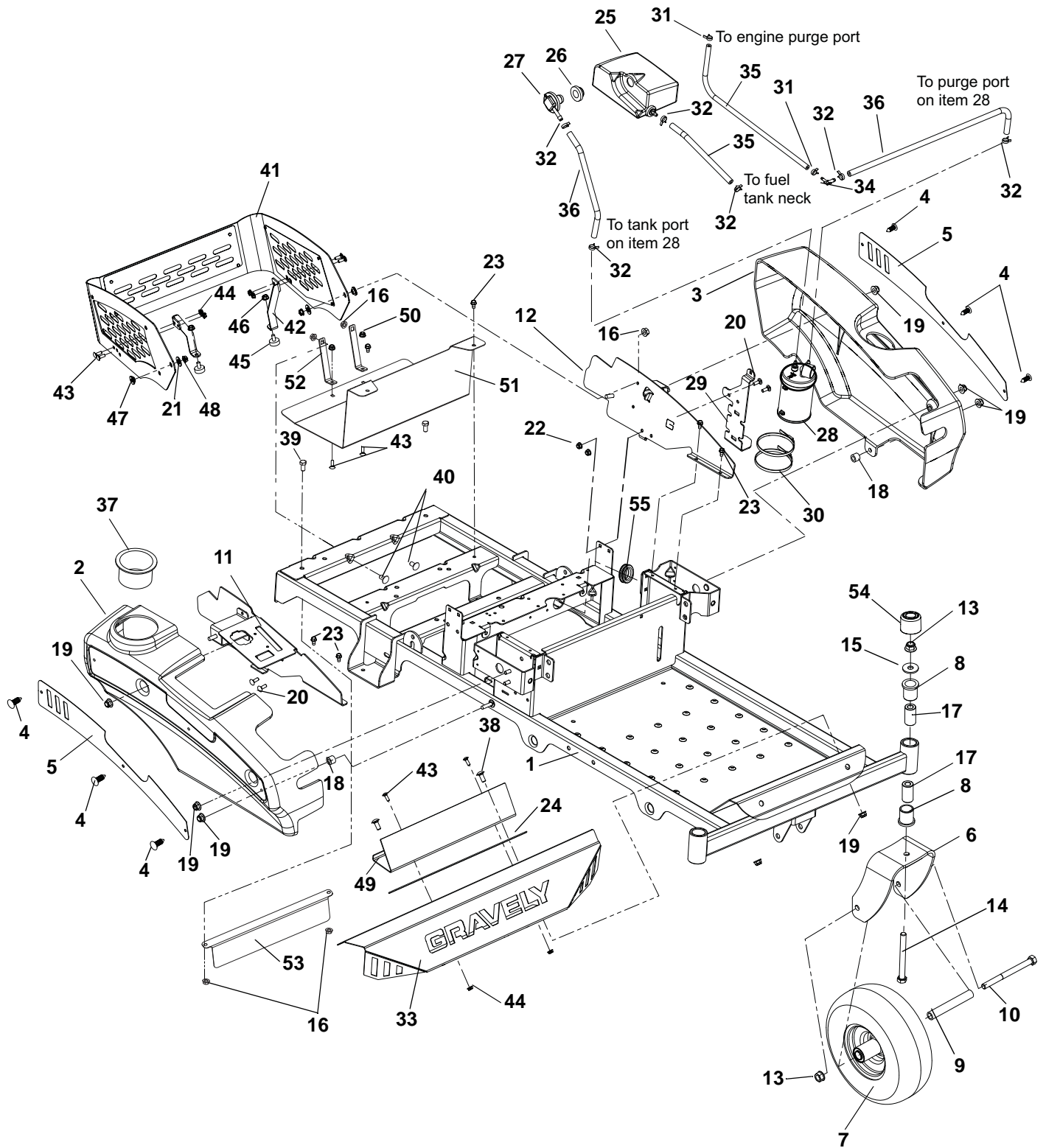
FRAME, HOOD, FENDERS, CASTERS AND TIRES – NON-CARB

Model 915210, 212, 214, 244, 246

Item	Part No.	Qty.	Description
1	51525900	1	Weldment, Frame
2	03768600	1	Fender, Right Hand
3	03768700	1	Fender, Left Hand
4	07500125	6	Rivet, Nylon
5	04717553	2	Plate, Fender
6	03368553	2	Fork, Caster
7	07101127	2	Wheel/Tire Assembly, 11 x 4-5
8	05500934	4	Bushing, Flange 1.00 x 1.25 x 1.50 x 1.50
9	00278500	2	Spacer, Wheel
10	05964400	2	Bolt, Hex .50-13 x 6.50
11	04717353	1	Weldment, Left Hand Fender Mount
12	04821253	1	Weldment, Right Hand Fender Mount
13	06543600	4	Nut, Locking Top Flange .50-13
14	05962200	2	Bolt, Hex .50-13 x 5.00
15	06436400	2	Washer, Flat Steel .511 x 1.441 x .125
16	06542000	6	Nut, Locking Top Flange .38-16
17	00363100	4	Spacer, Caster
18	08553700	2	Bushing, Sleeve .391 x .688 x .52
19	06219900	4	Bolt, Round Head Square Neck .25-20 x .75
20	06443300	2	Washer, Flat Nylon .52 x 1.00 x .08
21	06500012	4	Nut, Locking Top Flange .25-20
22	07400034	6	Screw, Tapping .25-20 x .50 Hex Washer Head Thread
23	06545400	8	Nut, Locking Nylon Flange .31-18
24	03833800	1	Grip, Adhesive (1" x 16" BLK)
25	04423000	1	Expansion Tank Subassembly
26	04082700	1	Grommet, Remote Vent Nitrile
27	03278100	1	Hose, .25 Low-Perm Bulk Gas (7 inches)
28	04745700	1	Assembly, Fuel Vent – Kohler, Briggs and Stratton
29	03278800	2	Clamp, Hose Wire .490/.510 x .116
30	04192700	1	Cupholder, Snap-In, 3.75 OD
31	06218900	2	Bolt, Round Head Square Neck .31-18 x .75
32	04719653	1	Foot Rest
33	03375900	NA	Hose, .188 Low-PERM Bulk Gas (as required)
34	04097700	2	Clamp-Hose, Spring .188
35	05948700	2	Bolt, Hex .38-16 x 1.00
36	06223600	2	Bolt, Round Head Square Neck .38-16 x 1.00
37	51526600	1	Assembly, Engine Wrap
38	04719351	2	Bracket, Engine Wrap Foot
39	06220600	8	Bolt, Round Head Square Neck .25-20 x .50
40	06500710	6	Nut, Center Lock Flange .25-20
41	07533600	2	Bumper, Rubber
42	06530400	2	Nut, Serrated Flange .31-18
43	05501127	2	Bushing, Flange .325 x .499 x .3 x .875
44	06528700	2	Nut, Center Lock Flange .31-18
45	04717151	1	Plate, Back Foot Rest
46	06543500	2	Nut, Locking Top Flange .25-20
47	04739351	1	Guard, Heat Shield (ZT)
48	04739451	2	Strap, Heat Shield (ZT)
49	04739551	1	Guard, Hot Surface (ZT)
50	07506500	1	Grommet, 1.0 I.D. x 1.38 O.D.
51	07500233	2	Cap, Dust

FRAME, HOOD, FENDERS, CASTERS AND TIRES – CARB

Model 915208, 232, 234



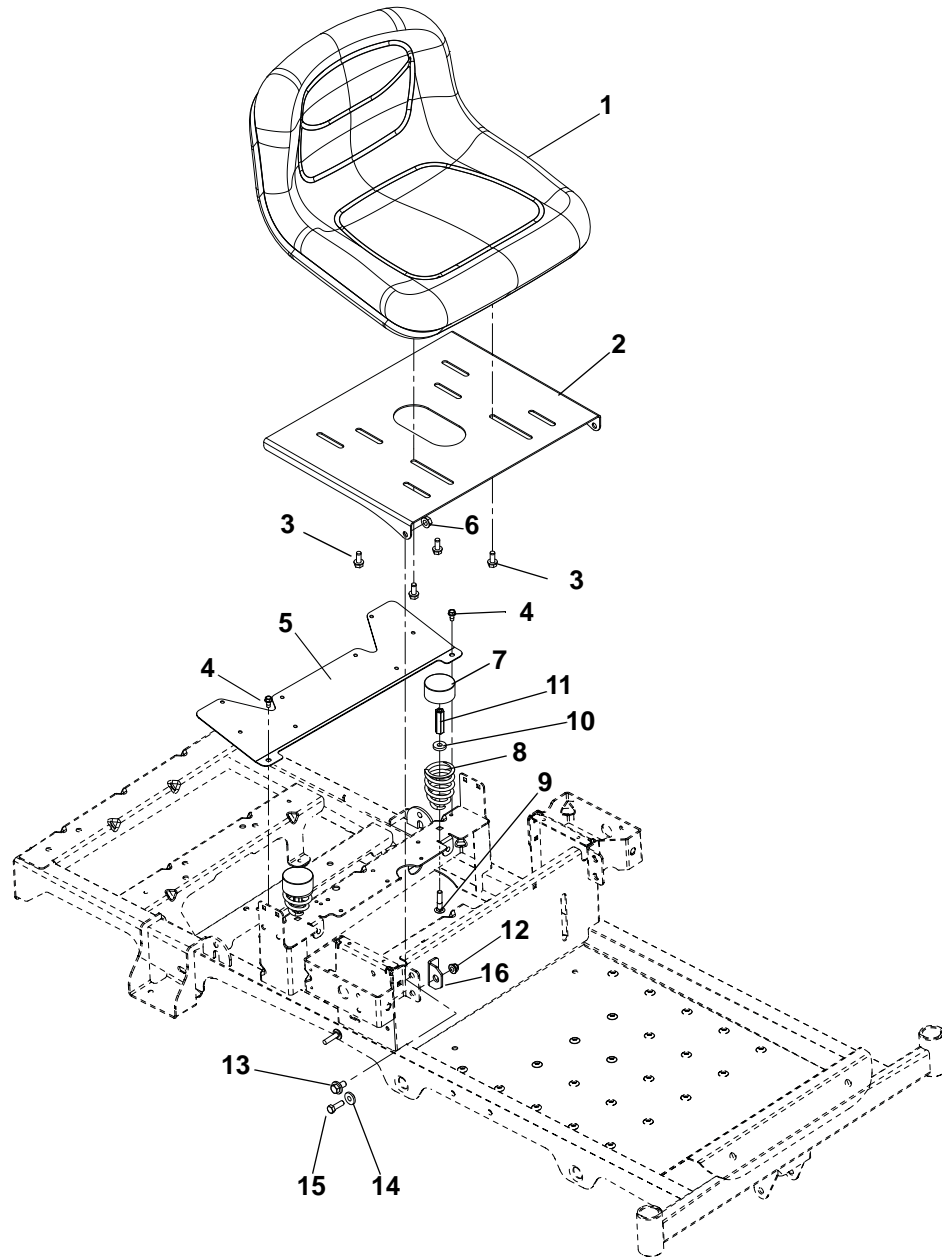
FRAME, HOOD, FENDERS, CASTERS AND TIRES – CARB

Model 915208, 232, 234

Item	Part No.	Qty.	Description
1	51525900	1	Weldment, Frame
2	03768600	1	Fender, Right Hand
3	03768700	1	Fender, Left Hand
4	07500125	6	Rivet, Nylon
5	04717553	2	Plate, Fender
6	03368553	2	Fork, Caster
7	07101127	2	Wheel/Tire Assembly, 11 x 4-5
8	05500934	4	Bushing, Flange 1.00 x 1.25 x 1.50 x 1.50
9	00278500	2	Spacer, Wheel
10	05964400	2	Bolt, Hex .50-13 x 6.50
11	04821253	1	Weldment, Fender Mount Right Hand
12	04717253	1	Weldment, Fender Mount Left Hand
13	06543600	4	Nut, Locking Top Flange .50-13
14	05962200	2	Bolt, Hex .50-13 x 5.00
15	06436400	2	Washer, Flat Steel .511 x 1.441 x .125
16	06542000	6	Nut, Locking Top Flange .38-16
17	00363100	4	Spacer, Caster
18	08553700	2	Bushing, Sleeve .391 x .688 x .52
19	06545400	8	Nut, .31-18 Nyloc Flange
20	06219900	4	Bolt, Round Head Square Neck .25-20 x .75
21	06443300	2	Washer, Flat Nylon .52 x 1.00 x .08
22	06500012	4	Nut, .25-20 Nyloc Flange
23	07400034	6	Screw, Tapping .25-20 x .50 Hex Washer Head Thread
24	03833800	1	Grip, Adhesive (1" x 16" BLK)
25	04423000	1	Expansion Tank Subassembly
26	04082700	1	Grommet, Remote Vent Nitrile
27	04068910	1	Vent, Roll-Over (.25" ID Hose)
28	04082500	1	Carbon Canister, 300CC
29	04086551	1	Bracket, Mount, Canister BBZ
30	04102900	2	Plastic Tie Strap Large
31	04097700	2	Clamp, Hose Spring .188
32	03278800	6	Clamp, Hose Wire .490/.510 x .116
33	04719653	1	Foot Rest
34	04097000	1	Fitting, 3/16 x 1/4 90 Deg Vac
35	03375900	6"	Hose, .188 Low Perm Bulk (915208)
		22"	Hose, .188 Low Perm Bulk (915232, 234)
36	03278100	17"	Hose, .25 Low Perm Bulk Gas
		7"	Hose, .25 Low Perm Bulk Gas
		8"	Hose, .25 Low Perm Bulk Gas
		26"	Hose, .25 Low Perm Bulk Gas
37	04196270	1	Cupholder
38	06218900	2	Bolt, Round Head Square Neck .31-18 x .75
39	05948700	2	Bolt, Hex .38-16 x 1.00
40	06223600	2	Bolt, Round Head Square Neck .38-16 x 1.00
41	51526600	1	Assembly, Engine Wrap
42	04719351	2	Bracket, Engine Wrap Foot
43	06220600	8	Bolt, Round Head Square Neck .25-20 x .50
44	06500710	6	Nut, Center Lock Flange .25-20
45	07533600	2	Bumper, Rubber
46	06530400	2	Nut, Serrated Flange .31-18
47	05501127	2	Bushing, Flange .325 x .499 x .3 x .875
48	06528700	2	Nut, Center Lock Flange .31-18
49	04717151	1	Plate, Back Foot Rest
50	06543500	2	Nut, Locking Top Flange .25-20
51	04739351	1	Guard, Heat Shield (ZT)
52	04739451	2	Strap, Heat Shield (ZT)
53	04739551	1	Guard, Hot Surface (ZT)
54	07500233	2	Cap, Dust
55	07506500	1	Grommet, 1.0 I.D. x 1.38 O.D.

SEAT AND SEAT SUPPORT – 34”

Model 915208, 210, 244



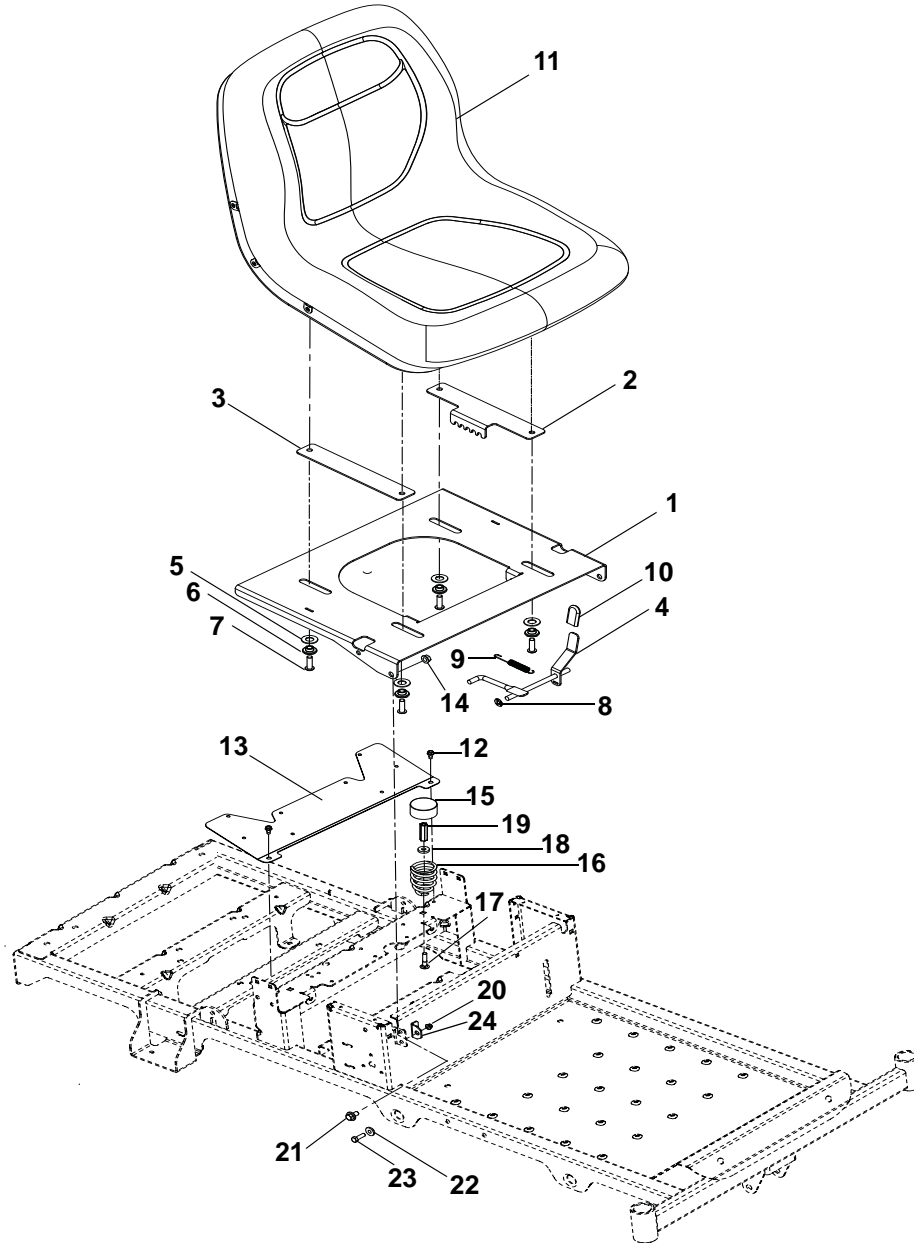
SEAT AND SEAT SUPPORT – 34”

Model 915208, 210, 244

Item	Part No.	Qty.	Description
1	03795800	1	Seat, 13 in Grey
2	03782051	1	Seat Plate
3	05900033	4	Bolt, Hex 5/16-18 x 3/4
4	07412000	2	Screw, Tapping .25-20 x .50 Hex Washer Head Thread
5	03753351	1	Guard, Fan
6	06542000	2	Nut, .38-16 Locking Top Flange
7	00337700	2	Hub Cap
8	08300021	2	Spring, Seat
9	06212100	2	Bolt, Round Head Square Neck .31-18 x 1.50
10	06439100	2	Washer, Flat Steel .328 x .87 x .179
11	06500015	2	Nut, Coupling 5/16-18 x 1.75
12	06545400	2	Nut, 5/16-18 Flange Nyloc
13	07056700	2	Bolt, Shoulder .375-16 x .135
14	01305900	2	Bushing, Flange .325 x .499 x .26 x .88
15	05946900	2	Bolt, Hex .31-18 x 1.00
16	03798751	2	Bracket, Seat Stop

SEAT AND SEAT SUPPORT – 42” AND 50”

Model 915212, 214, 232, 234, 246



SEAT AND SEAT SUPPORT – 42” AND 50”

Model 915212, 214, 232, 234, 246

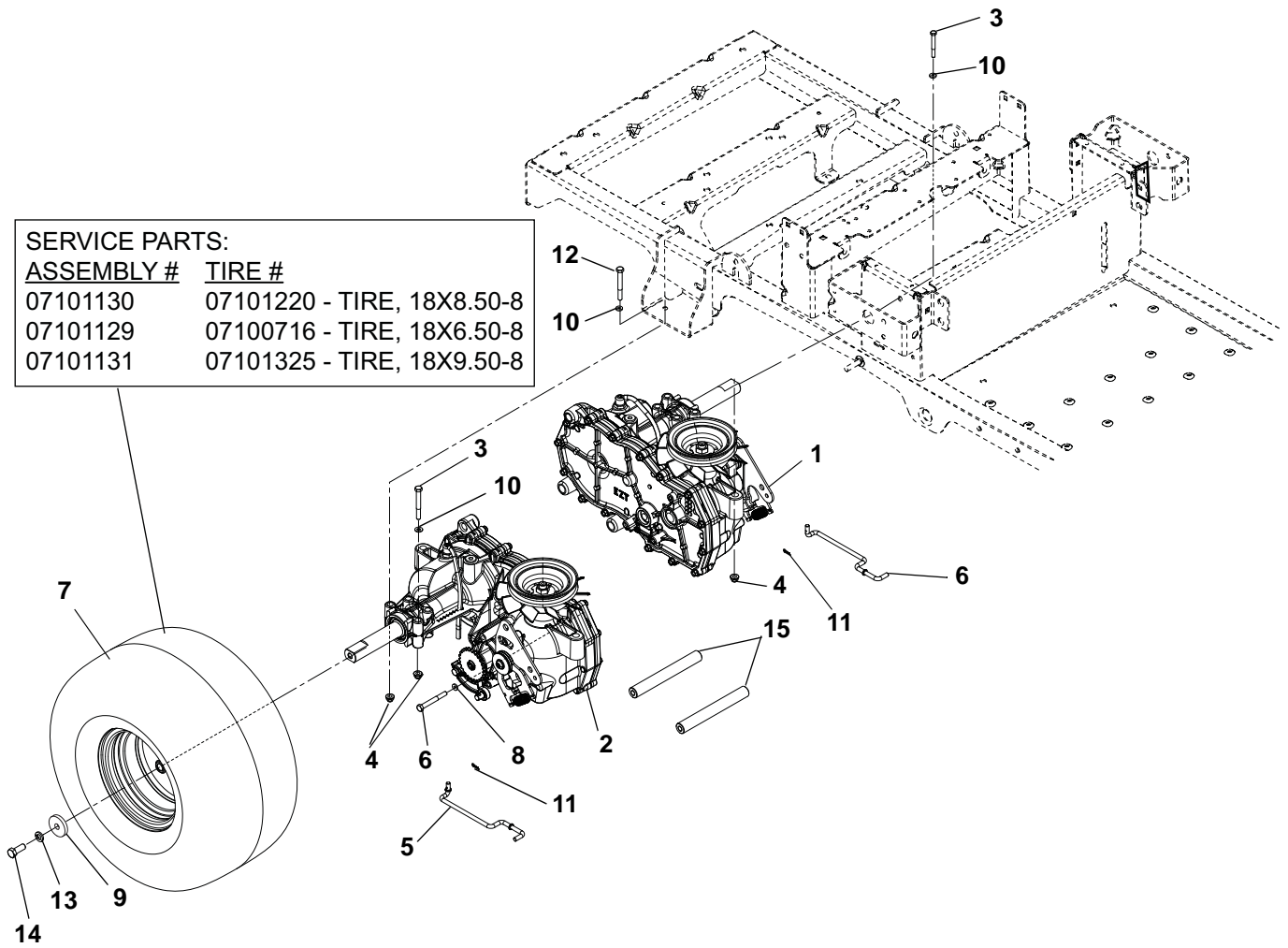
Item	Part No.	Qty.	Description
1	04376251	1	Plate, Adjustable Seat
2	04376951	1	Plate, Adjustable Seat Track
3	04377051	1	Plate Adjustable Seat Slide
4	04377167	1	Weldment, Adjustable Seat Latch
5	06439200	4	Washer, Flat Steel .505 x 1.00 x .062
6	05514800	4	Bushing, Flange .32 x .500 x .344 x .880
7	05901508	4	Screw, Socket Head, Button Head .31-18 x 1.00
8	06514900	1	Push Nut 5/16
9	08321100	1	Spring Tension .043 x .44 x 3.31 Weldment 5.8
10	04396600	1	Grip, Seat Lever, Grey
11	04278000	1	Seat, Milsco XB180 Grey
12	07412000	2	Screw, Tapping .25-20 x .50 Hex Washer Head Thread
13	03753351	1	Guard, Fan
14	06542000	2	Nut, .38-16 Locking Top Flange
15	00337700	2	Hub Cap
16	08300021	2	Spring, Seat
17	06212100	2	Bolt, Round Head Square Neck .31-18 x 1.50
18	06439100	2	Washer, Flat Steel .328 x .87 x .179
19	06500015	2	Nut, Coupling 5/16-18 x 1.75
20	06545400	2	Nut, 5/16-18 Flange Nyloc
21	07056700	2	Bolt, Shoulder .375-16 x .135
22	01305900	2	Bushing, Flange .325 x .499 x .26 x .88
23	05946900	2	Bolt, Hex .31-18 x 1.00
24	03798751	2	Bracket, Seat Stop

TRANSAXLE, DUMP VALVES AND REAR WHEELS

Model All

SERVICE PARTS:

ASSEMBLY #	TIRE #
07101130	07101220 - TIRE, 18X8.50-8
07101129	07100716 - TIRE, 18X6.50-8
07101131	07101325 - TIRE, 18X9.50-8



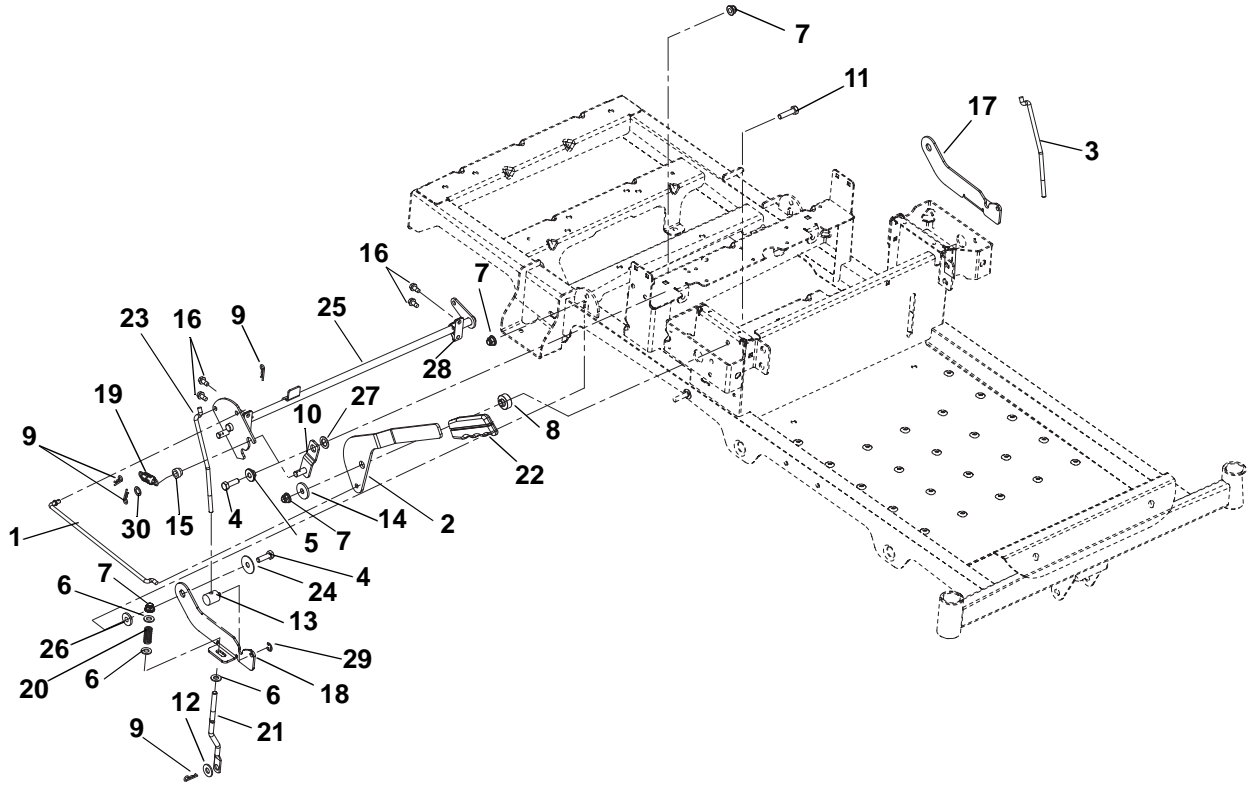
TRANSAXLE, DUMP VALVES AND REAR WHEELS

Model All

Item	Part No.	Qty.	Description
1	03872300	1	Transaxle, Left Hand EZT D-Shaft (915208, 210, 244)
	04382300	1	Transaxle, Left Hand EZT D-Shaft Long (915212, 214, 232, 234, 246)
2	03872400	1	Transaxle, Right Hand EZT D-Shaft (915208, 210, 244)
	04382400	1	Transaxle, Right Hand EZT D-Shaft Long (915212, 214, 232, 234, 246)
3	05963700	4	Bolt, Hex .31-18 x 2.25
4	06545400	8	Nut 5/16-18 Flange Nyloc
5	03762700	1	Dump Valve, Right Hand
6	03762800	1	Dump Valve, Left Hand
7	07101129	2	Tire Assembly 18 x 6.5-8 2 Ply DSHAFT (915208, 210, 244)
	07101130	2	Tire/Wheel Assembly, 18 x 8.5-8 Center (915212, 232, 246)
	07101131	2	Tire/Wheel Assembly, 18 x 9.50-8 Offset (915214, 234)
8	06444000	4	Washer, Flat Steel .406 x 1.00 x .188
9	06400006	2	Washer, Flat Steel .406 x 1.50 x .245
10	06435700	8	Washer, Flat Steel .38 x .875 x .083
11	06701900	2	Pin, Hair, Internal .06 x .18 x .77
12	05960600	4	Bolt, Hex .31-18 x 2.75
13	06308800	2	Washer, Locking .38 x .094 Regular
14	05900013	2	Bolt, Hex .38-16 x 1.00 YWZC EP30
15	03762067	2	Shaft, Transaxle Brace

PARKING BRAKE

Model All



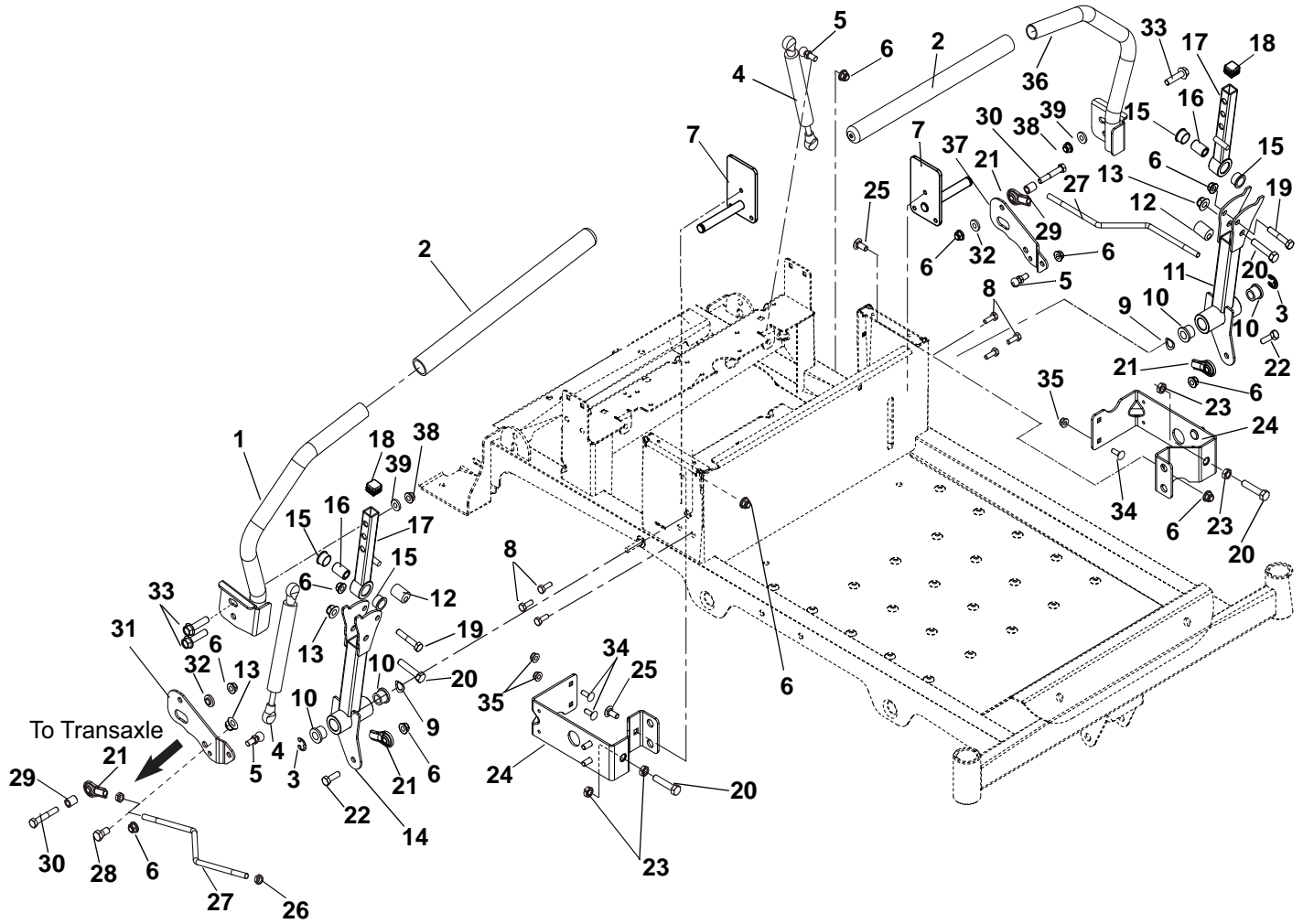
PARKING BRAKE

Model All

Item	Part No.	Qty.	Description
1	03759400	1	Link, Brake Handle
2	03759167	1	Handle, Parking Brake
3	03823300	1	Link, Neutral Left Hand
4	05946900	3	Bolt, Hex .31-18 x 1.00
5	05514800	1	Bushing, Flange .312 x .500 x .344 x .880
6	06437200	6	Washer, Flat Steel .344 x .688 x .065
7	06545400	6	Nut, Flange Nyloc 5/16-18
8	03769400	1	Spacer, Brake Handle
9	06713500	5	Pin, Hair Internal .08 x .18 x 1.18
10	03759200	1	Weldment, Detent Arm
11	05947500	1	Bolt, Hex .31-18 x 1.25
12	06435700	2	Washer, Flat Steel .38 x .875 x .083
13	03764800	2	Trunnion, 1/4-20
14	06446300	1	Washer, Flat Steel .344 x 1.125 x .135
15	03764900	1	Roller
16	07400034	4	Screw, Tapping .25-20 x .50 Hex Washer Head
17	03759067	1	Latch, Left Hand Neutral
18	03758967	1	Latch, Right Hand Neutral
19	08326700	1	Spring, Tension .072 x .565 x 1.87
20	08300028	2	Spring, Compression
21	03759667	2	Link, Brake Cog
22	03826900	1	Grip, Parking Brake
23	03759500	1	Link, Neutral Right Hand
24	06446900	2	Washer, Flat Steel .347 x 1.254 x .048
25	03761167	1	Weldment, Brake Shaft
26	01305900	2	Bushing, Flange .325 x .499 x .26 x .88
27	06441100	1	Washer, Flat Steel .52 x .827 x .062
28	03757501	2	Bushing, .50 Clamp Block Molded
29	05700125	2	Ring, Retaining, External .250 x .025
30	06400840	1	Washer, Steel .385 x .745 x .030

STEERING CONTROLS

Model All



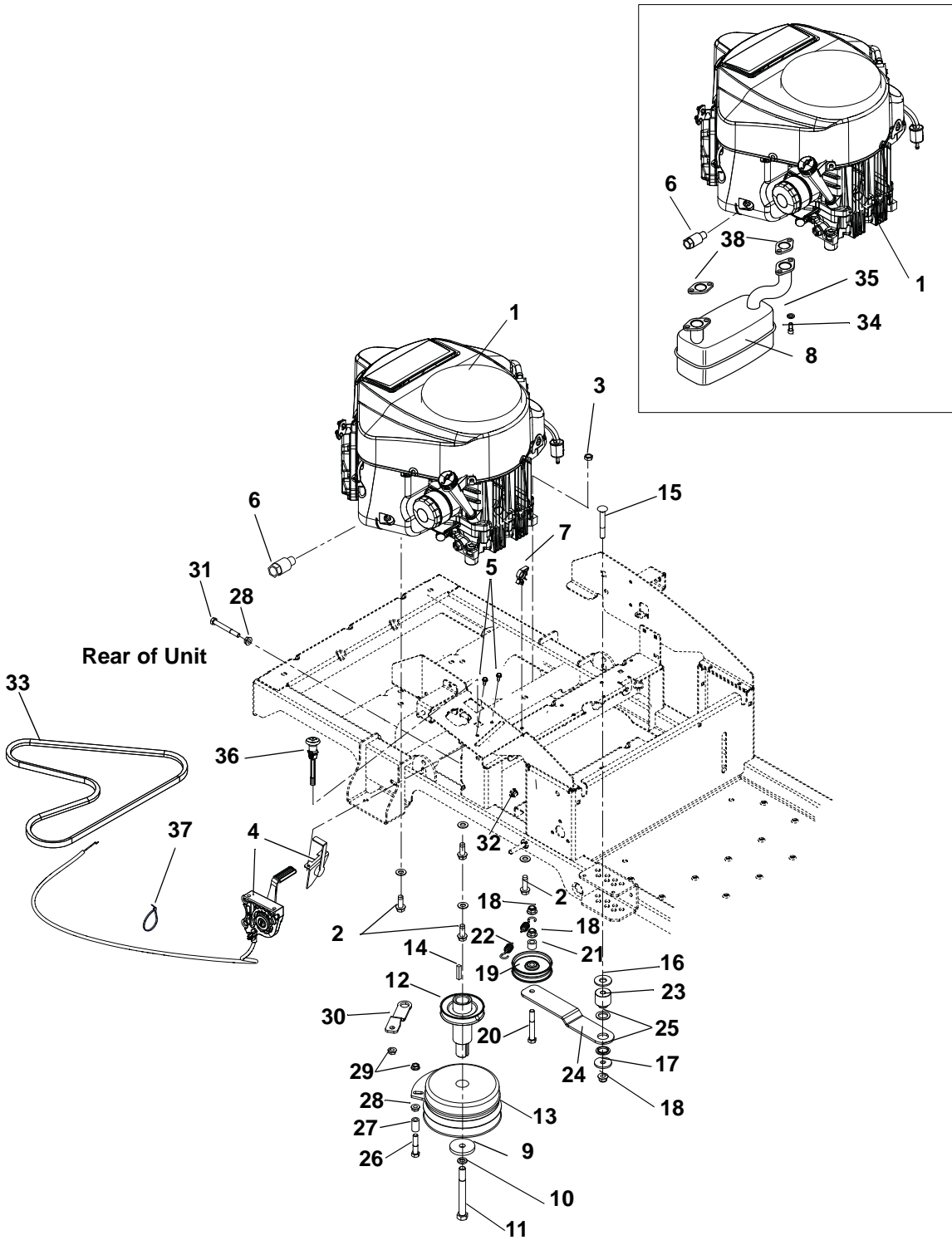
STEERING CONTROLS

Model All

Item	Part No.	Qty.	Description
1	04193051	1	Weldment, Steering Handle Right Hand
2	04257400	2	Grip, Handlebar 15" Foam
3	05710200	2	Ring, Retaining External .438 x 1.00 x 0.83
4	03943800	2	Damper
5	03652200	4	Stud, Ball
6	06545400	12	Nut, .31-18 Flange
7	04197651	2	Weldment, Steering Shaft
8	07400034	6	Screw, Tapping .25-20 x .50 Hex Washer Head
9	06400005	2	Washer, Wave
10	05511000	4	Bushing, Flanged
11	04192851	1	Weldment, Lower Control Left Hand (Black)
12	05500932	2	Bushing, Eccentric
13	06545500	4	Nut, .38-16 Nyloc Flange
14	04199451	1	Weldment, Lower Control Right Hand (Black)
15	05501017	4	Bushing, Flanged
16	04193500	2	Spacer, .375 x .625 x .970
17	04192951	2	Weldment, Upper Control Arm
18	07500131	2	Cap Plug, Square
19	05957400	2	Bolt, Hex .31-18 x 1.75
20	05974000	4	Bolt, Hex .375-16 x 1.75
21	03787100	4	Alignaball, 5/16 RH Thread
22	05946900	2	Bolt, Hex .31-18 x 1.00
23	06535900	4	Nut, Hex Jam .375-16
24	03956251	2	Bracket, Speed Adjustment/Seat Pivot
25	06220800	2	Bolt, Round Head Square Neck .31-18 x .75
26	06536700	4	Nut, Jam, .31-24
27	04197300	2	Wireform, Steering Link
28	05959400	2	Bolt, Hex .38-16 x .75
29	04208000	2	Spacer, .328 x .500 x .625
30	05957200	2	Bolt, Hex .31-18 x 2.00
31	03759351	1	Plate, Dampener Right Hand
32	04147200	2	Bushing, Flanged
33	07050000	4	Bolt, Serrated Hex Flange Washer Head .375-16 x 1.25
34	06219900	4	Bolt, Round Head Square Neck .25-20 x .75
35	06500012	4	Nut, Locking Nylon Flange .25-20
36	04199551	1	Weldment, Steering Handle Left Hand
37	03766051	1	Plate, Damper Left Hand
38	06537200	4	Nut, Locking Center Jam .375-16
39	06436200	4	Washer, Flat Steel .406 x .812 x .065

ENGINE, EXHAUST, BELTS AND IDLERS

Model All



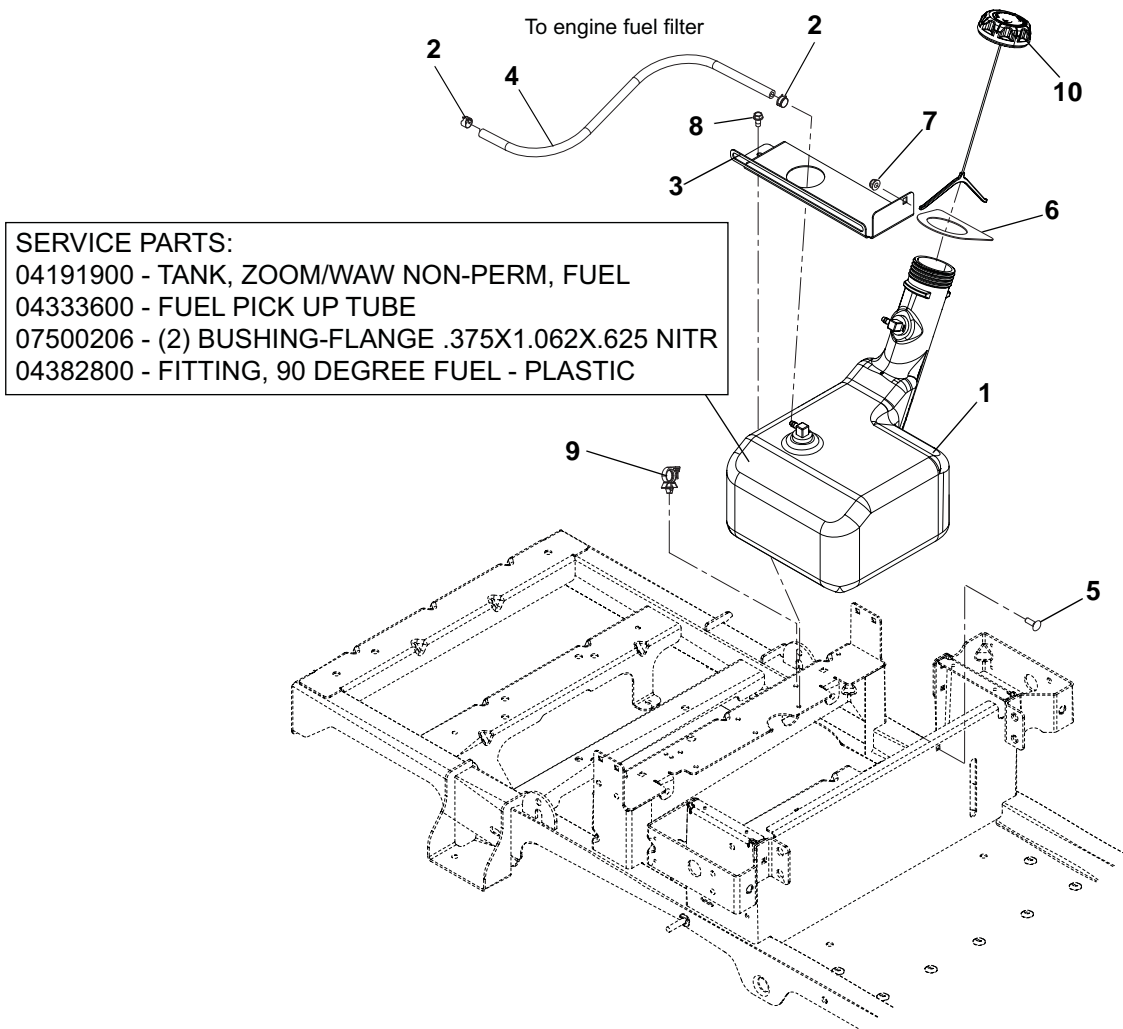
ENGINE, EXHAUST, BELTS AND IDLERS

Model All

Item	Part No.	Qty.	Description
1	08201125	1	Engine, Kohler Twin 19 HP (915244, 246)
	08201126	1	Engine, Kohler Twin 21 HP (915208, 210)
	08201134	1	Engine, Kohler Twin 22 HP (915212, 232)
	08201136	1	Engine, Kohler Twin 23 HP (915214, 234)
2	07414700	4	Screw, Tapping .38-16 x 1.25 Hex Washer Head
3	06537200	1	Nut, Locking Jam .375-16
4	06900416	1	Cable, Throttle
5	07415800	2	Screw, Tapping 10-24 x .50 Hex Washer Head
6	03943600	1	Oil Drain
7	00390100	3	Wire Clip (for .25" hole)
8	04749600	1	Muffler, Kohler Twin
9	06443600	1	Washer, Flat Steel .469 x 2.00 x .25
10	06309300	1	Washer, Locking .44 x .109 Regular
11	05966700	1	Bolt, Hex .44-20 x 4.50 Grade 8
12	07338600	1	Weldment, Crankshaft Extension
13	03972700	1	Clutch, 105 FT*LB MONO Pole
14	06603400	1	Key, Square .25 x 1.25 x .25 SAE 8630 or SAE 1035
15	06225400	1	Bolt, Round Head Square Neck .38-16 x 2.75
16	06442000	1	Washer, Flat Steel .563 x 1.38 x .109
17	06442400	2	Washer, Flat Steel .406 x 1.375 x .135
18	06545500	3	Nut, Locking Nylon Flange .38-16
19	07300221	1	Pulley, Engine Clutch
20	05961400	1	Bolt, Hex .38-16 x 2.75
21	08553700	1	Bushing, Sleeve .391 x .688 x .52
22	08300512	1	Spring, Extension
23	03961100	1	Spacer, Ground Drive Idler
24	03961067	1	Idler Arm, Ground Drive
25	03960700	1	Bushing, Idler Arm
26	05901418	1	Screw, Cap .31-18 x 1.75
27	03980200	1	Spacer, Rubber 5/16 ID x 1.0
28	06530400	2	Nut, Spin Lock Flange .312-18
29	06543100	2	Nut, Locking Top Flange .31-18
30	03956751	1	Bracket, Clutch Stop
31	05960600	1	Bolt, Hex .31-18 x 2.75
32	06545400	1	Nut, Locking Nylon Flange .31-18
33	07200010	1	V-Belt, HA-RAW Edge Laminated
34	05901839	4	Cap Screw .31-18 x .88 S/HD
35	06308600	4	Washer, Locking .31 x .078 Regular
36	06900408	1	Cable, Choke (Snap-In)
37	07517300	1	Cable Tie
38	05600505	1	Gasket, Muffler Kohler Twin (915208, 210, 214, 234)

FUEL TANK

Model All



SERVICE PARTS:
 04191900 - TANK, ZOOM/WAW NON-PERM, FUEL
 04333600 - FUEL PICK UP TUBE
 07500206 - (2) BUSHING-FLANGE .375X1.062X.625 NITR
 04382800 - FITTING, 90 DEGREE FUEL - PLASTIC

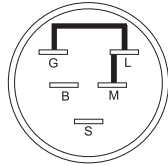
Item	Part No.	Qty.	Description
1	04422900	1	Fuel Tank Subassembly
2	03278800	2	Clamp, Fuel Line
3	03771451	1	Bracket, Tank Strap
4	03278100	NA	Hose, .25 Low Perm Gas (as required)
5	06219900	1	Bolt, Round Head Square Neck .25-20 x .75
6	03795700	1	Seal, Tank Neck
7	06500012	1	Nut, .25-20 Nyloc Flange
8	07400034	1	Screw, Tapping .25-20 x .50 Hex Washer Head
9	00390100	1	Wire Clip
10	04589200	1	Cap, Fuel Vent-In 2.25"

CONTINUITY DIAGRAM

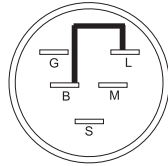
Model All

The diagrams below show the various states of connection for electrical components.
The solid lines on switches show continuity.
NOTE: All switches are viewed from the rear.

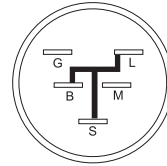
Key Switch (01588300)



OFF

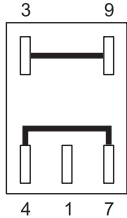


RUN

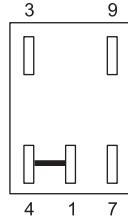


START

PTO Switch (04399600)

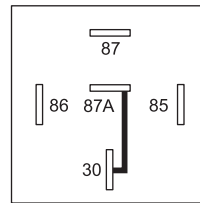


DISENGAGED
(down position)

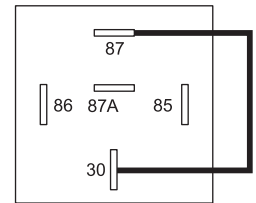


ENGAGED
(up position)

Relay (03042800)

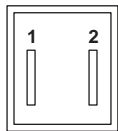


NOT ENERGIZED

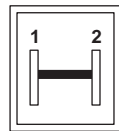


ENERGIZED

Seat Switch (03654200)

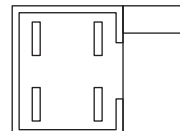


OPERATOR
OFF SEAT

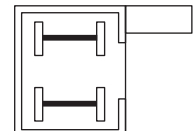


OPERATOR
ON SEAT

Park Brake Switch (03606600)

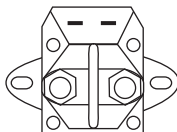


BUTTON OUT

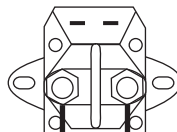


BUTTON IN

Solenoid (00696900)



NOT ENERGIZED

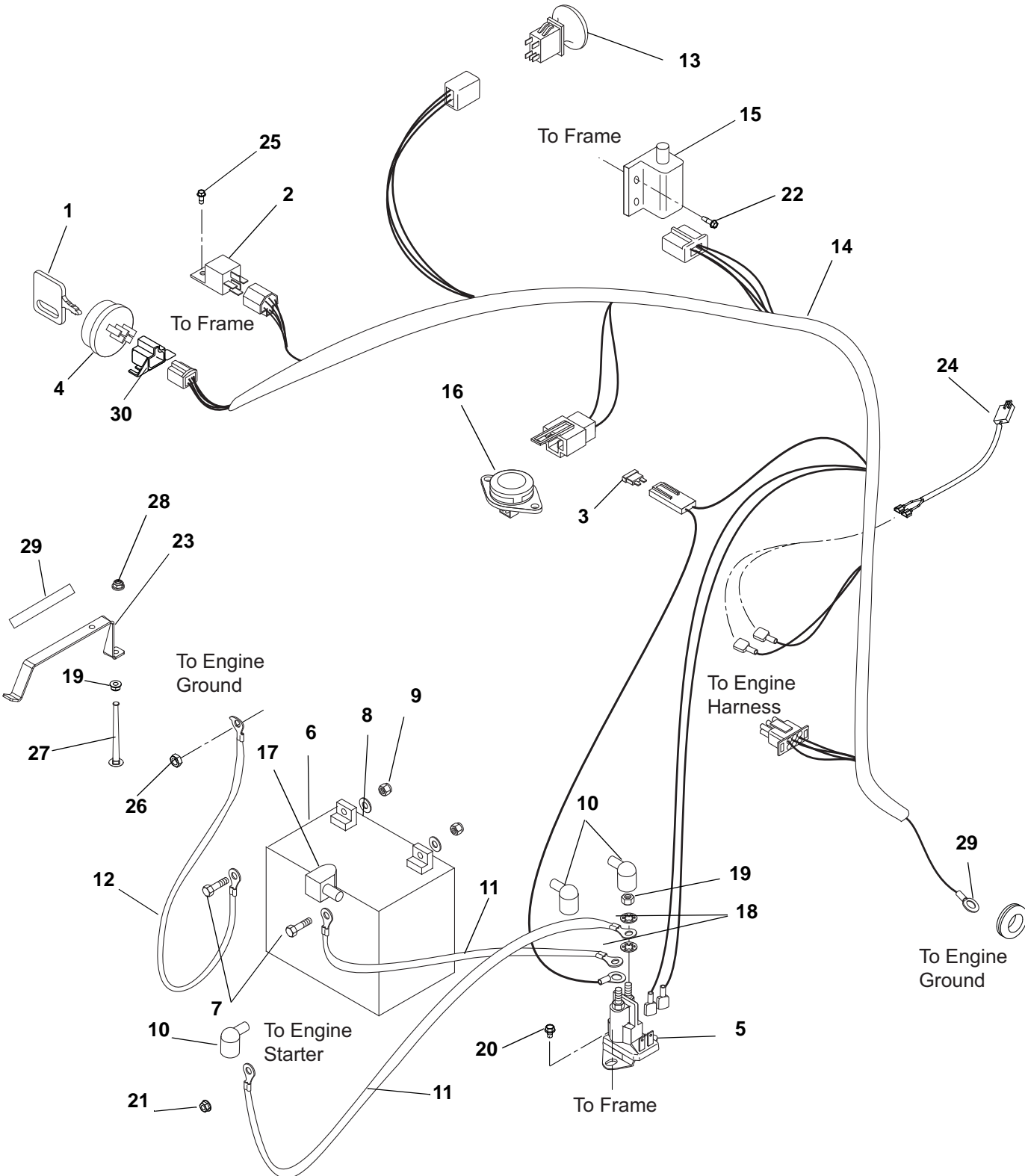


ENERGIZED

PE0771

ELECTRICAL SYSTEM

Model All



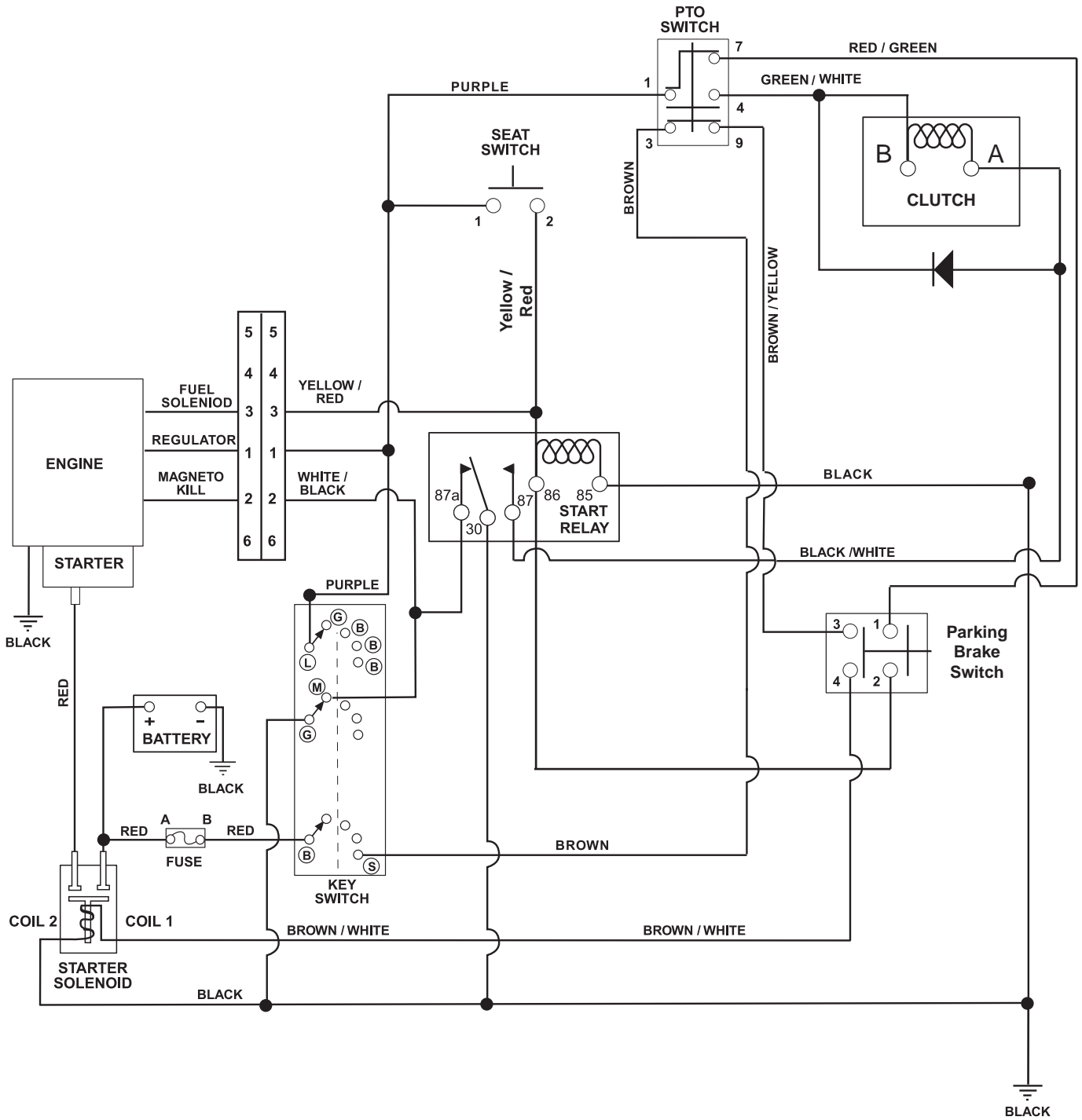
ELECTRICAL SYSTEM

Model All

Item	Part No.	Qty.	Description
1	03927000	1	Key (915212, 214, 232, 234, 244, 246)
	02460700	1	Key- with Cap (915208, 210)
2	03042800	1	Relay
3	09351100	1	Fuse, 30 AMP
4	03290500	1	Key Switch with Key (915212, 214, 232, 234, 244, 246)
	01588300	1	Key Switch (915208, 210)
5	04781960	1	Solenoid
6	04738800	1	Battery, 12V 12A (Can be replaced with U1 190 or larger)
7	05946800	2	Bolt, Hex .25-20 x .75
8	06437300	2	Washer, Flat Steel .281 x .62 x .065
9	06509200	2	Nut, KEPS .250-20
10	07533200	3	Boot, Eyelet Terminal
11	04787400	2	Cable, POS
12	04249900	1	Ground Cable
13	04399600	1	Switch, Clutch With Retainer
14	04782000	1	Harness, Wiring ZT
15	03606600	1	Switch, Double Pole N.O. / N.O.
16	03654200	1	Switch, Snap Mounting (N.O.)
17	07505700	1	Insulator
18	06306800	2	Washer, Locking .31
19	06529800	2	Nut-Hex M6x1.0
20	07411600	2	Screw, Tapping .250-20 x .37 Hex Washer Head
21	06543500	1	Nut, Locking Top Flange .25-20
22	07400038	2	Screw, 12-14 x .75 HX
23	04385351	1	Hold Down, Battery
24	03972600	1	Harness, Clutch
25	07415800	1	Screw, Tapping 10-24 x .50 HWH TR YWZC (Lubricated or Waxed)
26	06537200	1	Nut, Locking Center Jam .375-16 (915208, 210)
27	06200211	1	Bolt, Round Head Square Neck .25-20 x 4.50
28	06500012	1	Nut, Locking Nylon Flange .25-20
29	07517300	2	Cable Tie
30	04960300	1	Wire Harness, Key Switch ADAPT (915208, 210)

WIRING DIAGRAM

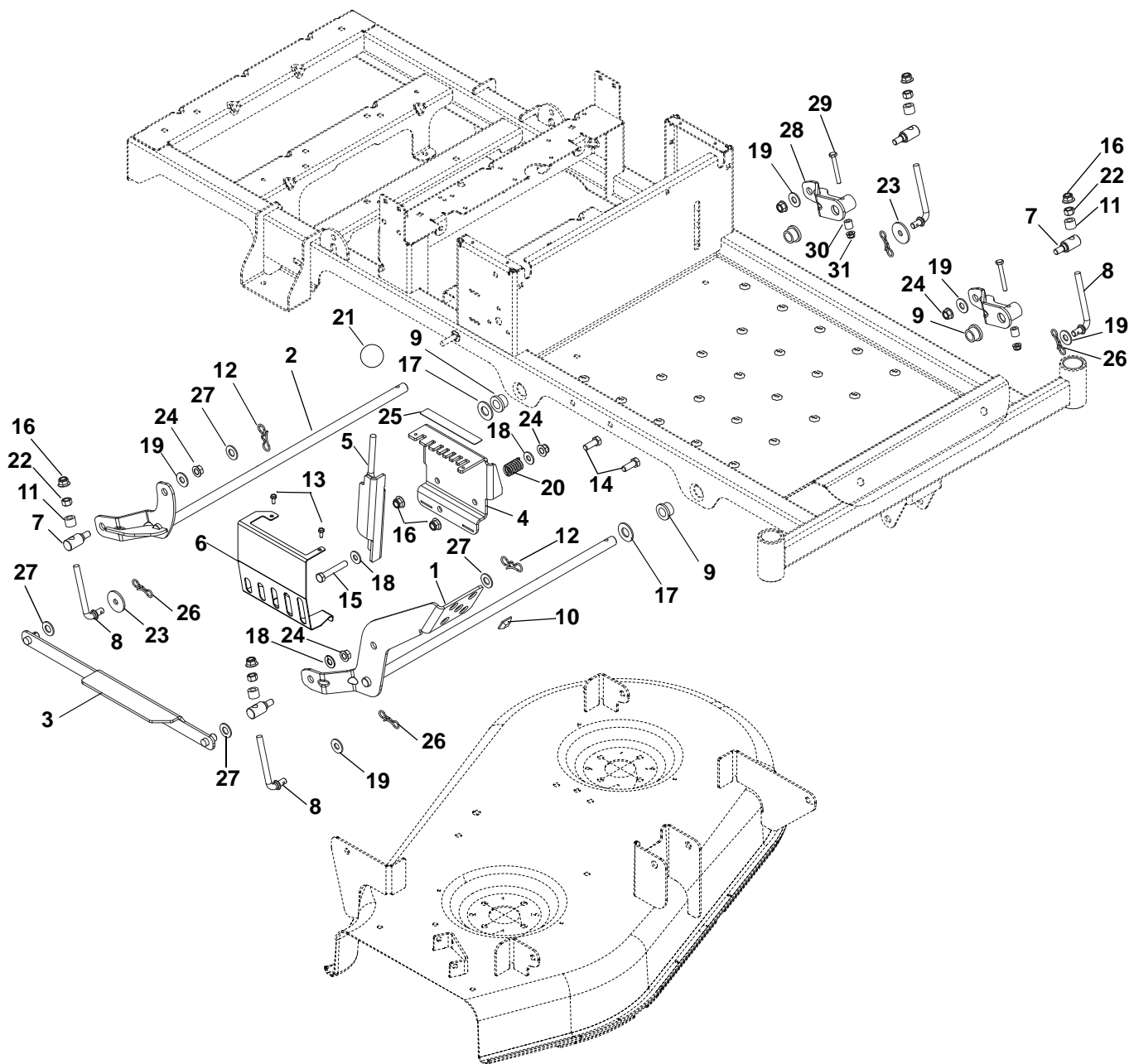
Model All



NOTES

MOWER DECK LIFT

Model All



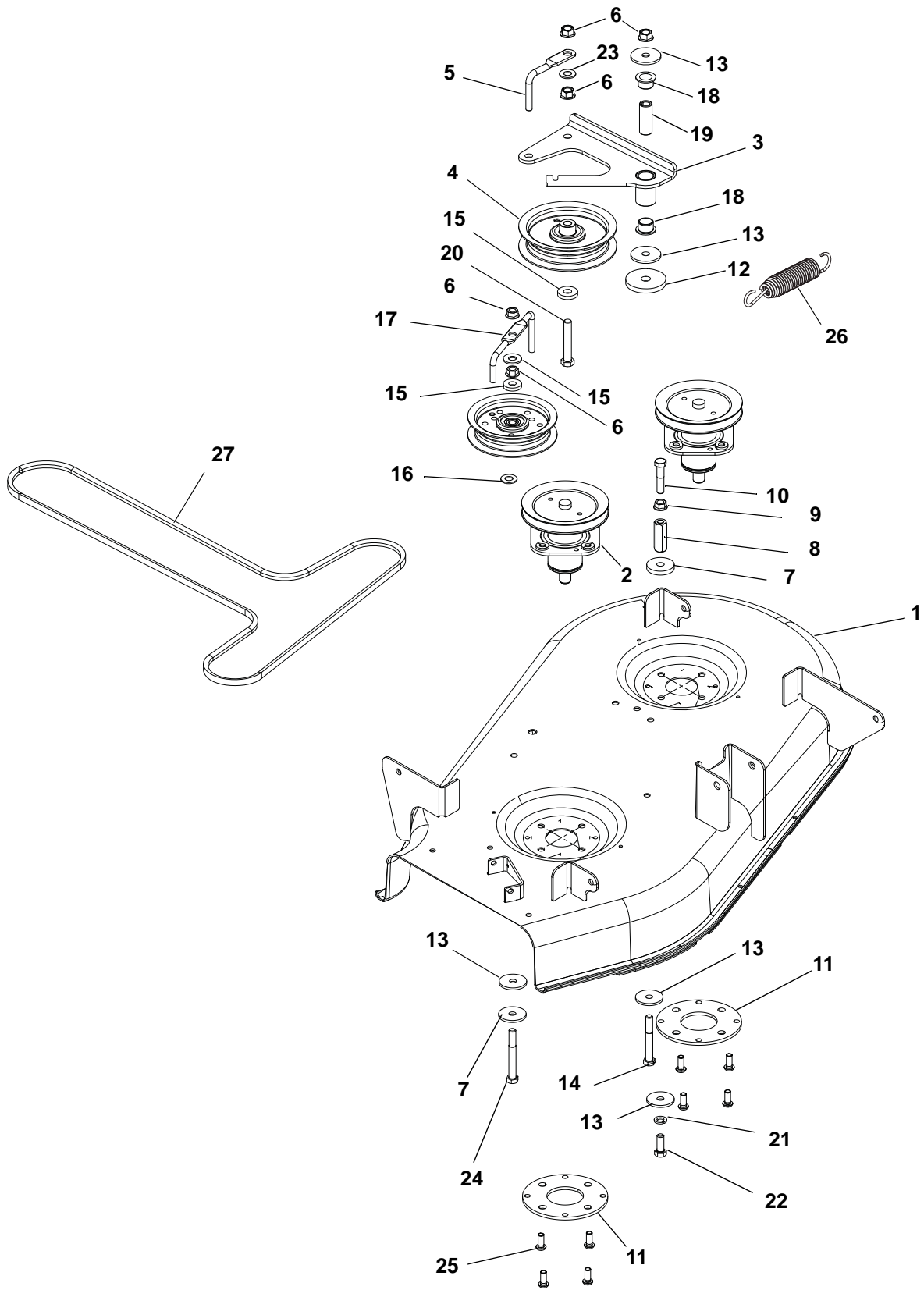
MOWER DECK LIFT

Model All

Item	Part No.	Qty.	Description
1	04434567	1	Weldment, Footpedal
2	04434467	1	Weldment, Rear Deck Lift
3	04377367	1	Weldment, Lift/HOC Link
4	04377951	1	Plate, Height Adjustment
5	04391567	1	Weldment, Height of Cut
6	04723751	1	Guard, Deck HOC
7	04377867	4	Trunion, Deck Adjuster
8	04377767	4	Wireform, Deck Adjustment
9	05519100	4	Bushing, Flange .629 x .879 x .469 x 1.25
10	07525100	1	Stop
11	08553700	4	Bushing, Sleeve .391 x .688 x .52
12	06700201	2	Pin, Bow Tie Locking Cotter .091 x 1.875
13	07415800	2	Screw, Tapping, Hex Washer Head Rolling 10-24 x .50
14	05948700	2	Bolt, Hex .38-16 x 1.00
15	05962900	1	Bolt, Hex .38-16 x 2.25
16	06545500	7	Nut, Locking Nylon Flange .38-16
17	06442800	2	Washer, Flat Steel .656 x 1.31 x .095
18	06435700	3	Washer, Flat Steel .38 x .875 x .083
19	06436200	5	Washer, Flat Steel .438 x 1.00 x .083
20	08335700	1	Spring, Compression .125 x .781 x 1.25
21	07533500	1	Knob, Ball – Black 1.47" .375-16
22	06529400	4	Nut, Hex .38-16
23	06443400	2	Washer, Flat Steel .380 x 1.50 x .125
24	06542000	4	Nut, Locking Top Flange .38-16
25	07800334	1	Decal, Height of Cut
26	06700206	4	Pin, Bowtie Locking
27	06443300	4	Washer, Flat Nylon .518 x 1.00 x .08
28	04434667	2	Weldment, Deck Lift Arm
29	05967100	2	Bolt, Hex .25-20 x 2.00
30	05501112	2	Bushing, Sleeve .265 x .500 x .500
31	06500012	2	Nut, Locking Nylon Flange .25-20

MOWER DECK, BELT AND IDLERS – 34”

Model 915208, 210, 244



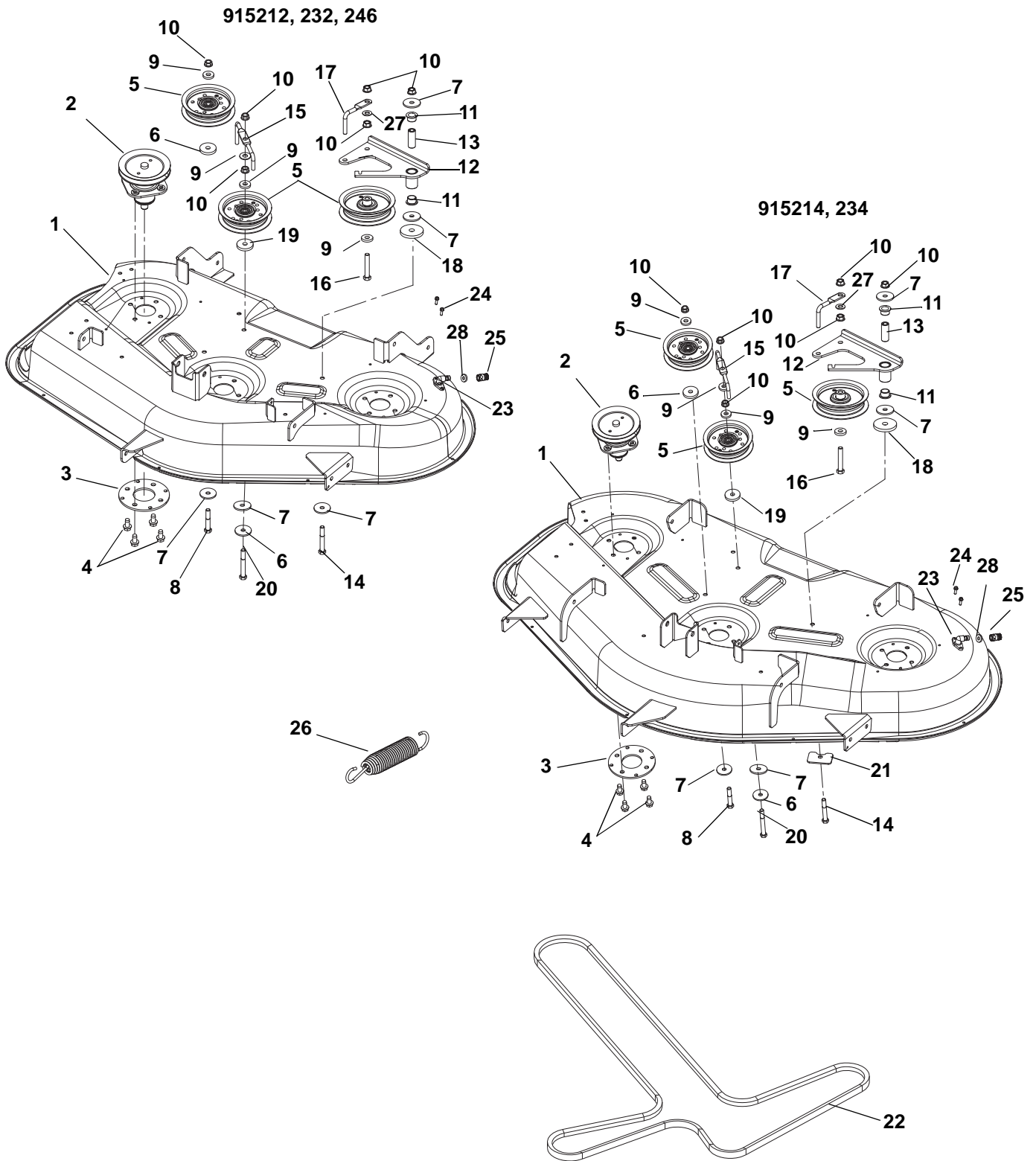
MOWER DECK, BELT AND IDLERS – 34”

Model 915208, 210, 244

Item	Part No.	Qty.	Description
1	51523100	1	Kit, Gravely 34” Deck with Decals
2	51519500	2	Assembly, Spindle
3	04430867	1	Weldment, Idler Arm
4	07300039	2	Assembly, Idler 4”
5	03828853	1	Wireform, Belt Finger
6	06542000	5	Nut, Locking Top Flange .38-16
7	06400006	2	Washer, Flat Steel .406 x 1.50 x .245
8	06533500	1	Nut, Coupling .375-16 x 1.75
9	06534900	1	Nut, Spin Lock, Flange .375-16
10	05958500	1	Bolt, Hex .38-16 x 1.75
11	03839053	2	Plate, REINF, Spindle
12	06443600	1	Washer, Flat Steel .469 x 2.00 x .25
13	06443400	5	Washer, Flat Steel .380 x 1.50 x .125
14	05957800	1	Bolt, Hex .38-16 x 3.00
15	06444000	3	Washer, Flat Steel .406 x 1.00 x .188
16	06435900	1	Washer, Flat Steel .438 x 1.00 x .083
17	03974153	1	Belt Finger
18	05500907	2	Bushing, Flange, .625 x .750 x .500 x 1.00
19	03763400	1	Spacer, .375ID x .625D x 1.66 Promaster
20	05962900	1	Bolt, Hex .38-16 x 2.25
21	06308800	1	Washer, Locking .38 x .094 Regular
22	05948700	1	Bolt, Hex .38-16 x 1.00
23	06436200	1	Washer, Flat Steel .406 x .812 x .065
24	05961400	1	Bolt, Hex .38-16 x 2.75
25	07415400	8	Screw, Tapping .38-16 x .75 Hex Washer Head Thread Rolling
26	08320300	1	Spring, Tension .135 x .98 x 6.0
27	07200116	1	V-Belt, HA-Wrapped Clutching

MOWER DECK, BELT AND IDLERS – 42” AND 50”

Model 915212, 214, 232, 234, 246



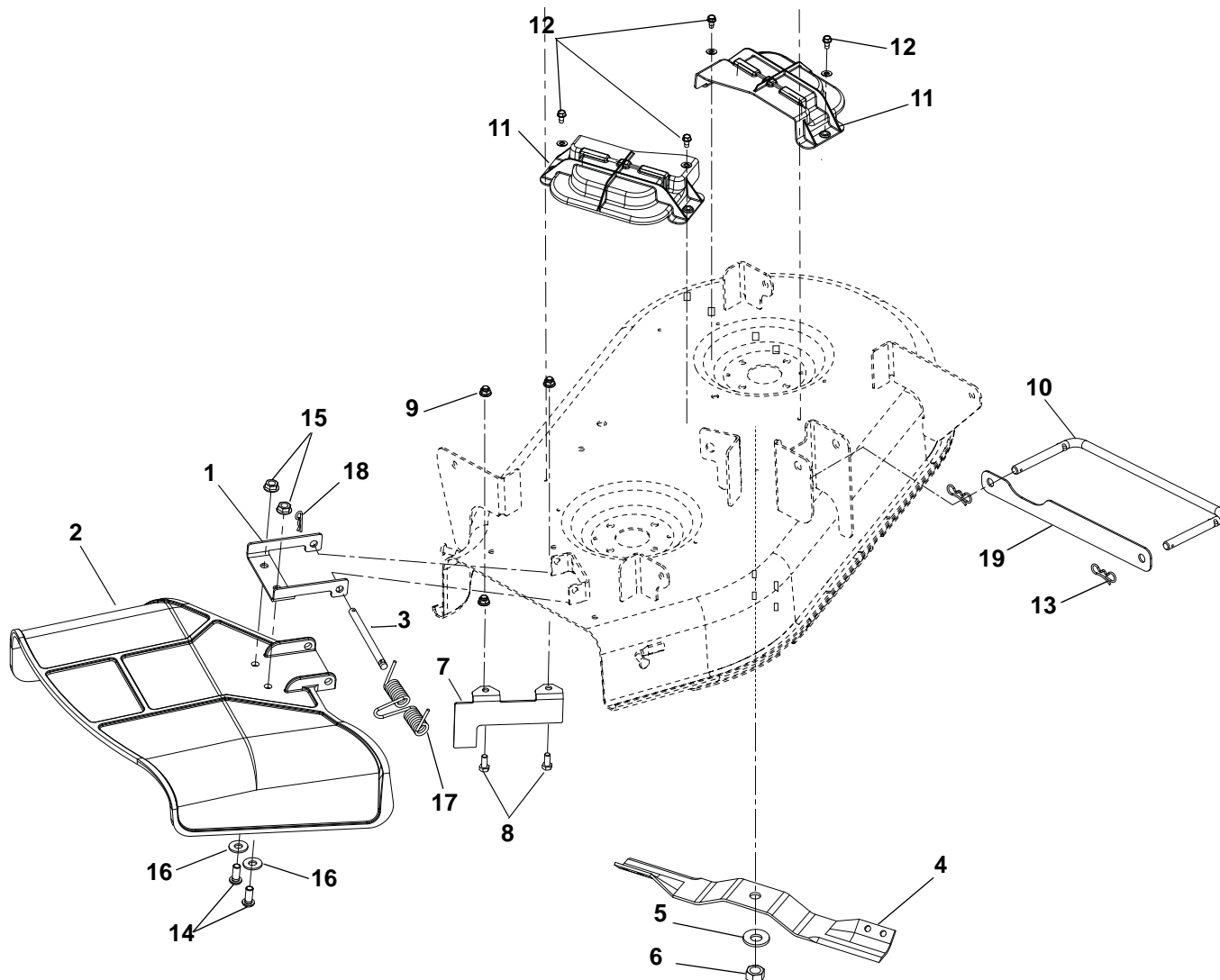
MOWER DECK, BELT AND IDLERS – 42” AND 50”

Model 915212, 214, 232, 234, 246

Item	Part No.	Qty.	Description
1	51523800	1	Kit, Gravely 42” Deck with Decals (915212, 232, 246)
	51523900	1	Kit, Gravely 50” Deck with Decals (915214, 234)
2	51520900	3	Assembly, Spindle (915212, 232, 246)
	51519500	3	Assembly, Spindle (915214, 234)
3	03839053	3	Plate, Spindle
4	07415400	12	Screw, Tapping .38-16 x .75 Hex Washer Head
5	07300039	3	Assembly, Idler 4"
6	06400006	2	Washer, Flat Steel .406 x 1.50 x .245
7	06443400	5	Washer, Flat Steel .380 x 1.50 x .125 (915212, 232, 246)
	06443400	4	Washer, Flat Steel .380 x 1.50 x .125 (915214, 234)
8	05962900	1	Bolt, Hex .38-16 x 2.25
9	06444000	4	Washer, Flat Steel .406 x 1.00 x .188
10	06542000	5	Nut, Locking Top Flange .38-16
11	05500907	2	Bushing, Flange, .625 x .750 x .500 x 1.00
12	04430867	1	Idler Arm
13	03763400	1	Spacer, .375ID x .625 OD x 1.66
14	05957800	1	Bolt, Hex .38-16 x 3.00
15	03974153	1	Belt Finger
16	05962900	1	Bolt, Hex .38-16 x 2.25
17	03828853	1	Wireform Belt Finger
18	06443600	1	Washer, Flat Steel .469 x 2.00 x .25
19	06435900	1	Washer, Flat Steel .438 x 1.00 x .083
20	05961400	1	Bolt, Hex .38-16 x 2.75
21	04061053	1	Plate, Deck (915214, 234)
22	07200523	1	V-Belt, 4L Wrapped (915212, 232, 246)
	07200524	1	V-Belt, 4L Wrapped (915214, 234)
23	04428900	1	Assy, Washout Port W/O Ring
24	07400103	2	Screw, Tapping .25-20 x .62 Hex Washer Head Thread Rolling
25	04396500	1	Coupling, Quick Disconnect
26	08320300	1	Extension Spring .135 x .98 x 6.0
27	06436200	1	Washer, Flat Steel .406 x .812 x .065
28	05600513	1	O-Ring .362 X .103 X .568

BELT COVERS AND BLADES – 34”

Model 915208, 210, 244

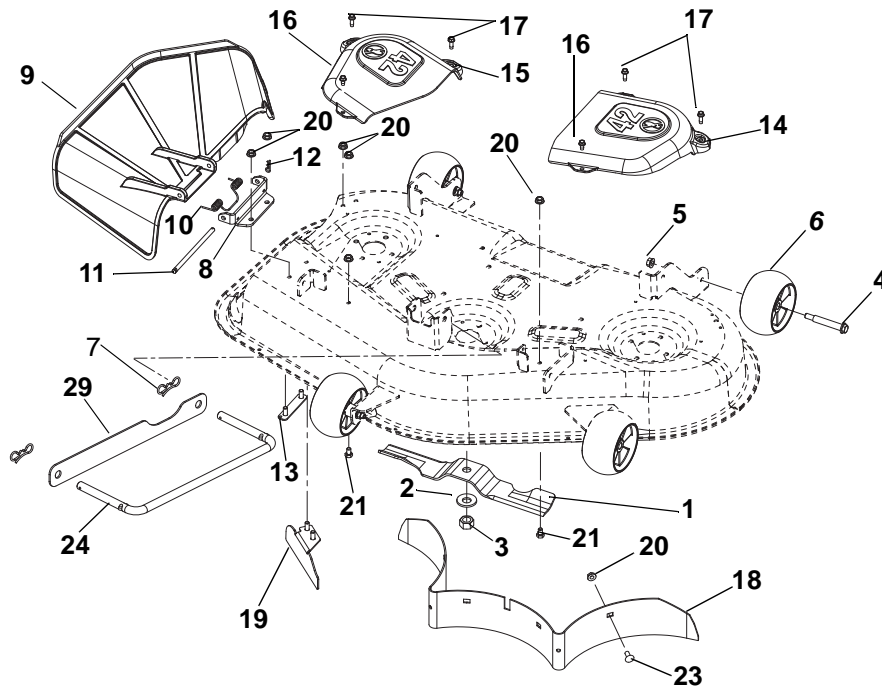


Item	Part No.	Qty.	Description
1	00662653	1	Chute Reinforcement
2	03994300	1	Molded Chute
3	06800002	1	Pin, 5/16 x 3.88"
4	03971900	2	Blade, Mower 17.35
5	06445700	2	Washer, Beveled .63 x 1.625 x .14
6	06500630	2	Nut, Hex .62-18
7	03779253	1	Bracket, Baffle Discharge 34"
8	05947000	2	Bolt, Hex .31-18 x .75
9	06545400	2	Nut, .31-18 Nyloc Flange
10	04377667	1	Wireform, Drag Link
11	04323800	2	Molded Cover, Belt
12	07400034	4	Screw, Tapping .25-20 x .50 Hex Washer Head
13	06700201	2	Pin, Bow Tie Locking Cotter .091 x 1.875
14	05920900	2	Screw, .31-18 x .75
15	06543100	2	Nut, Locking Top Flange .31-18
16	06435700	2	Washer, Flat Steel .38 x .875 x .083
17	01258100	1	Spring, Torsion
18	06713500	1	Pin, Hair .08 x .18 x 1.18
19	04424951	1	Strap, Drag Link

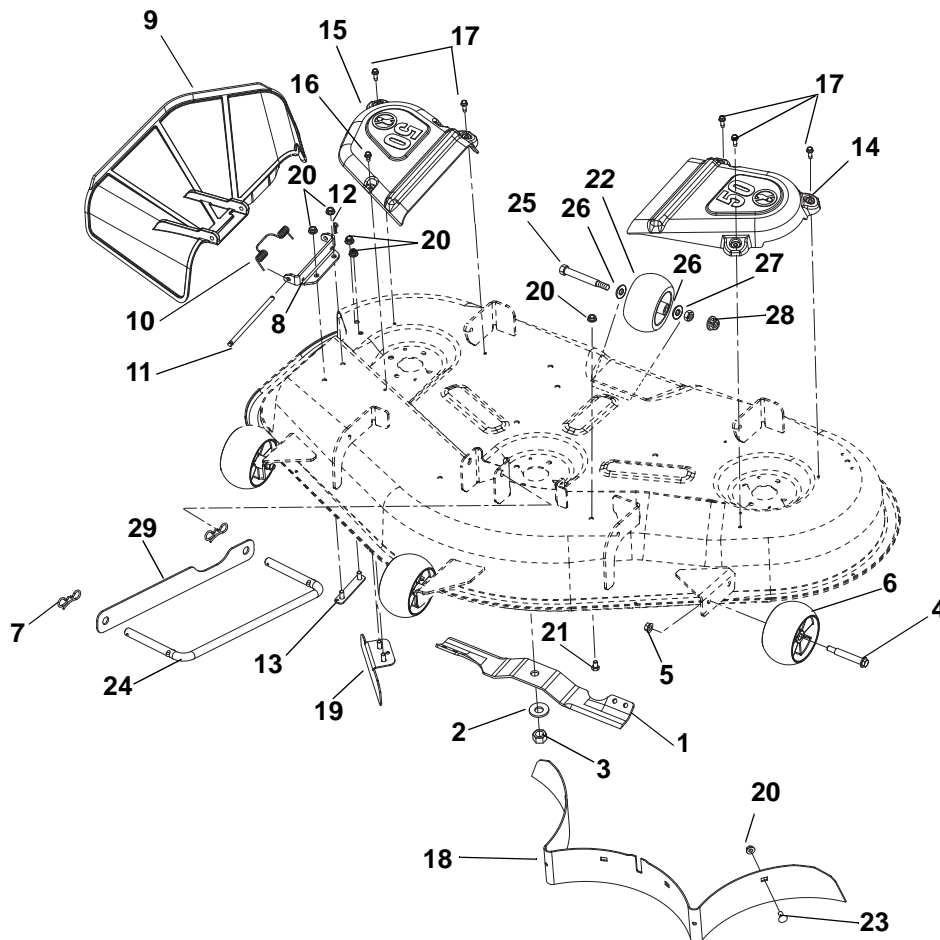
NOTES

BELT COVERS AND BLADES – 42” AND 50”

Model 915212, 214, 232, 234, 246



915212, 232, 246



915214, 234

BELT COVERS AND BLADES – 42” AND 50”

Model 915212, 214, 232, 234, 246

Item	Part No.	Qty.	Description
1	04265400	3	Mower Blade, 14.83" (915212, 232, 246)
	03971900	3	Blade, Mower 17.35" (915214, 234)
2	06445700	3	Washer, Bellville .63 x 1.625 x .14
3	06500630	3	Nut, Hex .62-18
4	07056800	3	Bolt, Shoulder .38-16 x 2.50 Hex Washer Head
5	06542000	3	Nut, Locking Top Flange .38-16
6	03905600	4	Anti-Scalp Wheel, 5 x 3 OS (915212, 232, 246)
	03905600	3	Anti-Scalp Wheel, 5 x 3 OS (915214, 234)
7	06700201	2	Pin, Bow Tie Locking Cotter .091 x 1.875
8	04073053	1	Bracket, Discharge Chute Mount 42" (915212, 232, 246)
	04443153	1	Bracket, Discharge Chute Mount 50" (915214, 234)
9	04375900	1	Discharge Chute – Molded
10	08300515	1	Spring, Torsion
11	00475800	1	Pin, 5/16 x 5.80"
12	06713500	1	Pin, Hair Internal .08 x .18 x 1.18
13	03977400	1	Weldment, Discharge Chute MT. Strap
14	03902200	1	Belt Cover, Left Hand 42" (915212, 232, 246)
	03901900	1	Belt Cover, Left Hand 50" (915214, 234)
15	03902100	1	Belt Cover, Right Hand 42" (915212, 232, 246)
	03901800	1	Belt Cover, Right Hand 50" (915214, 234)
16	07400034	2	Screw, Tapping .25-20 x .50 Hex Washer Head (915212, 232, 246)
	07400034	1	Screw, Tapping .25-20 x .50 Hex Washer Head (915214, 234)
17	07414200	4	Screw, Tapping .25-20 x .75 Hex Washer Head (915212, 232, 246)
	07414200	5	Screw, Tapping .25-20 x .75 Hex Washer Head (915214, 234)
18	03957853	1	Baffle, 42 Rear (915212, 232, 246)
	04069053	1	Baffle, 50 Rear (915214, 234)
19	04395453	1	Weldment – Baffle, Discharge 42" (915212, 232, 246)
	03955953	1	Baffle, 50" Deflector (915214, 234)
20	06543100	10	Nut, Locking Top Flange .31-18
21	05947200	2	Bolt, Hex .31-18 x .50
22	02745400	1	Roller (915214, 234)
23	06220800	1	Bolt, Round Head Square Neck .31-18 x .75
24	04377667	2	Wireform, Drag Link
25	05960900	2	Bolt, Hex .38-16 x 3.50
26	06436200	2	Washer, Flat Steel .406 x .812 x .065 (915214, 234)
27	06537200	2	Nut, Locking Center Jam .375-16 (915214, 234)
28	06545500	1	Nut, Locking Nylon Flange .38-16 (915214, 234)
29	04424951	1	Strap, Drag Link

NOTES



Ariens Company
655 West Ryan Street
Brillion, WI 54110

gravely.com



An *Ariens* Company Brand