

# 5-CHANNEL REMOTE HANDSET

**98GC1029**

**PROGRAMMING GUIDE**

**REV.07242015**



## **RV AWNING PRODUCTS**

1361 CALLE AVANZADO, SAN CLEMENTE, CA 92673 (800) 382-8442 FAX (949)276-5500

[www.girardrv.com](http://www.girardrv.com)



Girard Systems awnings may be operated in light wind and rain conditions. When periods of heavy rain and or high wind are expected the awning must be closed. Never leave the awning open and unattended.

**Damage caused by wind and rain is not covered by warranty.**

All awnings must be closed prior to moving the vehicle for any reason. As an extra safety precaution a visual check that every awning is fully closed is required.

**Damage caused by failure to comply with these instructions is not covered by warranty.**

Before using your awning, ensure that the area into which the awning will be deployed is free of obstructions (Trees, walls, pillars, posts, other vehicles etc.)

**Damage caused by collisions with any of the above or similar is not covered by warranty.**

Before using your awning make sure that all of your electrical circuits are operating correctly. Recreational Vehicles can generate AC power from three separate sources. The electrical system transfer switch in your vehicle will select power for the awning as follows:

**Shore Power** – if connected;

**Generator Power** – if the generator is running;

**Inverter Power** – batteries must be charged for inverter operation.

Girard Systems awnings are supplied with an electric motor appropriate to the product.



---

# **CONTENTS**

The G-Link System .....	3
Product Description .....	4
Programming .....	6
GC136 AC Motor Controller .....	6
GC274A / GC274B AC motor Controllers .....	7
98GC74 AC Motor Controller .....	8
GC732G DC Motor Controller .....	9
GC1146C DC Motor Controller .....	10

## **THE G-LINK SYSTEM**

The G-Link motors and control modules provided by Girard Systems communicate by use of RF signals on a frequency of 433.92 MHZ. This eliminates the need for wiring and the drilling of holes in the vehicle. These components must be electronically matched, programmed or paired before use. This is usually done at the Girard Systems factory. Should the need arise for the user to pair a device with the motor controller they must refer to the appropriate manual for the devices applicable to their particular installation.

## PRODUCT DESCRIPTION

The 98GC1029 remote handset is a 5-channel RF transmitter, powered by a single 3v Lithium battery (CR2430) designed to control up to 5 awnings and operate the LED lighting strips by means of a multi-functional circular control pad. As shown in Fig.1 below..

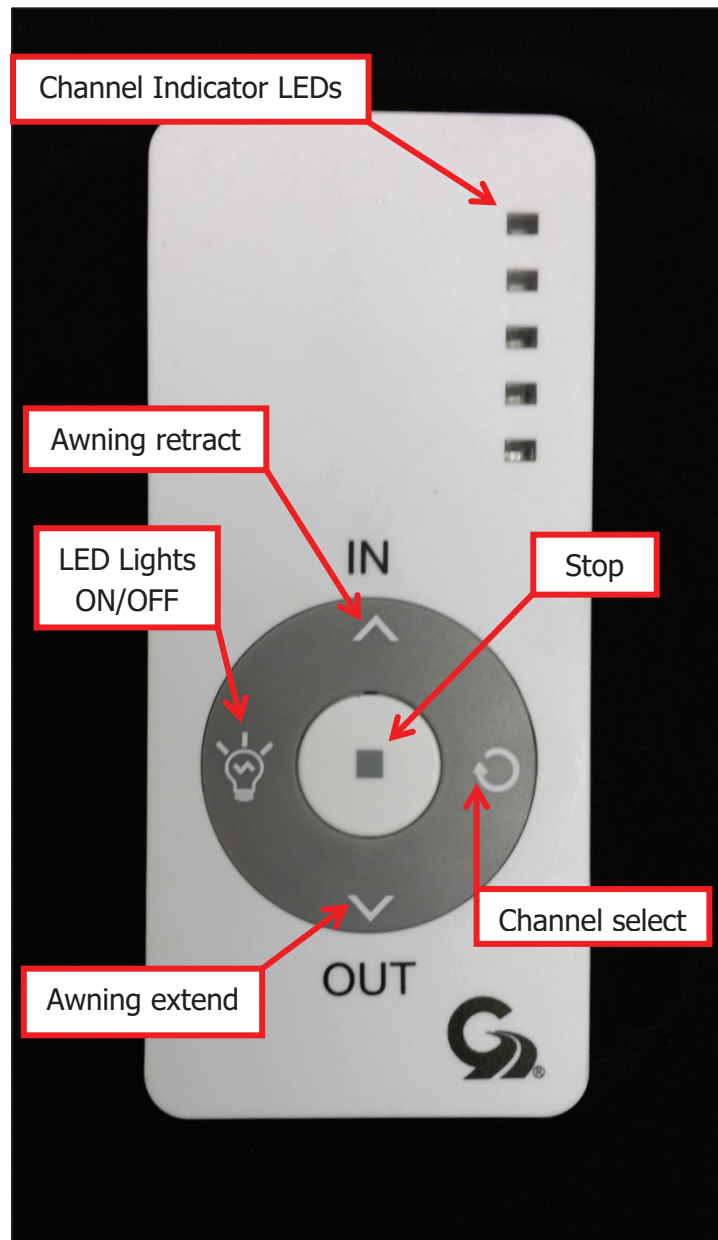


Fig.1

Turn the remote handset over to find;

- The Battery compartment, (into which a single CR2430 3v Lithium battery should be inserted as shown)
- The P2 button (used when pairing the device to some other G-Link Modules)
- Time button (Not used)
- Mode button (Not used)

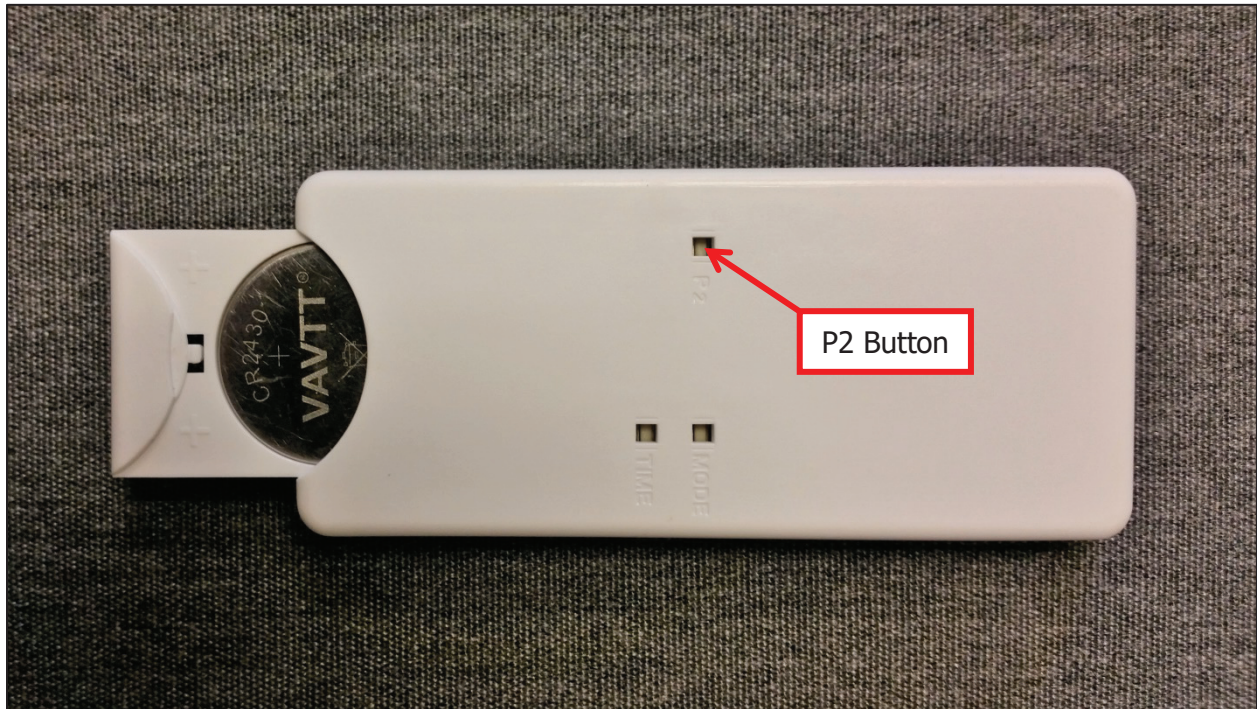


Fig.2

Please ensure that when the handset is being paired to another device that the correct channel is selected and that only one device is paired to each channel.

## **PROGRAMMING**

The following pages give instructions of how to Program or electronically Pair the handset with various motor controllers. Ensure that you select the correct set of instructions for the motor controller on your vehicle.

### **GC136 AC Motor Controller**



Fig.1



Fig.2

To pair the Remote handset with a GC136 Motor controller, follow the steps below.

**Note; when carrying out this part of the procedure each step must be executed within 10 seconds of the previous one or the module will revert to factory settings. It is highly recommended that you read and understand the following sequence before attempting to execute it.**

- 1) Ensure that there is power supplied to the Motor controller.
- 2) Using an appropriate tool press the Program button on the Motor controller. See Fig.1 (The Green LED will start blinking)
- 3) Press the STOP button on the Motor Controller. See Fig.2 ( The Green LED will remain ON)
- 4) Select the desired channel on the remote handset
- 5) Press the IN button on the remote handset. (The Green LED will extinguish)
- 6) Press the OUT, STOP and IN buttons on the handset to ensure that the Modules have been successfully paired.



## GC274A / GC274B AC motor Controllers

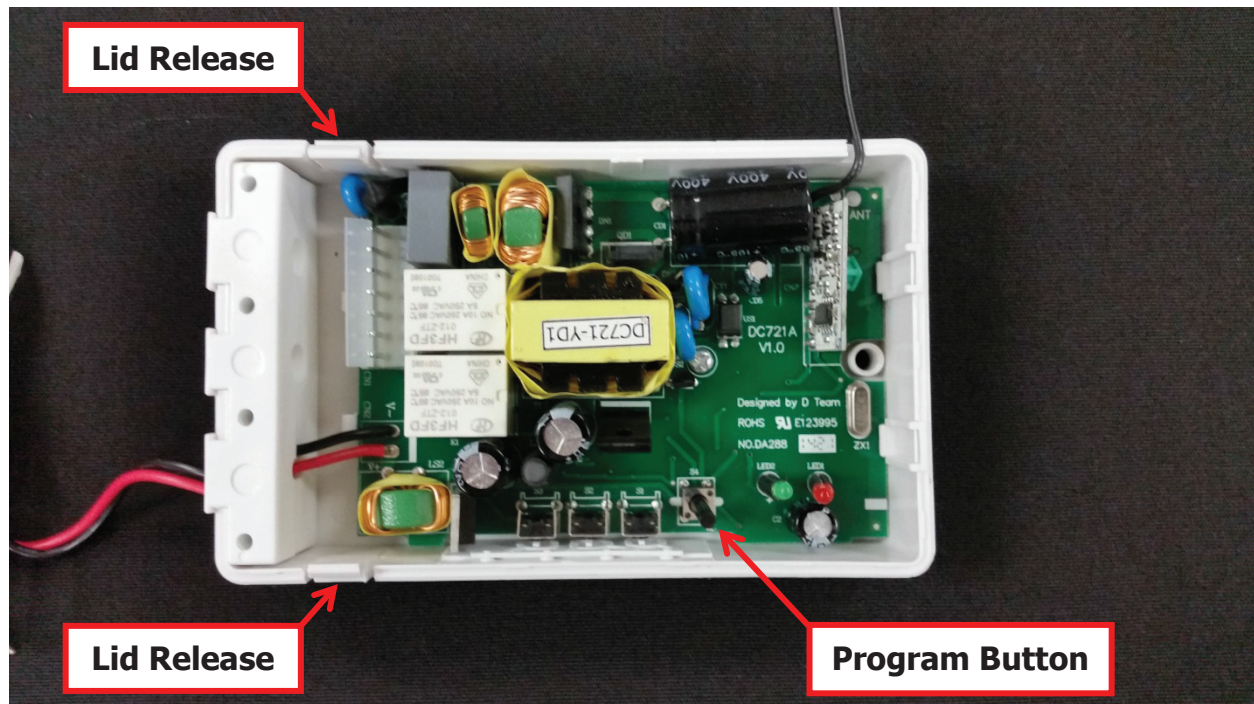


Fig.3

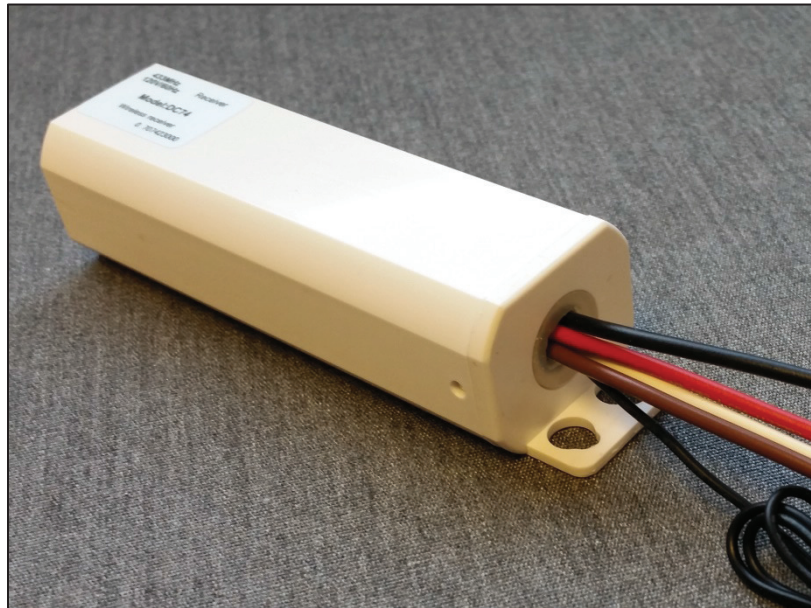
To pair the Remote handset with a GC274A or GC274B, first remove the lid of the motor control module by pressing on the Lid release catches as shown in Fig.3

**Note; when carrying out this part of the procedure each step must be executed within 10 seconds of the previous one or the module will revert to factory settings. It is highly recommended that you read and understand the following sequence before attempting to execute it.**

- 1) Ensure that there is power supplied to the Motor controller.
- 2) Press the Program button on the Motor controller. (The Green LED will start blinking)
- 3) Press the STOP button on the Motor Controller. ( The Green LED will remain ON)
- 4) Select the desired channel on the remote handset.
- 5) Press the IN button on the remote handset. (The Green LED will extinguish)
- 6) Press the OUT, STOP and IN buttons alternately on the handset to ensure that the Modules have been successfully paired.



## **98GC74 AC Motor Controller**



When pairing with the 98GC74 it is advised that the awning to be controlled is manually extended couple of feet to enable the programmer to see if the awning is responding in the correct direction when the buttons on the remote handset are pressed.

**The programming window for this module is only 6 seconds so please ensure that the programming instructions are read and understood before attempting to execute them.**

- 1) Supply power to the motor control module. (It will beep ONCE )
- 2) Select the desired channel on the Remote Handset.
- 3) Press the P2 button on the Remote Handset TWICE. (The motor controller will beep with each press)
- 4) Press the IN button on the Remote handset. (The awning should retract)

If the awning extends at this point instead of retracting, press the STOP button immediately, then remove the power supply to the motor controller for at least 10 seconds.

Next repeat steps 1 to 3 above then press the OUT button on the Remote handset to complete the programming procedure.

Ensure that the awning responds correctly to the handset by pressing the OUT, STOP and IN buttons alternately.



## **GC732G DC Motor Controller**

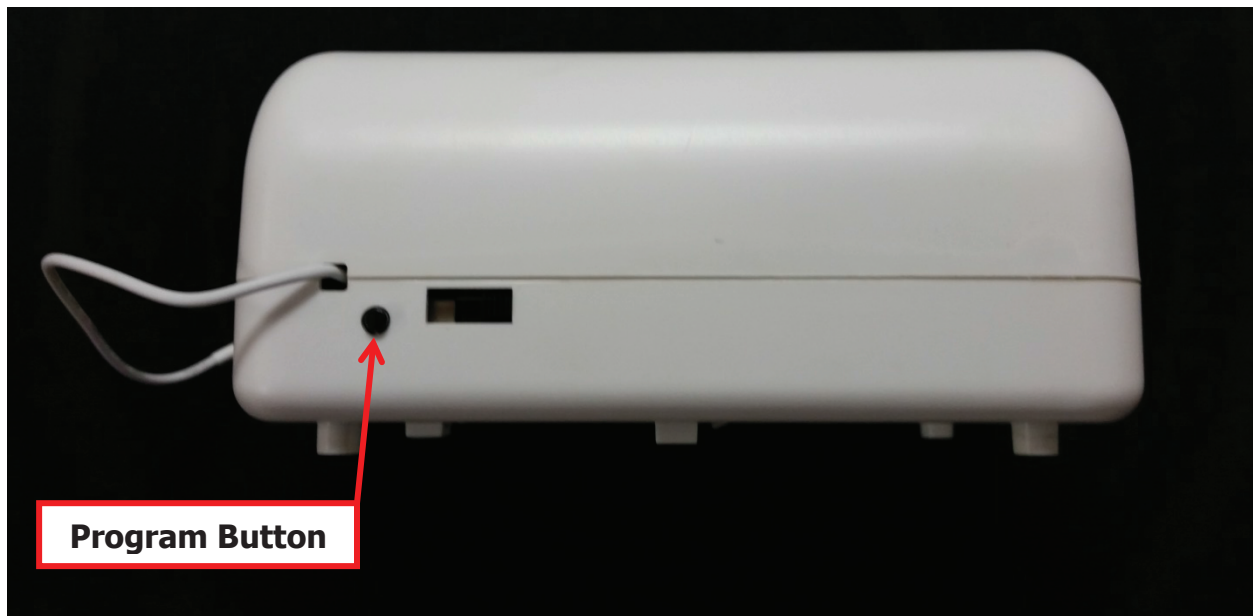


Fig.4

To pair the Remote handset with a GC732G Motor controller, follow the steps below.

**Note; when carrying out this part of the procedure each step must be executed within 10 seconds of the previous one or the module will revert to factory settings. It is highly recommended that you read and understand the following sequence before attempting to execute it.**

- 1) Ensure that there is power supplied to the Motor controller.
- 2) Press the Program button on the Motor controller. (The Red LED will start blinking)
- 3) Press the STOP button on the Motor Controller. ( The Red LED will remain ON)
- 4) Select the desired channel on the remote handset.
- 5) Press the IN button on the handset. (The Red LED will extinguish)
- 6) Press the OUT, STOP and IN buttons alternately on the handset to ensure that the Modules have been successfully paired.

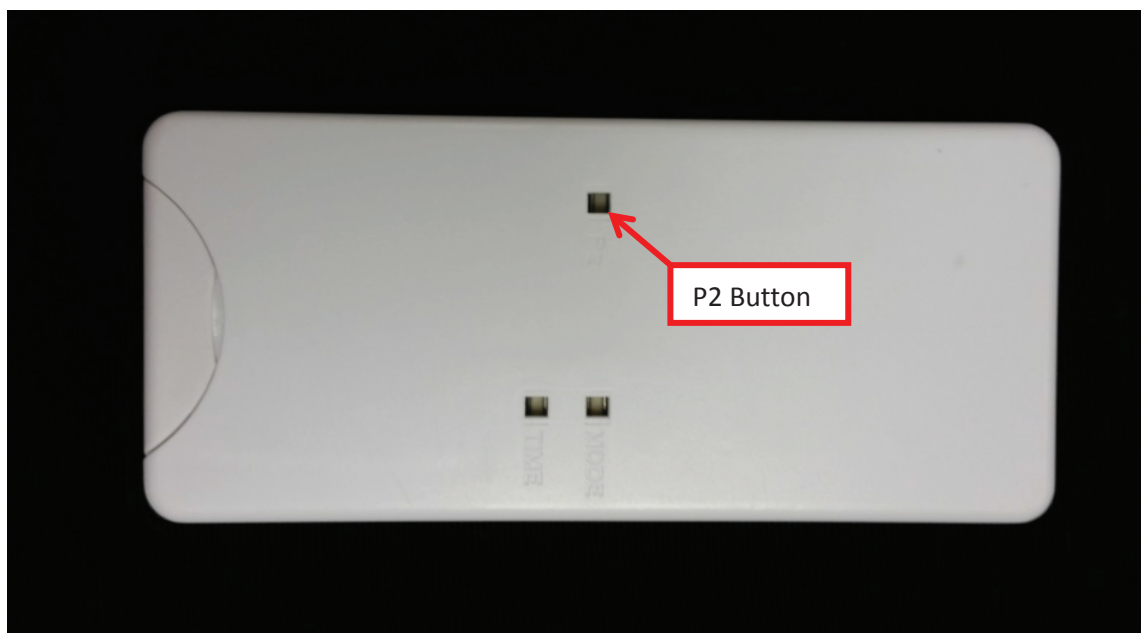


## GC1146C DC Motor Controller



To pair the Remote handset with a GC1146C Motor controller, follow the steps below.

- Fully extend the awning to ensure smooth operation, and then retract the awning leaving it partially open (about 3 feet).
- Locate the P2 Button on the back of the handset.





---

**Note; when carrying out this part of the procedure each step must be executed within 10 seconds of the previous one or the module will revert to factory settings. It is highly recommended that you read and understand the following sequence before attempting to execute it.**

- 1) Supply power to the Motor controller. (The GC1146C will emit a soft beep)
- 2) Select the desired channel on the remote handset.
- 3) Using an appropriate tool press the P2 button on the back of the Handset TWICE. ( The GC1146C will Beep with each press)
- 4) Press the IN button on the wall switch and verify that the awning moves in the desired direction.

If the awning extends at this point instead of retracting, press the STOP button immediately, then remove the power supply to the motor controller for at least 10 seconds.

Next repeat steps 1, 2 and 3 above then press the OUT button on the wall switch to complete the programming procedure.

Ensure that the awning responds correctly to the wall switch by pressing the OUT, STOP and IN buttons alternately.

For queries or assistance with programming any of your G-Link devices please call Girard Systems TOLL FREE on 800-382-8442 between 7:30am and 3:30pm P.S.T.