

Section 4



Rotameters



GEORG FISCHER
PIPING SYSTEMS

Effective Jan. 1, 2013. See www.gfpiping.com for updated info.

Rotameters

		Page
	Rotameters	4.4
	Rotameter Component Parts	4.12

Rotameters

Rotameters

Type 807 Rotameter - Polyamide Complete Assembly C
PVC Socket Ends, EPDM Seals, Standard Tube All
2" (6.6-66GPM), and all 2 1/2" Rotameters come with
PEEK guide rods. Stainless steel, and PVDF coated
stainless steel are available on request.



Size [inch]	Standard Float Part No.	USD	Magnetic Float Part No.	USD	Flow Range [gal/min]
1	198 807 622 ^	171.00	198 807 630 ^	234.00	0.22-2.20
1	198 807 623 ^	171.00	198 807 631 ^	234.00	0.44-4.40
1 ½	198 807 624 ^	239.00	198 807 632 ^	338.00	1.30-13.0
1 ½	198 807 625 ^	239.00	198 807 633 ^	338.00	2.60-26.0
2	198 807 626 ^	367.00	198 807 634 ^	524.00	4.40-44.0
2	198 807 627 ^	367.00	198 807 635 ^	524.00	6.60-66.0
2 ½	198 807 628 ^	596.00	198 807 636 ^	779.00	8.80-88.0
2 ½	198 807 629 ^	596.00	198 807 637 ^	856.00	13.2-132.0

Type 807 Rotameter - Polyamide Complete Assembly C
PVC Socket Ends, FPM Seals, Standard Tube



Size [inch]	Standard Float Part No.	USD	Magnetic Float Part No.	USD	Flow Range [gal/min]
1	198 807 638 ^	177.00	198 807 646 ^	241.00	0.22-2.20
1	198 807 639 ^	177.00	198 807 647 ^	241.00	0.44-4.40
1 ½	198 807 640 ^	252.00	198 807 648 ^	352.00	1.30-13.0
1 ½	198 807 641 ^	252.00	198 807 649 ^	352.00	2.60-26.0
2	198 807 642 ^	383.00	198 807 650 ^	542.00	4.40-44.0
2	198 807 643 ^	383.00	198 807 651 ^	542.00	6.60-66.0
2 ½	198 807 644 ^	629.00	198 807 652 ^	807.00	8.80-88.0
2 ½	198 807 645 ^	629.00	198 807 653 ^	887.00	13.2-132.0

^ = 40% Restock Charge
 * = Non-Cancelable/Non-Returnable

Rotameters

Type 807 Rotameter - Polysulphone Complete Assembly PVC Socket Ends, EPDM Seals, Short Tube

C



Size [inch]	Standard Float Part No.	USD	Magnetic Float Part No.	USD	SK#	Flow Range [gal/min]
3/8	198 807 550 ^	120.00	198 807 576 ^	170.00	50	0.01-0.11
3/8	198 807 551 ^	120.00	198 807 577 ^	170.00	51	0.02-0.22
3/8	198 807 552 ^	120.00	198 807 578 ^	170.00	52	0.04-0.44
1/2	198 807 553 ^	124.00	198 807 579 ^	187.00	60	0.03-0.33
1/2	198 807 554 ^	124.00	198 807 580 ^	187.00	61	0.06-0.66
1/2	198 807 555 ^	124.00	198 807 581 ^	187.00	62	0.08-0.88
1	198 807 556 ^	144.00	198 807 582 ^	242.00	70	0.06-0.66
1	198 807 557 ^	144.00	198 807 583 ^	242.00	71	0.13-1.32
1	198 807 558 ^	144.00	198 807 584 ^	242.00	72	0.22-2.20
1	198 807 559 ^	144.00	198 807 585 ^	242.00	73	0.44-4.40

Type 807 Rotameter - Polysulphone Complete Assembly PVC Socket Ends, EPDM Seals, Standard Tube All 2" (6.6-66GPM), and all 2 1/2" Rotameters come with PEEK guide rods. Stainless steel, and PVDF coated stainless steel are available on request.

C



Size [inch]	Standard Float Part No.	USD	Magnetic Float Part No.	USD	Flow Range [gal/min]
1	198 807 560 ^	184.00	198 807 568 ^	251.00	0.22-2.20
1	198 807 561 ^	184.00	198 807 569 ^	251.00	0.44-4.40
1 1/2	198 807 562 ^	255.00	198 807 570 ^	368.00	1.30-13.0
1 1/2	198 807 563 ^	255.00	198 807 571 ^	368.00	2.60-26.0
2	198 807 564 ^	392.00	198 807 572 ^	613.00	4.40-44.0
2	198 807 565 ^	392.00	198 807 573 ^	613.00	6.60-66.0
2 1/2	198 807 566 ^	645.00	198 807 574 ^	867.00	8.80-88.0
2 1/2	198 807 567 ^	645.00	198 807 575 ^	867.00	13.2-132.0

^ = 40% Restock Charge

* = Non-Cancelable/Non-Returnable

Rotameters

Type 807 Rotameter - Polysulphone

C

Complete Assembly

PVC Socket Ends, FPM Seals, Short Tube



Size [inch]	Standard Float Part No.	USD	Magnetic Float Part No.	USD	SK#	Flow Range [gal/min]
3/8	198 807 602 ^	124.00	198 807 612 ^	172.00	50	0.01-0.11
3/8	198 807 603 ^	124.00	198 807 613 ^	172.00	51	0.02-0.22
3/8	198 807 604 ^	124.00	198 807 614 ^	172.00	52	0.04-0.44
1/2	198 807 605 ^	131.00	198 807 615 ^	194.00	60	0.03-0.33
1/2	198 807 606 ^	131.00	198 807 616 ^	194.00	61	0.06-0.66
1/2	198 807 607 ^	131.00	198 807 617 ^	194.00	62	0.08-0.88
1	198 807 608 ^	150.00	198 807 618 ^	249.00	70	0.06-0.66
1	198 807 609 ^	150.00	198 807 619 ^	249.00	71	0.13-1.32
1	198 807 610 ^	150.00	198 807 620 ^	249.00	72	0.22-2.20
1	198 807 611 ^	150.00	198 807 621 ^	249.00	73	0.44-4.40

Type 807 Rotameter - Polysulphone

C

Complete Assembly

PVC Socket Ends, FPM Seals, Standard Tube



Size [inch]	Standard Float Part No.	USD	Magnetic Float Part No.	USD	Flow Range [gal/min]
1	198 807 586 ^	188.00	198 807 594 ^	257.00	0.22-2.20
1	198 807 587 ^	188.00	198 807 595 ^	257.00	0.44-4.40
1 1/2	198 807 588 ^	269.00	198 807 596 ^	381.00	1.30-13.0
1 1/2	198 807 589 ^	281.00	198 807 597 ^	381.00	2.60-26.0
2	198 807 590 ^	410.00	198 807 598 ^	631.00	4.40-44.0
2	198 807 591 ^	410.00	198 807 599 ^	631.00	6.60-66.0
2 1/2	198 807 592 ^	633.00	198 807 600 ^	924.00	8.80-88.0
2 1/2	198 807 593 ^	661.00	198 807 601 ^	924.00	13.2-132.0

^ = 40% Restock Charge
* = Non-Cancelable/Non-Returnable

Rotameters

Type 801 UPW Rotameter Float in PTFE, Fusion Spigots BCF

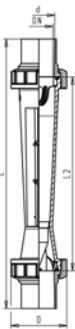
C



d [mm]	d	Part No.	USD	SK#	Flow Range [gal/min]	Flow Range [l/h]	D [inch]	L [inch]	L2 [inch]
32		198 801 209 *	392.00	70	0.36-1.0	59-182	2.36	7.91	13.39
32		198 801 210 *	392.00	71	0.4-1.4	79-300	2.36	7.91	13.39

Rotameter special version PVDF-HP Float in PTFE With fusion spigots IR/BCF

C



Type	d [mm]	Scale range [l/h]	Scale range [gal/min]	Taper tube in Polysulfone O- rings in FPM Part No.	USD
SK 70	32	68 - 204	0.3-0.9	198 807 209 *	339.00
SK 71	32	90 - 295	0.4-1.3	198 807 210 *	339.00
SK 73	32	136 - 795	0.6-3.5	198 807 202 *	339.00
SK 20	50	568 - 2273	2.5-10.0	198 807 203 *	595.00
SK 21	50	909 - 4091	4.0-18.0	198 807 204 *	595.00
SK 30	63	1000 - 8142	4.4-36.0	198 807 205 *	798.00
SK 31	63	1000 - 9091	4.4-40.0	198 807 206 *	798.00
SK 40	75	1848 - 11364	8.0-50.0	198 807 207 *	1196.00
SK 41	75	2273 - 16364	10.0-72.0	198 807 208 *	1196.00

Type	D [inch]	L [inch]	L1 [inch]	L2 [inch]	Rp [inch]
SK 70	2.36	12.52		7.87	1
SK 71	2.36	12.52		7.87	1
SK 73	2.36	12.52		7.87	1
SK 20	3.27	18.35		13.19	1 ½
SK 21	3.27	18.35		13.19	1 ½
SK 30	4.06	18.58		13.19	2
SK 31	4.06	18.58		13.19	2
SK 40	4.80	19.49		13.19	2 ½
SK 41	4.80	19.49		13.19	2 ½

^ = 40% Restock Charge

* = Non-Cancelable/Non-Returnable

End Connection Options

- A** PVC Threaded
- B** PVC Flanged
- C** PP Socket
- D** PP Threaded
- E** PP Flanged
- F** PVDF Socket
- G** PVDF Threaded
- H** PVDF Flanged

Seal Options

- A** EPDM
- B** FPM

Build your own Rotameter Assembly

Combine to build final part number

Example: A 2" PSU Rotameter with Polypropylene socket end connections, EPDM seals, with a non-magnetic float will have the following part number: **198 335 828 DA**

1) Choose Tube Assembly, 2) Choose Ends, and 3) Choose Seals

Tube Only	End Connection	Seal Material
198 335 828	D	A

List Price = \$327 + \$116 + No Charge = \$443

Rotameters Options Price Adders

(C)

End Connections									Seals	
Size Inch	Option A \$	Option B \$	Option C \$	Option D \$	Option E \$	Option F \$	Option G \$	Option H \$	Option A \$	Option B \$
3/8	N/A	N/A	21	N/A	N/A	37	N/A	N/A	N/C	3
1/2	13	20	21	54	50	42	70	82	N/C	6
1	24	26	64	64	82	66	116	127	N/C	6
1 1/2	38	41	53	89	126	116	193	207	N/C	15
2	44	50	78	116	170	170	260	287	N/C	18
2 1/2	N/A	231	376	N/A	485	404	N/A	601	N/C	26

- Only PVC socket short tube and standard tube rotameters are available as assemblies.
- Use the rotameter configurator to build all other connections and seal material requirements.
- Industrial rotameters come with the option of either non-magnetic, or magnetic floats for use with limit switches.
- High purity rotameter tubes come only with the tube. The float (PTFE) must be ordered separately.

P0900036
12.12

Rotameters

Type 806 Polysulphone Tube With Float Standard Tube

C

See end of section for end connector options and pricing

All 2" (6.6-66GPM), and all 2 1/2" Rotameters come with PEEK guide rods. Stainless steel, and PVDF coated stainless steel are available on request.

Size [inch]	Standard Float Part No.	USD	Magnetic Float Part No.	USD	Flow Range [gal/min]
1	198 335 840 *	169.00	198 335 940 *	237.00	0.22-2.20
1	198 335 841 *	169.00	198 335 941 *	237.00	0.44-4.40
1 1/2	198 335 845 *	230.00	198 335 945 *	345.00	1.30-13.0
1 1/2	198 335 846 *	230.00	198 335 946 *	345.00	2.60-26.0
2	198 335 848 *	362.00	198 335 948 *	591.00	4.40-44.0
2	198 335 849 *	362.00	198 335 949 *	591.00	6.60-66.0
2 1/2	198 335 850	429.00	198 335 950	698.00	8.80-88.0
2 1/2	198 335 851	429.00	198 335 951	698.00	13.2-132.0

Type 806 Polysulphone Tube Only Short Tube

C

See end of section for end connector options and pricing

Size [inch]	Standard Float Part No.	USD	Magnetic Float Part No.	USD	SK#	Flow Range [gal/min]
3/8	198 806 100 *	102.00	198 806 110 *	151.00	50	0.01-0.11
3/8	198 806 101 *	102.00	198 806 111 *	151.00	51	0.02-0.22
3/8	198 806 102 *	102.00	198 806 112 *	151.00	52	0.04-0.44
1/2	198 806 103 *	105.00	198 806 113 *	167.00	60	0.03-0.33
1/2	198 806 104 *	105.00	198 806 114 *	167.00	61	0.06-0.66
1/2	198 806 105 *	105.00	198 806 115 *	167.00	62	0.08-0.88
1	198 806 106 *	118.00	198 806 116 *	211.00	70	0.06-0.66
1	198 806 107 *	118.00	198 806 117 *	211.00	71	0.13-1.32
1	198 806 108 *	118.00	198 806 118 *	211.00	72	0.22-2.20
1	198 806 109 *	118.00	198 806 119 *	211.00	73	0.44-4.40

Type 806 Polyamide Tube Only Standard Tube

C

See end of section for end connector options and pricing

Size [inch]	Standard Float Part No.	USD	Magnetic Float Part No.	USD	Flow Range [gal/min]
1	198 335 820 *	153.00	198 335 920 *	222.00	0.22-2.20
1	198 335 821 *	153.00	198 335 921 *	222.00	0.44-4.40
1 1/2	198 335 825 *	207.00	198 335 925 *	314.00	1.30-13.0
1 1/2	198 335 826 *	207.00	198 335 926 *	314.00	2.60-26.0
2	198 335 828 *	327.00	198 335 928 *	499.00	4.40-44.0
2	198 335 829 *	327.00	198 335 929 *	499.00	6.60-66.0
2 1/2	198 335 830	410.00	198 335 930	523.00	8.80-88.0
2 1/2	198 335 831	410.00	198 335 931	678.00	13.2-132.0

^ = 40% Restock Charge

* = Non-Cancelable/Non-Returnable

Rotameters

Spare Part for Variable Area Flow Meter SK50-SK73/SK500-SK730

Short version float PTFE
Without magnet

C

Type	d [mm]	Part No.	USD	
SK 73	32	198 807 166	112.00	

Spare part for variable area flow meter SK10-SK41/SK100-SK410

Standard version float PTFE
Without magnet

C

Type	d [mm]	Part No.	USD	
SK 20	50	198 807 167	172.00	
SK 21	50	198 807 171	172.00	
SK 30	63	198 807 168	196.00	
SK 31	63	198 807 172	221.00	
SK 40	75	198 807 169	236.00	
SK 41	75	198 807 170	236.00	

^ = 40% Restock Charge
* = Non-Cancelable/Non-Returnable

Rotameters

Type 801 Polysulphone UPW Tube Only - PTFE Float not included C FPM Seals

See end of section for end connector options and pricing

d [mm]	Part No.	USD	Flow Range [gal/min]
32	700 251 574 *	97.00	0.6-3.5
50	700 251 575 *	140.00	2.5-10.0
50	700 251 576 *	140.00	4.0-18.0
63	700 251 577 *	195.00	4.4-35.0
63	700 251 578 *	195.00	4.4-40.0
75	700 251 579 *	345.00	8.0-50.0
75	700 251 580 *	345.00	10.0-72.0

^ = 40% Restock Charge

* = Non-Cancelable/Non-Returnable

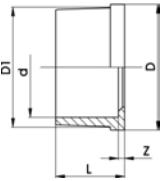
+GF+

Effective Jan. 1, 2013. See www.gfpiping.com for updated info.

Rotameters

Rotameter Component Parts

Union Ends, PVC IPS Socket

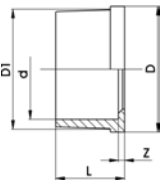


Model:

- With solvent cement socket ASTM

d [inch]	PSI	Part No.	USD	z [inch]	D [inch]	D1 [inch]	L [inch]
3/8	240	721 602 005	1.00	0.12	0.94	0.87	0.87
1/2	240	721 602 006	2.00	0.12	1.18	1.10	0.98
1	240	721 602 008	2.00	0.12	1.77	1.65	1.26
1 1/2	240	721 602 010	4.00	0.12	2.48	2.32	1.50
2	240	721 602 011	6.00	0.12	3.07	2.91	1.61

Union Ends, PVC Metric Socket



Model:

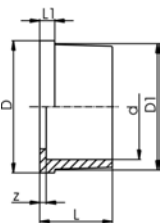
- Solvent cement socket metric
- Suitable for unions, tank connectors and diaphragm valves Type 514

* for Adaptor Unions 21 53 02, 21 53 07, 21 55 02, 21 55 07 old version

d [mm]	PSI	Part No.	USD	z [inch]	D [inch]	D1 [inch]	L [inch]
16	240	721 500 105	1.00	0.12	0.94	0.87	0.67
20	240	721 500 106	1.00	0.12	1.18	1.10	0.75
32	240	721 500 108	2.00	0.12	1.77	1.65	0.98
50	240	721 500 110	4.00	0.12	2.48	2.32	1.34
63	240	721 500 111	6.00	0.12	3.07	2.91	1.61
* 75	150	721 600 112	15.00	0.12	3.82	3.54	1.85

Union Ends, PP Socket

A



Model:

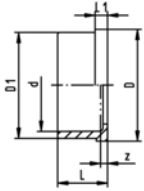
- Material: PP-H
- Fusion socket metric

d [mm]	PSI	Part No.	USD	D [inch]	D1 [inch]	L [inch]	L1 [inch]	z [inch]
16	150	727 500 105 *	3.12	0.94	0.87	0.71	0.16	0.12
20	150	727 500 106 *	4.16	1.18	1.10	0.75	0.20	0.12
32	150	727 500 108 *	5.20	1.77	1.65	0.91	0.24	0.12
50	150	727 500 110 *	7.28	2.48	2.32	1.10	0.28	0.12
63	150	727 500 111 *	8.32	3.11	2.91	1.26	0.31	0.12
75	150	727 500 112 *	36.00	3.98	3.58	1.42	0.39	0.12

^ = 40% Restock Charge
* = Non-Cancelable/Non-Returnable

Rotameters

A

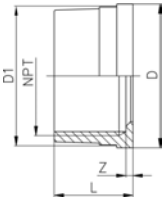


Union End, PVDF Standard Socket

Model:

- Material: PVDF
- Suitable for SYGEF Standard Union Socket Fusion
- Suitable for Diaphragm Valves Type 314 and 514
- Suitable for Vortex Sensor

d [mm]	PSI	Part No.	USD	D [inch]	D1 [inch]	L [inch]	L1 [inch]	z [inch]
16	240	735 600 105 *	14.00	0.94	0.87	0.71	0.16	0.20
20	240	735 600 106 *	14.00	1.18	1.10	0.75	0.20	0.20
32	240	735 600 108 *	19.00	1.77	1.65	0.91	0.24	0.20
50	240	735 600 110 *	31.00	2.48	2.32	1.10	0.28	0.20
63	240	735 600 111 *	42.00	3.07	2.91	1.26	0.28	0.20



Union Ends, PVC Threaded

Model:

- Taper female thread NPT (ASTM)

NPT [inch]	PSI	Part No.	USD	z [inch]	D [inch]	D1 [inch]	L [inch]
1/2	150	721 602 656	4.00	0.08	1.18	1.10	0.75
1	150	721 602 658	6.00	0.12	1.77	1.65	0.98
1 1/2	150	721 602 660	17.00	0.43	2.48	2.32	1.34
2	150	721 602 661	17.00	0.67	3.07	2.91	1.61

End Connectors PVC Socket End Connectors

d [mm]	Size [inch]	PVC (inch) Part No.	USD
75	2 1/2	700 259 430	28.00

End Connectors PVDF Socket End Connectors

d [mm]	Size [inch]	PVDF (mm) Part No.	USD
75	2 1/2	735 600 112	44.00

End Connectors PP Threaded End Connectors

d [mm]	Size [inch]	PP (FNPT) Part No.	USD
20	1/2	198 203 603	19.00
32	1	198 203 604	23.00
50	1 1/2	198 203 606	26.00
63	2	198 203 607	30.00

^ = 40% Restock Charge

* = Non-Cancelable/Non-Returnable

Rotameters

End Connectors

PVDF Threaded End Connectors

d [mm]	Size [inch]	PVDF (FNPT) Part No.	USD
20	1/2	198 203 611	27.00
32	1	198 203 612	41.00
50	1 1/2	198 203 614	63.00
63	2	198 203 615	79.00

Union Nut, PVC

* for Adaptor unions PVC-U / malleable iron only



d [mm]	PSI	Part No.	USD	L [inch]	G [inch]	Tr	D [inch]
16	240	721 890 005	2.00	0.83	3/4		0.87
20	240	721 890 006	2.00	0.91	1		1.10
32	240	721 890 008	3.00	1.02	1 1/2		1.61
50	240	721 890 010	6.00	1.34	2 1/4		2.32
63	240	721 890 011	8.00	1.50	2 3/4		2.91

Union Nut, PP

A

Model:

- Material: PP glass-fibre reinforced



Socket Fusion d [mm]	Butt Fusion d [mm]	PSI	G (R/Rp BS Thread) [inch]	Part No.	USD	D [inch]	L [inch]
16	16	150	3/4	727 890 405 *	14.56	1.38	0.83
20	20	150	1	727 890 406 *	16.64	1.89	0.94
32	32	150	1 1/2	727 890 408 *	20.00	2.56	1.10
50	50	150	2 1/4	727 890 410 *	42.00	3.31	1.18
63	63	150	2 3/4	727 890 411 *	67.00	4.37	1.54

Union Nut, PN 16, PVDF Standard

A

Model:

- Material: PVDF
- d75, d90 and d110 with buttress shaped thread

Note:

For the dimensions d75-110 please see instructions for the installation



Socket Fusion d [mm]	Butt Fusion d [mm]	PSI	Part No.	USD	D [inch]	G (R/Rp BS Thread) [inch]	L [inch]
16	16	240	735 690 405 *	21.00	1.38	3/4	0.83
20	20	240	735 690 406 *	24.00	1.69	1	0.87
32	32	240	735 690 408 *	39.00	2.36	1 1/2	1.02
50	50	240	735 690 410 *	81.00	3.23	2 1/4	1.30
63	63	240	735 690 411 *	127.00	3.94	2 3/4	1.38

^ = 40% Restock Charge

* = Non-Cancelable/Non-Returnable

Rotameters

Special Scale for Type 335 m³/h

C

d [mm]	Scale range [m ³ /h]	Corresponds to wa- ter scale [gal/h]	Part No.	USD
32	0.05 - 0.5	13.21 - 132.10	198 335 655	18.00
32	0.1 - 1	26.42 - 264.20	198 335 656	18.00
50	0.3 - 3	79.26 - 792.60	198 335 660	18.00
50	0.6 - 6	158.52 - 1585.20	198 335 661	18.00
63	1 - 10	264.20 - 2642.00	198 335 663	18.00
63	1.5 - 15	396.30 - 3963.00	198 335 664	18.00
75	2 - 20	528.40 - 5284.00	198 335 665	18.00
75	3 - 30	792.60 - 7926.00	198 335 666	18.00

Special Scale for Type 335 GPM

C

d [mm]	Scale range [gal/min]	Corresponds to wa- ter scale [gal/h]	Part No.	USD
32	0.22 - 2.2	13.21 - 132.10	198 335 685	18.00
32	0.44 - 4.4	26.42 - 264.20	198 335 686	18.00
50	1.32 - 13.2	79.26 - 792.60	198 335 690	18.00
50	2.64 - 26.4	158.52 - 1585.20	198 335 691	18.00
63	4.40 - 44.02	264.20 - 2642.00	198 335 693	18.00
63	6.60 - 66.04	396.30 - 3963.00	198 335 694	18.00
75	8.80 - 88	528.40 - 5284.00	198 335 695	18.00
75	13.20 - 132	792.60 - 7926.00	198 335 696	18.00

Special Scale for Type 335 Air: 14.7 psi/0bar - Nm³/h

C

d [mm]	Scale range [m ³ /h]	Corresponds to wa- ter scale [gal/h]	Part No.	USD
32	1.5 - 14	13.21 - 132.10	198 350 655	16.00
32	2.5 - 29	26.42 - 264.20	198 350 656	16.00
50	9 - 108	79.26 - 792.60	198 350 660	16.00
50	17 - 174	158.52 - 1585.20	198 350 661	16.00
63	29 - 301	264.20 - 2642.00	198 350 663	16.00

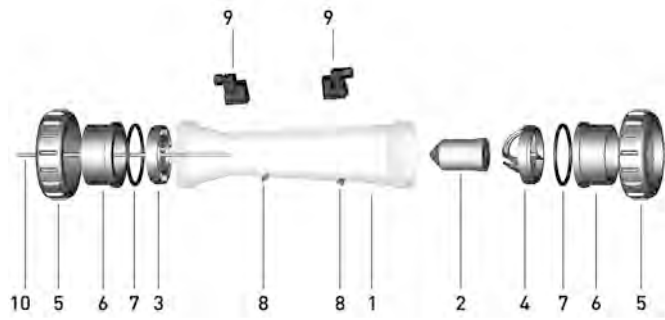
^ = 40% Restock Charge

* = Non-Cancelable/Non-Returnable

+GF+

Effective Jan. 1, 2013. See www.gfpiping.com for updated info.

Spare Parts for Type 335



Pos.	Item	Quantity
1	Taper tube	1
2	Float	1
3	Bottom insert	1
4	Top insert	1
5	Union nut	2
6	Union end	2
7	O-Ring	2
8	Flow value indicator	2
9*	Limit contact	2
10**	Guiding rod	1

* optional

** only for DN50 (1500-15000 l/h) and DN65
(all metering ranges)

Rotameters

Spare Parts for Type 335



Insert PVDF (3,4) B



Scale range [l/h]	d [mm]	Size	top (4) Part No.	USD	bottom (3) Part No.	USD
50 - 500	32	1	198 335 970	23.00	198 335 977	23.00
100 - 1000	32	1	198 335 970	23.00	198 335 977	23.00
300 - 3000	50	1 ½	198 335 972	29.00	198 335 979	29.00
600 - 6000	50	1 ½	198 335 972	29.00	198 335 979	29.00
1000 - 10000	63	2	198 335 973	43.00	198 335 980	43.00
1500 - 15000	63	2	198 335 974	43.00		
2000 - 20000	75	2 ½	198 335 975	51.00		
3000 - 30000	75	2 ½	198 335 975	51.00		

Float PVDF (2) B



Scale range [l/h]	d [mm]	Size	Without magnet Part No.	USD	With magnet (bistabil) Part No.	USD
50 - 500	32	1	198 335 455	91.00	198 335 470	120.00
100 - 1000	32	1	198 335 455	91.00	198 335 470	120.00
300 - 3000	50	1 ½	198 335 457	102.00	198 335 471	128.00
600 - 6000	50	1 ½	198 335 457	102.00	198 335 471	128.00
1000 - 10000	63	2	198 335 457	102.00	198 335 471	128.00
1500 - 15000	63	2	198 335 458	120.00	198 335 472	148.00
2000 - 20000	75	2 ½	198 335 459	138.00	198 335 473	174.00
3000 - 30000	75	2 ½	198 335 459	138.00	198 335 473	174.00

^ = 40% Restock Charge

* = Non-Cancelable/Non-Returnable

+GF+

Effective Jan. 1, 2013. See www.gfpiping.com for updated info.

Rotameters

Spare Parts for Type 335



Guiding rod PEEK (10)

B

Model:

- Only for 2" (6.6–66.04 GPM) and all 2½" rotameters

Scale range [l/h]	d [mm]	Size	Peek Part No.	USD	Stainless steel Part No.	USD	PVDF Part No.	USD
1500 - 15000	63	2	198 335 985	71.00	198 335 098	58.00		
2000 - 20000	75	2 ½	198 335 985	71.00	198 335 098	58.00		
3000 - 30000	75	2 ½	198 335 985	71.00	198 335 098	58.00		
8000 - 80000	75	2 ½			198 335 098	58.00		



Insert guiding rod PVDF (for 10)

B

Model:

- Only for 2" (6.6–66.04 GPM) and all 2½" rotameters

Scale range [l/h]	d [mm]	Size	for PEEK Part No.	USD
1500 - 15000	63	2	198 335 986	43.00
2000 - 20000	75	2 ½	198 335 987	40.00
3000 - 30000	75	2 ½	198 335 987	40.00



Flow value indicator PS (8)

B

Model:

- For all dimensions Type 335; see next page for details

d [mm]	Size	Flow value indica- tor Part No.	USD
32	1	198 335 990	2.00
40	1 ¼	198 335 990	2.00
50	1 ½	198 335 990	2.00
63	2	198 335 990	2.00
75	2 ½	198 335 990	2.00



^ = 40% Restock Charge
* = Non-Cancelable/Non-Returnable

Rotameters

O-rings (7)

B



d [mm]	Size	EPDM Part No.	USD	FPM Part No.	USD
32	1	748 410 008 *	5.00	749 410 008 *	7.00
40	1 ¼	748 410 009 *	5.00	749 410 009 *	14.00
50	1 ½	748 410 010 *	5.00	749 410 010 *	15.00
63	2	748 410 011 *	7.00	749 410 011 *	16.00
75	2 ½	748 410 014 *	10.00	749 410 014 *	24.00

Special scale for short version Water

C

Type	Scale range [l/h]	Part No.	USD
SK 50 / 500	2.5 - 25.0	198 801 386	8.00
SK 51 / 510	5.0 - 50.0	198 801 387	8.00
SK 52 / 520	10.0 - 100.0	198 801 388	8.00
SK 60 / 600	8.0 - 80.0	198 801 389	8.00
SK 61 / 610	15.0 - 150.0	198 801 390	8.00
SK 62 / 620	20.0 - 200.0	198 801 391	8.00
SK 70 / 700	15.0 - 150.0	198 801 392	8.00
SK 71 / 710	30.0 - 300.0	198 801 393	8.00
SK 72 / 720	50.0 - 500.0	198 801 394	8.00
SK 73 / 730	100.0 - 1000.0	198 801 395	8.00

^ = 40% Restock Charge

* = Non-Cancelable/Non-Returnable

+GF+

Effective Jan. 1, 2013. See www.gfpiping.com for updated info.

Rotameters

Spare Part for Variable Area Flow Meter SK50-SK73/SK500-SK730

Short version float PVDF Without magnet

C

Type	d [mm]	Part No.	USD
SK 50 / 51 / 52	16	198 806 219	67.00
SK 60 / 61 / 62	20	198 806 220	71.00
SK 70 / 71 / 72 / 73	32	198 806 221	84.00

Short Version Magnetic Float PVDF

C

Type	d [mm]	Part No.	USD
SK 500 / 510 / 520	16	198 806 222	116.00
SK 600 / 610 / 620	20	198 806 223	129.00
SK 700 / 710 / 720 / 730	32	198 806 224	155.00

Accessories

C

4-20 mA sensor For type 335 and type 350



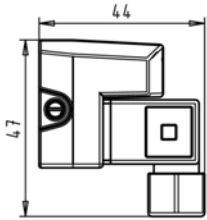
Type	d [mm]	Corresponds to water scale [l/h]	Part No.	USD
GK 15	32	50-500	198 335 962	547.00
GK 15	32	100-1000	198 335 963	546.00
GK 15	40	150-1500	198 335 964	547.00
GK 15	40	250-2500	198 335 965	547.00
GK 15	50	200-2000	198 335 966	547.00
GK 15	50	300-3000	198 335 967	547.00
GK 15	50	600-6000	198 335 968	547.00
GK 15	63	600-6000	198 335 969	547.00
GK 15	63	1000-10000	198 335 991	547.00
GK 15	63	1500-15000	198 335 992	547.00
GK 15	75	2000-20000	198 335 993	547.00
GK 15	75	3000-30000	198 335 994	547.00
GK 15	75	8000-60000	198 335 995	547.00

^ = 40% Restock Charge
* = Non-Cancelable/Non-Returnable

Rotameters

Accessories Limit contacts GK10/GK11 For type 335

C



Type	Part No.	USD	
GK10 (min.)	198 335 960	89.00	
GK11 (max.)	198 335 961	89.00	

^ = 40% Restock Charge
* = Non-Cancelable/Non-Returnable