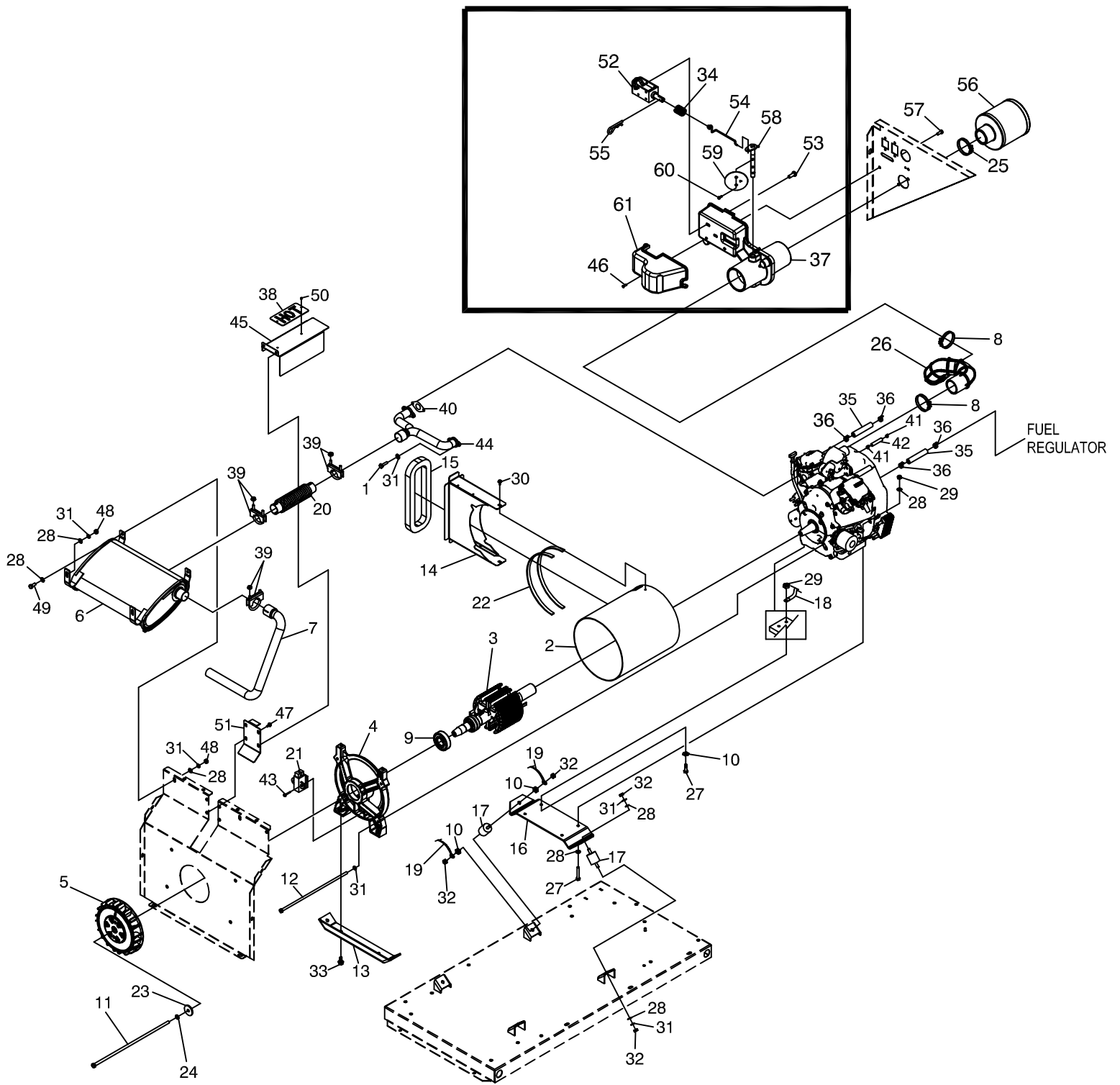


# GROUP



EXPLODED VIEW: GENERATOR  
DRAWING #: 0G4392

GROUP

APPLICABLE TO: 2006 HSB

ITEM	PART #	QTY.	DESCRIPTION
1	040976	4	SCREW SHC M8-1.25 X 20mm
2	0F6694	1	STATOR (16KW)
	0F5538	1	STATOR (13KW)
	0F7548	1	STATOR (10KW)
3	0F9795	1	ROTOR (16KW)
	0F5539	1	ROTOR (13KW)
	0F7549	1	ROTOR (10KW)
4	0F7774	1	CARRIER, REAR BEARING
5	0E9579	1	FAN, 12" CURVED BLADE
	0F8998	1	FAN, 12" CURVED BLADE (10KW)
6	0F6591	1	MUFFLER
7	0F8078	1	TAIL PIPE, MUFFLER
8	099502	2	CLAMP HOSE #24 B1.06-2.00 (10KW)
9	056482	1	BEARING
10	0C3168	3	5/16 SPECIAL LOCK WASHER
11	0D1838	1	BOLT, IHHCS 3/8"-24 X 15.50"
12	0D1846	4	BOLT, IHHCS M8-1.25 X 345mm
13	0C7038	1	BRACKET, ALTERNATOR MOUNTING
14	0F9396	1	DUCT, ALTERNATOR AIR
15	0D2559	1	GASKET, ALTERNATOR AIR DUCT
16	0C7038A	1	BRACKET, ENGINE MOUNTING
	0F4179	1	PLATE, MOUNTING ENG 530HSB
17	0C7758	4	RUBBER MOUNT
18	0388050AD0	1	CABLE, #6 48" BLACK BATTERY
19	0C2417A	1	EARTH STRAP 3/8 X 3/8
20	0F6528	1	EXHAUST FLEX
21	066386	1	ASSEMBLY BRUSH HOLDER
22	029451	2.6 FT	TAPE ELEC UL FOAM 1/8 X 1/2
23	049451	1	WASHER FLAT .406ID X 1.62OD
24	022237	1	WASHER LOCK 3/8
25	035685	1	CLAMP HOSE #28 1.32-2.25 (10KW)
26	0E9549	1	HOSE, INTAKE GTH530 HSB (10KW)
27	051731	4	SCREW HHC M8-1.25 X 50
28	022145	18	WASHER FLAT 5/16 ZINC
29	049820	4	NUT LOCK HEX M8-1.25 NYL INSERT
30	0G0676	2	SCREW THTT M6-1.0 X 10

ITEM	PART #	QTY.	DESCRIPTION
31	022129	18	WASHER LOCK M8-5/16
32	022259	8	NUT LOCK HEX 5/16-18
33	059637	2	SCREW TAPTITE 3/8-16 X 3/4
34	0E9591	1	SPRING-CHOKE RETURN (10KW)
35	0F7065	3 FT	HOSE RES 1/2 LP GAS
36	048031M	4	HOSE CLAMP 3/4" I.D.
37	0E9589	1	CHOKE HSG (10KW)
38	0G0414	1	PLATE, "HOT"
39	0D5823	3	U-BOLT 5/16"-18 X 1.62" WITH SADDLE
40	0E9369	2	GASKET, EXHAUST PORT (10KW)
	0C4138	2	GASKET, EXHAUST PORT
41	040173	2	CLAMP HOSE #5.5 0.62"-0.62" (10KW)
42	074995	1.44 FT	HOSE 1/4 ID LPG 350PSI UL21 (10KW)
43	066849	2	SCREW HHTT M5-0.8 X 16
44	0F7799	1	EXHAUST MANIFOLD
	0F8115	1	EXHAUST MANIFOLD (10KW)
45	0G30430GS0R	1	FLEX COVER
	0G30440GS0R	1	FLEX COVER (10KW)
46	0E9595	2	SCREW PPPH HI-LO #6/12 W/ #5HD (10KW)
47	090388	7	SCREW TAPTITE M6-1.0 X 12
48	045771	4	NUT HEX M8-1.25
49	039253	2	SCREW HHC M8-1.25 X 20
50	0F0710	2	RIVET POP 0.125" X 0.337"
51	0F8079	1	BRACKET MUFFLER ACCESS
52	0F9273	1	SOLENOID, 6 VOLTS DC (10KW)
53	0E9592	2	SCREW PPHM \$4-40 X 3/8 SEMS (10KW)
54	0E9588	1	LINKAGE, CHOKE (10KW)
55	077091	1	COTTER PIN (10KW)
56	0E9581	1	AIR CLEANER GTH530 HSB (10KW)
57	0E9594	3	SCREW PPPH HI-LO #14-15 X 1/2 (10KW)
58	0E9590	1	ASSEMBLY, CHOKE SHAFT (10KW)
59	0E9542	1	VALVE, CHOKE (10KW)
60	0D1683	2	SCREW PFHM M3-0.5 X 5 (10KW)
61	077075	1	BOOT, CHOKE SOLENOID (10KW)