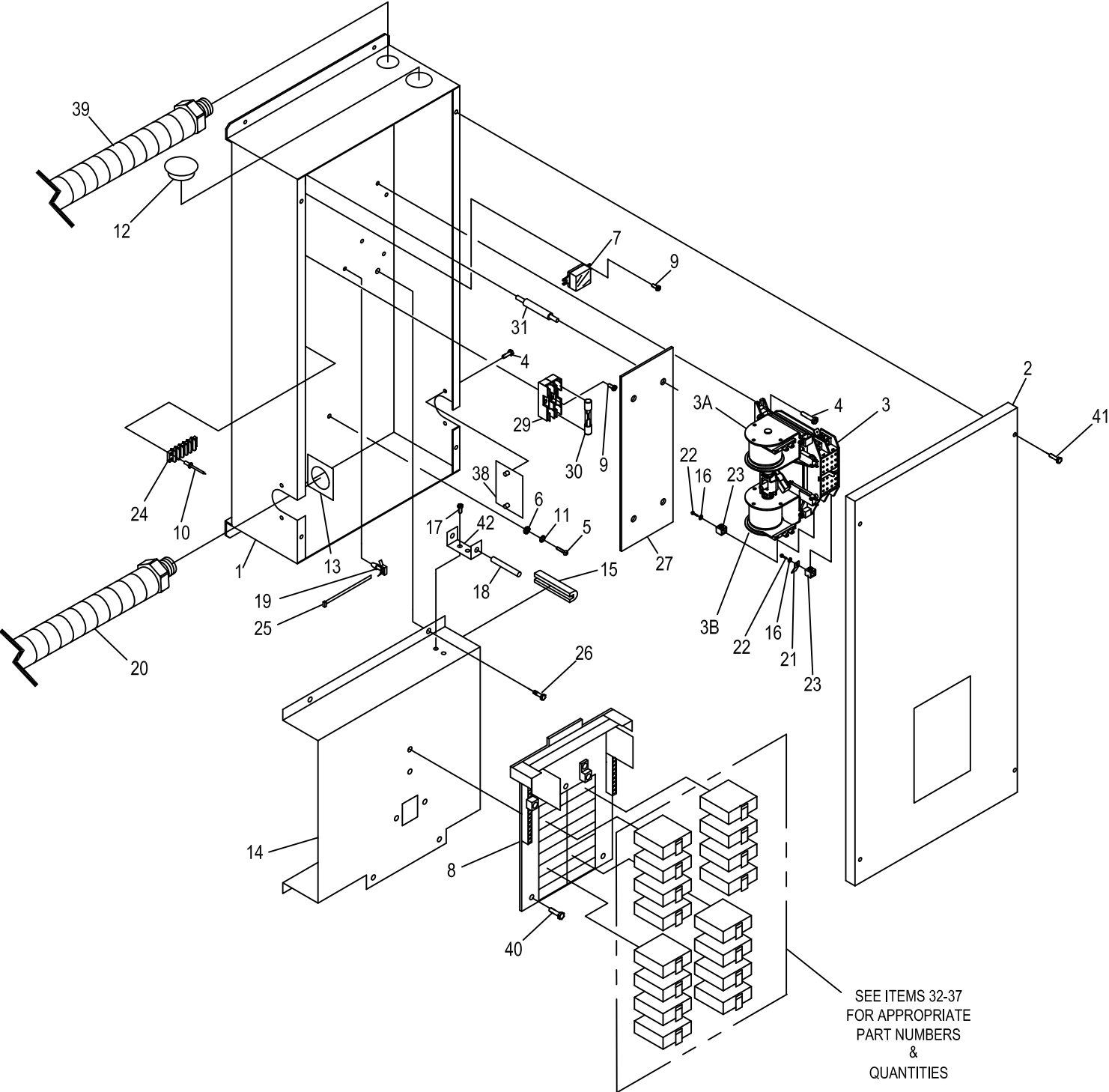


GROUP



EXPLODED VIEW: GTS LOAD CENTER

DRAWING #: 0F9774

GROUP

APPLICABLE TO: 2006 HSB

ITEM	PART #	QTY.	DESCRIPTION
1	0F8278	1	BOX LOAD CENTER
2	0D4800	1	COVER, 8 CIRCUIT LOAD CENTER
	0F5211	1	COVER, 10 CIRCUIT LOAD CENTER
	0D3092	1	COVER, 12 CIRCUIT LOAD CENTER
	0F8312	1	COVER, 16 CIRCUIT LOAD CENTER
3	0C2237	1	TRANSFER SWITCH HOME STANDBY 100A 2P 250V
3A	077220	1	COIL UTILITY
3B	077220A	1	COIL STANDBY
3C	082574	1	INSULATOR-SIDEWALL (NOT SHOWN)
3D	084464	1	LIMIT SWITCH OPERATION (NOT SHOWN)
4	074908	6	SCREW HHTT M5-0.8 X 10
5	024912	1	SCREW HHTT 1/4-20 X 5/8
6	0A1658	1	LOCK WASHER, SPECIAL-1/4"
7	063617	1	RELAY PANEL 12VDC DPDT 10A@240VAC
8	0E7889A	1	8 CIRCUIT LOAD CENTER
	0E7889	1	12 CIRCUIT LOAD CENTER (ALSO USED FOR 10 CIRCUIT)
	0F9213	1	16 CIRCUIT LOAD CENTER
9	0A1495	4	SCREW HHTT M4-0.7 X 10
10	0A1661	2	RIVET POP .156" X .675"
11	022473	1	WASHER FLAT 1/4-M6 ZINC
12	081108	1	PLUG PLASTIC
13	0D4684	1	HARNESS ADAPTER PLATE
	0D4684A	1	8 CIRCUIT HARNESS ADAPTER PLATE
14	0F8279	1	SUBPLATE, LOAD CENTER
15	0F4790	10.5"	U-CHANNEL
16	022152	6	WASHER LOCK #10
17	064526	2	SCREW HWHS #6-25 X 3/8"
18	0E6155	1	ARM EXTENDER PIN
19	063378	4	HOLDER CABLE TIE
20	0G0979	1	HARNESS, 8 CIRCUIT LOAD CENTER TO MAIN PANEL
	0G0980	1	HARNESS, 10 CIRCUIT LOAD CENTER TO MAIN PANEL
	0G0981	1	HARNESS, 12 CIRCUIT LOAD CENTER TO MAIN PANEL
	0G0982	1	HARNESS, 16 CIRCUIT LOAD CENTER TO MAIN PANEL
21	074138	2	LUG QUICK DISCONNECT NI-S 10X45 DEG BRASS / TIN
22	036933	6	SCREW PPHM #10-32 X 3/8"
23	077033	6	LUG SLDLSS 1/0-#14X9/16 AL/CU
24	048850	1	BLOCK TERMINAL 20A 5 X 6 X 1100V
25	028739	4	TIE WRAP 3.9" X .10"
26	0A2110	4	SCREW SWAGE 1/4-20 X 1/2" ZINC
27	0D3191	1	COVER, RELAY & TERMINAL BLOCK
28	0D3088	1	WIRE HARNESS, LOAD CENTER (NOT SHOWN)
29	073591	2	FUSE HOLDER
30	073590A	2	FUSE 5A
31	040213B	4	SUPPORT SNAP-IN 1-3/8"
			<u>8 10 12 16 CIRCUIT</u>
32	0E7888	A/R	CIRCUIT BREAKER 20A 2P 1 1
33	0E7888A	A/R	CIRCUIT BREAKER 30A 2P 1 1 1
34	0E7888B	A/R	CIRCUIT BREAKER 15A 1P 5 3 5 5
35	0E7888C	A/R	CIRCUIT BREAKER 20A 1P 1 3 3 5
36	0E7888D	A/R	CIRCUIT BREAKER 40A 2P 1 1
37	0E7888E	A/R	CIRCUIT BREAKER 50A 2P 1
38	0D3320	1	COVER - HARNESS ENTRY
39	0F5439	1	HARNESS, 8 CIRCUIT LOAD CENTER TO EXT CONN BOX
	0F9327	1	HARNESS, 10 CIRCUIT LOAD CENTER TO EXT CONN BOX
	0F6720	1	HARNESS, 12 CIRCUIT LOAD CENTER TO EXT CONN BOX
	0F6720	1	HARNESS, 16 CIRCUIT LOAD CENTER TO EXT CONN BOX
40	074908	2	SCREW HHTT M5-0.8 X 10 (8 CIRCUIT)
	066849	2	SCREW HHTT M5-0.8 X 16 (10, 12, 16 CIRCUIT)
41	0A7215	4	SCREW SW 1/4"-20 X 5/8" WITH WASHER
42	0E6193	1	BRACKET, ARM EXTENDER